

STATE OF ILLINOIS
DEPARTMENT OF TRANSPORTATION

F.A.P. RTE.	SECTION	COUNTY	TOTAL SHEETS	SHEET NO.
332	3CR-1	WHITE	25	1
		ILLINOIS	CONTRACT NO. 78834	

PROPOSED HIGHWAY PLANS

FAP ROUTE 332 (IL 1)
SECTION 3CR-1
PROJECT NO. NHPP-SUHM(719)
THREE SIDED STRUCTURE REMOVAL &
CULVERT INSTALLATION OVER UNNAMED CREEK
WHITE COUNTY

INDEX OF SHEETS

SHEET NO.	DESCRIPTION
1	COVER SHEET
2	GENERAL NOTES & LIST OF HIGHWAY STANDARDS
3 - 6	SUMMARY OF QUANTITIES
7	TYPICAL SECTIONS
8	SCHEDULE OF QUANTITIES
9	ALIGNMENT
10	ROW
11	PLAN AND PROFILE
12	DETOUR MAP
13	LANDSCAPING PLAN
14	PAVEMENT MARKING PLAN
15	DETAILS
16 - 22	S.N. 097-7096
23 - 25	CROSS SECTIONS

D-99-010-21



DESIGN DESIGNATION: N/A

IL 1 (OTHER PRINCIPAL ARTERIAL)
CLASS II TRUCK ROUTE
SPEED LIMIT: 30 MPH
ADT = 5,400 (2021)
P.V. = 5,021 (92.98%)
S.U. = 158 (2.93%)
M.U. = 2021 (4.09%)
NAD 1983 STATE PLANE ILLINOIS EAST



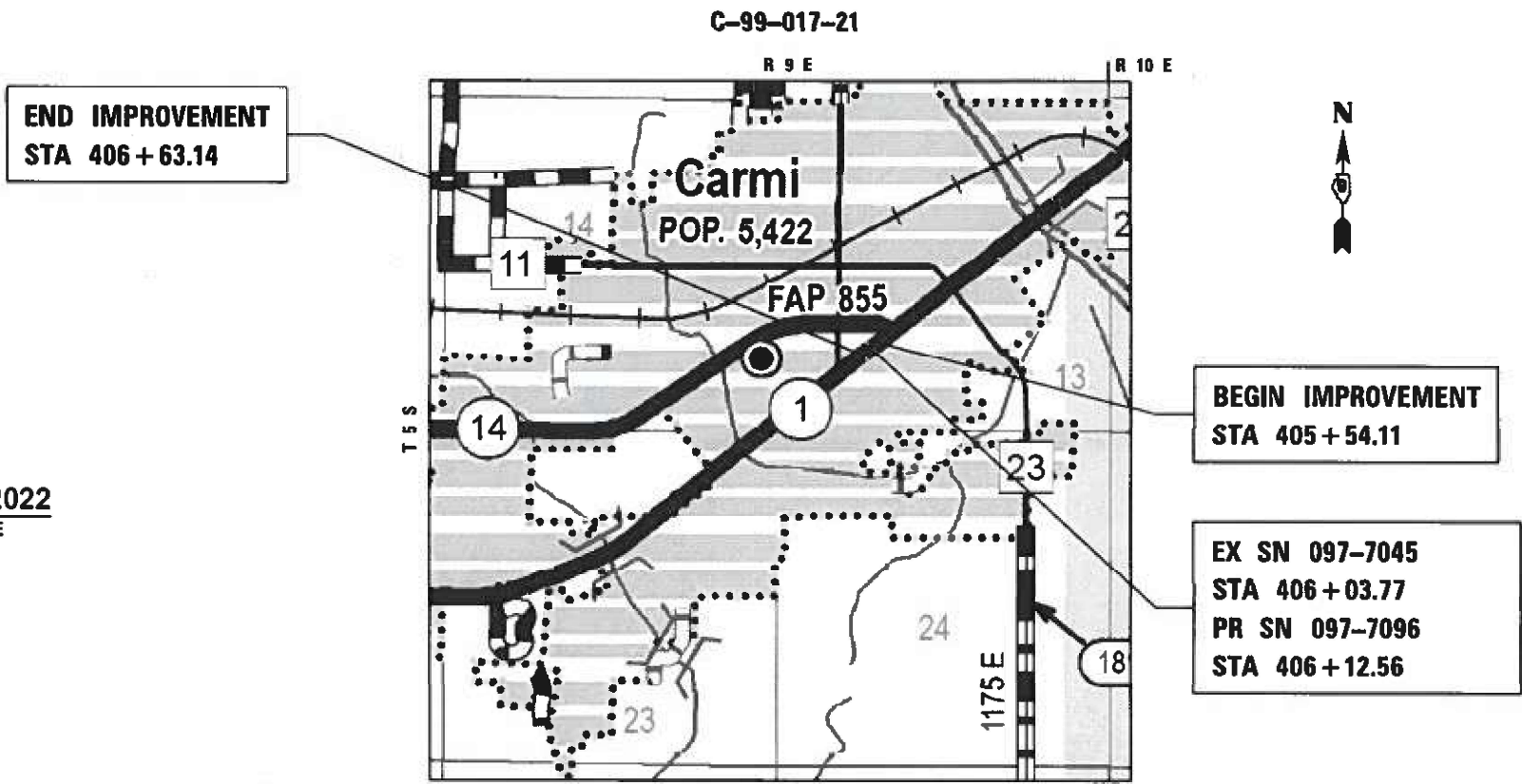
Sean D. Maxwell
SEAN D. MAXWELL ILLINOIS P.E. 062.071986 DATE 5/16/2022
EXPIRES 11/30/2023

QEI
QUIGG ENGINEERING INC
2351 SOUTH DIRKSEN PARKWAY
SPRINGFIELD, ILLINOIS 62703
PROJECT MANAGER: MICHAEL CIMA
www.quiggengineering.com

J.U.L.I.E.
JOINT UTILITY LOCATION INFORMATION FOR EXCAVATORS
1-800-892-0123
OR 811

PROJECT ENGINEER GRANT DETERDING (618) 351-5226

CONTRACT NO. 78834



LOCATION MAP

TOWNSHIP: CARMI
SECTION: 13

PROJECT LENGTH

GROSS LENGTH = 109.03 FT. = 0.021 MILE
NET LENGTH = 109.03 FT. = 0.021 MILE

STATE OF ILLINOIS
DEPARTMENT OF TRANSPORTATION

SUBMITTED June 29 20 22
Kirk H. Bram
REGIONAL ENGINEER

August 19, 2022
[Signature]
ENGINEER OF DESIGN AND ENVIRONMENT

August 19, 2022
[Signature]
DIRECTOR OF HIGHWAYS PROJECT IMPLEMENTATION

**PRINTED BY THE AUTHORITY
OF THE STATE OF ILLINOIS**

GENERAL NOTES

1. AT ALL LOCATIONS WHERE THE PROPOSED HOT MIX ASPHALT OR CONCRETE PAVEMENT JOINS AN EXISTING HOT MIX ASPHALT OR CONCRETE PAVEMENT, A FULL DEPTH SAWED JOINT SHALL BE CONSTRUCTED. THE COST OF THIS JOINT WILL BE INCLUDED IN THE COST OF THE TYPE OF PAVEMENT BEING CONSTRUCTED.
2. DELETED
3. ALL STORM SEWER STRUCTURE STATIONS AND OFFSETS ARE PROVIDED AT THE EDGE OF PAVEMENT. IT IS THE CONTRACTORS RESPONSIBILITY TO INSTALL THE STRUCTURE IN THE CORRECT LOCATION WITHIN THE COMBINATION CURB AND GUTTER.
5. THE FURNISHING AND INSTALLATION OF THE 1 1/4 IN. CONDUIT WITH ITS TRENCHING AND BACKFILL FROM THE LOOP SAWCUT TO THE SPLICE POINT SHALL BE INCLUDED IN THE LOOP INSTALLATION UNLESS SHOWN OTHERWISE ON THE PLANS.
6. THE CONTRACTOR SHALL NOTIFY THE ENGINEER OF TRAFFIC OPERATIONS 72 HOURS PRIOR TO THE SHUT-DOWN OR CUTTING OF EXISTING DETECTOR LOOPS.

HIGHWAY STANDARDS

- | | |
|-------------|--|
| 000001-08 | STANDARD SYMBOLS, ABBREVIATIONS AND PATTERNS |
| 001001-02 | AREAS OF REINFORCEMENT BARS |
| 001006 | DECIMAL OF AN INCH AND OF A FOOT |
| 280001-07 | TEMPORARY EROSION CONTROL SYSTEMS |
| 420001-10 | PAVEMENT JOINTS |
| 420701-03 | PAVEMENT WELDED WIRE REINFORCEMENT |
| 602401-07 | PRECAST MANHOLE TYPE A 4' (1.22 m) DIAMETER |
| 604046-03 | FRAME AND GRATE TYPE 10 |
| 604051-04 | FRAME AND GRATE TYPE 11 |
| 606001-08 | CONCRETE CURB TYPE B AND COMBINATION CONCRETE CURB AND GUTTER |
| 701001-02 | OFF-RD OPERATIONS, 2L, 2W, MORE THAN 15' (4.5 m) AWAY |
| 701006-05 | OFF-RD OPERATIONS, 2L, 2W, 15' (4.5 m) TO 24" (600 mm) FROM PAVEMENT EDGE |
| 701501-06 | URBAN LANE CLOSURE, 2L, 2W, UNDIVIDED |
| 701801-06 | SIDEWALK, CORNER OR CROSSWALK CLOSURE |
| 701901-08 | TRAFFIC CONTROL DEVICES |
| 780001-05 | TYPICAL PAVEMENT MARKINGS |
| 886001-01 | DETECTOR LOOP INSTALLATIONS |
| B.L.R. 21-9 | TYPICAL APPLICATIONS OF TRAFFIC CONTROL DEVICES FOR CONSTRUCTION ON RURAL LOCAL HIGHWAYS |
| 420101-07 | 24' (7.2M) JOINTED PCC PAVEMENT |
| 886006-01 | TYPICAL LAYOUT FOR DETECTION LOOPS |

COMMITMENTS

1. THE CONTRACTOR SHALL CONTACT THE CITY SUPERVISOR BRAD ATTEBURY AT (618)382-5555 A MINIMUM OF 4 WEEKS PRIOR TO THE START OF CONSTRUCTION.
2. A MEETING WITH THE CITY OF CARM, IDOT, AND THE CONTRACTOR SHALL BE HELD A MINIMUM OF 72 HOURS PRIOR TO STARTING WORK. THE CONTRACTOR SHALL CONTACT THE CITY SUPERVISOR BRAD ATTEBURY AT (618)382-5555 TO SET UP THE MEETING.
3. AFTER THE EXISTING 3-SIDED STRUCTURE HAS BEEN REMOVED, THE CONTRACTOR SHALL CONTACT THE CITY SUPERVISOR BRAD ATTEBURY AT (618)382-5555 AND GIVE THE CITY OF CARM A MINIMUM OF 14 DAYS TO RELOCATE EXISTING UTILITIES TO INCLUDE THE SANITARY SEWER LOCATED BENEATH THE EXISTING STRUCTURE.
4. TREE CLEARING RESTRICTION: TREES THREE INCHES OR GREATER IN DIAMETER AT BREAST HEIGHT SHALL NOT BE CLEARED FROM APRIL 1 TO SEPTEMBER 30 OF ANY YEAR.
5. DETOUR WILL USE COMMERCE STREET.

PREPARED BY: Charles Stein
DISTRICT STUDIES AND PLANS ENGINEER

EXAMINED BY: Nancy Lee
DISTRICT LAND ACQUISITION ENGINEER

EXAMINED BY: Carrie Nelson
DISTRICT PROGRAM DEVELOPMENT ENGINEER

EXAMINED BY: R. G. Green
DISTRICT OPERATIONS ENGINEER

EXAMINED BY: Dan J. Jankovich
DISTRICT PROJECT IMPLEMENTATION ENGINEER

EXAMINED BY: Dan J. Jankovich
DISTRICT CONSTRUCTION ENGINEER

EXAMINED BY: R. G. Green
DISTRICT MATERIALS ENGINEER

REV. - MS

MODEL: Default; FILE NAME: S:\2022\12\15\033 - ITR 198-38 03 - OE - Various ITRW-3 - E-1 Civil in Current PRC\030000000 - Sheet\033\033.dwg; User: cernice.dgn



USER NAME = smaxwell	DESIGNED	REVISED
PLOT SCALE = 100,0000 / in.	DRAWN	REVISED
PLOT DATE = 5/16/2022	CHECKED	REVISED
	DATE	REVISED

STATE OF ILLINOIS
DEPARTMENT OF TRANSPORTATION

SCALE: N/A		SHEET 1 OF 1 SHEETS	STA. TO STA.
------------	--	---------------------	--------------

GENERAL NOTES & LIST OF HIGHWAY STANDARDS

F.A.P. RTE. 332	SECTION 3CR-1	COUNTY WHITE	TOTAL SHEETS 25	SHEET NO. 2
CONTRACT NO. 78834				
ILLINOIS FED. AID PROJECT				

CONSTRUCTION TYPE CODE

80% FED, 20% STATE

CODE NO.	ITEM	UNIT	TOTAL QUANTITY	ROADWAY
				0004
				RURAL
20100210	TREE REMOVAL (OVER 15 UNITS DIAMETER)	UNIT	17	17
20101100	TREE TRUNK PROTECTION	EACH	1	1
20200100	EARTH EXCAVATION	CU YD	65	65
20700220	POROUS GRANULAR EMBANKMENT	CU YD	285	285
25000100	SEEDING, CLASS 1	ACRE	0.05	0.05
25000400	NITROGEN FERTILIZER NUTRIENT	POUND	4	4
25000500	PHOSPHORUS FERTILIZER NUTRIENT	POUND	4	4
25000600	POTASSIUM FERTILIZER NUTRIENT	POUND	4	4
25000700	AGRICULTURAL GROUND LIMESTONE	TON	0.1	0.1
25100630	EROSION CONTROL BLANKET	SQ YD	211	211
28000250	TEMPORARY EROSION CONTROL SEEDING	POUND	9	9
28000500	INLET AND PIPE PROTECTION	EACH	3	3
31100100	SUBBASE GRANULAR MATERIAL, TYPE A	TON	314	314
42000060	WELDED WIRE REINFORCEMENT	SQ YD	509	509

REV. - MS

MODEL: D:\6\11
FILE NAME: S:\2021\11\033 - FTB 199-38 D9 - OEI - Various I:\HW03 - IL-1 Culv in Cami PH2\CADD\CADD Sheets\0778834_sht 500.dgn



USER NAME = smaxwell	DESIGNED - JB	REVISED -
PLOT SCALE = 0.1667' / in.	DRAWN - JB	REVISED -
PLOT DATE = 5/16/2022	CHECKED - FBN	REVISED -
	DATE - 03/15/2022	REVISED -

STATE OF ILLINOIS
DEPARTMENT OF TRANSPORTATION

SUMMARY OF QUANTITIES

SCALE: N/A SHEET 1 OF 4 SHEETS STA. TO STA.

F.A.P. RTE.	SECTION	COUNTY	TOTAL SHEETS	SHEET NO.
332	3CR-1	WHITE	25	3
CONTRACT NO. 78834				
ILLINOIS FED. AID PROJECT				

CONSTRUCTION TYPE CODE

80% FED, 20% STATE

CODE NO.	ITEM	UNIT	TOTAL QUANTITY	ROADWAY
				0004
				RURAL
42000500	PORTLAND CEMENT CONCRETE PAVEMENT 10"	SQ YD	509	509
42300400	PORTLAND CEMENT CONCRETE DRIVEWAY PAVEMENT, 8 INCH	SQ YD	135	135
42400200	PORTLAND CEMENT CONCRETE SIDEWALK 5 INCH	SQ FT	1,098.5	1,098.5
44000100	PAVEMENT REMOVAL	SQ YD	509	509
44000200	DRIVEWAY PAVEMENT REMOVAL	SQ YD	92	92
44000500	COMBINATION CURB AND GUTTER REMOVAL	FOOT	198	198
44000600	SIDEWALK REMOVAL	SQ FT	1,113	1,113
50100100	REMOVAL OF EXISTING STRUCTURES	EACH	1	1
50200100	STRUCTURE EXCAVATION	CU YD	272	272
50800205	REINFORCEMENT BARS, EPOXY COATED	POUND	2,700	2,700
52200020	TEMPORARY SOIL RETENTION SYSTEM	SQ FT	787	787
54002020	EXPANSION BOLTS 3/4 INCH	EACH	58	58
54003000	CONCRETE BOX CULVERTS	CU YD	12.3	12.3
54010905	PRECAST CONCRETE BOX CULVERTS 9' X 5'	FOOT	83.5	83.5

MODEL: D:\p1\11033 - PTB 199-38 D9 - OEI - Various I:\HW03 - 11-1 Culv in Cermi PH2\CADD\CADD Sheets\0778834_sht_SCO.dgn
 FILE NAME: S:\2021\11033 - PTB 199-38 D9 - OEI - Various I:\HW03 - 11-1 Culv in Cermi PH2\CADD\CADD Sheets\0778834_sht_SCO.dgn

REV. - MS



USER NAME = smaxwell	DESIGNED - JB	REVISED -
PLOT SCALE = 0.1667' / in.	DRAWN - JB	REVISED -
PLOT DATE = 5/16/2022	CHECKED - FBN	REVISED -
	DATE - 03/15/2022	REVISED -

**STATE OF ILLINOIS
DEPARTMENT OF TRANSPORTATION**

SUMMARY OF QUANTITIES

SCALE: N/A SHEET 2 OF 4 SHEETS STA. TO STA.

F.A.P. RTE.	SECTION	COUNTY	TOTAL SHEETS	SHEET NO.
332	3CR-1	WHITE	25	4
CONTRACT NO. 78834				
ILLINOIS FED. AID PROJECT				

CONSTRUCTION TYPE CODE

80% FED, 20% STATE

ROADWAY

0004

RURAL

CODE NO.	ITEM	UNIT	TOTAL QUANTITY	
54248510	CONCRETE COLLAR	CU YD	1.0	1.0
55100900	STORM SEWER REMOVAL 18"	FOOT	44	44
55101100	STORM SEWER REMOVAL 21"	FOOT	33	33
56300300	ADJUSTING WATER SERVICE LINES	FOOT	51	51
59100100	GEOCOMPOSITE WALL DRAIN	SQ YD	131	131
60219200	MANHOLES, TYPE A, 4'-DIAMETER, TYPE 10 FRAME AND GRATE	EACH	1	1
60261300	INLETS TO BE ADJUSTED WITH NEW TYPE 11 FRAME AND GRATE	EACH	2	2
60265700	VALVE VAULTS TO BE ADJUSTED	EACH	1	1
60600605	CONCRETE CURB, TYPE B	FOOT	36	36
60603800	COMBINATION CONCRETE CURB AND GUTTER, TYPE B-6.12	FOOT	219	219
67100100	MOBILIZATION	L SUM	1	1
70102620	TRAFFIC CONTROL AND PROTECTION, STANDARD 701501	L SUM	1	1
70102640	TRAFFIC CONTROL AND PROTECTION, STANDARD 701801	L SUM	1	1
* 78009004	MODIFIED URETHANE PAVEMENT MARKING - LINE 4"	FOOT	437	437

* SPECIALTY ITEM

REV. - MS

MODEL: D:\64\11
 FILE NAME: S:\2021\11\033 - FTB 199-38 D9 - OEI - Various I:\HW03 - IL-1 Curb in Cami PH2\CADD\CADD Sheets\0778834_sht 500.dgn



USER NAME = smaxwell	DESIGNED - JB	REVISED -
PLOT SCALE = 0.1667' / in.	DRAWN - JB	REVISED -
PLOT DATE = 5/16/2022	CHECKED - FBN	REVISED -
	DATE - 03/15/2022	REVISED -

STATE OF ILLINOIS
DEPARTMENT OF TRANSPORTATION

SUMMARY OF QUANTITIES

SCALE: N/A SHEET 3 OF 4 SHEETS STA. TO STA.

F.A.P. RTE.	SECTION	COUNTY	TOTAL SHEETS	SHEET NO.
332	3CR-1	WHITE	25	5
CONTRACT NO. 78834				
ILLINOIS FED. AID PROJECT				

CONSTRUCTION TYPE CODE

80% FED, 20% STATE

ROADWAY

0004

RURAL

CODE NO.	ITEM	UNIT	TOTAL QUANTITY	
* 78009012	MODIFIED URETHANE PAVEMENT MARKING - LINE 12"	FOOT	95	95
* 85000200	MAINTENANCE OF EXISTING TRAFFIC SIGNAL INSTALLATION	EACH	1	1
* 88600700	PREFORMED DETECTOR LOOP	FOOT	28	28
* X0327235	LOCATING UNDERGROUND UTILITIES	FOOT	100	100
X0900064	MEMBRANE WATERPROOFING SYSTEM FOR BURIED STRUCTURES	SQ YD	131	131
X7011800	TRAFFIC CONTROL AND PROTECTION, STANDARD BLR 21	L SUM	1	1
Z0016702	DETOUR SIGNING	L SUM	1	1
Z0056612	STORM SEWER (WATER MAIN REQUIREMENTS) 18 INCH	FOOT	35	35
Z0056614	STORM SEWER (WATER MAIN REQUIREMENTS) 21 INCH	FOOT	41	41

* SPECIALTY ITEM

MODEL: D:\6\1\11\033 - FTB 199-38 D9 - OEI - Various I:\HW0-3 - IL-1 Culk in Cami PH2\CADD\CADD Sheets\0778834_sht 500.dgn
 FILE NAME: 5/16/2022 11:03:33 - FTB 199-38 D9 - OEI - Various I:\HW0-3 - IL-1 Culk in Cami PH2\CADD\CADD Sheets\0778834_sht 500.dgn

REV. - MS



USER NAME = smaxwell	DESIGNED - JB	REVISED -
PLOT SCALE = 0.1667' / in.	DRAWN - JB	REVISED -
PLOT DATE = 5/16/2022	CHECKED - FBN	REVISED -
	DATE - 03/15/2022	REVISED -

**STATE OF ILLINOIS
DEPARTMENT OF TRANSPORTATION**

SUMMARY OF QUANTITIES

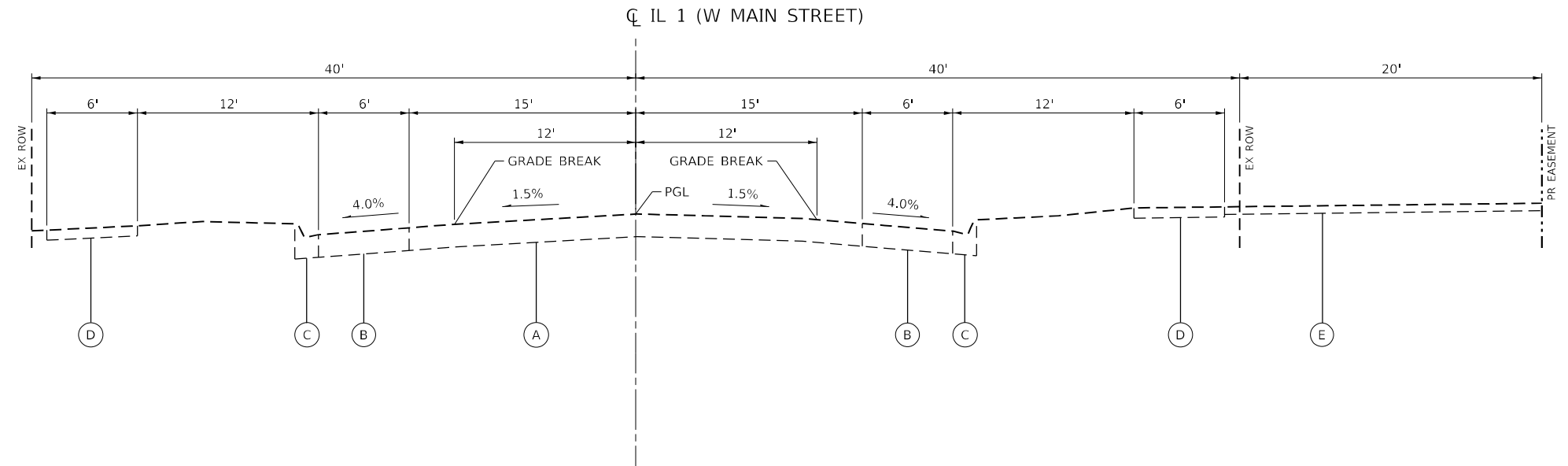
SCALE: N/A SHEET 4 OF 4 SHEETS STA. TO STA.

F.A.P. RTE.	SECTION	COUNTY	TOTAL SHEETS	SHEET NO.
332	3CR-1	WHITE	25	6
CONTRACT NO. 78834			ILLINOIS FED. AID PROJECT	

LEGEND

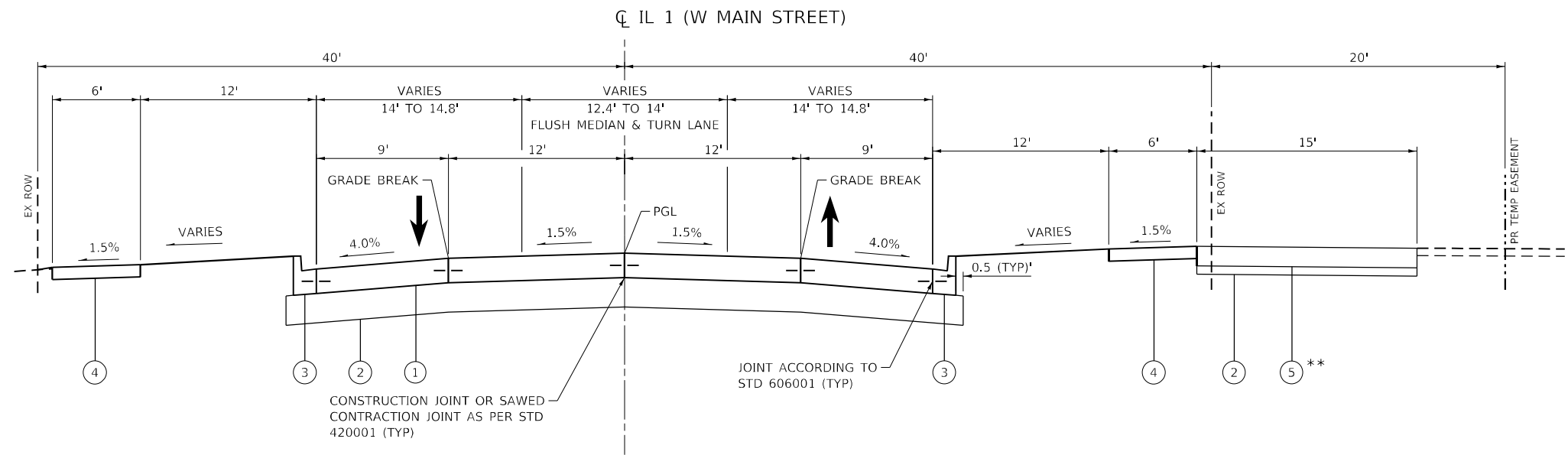
- (A) PAVEMENT 9"
- (B) PCC BASE COURSE WIDENING 9"
- (C) COMB CC&G TB6.12
- (D) PCC SIDEWALK
- (E) HMA PARKING LOT
- (1) PCC PVT 10"
- (2) SUB GRAN MAT A (12" & VARIES)*
- (3) COMB CC&G TB6.12
- (4) PC CONC SIDEWALK 5"
- (5) PCC DRIVEWAY PAVT 8"

* VARIABLE DEPTH WITHIN THE LIMITS OF STRUCTURE EXCAVATION.



EXISTING TYPICAL SECTION - IL 1 (W MAIN ST)

STA 405+54.11 TO STA 406+63.14



PROPOSED TYPICAL SECTION - IL 1 (W MAIN ST)

STA 405+54.11 TO STA 406+63.14

** STA 405+99.66 TO 406+39.07

MODEL Path: \\... FILE NAME: S:\2021\11\033 - PTB 199-38 D9 - QEI - Varibus HW03 - IL-1_C&G.in Comp: P:\CADD\CADD Sheets\078834_sht_Typical.dgn



USER NAME = smaxwell	DESIGNED - JB	REVISED -
PLOT SCALE = 10,0000 * / in.	DRAWN - JB	REVISED -
PLOT DATE = 5/16/2022	CHECKED - FBN	REVISED -
	DATE - 03/15/2022	REVISED -

**STATE OF ILLINOIS
DEPARTMENT OF TRANSPORTATION**

TYPICAL SECTIONS

SCALE: N/A SHEET 1 OF 1 SHEETS STA. TO STA.

F.A.P. RTE. 332	SECTION 3CR-1	COUNTY WHITE	TOTAL SHEETS 25	SHEET NO. 7
CONTRACT NO. 78834				
ILLINOIS FED. AID PROJECT				

EARTHWORK SCHEDULE				
20200100				
LOCATION	EARTH EX (CU YD)	EARTH EX ADJUSTED FOR SHRINKAGE (CU YD)*	EMBANKMENT (CU YD)	EARTHWORK BALANCE (CU YD) WASTE (+) OR SHORTAGE (-)
405+54.11 TO 405+75.00	37.2	29.8	0.7	+29.1
STRUCTURE EXCAVATION OMISSION				
406+50.00 TO 406+63.14	24.1	19.3	0.3	+19.0
TOTAL	65.0			

*ASSUME 20% SHRINKAGE FACTOR

LANDSCAPING AND EROSION CONTROL SCHEDULE																					
20101100																					
LOCATION			25000100		25000400		25000500		25000600		25000700		25100630		28000250		28000500				
			TREE TRUNK PROTECTION	SEEDING, CLASS 1	NITROGEN FERTILIZER NUTRIENT	PHOSPHORUS FERTILIZER NUTRIENT	POTASSIUM FERTILIZER NUTRIENT	AGRICULTURAL GROUND LIMESTONE	EROSION CONTROL BLANKET	TEMPORARY EROSION CONTROL SEEDING	INLET AND PIPE PROTECTION										
			EACH	ACRE	POUND (90 LBS/ACRE)	POUND (90 LBS/ACRE)	POUND (90 LBS/ACRE)	TON (2 TONS/ACRE)	SQ YD	POUND (100 LBS/ACRE) (2 APPLICATIONS)	EACH										
STA	OFFSET	WIDTH	STA	OFFSET	WIDTH	AREA (SQ FT)															
405+54.11	LT	10.42	TO 406+63.14	LT	10.42	1136.09	-	0.026	2.34	2.34	2.34	0.05	126	5.2	-						
405+54.11	RT	10.42	TO 405+91.01	RT	10.42	384.50	-	0.009	0.81	0.81	0.81	0.02	43	1.8	-						
405+91.01	RT	10.42	TO 406+00.22	RT	0.00	79.80	-	0.002	0.18	0.18	0.18	0.01	9	0.4	-						
406+36.22	RT	0.00	TO 406+45.42	RT	10.42	79.80	-	0.002	0.18	0.18	0.18	0.01	9	0.4	-						
406+45.42	RT	10.42	TO 406+66.14	RT	10.42	215.90	-	0.005	0.45	0.45	0.45	0.01	24	1	-						
406+02.84	LT						-	-	-	-	-	-	-	-	-						
406+08.63	RT						-	-	-	-	-	-	-	-	-						
406+48.80	RT						-	-	-	-	-	-	-	-	-						
406+59.40	LT						1	-	-	-	-	-	-	-	-						
TOTAL													1	0.05	4.00	4.00	4.00	0.10	211	9.0	3

REMOVAL SCHEDULE										
20100210										
LOCATION		44000100		44000200		44000500		44000600		
		TREE REMOVAL (OVER 15 UNITS DIAMETER)	PAVEMENT REMOVAL	DRIVEWAY PAVEMENT REMOVAL	COMBINATION CURB AND GUTTER REMOVAL	SIDEWALK REMOVAL				
		UNIT	SQ YD	SQ YD	FOOT	SQ FT				
STA	OFFSET	STA	OFFSET							
405+54.11	LT	TO 406+63.14	LT	-	254.40	-	109.03	654.18		
405+54.11	RT	TO 406+01.32	RT	-	110.16	-	47.21	283.26		
406+01.32	RT	TO 406+03.81	RT	-	5.81	-	11.11	14.64		
406+03.81	RT	TO 406+36.98	RT	-	77.40	-	14.04	-		
406+36.98	RT	TO 406+47.21	RT	-	23.87	-	-	64.68		
406+47.21	RT	TO 406+63.14	RT	-	37.17	-	15.93	95.58		
* 406+18.22	RT			-	-	91.40	-	-		
406+27.40	LT			17.0	-	-	-	-		
TOTAL				17.0	509.0	92.0	198.0	1113.0		

* Note: Station limits may change if location of commercial entrance is moved to avoid utility pole.

STORM SEWER AND WATER MAIN SCHEDULE																					
54248510																					
LOCATION			55100900		55101100		56300300		60219200		60261300		60265700		Z0056612		Z0056614				
			CONCRETE COLLAR	STORM SEWER REMOVAL 18"	STORM SEWER REMOVAL 21"	ADJUSTING WATER SERVICE LINES	MANHOLES, TYPE A, 4'-DIAMETER, TYPE 10 FRAME AND GRATE	INLETS TO BE ADJUSTED WITH NEW TYPE 11 FRAME AND GRATE	VALVE VAULTS TO BE ADJUSTED	STORM SEWER (WATER MAIN REQUIREMENTS) 18 INCH	STORM SEWER (WATER MAIN REQUIREMENTS) 21 INCH										
			CU YD	FOOT	FOOT	FOOT	EACH	EACH	EACH	FOOT	FOOT										
STA	OFFSET	STA	OFFSET																		
406+20.81	RT	TO 406+64.08	RT	-	43.27	-	-	-	-	-	-	-	-	-	-	-	-	-			
405+76.47	RT	TO 406+08.90	RT	-	-	32.43	-	-	-	-	-	-	-	-	-	-	-	-			
406+29.08	RT	TO 406+64.08	RT	-	-	-	-	-	-	-	-	-	-	-	35.00	-	-	-			
405+76.47	RT	TO 406+08.61	RT	-	-	-	-	-	-	-	-	-	-	-	-	-	-	32.40			
406+08.61	RT	TO 406+15.65	RT	-	-	-	-	-	-	-	-	-	-	-	-	-	-	7.70			
406+19.41	LT	TO 406+19.41	RT	-	-	-	51.00	-	-	-	-	-	-	-	-	-	-	-			
405+76.47	RT			0.50	-	-	-	-	-	-	-	-	-	-	-	-	-	-			
405+98.97	RT			-	-	-	-	-	-	-	-	-	-	-	-	-	-	-			
406+02.87	LT			-	-	-	-	-	-	-	-	-	-	-	-	-	-	-			
406+08.61	RT			-	-	-	-	-	-	-	-	-	-	-	-	-	-	-			
406+64.08	RT			0.50	-	-	-	-	-	-	-	-	-	-	-	-	-	-			
406+48.62	RT			-	-	-	-	-	-	-	-	-	-	-	-	-	-	-			
TOTAL													1.0	44.0	33.0	51.0	1.0	2.0	1.0	35.0	41.0

PAVING SCHEDULE											
20100100											
LOCATION		31100100		42000060		42000500		42300400		42400200	
		SUBBASE GRANULAR MATERIAL, TYPE A	WELDED WIRE REINFORCEMENT	PORTLAND CEMENT CONCRETE PAVEMENT 10"	PORTLAND CEMENT CONCRETE DRIVEWAY PAVEMENT, 8 INCH	PORTLAND CEMENT CONCRETE SIDEWALK 5 INCH					
		TON	SQ YD	SQ YD	SQ YD	SQ FT					
STA	OFFSET	STA	OFFSET	REMARKS							
405+54.11	LT	TO 406+63.14	LT		-	254.40	254.40	-	-	654.18	
405+54.11	RT	TO 406+00.72	RT		-	108.76	108.76	-	-	279.66	
406+00.72	RT	TO 406+35.72	RT		-	81.67	81.67	-	-	-	
406+35.72	RT	TO 406+63.14	RT		-	63.98	63.98	-	-	164.52	
405+54.11	LT/RT	TO 406+63.14	LT/RT		313.20	-	-	-	-	-	
* 405+99.66	RT	TO 406+39.07	RT	PARKING LOT DRIVEWAY	-	-	-	65.68	-	-	
* 406+18.22	RT				-	-	-	68.52	-	-	
TOTAL					314.00	509.00	509.00	135.00	-	1098.50	

* Note: Station limits may change if location of commercial entrance is moved to avoid utility pole.

CURB AND GUTTER SCHEDULE										
60600605										
LOCATION		60603800								
		CONCRETE CURB, TYPE B	COMBINATION CONCRETE CURB AND GUTTER, TYPE B-6.12							
		FOOT	FOOT							
STA	OFFSET	STA	OFFSET							
405+54.11	LT	TO 406+63.14	LT	-	109.03					
* 405+54.11	RT	TO 405+93.24	RT	17.99	39.13					
* 405+93.24	RT	TO 406+35.72	RT	17.99	42.48					
* 406+35.72	RT	TO 406+63.14	RT	-	27.42					
TOTAL				36.00	219.00					

* Note: Station limits may change if location of commercial entrance is moved to avoid utility pole.

PAVEMENT MARKING SCHEDULE										
78009004										
LOCATION		78009012								
		MODIFIED URETHANE PAVEMENT MARKING - LINE 4"	MODIFIED URETHANE PAVEMENT MARKING - LINE 12"							
		FOOT	FOOT							
STA	OFFSET	STA	OFFSET	TYPE						
405+54.11	LT	TO 406+41.64	LT	DOUBLE YELLOW	175.50					
406+41.64	LT	TO 406+63.14	LT	DOUBLE YELLOW	43.04					
405+54.11	RT	TO 406+41.64	RT	DOUBLE YELLOW	175.06					
406+41.64	RT	TO 406+63.14	RT	DOUBLE YELLOW	43.04					
405+54.11	LT/RT	TO 406+63.14	LT/RT	YELLOW MEDIAN DIAGONALS	-	94.24				
TOTAL					437.00	95.00				

DETECTOR LOOP SCHEDULE			
88600700			
LOCATION		PREFORMED DETECTOR LOOP	
		FOOT	
STA	OFFSET		
405+83.09	LT	28.0	
TOTAL		28.0	

MODEL: D:\p\11\033 - FTB_199-38_09 - OEI - Various - I:\11\033 - I1-1_Cur in Comm - PH2\CADD\CADD_Sheets\1997833_sht_Schedule.dgn
 FILE NAME: S:\2021\11\033 - FTB_199-38_09 - OEI - Various - I:\11\033 - I1-1_Cur in Comm - PH2\CADD\CADD_Sheets\1997833_sht_Schedule.dgn



USER NAME = smaxwell	DESIGNED - JB	REVISED -
PLOT SCALE = 40.0000' / in.	DRAWN - JB	REVISED -
PLOT DATE = 5/16/2022	CHECKED - FBN	REVISED -
	DATE - 03/15/2022	REVISED -

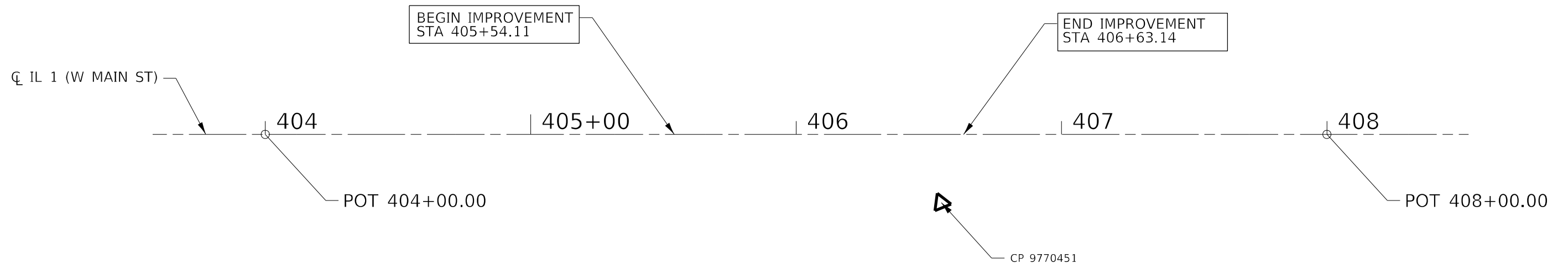
STATE OF ILLINOIS
DEPARTMENT OF TRANSPORTATION

SCHEDULE OF QUANTITIES

SCALE: N/A SHEET 1 OF 1 SHEETS STA. TO STA.

F.A.P. RTE.	SECTION	COUNTY	TOTAL SHEETS	SHEET NO.
332	3CR-1	WHITE	25	8
CONTRACT NO. 78834				
ILLINOIS FED. AID PROJECT				

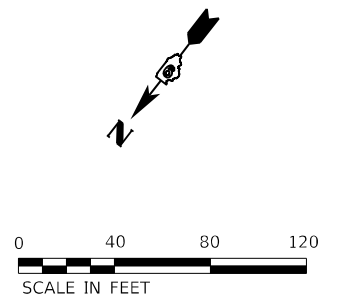
MODEL: D:\p4\h\...
 FILE NAME: S:\2022\12\11\033 - PTB 199-38 D9 - QEI - Various HWY0-3 - IL-1 C&G in Comm\PHD\CADD\CADD Sheets\0778834_sht_A1E.dgn



CENTERLINE CONTROL TABLE

DESCRIPTION	POINT	NORTHING	EASTING
POT STA 404+00.00	QEI 101	517254.0228	1032751.4549
POT STA 408+00.00	QEI 102	517008.8136	1032435.4289

BENCHMARK:
 BM AS 22. CHISELED SQUARE ON SE CORNER OF SIGNAL FDN AT SW QUAD OF
 IL 1 & IL 14; ELEV. 383.44

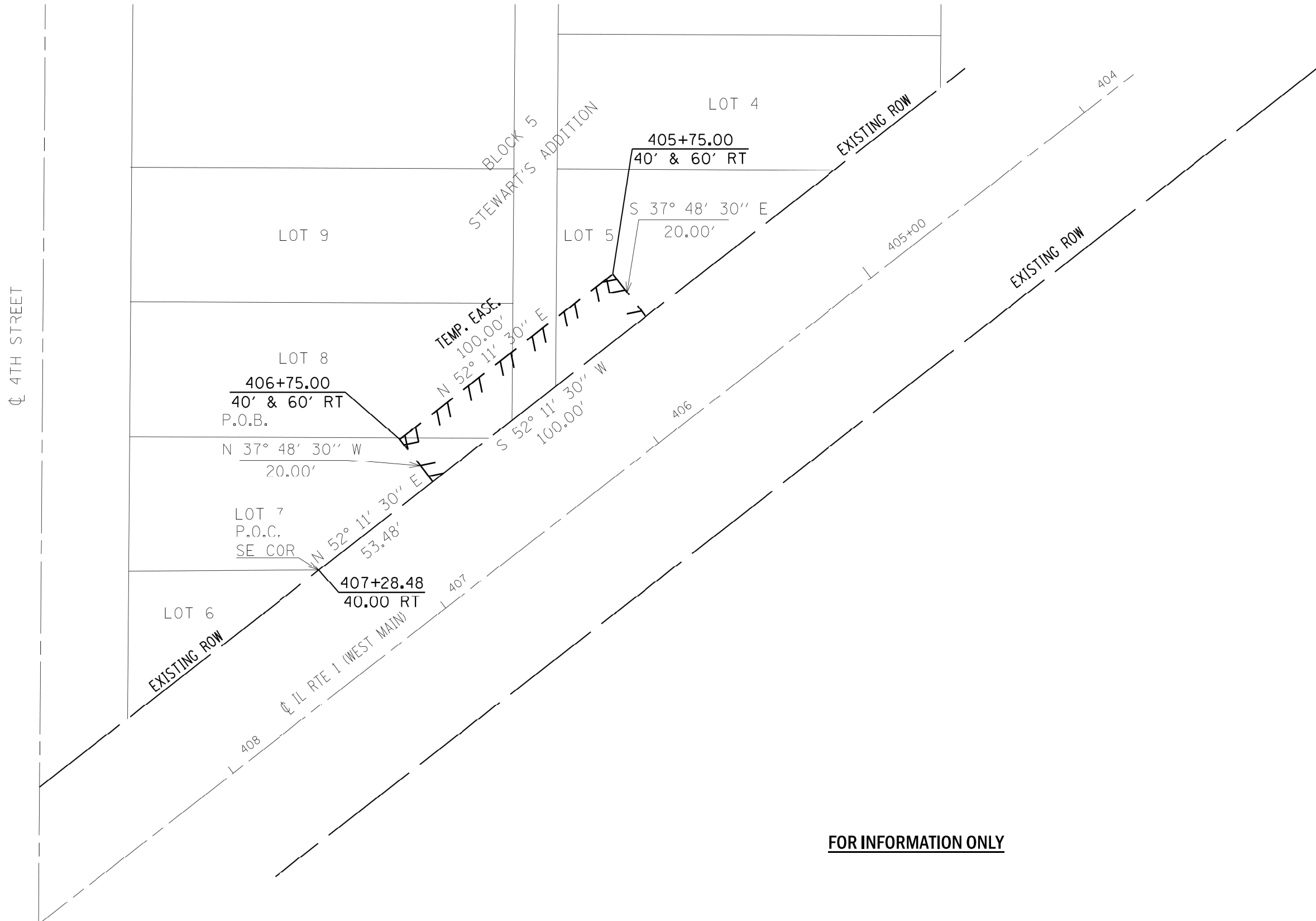


USER NAME = smaxwell	DESIGNED - JS	REVISED -
PLOT SCALE = 40,0002 */ in.	DRAWN - JS	REVISED -
PLOT DATE = 5/16/2022	CHECKED - FBN	REVISED -
	DATE - 03/15/2022	REVISED -

STATE OF ILLINOIS
DEPARTMENT OF TRANSPORTATION

ALIGNMENT IL 1 (W MAIN ST)		SCALE: N/A	SHEET 1 OF 1 SHEETS	STA. TO STA.

F.A.P. RTE. 332	SECTION 3CR-1	COUNTY WHITE	TOTAL SHEETS 25	SHEET NO. 9
CONTRACT NO. 78834				
ILLINOIS FED. AID PROJECT				



FOR INFORMATION ONLY

MODEL: P:\d46\h
 FILE NAME: S:\2022\12\11\033 - PTB 199-38 D9 - OF - Various LHMV3 - 11-1 Cdk in Comm PHD\CADD\CADD Stewart\078834_sht ROW.dwg

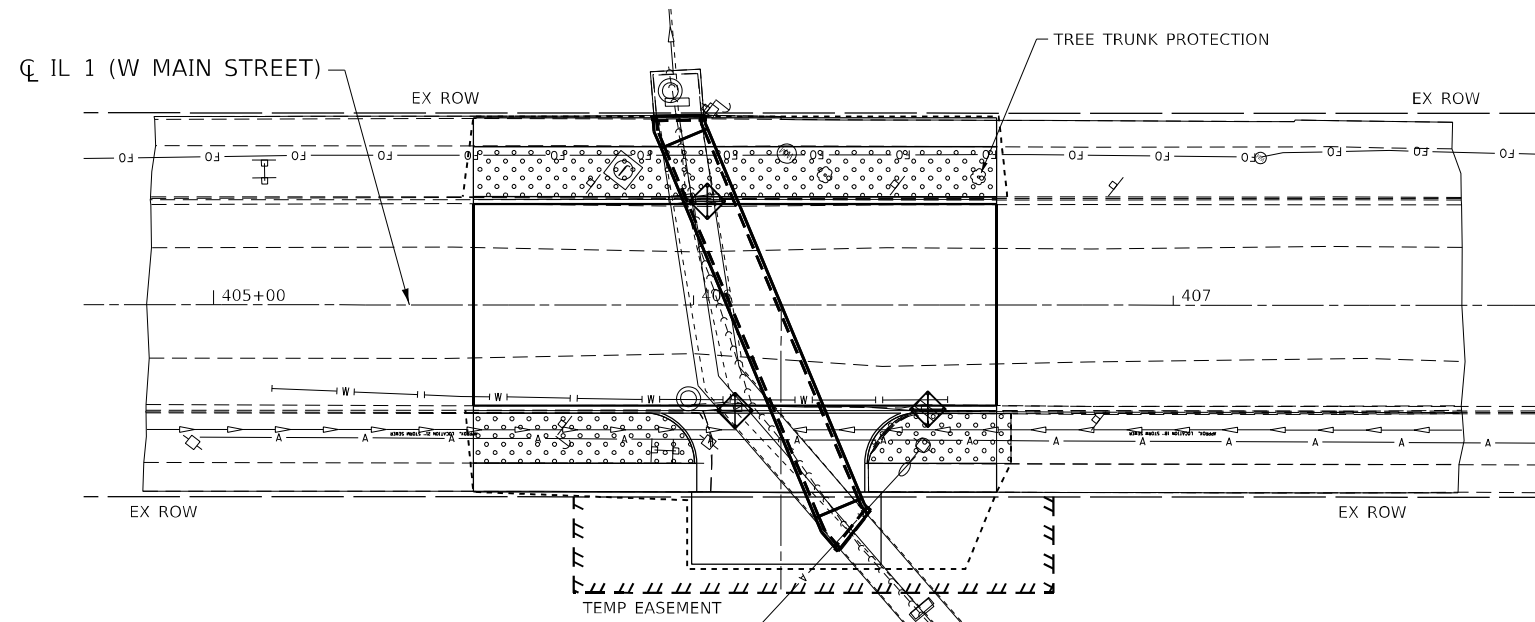
USER NAME = smaxwell	DESIGNED -	REVISED -
	DRAWN -	REVISED -
PLOT SCALE = 39.9999 */ in.	CHECKED -	REVISED -
PLOT DATE = 5/16/2022	DATE -	REVISED -

**STATE OF ILLINOIS
DEPARTMENT OF TRANSPORTATION**

SCALE: N/A		SHEET 1 OF 1 SHEETS		STA.	TO STA.
		ROW			

F.A.P. RTE. 332	SECTION 3CR-1	COUNTY WHITE	TOTAL SHEETS 25	SHEET NO. 10
CONTRACT NO. 78834				
ILLINOIS FED. AID PROJECT				

MODEL: D:\p4\h\...
 FILE NAME: S:\2022\11\033 - PTB 199-38 D9 - QEI - Various LHW03-3 - IL-1 Civil in Comm PHO CADD\CADD Sheets\110778834_sht_Landscap.dgn



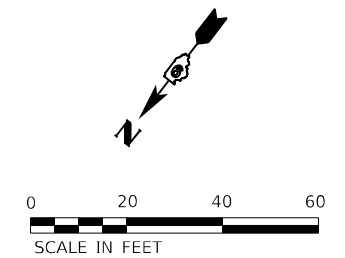
LEGEND



SEEDING, CLASS 1 WITH EROSION CONTROL BLANKET



INLET AND PIPE PROTECTION



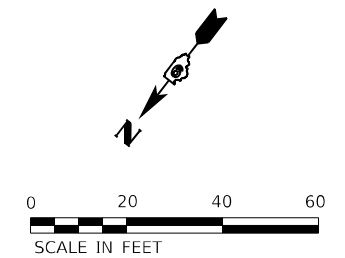
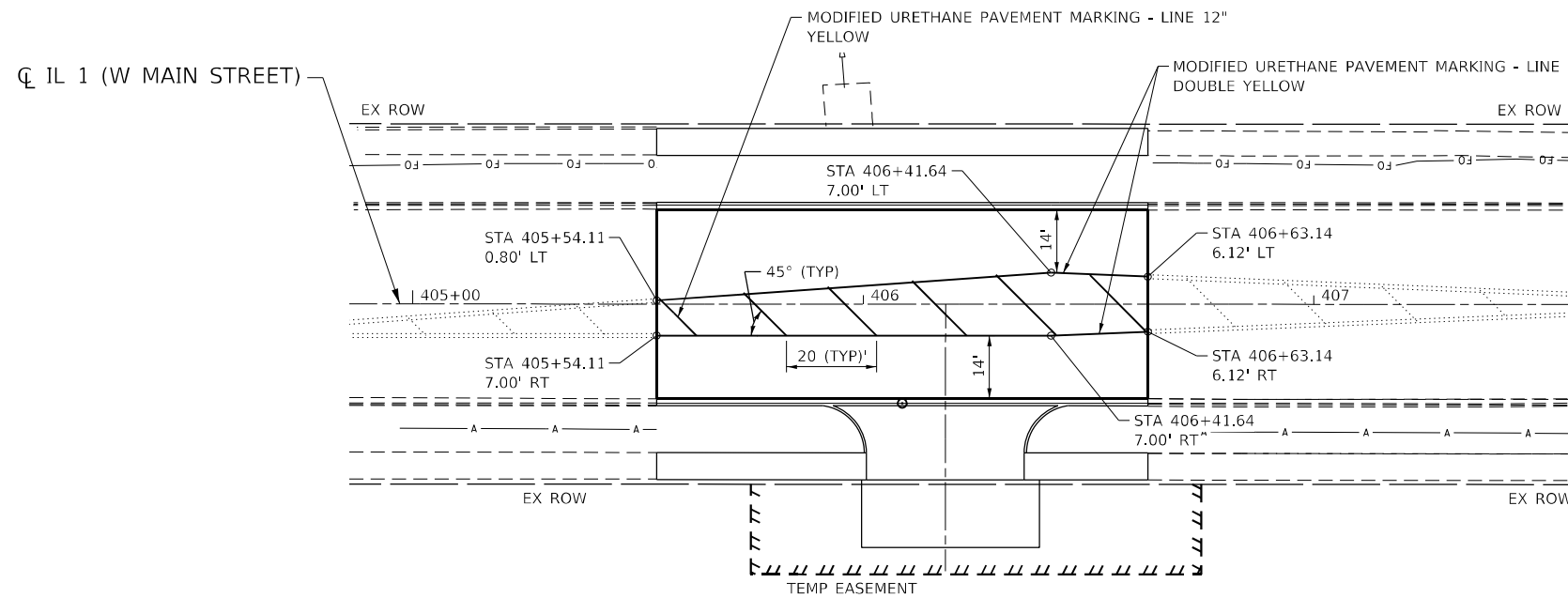
USER NAME = smaxwell	DESIGNED - JB	REVISED -
PLOT SCALE = 40,0000 * / in.	DRAWN - JB	REVISED -
PLOT DATE = 5/16/2022	CHECKED - FBN	REVISED -
	DATE - 03/15/2022	REVISED -

**STATE OF ILLINOIS
DEPARTMENT OF TRANSPORTATION**

**LANDSCAPING PLAN
IL 1 (W MAIN ST)**

SCALE: 1" = 20' SHEET 1 OF 1 SHEETS STA. 405+54.11 TO STA. 406+63.14

F.A.P. RTE. 332	SECTION 3CR-1	COUNTY WHITE	TOTAL SHEETS 25	SHEET NO. 13
CONTRACT NO. 78834				
ILLINOIS FED. AID PROJECT				



MODEL: D:\64bit\...
 FILE NAME: S:\2022\12\11\033 - PTB 199-38 D9 - QEI - Various ILHW-3 - IL-1 C&G in Comm PHD\CADD\CADD Sheets\0778834_sht_PMK.dgn



USER NAME = smaxwell	DESIGNED - JB	REVISED -
PLOT SCALE = 40,0000 * / in.	CHECKED - FBN	REVISED -
PLOT DATE = 5/16/2022	DATE - 03/15/2022	REVISED -

DRAWN - JB	REVISED -
CHECKED - FBN	REVISED -
DATE - 03/15/2022	REVISED -

STATE OF ILLINOIS
DEPARTMENT OF TRANSPORTATION

PAVEMENT MARKING PLAN
IL 1 (W MAIN ST)

SCALE: 1" = 20' SHEET 1 OF 1 SHEETS STA. 405+54.11 TO STA. 406+63.14

F.A.P. RTE.	SECTION	COUNTY	TOTAL SHEETS	SHEET NO.
332	3CR-1	WHITE	25	14
CONTRACT NO. 78834				
ILLINOIS FED. AID PROJECT				

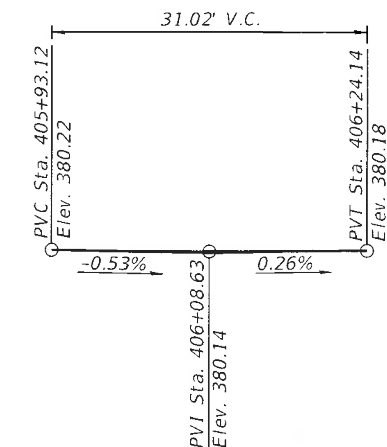
Benchmark: BM AS 22, Chiseled Square on SE Corner of Signal Fdn at SW quad of IL 1 and IL 14; Elev. 383.44

Existing Structure: No. 097-7045 is a 9'x6' concrete box culvert approximately 96' long carrying an unnamed creek under FAP 332. Year of construction is unknown.

No Salvage

INDEX OF SHEETS

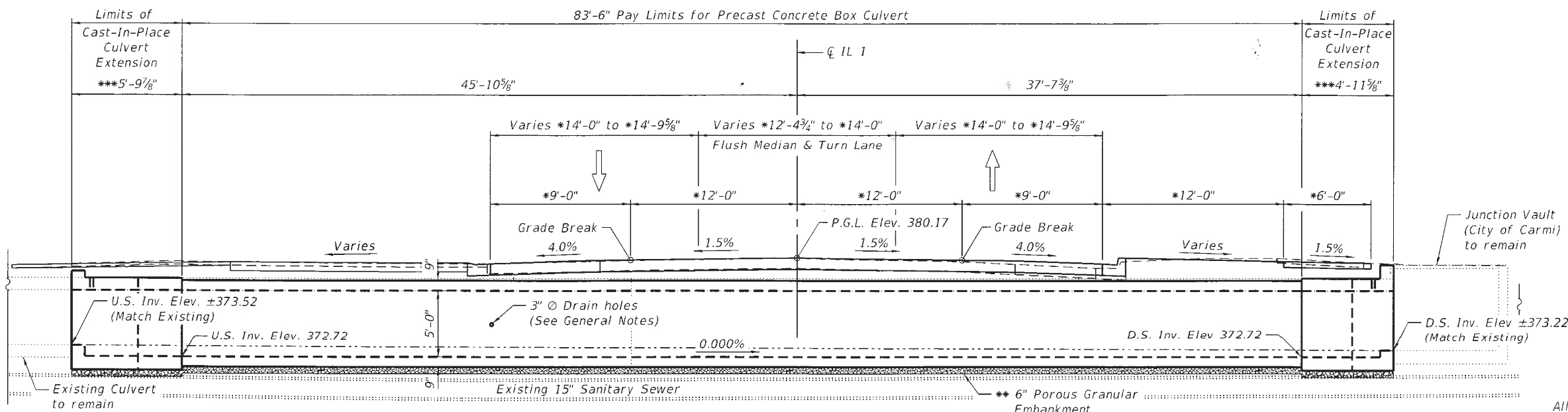
1. General Plan and Elevation
2. General Data
3. Limits - Removal of Existing Structures
4. Temporary Soil Retention System
5. Box Culvert Extension Details - 1
6. Box Culvert Extension Details - 2
7. Soil Boring Logs



DESIGN SPECIFICATIONS
2020 AASHTO LRFD Bridge Design Specifications, 9th Edition

DESIGN STRESSES
FIELD UNITS
f_c = 3,500 psi
f_y = 60,000 psi (Reinforcement)
PRECAST UNITS
f_c = 5,000 psi
f_y = 65,000 psi (Welded Wire Fabric)

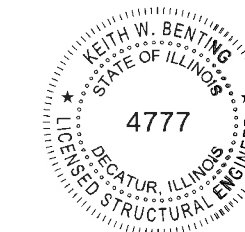
LOADING HL-93
Allow 50#/sq. ft. for future wearing surface.



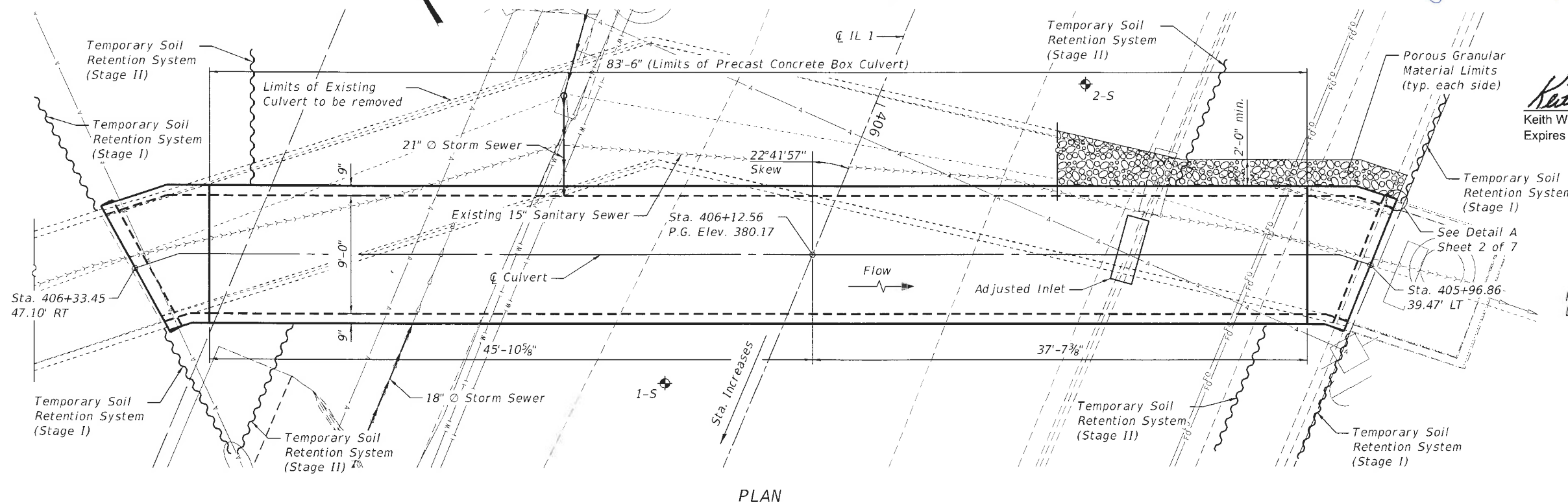
LONGITUDINAL SECTION
(Looking Northeast)

- * Dimensions at Rt. L's to CL Roadway
- ** Included in cost of Precast Concrete Box Culvert 9'x5'
- *** Measured along CL culvert

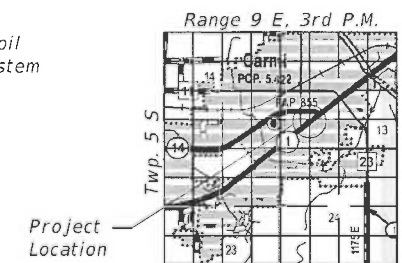
APPROVED
For Structural Adequacy Only
Keith W. Benting
Engineer of Bridges & Structures



Keith W. Benting 8/22/2022
Keith W. Benting, Illinois S.E. 081-004777 Date
Expires 11/30/2022



PLAN



LOCATION SKETCH

GENERAL PLAN & ELEVATION
IL 1 OVER UNNAMED CREEK
F.A.P. 332 SECTION 3CR-1
WHITE COUNTY
STATION 406+12.56
STRUCTURE NO. 097-7096

MODEL: Default
FILE NAME: S:\2021\12\10\033 - PTB 199-38 D9 - QEI - Various H\W\0-3 - IL-1 Culv in Carmi PH2\CADD\CADD Sheets\0978834_sht_001_GPE.dgn
5/16/2022 2:12:21 PM



USER NAME = smaxwell	DESIGNED - KWB	REVISED -
D978834_sht_001_GPE.dgn	CHECKED - ZLD	REVISED -
PLOT SCALE = 9:2,000' = 1" / in.	DRAWN - ZLD	REVISED -
PLOT DATE =	CHECKED -	REVISED -

STATE OF ILLINOIS
DEPARTMENT OF TRANSPORTATION

GENERAL PLAN AND ELEVATION
STRUCTURE NO. 097-7096

SHEET 1 OF 7 SHEETS

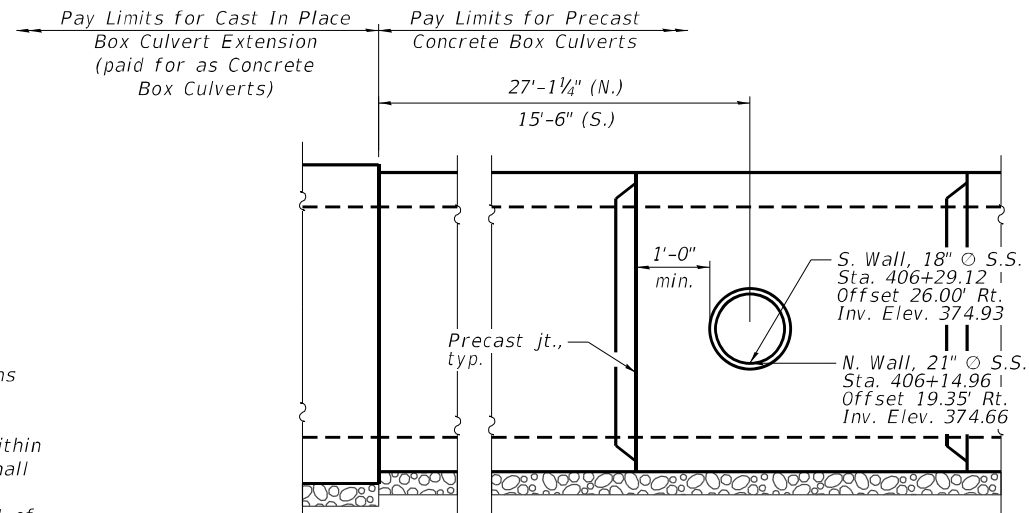
F.A.P. RTE.	SECTION	COUNTY	TOTAL SHEETS	SHEET NO.
332	3CR-1	WHITE	25	16
CONTRACT NO. 78834				
ILLINOIS FED. AID PROJECT				

TOTAL BILL OF MATERIAL

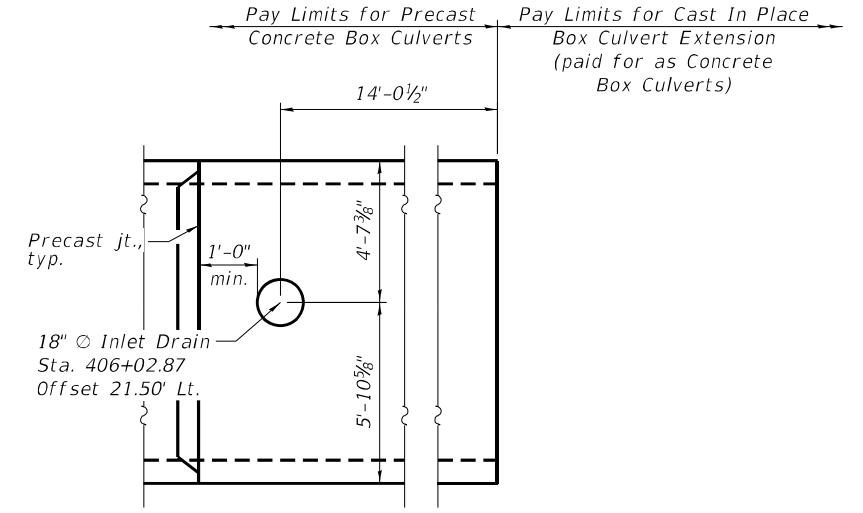
ITEM	UNIT	TOTAL
Porous Granular Embankment	Cu. Yd.	285
Removal of Existing Structures	Each	1
Structure Excavation	Cu. Yd.	272
Reinforcement Bars, Epoxy Coated	Pound	2,700
Temporary Soil Retention System	Sq. Ft.	787
Expansion Bolts 3/4"	Each	58
Concrete Box Culverts	Cu. Yd.	12.3
Precast Concrete Box Culvert 9'x5'	Foot	83.5
Geocomposite Wall Drain	Sq. Yd.	131
Membrane Waterproofing System for Buried Structures	Sq. Yd.	131

GENERAL NOTES

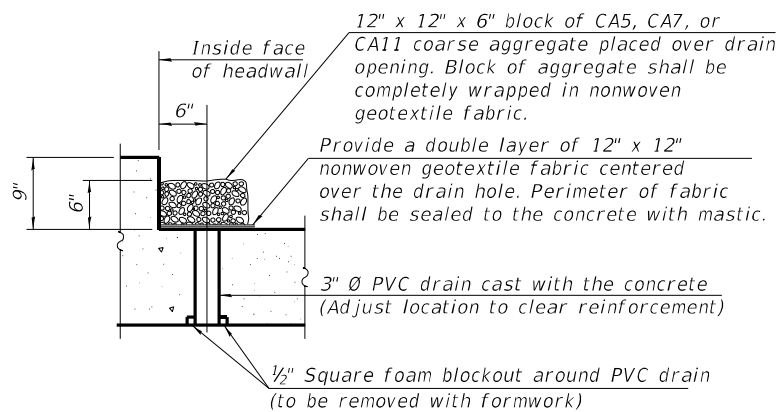
The design fill height for this box is 1.10 ft. The precast box culvert sections shall conform to the requirements of ASTM C1577.
 Drain holes shall be provided on exterior culvert walls for each precast box segment with a clear rise greater than 3 ft. The drain hole shall be located within 1/3 of the clear rise of the box culvert, shall not intercept the haunch, and shall conform to the requirements of Article 503.11 of the Standard Specification.
 Nonwoven geotextile fabric shall conform to the requirements of Art. 1080.01 of the Standard Specifications. The minimum weight of the fabric shall be 6 ounces per square yard.
 Precast concrete box culverts and box culvert end sections shall be backfilled with Porous Granular Embankment in the required excavation areas on the sides of the box culvert from the top of the box culvert to the bottom of the box culvert. This area of PGE is included in the Porous Granular Embankment pay item. The 6-inch thick layer of porous granular material required under the precast concrete box culvert, according to Section 540.06 of the standard specifications, shall also apply to the end sections. Cost of this porous granular material will not be paid for separately but shall be included in the unit price of the work for which it is required.



ELEVATION - OPENINGS IN SIDE OF PRECAST CELL

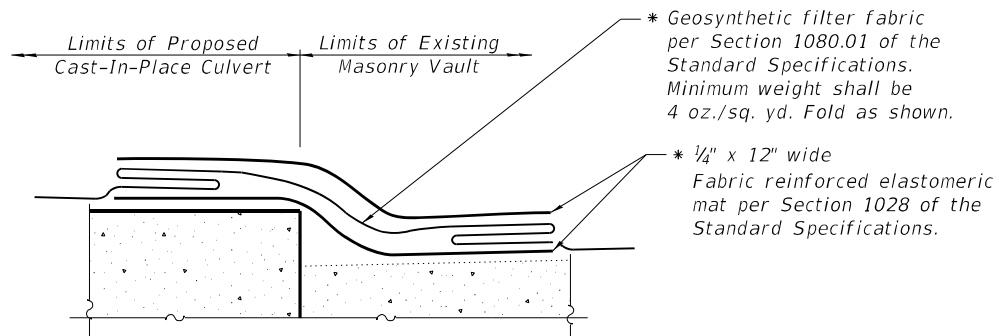


PLAN - OPENING IN TOP OF PRECAST CELL



DRAIN DETAIL

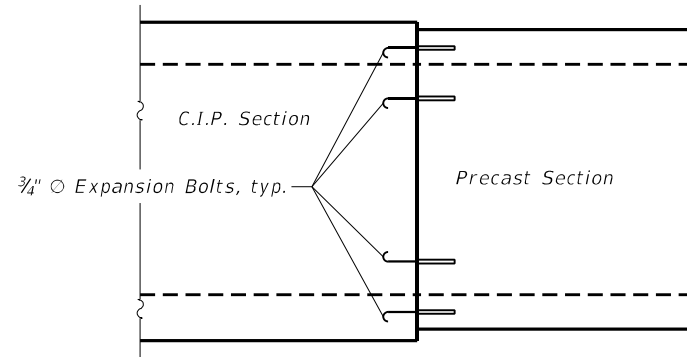
(All costs associated with furnishing and constructing the above drain detail will not be measured for payment but shall be included in the contract unit price for the associated work.)



DETAIL A

(Along each side of joint between CIP culvert and Junction Vault)

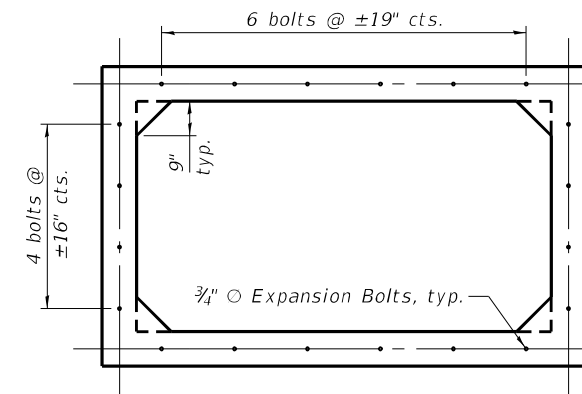
* Included in the cost of Concrete Box Culverts



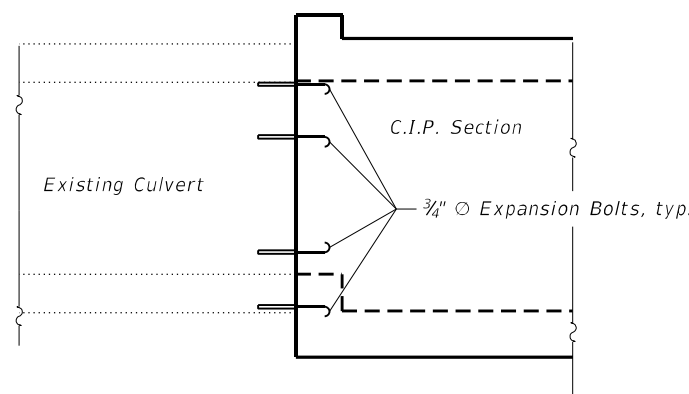
LONGITUDINAL SECTION

EXPANSION BOLT LAYOUT AT PRECAST SECTION

(40 Total - 20 Ea. End)



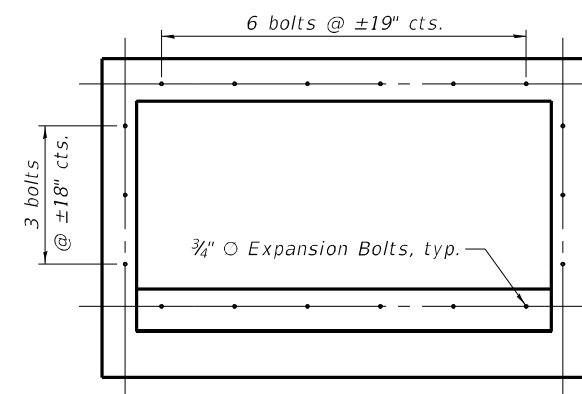
SECTION THRU BARREL



LONGITUDINAL SECTION

EXPANSION BOLT LAYOUT AT EXISTING CULVERT

(18 Total)



SECTION THRU BARREL

Notes:
 Expansions Bolts shall be 3/4" diameter hooked bolts and shall be hot dip galvanized.
 Hooked bolts shall extend a minimum of 9" into new concrete.
 Contractor may elect to install expansion bolts as part of the precast section, or install them in the field per Article 540 of the Standard Specifications.

MODEL: Default
 FILE NAME: S:\2022\12\11\033 - PTB - 199-38 D9 - QEI - Various HIWO-3 - IL-1 Culv in Carmi PH2\CADD\CADD Sheets\0978834_sht_002_GenData.dgn
 5/16/2022 2:12:22 PM



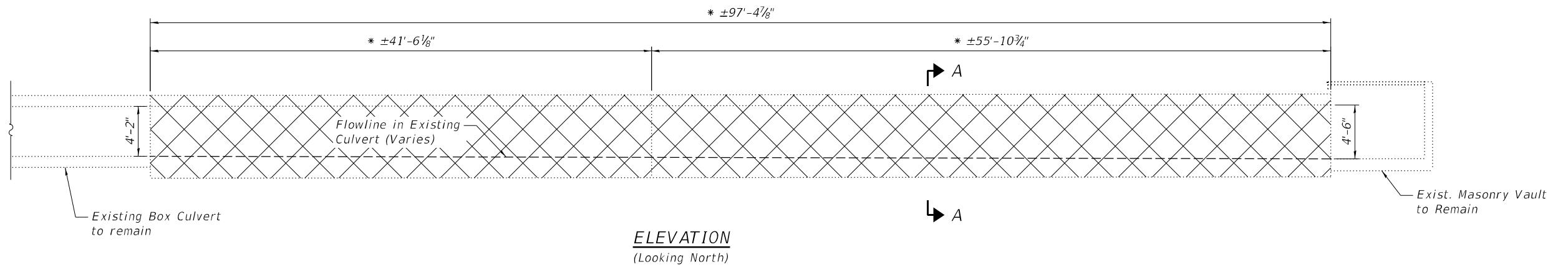
USER NAME = smaxwell	DESIGNED - KWB	REVISED -
D978834_sht_002_GenData.dgn	CHECKED - ZLD	REVISED -
PLOT SCALE = 0:2.0000" = 1"	DRAWN - ZLD	REVISED -
PLOT DATE =	CHECKED -	REVISED -

**STATE OF ILLINOIS
 DEPARTMENT OF TRANSPORTATION**

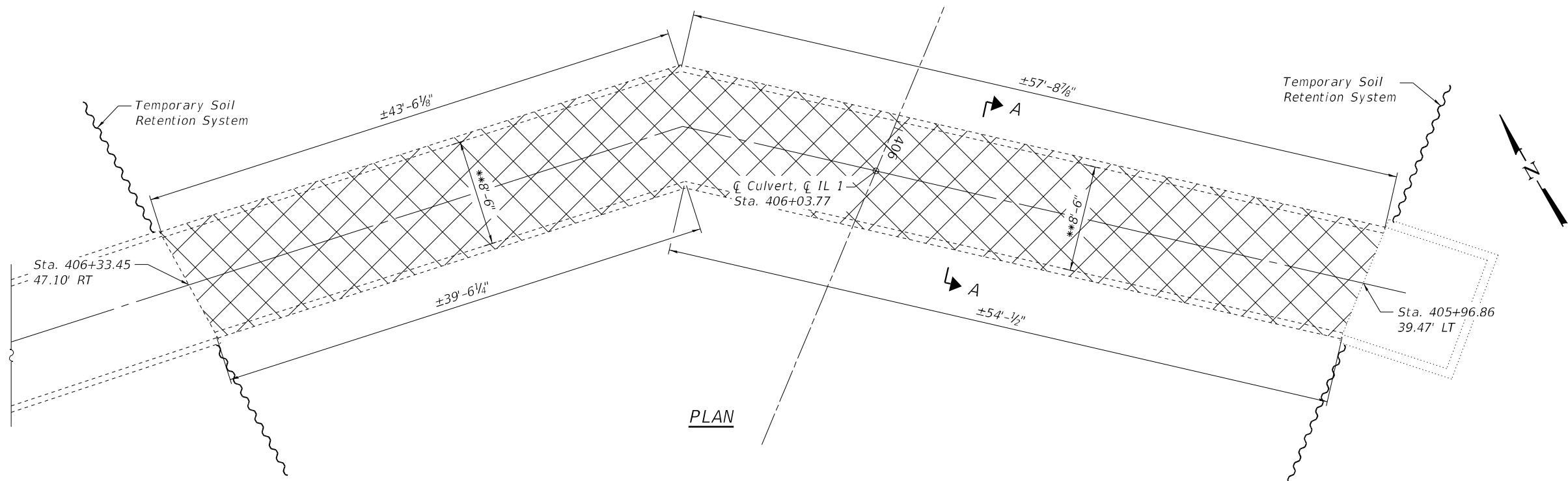
**GENERAL DATA
 STRUCTURE NO. 097-7096**

SHEET 2 OF 7 SHEETS

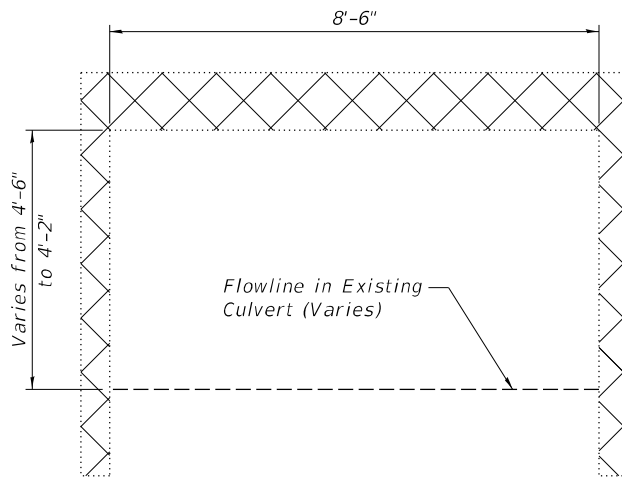
F.A.P. RTE. 332	SECTION 3CR-1	COUNTY WHITE	TOTAL SHEETS 25	SHEET NO. 17
CONTRACT NO. 78834				
ILLINOIS FED. AID PROJECT				



ELEVATION
(Looking North)



PLAN



SECTION A-A

- * Measured along C culvert
- ** Measured perpendicular to culvert

Notes:
For Temporary Soil Retention System, see Sheet 4 of 7.
The Contractor will take precautions to remain in place during installation of the Temporary Soil Retention System and Removal of Existing Structure.

BILL OF MATERIAL

Item	Unit	Total
Removal of Existing Structures	Each	1

MODEL: Default
FILE NAME: S:\2022\12\11\033 - PTB - 199-38 D9 - QEI - Various HIWO-3 - IL-1 Culv in Carmi PH2\CADD\CADD Sheets\D978834_sht_003_Removal.dgn
5/16/2022 2:12:23 PM



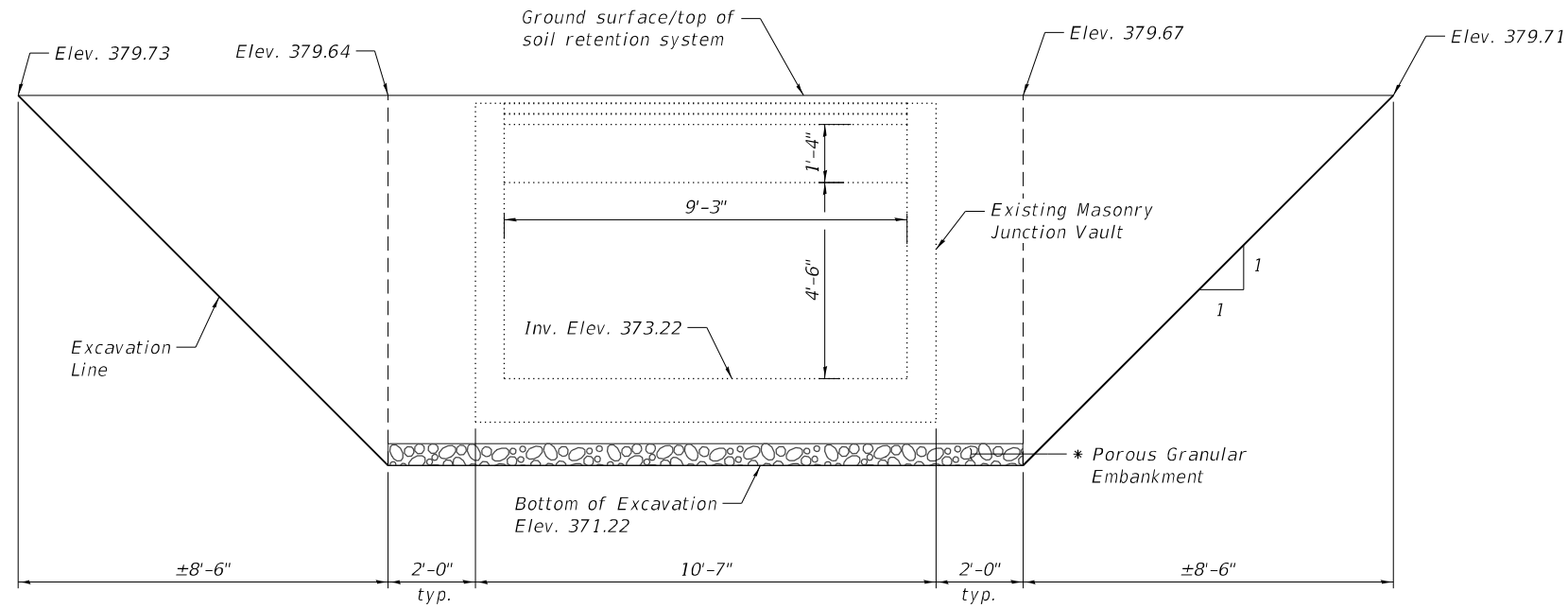
USER NAME =	smaxwell	DESIGNED -	KWB	REVISED -	
D978834_sht_003_Removal.dgn		CHECKED -	ZLD	REVISED -	
PLOT SCALE =	10:0.0000' : 1 in.	DRAWN -	ZLD	REVISED -	
PLOT DATE =		CHECKED -		REVISED -	

**STATE OF ILLINOIS
DEPARTMENT OF TRANSPORTATION**

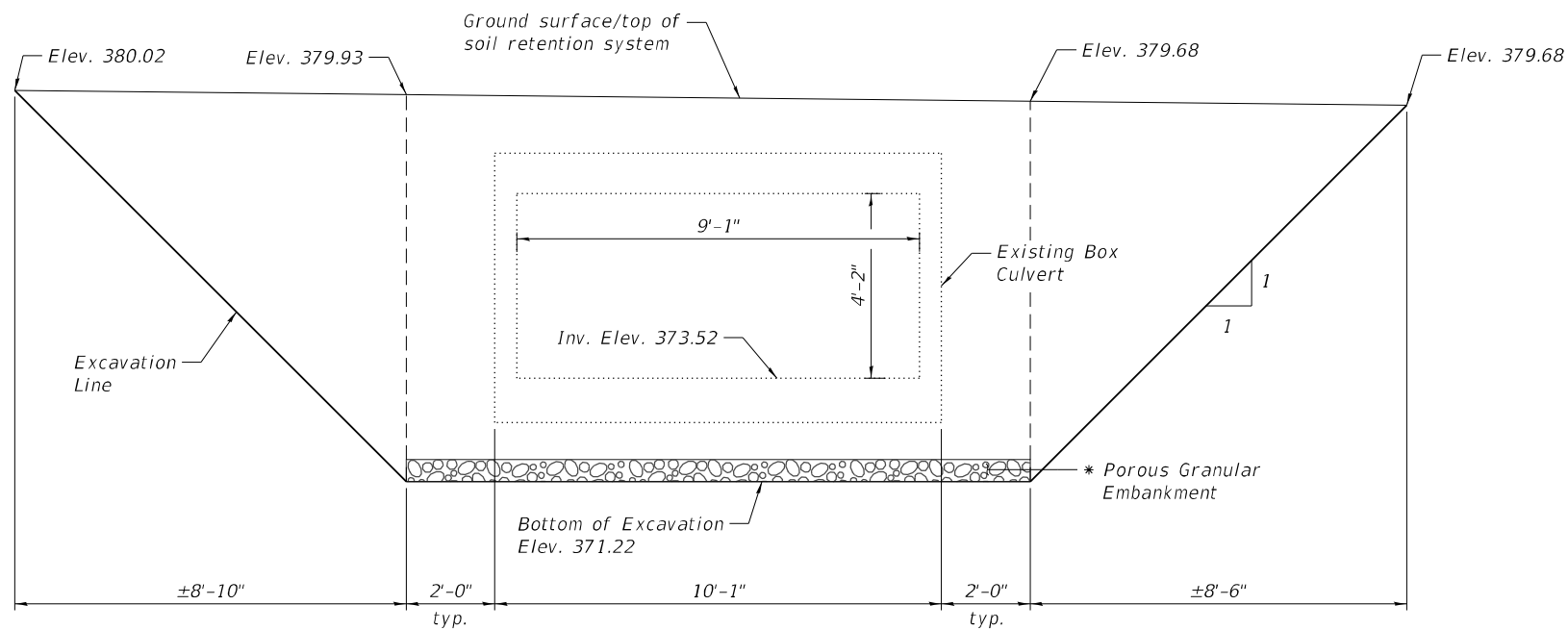
**LIMITS - REMOVAL OF EXISTING STRUCTURES
STRUCTURE NO. 097-7096**

SHEET 3 OF 7 SHEETS

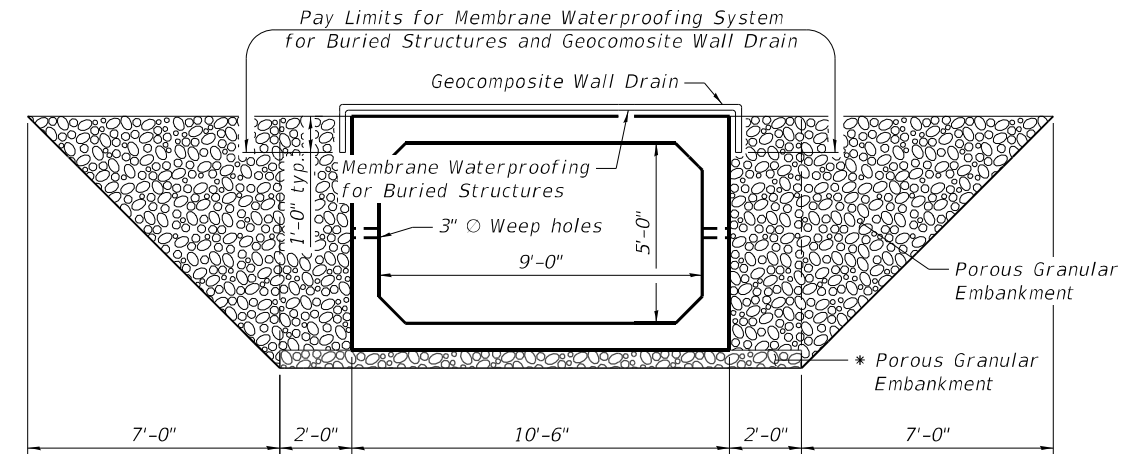
F.A.P. RTE.	SECTION	COUNTY	TOTAL SHEETS	SHEET NO.
332	3CR-1	WHITE	25	18
CONTRACT NO. 78834				
ILLINOIS FED. AID PROJECT				



STAGE I TEMPORARY SOIL RETENTION SYSTEM AT JUNCTION VAULT
 (Looking Southeast)
 (See Note 2)



STAGE I TEMPORARY SOIL RETENTION SYSTEM AT EXISTING CULVERT
 (Looking West)
 (See Note 2)



SECTION THRU PRECAST BOX CULVERT
 (Looking West)

* Included in the cost of
 Precast Concrete Box Culvert

Notes:
 Extend Porous Granular Embankment to voided area created by removal of existing culvert.
 Geocomposite Wall Drain shall be according to Section 591 of the Standard Specifications, except that concrete nails shall not be used in areas where it overlaps Membrane Waterproofing System for Buried Structures.
 Duplicate Stage I TSRS for Stage II TSRS at locations shown on Sheet 1 of 7.

BILL OF MATERIAL

Item	Unit	Total
Temporary Soil Retention System	Sq Ft	787

MODEL: Default
 FILE NAME: S:\2022\12\11\033 - PTB_199-38 D9 - QEI - Various HIW0-3 - IL-1_Culv in Carmi PH2\CADD\CADD Sheets\1978834_sht_004_TSRS.dgn
 5/16/2022 2:12:24 PM



USER NAME = smaxwell	DESIGNED - KWB	REVISED -
D978834_sht_004_TSRS.dgn	CHECKED - ZLD	REVISED -
PLOT SCALE = 0:2.0000 "/>		

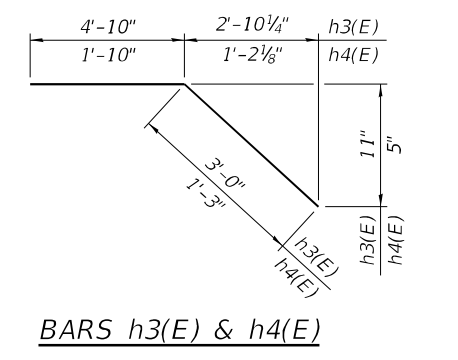
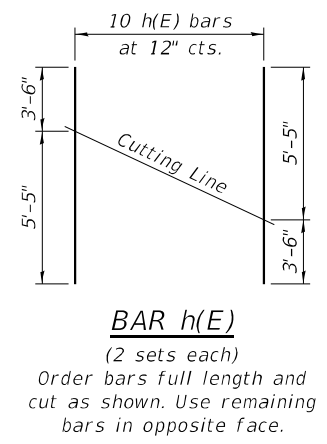
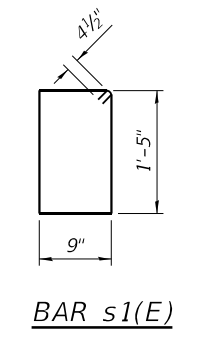
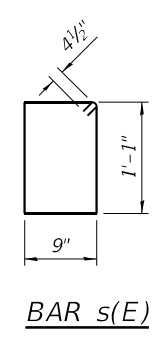
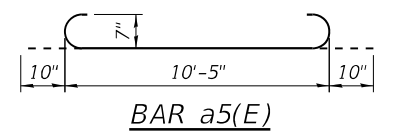
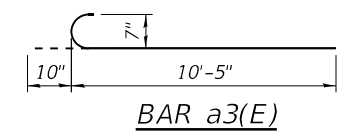
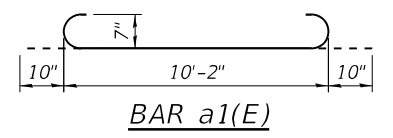
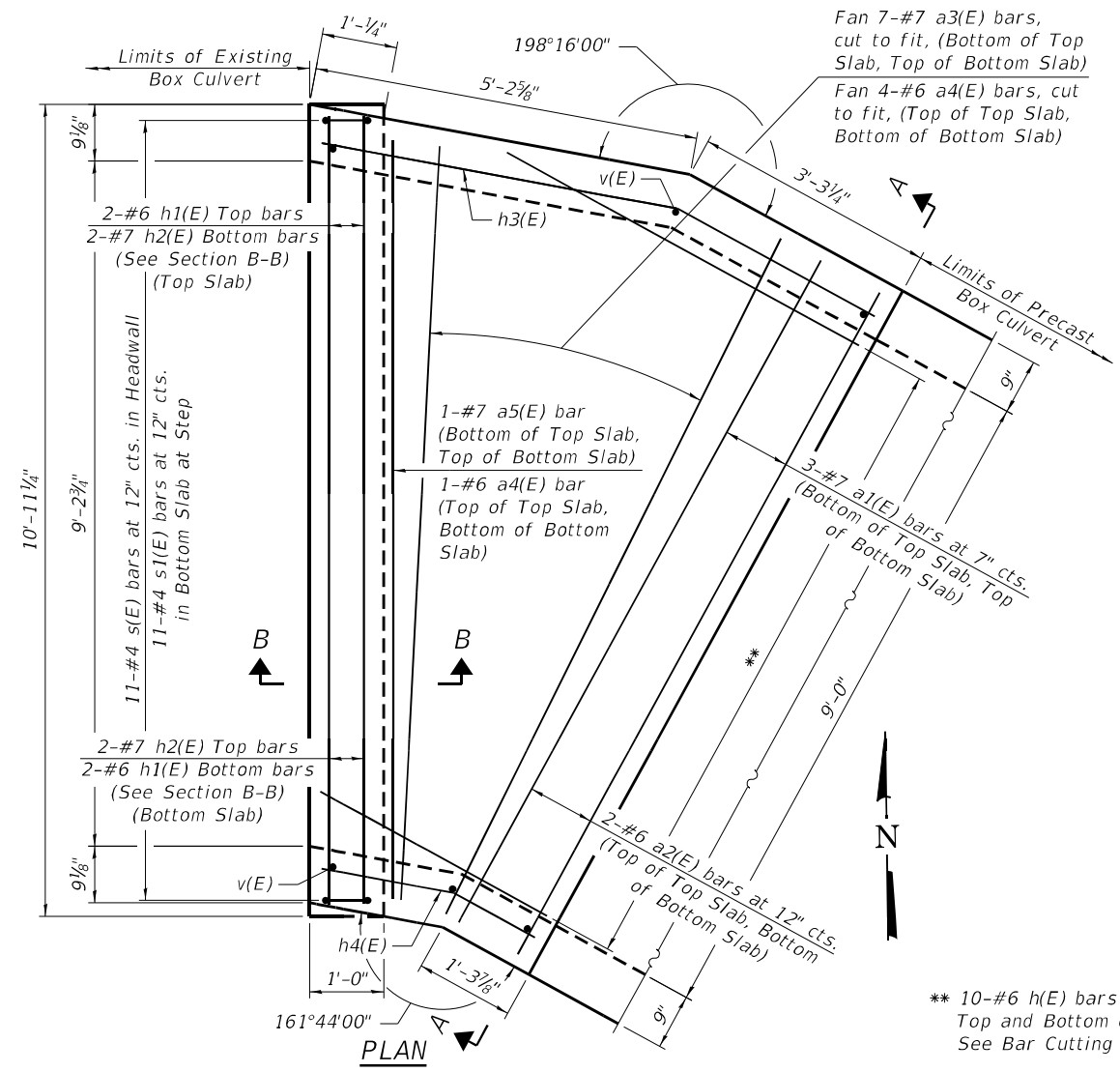
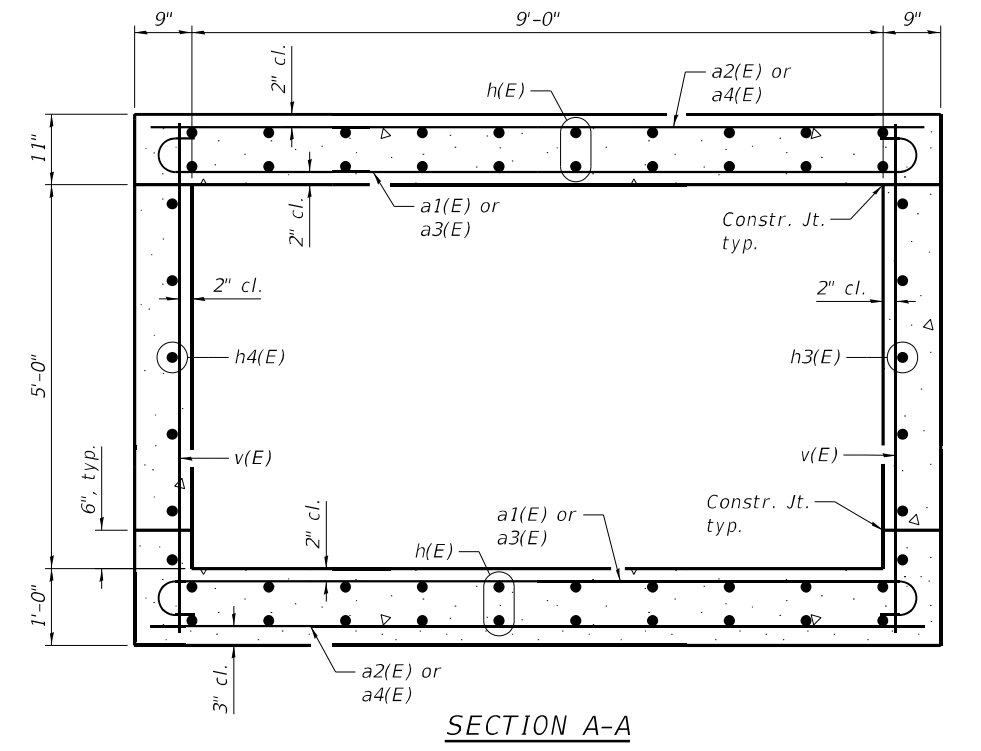
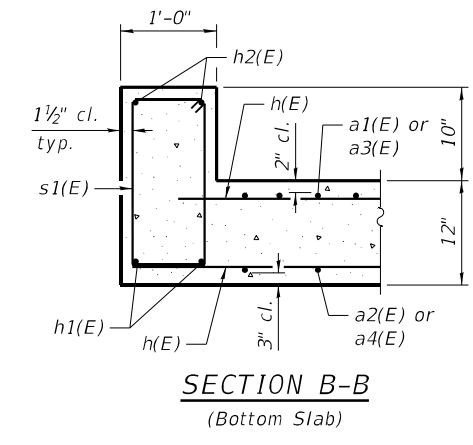
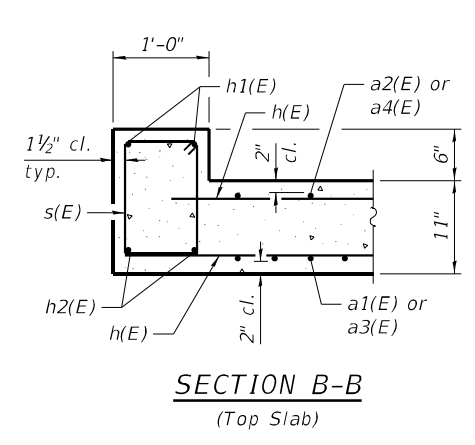
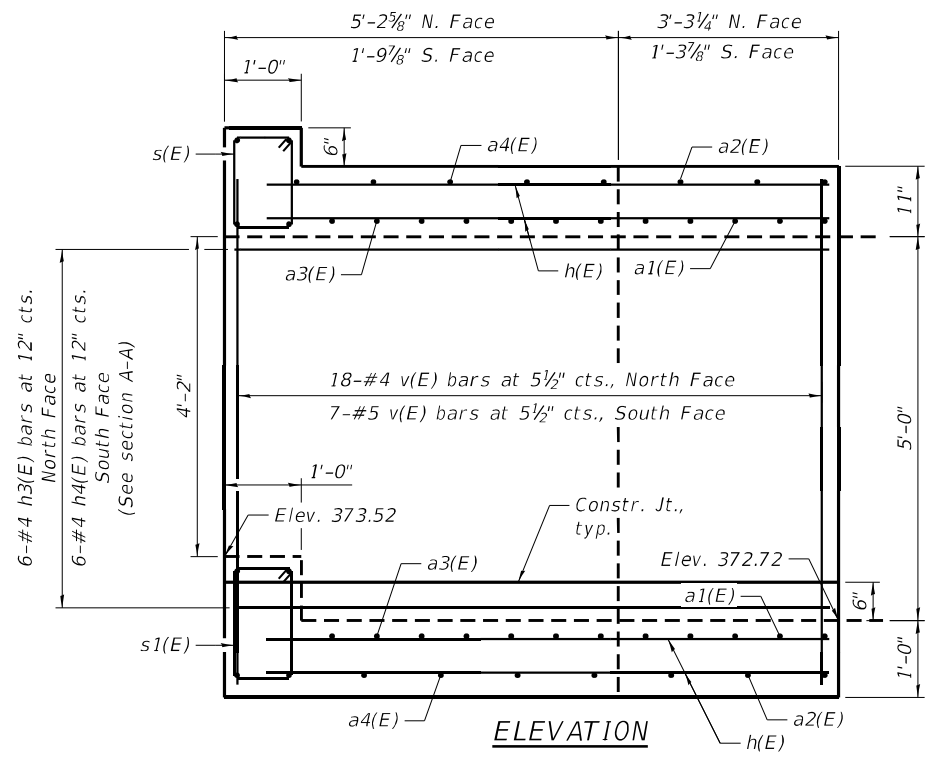
STATE OF ILLINOIS
 DEPARTMENT OF TRANSPORTATION

TEMPORARY SOIL RETENTION SYSTEM
 STRUCTURE NO. 097-7096

SHEET 4 OF 7 SHEETS

F.A.P. RTE. 332	SECTION 3CR-1	COUNTY WHITE	TOTAL SHEETS 25	SHEET NO. 19
CONTRACT NO. 78834				
ILLINOIS FED. AID PROJECT				

MODEL: Default
 FILE NAME: S:\2022\12\11\033 - PTB 199-38 D9 - QEI - Various HIW0-3 - IL-1 Culv in Carmi PH2\CADD\CADD Sheets\ID978834_sht_005_CIPatExisting.dgn
 5/16/2022 2:12:25 PM



BILL OF MATERIAL

Bar	No.	Size	Length	Shape	
a1(E)	6	#7	11'-10"	U	
a2(E)	4	#6	10'-2"	—	
a3(E)	14	#7	11'-3"	U	
a4(E)	10	#6	10'-5"	—	
a5(E)	2	#7	12'-1"	U	
h(E)	20	#6	8'-11"	—	
h1(E)	4	#6	10'-7"	—	
h2(E)	4	#7	10'-7"	—	
h3(E)	6	#4	7'-10"	—	
h4(E)	6	#4	3'-1"	—	
s(E)	11	#4	4'-5"	□	
s1(E)	11	#4	5'-1"	□	
v(E)	25	#4	6'-6"	—	
Item				Unit	Total
Reinforcement Bars, Epoxy Coated				Pound	1,380
Concrete Box Culverts				Cu. Yd.	6.5



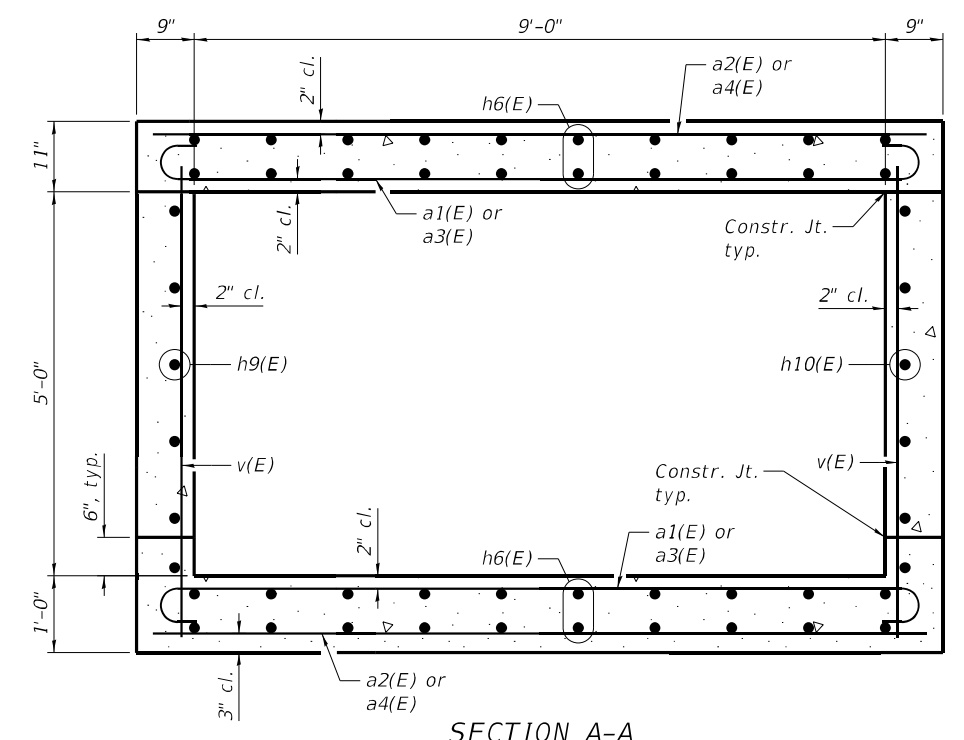
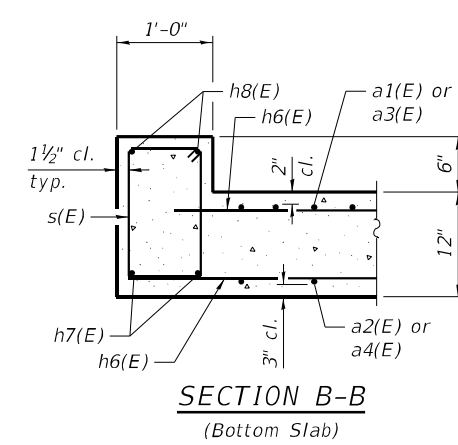
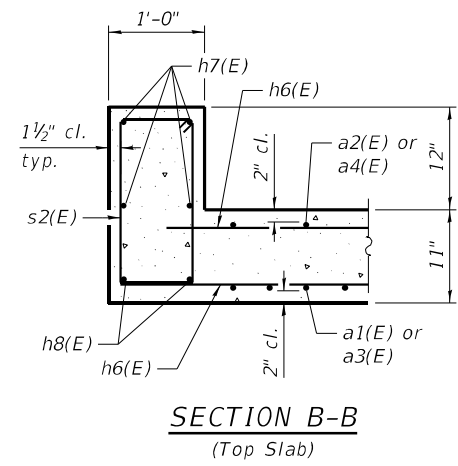
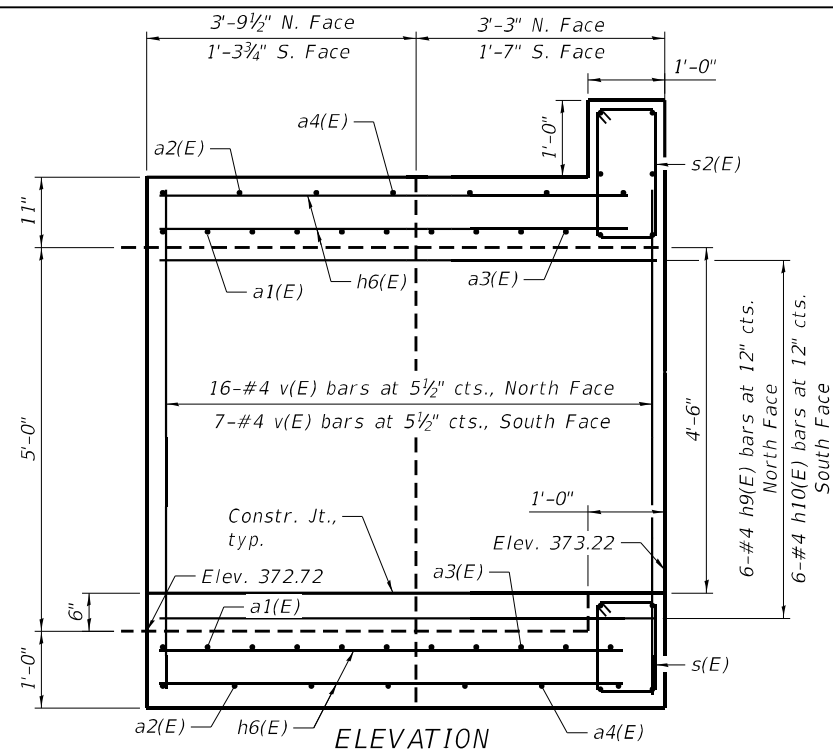
USER NAME =	smaxwell	DESIGNED -	KWB	REVISED -	
FILE NAME =	D978834_sht_005_CIPatExisting.dgn	CHECKED -	ZLD	REVISED -	
PLOT SCALE =	0:2.0000" = 1"	DRAWN -	ZLD	REVISED -	
PLOT DATE =		CHECKED -		REVISED -	

**STATE OF ILLINOIS
 DEPARTMENT OF TRANSPORTATION**

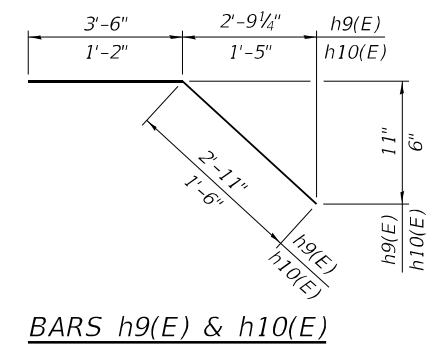
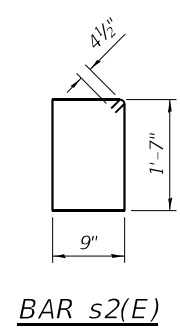
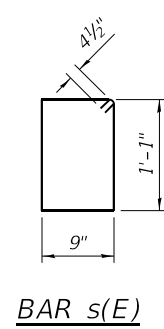
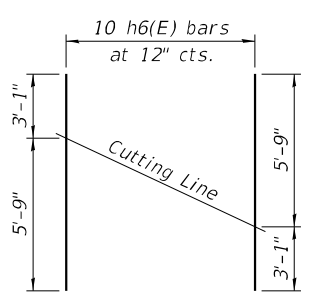
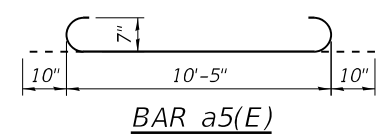
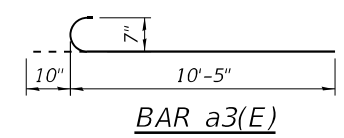
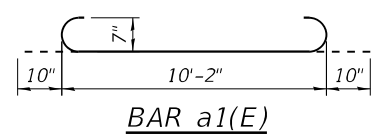
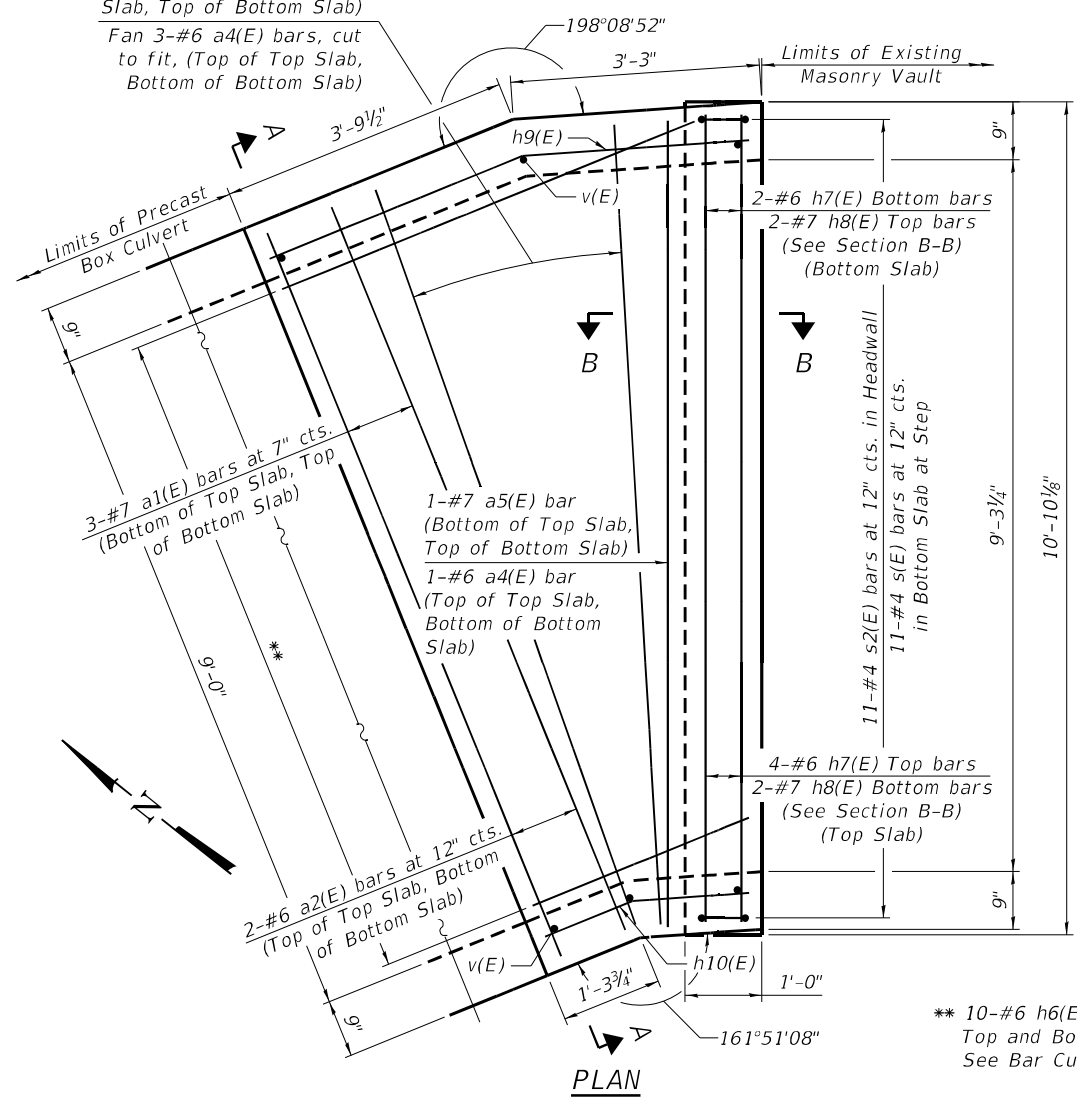
**BOX CULVERT EXTENSION DETAILS - 1
 STRUCTURE NO. 097-7096**

SHEET 5 OF 7 SHEETS

F.A.P. RTE.	SECTION	COUNTY	TOTAL SHEETS	SHEET NO.
332	3CR-1	WHITE	25	20
CONTRACT NO. 78834				
ILLINOIS FED. AID PROJECT				



Fan 6-#7 a3(E) bars, cut to fit, (Bottom of Top Slab, Top of Bottom Slab)
 Fan 3-#6 a4(E) bars, cut to fit, (Top of Top Slab, Bottom of Bottom Slab)



BILL OF MATERIAL

Bar	No.	Size	Length	Shape	
a1(E)	6	#7	11'-10"	U	
a2(E)	4	#6	10'-2"	—	
a3(E)	12	#7	11'-3"	U	
a4(E)	8	#6	10'-5"	—	
a5(E)	2	#7	12'-1"	U	
h6(E)	20	#6	8'-10"	—	
h7(E)	6	#6	10'-6"	—	
h8(E)	4	#7	10'-6"	—	
h9(E)	6	#4	6'-5"	—	
h10(E)	6	#4	2'-8"	—	
s(E)	11	#4	4'-5"	□	
s2(E)	11	#4	5'-5"	□	
v(E)	23	#4	6'-6"	—	
Item				Unit	Total
Reinforcement Bars, Epoxy Coated				Pound	1,320
Concrete Box Culverts				Cu. Yd.	5.8

MODEL: Default
 FILE NAME: S:\2022\12\11\033 - PTB - 199-38 D9 - QEI - Various HIWO-3 - IL-1 Culv in Carmi PH2\CADD\CADD Sheets\0978834_sht_006_CIPatVaultDetails.dgn
 5/16/2022 2:12:26 PM



USER NAME = smaxwell	DESIGNED - KWB	REVISED -
D978834_sht_006_CIPatVaultDetails.dgn	CHECKED - ZLD	REVISED -
PLOT SCALE = 0:2.0000 "/>		

STATE OF ILLINOIS
 DEPARTMENT OF TRANSPORTATION

BOX CULVERT EXTENSION DETAILS - 2
 STRUCTURE NO. 097-7096

SHEET 6 OF 7 SHEETS

F.A.P. RTE. 332	SECTION 3CR-1	COUNTY WHITE	TOTAL SHEETS 25	SHEET NO. 21
CONTRACT NO. 78834				
ILLINOIS FED. AID PROJECT				



SOIL BORING LOG

Date 4/16/19

ROUTE IL 1 DESCRIPTION Culvert at Creek LOGGED BY L. Estel

SECTION LOCATION 300 feet SW of int. with IL 14 in Carmi, SEC. 13, TWP. 5S, RNG. 9E, PM

COUNTY White DRILLING METHOD Hollow stem auger (8" O.D., 3.25" I.D.) HAMMER TYPE Auto SPT 140 lb

STRUCT. NO. 097-7045	DEPTH	BULGE	UCS	MOIST	Surface Water Elev. None ft	DEPTH	BULGE	UCS	MOIST
Station					Stream Bed Elev. 376.0 ft				
BORING NO. 1-S					Groundwater Elev.:				
Station 4+34					First Encounter 366.0 ft				
Offset 0.0ft from CL					Upon Completion				
Ground Surface Elev. 380.0 ft					After				

Cored Pavement, 4" HMA over 10" CONCRETE					359.50	5	B		
Stiff Brown, Moist CLAY	378.80								
		1							
		3	1.3	22					
		2	B						
Stiff Grey, Moist SILTY LOAM with rotten WOOD	376.00								
		1							
		4	1.2	19					
		3	S						
		1							
		2	1.5	22					
		3	B						
V. Stiff Brown and Grey, Moist CLAY	371.00								
		1							
		4	3.9	26					
		6	B						
M. Stiff Brown and Grey, V. Moist CLAY	368.50								
		1							
		2	0.8	29					
		3	B						
V. Stiff Brown and Grey, V. Moist CLAY	366.00								
		1							
		3	2.5	28					
		3	B						
Stiff Brown and Grey, V. Moist CLAY	363.50								
		2							
		3	1.2	32					
		5	B						
		1							
		4	1.9	30					

The Unconfined Compressive Strength (UCS) Failure Mode is indicated by (B-Bulge, S-Shear, P-Penetrometer, E-Estimated) Abbreviations W.O.H - Sampler Advanced By Weight of Hammer, W.O.P - Advanced by Weight of Pipe, B.S. - Before Seating The SPT (N value) is the sum of the last two blow values in each sampling zone (AASHTO T206) BBS, from 137 (Rev. 8-99)

File Name S:\MATERIALS\GEOTECHNICAL\UNBORING LOGS USING GINT\STATE STRUCTURES\WHITE\097-7045.GPJ Data Template D6\TEMP1.T.GDT Date Printed 7/20/19
Latitude 36.0867659 Longitude -88.1654522 Datum NAD83 Job Number



SOIL BORING LOG

Date 4/16/19

ROUTE IL 1 DESCRIPTION Culvert at Creek LOGGED BY L. Estel

SECTION LOCATION 300 feet SW of int. with IL 14 in Carmi, SEC. 13, TWP. 5S, RNG. 9E, PM

COUNTY White DRILLING METHOD Hollow stem auger (8" O.D., 3.25" I.D.) HAMMER TYPE Auto SPT 140 lb

STRUCT. NO. 097-7045	DEPTH	BULGE	UCS	MOIST	Surface Water Elev. None ft	DEPTH	BULGE	UCS	MOIST
Station					Stream Bed Elev. 376.0 ft				
BORING NO. 2-S					Groundwater Elev.:				
Station 4+76					First Encounter				
Offset 19.0ft RT					Upon Completion				
Ground Surface Elev. 379.7 ft					After				

Cored Pavement, 4" HMA over 10" CONCRETE					359.20	3	B		
Stiff Brown with specks of Red. Moist: CLAY LOAM	378.50								
		1							
		3	1.6	18					
		3	B						
Stiff Brown, Moist CLAY	375.70								
		1							
		2	2.1	22					
		3	B						
		1							
		3	1.4	20					
		4	B						
		1							
		1							
		3	1.3	25					
		3	B						
V. Stiff Brown, Moist CLAY	368.20								
		1							
		4	3.1	28					
		5	B						
		1							
		3	3.0	24					
		5	B						
V. Stiff Brownish Grey, V. Moist CLAY	363.20								
		1							
		3	2.5	29					
		5	B						
Stiff Brownish Grey, V. Moist CLAY	360.70								
		1							
		2	1.2	34					

The Unconfined Compressive Strength (UCS) Failure Mode is indicated by (B-Bulge, S-Shear, P-Penetrometer, E-Estimated) Abbreviations W.O.H - Sampler Advanced By Weight of Hammer, W.O.P - Advanced by Weight of Pipe, B.S. - Before Seating The SPT (N value) is the sum of the last two blow values in each sampling zone (AASHTO T206) BBS, from 137 (Rev. 8-99)

File Name S:\MATERIALS\GEOTECHNICAL\UNBORING LOGS USING GINT\STATE STRUCTURES\WHITE\097-7045.GPJ Data Template D6\TEMP1.T.GDT Date Printed 7/20/19
Latitude 36.0867770 Longitude -88.1653167 Datum NAD83 Job Number

MODEL: Default
FILE NAME: S:\2022\11\033 - PTB 199-38 D9 - QEI - Various HIW0-3 - IL-1 Culv in Carmi PH2\CADD\CADD Sheets\I0978834_sht_007_Borings.dgn
5/16/2022 2:12:27 PM



USER NAME = smaxwell	DESIGNED - KWB	REVISED -
D978834_sht_007_Borings.dgn	CHECKED - ZLD	REVISED -
PLOT SCALE = 0:2,0000 "/>		

STATE OF ILLINOIS
DEPARTMENT OF TRANSPORTATION

SOIL BORING LOGS
STRUCTURE NO. 097-7096

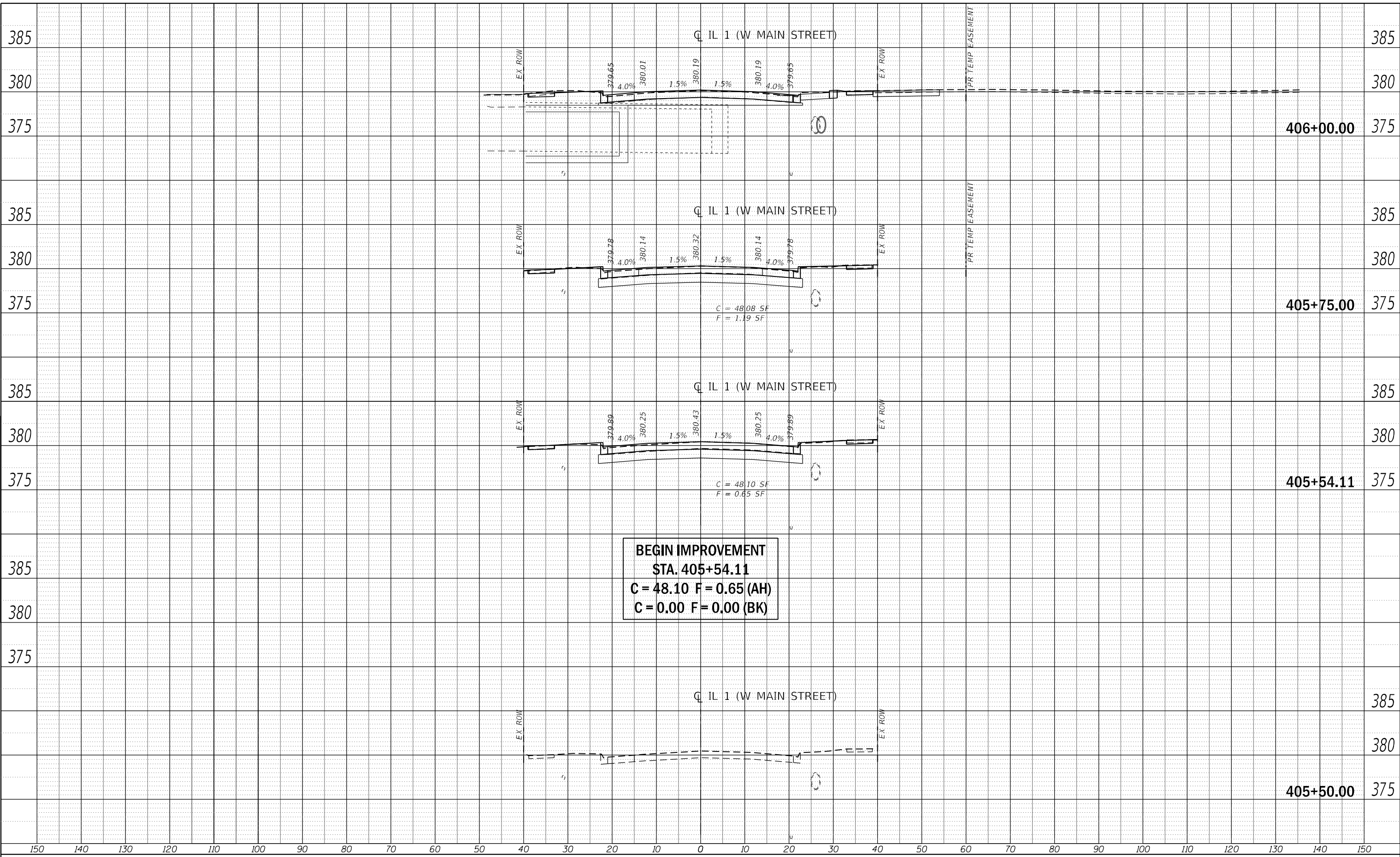
SHEET 7 OF 7 SHEETS

F.A.P. RTE.	SECTION	COUNTY	TOTAL SHEETS	SHEET NO.
332	3CR-1	WHITE	25	22
CONTRACT NO. 78834				
ILLINOIS FED. AID PROJECT				

PLAN	SURVEYED	DATE
	PLOTTED	BY
	ALIGNMENT CHECKED	
	GRADE CHECKED	
	STRUCTURE NOTATION CHECKED	
	NO.	
	CADD FILE NAME	

PROFILE	SURVEYED	DATE
	PLOTTED	BY
	GRADES CHECKED	
	STRUCTURE NOTATION CHECKED	
	NO.	
	CADD FILE NAME	

MODEL: Default
 FILE NAME: S:\2021\12\10\03 - FRP 199-38 D9 - QEI - Various H&WD-3 - IL-1 C&P - In Carri PH2\CADD\CADD Sheets\03278831_dtl_ess.dgn



**STATE OF ILLINOIS
 DEPARTMENT OF TRANSPORTATION**

**CROSS SECTIONS
 IL 1 (W MAIN ST)**

SCALE: SHEET 1 OF 3 SHEETS STA. TO STA.

USER NAME = smaxwell	DESIGNED - JB	REVISED -
PLOT SCALE = 20,0000 * / in.	DRAWN - JB	REVISED -
PLOT DATE = 5/16/2022	CHECKED - FBN	REVISED -
	DATE - 03/15/2022	REVISED -

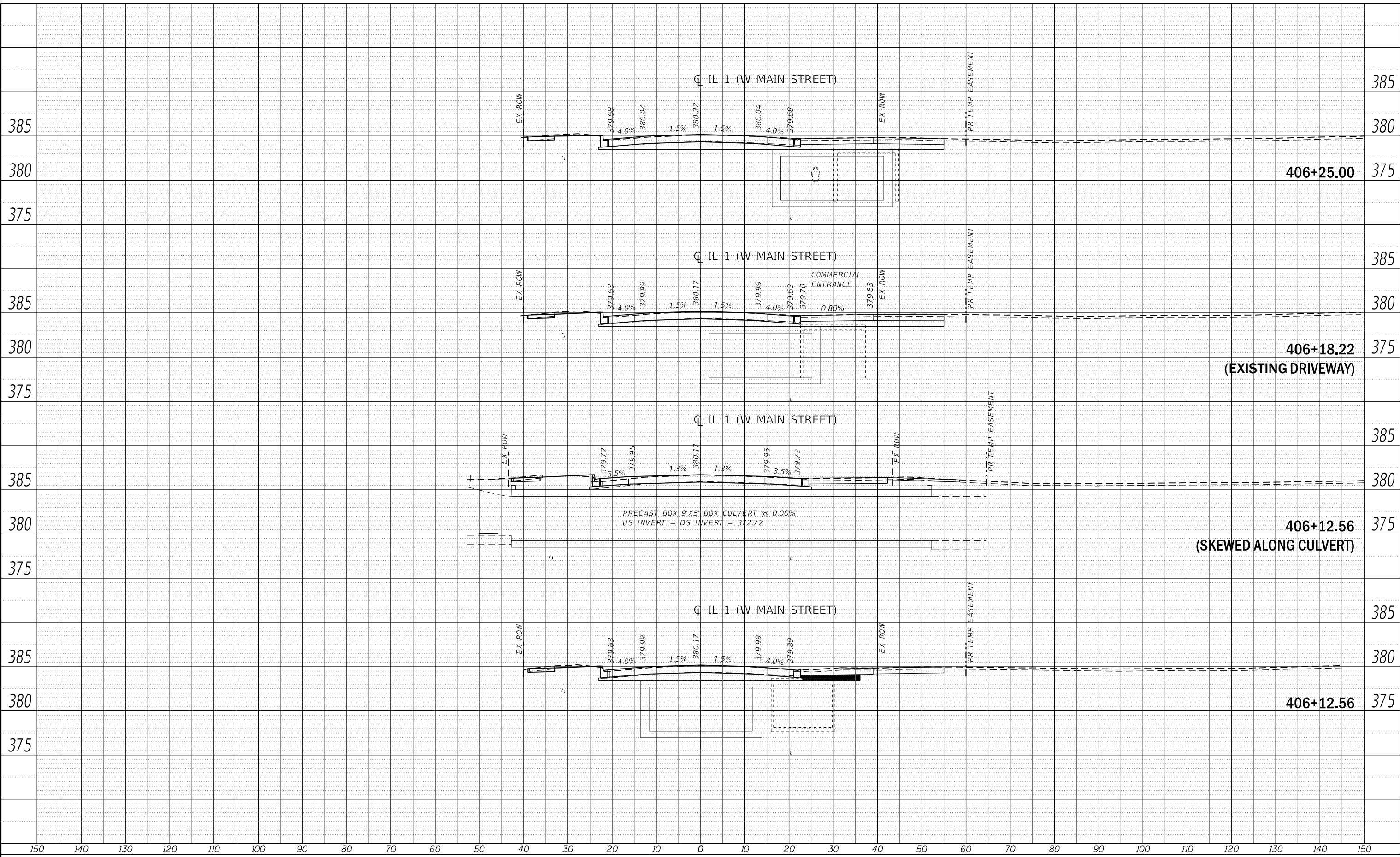
F.A.P. RTE. 332	SECTION 3CR-1	COUNTY WHITE	TOTAL SHEETS 25	SHEET NO. 23
CONTRACT NO. 78834				
ILLINOIS FED. AID PROJECT				



PLAN	SURVEYED	DATE
	PLOTTED	BY
	GRADES CHECKED	
	STRUCTURE NOTATIONS CHECKED	
	NOTE BOOK NO.	
	CADD FILE NAME	

PROFILE	SURVEYED	DATE
	PLOTTED	BY
	GRADES CHECKED	
	STRUCTURE NOTATIONS CHECKED	
	NOTE BOOK NO.	
	CADD FILE NAME	

MODEL: Default
 FILE NAME: S:\2021\12\10\03 - FFB 199-38 D9 - QEI - Various HWYD-3 - IL-1 Culv. in Cammi PH2\CADD\CADD Sheets\0278834_sht_ess.dgn



USER NAME	= smaxwell
PLOT SCALE	= 20,0000 * / in.
PLOT DATE	= 5/16/2022

DESIGNED	- JB
DRAWN	- JB
CHECKED	- FBN
DATE	- 03/15/2022

REVISED	-
REVISED	-
REVISED	-
REVISED	-

STATE OF ILLINOIS
 DEPARTMENT OF TRANSPORTATION

CROSS SECTIONS
 IL 1 (W MAIN ST)

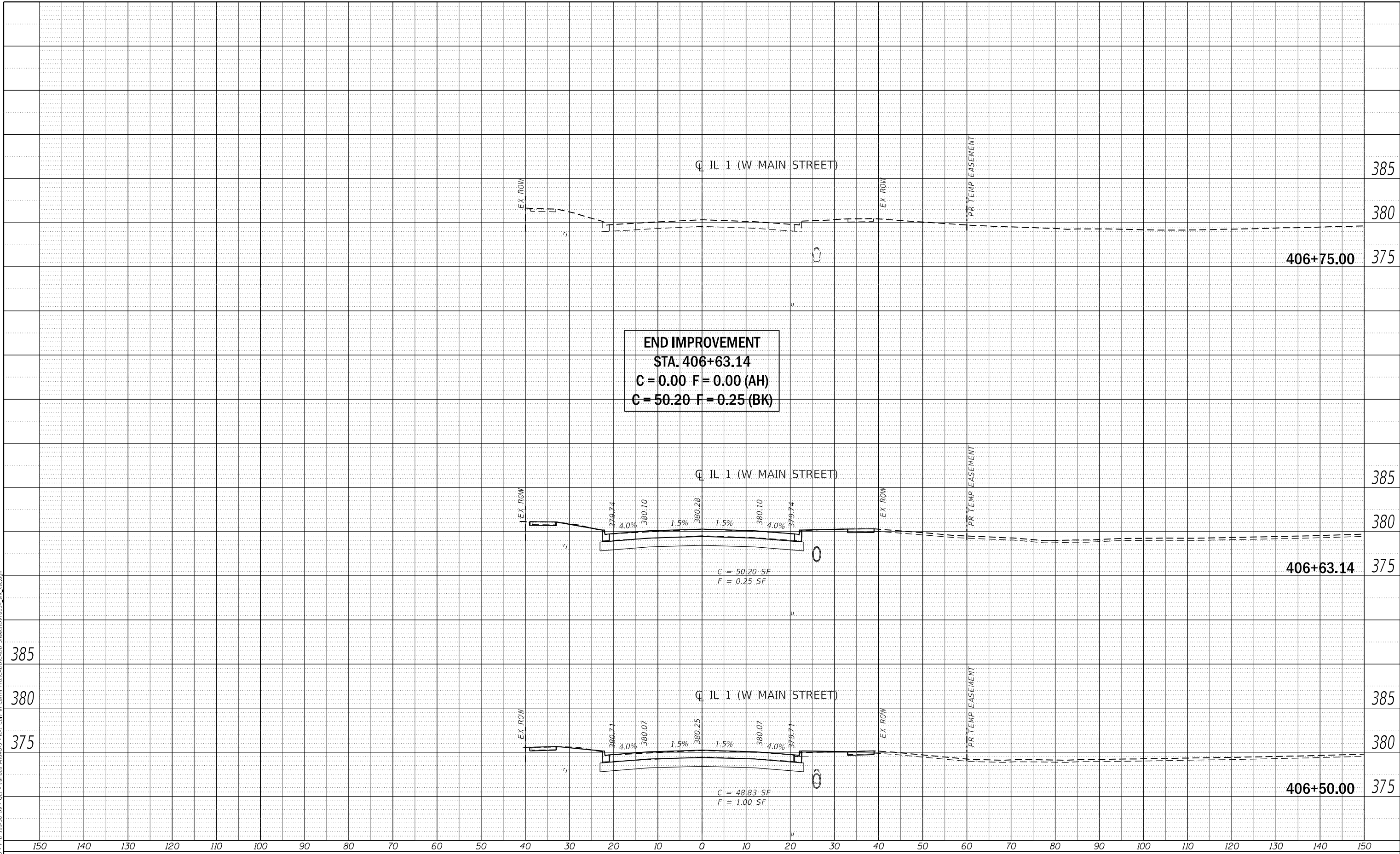
SCALE: SHEET 2 OF 3 SHEETS STA. TO STA.

F.A.P. RTE.	SECTION	COUNTY	TOTAL SHEETS	SHEET NO.
332	3CR-1	WHITE	25	24
CONTRACT NO. 78834				
ILLINOIS FED. AID PROJECT				

PLAN	SURVEYED	DATE
	PLOTTED	BY
	ALIGNMENT CHECKED	
	GRADE CHECKED	
	STRUCTURE NOTATION CHECKED	
	CADD FILE NAME	
	NO.	

PROFILE	SURVEYED	DATE
	PLOTTED	BY
	GRADES CHECKED	
	STRUCTURE NOTATION CHECKED	
	NO.	

MODEL: Default
 FILE NAME: S:\2021\12\10\03 - FRP 199-38 D9 - QEI - Various HWYD-3 - IL-1 C&R in Cami PH2\CADD\CADD Sheets\0278831_dtl_ess.dwg



**STATE OF ILLINOIS
 DEPARTMENT OF TRANSPORTATION**

**CROSS SECTIONS
 IL 1 (W MAIN ST)**

SCALE: SHEET 3 OF 3 SHEETS STA. TO STA.

F.A.P. RTE.	SECTION	COUNTY	TOTAL SHEETS	SHEET NO.
332	3CR-1	WHITE	25	25
CONTRACT NO. 78834				
ILLINOIS FED. AID PROJECT				



USER NAME =	smaxwell
PLOT SCALE =	20,0000 * / in.
PLOT DATE =	5/16/2022

DESIGNED -	JB
DRAWN -	JB
CHECKED -	FBN
DATE -	03/15/2022

REVISED -	
REVISED -	
REVISED -	
REVISED -	