

STATE OF ILLINOIS  
DEPARTMENT OF TRANSPORTATION

F.A.P. RTE.	SECTION	COUNTY	TOTAL SHEETS	SHEET NO.
NA	D4 PARKING LOT RESURF 2022	KNOX	17	1
		ILLINOIS	CONTRACT NO. 68H08	

INDEX OF SHEETS

1. COVER SHEET
2. GENERAL NOTES & MIX DESIGN
3. SUMMARY OF QUANTITIES
4. SCHEDULE OF QUANTITIES
5. PROPOSED PLAN
- 6-7. PCC PAVEMENT DETAILS
8. INLET ADJUST DETAIL
- 9-17. CROSS SECTIONS

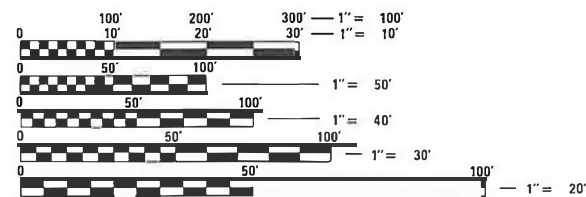
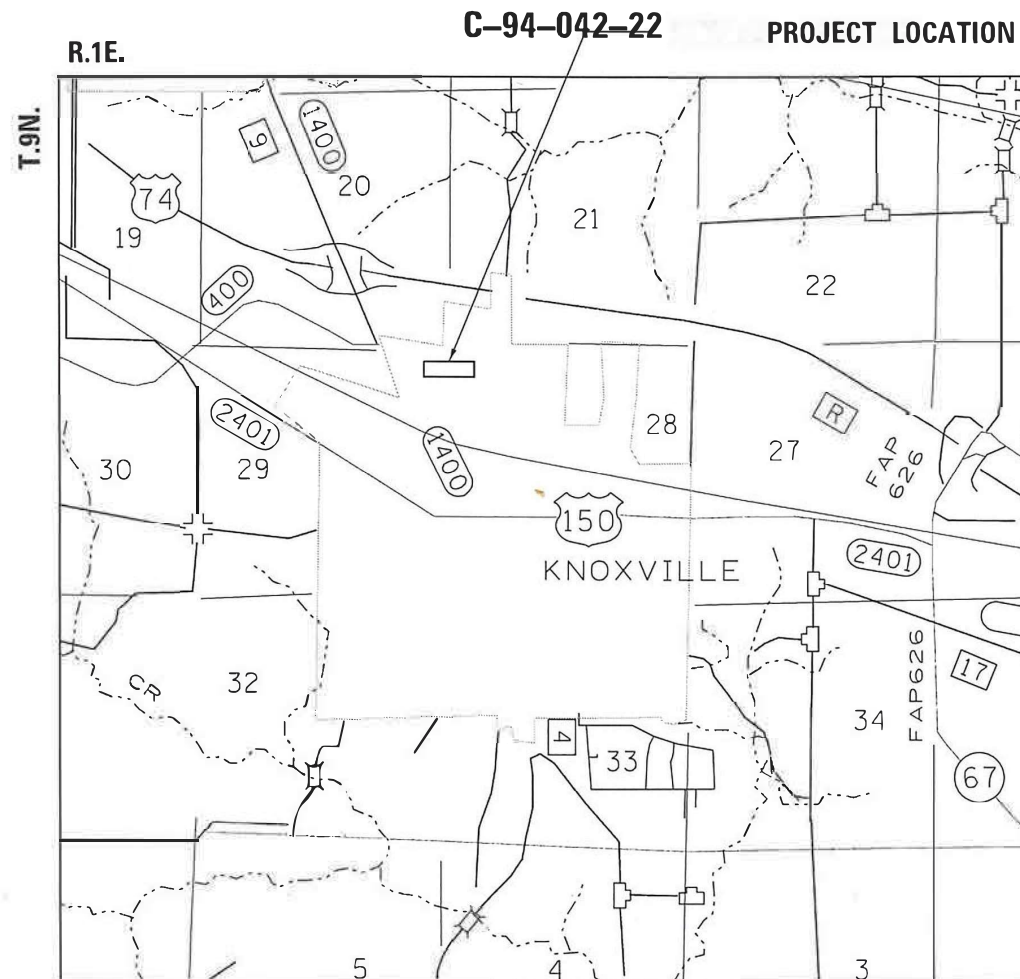
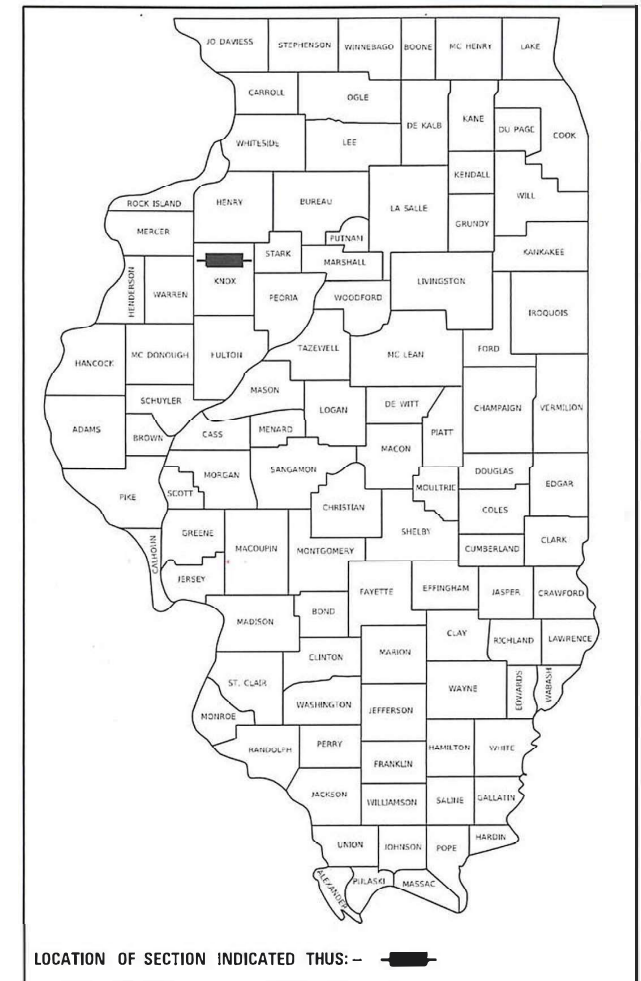
HIGHWAY STANDARDS

- 420001-10
- 420701-03
- 701901-08

# PROPOSED HIGHWAY PLANS

## ROUTE KNOXVILLE MAINTENANCE YARD SECTION D4 PARKING LOT RESURF 2022 CAPITAL IMPROVEMENT KNOX COUNTY

D-94-027-22



FULL SIZE PLANS HAVE BEEN PREPARED USING STANDARD ENGINEERING SCALES. REDUCED SIZED PLANS WILL NOT CONFORM TO STANDARD SCALES. IN MAKING MEASUREMENTS ON REDUCED PLANS, THE ABOVE SCALES MAY BE USED.

J.U.L.I.E.  
JOINT UTILITY LOCATION INFORMATION FOR EXCAVATORS  
1-800-892-0123  
OR 811

PROJECT ENGINEER: RICH DOTSON 309-671-3455  
PROJECT MANAGER: ANNA DEVINE 309-671-3475  
CATALOG NO. 036318-00D  
CONTRACT NO. 68H08

GROSS LENGTH = 850 FT. = 0.16 MILE  
NET LENGTH = 850 FT. = 0.16 MILE

DESCRIPTION

THIS PROJECT CONSISTS OF MILLING AND RESURFACING THE EXISTING PARKING AREA, ALONG WITH ADDING ADDITIONAL PCC PARKING AND DRIVING AREAS AT THE KNOXVILLE STORAGE YARD, SOUTH OF I-74 ON CH 9 AND ANY OTHER COLLATERAL WORK NECESSARY.

STATE OF ILLINOIS  
DEPARTMENT OF TRANSPORTATION

SUBMITTED July 7 2022  
Tom A. Jones REGION THREE ENGINEER

August 19, 2022 [Signature]  
ENGINEER OF DESIGN AND ENVIRONMENT

August 19, 2022 [Signature]  
DIRECTOR OF HIGHWAYS PROJECT IMPLEMENTATION

PRINTED BY THE AUTHORITY  
OF THE STATE OF ILLINOIS

**GENERAL NOTES**

**COMMITMENTS**

Commitments are not to be altered without the written approval of all parties to which the commitment was made.

There are no commitments included with this contract.

**ENVIRONMENTAL REVIEWS**

Prior to the use of any proposed borrow areas, use areas (temporary access roads, detours, run-arounds, etc.) and/or waste areas, the Contractor shall file the required environmental resource request surveys according to Section 107.22 of the Standard Specifications. These surveys are required in order for the Department to conduct cultural and biological resource surveys for the proposed site.

The required environmental resource documentation shall include the following:

- \* BDE Form 2289 (Borrow Site Review)
- \* BDE Form 2290 (Waste/Use Area Review)
- \* A location map showing the size limits and location of the use area
- \* Color photographs depicting the use area
- \* Borrow Area Entry Agreement form – D4 PI0101

Prior to any waste materials being removed from the construction site the required environmental resource surveys shall be obtained and filed by the Contractor. Excess waste products removed from the construction site shall be disposed of as required in Section 202.03 of the Standard Specifications.

Any protruding metal bars shall be removed prior to the disposal of broken concrete at approved disposal sites.

Please note that a minimum of four weeks shall be allowed for the District to obtain the required waste site environmental clearances and six weeks for the required borrow site environmental clearances.

**MIX DESIGN**

The following mixture requirements are applicable for this project:

Location(s):	Parking Surface	Parking Surface		
Mixture Use(s):	Surface Lift	Binder Lifts (Buildup to Building Apron)		
AC/PG:	PG 58-28	PG 58-28		
Design Air Voids:	4.0% @ N=50	4.0% @ N=50		
Mixture Composition: (Mixture Gradation)	IL 9.5	IL 19.0		
Friction Aggregate:	Mix C	N/A		
Quality Management Program:	QCQA	QCQA		
MTD:	No	No		

Note:  
 1) Individual lift thickness of each mix type will be no less than 3 times nominal maximum aggregate size and no more than 6 times nominal  
 2) For design purposes, mixture weight for all mixes is determined to be 112.0 lb/s.y./in., unless otherwise noted.  
 3) Sublot sizes for PFP and QCP mixes will be 600 tons, unless otherwise agreed to by the Engineer and the paving contractor.

MODEL: Default  
 FILE: \\na11e-pw-bentley.com\P\INDOT\Documents\DOT Offices\District 4\Project\104\_68H08\CADD\104\_68H08\CAD\Sheets\10468H08-nt-cover.dgn

USER NAME = \$USERS	DESIGNED -	REVISED -
	DRAWN -	REVISED -
PLOT SCALE = 1:100	CHECKED -	REVISED -
PLOT DATE = 7/7/2022	DATE -	REVISED -

**STATE OF ILLINOIS  
DEPARTMENT OF TRANSPORTATION**

**GENERAL NOTES AND MIX DESIGN**

SCALE: SHEET 1 OF 1 SHEETS STA. TO STA.

F.A. RTE.	SECTION	COUNTY	TOTAL SHEETS	SHEET NO.
NA	D4 PARKING LOT RESURF	KNOX	17	2
			CONTRACT NO. 68H08	
		ILLINOIS FED. AID PROJECT		

CODE NO.	ITEM	UNIT	TOTAL QUANTITY	CONSTR.
				CODE 0005 PARKING LOT KNOX 100% STATE RURAL
20200100	EARTH EXCAVATION	CU YD	450	450
31101000	SUBBASE GRANULAR MATERIAL, TYPE B	TON	526	526
40600290	BITUMINOUS MATERIALS (TACK COAT)	POUND	4497	4497
40603080	HOT-MIX ASPHALT BINDER COURSE, 1L-19.0, N50	TON	84	84
40604050	HOT-MIX ASPHALT SURFACE COURSE, 1L-9.5, MIX "C", N50	TON	616	616
42000060	WELDED WIRE REINFORCEMENT	SQ YD	2018	2018
42000301	PORTLAND CEMENT CONCRETE PAVEMENT 8" (JOINTED)	SQ YD	2018	2018
44000100	PAVEMENT REMOVAL	SQ YD	69	69
44000157	HOT-MIX ASPHALT SURFACE REMOVAL, 2"	SQ YD	4956	4956
60260100	INLETS TO BE ADJUSTED	EACH	1	1
67100100	MOBILIZATION	L SUM	1	1
X1200251	CONCRETE APRON FOR INLET	EACH	1	1
X4401198	HOT-MIX ASPHALT SURFACE REMOVAL, VARIABLE DEPTH	SQ YD	539	539

MODEL: Default  
 FILE: M:\GIS\p\illinois\benley.com\p\DOT\Documents\DOT\_Offices\Dirct. f\Project\104\_68H08\CAD\Drawings\CAD\Drawings\10468H08-104500.dgn

USER NAME = \$USERS	DESIGNED -	REVISED -
PLOT SCALE = 1:100	DRAWN -	REVISED -
PLOT DATE = 7/7/2022	CHECKED -	REVISED -
	DATE -	REVISED -

**STATE OF ILLINOIS  
DEPARTMENT OF TRANSPORTATION**

**SUMMARY OF QUANTITIES**

SCALE: SHEET OF SHEETS STA. TO STA.

F.A.P. RTE.	SECTION	COUNTY	TOTAL SHEETS	SHEET NO.
NA	D4 PARKING LOT RESURF	KNOX	17	3
			CONTRACT NO. 68H08	
ILLINOIS FED. AID PROJECT				

PARKING LOT MATERIALS TABLE											
LOCATION	AREA	EARTH EXCAVATION	HOT-MIX ASPHALT SURFACE REMOVAL, 2"	HOT-MIX ASPHALT SURFACE REMOVAL, VARIABLE DEPTH	BITUMINOUS MATERIALS (TACK COAT)	SUBBASE GRANULAR MATERIAL, TYPE B	HOT-MIX ASPHALT SURFACE COURSE, IL-9.5, MIX "C", N50	HOT - MIX ASPHALT BINDER COURSE, IL - 19.0, N50	PAVEMENT REMOVAL	PORTLAND CEMENT CONCRETE PAVEMENT 8" (JOINTED)	WELDED WIRE REINFORCEMENT
				0" - 3"			2"	VARIES			
	SQ YD	CU YD	SQ YD	SQ YD	0.08LBS/SQ FT POUND	VAR. TON	TON	TON	SQ YD	SQ YD	SQ YD
<b>KNOX MAINTENANCE YARD</b>											
Main Lot	4956.4		4956.4		3568.6		555.1				
Location 1	208.4	63.6				47.5				208.4	208.4
Location 2	216.5	57.5				49.3				216.5	216.5
Location 3	172.2	54.8				39.2				172.2	172.2
Location 4	475.7	104.7				111.3		68.8		475.7	475.7
Location 5	529.8	75.6				183.1				529.8	529.8
Location 6	264.4	42.6				60.9				264.4	264.4
Location 7	538.9			538.9	928.8		60.4	84.1			
Location 8	150.9	52.0				34.4				150.9	150.9
<b>TOTALS</b>		<b>450</b>	<b>4956</b>	<b>539</b>	<b>4497</b>	<b>526</b>	<b>616</b>	<b>84</b>	<b>69</b>	<b>2018</b>	<b>2018</b>

LOCATION	INLETS TO BE ADJUSTED	CONCRETE APRON FOR INLET
STA	EACH	EACH
4+22	1	1
<b>TOTALS</b>	<b>1</b>	<b>1</b>

MOBILIZATION	
LOCATION	L SUM
Jobsite	1
<b>TOTAL</b>	<b>1</b>

MODEL: Default  
 FILE: Mainfile.pxl  
 SUBJECT: new benchtop.com/PW/IDOT/Documents/IDOT\_offices/Dir/rdct\_4/Project/ID4\_68H08/CADD/Data/CAD/Pkts/ID4\_68H08-INT-sched.xls.dgn

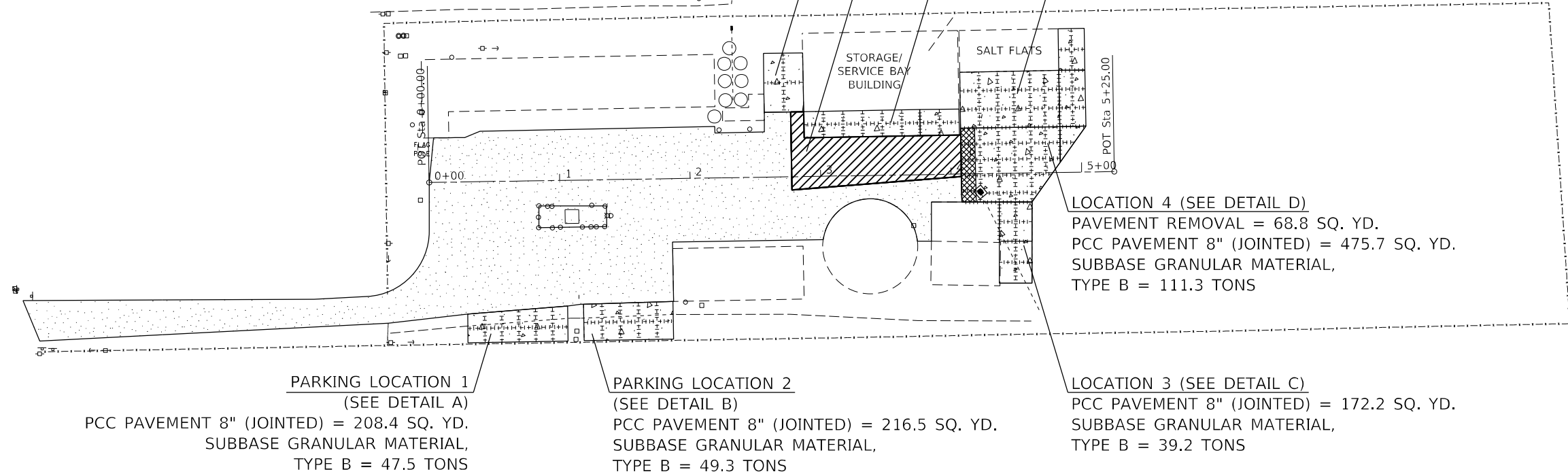
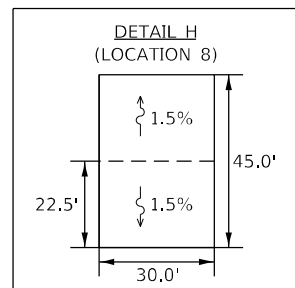
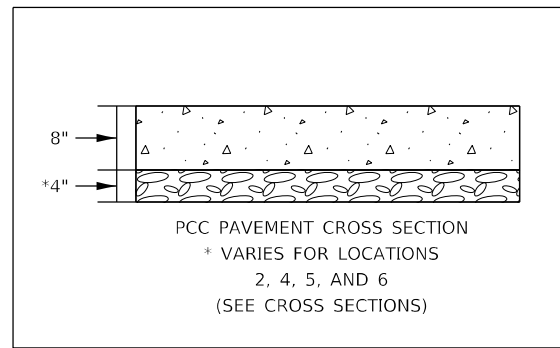
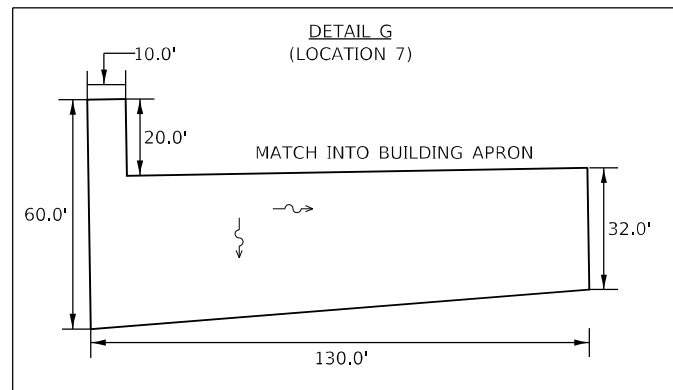
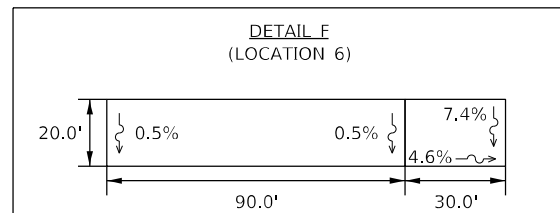
USER NAME = \$USERS	DESIGNED -	REVISED -
	DRAWN -	REVISED -
PLOT SCALE = 1:100	CHECKED -	REVISED -
PLOT DATE = 7/7/2022	DATE -	REVISED -

**STATE OF ILLINOIS**  
**DEPARTMENT OF TRANSPORTATION**

SCHEDULE OF QUANTITIES			
SCALE:	SHEET	OF SHEETS	STA. TO STA.

F.A.P. RTE.	SECTION	COUNTY	TOTAL SHEETS	SHEET NO.
NA	D4 PARKING LOT RESURF	KNOX	17	4
CONTRACT NO. 68H08				
ILLINOIS FED. AID PROJECT				

LEGEND	
	MILL AND RESURFACE, 2.0"
	PCC PAVEMENT, 8"
	SUBBASE
	PAVEMENT REMOVAL
	HMA SURFACE REMOVAL, VARIABLE DEPTH
	SAW CUT JOINT



LOCATION 8 (SEE DETAIL H)  
PCC PAVEMENT 8" (JOINTED) = 150.9 SQ. YD.  
SUBBASE GRANULAR MATERIAL, TYPE B = 34.4 TONS

LOCATION 7 (SEE DETAIL G)  
HMA SURF. REMOVAL, VARIABLE DEPTH = 539.0 SQ. YD.  
2" HMA SURFACE = 60.4 TONS  
HMA BINDER = 84.1 TONS  
(VARIES 2"-8")

LOCATION 6 (SEE DETAIL F)  
PCC PAVEMENT 8" (JOINTED) = 264.4 SQ. YD.  
SUBBASE GRANULAR MATERIAL, TYPE B = 60.9 TONS

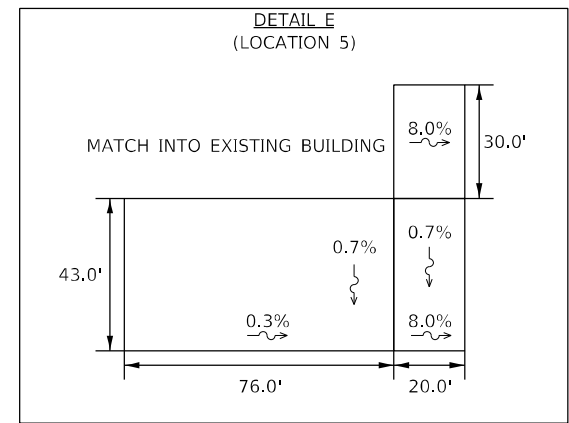
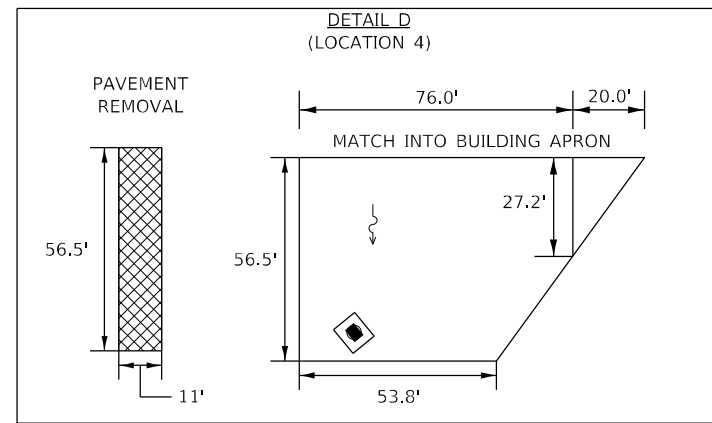
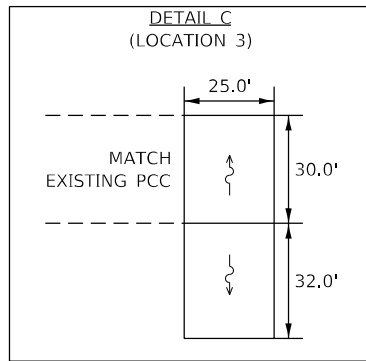
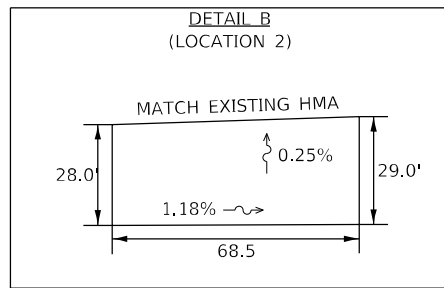
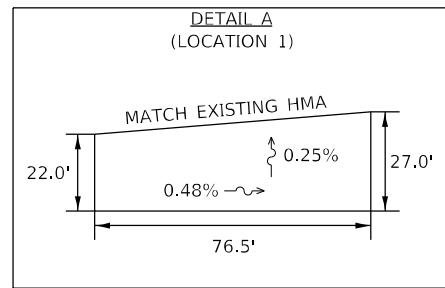
LOCATION 5 (SEE DETAIL E)  
PCC PAVEMENT 8" (JOINTED) = 529.8 SQ. YD.  
SUBBASE GRANULAR MATERIAL, TYPE B = 183.1 TONS

LOCATION 4 (SEE DETAIL D)  
PAVEMENT REMOVAL = 68.8 SQ. YD.  
PCC PAVEMENT 8" (JOINTED) = 475.7 SQ. YD.  
SUBBASE GRANULAR MATERIAL, TYPE B = 111.3 TONS

LOCATION 3 (SEE DETAIL C)  
PCC PAVEMENT 8" (JOINTED) = 172.2 SQ. YD.  
SUBBASE GRANULAR MATERIAL, TYPE B = 39.2 TONS

PARKING LOCATION 1 (SEE DETAIL A)  
PCC PAVEMENT 8" (JOINTED) = 208.4 SQ. YD.  
SUBBASE GRANULAR MATERIAL, TYPE B = 47.5 TONS

PARKING LOCATION 2 (SEE DETAIL B)  
PCC PAVEMENT 8" (JOINTED) = 216.5 SQ. YD.  
SUBBASE GRANULAR MATERIAL, TYPE B = 49.3 TONS



MODEL: Default  
FILE NAME: p:\build\paw\_benefly.com\PIV\DOT\Documents\DOT Office\Director\_4\Project\ID\_68H08\CADD\Drawings\Drawings\68H08-ctr-pln.dgn

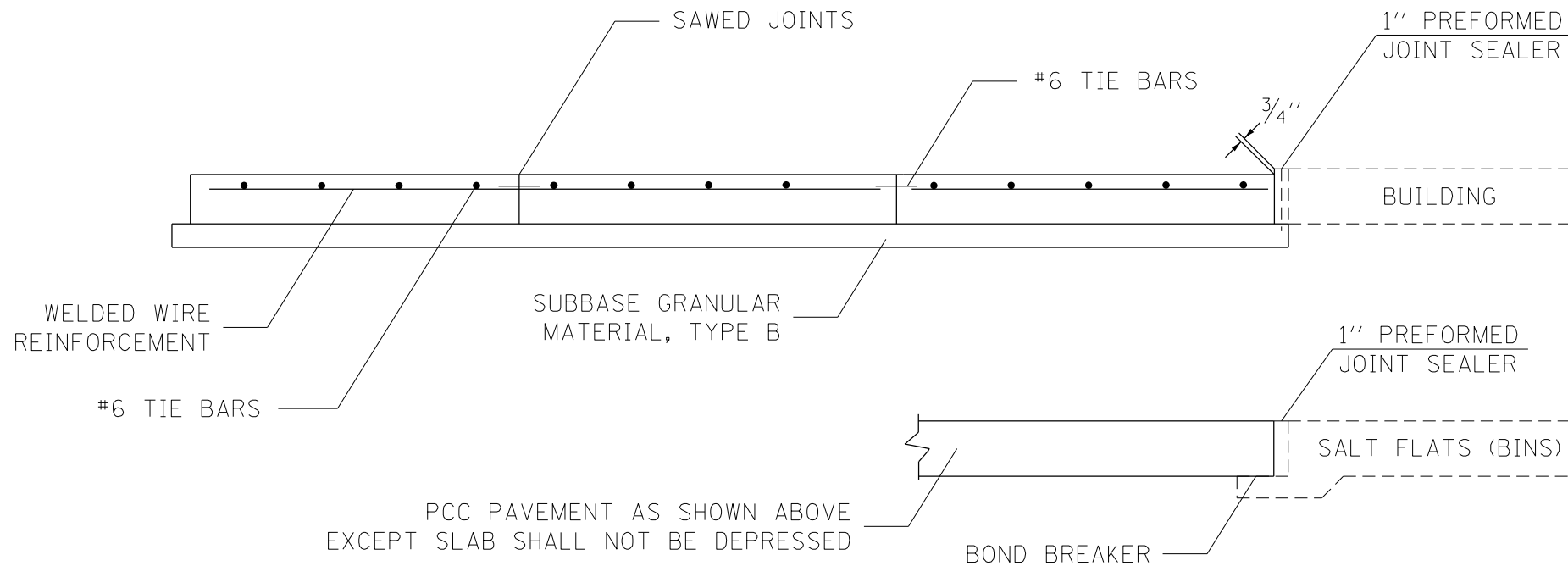
USER NAME = \$USERS	DESIGNED -	REVISED -
PLOT SCALE = 1:100	DRAWN -	REVISED -
PLOT DATE = 7/20/2022	CHECKED -	REVISED -
	DATE -	REVISED -

STATE OF ILLINOIS  
DEPARTMENT OF TRANSPORTATION

PROPOSED PLAN

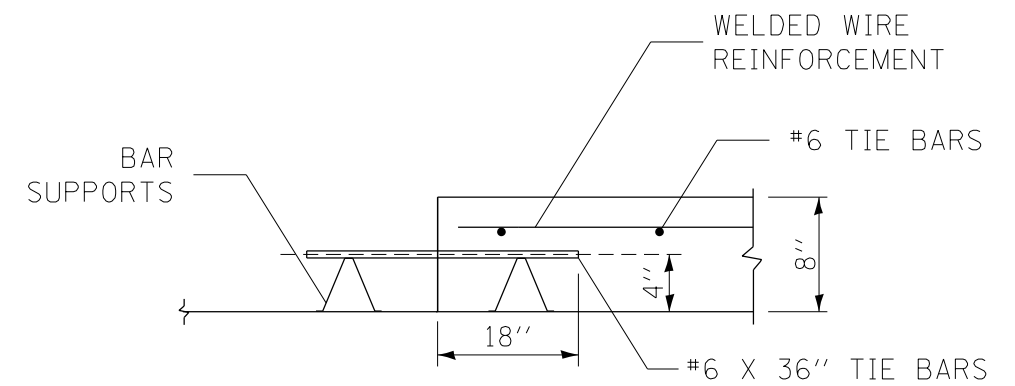
SCALE: SHEET 1 OF 1 SHEETS STA. TO STA.

F.A.P. RTE.	SECTION	COUNTY	TOTAL SHEETS	SHEET NO.
NA	D4 PARKING LOT RESURF	KNOX	17	5
CONTRACT NO. 68H08				
ILLINOIS FED. AID PROJECT				

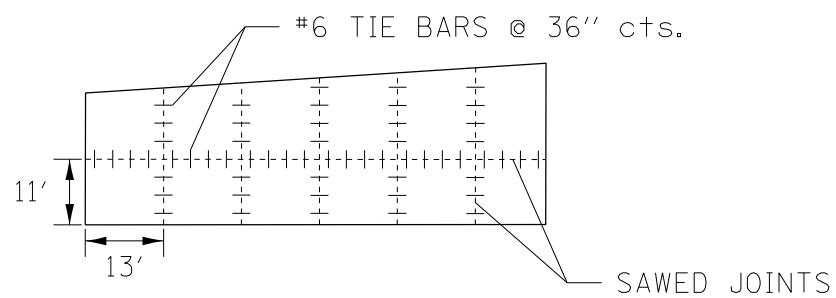


CROSS SECTION (TYP.)

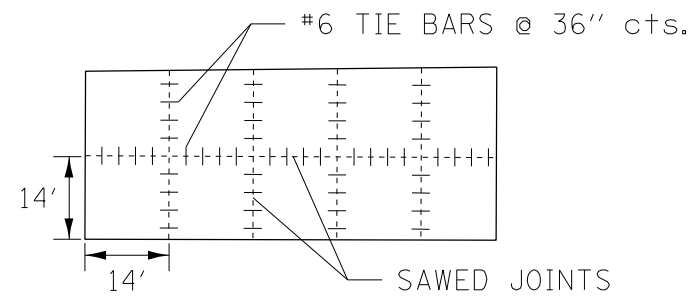
LOCATION 5



CONSTRUCTION JOINT



LOCATION 1



LOCATION 2

GENERAL NOTES

SAW CUTTING, TIE BARS AND PREFORMED JOINT SEALER WILL NOT BE MEASURED FOR PAYMENT BUT SHALL BE CONSIDERED INCLUDED IN THE UNIT PRICE BID FOR PCC PAVEMENT 8" (JOINTED).

TIE BARS SHALL NOT BE USED WHEN JOINTS ARE ADJACENT TO A BUILDING.

BOLLARDS SHALL BE WRAPPED AND SEALED WITH A 1/2" EXPANSION.

SEE STANDARD 420001 FOR DETAILS OF JOINTS NOT SHOWN.

SEE STANDARD 420701 FOR WELDED WIRE REINFORCEMENT DETAILS.

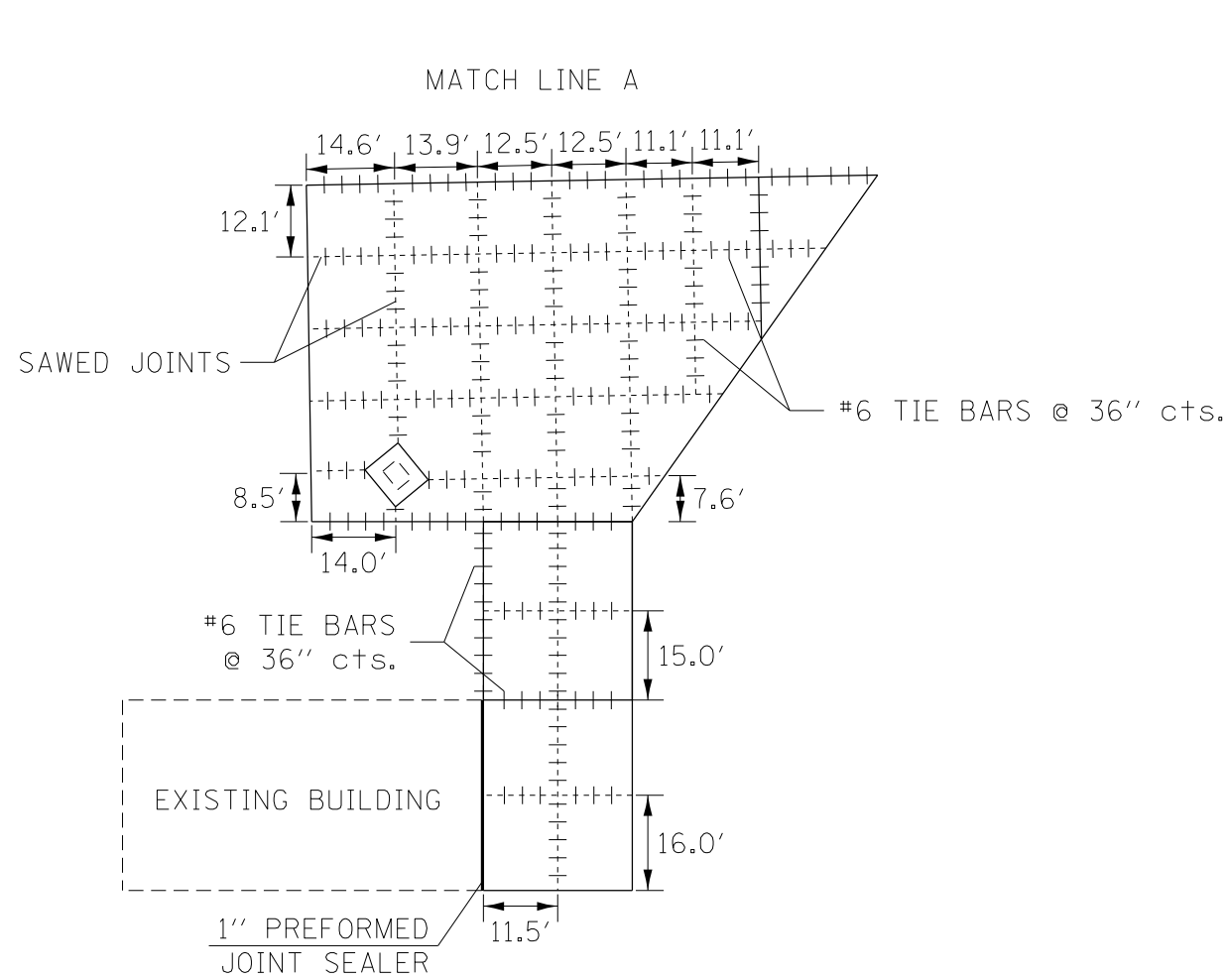
MODEL: Default  
 FILE NAME: p:\projects\68H08\CADD\Drawings\DOT\Drawings\Drawings\68H08-17r-Subs.dgn

USER NAME = \$USERS	DESIGNED -	REVISED -
	DRAWN -	REVISED -
PLOT SCALE = 1:100	CHECKED -	REVISED -
PLOT DATE = 7/20/2022	DATE -	REVISED -

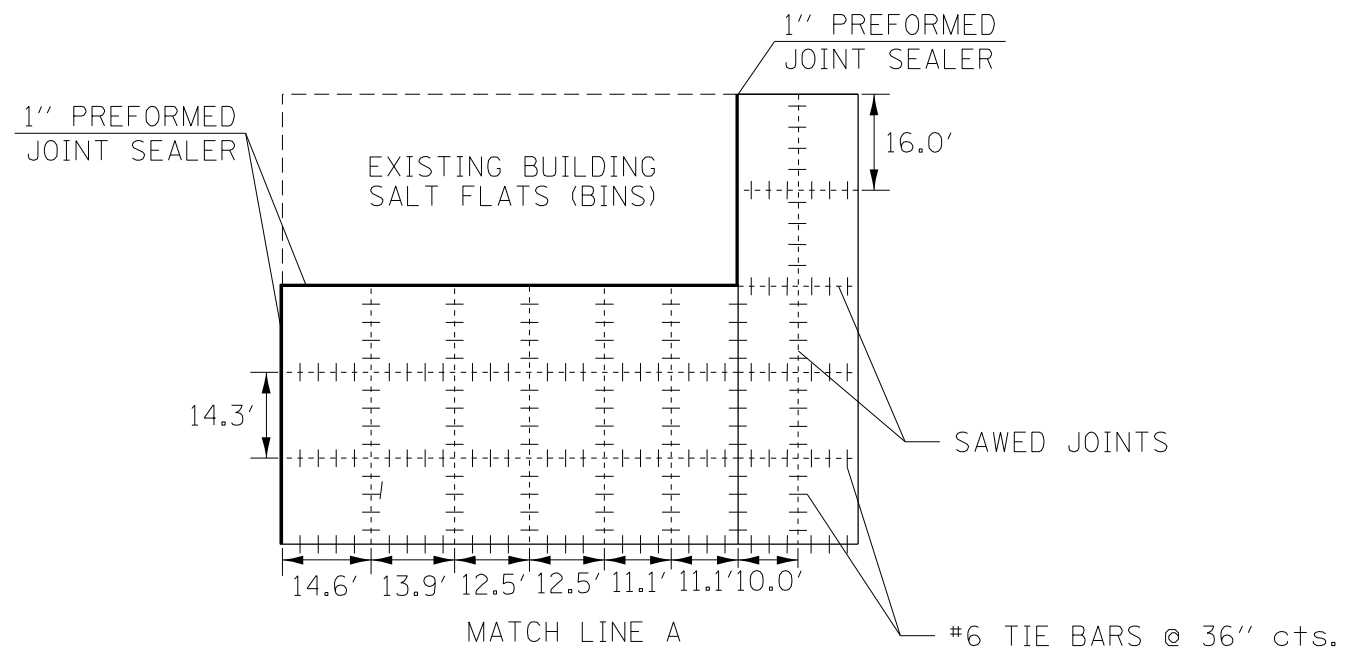
**STATE OF ILLINOIS  
DEPARTMENT OF TRANSPORTATION**

<b>PCC PAVEMENT DETAILS</b>			
SCALE:	SHEET 1	OF 2 SHEETS	STA. TO STA.

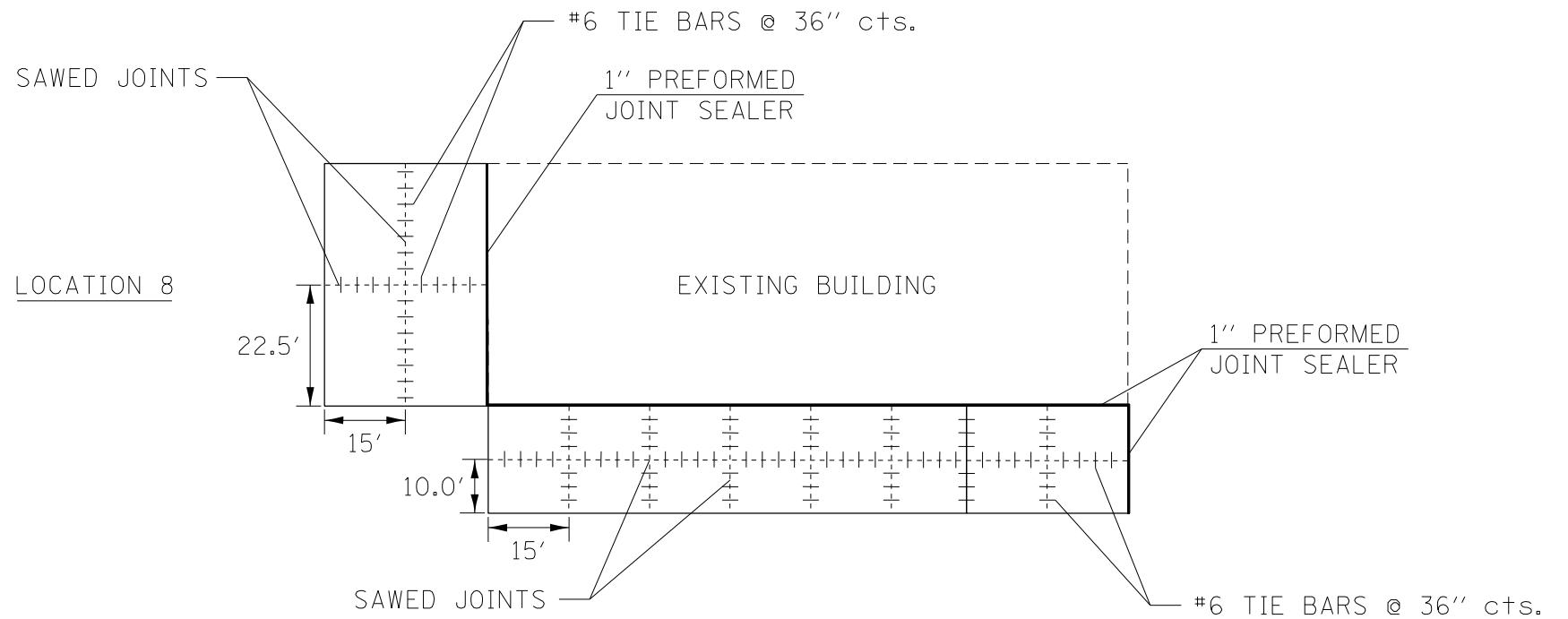
F.A.P. RTE.	SECTION	COUNTY	TOTAL SHEETS	SHEET NO.
NA	D4 PARKING LOT RESURF	KNOX	17	6
			CONTRACT NO. 68H08	
ILLINOIS FED. AID PROJECT				



LOCATION 3 AND 4



LOCATION 5



LOCATION 6

MODEL: Default  
 FILE: \\na11c-pw-bentley.com\P\W\DOT\Documents\1\DOT Office\Dir\ref. d\Project\1\4\_68H08\CADD\Draws\CAD\Sheets\1\468H08-11r-cslb.r.dgn

USER NAME = \$USERS	DESIGNED -	REVISED -
PLOT SCALE = 1:100	DRAWN -	REVISED -
PLOT DATE = 7/20/2022	CHECKED -	REVISED -
	DATE -	REVISED -

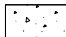

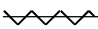
STATE OF ILLINOIS  
DEPARTMENT OF TRANSPORTATION

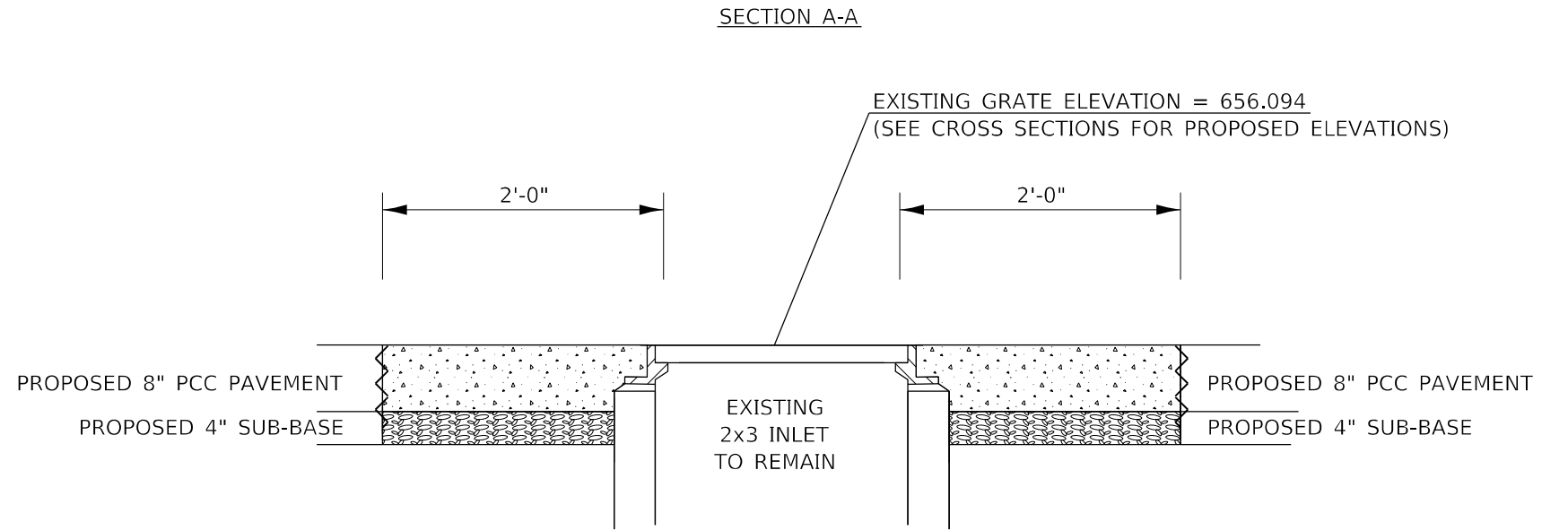
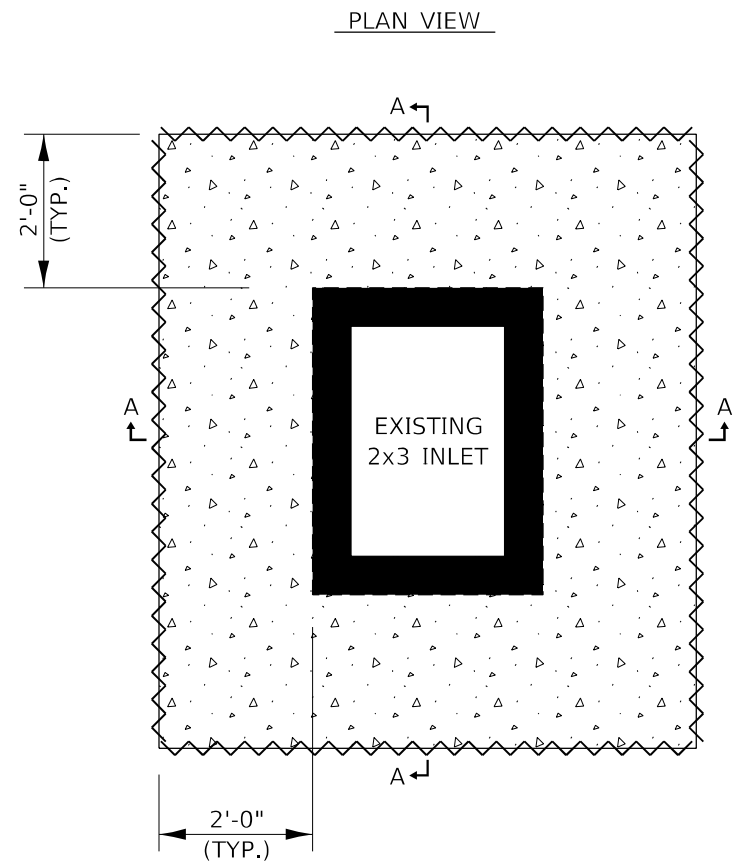
PCC PAVEMENT DETAILS

SCALE: SHEET 2 OF 2 SHEETS STA. TO STA.

F.A.P. RTE.	SECTION	COUNTY	TOTAL SHEETS	SHEET NO.
NA	D4 PARKING LOT RESURF	KNOX	17	7
			CONTRACT NO. 68H08	
		ILLINOIS FED. AID PROJECT		

**LEGEND**

 PCC APRON (8")  
 SUB-BASE (4")  
 PROPOSED SAW CUT & NEOPRENE EXPANSION JOINT 4"



- NOTES:**
1. REMOVAL SHALL INCLUDE FRAME, GRATE, ENTIRE EXISTING CONCRETE APRON, AND ANY ADDITIONAL PAVEMENT WITHIN THE LIMITS OF THE PROPOSED SAW CUTS. (FRAME AND GRATE SHALL BE STORED FOR RE-USE)
  2. PROPOSED GRATE ELEVATION SHALL BE APPROVED BY THE ENGINEER.
  3. ANY SUBBASE REPAIR NECESSARY SHALL BE TO THE SATISFACTION OF THE ENGINEER.
  4. THE PROPOSED PCC APRON SHALL INCLUDE WELDED WIRE REINFORCEMENT. SEE HIGHWAY STANDARD 420701 FOR WELDED WIRE REINFORCEMENT DETAILS.
  5. THE 4" NEOPRENE EXPANSION JOINT SHALL BE PLACED BETWEEN APRON AND PROPOSED PCC PAVEMENT.
  6. SEE SPECIAL PROVISION "CONCRETE APRON FOR INLET" FOR ADDITIONAL DETAILS.

DETAILS NOT DRAWN TO SCALE

MODEL: Default  
 FILE: \\na11e.pw.bentley.com\PW\DOT\Documents\DOT Offices\Director\_4\Project\104\_68H08\CADD\Draws\CAD\Sheets\10468H08-INT-Detail.dgn

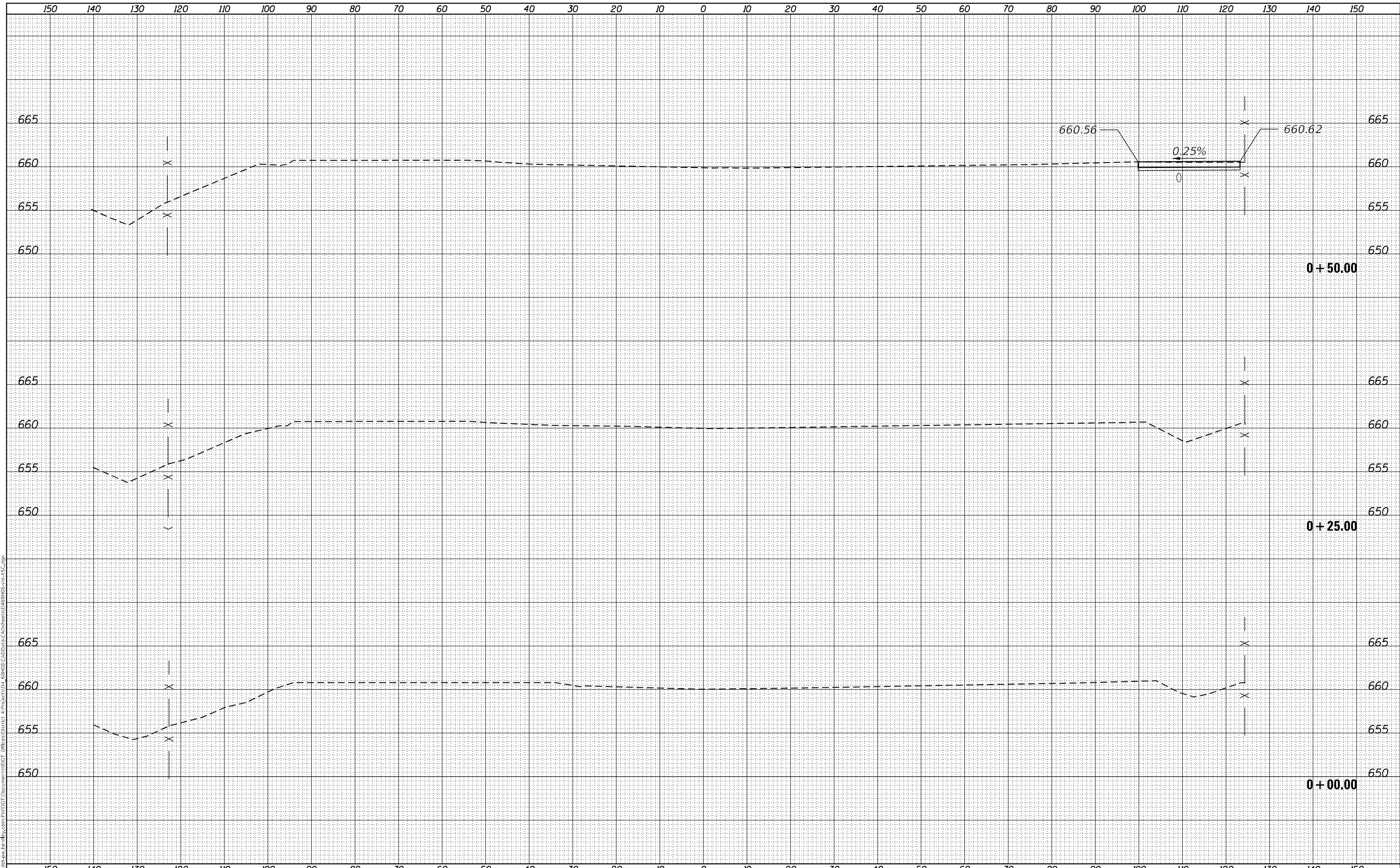
USER NAME = \$USERS PLOT SCALE = 1:100 PLOT DATE = 7/7/2022	DESIGNED - DRAWN - CHECKED - DATE -	REVISED - REVISED - REVISED - REVISED -	<b>STATE OF ILLINOIS DEPARTMENT OF TRANSPORTATION</b>	<b>LOCATION 4 INLET ADJUST DETAIL</b>	F.A. RTE. SECTION COUNTY TOTAL SHEETS SHEET NO.	NA D4 PARKING LOT RESURF KNOX 17 8	CONTRACT NO. 68H08 ILLINOIS FED. AID PROJECT
			SCALE:	SHEET 1 OF 1 SHEETS	STA.	TO STA.	



FINAL SURVEY	SURVEYED	DATE
NOTE BOOK	PLOTTED	
NO.	TEMPLATE	
	AREAS CHECKED	

ORIGINAL SURVEY	SURVEYED	DATE
NOTE BOOK	PLOTTED	
NO.	TEMPLATE	
	AREAS CHECKED	

MODEL: Defn\plr  
 FILE NAME: d:\work\pww\ben\by.com\pww\DOT Documents\DOT Office\Station\01 - 68H08\CAD\Draw\CAD\Sheets\Draw\H08-nc-XS.dwg



USER NAME = \$USERS	DESIGNED -	REVISED -
	DRAWN -	REVISED -
PLOT SCALE = 1:20	CHECKED -	REVISED -
PLOT DATE = 7/7/2022	DATE -	REVISED -

**STATE OF ILLINOIS  
DEPARTMENT OF TRANSPORTATION**

**CROSS-SECTIONS**

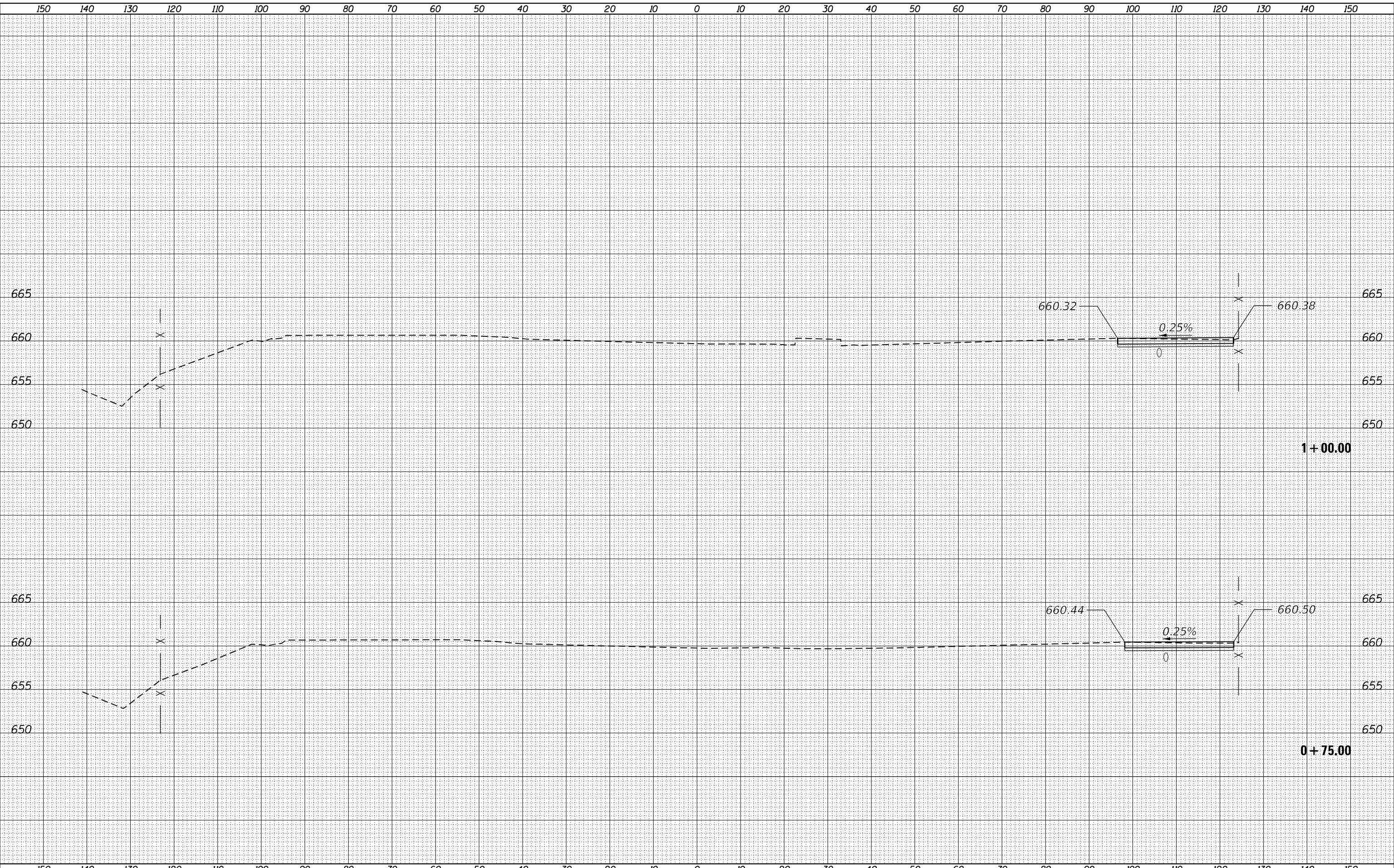
SCALE: SHEET 1 OF 9 SHEETS STA. +00.00 TO STA. +50.00

F.A.P. RTE.	SECTION	COUNTY	TOTAL SHEETS	SHEET NO.
NA	D4 PARKING LOT RESURF	KNOX	17	9
CONTRACT NO. 68H08				
ILLINOIS		FED. AID PROJECT		

FINAL SURVEY	SURVEYED	BY	DATE
NOTE BOOK NO.	PLOTTED		
	TEMPLATE		
	AREAS CHECKED		

ORIGINAL SURVEY	SURVEYED	BY	DATE
NOTE BOOK NO.	PLOTTED		
	TEMPLATE		
	AREAS CHECKED		

MODEL: Defn1.rvt  
FILE NAME: D:\work\pww\benby.com\pww\DOT Documents\DOT Office\center\_4\project\01\_68H08\CAD\plan\CAD\plans\08\08-nc-XS2.dwg



USER NAME = \$USERS	DESIGNED -	REVISED -
	DRAWN -	REVISED -
PLOT SCALE = 1:20	CHECKED -	REVISED -
PLOT DATE = 7/7/2022	DATE -	REVISED -

**STATE OF ILLINOIS  
DEPARTMENT OF TRANSPORTATION**

**CROSS-SECTIONS**

SCALE: SHEET 2 OF 9 SHEETS STA. +75.00 TO STA. 1+00.00

F.A.P. RTE.	SECTION	COUNTY	TOTAL SHEETS	SHEET NO.
NA	D4 PARKING LOT RESURF	KNOX	17	10
CONTRACT NO. 68H08				
ILLINOIS FED. AID PROJECT				

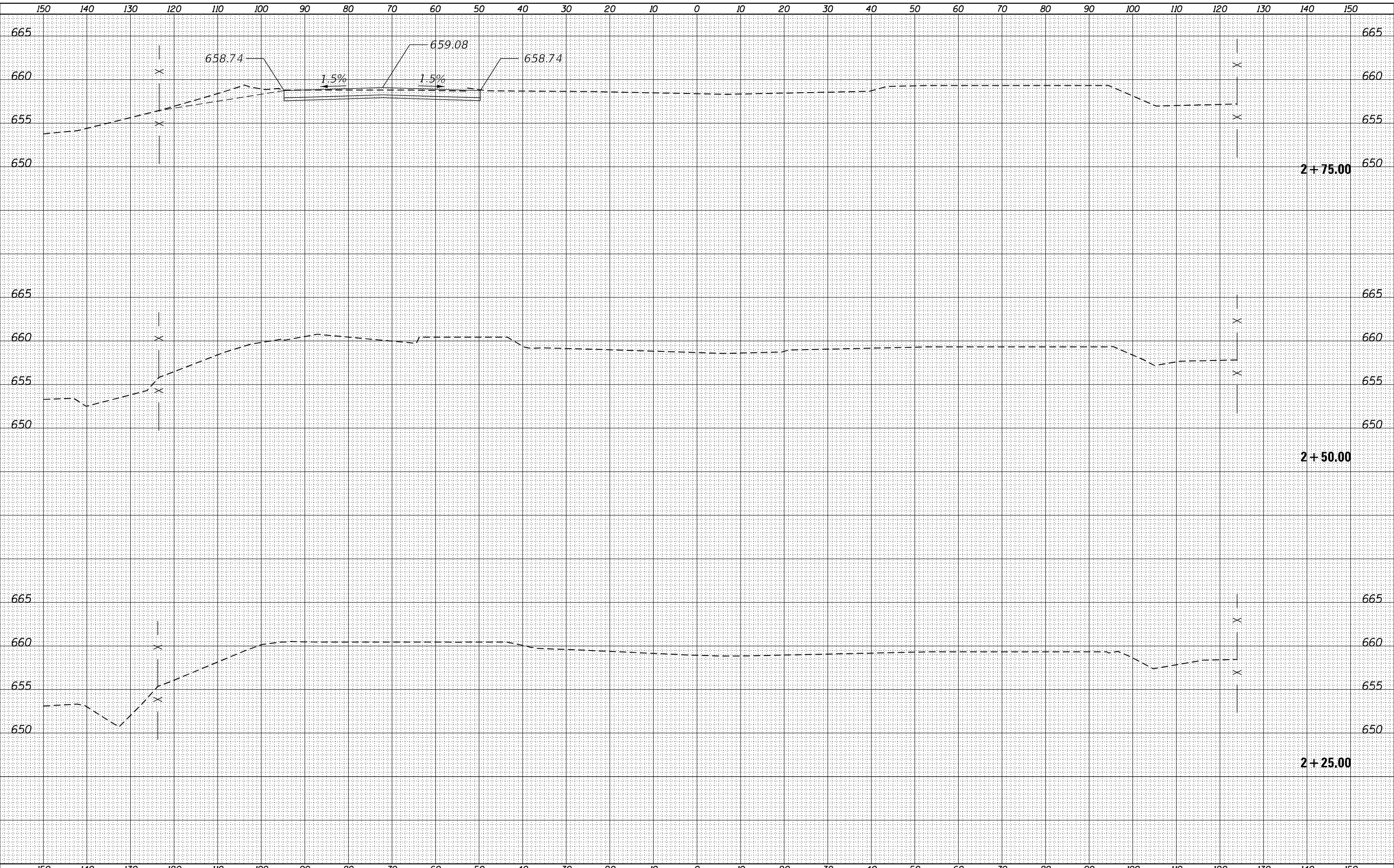




FINAL SURVEY	SURVEYED	DATE
NOTE BOOK	PLOTTED	BY
NO.	TEMPLATE	
	AREAS CHECKED	

ORIGINAL SURVEY	SURVEYED	DATE
NOTE BOOK	PLOTTED	BY
NO.	TEMPLATE	
	AREAS CHECKED	

MODEL: Definit  
 FILE NAME: j:\work\pww\benby.com\pww\DOT Documents\DOT Office\center\_4\project\DL\_68H08\CAD\plan\CAD\plans\2+50\2+50-XS.dwg



USER NAME = \$USERS	DESIGNED -	REVISED -
	DRAWN -	REVISED -
PLOT SCALE = 1:20	CHECKED -	REVISED -
PLOT DATE = 7/7/2022	DATE -	REVISED -

**STATE OF ILLINOIS  
 DEPARTMENT OF TRANSPORTATION**

**CROSS-SECTIONS**

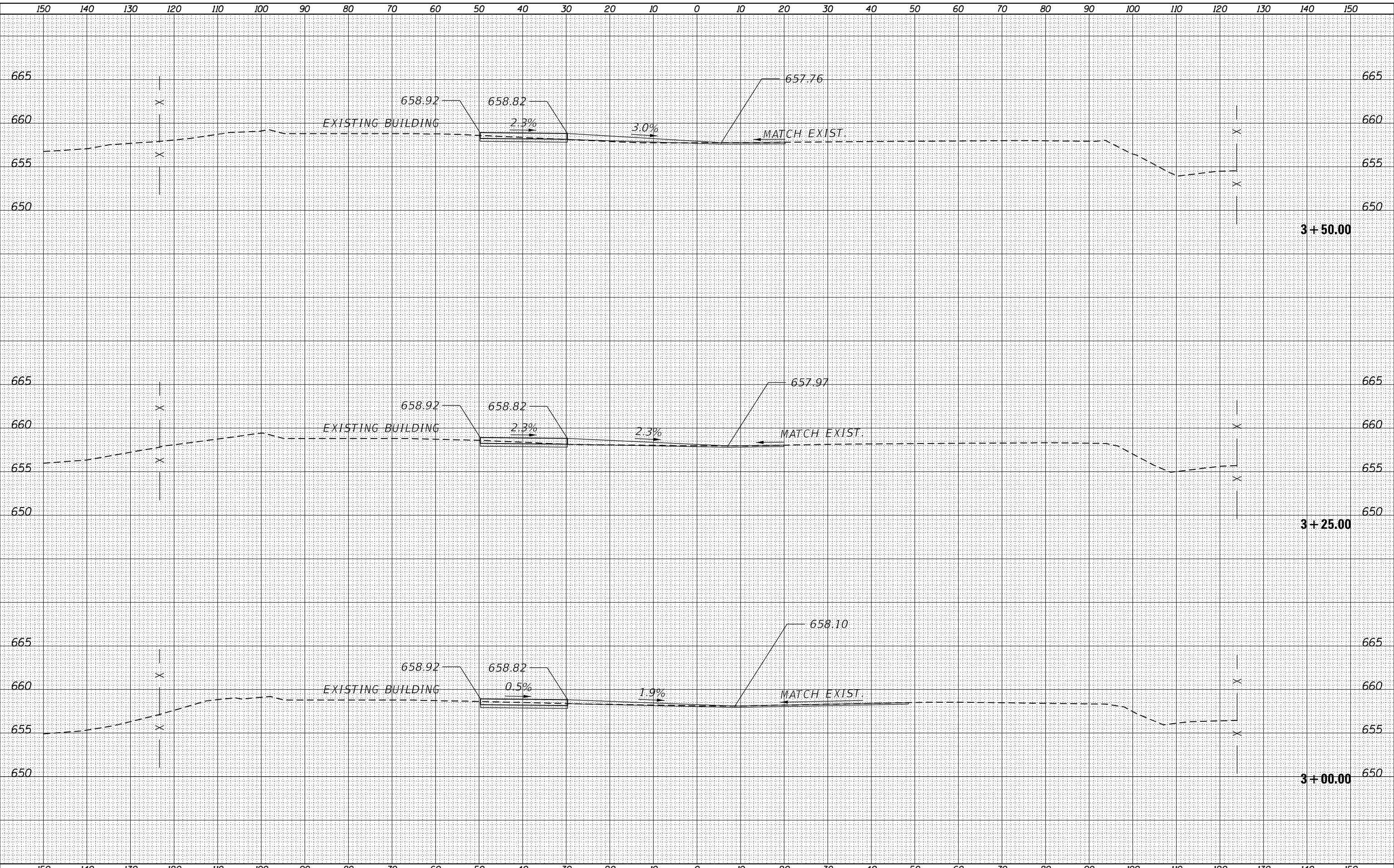
SCALE: SHEET 5 OF 9 SHEETS STA. 2+25.00 TO STA. 2+75.00

F.A.P. RTE.	SECTION	COUNTY	TOTAL SHEETS	SHEET NO.
NA	D4 PARKING LOT RESURF	KNOX	17	13
				CONTRACT NO. 68H08
		ILLINOIS	FED. AID PROJECT	

DATE	
BY	
SURVEYED	
PLOTTED	
TEMPLATE	
AREAS CHECKED	
FINAL SURVEY	
NOTE BOOK	
NO.	
AREAS CHECKED	

DATE	
BY	
SURVEYED	
PLOTTED	
TEMPLATE	
AREAS CHECKED	
ORIGINAL SURVEY	
NOTE BOOK	
NO.	
AREAS CHECKED	

MODEL: Default  
FILE NAME: D:\Illinois\pww\benley.com\pww\DOT Documents\100T\Documents\100T\Drawings\100T\Drawings\CAD\Drawings\CAD\Drawings\100T\100T-XS.dwg



USER NAME = SUsers	DESIGNED -	REVISED -
DESIGNED -	DRAWN -	REVISED -
PLLOT SCALE = 1:20	CHECKED -	REVISED -
PLLOT DATE = 7/7/2022	DATE -	REVISED -

**STATE OF ILLINOIS  
DEPARTMENT OF TRANSPORTATION**

**CROSS-SECTIONS**

SCALE: SHEET 6 OF 9 SHEETS STA. 3+00.00 TO STA. 3+50.00

F.A.P. RTE.	SECTION	COUNTY	TOTAL SHEETS	SHEET NO.
NA	D4 PARKING LOT RESURF	KNOX	17	14
				CONTRACT NO. 68H08
		ILLINOIS	FED. AID PROJECT	



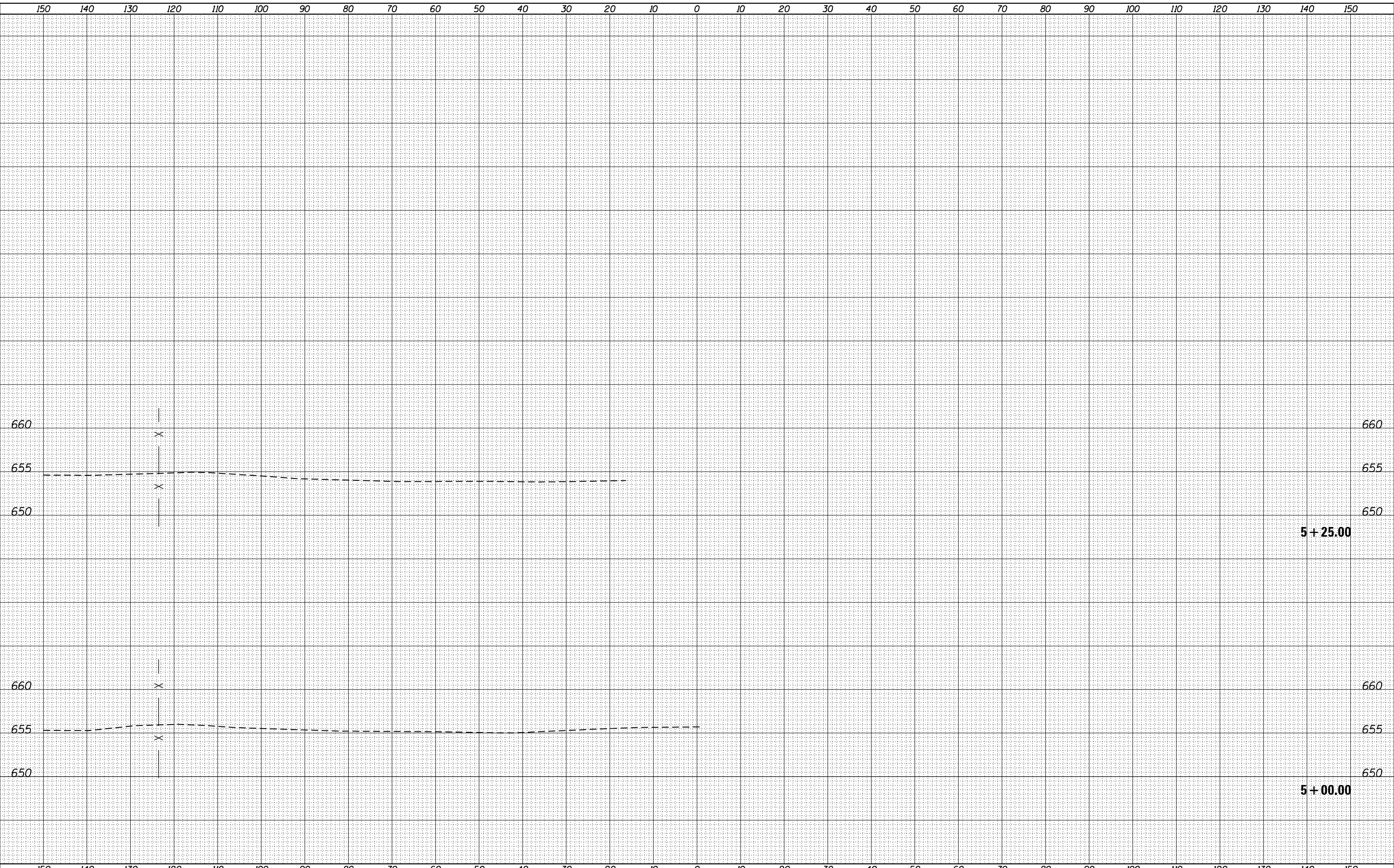




FINAL SURVEY	SURVEYED	BY	DATE
NOTE BOOK NO.	PLOTTED		
	TEMPLATE		
	AREAS CHECKED		

ORIGINAL SURVEY	SURVEYED	BY	DATE
NOTE BOOK NO.	PLOTTED		
	TEMPLATE		
	AREAS CHECKED		

MODEL: Definit  
 FILE NAME: D:\Illinois\pww\benby.com\PIV\DOT Documents\DOT Office\Printer\_4\Project\DL\_68H08\CAD\Drawn\CAD\Sheets\Drawn\68H08-nc-XS.dwg



USER NAME = \$USERS	DESIGNED -	REVISED -
	DRAWN -	REVISED -
PLOT SCALE = 1:20	CHECKED -	REVISED -
PLOT DATE = 7/7/2022	DATE -	REVISED -

**STATE OF ILLINOIS  
 DEPARTMENT OF TRANSPORTATION**

**CROSS-SECTIONS**

SCALE: SHEET 9 OF 9 SHEETS STA. 5+00.00 TO STA. 5+25.00

F.A.P. RTE.	SECTION	COUNTY	TOTAL SHEETS	SHEET NO.
NA	D4 PARKING LOT RESURF	KNOX	17	17
CONTRACT NO. 68H08				
ILLINOIS FED. AID PROJECT				