

STATE OF ILLINOIS
DEPARTMENT OF TRANSPORTATION

| F.A.I. RTE. | SECTION | COUNTY | TOTAL SHEETS | SHEET NO. |
|-------------|----------|-----------|--------------------|-----------|
| 74 | (10-7)BR | CHAMPAIGN | 20 | 1 |
| | | ILLINOIS | CONTRACT NO. 70G16 | |

FOR INDEX OF SHEETS, SEE SHEET NO. 2
FOR SUMMARY OF QUANTITIES SEE SHEET NO. 3

PROPOSED HIGHWAY PLANS

FAI ROUTE 74 (I-74)
SECTION (10-7)BR
BRIDGE REMOVAL / DEMOLITION
CHAMPAIGN COUNTY

TRAFFIC DATA

SN 010-0180 over FAI-74 and carrying TR 258

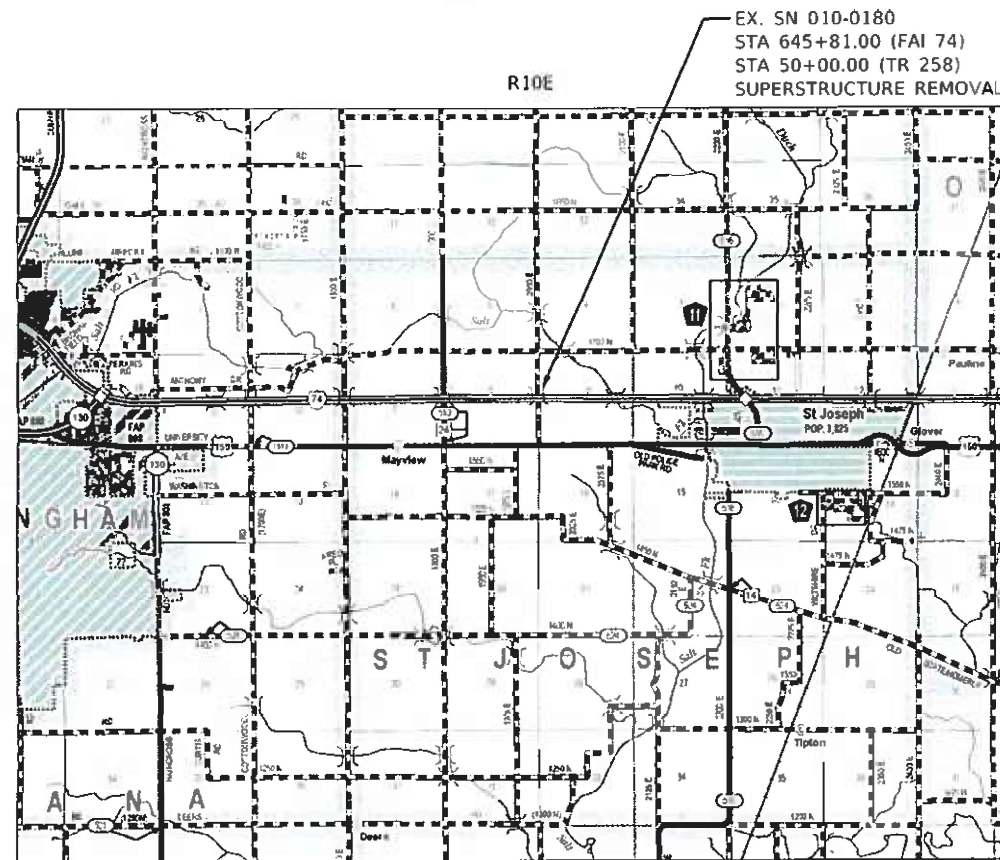
| | Leg "A" | Leg "B" |
|------------|---------|---------|
| 2022 ADT = | 28,700 | 75 |
| PV % = | 72.10% | |
| SU % = | 3.20% | |
| MU % = | 24.70% | |

FUNCTIONAL CLASSIFICATION

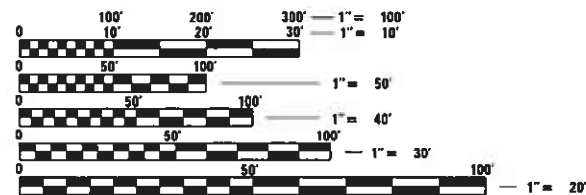
Interstate Local

Leg "A" is I-74 under SN 010-0180
Leg "B" is TR 258 over SN 010-0180

C-95-059-22
AT TR258 2 MILES WEST OF ST. JOSEPH



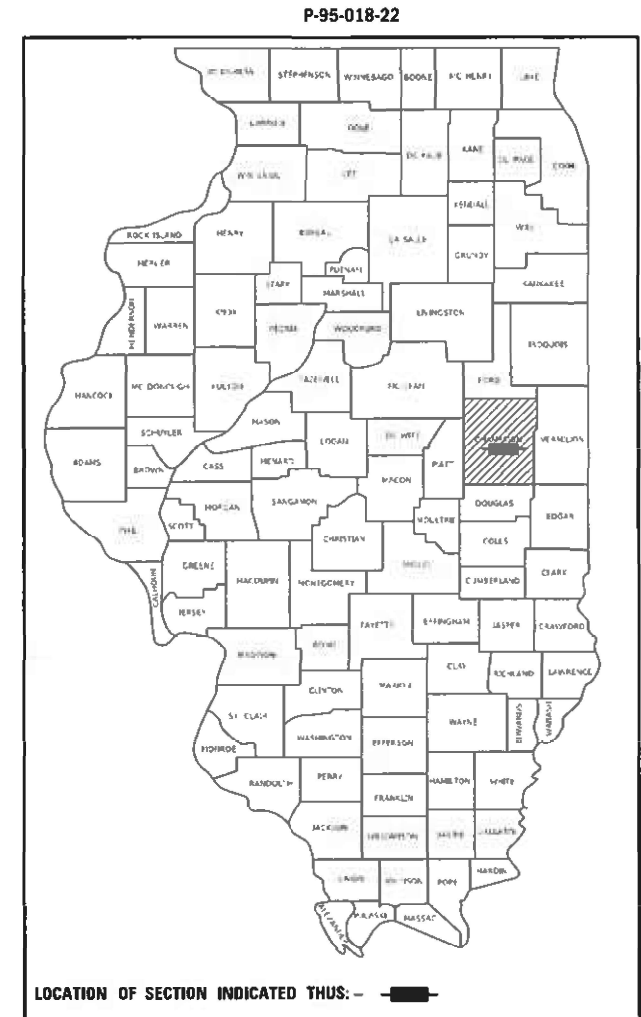
GROSS LENGTH = 32 FT. = 0.006 MILE
NET LENGTH = 32 FT. = 0.006 MILE



FULL SIZE PLANS HAVE BEEN PREPARED USING STANDARD ENGINEERING SCALES. REDUCED SIZED PLANS WILL NOT CONFORM TO STANDARD SCALES. IN MAKING MEASUREMENTS ON REDUCED PLANS, THE ABOVE SCALES MAY BE USED.

J.U.L.I.E.
JOINT UTILITY LOCATION INFORMATION FOR EXCAVATORS
1-800-892-0123 OR 811
ST. JOSEPH TOWNSHIP

PROJECT ENGINEER: RYAN CARROLL
SQUAD LEADER: SAMUEL MEGLI
DESIGNER: ERIC HOY
PHONE NUMBER: 217-465-4181
CONTRACT NO. 70G16



STATE OF ILLINOIS
DEPARTMENT OF TRANSPORTATION

SUBMITTED 6/29 2022
Kensala Barnett swm
REGIONAL ENGINEER

August 19, 2022
S. E. A. Etk
ENGINEER OF DESIGN AND ENVIRONMENT

August 19, 2022
Stephen McNeill
DIRECTOR OF HIGHWAYS PROJECT IMPLEMENTATION

PRINTED BY THE AUTHORITY
OF THE STATE OF ILLINOIS

INDEX OF SHEETS

| <u>DESCRIPTION</u> | <u>SHEET NO.</u> |
|--|------------------|
| COVER | 1 |
| INDEX OF SHEETS, GENERAL NOTES, LIST OF STANDARDS & COMMITMENTS | 2 |
| SUMMARY OF QUANTITIES | 3 |
| EXISTING TYPICAL SECTIONS | 4 |
| PLAN SHEET | 5 |
| TRAFFIC CONTROL AND PROTECTION | 6 to 7 |
| GENERAL PLANS & ELEVATION S.N. 010-0180 | 8 |
| GENERAL NOTES AND BILL OF MATERIAL S.N. 010-0180 | 9 |
| S.N. 010-0180 EXISTING STRUCTURE PLANS | 10 to 17 |
| D5 DETAIL 70103710 TRAFFIC CONTROL FOR RAMPS (PARTIAL AND FULL CLOSURES) | 18 |
| D5 DETAIL 70200000 TRAFFIC CONTROL AND PROTECTION DEVICES (ROAD AND SIDEROAD/STREET CLOSURES) | 19 |
| D5 DETAIL X7011005 TRAFFIC CONTROL AND PROTECTION FOR TEMPORARY DETOUR (UTILIZING ENTRANCE AND EXIT RAMPS) | 20 |

LIST OF STANDARDS

| <u>STANDARD NO.</u> | <u>DESCRIPTION</u> |
|---------------------|--|
| 000001-08 | STANDARD SYMBOLS, ABBREVIATIONS AND PATTERNS |
| 001006 | DECIMAL OF AN INCH AND OF A FOOT |
| 701400-11 | APPROACH TO LANE CLOSURE, FREEWAY/EXPRESSWAY |
| 701401-13 | LANE CLOSURE, FREEWAY/EXPRESSWAY |
| 701428-01 | TRAFFIC CONTROL, SETUP AND REMOVAL, FREEWAY/EXPRESSWAY |
| 701451-05 | RAMP CLOSURE FREEWAY/EXPRESSWAY |
| 701901-08 | TRAFFIC CONTROL DEVICES |
| 720001-01 | SIGN PANEL MOUNTING DETAILS |
| 720006-04 | SIGN PANEL ERECTION DETAILS |
| 720011-01 | METAL POSTS FOR SIGNS, MARKERS AND DELINEATORS |

GENERAL NOTES

G.N.-100A
ELECTRONIC FILES AND/OR ELECTRONIC SURVEY INFORMATION INCLUDING CADD FILES WILL NOT BE AVAILABLE TO THE CONTRACTOR.

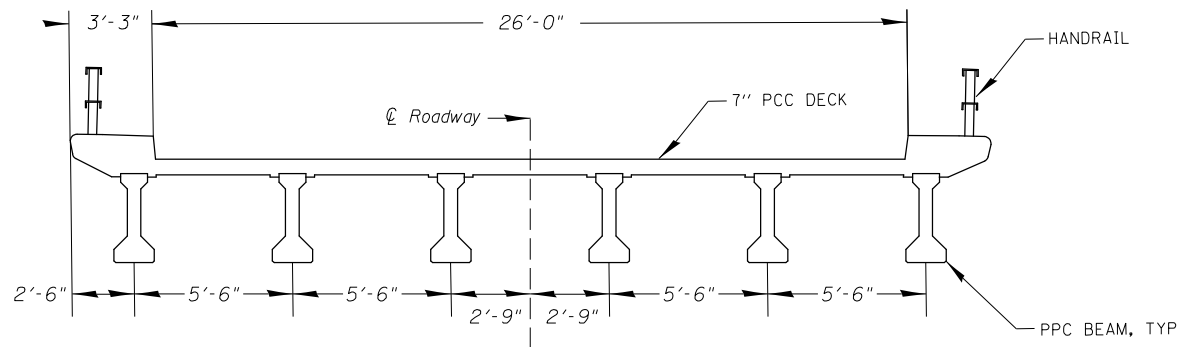
G.N.-105.09A
ALL ELEVATIONS SHOWN IN THE PLANS ARE BASED ON NORTH AMERICAN VERTICAL DATUM OF 1988. (NAVD 88)

COMMITMENTS

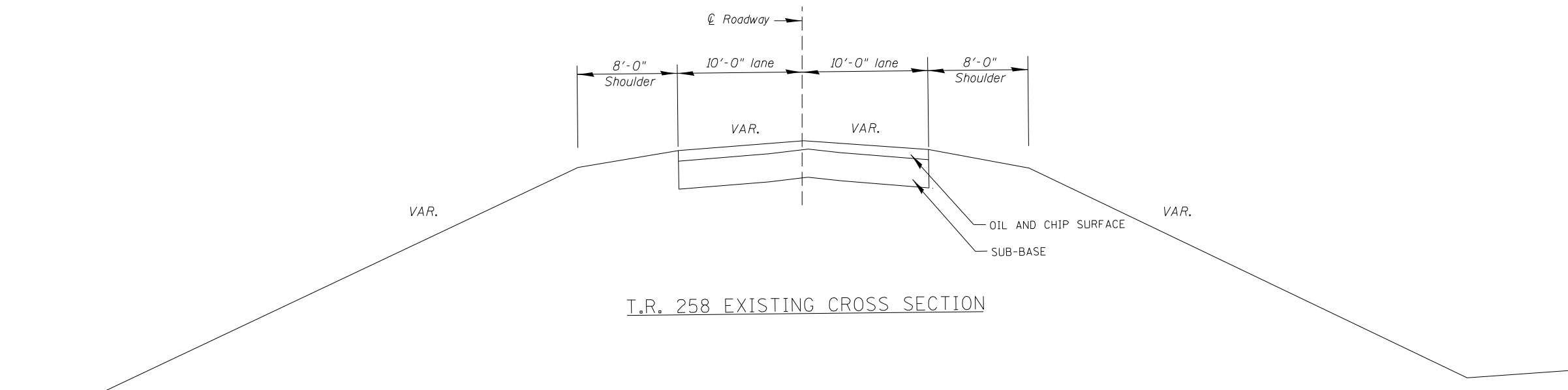
THERE ARE NO COMMITMENTS FOR THIS CONTRACT

MODEL: I:\MODEL\MNMF
 FILE: MNMF.dwg
 PLOT DATE: 6/28/2022
 USER: Leslie.Hoy
 PLOT SCALE: 40,0000 * / in.
 PLOT DATE: 6/28/2022

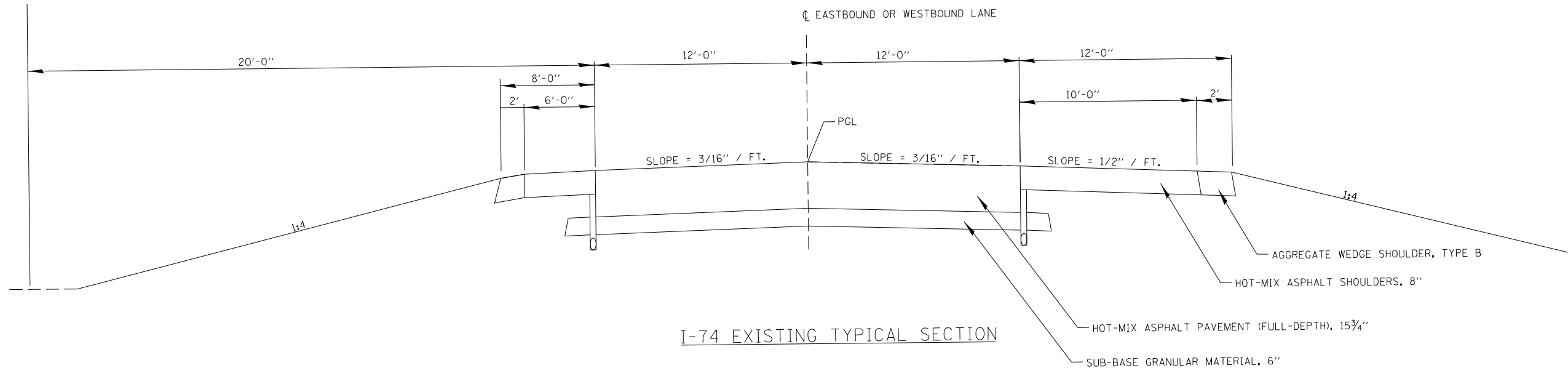
| | | | | | | | | |
|--|--|---|---|----------------------|---------------------|---------------------------|-----------------------|-------------------|
| USER NAME = Leslie.Hoy DESIGNED - DRAWN - CHECKED - DATE - | REVISED - REVISED - REVISED - REVISED - | STATE OF ILLINOIS DEPARTMENT OF TRANSPORTATION | INDEX OF SHEETS, GENERAL NOTES, LIST OF STANDARDS, AND COMMITMENTS | F.A.I. RTE. 74 | SECTION (10-7)BR | COUNTY CHAMPAIGN | TOTAL SHEETS 20 | SHEET NO. 2 |
| SCALE: N/A | | | SHEET 1 OF 1 SHEETS | STA. TO STA. | | ILLINOIS FED. AID PROJECT | | |



SPAN CROSS SECTION



T.R. 258 EXISTING CROSS SECTION



I-74 EXISTING TYPICAL SECTION

MODEL: I:\MODEL\MMFIS
 FILE: MMFIS_Plan\I-74\I-74.dwg
 PROJECT: I:\PROJECTS\70G\70G\CAD\DATA\CAD\Sheets\70G16\I-74-TYPICAL.dwg

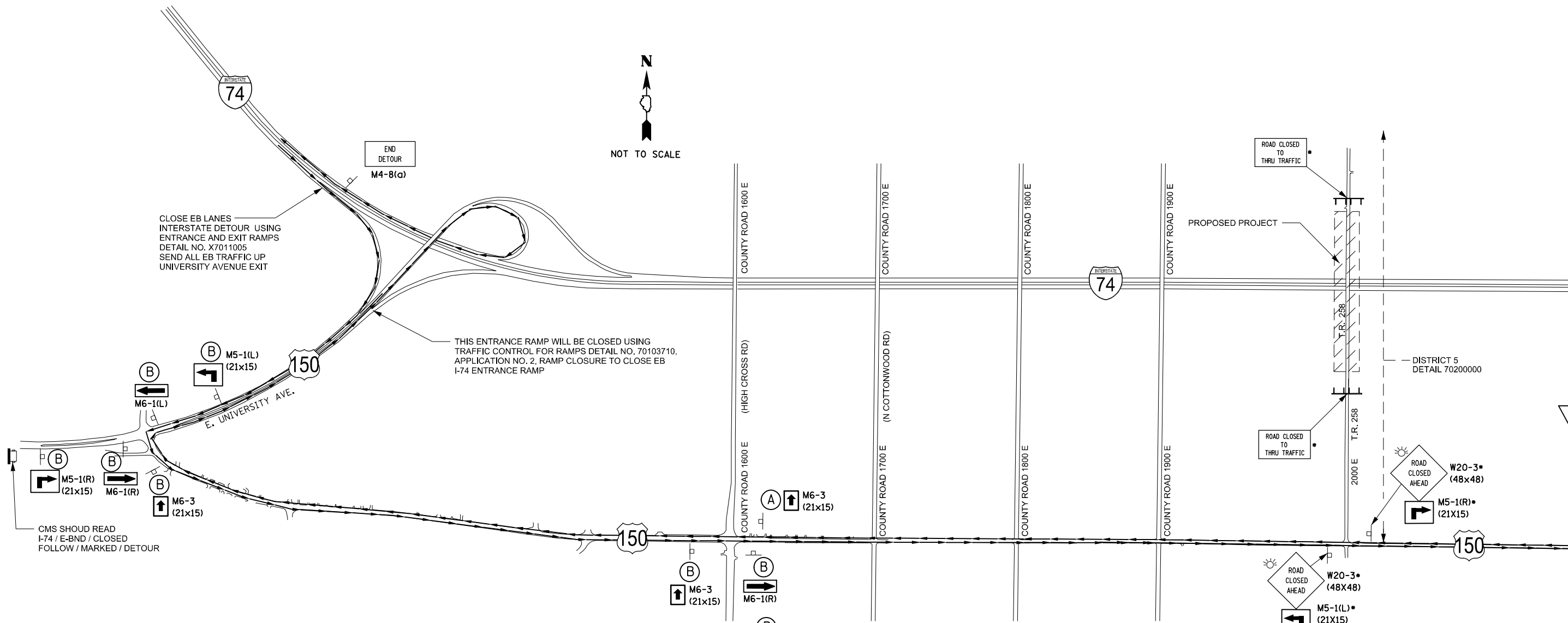
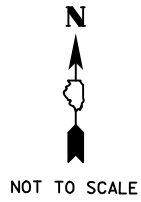
| | | |
|------------------------------|------------|-----------|
| USER NAME = Leslie.Hoy | DESIGNED - | REVISED - |
| | DRAWN - | REVISED - |
| PLOT SCALE = 40,0000 * / in. | CHECKED - | REVISED - |
| PLOT DATE = 6/28/2022 | DATE - | REVISED - |

**STATE OF ILLINOIS
DEPARTMENT OF TRANSPORTATION**

EXISTING TYPICAL SECTIONS

SCALE: N/A SHEET 1 OF 1 SHEETS STA. TO STA.

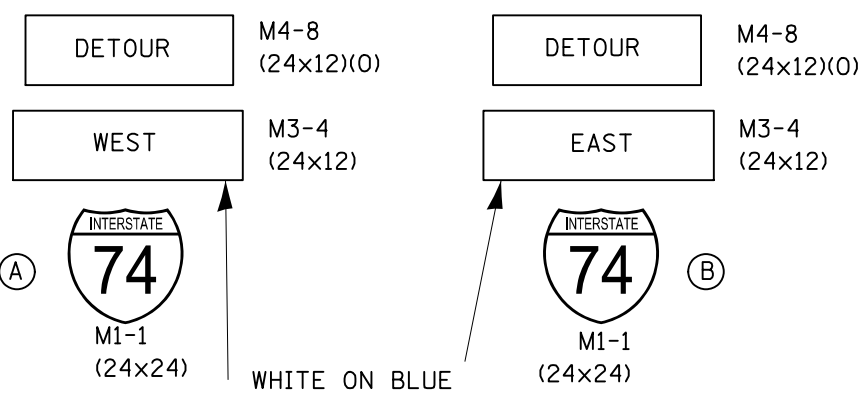
| F.A.I. RTE. | SECTION | COUNTY | TOTAL SHEETS | SHEET NO. |
|---------------------------|----------|-----------|--------------|-----------|
| 74 | (10-7)BR | CHAMPAIGN | 20 | 4 |
| CONTRACT NO. 70G16 | | | | |
| ILLINOIS FED. AID PROJECT | | | | |



CLOSE EB LANES INTERSTATE DETOUR USING ENTRANCE AND EXIT RAMP'S DETAIL NO. X7011005 SEND ALL EB TRAFFIC UP UNIVERSITY AVENUE EXIT

THIS ENTRANCE RAMP WILL BE CLOSED USING TRAFFIC CONTROL FOR RAMP'S DETAIL NO. 70103710, APPLICATION NO. 2, RAMP CLOSURE TO CLOSE EB I-74 ENTRANCE RAMP

CMS SHOULD READ I-74 / E-BND / CLOSED FOLLOW / MARKED / DETOUR



ALL ARROW SIGNS SHALL BE BLACK ON ORANGE (21x15)

GENERAL NOTES:

- TR 259 IS CURRENTLY CLOSED, WILL BE CLOSED DURING REMOVAL AND WILL REMAIN CLOSED FOLLOWING REMOVAL OF THE SUPERSTRUCTURE.
- I-74 WILL REMAIN OPEN DURING THE DAYTIME WITH ONLY NIGHTTIME LANE CLOSURES ALLOWED.
- I-74 TRAFFIC WILL BE DETOURED TO US 150 DURING BEAM REMOVAL. THE REMOVAL OF BRIDGE BEAMS WILL BE DONE AT NIGHT AS DISCUSSED IN THE SPECIAL PROVISIONS.
- CHANGEABLE MESSAGE SIGNS SHALL BE PLACED AT POINTS LOCATED 2-3 MILES AHEAD, OR AS APPROVED BY THE ENGINEER, OF PROPOSED ROAD CLOSURE AREA ALONG I-74 AND UNIVERSITY AVENUE.
- CONTACT DISTRICT TRAFFIC AND OPERATION ENGINEER AT 217-465-4181 ONE WEEK PRIOR TO IMPLEMENTING THE DETOUR.
- ALL EXISTING ROAD CLOSED AHEAD AND BARRICADE AHEAD SIGNS AND TYPE III BARRICADES BELONG TO CHAMPAIGN SIGN SHOP AND CHAMPAIGN MAINTENANCE TEAM SECTION.
- CONTRACTOR SHALL CONTACT RON MAULDING AT 217-466-7290 WITH TWO WEEKS PRIOR NOTICE FOR THE I-74 SHIELDS TO BE AVAILABLE FOR PICKUP AT THE CHAMPAIGN SIGN SHOP.

- TYPE III BARRICADE
- FLASHING AMBER LIGHT (TYPE A)
- CHANGEABLE MESSAGE SIGN
- SIGN IS CURRENTLY IN PLACE AND CAN REMAIN IN PLACE DURING AND AFTER THIS CONTRACT.

MODEL: \\MODEL\MAME FILE: MAME: P:\Public\paw_bentley.com\PIV\DOT\Documents\DOT Office\District 5\Project\70G16\CADD\DATA\CAD\Sheet\70G16-FH-detour.dgn

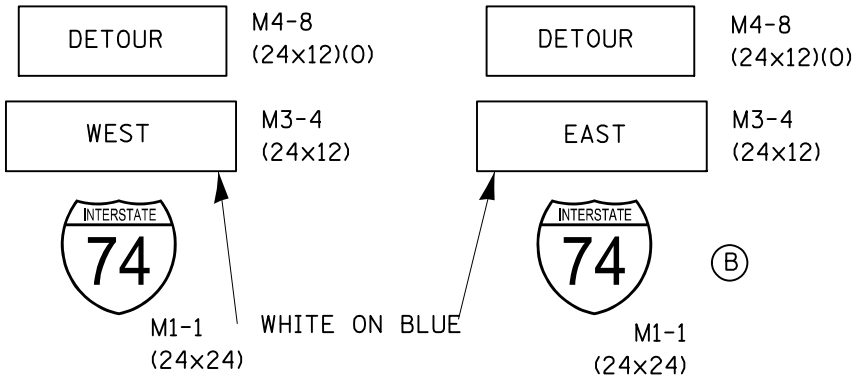
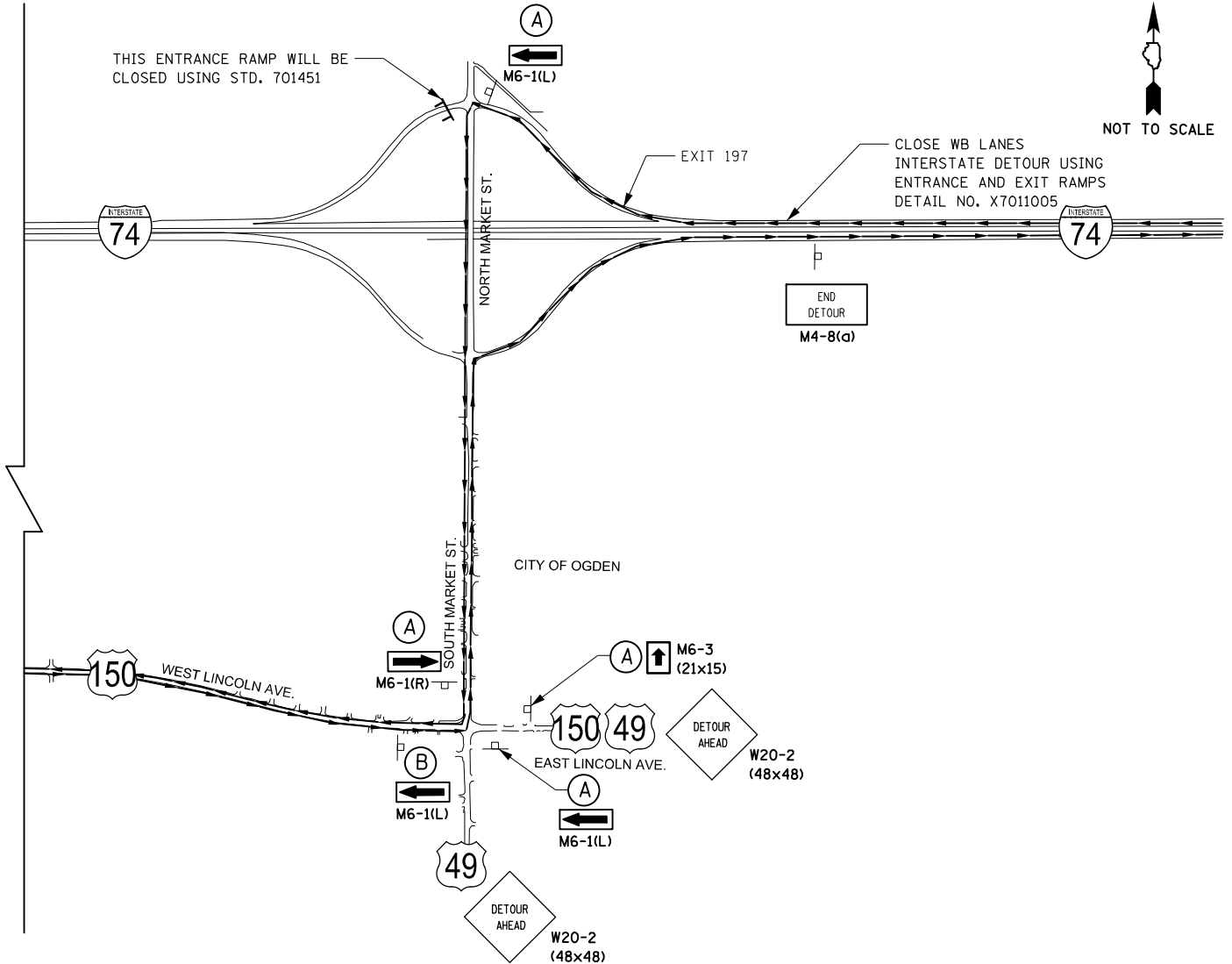
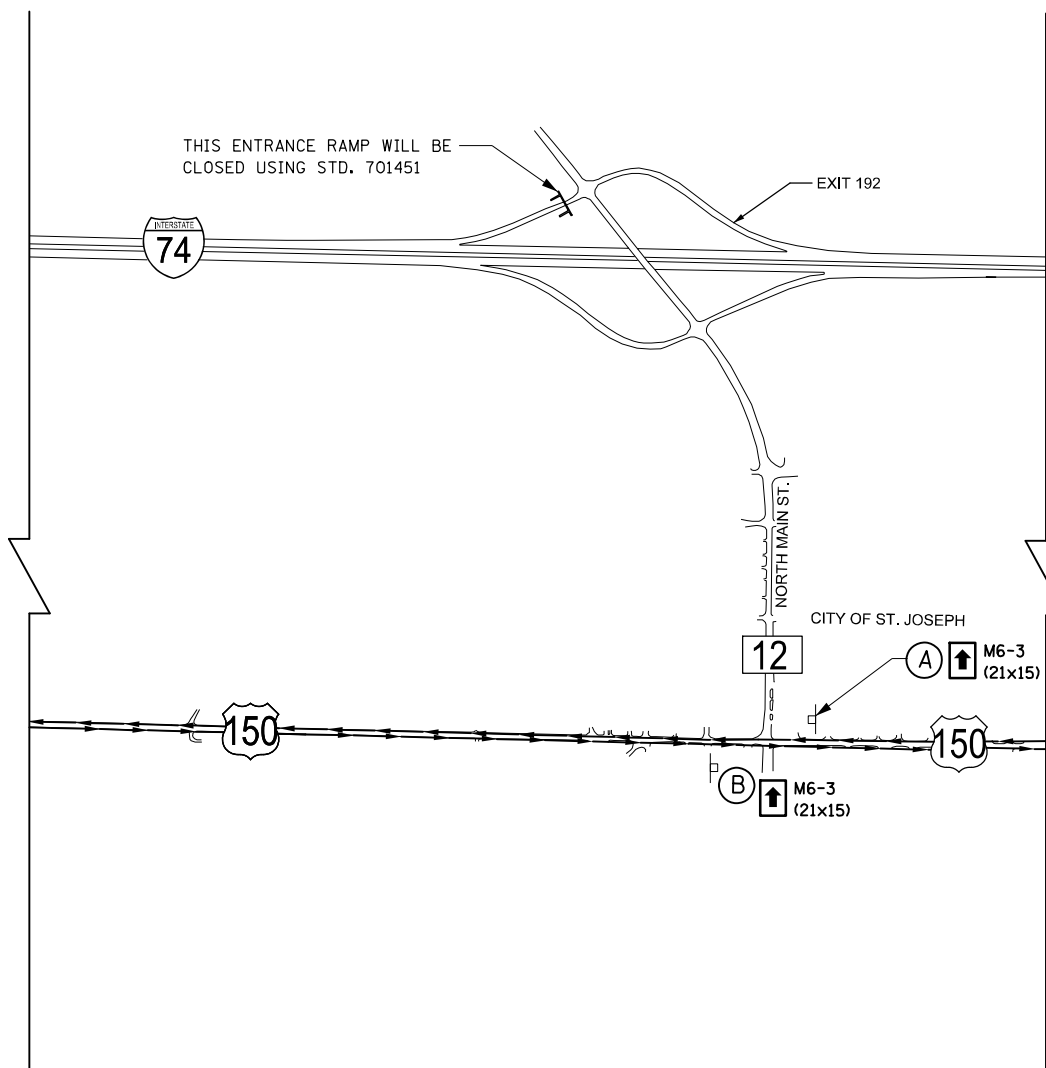
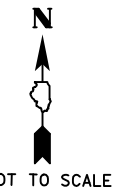
| | | |
|-----------------------------|------------|-----------|
| USER NAME = Leslie.Hoy | DESIGNED - | REVISED - |
| | DRAWN - | REVISED - |
| PLOT SCALE = 40,0000' / in. | CHECKED - | REVISED - |
| PLOT DATE = 6/28/2022 | DATE - | REVISED - |

**STATE OF ILLINOIS
DEPARTMENT OF TRANSPORTATION**

**TRAFFIC CONTROL AND PROTECTION
(TEMPORARY DETOUR)**

SCALE: N/A SHEET 1 OF 2 SHEETS STA. TO STA.

| | | | | |
|---------------------------|----------|-----------|--------------|-----------|
| F.A.I. RTE. | SECTION | COUNTY | TOTAL SHEETS | SHEET NO. |
| 74 | (10-7)BR | CHAMPAIGN | 20 | 6 |
| CONTRACT NO. 70G16 | | | | |
| ILLINOIS FED. AID PROJECT | | | | |



ALL ARROW SIGNS SHALL BE
BLACK ON ORANGE (21x15)

GENERAL NOTES:

1. TR 259 IS CURRENTLY CLOSED, WILL BE CLOSED DURING REMOVAL AND WILL REMAIN CLOSED FOLLOWING REMOVAL OF THE SUPERSTRUCTURE.
2. I-74 WILL REMAIN OPEN DURING THE DAYTIME WITH ONLY NIGHTTIME LANE CLOSURES ALLOWED.
3. I-74 TRAFFIC WILL BE DETOURED TO US 150 DURING BEAM REMOVAL. THE REMOVAL OF BRIDGE BEAMS WILL BE DONE AT NIGHT AS DISCUSSED IN THE SPECIAL PROVISIONS.
4. CHANGEABLE MESSAGE SIGNS SHALL BE PLACED AT POINTS LOCATED 2-3 MILES AHEAD, OR AS APPROVED BY THE ENGINEER, OF PROPOSED ROAD CLOSURE AREA ALONG I-74 AND UNIVERSITY AVENUE.
5. CONTACT DISTRICT TRAFFIC AND OPERATION ENGINEER AT 217-465-4181 ONE WEEK PRIOR TO IMPLEMENTING THE DETOUR.
6. ALL EXISTING ROAD CLOSED AHEAD AND BARRICADE AHEAD SIGNS AND TYPE III BARRICADES BELONG TO CHAMPAIGN SIGN SHOP AND CHAMPAIGN MAINTENANCE TEAM SECTION.
7. CONTRACTOR SHALL CONTACT RON MAULDING AT 217-466-7290 WITH TWO WEEKS PRIOR NOTICE FOR THE I-74 SHIELDS TO BE AVAILABLE FOR PICKUP AT THE CHAMPAIGN SIGN SHOP.

- TYPE III BARRICADE
- FLASHING AMBER LIGHT (TYPE A)
- CHANGEABLE MESSAGE SIGN

MODEL: \\MODEL\MAME FILE: \\MAME_Plan\Bldg\paw_beaufay.com\FW\DOT\Documents\DOT_Offices\Dir\dir_5\Project\105706\ELCAD\data\CAD\Sheet\105706_16-sh-detour.dgn

| | | |
|------------------------------|------------|-----------|
| USER NAME = Leslie.Hoy | DESIGNED - | REVISED - |
| | DRAWN - | REVISED - |
| PLOT SCALE = 40,0000 * / in. | CHECKED - | REVISED - |
| PLOT DATE = 6/28/2022 | DATE - | REVISED - |

**STATE OF ILLINOIS
DEPARTMENT OF TRANSPORTATION**

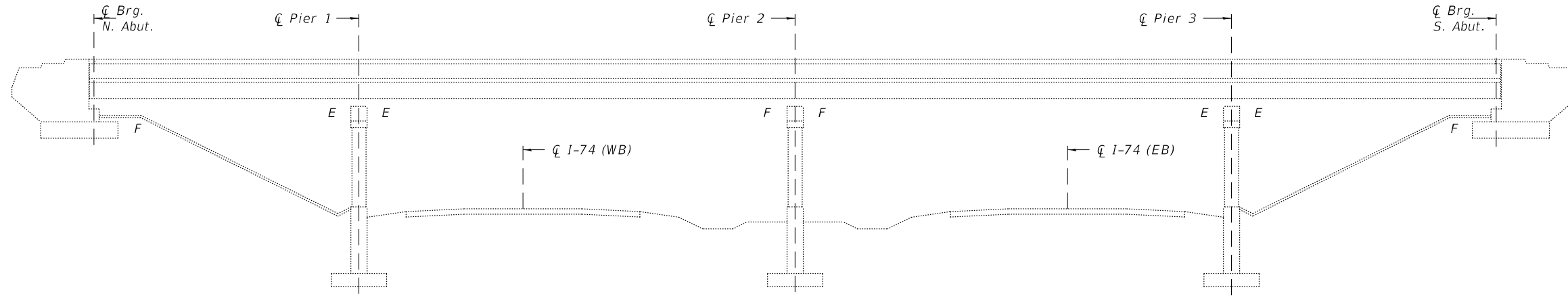
**TRAFFIC CONTROL AND PROTECTION
(TEMPORARY DETOUR)**

SCALE: N/A SHEET 2 OF 2 SHEETS STA. TO STA.

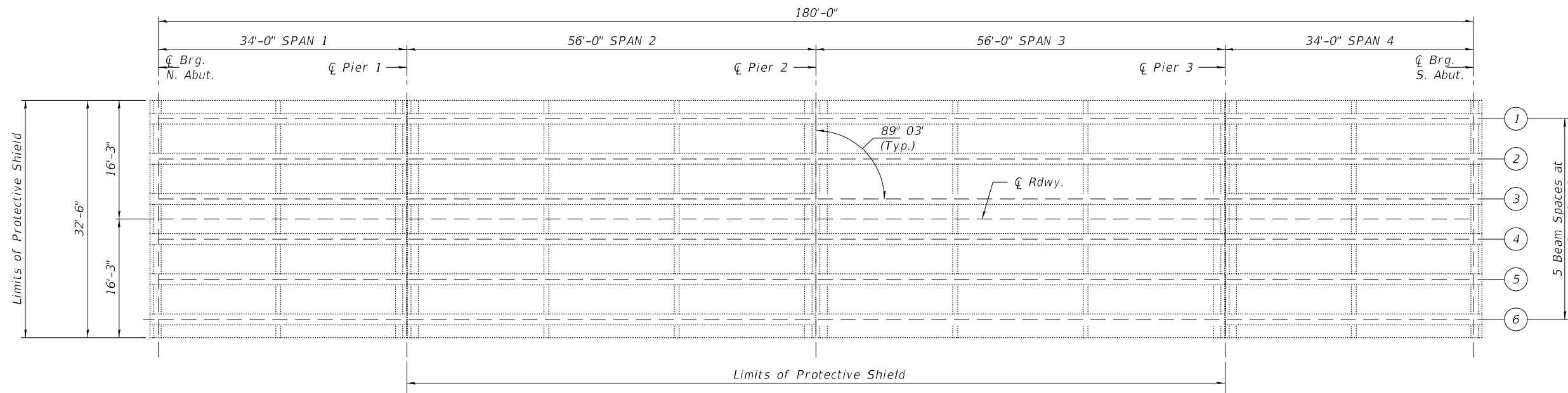
| F.A.I. RTE. | SECTION | COUNTY | TOTAL SHEETS | SHEET NO. |
|---------------------------|----------|-----------|--------------|-----------|
| 74 | (10-7)BR | CHAMPAIGN | 20 | 7 |
| CONTRACT NO. 70G16 | | | | |
| ILLINOIS FED. AID PROJECT | | | | |

Existing Structure: S.N. 010-0180 was built in 1959 as FAI Route 74, Section 10-7HB. It was built as a 4 simple span P.P.C. "I" beam structure. The substructure consists of open stub abutments and multiple round columned piers. The abutments are founded on one row of piles with every other battered. The piers are supported by spread footings. The Back to Back dimension measures 184'-6" while the Out to Out width measures 32'-6". The existing structure has a 9" curb and a 2'-0" safety walk. The minimum vertical under clearance is 14'-9". Township Road 258 is currently closed and FAI 74 traffic will be detoured during construction.

Salvage: One 58 foot steel W36x150 girder installed on the deck of the existing structure to support the damaged beam of the existing structure shall be salvaged. See Special Provisions.



ELEVATION



PLAN

GENERAL PLAN & ELEVATION
 TR 258 OVER
 F.A.I. RTE 74-SECTION 10-7HB
 CHAMPAIGN COUNTY
 STATION 645+81
 STRUCTURE NO. 010-0180

MODEL: \\MODEL\MNMF
 FILE: \\MAILS_P\public\paw_bentley.com\PIV\DOT\Documents\DOT Office\Dir\tr_258\TR258\0570516-sh-0180.dgn

| | | |
|------------------------------|------------|-----------|
| USER NAME = Leslie.Hoy | DESIGNED - | REVISED - |
| | DRAWN - | REVISED - |
| PLOT SCALE = 40,0000 * / in. | CHECKED - | REVISED - |
| PLOT DATE = 6/28/2022 | DATE - | REVISED - |

STATE OF ILLINOIS
 DEPARTMENT OF TRANSPORTATION

GENERAL PLAN & ELEVATION
 S.N. 010-0180

SCALE: N/A SHEET 1 OF 10 SHEETS STA. TO STA.

| F.A.I. RTE. | SECTION | COUNTY | TOTAL SHEETS | SHEET NO. |
|---------------------------|----------|-----------|--------------|-----------|
| 74 | (10-7)BR | CHAMPAIGN | 20 | 8 |
| CONTRACT NO. 70G16 | | | | |
| ILLINOIS FED. AID PROJECT | | | | |

STATE OF ILLINOIS
DEPARTMENT OF TRANSPORTATION

GENERAL NOTES

Removal of Existing Superstructures includes all structure components from face to face of abutments above the abutment seats and pier caps. The handrail and guardrail terminals attached to the deck are also included in this item.

The Contractor is advised that the existing PPC I beams are in a deteriorated condition with reduced load carrying capacity. It is the Contractor's responsibility to account for the conditions of the beams when developing construction procedures for removal of the Superstructure.

If the Contractor's procedures for existing PPC I beam removal involves the placement of heavy equipment on the existing deck, a detailed procedure shall be provided which includes calculations, sealed by an Illinois Licensed Structural Engineer, verifying the adequacy of the existing structure, for the proposed loads. Cost included with Removal of Existing Superstructures. See Section 501 of the Standard Specifications.

Protective Shield is included for protection of live vehicular traffic during any saw cutting activities only and for protection of the roadway during Superstructure removal with FAI 74 closed. If the Contractor's removal procedures show this can be accomplished during FAI 74 closures and the roadway protected by other means, the protective shield may be omitted. The Contractor is responsible for any damage to the FAI 74 roadway.

Existing Structure Information is included with the Contract Letting Documents under Plans and Special Provisions in the "Additional Information" folder.

INDEX OF SHEETS

1. General Plan and Elevation
2. General Notes & Bill of Material
3. - 10. Existing Structure Plans

TOTAL BILL OF MATERIAL

| ITEM | UNIT | QUANTITY |
|-------------------------------------|---------|----------|
| Removal of Existing Superstructures | Each | 1 |
| Protective Shield | Sq. Yd. | 404 |
| | | |
| | | |
| | | |
| | | |

MODEL: \\MODEL\MNMF5
 FILE: \\MAILS_PUB\Public\paw_bentley.com\FWIDOT\Documents\DOT_Offices\Dir\dr: S:\Project\0570G_EI\CAD\DATA\CAD\Sheets\0570G_16-FH-016.dgn

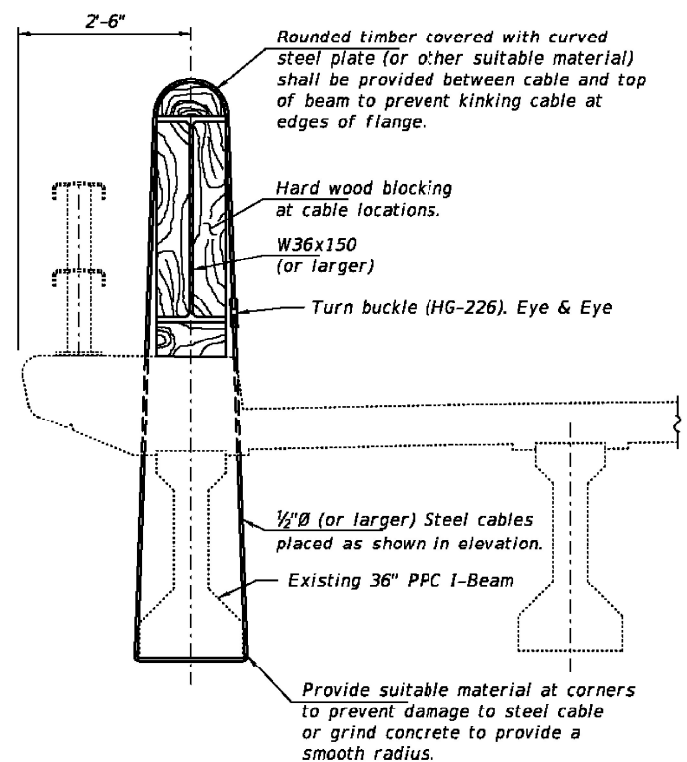
| | | |
|------------------------------|------------|-----------|
| USER NAME = Leslie.Hoy | DESIGNED - | REVISED - |
| | DRAWN - | REVISED - |
| PLOT SCALE = 40,0000 * / in. | CHECKED - | REVISED - |
| PLOT DATE = 6/28/2022 | DATE - | REVISED - |

**STATE OF ILLINOIS
DEPARTMENT OF TRANSPORTATION**

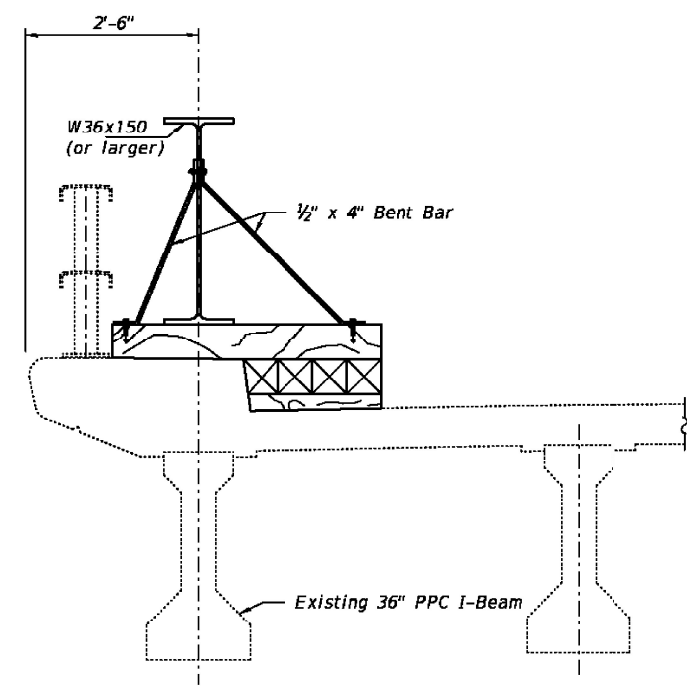
**GENERAL NOTES & BILL OF MATERIAL
S.N. 010-180**

SCALE: N/A SHEET 2 OF 10 SHEETS STA. TO STA.

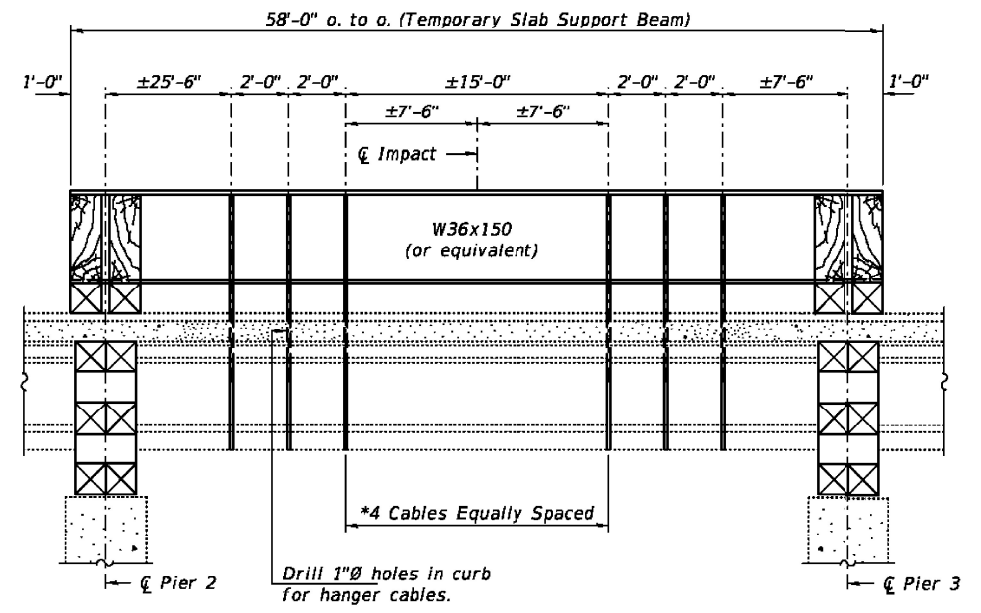
| F.A.I. RTE. | SECTION | COUNTY | TOTAL SHEETS | SHEET NO. |
|---------------------------|----------|-----------|--------------|-----------|
| 74 | (10-7)BR | CHAMPAIGN | 20 | 9 |
| CONTRACT NO. 70G16 | | | | |
| ILLINOIS FED. AID PROJECT | | | | |



SECTION AT CABLE HANGERS



SECTION AT END BLOCKING



**WEST FASCIA LONGITUDINAL SECTION
TEMPORARY SLAB SUPPORT SYSTEM**

Note:
Blocking and any necessary shims shall be placed under the steel beam at all cable locations after the steel beam has been set on the end blocking and allowed to deflect under its own weight.

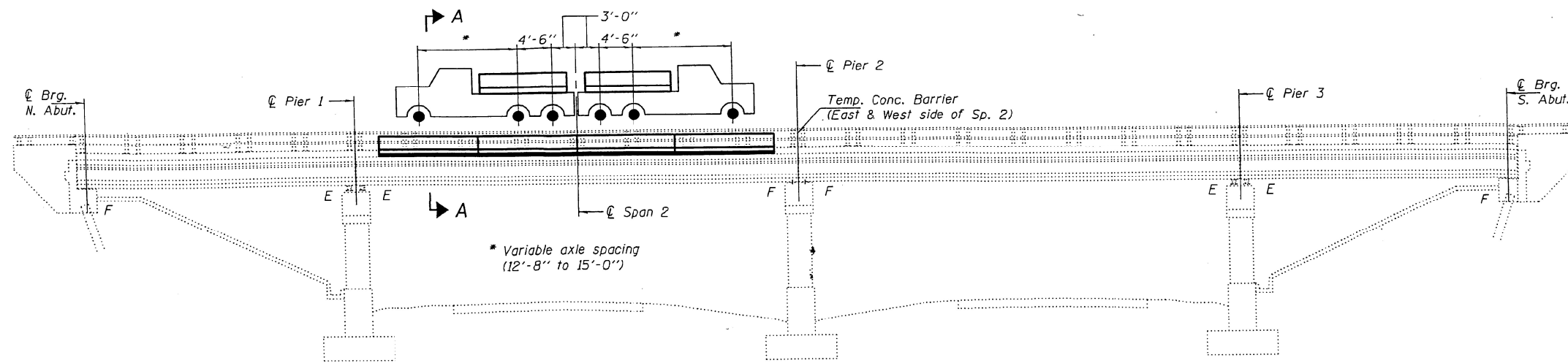
* Cables may need to be adjusted at locations where concrete has spalled off.

| | | | | | | | | | |
|--------------------------|---|-------------------------|---|--------------------------------|-------------------------|--|------------------|-----------------|--------------|
| DESIGNED - VHV | EXAMINED - <i>Timothy A. Daulton</i> ENGINEER OF STRUCTURAL SERVICES | DATE - JANUARY 21, 2020 | STATE OF ILLINOIS DEPARTMENT OF TRANSPORTATION | SUPPORT DETAILS SN 010-0180 | F.A.I. RTE. 74 | SECTION (10-7)BR | COUNTY CHAMPAIGN | TOTAL SHEETS 20 | SHEET NO. 11 |
| CHECKED - ATH | PASSED - <i>Carl Hogg</i> ENGINEER OF BRIDGES AND STRUCTURES | REVISIONS - | | | SHEET NO. 2 OF 2 SHEETS | ILLINOIS FED. AID PROJECT CONTRACT NO. 21503 | | | |
| DRAWN - <i>daburdell</i> | | | | | | | | | |
| CHECKED - VHV ATH | | | | | | | | | |

| | | | | | | | | | |
|------------------------------|------------|-------------|---|--|----------------|----------------------|------------------|--|--------------|
| USER NAME = Leslie.Hoy | DESIGNED - | REVISIONS - | STATE OF ILLINOIS DEPARTMENT OF TRANSPORTATION | S.N. 010-0180 EXISTING STRUCTURE PLANS (FOR INFORMATION ONLY) | F.A.I. RTE. 74 | SECTION (10-7)BR | COUNTY CHAMPAIGN | TOTAL SHEETS 20 | SHEET NO. 11 |
| PLOT SCALE = 40,0000 * / in. | CHECKED - | REVISIONS - | | | SCALE: N/A | SHEET 4 OF 10 SHEETS | STA. TO STA. | ILLINOIS FED. AID PROJECT CONTRACT NO. 70G16 | |
| PLOT DATE = 6/28/2022 | DATE - | REVISIONS - | | | | | | | |

MODEL: I:\MODEL\MARKS
 FILE: MARKS_Plan\I10-7BR.dwg
 PLOT DATE: 6/28/2022
 PLOT SCALE: 40,0000 * / in.
 PLOT DATE: 6/28/2022

010-0180

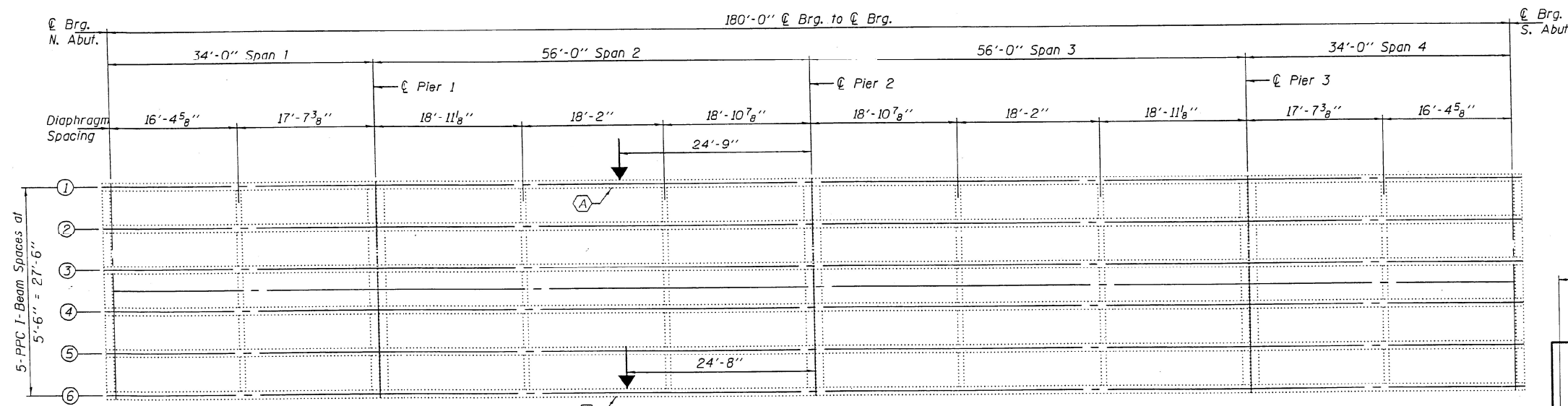


ELEVATION
(Showing location of Preloading)

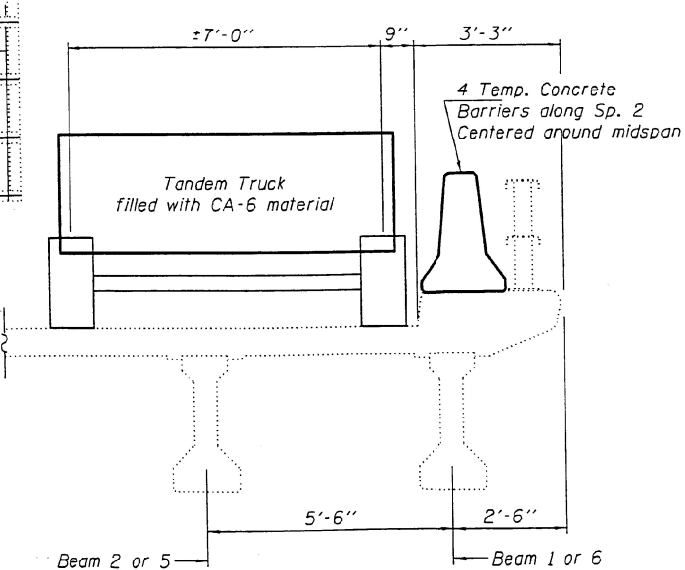
GENERAL NOTES

Preloading shall be kept in place for at least three (3) days after completion of concrete repair or until the concrete has reached an ultimate strength of 5,000 psi.

Plan dimensions and details relative to existing plans are subject to nominal construction variations. The Contractor shall field verify existing dimensions and details affecting new construction and make necessary approved adjustments prior to construction or ordering of materials. Such variations shall not be cause for additional compensation for a change in scope of the work, however, the Contractor will be paid for the quantity actually furnished at the unit price bid for the work.



FRAMING PLAN



SECTION A-A
(Showing location of Preloading)

TOTAL BILL OF MATERIAL

| ITEM | UNIT | QUANTITY |
|--------------------|------|----------|
| PPC I-Beam Repairs | L.S. | 1 |



EXPIRES 11-30-2016

DESIGNED: *Vicki H. Veliz* DATE: APRIL 7, 2015

CHECKED: *[Signature]* PASSED: *[Signature]*

DRAWN: *Baliva* ACTING ENGINEER OF BRIDGES AND STRUCTURES

CHECKED: *[Signature]*

STATE OF ILLINOIS
DEPARTMENT OF TRANSPORTATION

GENERAL PLAN, ELEVATION & PRELOADING DETAILS
TOWNSHIP ROAD (TR 258) OVER I-74
SN 010-0180

| F.A.I. RTE. | SECTION | COUNTY | TOTAL SHEETS | SHEET NO. |
|-------------|----------|-----------|--------------|-----------|
| 74 | (10-7)BR | CHAMPAIGN | 20 | 12 |

CONTRACT NO. 70G16

010-0180

| USER NAME | DESIGNED | REVISIONS |
|------------|-----------|-------------|
| Leslie.Hoy | - | - |
| | DRAWN - | REVISIONS - |
| | CHECKED - | REVISIONS - |
| | DATE - | REVISIONS - |

STATE OF ILLINOIS
DEPARTMENT OF TRANSPORTATION

S.N. 010-0180 EXISTING STRUCTURE PLANS
(FOR INFORMATION ONLY)

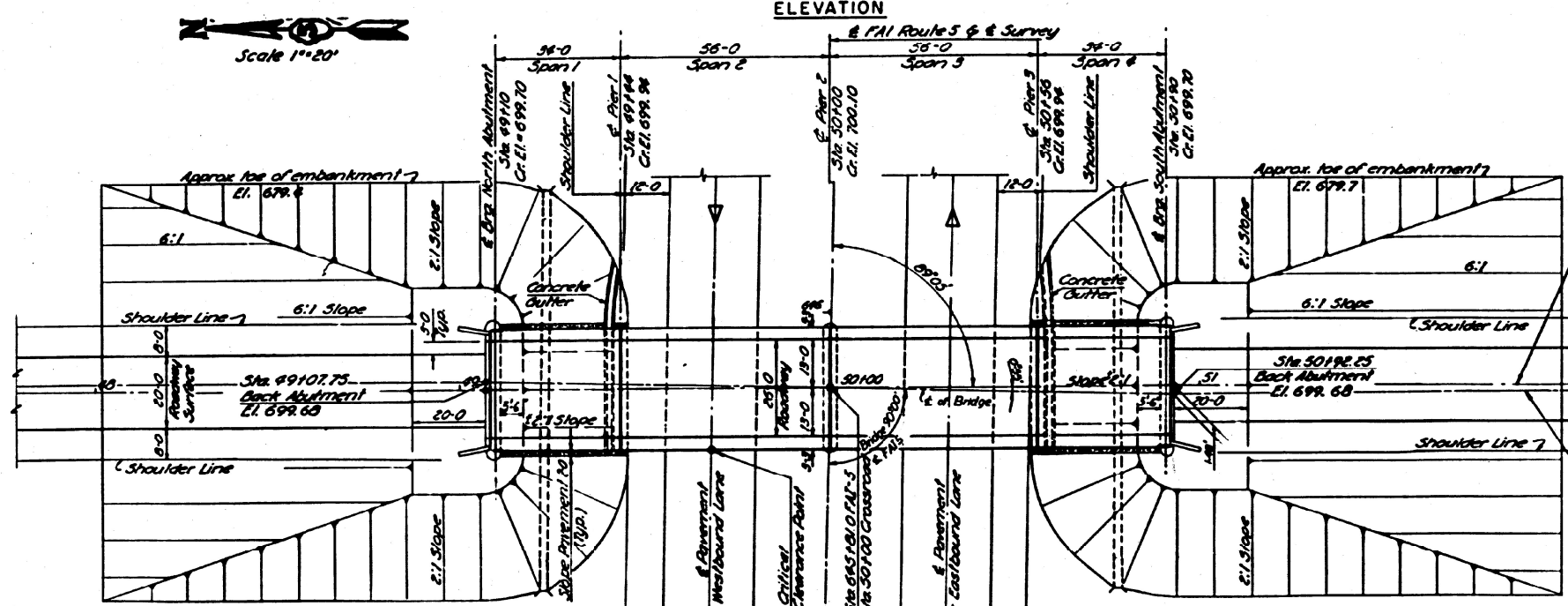
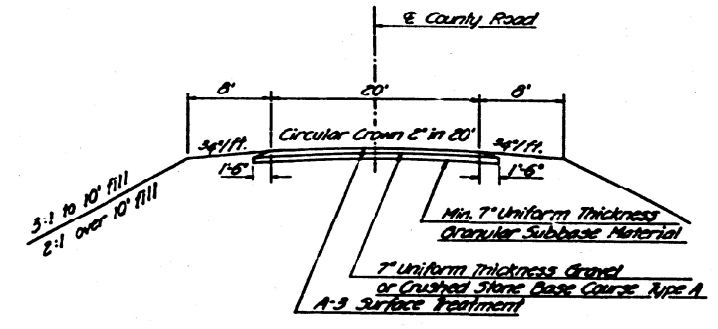
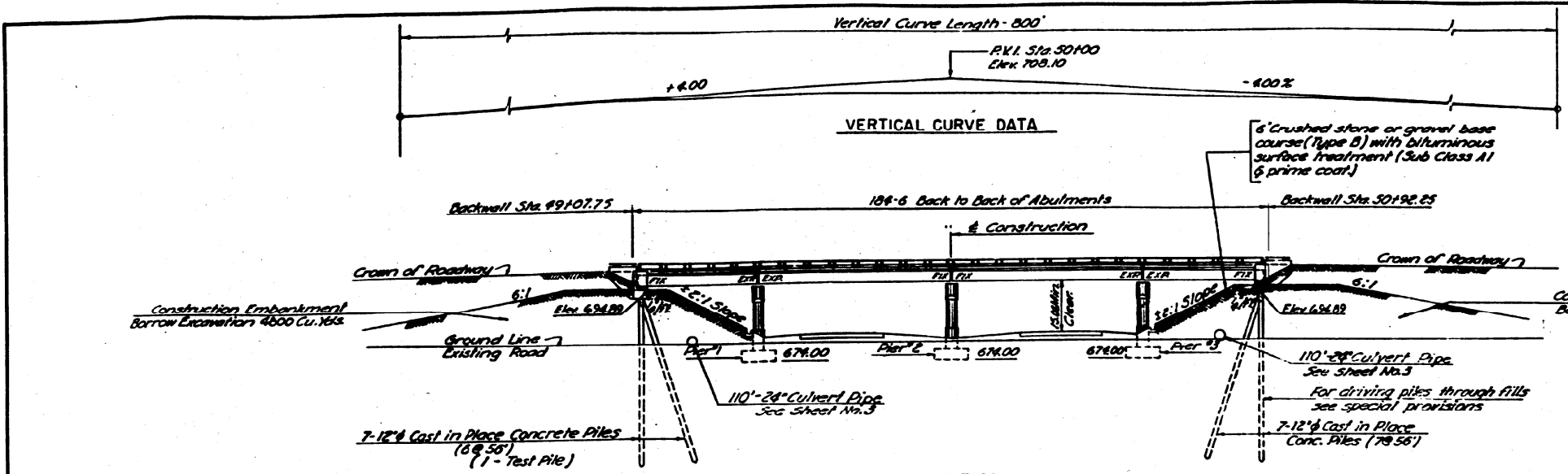
SCALE: N/A SHEET 5 OF 10 SHEETS STA. TO STA.

| F.A.I. RTE. | SECTION | COUNTY | TOTAL SHEETS | SHEET NO. |
|-------------|----------|-----------|--------------|-----------|
| 74 | (10-7)BR | CHAMPAIGN | 20 | 12 |

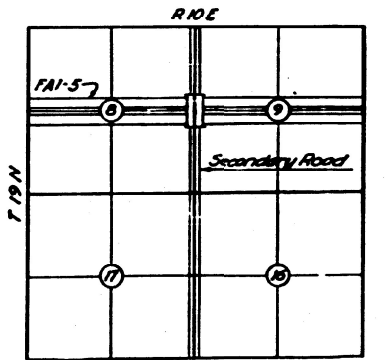
CONTRACT NO. 70G16

MODEL: I:\MODEL\MATF... FILE: MATF... PROJECT: 0570G... SHEET: 0570G16

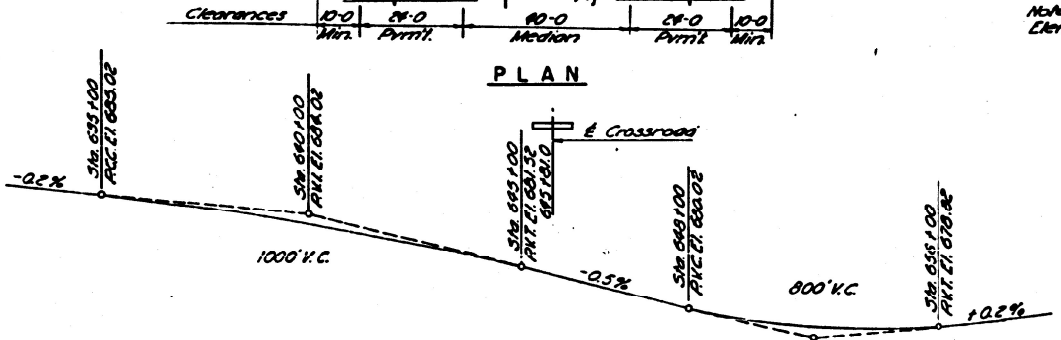
| F.A.I. R.T.E. | SECTION | COUNTY | TOTAL SHEETS | SHEET NO. |
|-----------------------------|---------|-----------|--------------|-----------|
| 5 | 10-7HB | CHAMPAIGN | 18 | 5 |
| FEDERAL ROAD DISTRICT NO. 7 | | | | |
| ILLINOIS | | | | |



TYPICAL APPROACH ROADWAY CROSS SECTION



BRIDGE LOCATION



PROFILE OF CROWN FOR FAI ROUTE 5

SM-N&C in P.P.
298' RT. Sta. 645100 & Survey
El. 580.68

NOTE: Design Loading this Structure H-15-S R-44
County Road Classification E-1

CONSOER, TOWNSEND & ASSOCIATES
CONSULTING ENGINEERS CHICAGO, ILLINOIS

ILLINOIS DIVISION OF HIGHWAYS
COUNTY ROAD BRIDGE OVER FAI-5
FAI-5 SECTION 10-7HB
CHAMPAIGN COUNTY STA. 645+81

GENERAL PLAN AND LOCATION

| | | | |
|----------|-----------|------|----------------|
| DESIGNED | BY | DATE | REVISION |
| GEE | JH | BB | GEE LDB C.W.M. |
| DATE | 6/28/2022 | DATE | NSM 5-28-21 |

Revised 12-21-21 HJM - Borm width changed from 6' to 5'6" & slope changed from 2:1 to 2.5:1.

| | | |
|-----------------------------|------------|-----------|
| USER NAME = Leslie.Hoy | DESIGNED - | REVISED - |
| PLOT SCALE = 40,0000' / in. | DRAWN - | REVISED - |
| PLOT DATE = 6/28/2022 | CHECKED - | REVISED - |
| | DATE - | REVISED - |

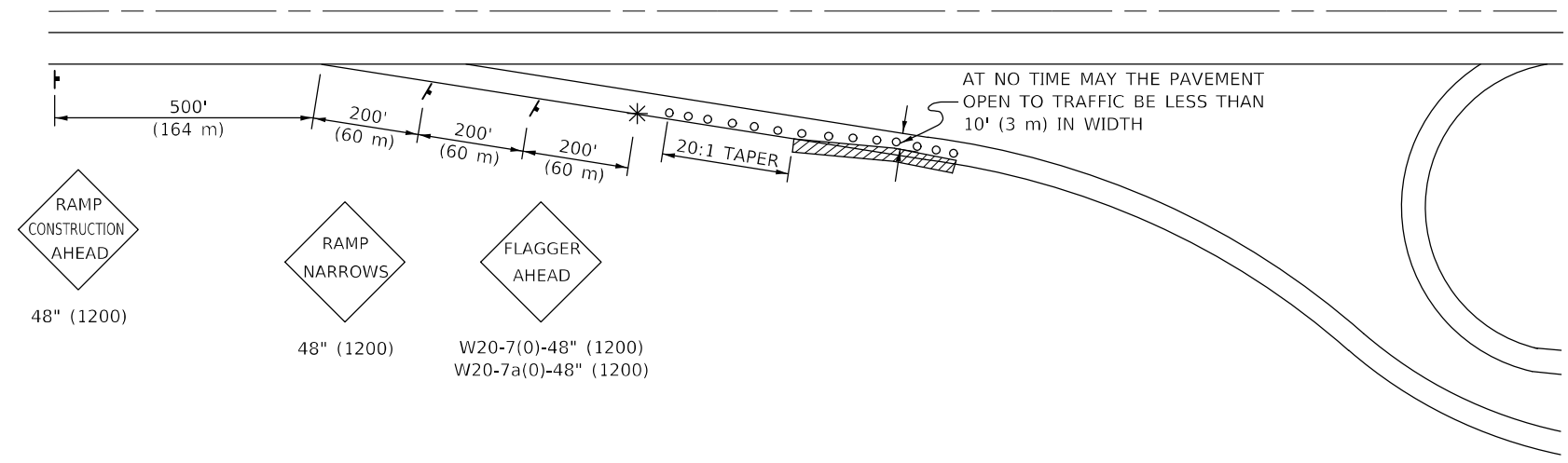
STATE OF ILLINOIS
DEPARTMENT OF TRANSPORTATION

S.N. 010-0180 EXISTING STRUCTURE PLANS
(FOR INFORMATION ONLY)

SCALE: N/A SHEET 7 OF 10 SHEETS STA. TO STA.

| | | | | |
|---------------------------|----------|-----------|--------------|-----------|
| F.A.I. R.T.E. | SECTION | COUNTY | TOTAL SHEETS | SHEET NO. |
| 74 | (10-7)BR | CHAMPAIGN | 20 | 14 |
| CONTRACT NO. 70G16 | | | | |
| ILLINOIS FED. AID PROJECT | | | | |

APPLICATION NO. 1
DAY OPERATION ONLY
PARTIAL RAMP CLOSURE



SYMBOLS

- (APPLICATION NO. 1) TYPE I OR II BARRICADES OR DRUMS @ 50' (15 m) CTS.
- ⊗ (APPLICATION NO. 2) TYPE I OR II BARRICADES OR DRUMS @ 25' (7.5 m) CTS. W/STEADY BURNING LIGHTS
- * (APPLICATION NO. 1) FLAGGER PLACED AS DIRECTED BY THE ENGINEER
- † SIGN ON PORTABLE OR PERMANENT SUPPORT
- ▨ WORK AREA

TYPICAL APPLICATIONS

- PAVEMENT PATCHING
- PIPE UNDERDRAINS
- HMA RESURFACING

GENERAL NOTES

CONSTRUCTION OPERATIONS SHALL BE CONFINED TO AN AREA NARROW ENOUGH THAT A MINIMUM OF 10' (3 m) OF PAVEMENT SHALL BE OPEN TO TRAFFIC AT ALL TIMES.

FULL WIDTH PAVEMENT ON THE RAMPS SHALL BE OPEN TO TRAFFIC AT NIGHT.

WHEN NO WORK IS BEING PERFORMED, THE FLAGGER WILL NOT BE REQUIRED. IF THE FLAGGER IS NOT PRESENT, THE FLAGGER SIGNS SHALL BE REMOVED OR COVERED.

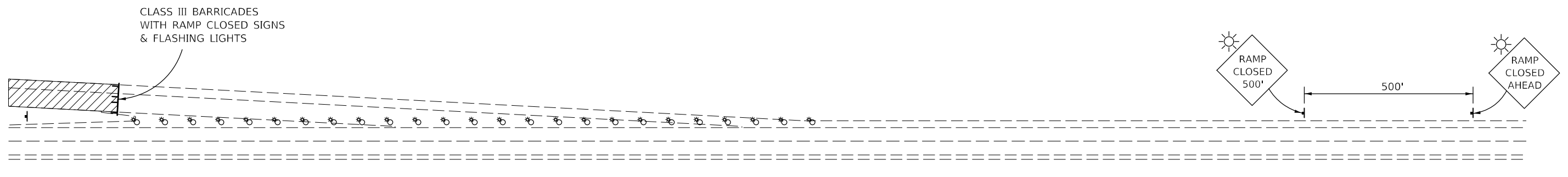
ALL SIGNS SHALL BE POST MOUNTED IF WORK IN THE AREA EXCEEDS FOUR DAYS OF DAYTIME OPERATIONS.

LONGITUDINAL DIMENSIONS MAY BE ADJUSTED SLIGHTLY TO FIT FIELD CONDITIONS.

ALL VEHICLES, EQUIPMENT, WORKERS (EXCEPT FLAGGER) AND THEIR ACTIVITIES ARE RESTRICTED AT ALL TIMES TO ONE SIDE OF THE PAVEMENT UNLESS OTHERWISE AUTHORIZED BY THE DISTRICT ENGINEER.

TRAFFIC CONTROL FOR ALL RAMPS SHALL BE IN ACCORDANCE WITH THE APPROPRIATE APPLICATION OF PLAN DETAIL TRAFFIC CONTROL FOR RAMPS AND WILL NOT BE PAID FOR SEPARATELY, BUT SHALL BE INCLUDED IN THE CONTRACT LUMP SUM PRICES FOR TRAFFIC CONTROL AND PROTECTION, STANDARD 701401 AND TRAFFIC CONTROL AND PROTECTION, STANDARD 701406.

APPLICATION NO. 2
RAMP CLOSURE



GENERAL NOTES

STEADY BURN LIGHTS ARE NOT REQUIRED FOR DAYTIME OPERATIONS.

CONTACT THE DISTRICT TRAFFIC OPERATIONS ENGINEER AT 217-465-4181, ONE WEEK PRIOR TO CLOSING THE RAMP.

Note: All dimensions are in INCHES (millimeters) unless otherwise shown.

MODEL: I:\MODEL\NAME: FILE: NAME: PROJECT: DISTRICT: OFFICE: SHEETS: CONTRACT: CONTRACT NO. 70G16

| | | |
|------------------------------|------------|-----------------|
| USER NAME = Leslie.Hoy | DESIGNED - | REVISED - 11/06 |
| | DRAWN - | REVISED - |
| PLOT SCALE = 40,0000 * / in. | CHECKED - | REVISED - |
| PLOT DATE = 6/28/2022 | DATE - | REVISED - |

**STATE OF ILLINOIS
DEPARTMENT OF TRANSPORTATION**

TRAFFIC CONTROL FOR RAMPS

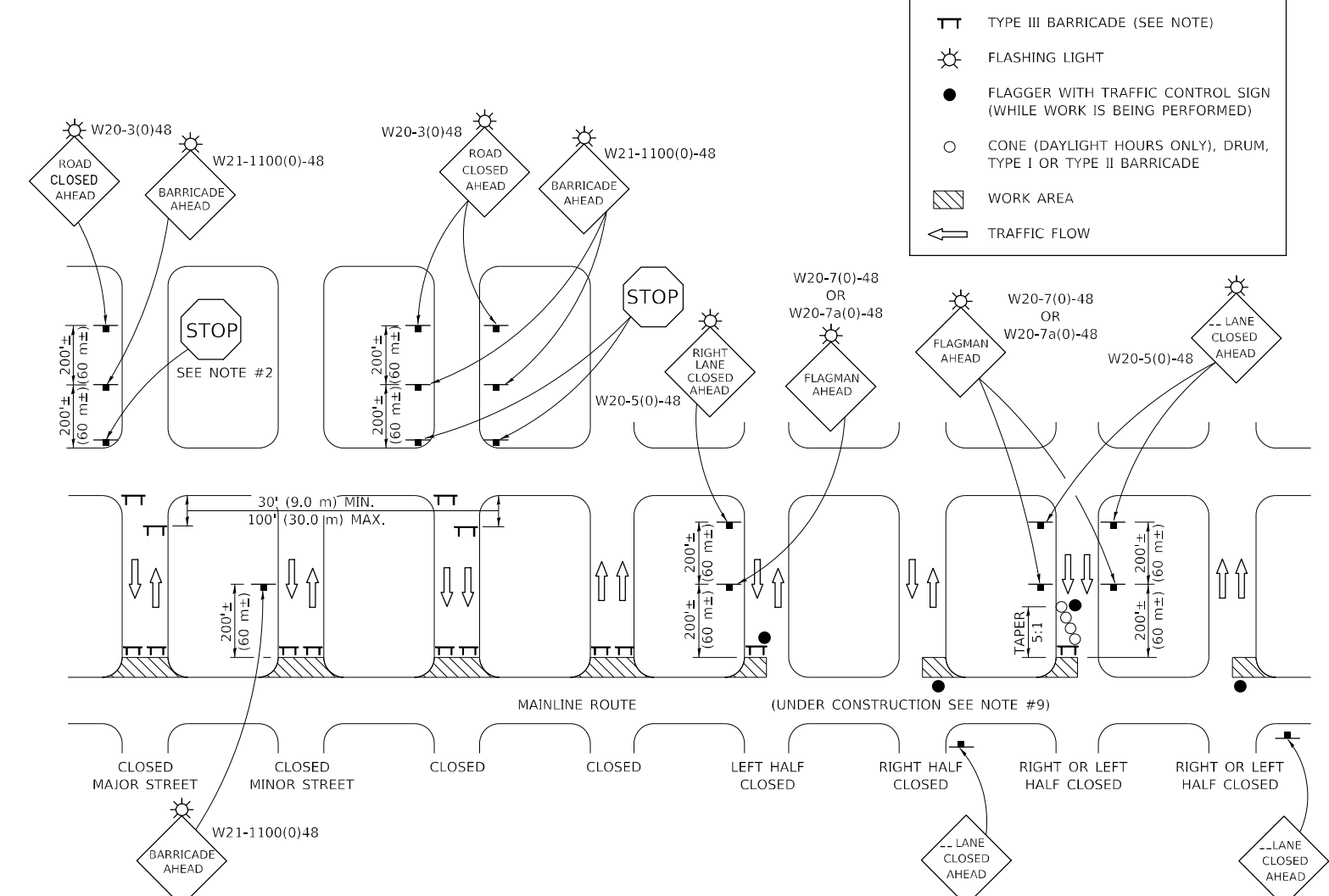
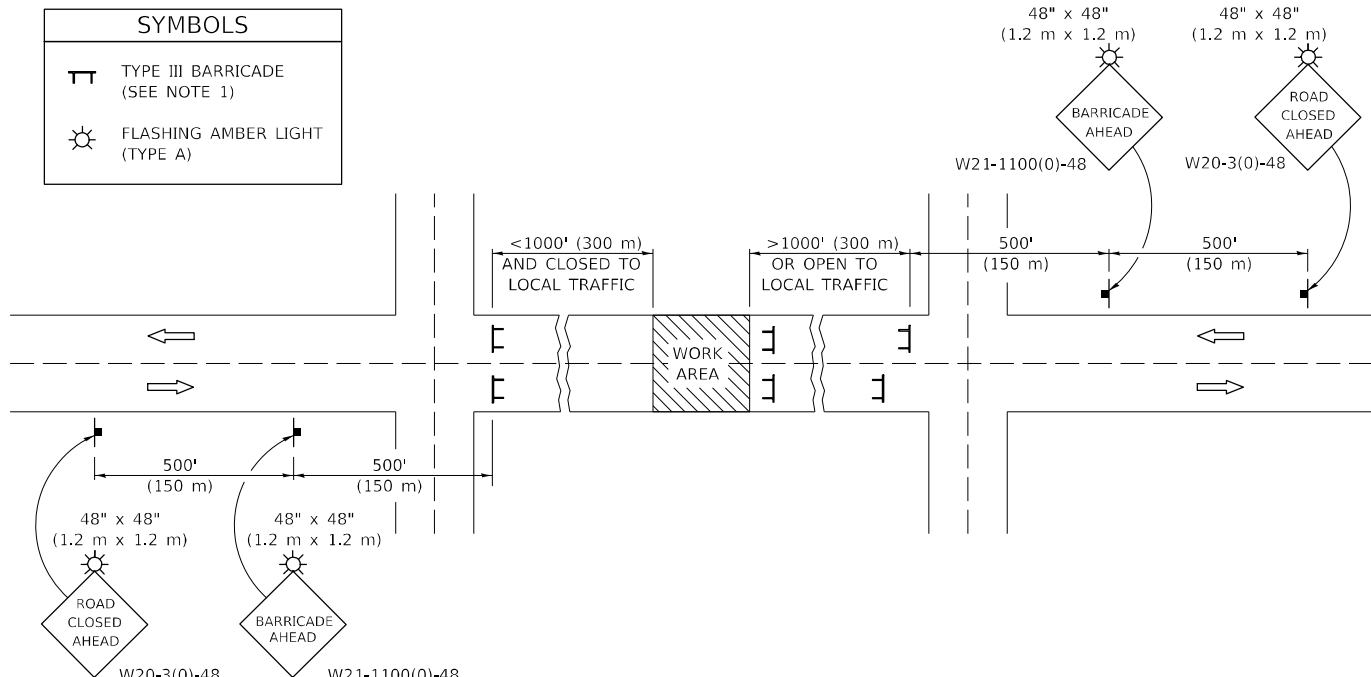
SCALE: N/A SHEET 1 OF 1 SHEETS STA. TO STA.

DISTRICT 5 DETAIL NO. 70103710

| F.A.I. RTE. | SECTION | COUNTY | TOTAL SHEETS | SHEET NO. |
|---------------------------|----------|-----------|--------------|-----------|
| 74 | (10-7)BR | CHAMPAIGN | 20 | 18 |
| CONTRACT NO. 70G16 | | | | |
| ILLINOIS FED. AID PROJECT | | | | |

ROAD CLOSURE

SIDEROAD / STREET CLOSURE



GENERAL NOTES

- TYPE III BARRICADES SHALL BE AS SHOWN ON STANDARD 701901 "TYPICAL APPLICATIONS OF TYPE III BARRICADES CLOSING A ROAD". EACH TYPE III BARRICADE SHALL HAVE TWO FLASHING AMBER LIGHTS MOUNTED ABOVE IT.
- IF THE ROAD IS OPEN TO LOCAL TRAFFIC OR EXCEEDS 1000' (300 m), ANOTHER SET OF TYPE III BARRICADES, EQUIPPED AS IN NOTE 1 ABOVE, SHALL BE PLACED AT EACH END OF THE WORK AREA.
- WHEN A STOP CONDITION EXISTS, NO SIGNS ARE REQUIRED IN ADVANCE OF THE "STOP" SIGN WHEN THE ROAD IS CLOSED WITHIN 100' (30 m) OF THE INTERSECTION.
- STANDARD 701901 SHALL APPLY FOR THE PLACEMENT & DESIGN OF TYPE III BARRICADES.
- IF A TYPE III BARRICADE WITH AN ATTACHED SIGN PANEL WHICH MEETS NCHRP 350 IS NOT AVAILABLE, THE SIGNS MAY BE MOUNTED ON AN NCHRP 350 TEMPORARY SIGN SUPPORT DIRECTLY IN FRONT OF THE BARRICADE.
- REFLECTORIZED STRIPING SHALL APPEAR ON BOTH SIDES OF THE TYPE III BARRICADES IF ROAD IS OPEN TO LOCAL TRAFFIC.
- ALL SIGNS SHALL BE POST MOUNTED IF THE CLOSURE TIME EXCEEDS FOUR DAYS.
- A MINIMUM OF TWO FLASHING LIGHTS SHALL BE USED AT NIGHT ON EACH APPROACH IN ADVANCE OF THE WORK AREA. FLASHING LIGHTS SHALL BE INSTALLED ABOVE THE FIRST TWO SIGNS IN THE SERIES.
- LONGITUDINAL DIMENSIONS MAY BE ADJUSTED SLIGHTLY TO FIT FIELD CONDITIONS.
- FORMS BT. 725 AND BT. 726 ARE REQUIRED.
- WHEN A SIDEROAD INTERSECTS THE HIGHWAY ON WHICH WORK IS BEING PERFORMED, ADDITIONAL TRAFFIC DEVICES SHALL BE ERECTED AND PROVIDED AS DIRECTED BY THE ENGINEER.
- AN ADDITIONAL SIGN MAY BE REQUIRED AT A MAJOR INTERSECTING ROAD IN ADVANCE OF THE CLOSURE. THE ADDITIONAL SIGN SHALL GIVE THE DISTANCE TO THE BARRICADE IN MILES OR FRACTIONS OF A MILE.

GENERAL NOTES

- TYPE III BARRICADES SHALL BE AS SHOWN ON "TYPICAL APPLICATIONS OF TYPE III BARRICADES CLOSING A ROAD". EACH TYPE III BARRICADE SHALL HAVE TWO FLASHING AMBER LIGHTS MOUNTED ABOVE IT.
- WHERE A STOP CONDITION EXISTS, AS SHOWN ABOVE, WARNING SIGNS MAY BE OMITTED IN ADVANCE OF THE "STOP" SIGN.
- STANDARD 701901 SHALL APPLY FOR THE PLACEMENT & MANUFACTURE OF TYPE III BARRICADES.
- ALL SIGNS SHALL BE POST MOUNTED IF THE CLOSURE TIME EXCEEDS FOUR DAYS.
- ONE FLASHING LIGHT IS REQUIRED ABOVE EACH ADVANCE WARNING SIGN DURING HOURS OF DARKNESS.
- LONGITUDINAL DIMENSIONS MAY BE ADJUSTED SLIGHTLY TO FIT FIELD CONDITIONS.
- FORMS BT 725 AND BT 726 ARE REQUIRED.
- THE MAINLINE ROUTE TEMPORARY TRAFFIC CONTROL SHALL BE IN ACCORDANCE WITH THE PLANS, SPECIAL PROVISIONS AND STANDARD SPECIFICATIONS.
- ALL FLAGGERS REQUIRED AT SIDE ROADS AND ENTRANCES REMAINING OPEN TO TRAFFIC AND/OR ADDITIONAL BARRICADES REQUIRED BY THE ENGINEER TO CLOSE SIDE ROADS AND ENTRANCES WILL BE PAID FOR ACCORDING TO ARTICLE 109.04.

Note: All dimensions are in INCHES (millimeters) unless otherwise shown.

MODEL: I:\MODELS\MHFE... FILE NAME: ...

| | | |
|------------------------------|------------|---------------------|
| USER NAME = Leslie.Hoy | DESIGNED - | REVISED - 11/06 |
| | DRAWN - | REVISED - 12/07 |
| PLOT SCALE = 40,0000 * / in. | CHECKED - | REVISED - 09/09 KJT |
| PLOT DATE = 6/28/2022 | DATE - | REVISED - |

**STATE OF ILLINOIS
DEPARTMENT OF TRANSPORTATION**

**TRAFFIC CONTROL & PROTECTION DEVICES
(ROAD & SIDEROAD / STREET CLOSURES)**

SCALE: N/A SHEET 1 OF 1 SHEETS STA. TO STA.

DISTRICT 5 DETAIL NO. 7020000

| F.A.I. RTE. | SECTION | COUNTY | TOTAL SHEETS | SHEET NO. |
|---------------------------|----------|-----------|--------------------|-----------|
| 74 | (10-7)BR | CHAMPAIGN | 20 | 19 |
| | | | CONTRACT NO. 70G16 | |
| ILLINOIS FED. AID PROJECT | | | | |

DESIGNER NOTE: INCLUDE SPECIAL PROVISION "TRAFFIC CONTROL AND PROTECTION FOR TEMPORARY DETOUR"

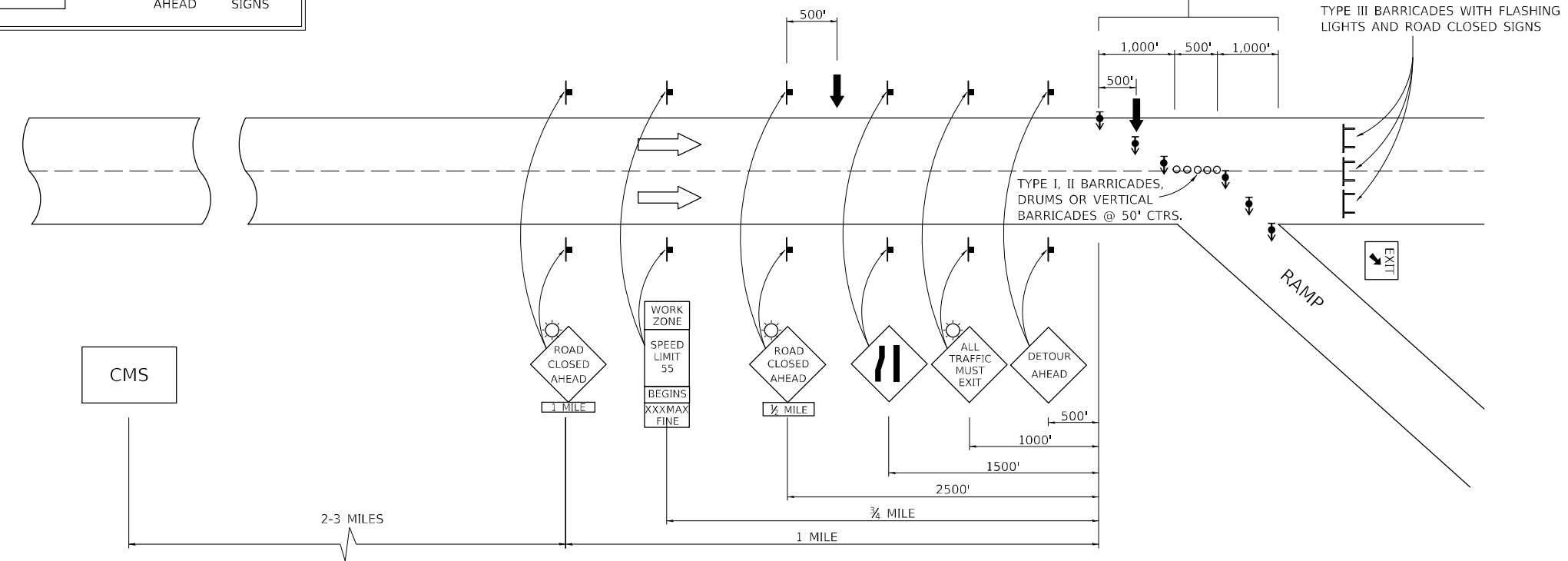
INTERSTATE DETOUR USING ENTRANCE AND EXIT RAMP

A CHANGEABLE MESSAGE SIGN SHALL BE USED IN ADVANCE OF SIGNING TO WARN OF CLOSURE

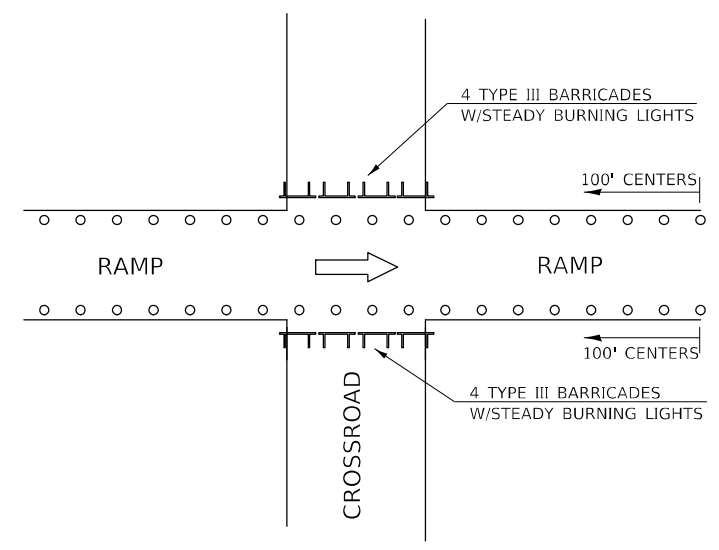
| | | | |
|-----|-------------|-----------------|---------------------|
| CMS | ROAD CLOSED | 2-3 MILES AHEAD | FOLLOW DETOUR SIGNS |
|-----|-------------|-----------------|---------------------|

DIRECTIONAL BARRICADES WITH STEADY BURNING LIGHTS AT 50' (15 m) CTS. IN TAPER. DRUMS WITH STEADY BURNING LIGHTS IN TANGENT (BETWEEN TAPERS) AT 100' (30 m) CTS.

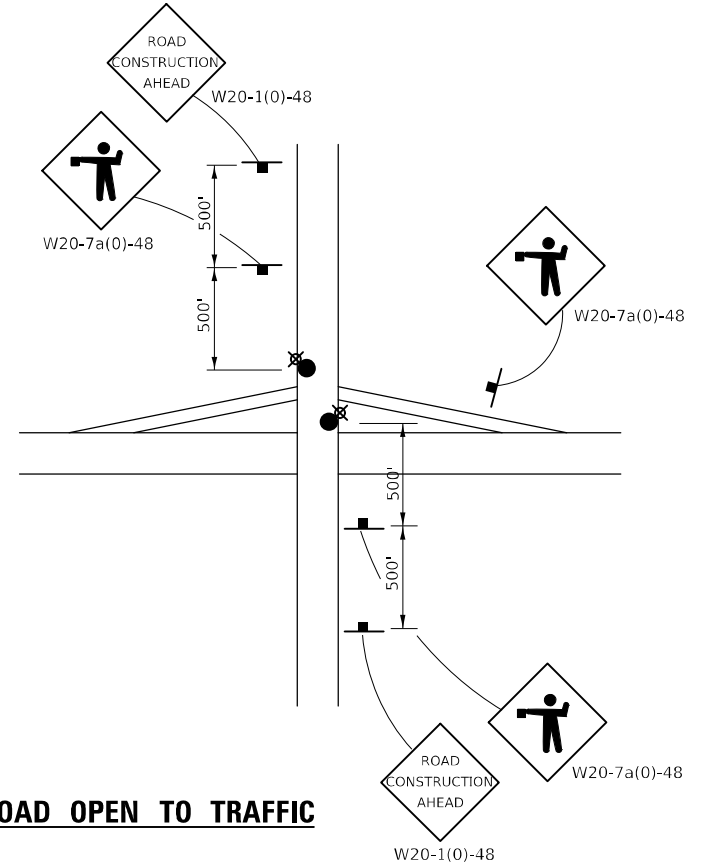
FOR OFF PEAK CLOSURES LESS THAN 24 HOURS, THE TANGENT SECTION MAY BE OMITTED BY APPROVAL OF THE ENGINEER.



| SYMBOLS | |
|---------|--|
| | ARROW BOARD |
| | SIGN |
| | DRUM W/STEADY BURNING LIGHT |
| | TYPE III BARRICADE |
| | DIRECTIONAL BARRICADE W/STEADY BURNING LIGHT |
| | LIGHTED FLAGGER STATIONS |



CROSSROAD CLOSED TO TRAFFIC



CROSSROAD OPEN TO TRAFFIC

Note: All dimensions are in INCHES (millimeters) unless otherwise shown.

MODEL: I:\MODEL\MMF5 FILE: MMF5.DWG DATE: 6/28/2022 9:10:10 AM

| | | |
|------------------------------|------------|-----------------|
| USER NAME = Leslie.Hoy | DESIGNED - | REVISED - 12/06 |
| | DRAWN - | REVISED - 01/10 |
| PLOT SCALE = 40,0000 * / in. | CHECKED - | REVISED - |
| PLOT DATE = 6/28/2022 | DATE - | REVISED - |

**STATE OF ILLINOIS
DEPARTMENT OF TRANSPORTATION**

TRAFFIC CONTROL & PROTECTION FOR TEMPORARY DETOUR

SCALE: N/A SHEET 1 OF 1 SHEETS STA. TO STA.

DISTRICT 5 DETAIL NO. X7011005

| F.A. RTE. | SECTION | COUNTY | TOTAL SHEETS | SHEET NO. |
|---------------------------|---------|--------|--------------|-----------|
| | | | 20 | 20 |
| CONTRACT NO. | | | | |
| ILLINOIS FED. AID PROJECT | | | | |