

STATE OF ILLINOIS  
DEPARTMENT OF TRANSPORTATION

F.A. RTE.	SECTION	COUNTY	TOTAL SHEETS	SHEET NO.
*	DIST 8 ELECTRICAL 2023-1	*	6	1
**VARIOUS		ILLINOIS	CONTRACT NO. 76P97	

**INDEX OF SHEETS**

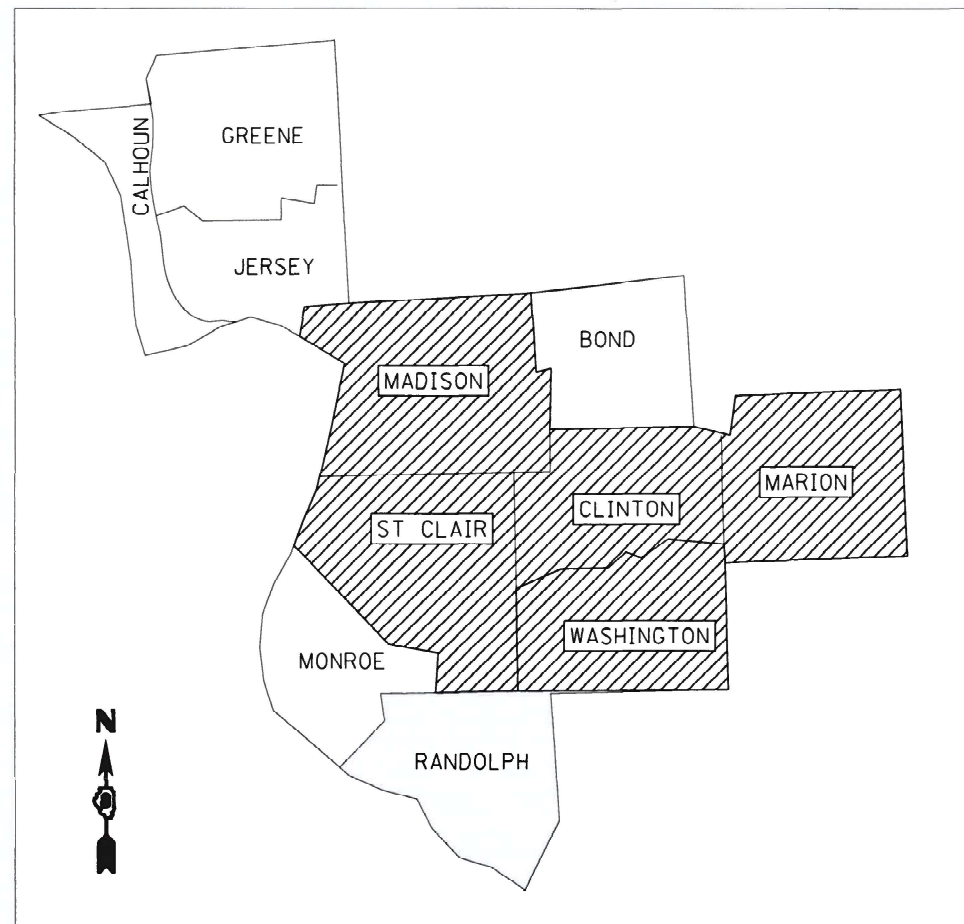
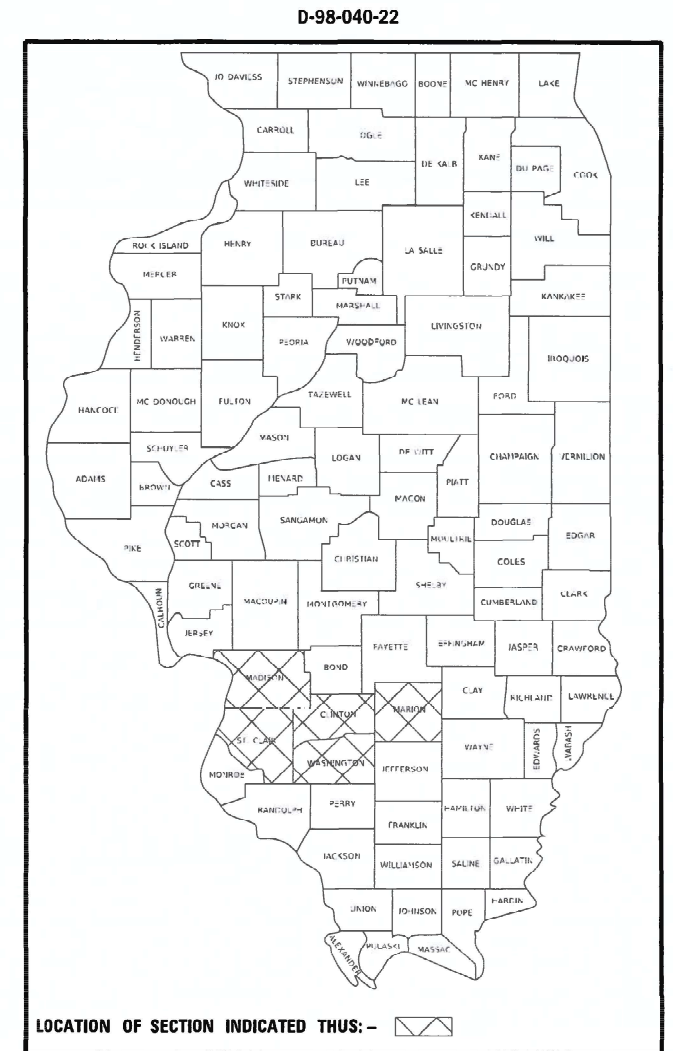
1. COVER SHEET
2. GENERAL NOTES AND TYPICAL WORK ORDER FORMS
3. SUMMARY OF QUANTITIES
- 4-6. MIXERS

FOR LIST OF HIGHWAY STANDARDS, SEE SHEET NO. 2

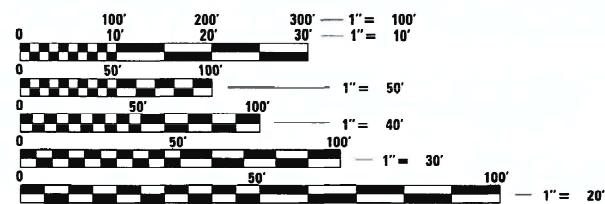
**PROPOSED  
HIGHWAY PLANS**

**VARIOUS ROUTES  
SECTION DIST 8 ELECTRICAL 2023-1  
REPAIR & MAINTENANCE OF ELECTRICAL  
EQUIPMENT AT PUMP STATIONS  
VARIOUS COUNTIES**

C-98-070-22



NOTE: WORK CAN BE LOCATED WITHIN ANY OF THE ABOVE NOTED COUNTIES WITHIN DISTRICT 8 / REGION 5.



FULL SIZE PLANS HAVE BEEN PREPARED USING STANDARD ENGINEERING SCALES. REDUCED SIZED PLANS WILL NOT CONFORM TO STANDARD SCALES. IN MAKING MEASUREMENTS ON REDUCED PLANS, THE ABOVE SCALES MAY BE USED.

J.U.L.I.E.  
JOINT UTILITY LOCATION INFORMATION FOR EXCAVATORS  
1-800-892-0123  
OR 811

PROJECT ENGINEER: CHERYL KEPLAR  
PROJECT MANAGER: PHILLIP SAWYER  
SQUAD LEADER: MICHAEL PRESTON  
CONTRACT NO. 76P97

STATE OF ILLINOIS  
DEPARTMENT OF TRANSPORTATION

SUBMITTED June 17, 2022  
Walter Brown, P.E. REGIONAL ENGINEER

August 19, 2022  
Scott A. Etkin  
ENGINEER OF DESIGN AND ENVIRONMENT

August 19, 2022  
Stephen M. Smith  
DIRECTOR OF HIGHWAYS PROJECT IMPLEMENTATION

PRINTED BY THE AUTHORITY  
OF THE STATE OF ILLINOIS

GENERAL NOTES

1. THE LOCATIONS OF THE REPAIR AREAS SHALL BE DETERMINED BY THE ENGINEER/DEPARTMENT.
2. NO MATERIAL SHALL BE LEFT ON OR NEAR THE ROADWAY DURING NON-WORKING HOURS.
3. ANY NECESSARY TRAFFIC CONTROL WILL BE PROVIDED BY THE CONTRACTOR APPROPRIATE STANDARDS ARE LISTED BELOW.
4. A FLAGGER SHALL BE REQUIRED AT ALL TIMES WHEN WORKERS OR EQUIPMENT ARE ENCROACHING ON THE LANE OF TRAFFIC.
5. WHEN NO WORK IS BEING PERFORMED, THE FLAGGERS WILL NOT BE REQUIRED. IF THE FLAGGERS ARE NOT PRESENT, THE FLAGGER SIGNS SHALL BE REMOVED OR COVERED.
6. 45 & 55 MPH SIGNS ARE INCLUDED IN ALL INTERSTATE LANE CLOSURES. IF THE LANE CLOSURE DURATION IS LESS THAN 4 HOURS, THE 45 & 55 MPH SIGNS ARE NOT REQUIRED.
7. ANY WORK ORDER MAY BE CANCELLED AT THE ENGINEER'S/DEPARTMENT'S DISCRETION.
8. NO OVERNIGHT LANE CLOSURES WILL BE ALLOWED.

9. HIGHWAY STANDARDS

000001-08	701301-04
001006	701400-11
701001-02	701401-13
701006-05	701601-09
701106-02	701901-08



**Work Order**

Requested By: \_\_\_\_\_ Date: \_\_\_\_\_ Time: \_\_\_\_\_

Assigned To: \_\_\_\_\_ Received From: \_\_\_\_\_

Estimated Cost: \_\_\_\_\_

Location: \_\_\_\_\_

Problem: \_\_\_\_\_

Ref/Accident #: \_\_\_\_\_ Claim #: \_\_\_\_\_

Remarks: \_\_\_\_\_  
 \_\_\_\_\_  
 \_\_\_\_\_  
 \_\_\_\_\_  
 \_\_\_\_\_  
 \_\_\_\_\_  
 \_\_\_\_\_  
 \_\_\_\_\_  
 \_\_\_\_\_  
 \_\_\_\_\_  
 \_\_\_\_\_

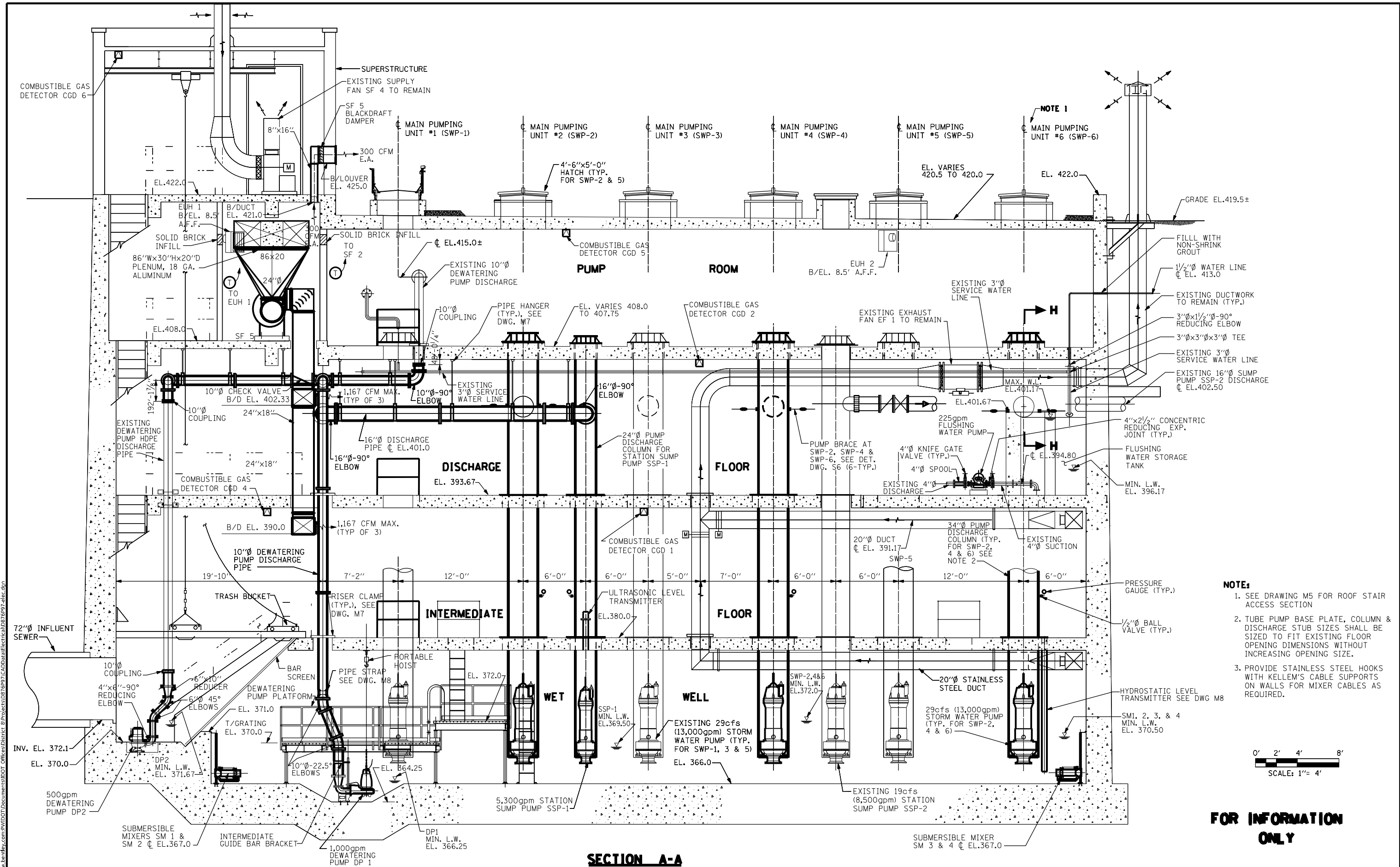
Completed By: \_\_\_\_\_ Date/Time Completed: \_\_\_\_\_

REV. - MS

MODEL: D:\default  
 FILE: M:\misc\p\illdot\ch\benley.com\p\illdot\documents\DOT\_Offices\Dir\cc\_8\Project\087697\CAD\data\Electrical\087697\_4lec.dgn

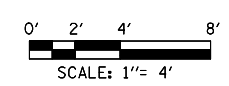
USER NAME = prestonme	DESIGNED -	REVISED -	<b>STATE OF ILLINOIS DEPARTMENT OF TRANSPORTATION</b>	<b>GENERAL NOTES TYPICAL WORK ORDER FORM</b>		F.A. RTE.	SECTION	COUNTY	TOTAL SHEETS	SHEET NO.			
PLOT SCALE = 100.0000' / in.	DRAWN -	REVISED -		SCALE:	SHEET	OF	SHEETS	STA.	TO	STA.	* DIST 8 ELECTRICAL 2023-1	6	2
PLOT DATE = 5/10/2022	CHECKED -	REVISED -									**VARIOUS	CONTRACT NO. 76P97	
	DATE -	REVISED -									ILLINOIS FED. AID PROJECT		





**SECTION A-A**

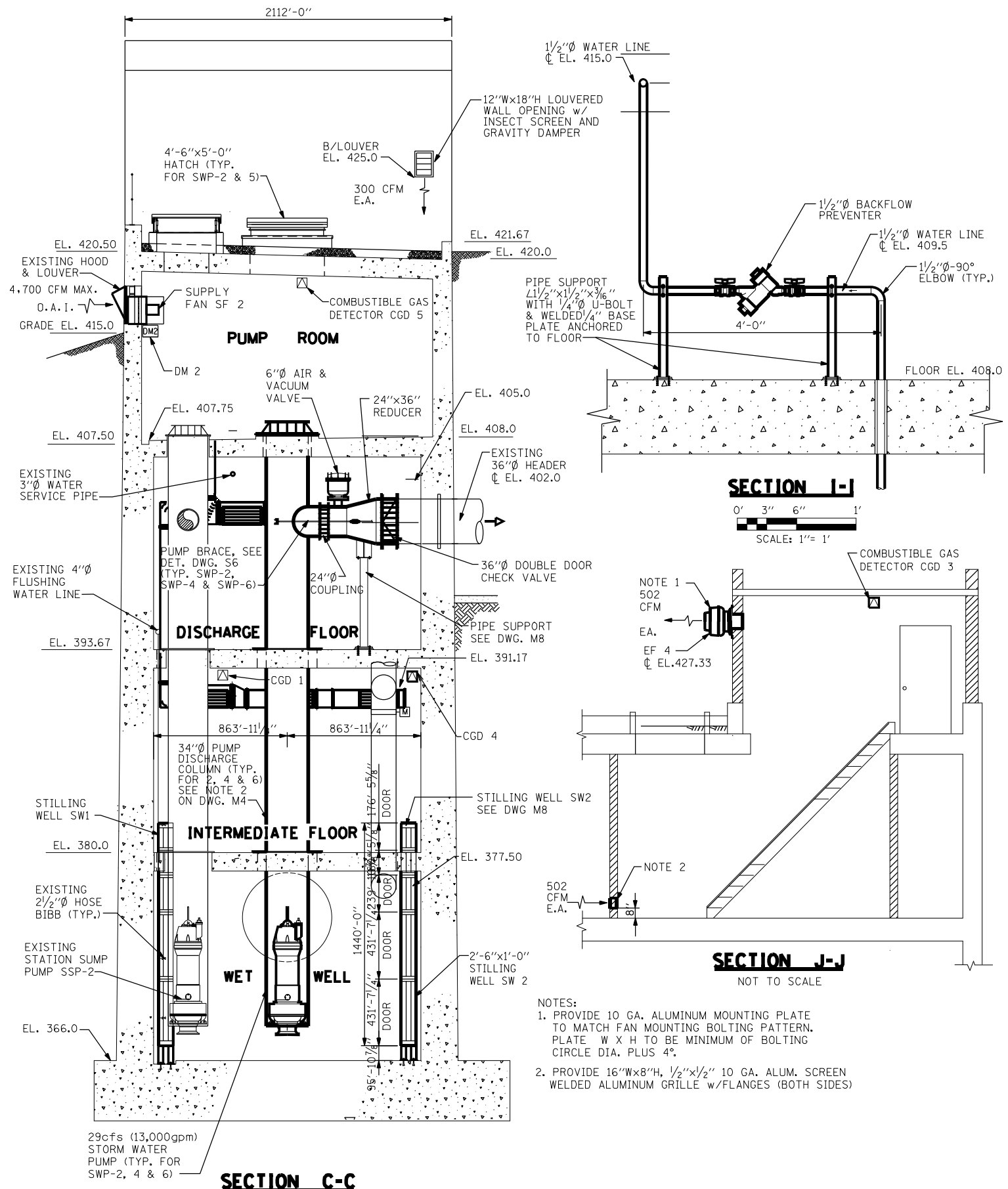
- NOTE:**
- SEE DRAWING M5 FOR ROOF STAIR ACCESS SECTION
  - TUBE PUMP BASE PLATE, COLUMN & DISCHARGE STUB SIZES SHALL BE SIZED TO FIT EXISTING FLOOR OPENING DIMENSIONS WITHOUT INCREASING OPENING SIZE.
  - PROVIDE STAINLESS STEEL HOOKS WITH KELLEM'S CABLE SUPPORTS ON WALLS FOR MIXER CABLES AS REQUIRED.



**FOR INFORMATION ONLY**

MODEL: Default  
 FILE: \\nailes-pw-bentley.com\PWD\DOT\Documents\DOT Office\District 8\Projects\087697\Cadd\Bentley\Electrical\087697\_4lec.dgn

USER NAME = prestonme	DESIGNED -	REVISED -	<b>STATE OF ILLINOIS DEPARTMENT OF TRANSPORTATION</b>	<b>MECHANICAL SECTIONS</b>			F.A. RTE.	SECTION	COUNTY	TOTAL SHEETS	SHEET NO.
PLOT SCALE = 814.7909' / in.	DRAWN -	REVISED -		SCALE:	SHEET	OF SHEETS	STA.	TO STA.	*	6	4
PLOT DATE = 5/10/2022	CHECKED -	REVISED -							**VARIOUS	CONTRACT NO. 76P97	
	DATE -	REVISED -							ILLINOIS	FED. AID PROJECT	



**SECTION I-I**

0' 3" 6" 1'  
SCALE: 1" = 1'

**SECTION J-J**

NOT TO SCALE

- NOTES:
1. PROVIDE 10 GA. ALUMINUM MOUNTING PLATE TO MATCH FAN MOUNTING BOLTING PATTERN. PLATE W X H TO BE MINIMUM OF BOLTING CIRCLE DIA. PLUS 4".
  2. PROVIDE 16"Wx8"H, 1/2"x1/2" 10 GA. ALUM. SCREEN WELDED ALUMINUM GRILLE w/FLANGES (BOTH SIDES)

**SECTION C-C**

**FOR INFORMATION ONLY**

MODEL: Default  
 FILE: M:\MEP - Build\dwg\benefit.com\FW\DOT\Documents\DOT - Offices\District 8\Projects\0876997\CADD\Basis\Electrical\0876997\_4lec.dwg

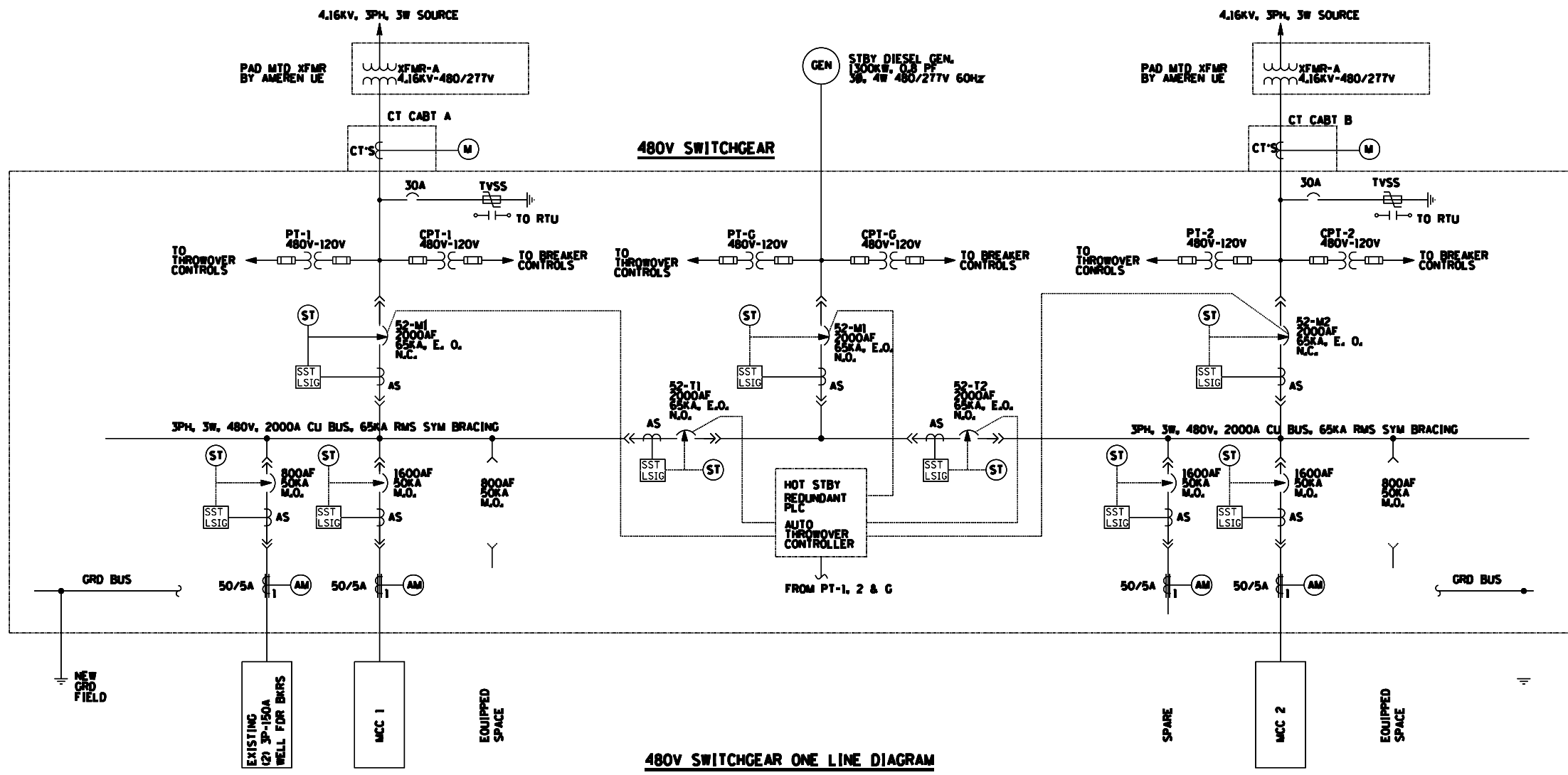
USER NAME = prestonme	DESIGNED -	REVISED -
	DRAWN -	REVISED -
PLOT SCALE = 814.7909' / in.	CHECKED -	REVISED -
PLOT DATE = 5/10/2022	DATE -	REVISED -

**STATE OF ILLINOIS  
DEPARTMENT OF TRANSPORTATION**

**MECHANICAL SECTIONS**

SCALE: SHEET OF SHEETS STA. TO STA.

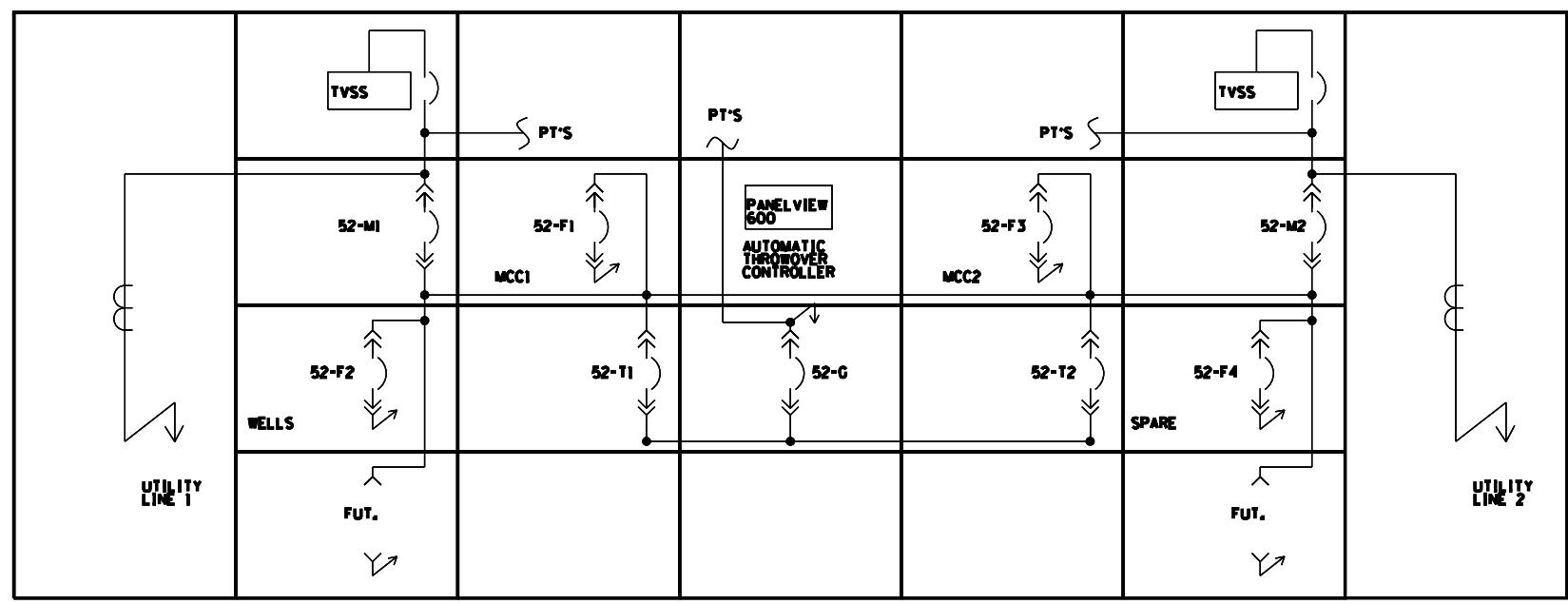
F.A. RTE.	SECTION	COUNTY	TOTAL SHEETS	SHEET NO.
*	DIST 8 ELECTRICAL 2023-1	*	6	5
**VARIOUS			CONTRACT NO. 76P97	
ILLINOIS FED. AID PROJECT				



480V SWITCHGEAR ONE LINE DIAGRAM

- LEGEND:**
- AS CURRENT SENSOR
  - CT CURRENT TRANSFORMER
  - EO ELECTRIC OPERATOR
  - MO MANUALLY OPERATED
  - MCCB MOLDED CASE CIRCUIT BREAKER
  - PT POTENTIAL TRANSFORMER
  - CPT CONTROL POWER TRANSFORMER
  - CLF INDICATES CURRENT LIMITING TYPE
  - ↔ HIGH VOLTAGE CABLE LOAD BREAK CONNECTOR
  - ⊞ FUSE
  - ⊞ DRAW OUT TYPE LOW VOLTAGE POWER CIRCUIT BREAKER WITH BUILT-IN CURRENT SENSOR
  - ⊞ AS SOLID STATE TRIP DEVICE LOWER LETTERS: L - LONG TIME DELAY S - SHORT TIME DELAY I - INSTANTANEOUS G - GROUND FAULT
  - ⊞ (ST) SHUNT TRIP
  - ⊞ (AM) AMMETER

- NOTES:**
1. SPACE SHALL BE PREPARED TO ACCEPT A FUTURE BREAKER.
  2. ALL BREAKERS SHALL HAVE DIGITRIP DT-1150, WITH SYSTEM COMMUNICATION.



480V SWITCHGEAR FRONT ELEVATION

FOR INFORMATION ONLY

MODEL: Default  
 FILE: \\miller-pw-bentley.com\P\W\DOT\Documents\DOT Office\District: 8\Project\087697\CADD\Drawings\Electrical\087697\_4lec.dgn

USER NAME = prestanne	DESIGNED -	REVISED -
DRAWN -	REVISED -	
PLOT SCALE = 814.7909' / in.	CHECKED -	REVISED -
PLOT DATE = 5/10/2022	DATE -	REVISED -

STATE OF ILLINOIS  
DEPARTMENT OF TRANSPORTATION

PUMP STATION SWITCHGEAR ONE	
LINE DIAGRAM & ELEVATION	
SCALE:	SHEET OF SHEETS STA. TO STA.

F.A. RTE.	SECTION	COUNTY	TOTAL SHEETS	SHEET NO.
*	DIST 8 ELECTRICAL 2023-1	*	6	6
**VARIOUS		CONTRACT NO. 76P97		
ILLINOIS		FED. AID PROJECT		