

09-23-2022 LETTING ITEM 058

STATE OF ILLINOIS
DEPARTMENT OF TRANSPORTATION

F.A. RTE.	SECTION	COUNTY	TOTAL SHEETS	SHEET NO.
D1 GRVD INT PVT MRK 22-12		Various	9	1
ILLINOIS CONTRACT NO. 46576				

* 9 + 5 = 14 TOTAL SHEETS

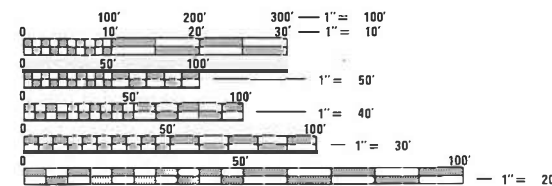
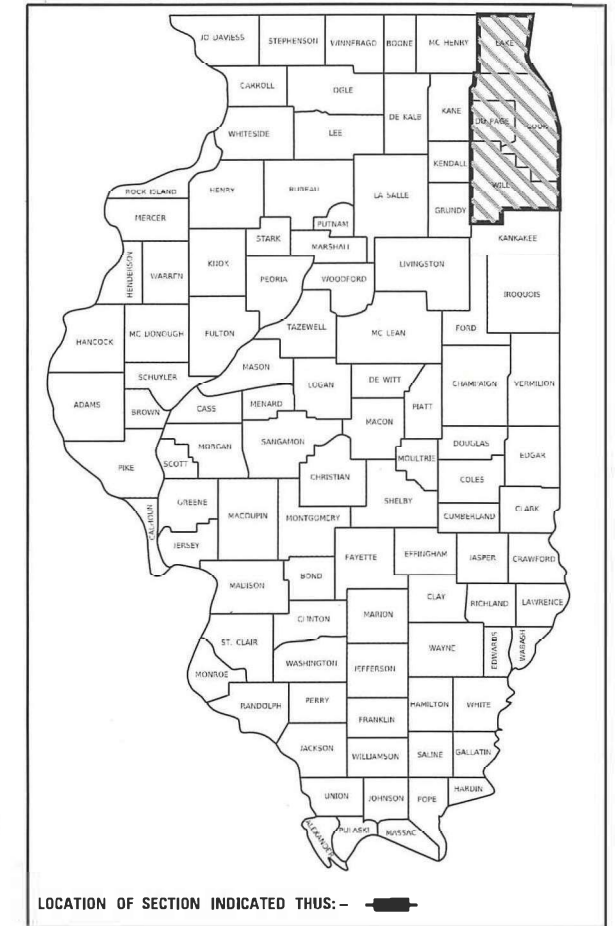
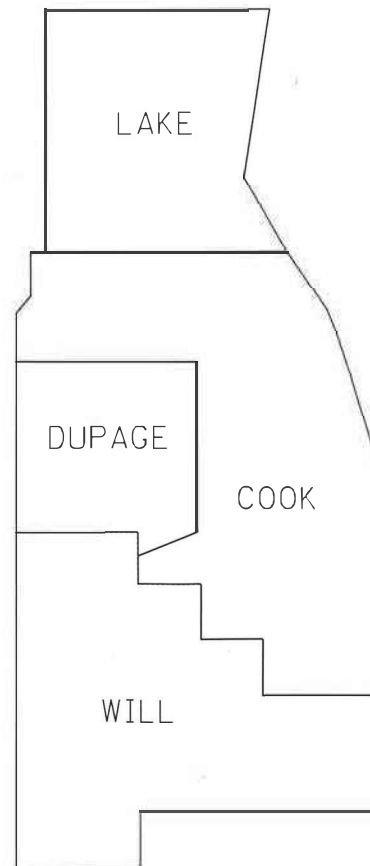
PROPOSED HIGHWAY PLANS

VARIOUS INTERSTATE ROUTES
D1 GRVD INT PVMNT MRK 22-12
DURABLE PAVEMENT MARKING
VARIOUS COUNTY

INDEX OF SHEETS

1. COVER SHEET
2. SUMMARY OF QUANTITIES 1
3. SUMMARY OF QUANTITIES 2
4. SUMMARY OF QUANTITIES 3
5. SUMMARY OF QUANTITIES 4
6. DISTRICT 1 - LAKE COUNTY
7. DISTRICT 1 - COOK COUNTY
8. DISTRICT 1 - DUPAGE COUNTY
9. DISTRICT 1 - WILL COUNTY
- 9a ENTRANCE AND EXIT RAMP CLOSURE DETAILS
- 9b TRAFFIC CONTROL DETAILS FOR FREEWAY SINGLE
- 9c MULTI-LANE FREEWAY PAVEMENT MARKING DETAILS
- 9d MULTI-LANE FREEWAY PAVEMENT MARKING DETAILS
- 9e TRAFFIC CONTROL DETAILS FOR FREEWAY SHOULDER CLOSURES AND PARTIAL RAMP CLOSURES

M-60-012-22



FULL SIZE PLANS HAVE BEEN PREPARED USING STANDARD ENGINEERING SCALES. REDUCED SIZED PLANS WILL NOT CONFORM TO STANDARD SCALES. IN MAKING MEASUREMENTS ON REDUCED PLANS, THE ABOVE SCALES MAY BE USED.

J.U.L.I.E.
JOINT UTILITY LOCATION INFORMATION FOR EXCAVATORS
1-800-892-0123
DR 811

CONTRACT NO. 46576

STATE OF ILLINOIS
DEPARTMENT OF TRANSPORTATION

SUBMITTED APRIL 12 20 22
Jose Rios REGIONAL ENGINEER
July 1, 2022 J.A. Etk
ENGINEER OF DESIGN AND ENVIRONMENT
July 1, 2022 Steph McNeill
DIRECTOR OF HIGHWAYS PROJECT IMPLEMENTATION

PRINTED BY THE AUTHORITY
OF THE STATE OF ILLINOIS

SUMMARY OF QUANTITIES

CODE NO.	ITEM	UNIT	URBAN	
			TOTAL QUANTITY	CONSTRUCTION CODE 100% STATE ROADWAY 0021
78000100	THERMOPLASTIC PAVEMENT MARKING - LETTERS AND SYMBOLS	SQ FT	5,000	5,000
78000200	THERMOPLASTIC PAVEMENT MARKING - LINE 4"	FOOT	100,000	100,000
78000300	THERMOPLASTIC PAVEMENT MARKING - LINE 5"	FOOT	20,000	20,000
78000400	THERMOPLASTIC PAVEMENT MARKING - LINE 6"	FOOT	5,000	5,000
78000500	THERMOPLASTIC PAVEMENT MARKING - LINE 8"	FOOT	50,000	50,000
78000600	THERMOPLASTIC PAVEMENT MARKING - LINE 12"	FOOT	15,000	15,000
78000620	THERMOPLASTIC PAVEMENT MARKING - LINE 18"	FOOT	100	100
78000650	THERMOPLASTIC PAVEMENT MARKING - LINE 24"	FOOT	1,000	1,000
78004600	PREFORMED PLASTIC PAVEMENT MARKING, TYPE D - LETTERS AND SYMBOLS	SQ FT	5,000	5,000
78004620	PREFORMED PLASTIC PAVEMENT MARKING, TYPE D - LINE 4"	FOOT	1,000	1,000
78004625	PREFORMED PLASTIC PAVEMENT MARKING, TYPE D - LINE 5"	FOOT	5,000	5,000
78004630	PREFORMED PLASTIC PAVEMENT MARKING, TYPE D - LINE 6"	FOOT	5,000	5,000
78004635	PREFORMED PLASTIC PAVEMENT MARKING, TYPE D - LINE 7"	FOOT	1,000	1,000
78004640	PREFORMED PLASTIC PAVEMENT MARKING, TYPE D - LINE 8"	FOOT	150,000	150,000
78004645	PREFORMED PLASTIC PAVEMENT MARKING, TYPE D - LINE 9"	FOOT	10,000	10,000

MODEL: D:\DWG\11-2022\11-2022\11-2022\CoverSheets for Contracts.dgn

USER NAME = GONZALEZDIR	DESIGNED -	REVISED -
PLOT SCALE = 109.0855' / In.	DRAWN -	REVISED -
PLOT DATE = 4/7/2022	CHECKED -	REVISED -
	DATE -	REVISED -

**STATE OF ILLINOIS
DEPARTMENT OF TRANSPORTATION**

SUMMARY OF QUANTITIES 1

SCALE: SHEET 2 OF 9 SHEETS STA. TO STA.

F.A. RTE.	SECTION	COUNTY	TOTAL SHEETS	SHEET NO.
	D1 GRVD INT Pvc MRK 22-12	VARIOUS	9	2
CONTRACT NO. 46576				
ILLINOIS FED. AID PROJECT				

SUMMARY OF QUANTITIES

CODE NO.	ITEM	UNIT	URBAN	
			TOTAL QUANTITY	100% STATE ROADWAY 0021
78009012	MODIFIED URETHANE PAVEMENT MARKING - LINE 12"	FOOT	25,000	25,000
78009018	MODIFIED URETHANE PAVEMENT MARKING - LINE 18"	FOOT	100	100
78009024	MODIFIED URETHANE PAVEMENT MARKING - LINE 24"	FOOT	2,000	2,000
78011000	GROOVING FOR RECESSED PAVEMENT MARKING, LETTERS AND SYMBOLS	SQ FT	10,000	10,000
78011025	GROOVING FOR RECESSED PAVEMENT MARKING 5"	FOOT	50,000	50,000
78011030	GROOVING FOR RECESSED PAVEMENT MARKING 6"	FOOT	50,000	50,000
78011035	GROOVING FOR RECESSED PAVEMENT MARKING 7"	FOOT	10,000	10,000
78011040	GROOVING FOR RECESSED PAVEMENT MARKING 8"	FOOT	1,000	1,000
78011045	GROOVING FOR RECESSED PAVEMENT MARKING 9"	FOOT	175,000	175,000
78011050	GROOVING FOR RECESSED PAVEMENT MARKING 10"	FOOT	10,000	10,000
78011065	GROOVING FOR RECESSED PAVEMENT MARKING 13"	FOOT	10,000	10,000
78011095	GROOVING FOR RECESSED PAVEMENT MARKING 19"	FOOT	100	100
78011125	GROOVING FOR RECESSED PAVEMENT MARKING 25"	FOOT	2,000	2,000
78300201	PAVEMENT MARKING REMOVAL - GRINDING	SQ FT	100,000	100,000
78300202	PAVEMENT MARKING REMOVAL - WATER BLASTING	SQ FT	100,000	100,000

MODEL: Default
 FILE NAME: S:\SIS\Contract\CAD\DrawSheets\for_Contracts.dgn

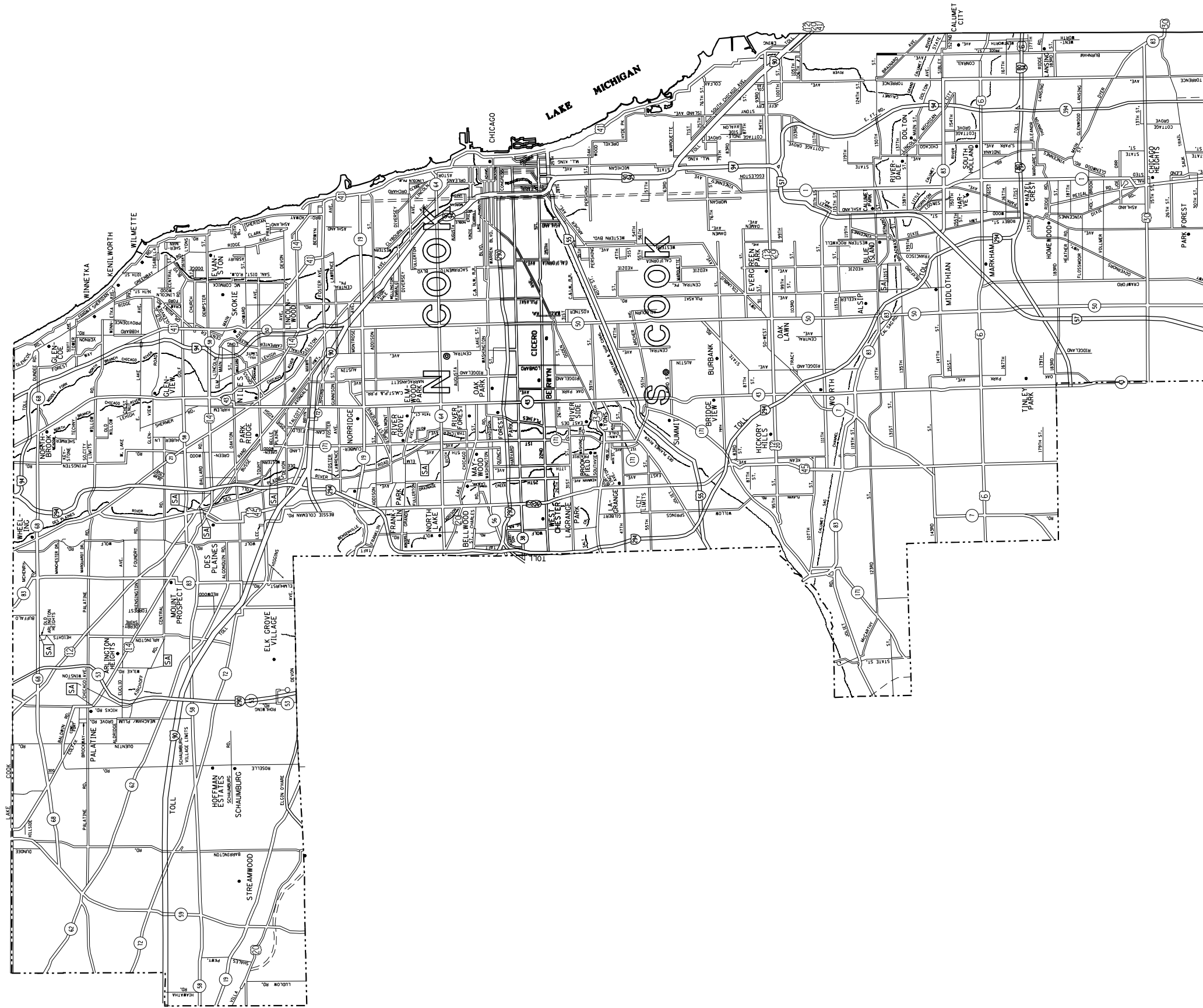
USER NAME = GONZALEZDIR	DESIGNED -	REVISED -
	DRAWN -	REVISED -
PLOT SCALE = 107,5159 1/4" IN.	CHECKED -	REVISED -
PLOT DATE = 4/8/2022	DATE -	REVISED -

**STATE OF ILLINOIS
DEPARTMENT OF TRANSPORTATION**

SUMMARY OF QUANTITIES 3

SCALE: SHEET 4 OF 9 SHEETS STA. TO STA.

F.A. RTE.	SECTION	COUNTY	TOTAL SHEETS	SHEET NO.
	D1 GRVD INT Pvt MRK 22-12	VARIOUS	9	4
CONTRACT NO. 46576				
ILLINOIS FED. AID PROJECT				



MODEL: D:\m\h
 FILE NAME: S:\Contract\CA\DC\CoverSheets for Contract.scp

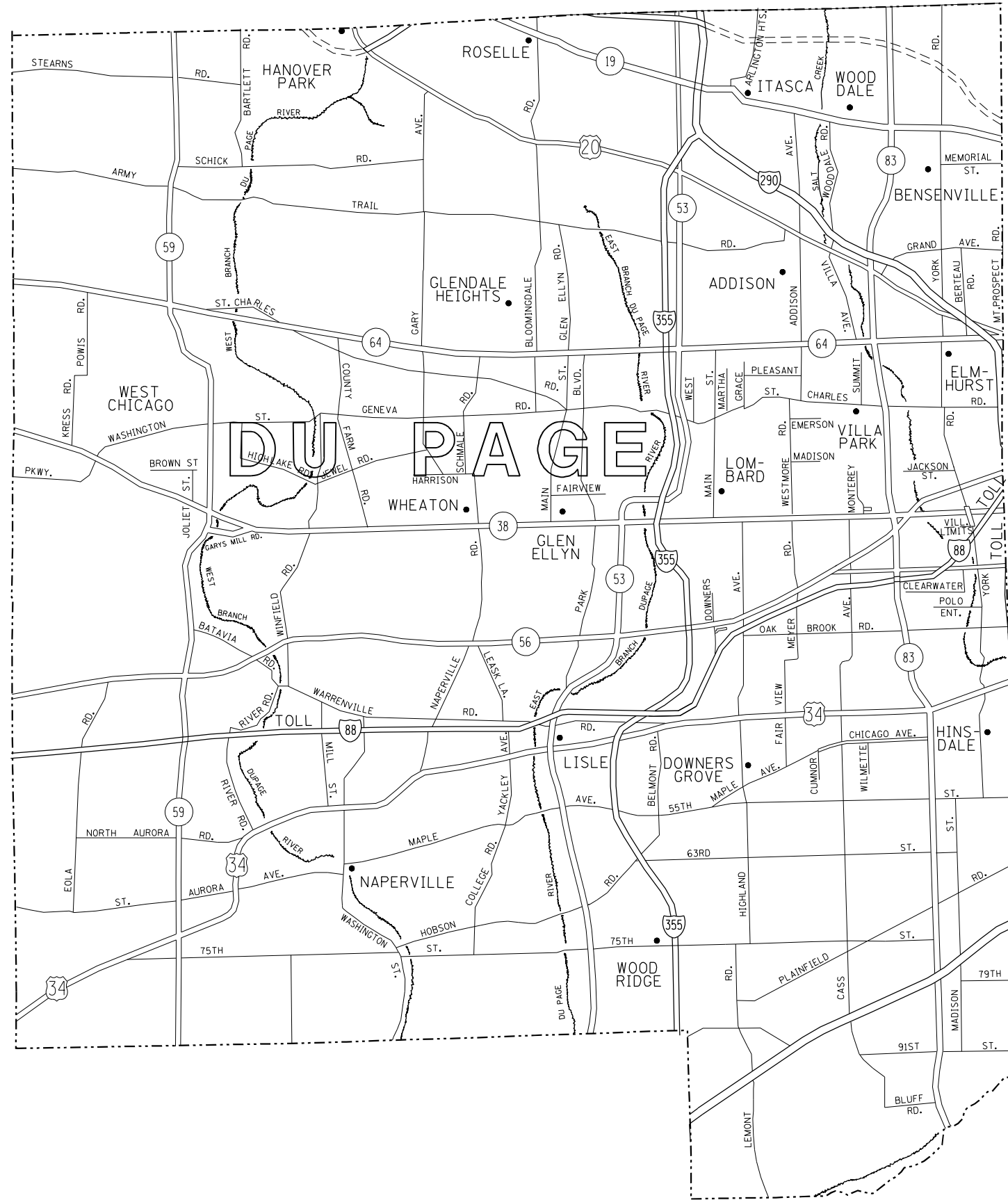
USER NAME = GONZALEZDJR	DESIGNED -	REVISED -
PLOT SCALE = 104.9373' / in.	DRAWN -	REVISED -
PLOT DATE = 4/6/2022	CHECKED -	REVISED -
	DATE -	REVISED -

**STATE OF ILLINOIS
 DEPARTMENT OF TRANSPORTATION**

DISTRICT 1 - COOK COUNTY

SCALE: SHEET 7 OF 9 SHEETS STA. TO STA.

F.A. RTE.	SECTION	COUNTY	TOTAL SHEETS	SHEET NO.
	D1 GRVD INT Pvl MRK 22-12	VARIOUS	9	7
CONTRACT NO. 46576				
ILLINOIS FED. AID PROJECT				



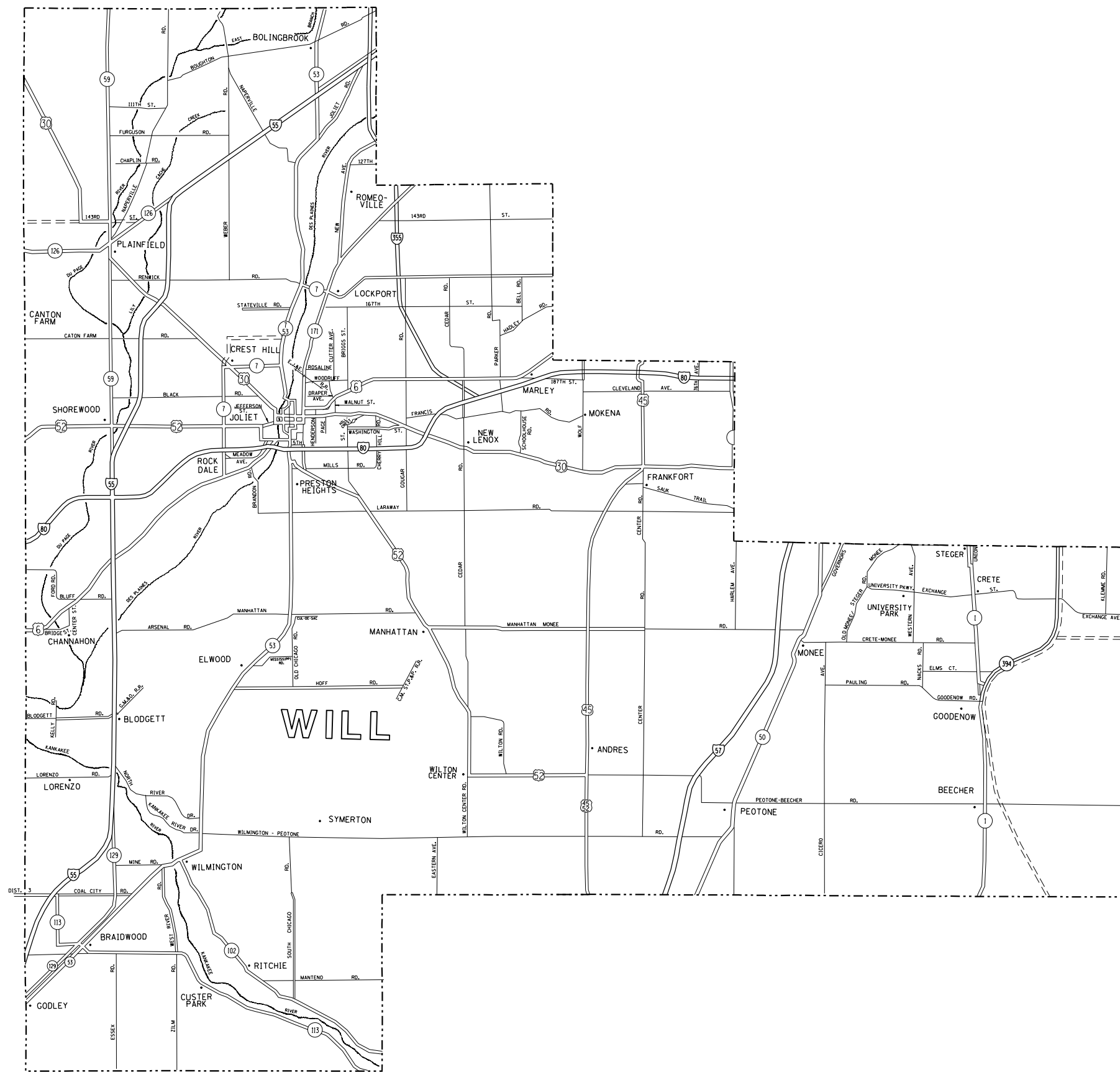
MODEL: Default
 FILE NAME: S:\GIS\Contractor\CAD\CoverSheets for Contractors.dgn

USER NAME = GONZALEZDIR	DESIGNED -	REVISED -
	DRAWN -	REVISED -
PLOT SCALE = 104.9373' / in.	CHECKED -	REVISED -
PLOT DATE = 4/6/2022	DATE -	REVISED -

STATE OF ILLINOIS
DEPARTMENT OF TRANSPORTATION

DISTRICT 1 - DUPAGE COUNTY
 SCALE: SHEET 8 OF 9 SHEETS STA. TO STA.

F.A. RTE.	SECTION	COUNTY	TOTAL SHEETS	SHEET NO.
D1 GRVD INT Pvt MRK 22-12		VARIOUS	9	8
CONTRACT NO. 46576				
ILLINOIS FED. AID PROJECT				



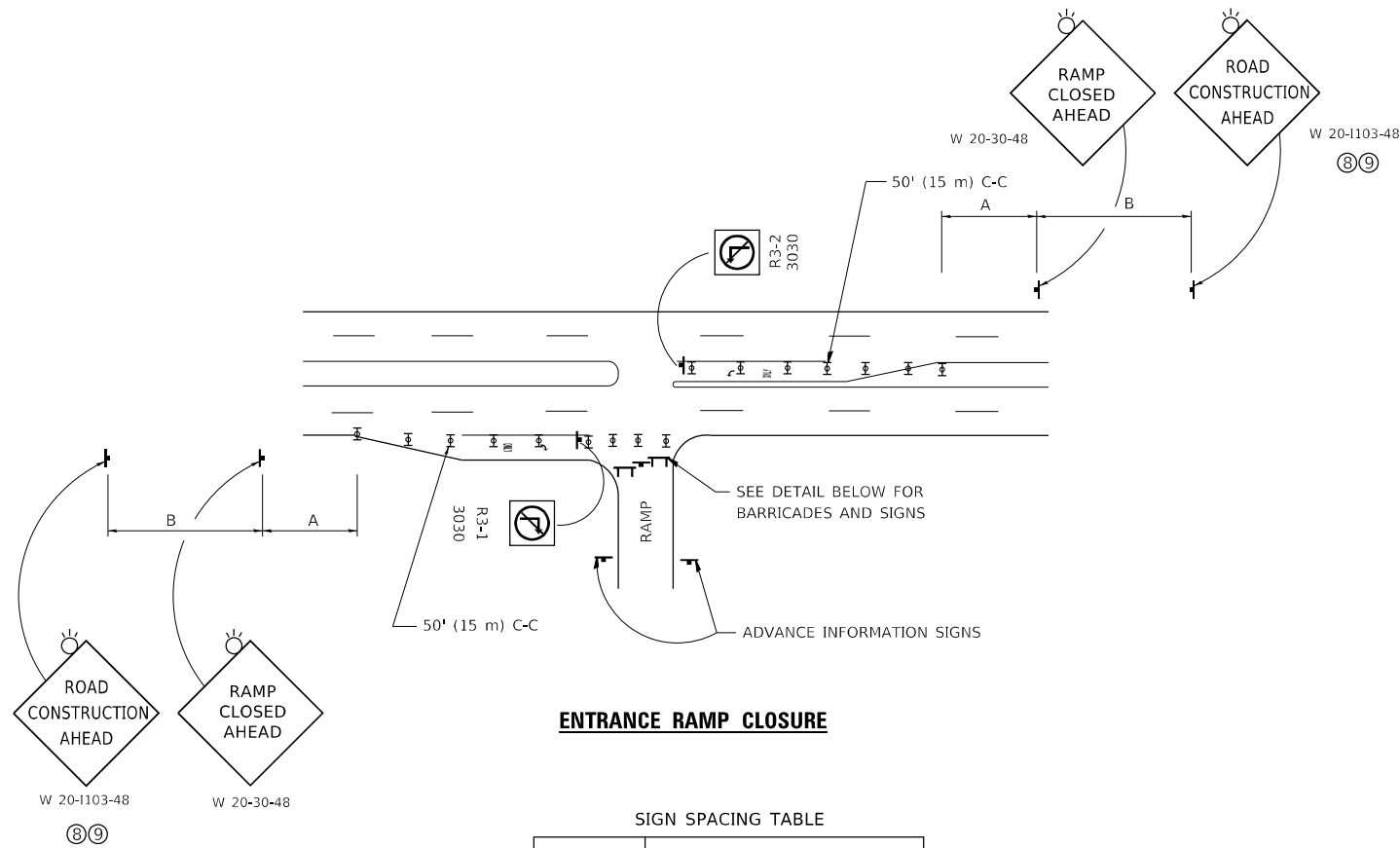
MODEL: Definit
 FILE NAME: S:\S\Contract\CAD\DrawSheets for Contract.dwg

USER NAME = GONZALEZDJR	DESIGNED -	REVISED -
PLOT SCALE = 104.9373' / in.	DRAWN -	REVISED -
PLOT DATE = 4/6/2022	CHECKED -	REVISED -
	DATE -	REVISED -

STATE OF ILLINOIS
DEPARTMENT OF TRANSPORTATION

DISTRICT 1 - WILL COUNTY		
SCALE:	SHEET 9 OF 9 SHEETS	STA. TO STA.

F.A. RTE.	SECTION	COUNTY	TOTAL SHEETS	SHEET NO.
	D1 GRVD INT Pvt MRK 22-12	VARIOUS	9	9
CONTRACT NO. 46576				
ILLINOIS FED. AID PROJECT				

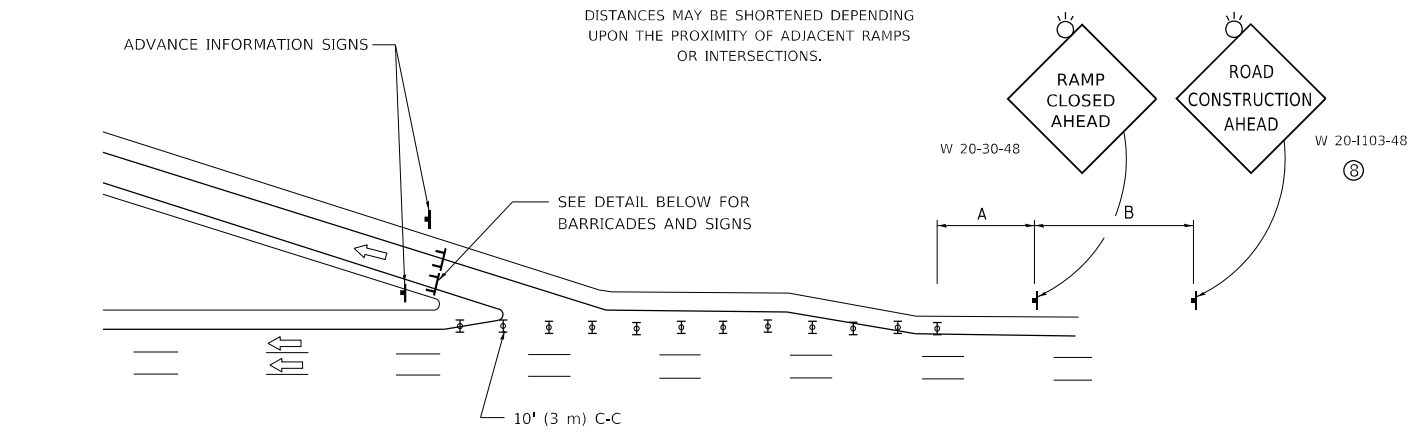


ENTRANCE RAMP CLOSURE

SIGN SPACING TABLE

FACILITY	DISTANCE BETWEEN SIGNS	
	A	B
EXPRESSWAY >24 HOURS	1000' (300 m)	1500' (450 m)
EXPRESSWAY ≤24 HOURS	500' (150 m)	500' (150 m)
ARTERIAL 55 MPH	500' (150 m)	500' (150 m)
ARTERIAL 50-45 MPH	350' (100 m)	350' (100 m)
ARTERIAL <45 MPH	200' (60 m)	200' (60 m)

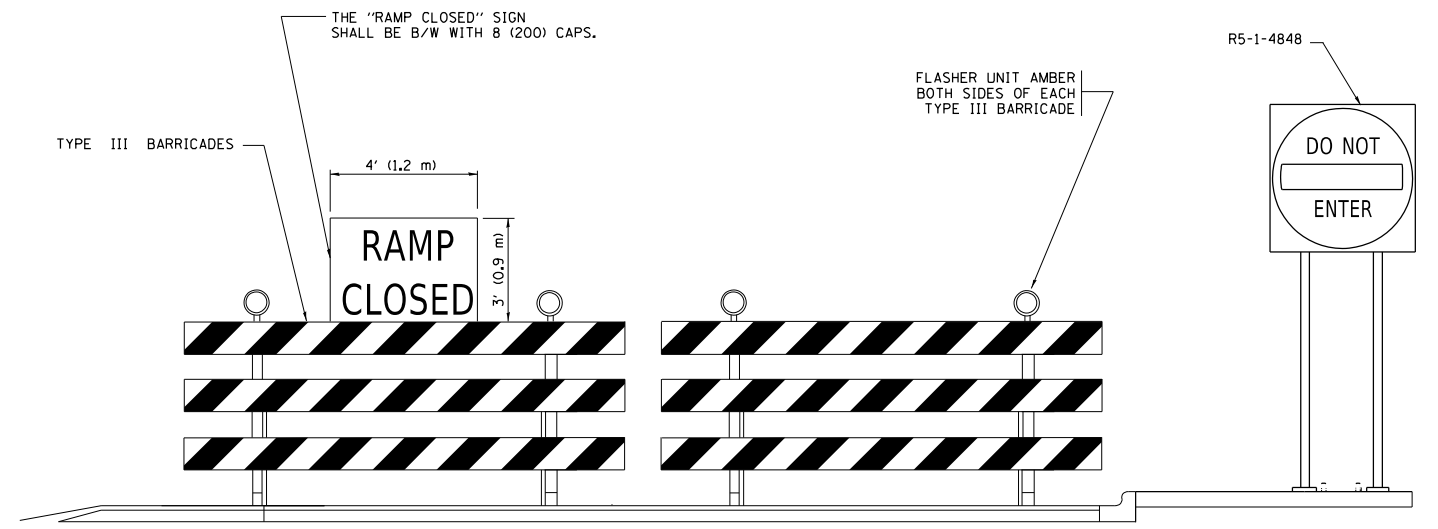
DISTANCES MAY BE SHORTENED DEPENDING UPON THE PROXIMITY OF ADJACENT RAMPS OR INTERSECTIONS.



EXIT RAMP CLOSURE

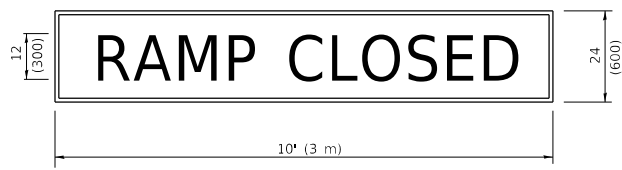
SYMBOLS

- ☐ TYPE II BARRICADE OR DRUM
- ☐ TYPE III BARRICADE WITH 2 FLASHING LIGHTS



DETAIL FOR REQUIRED BARRICADES & SIGNS

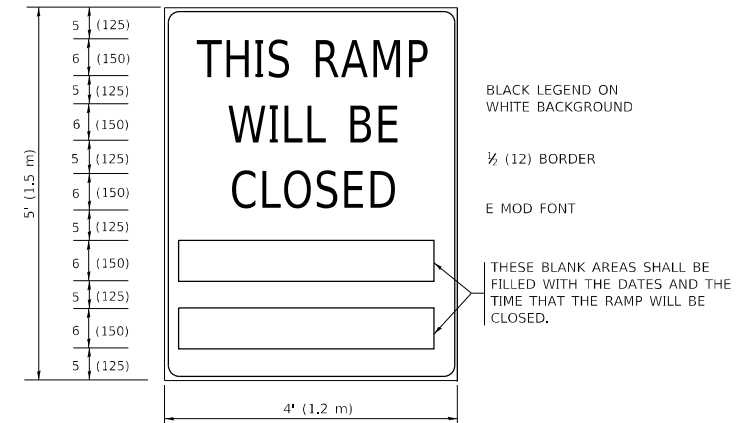
RAMP CLOSURE ADVANCE WARNING SIGN



BLACK LEGEND ON ORANGE BACKGROUND MOUNTED DIAGONALLY
E MOD FONT
1 (25) BORDER

THESE SIGNS ARE REQUIRED ON ALL THE EXIT GUIDE SIGNS FOR EXIT RAMPS THAT WILL BE CLOSED FOR MORE THAN FOUR (4) CONSECUTIVE DAYS.

RAMP CLOSURE ADVANCE INFORMATION SIGN



BLACK LEGEND ON WHITE BACKGROUND

1/2 (12) BORDER

E MOD FONT

THESE BLANK AREAS SHALL BE FILLED WITH THE DATES AND THE TIME THAT THE RAMP WILL BE CLOSED.

THESE SIGNS ARE REQUIRED ON BOTH SIDES OF THE RAMP, MINIMUM OF 1 WEEK IN ADVANCE OF THE CLOSURE.

THESE SIGNS SHALL BE FABRICATED AND PAID FOR ACCORDING TO THE TEMPORARY INFORMATION SIGNING SPECIAL PROVISION

GENERAL NOTES:

- ① CONES MAY BE SUBSTITUTED FOR DRUMS OR TYPE II BARRICADES DURING DAY OPERATIONS. CONES SHALL BE A MINIMUM OF 28 (700) HIGH.
- ② VERTICAL BARRICADES SHALL NOT BE USED FOR RAMP CLOSURES.
- ③ A FLAGGER SHALL BE POSITIONED AT EACH CLOSED RAMP THAT IS OPEN TO CONSTRUCTION VEHICLES, PRECEDED BY A W20-7 FLAGGER WARNING SIGN.
- ④ ALL ROUTE MARKERS AND TRAILBLAZER ASSEMBLIES WHICH DIRECT MOTORISTS TO A CLOSED ENTRANCE RAMP SHALL BE COVERED WHEN THE RAMP IS CLOSED FOR MORE THAN FOUR (4) DAYS.
- ⑤ THE SIGNING AND BARRICADING WHICH IS REQUIRED BY THIS DETAIL SHALL BE INCLUDED IN THE COST OF TRAFFIC CONTROL AND PROTECTION (EXPRESSWAYS).
- ⑥ AUTHORIZATION FROM THE DISTRICT'S BUREAU OF TRAFFIC IS REQUIRED FOR ALL RAMP CLOSURES.
- ⑦ THE RAMP CLOSURE ADVANCE INFORMATION SIGNS SHALL BE ERECTED IF THE CLOSURE TIME EXCEEDS TWENTY-FOUR (24) HOURS. ADDITIONAL ADVANCE WARNING SIGNS ON EXIT GUIDE SIGNING WILL BE REQUIRED FOR EXIT RAMP CLOSURES THAT EXCEED FOUR (4) DAYS IN LENGTH.
- ⑧ ROAD CONSTRUCTION AHEAD SIGNS MAY BE OMITTED WHEN THIS DETAIL IS USED IN CONJUNCTION WITH OTHER TRAFFIC CONTROL THAT ALREADY INCLUDES A ROAD CONSTRUCTION AHEAD SIGN.
- ⑨ ARTERIAL ROAD CONSTRUCTION AHEAD SIGNS SHALL BE INSTALLED ON THE LEFT SIDE OF TRAFFIC IF THE MEDIAN IS MORE THAN 10 FT WIDE.

ALL DIMENSIONS ARE IN INCHES (MILLIMETERS) UNLESS OTHERWISE SHOWN.

MODEL: D:\draft... FILE NAME: ...

USER NAME = footemj	DESIGNED - D.W.S.	REVISED - S.P.B._01-07
PLOT SCALE = 50.0000 ' / in.	CHECKED -	REVISED - S.P.B._12-09
PLOT DATE = 3/4/2019	DATE - 02-83	REVISED - M.D._06-13
		REVISED - M.D._01-18

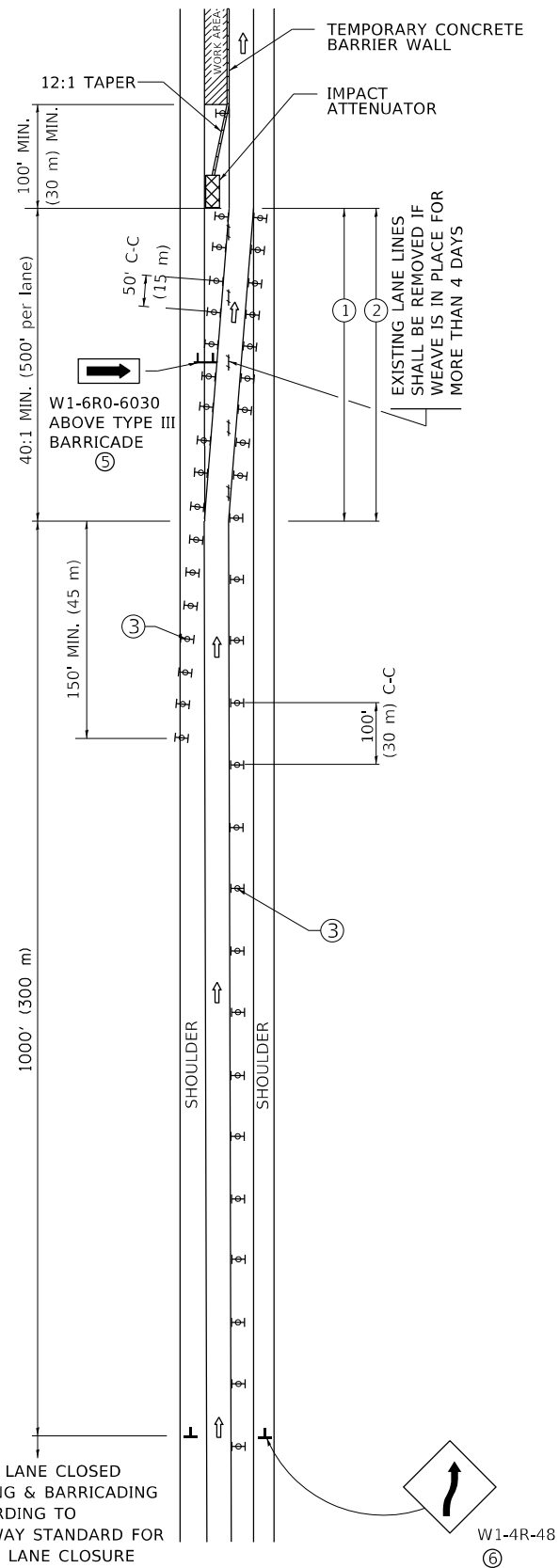
STATE OF ILLINOIS DEPARTMENT OF TRANSPORTATION

ENTRANCE_AND_EXIT_RAMP CLOSURE_DETAILS

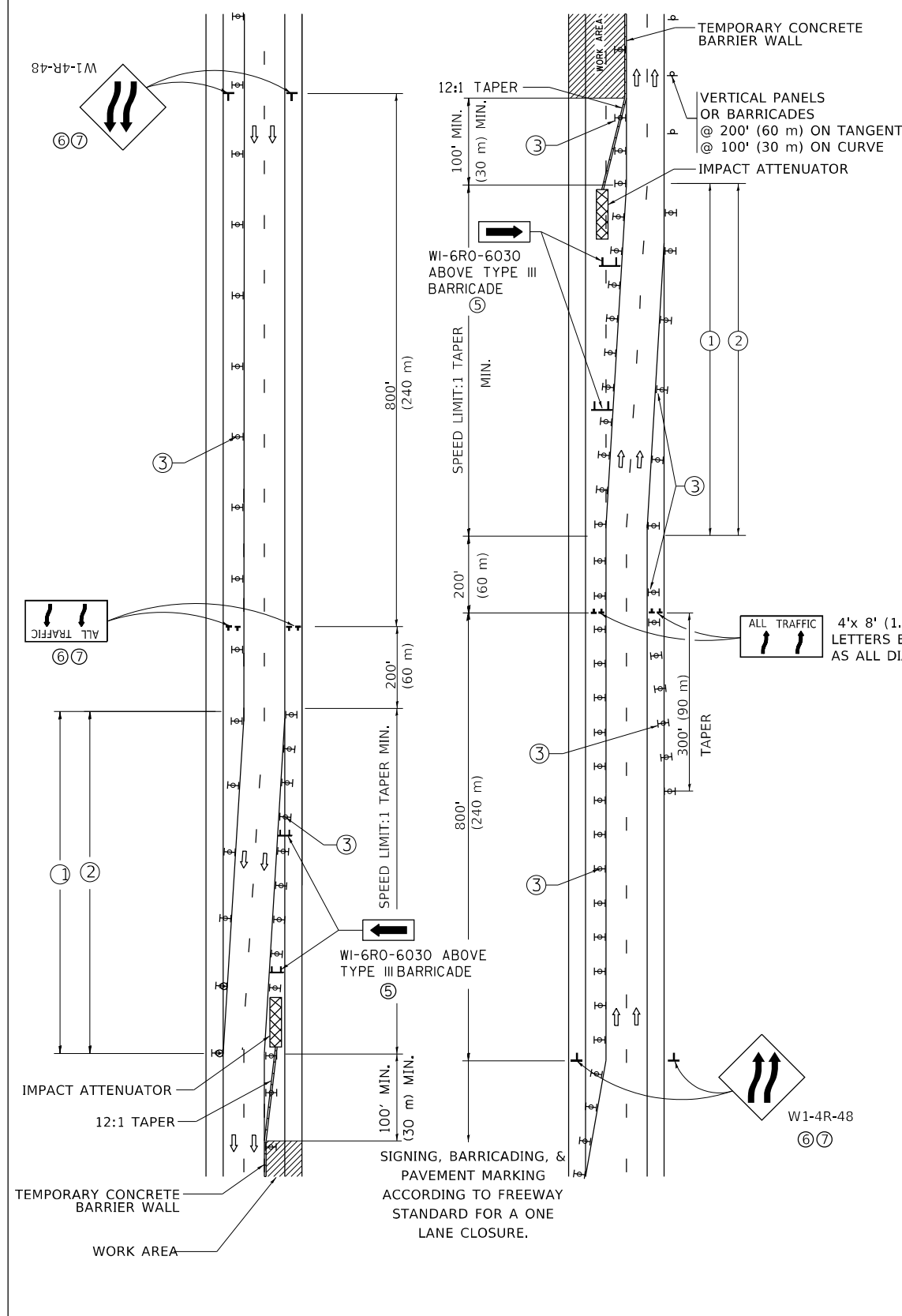
SCALE: NONE SHEET 1 OF 1 SHEETS STA. TO STA.

F.A. RTE.	SECTION	COUNTY	TOTAL SHEETS	SHEET NO.
TC-08			CONTRACT NO.	
ILLINOIS FED. AID PROJECT				

SINGLE LANE WEAVE

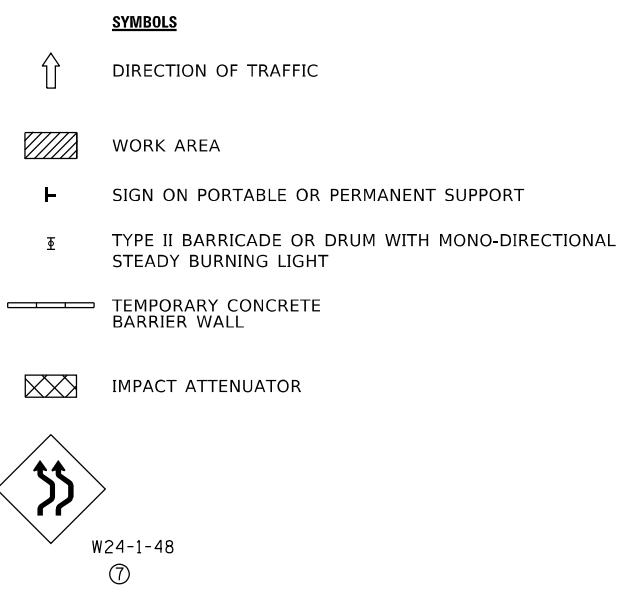


MULTI-LANE WEAVE



GENERAL NOTES:

- ① EXISTING CONFLICTING PAVEMENT MARKING LINES SHALL BE REMOVED. PAVEMENT MARKING REMOVAL SHALL NOT BE REQUIRED FOR SINGLE LANE WEAVES UNDER 4 DAYS IN DURATION.
- ② CONTINUOUS REFLECTIVE TEMPORARY PAVEMENT MARKING TAPE SHALL BE PLACED THROUGHOUT THE TAPER AND FOR 300' (90 m) ALONG SIDE THE WORK AREA WHERE THE CLOSURE TIME IS GREATER THAN FOURTEEN DAYS. THE LEFT EDGE LINE SHALL BE YELLOW AND THE RIGHT EDGE LINE SHALL BE WHITE. FOR MULTI-LANE WEAVES LANE LINES SHALL BE 5 INCH, 10'-30' (3 m-9 m) SKIP DASH, WHITE.
- ③ PLASTIC DRUMS WITH STEADY BURN LIGHTS AT 50' (15 m) C-C SPACING IN TAPERS AND 100' (30 m) C-C SPACING IN TANGENTS.
- ④ ALL SIGNS SHALL BE POST MOUNTED IF THE CLOSURE TIME EXCEEDS FOUR DAYS.
- ⑤ TYPE III BARRICADES MAY BE OMITTED FOR SINGLE-LANE WEAVES UNDER 24-HOURS IN DURATION. W1-6 SIGNS WILL STILL BE REQUIRED. IF THE WIDTH OF OFFSET IS LESS THAN 6' THEN THE TYPE III BARRICADE WITH ATTACHED ARROW SIGN PANEL CAN BE ELIMINATED IN THE TAPER AREAS.
- ⑥ WHEN THE LENGTH OF THE SHIFTED SEGMENT (DISTANCE BETWEEN WEAVE POINTS) IS LESS THAN 1500', DOUBLE REVERSE CURVE SIGNS (W24-1) SHOULD BE USED INSTEAD OF THE REVERSE CURVE (W1-4) SIGNS. ARROWS ON THE 4'X8' "ALL TRAFFIC" SIGNS SHALL BE THE SAME SHAPE.
- ⑦ THE NUMBER OF ARROWS ON THESE SIGNS SHALL MATCH THE NUMBER OF LANES OPEN TO TRAFFIC.



ALL DIMENSIONS ARE IN INCHES (MILLIMETERS) UNLESS OTHERWISE SHOWN

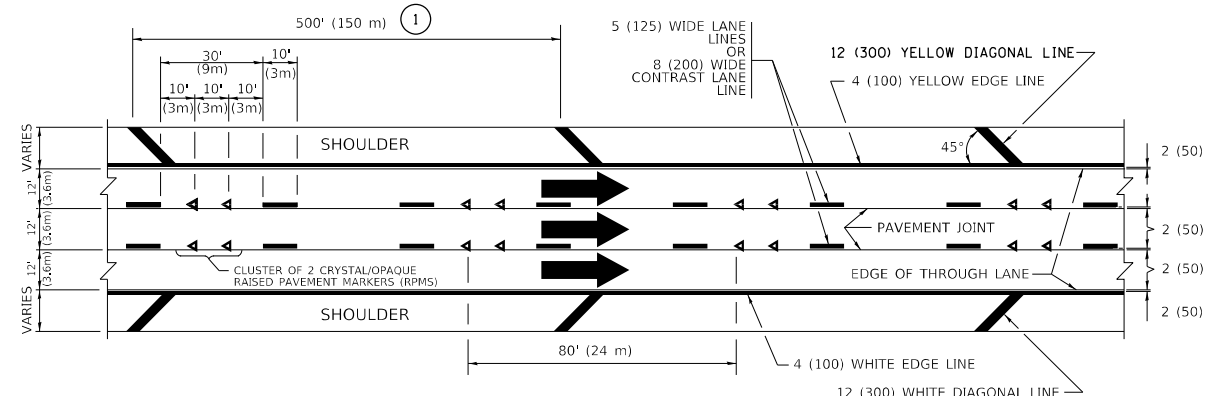
MODEL: D:\draft\... FILE NAME: ... PROJECTS\DOT\Documents\DOT Offices\District 1\Projects\DOT\5422-234\CADData\CAD\sheet\TC09.dgn

USER NAME = footemj	DESIGNED - D.W.S.	REVISED - J.A.F. 02-06
	DRAWN -	REVISED - S.P.B. 01-07
PLOT SCALE = 50,0000 ' / in.	CHECKED -	REVISED - S.P.B. 12-09
PLOT DATE = 3/4/2019	DATE - 02-87	REVISED - M.D. 06-13

**STATE OF ILLINOIS
DEPARTMENT OF TRANSPORTATION**

TRAFFIC CONTROL DETAILS FOR FREEWAY SINGLE & MULTI-LANE WEAVE			
SCALE: NONE	SHEET 1	OF 1 SHEETS	STA. TO STA.

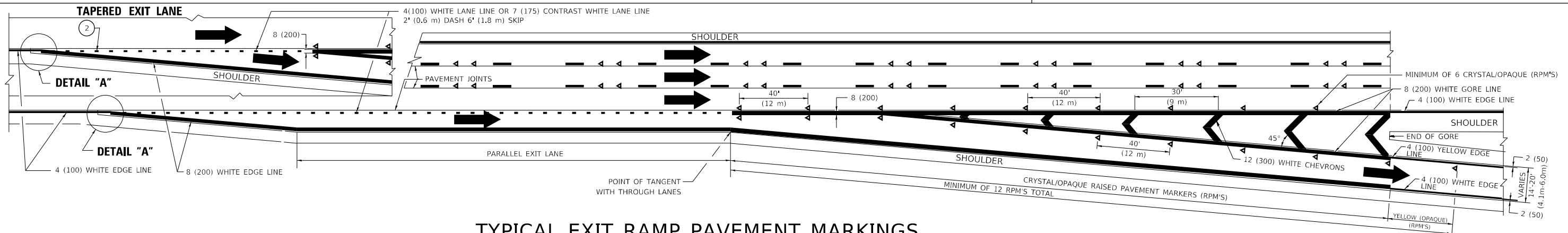
F.A. RTE.	SECTION	COUNTY	TOTAL SHEETS	SHEET NO.
	TC-09			
ILLINOIS			CONTRACT NO.	
FED. AID PROJECT				



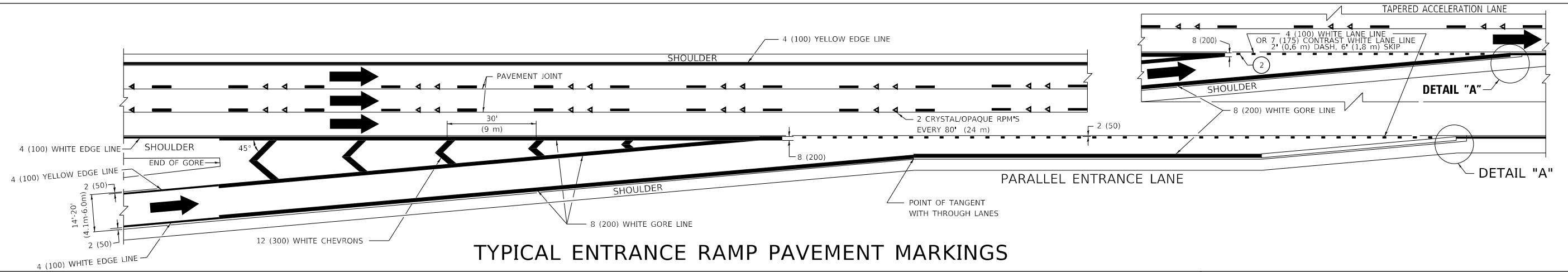
TYPICAL EDGE LINES & LANE LINES

PAVEMENT MARKING MATERIALS

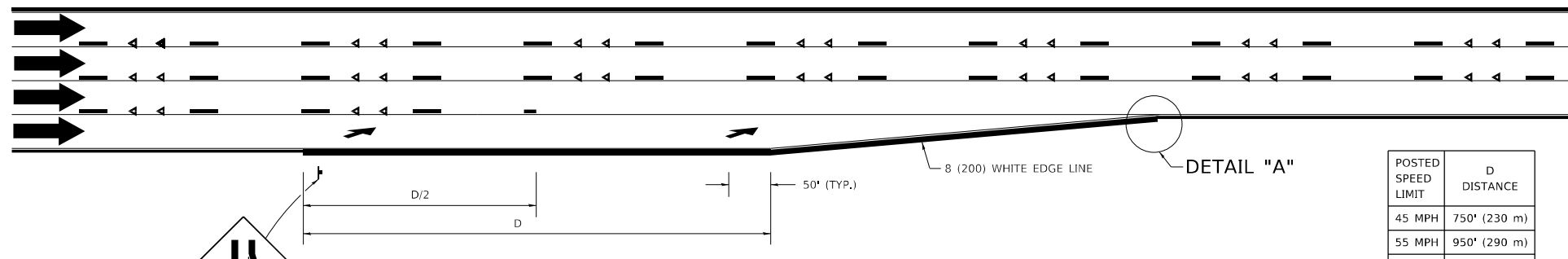
1. THERMOPLASTIC PAVEMENT MARKING LINE SHALL BE USED FOR ALL EDGE LINES, GORE LINES, AND DIAGONAL LINES ON HMA PAVEMENTS.
2. POLYUREA OR MODIFIED URETHANE PAVEMENT MARKING LINE SHALL BE USED FOR ALL EDGE LINES, GORE LINES, AND DIAGONAL LINES ON PCC PAVEMENTS.
3. PREFORMED PLASTIC PAVEMENT MARKING LINE TYPE B, INLAID OR GROOVE IN, SHALL BE USED FOR ALL LANE LINES ON HMA PAVEMENTS.
4. CONTRAST PREFORMED PLASTIC PAVEMENT MARKING LINE TYPE B, GROOVE IN, SHALL BE USED FOR ALL LANE LINES ON PCC PAVEMENT.



TYPICAL EXIT RAMP PAVEMENT MARKINGS

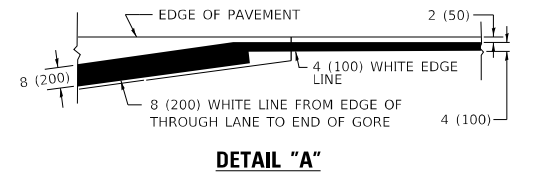


TYPICAL ENTRANCE RAMP PAVEMENT MARKINGS



LANE REDUCTION PAVEMENT MARKINGS

POSTED SPEED LIMIT	D DISTANCE
45 MPH	750' (230 m)
55 MPH	950' (290 m)
65 MPH	1200' (365 m)



NOTES:

- ① THE DIAGONAL LINES SHALL BE SPACED AT 40' (12 m) C-C ACROSS ALL STRUCTURES WHICH ARE 500' (150 m) OR LESS IN LENGTH. THE DIAGONAL LINES ARE NOT REQUIRED ON SHOULDERS WHICH ARE 6' (1.8 m) OR LESS IN WIDTH.
- ② 4" (2' DASH, 6' SKIP) MARKING ON TAPERED ENTRANCE AND EXIT RAMP SHALL BE OMITTED ON TANGENT SECTIONS.

MODEL: D:\draft... FILE NAME: ... PROJECT: ... OFFICE: ...

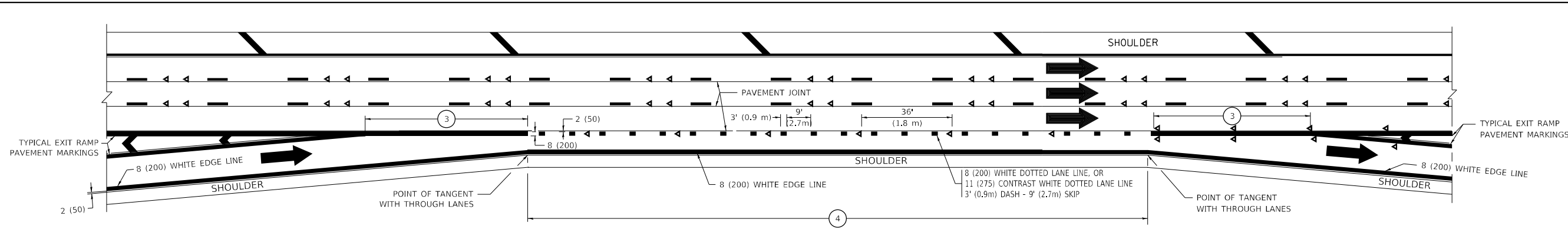
USER NAME = footem	DESIGNED - D.W.S.	REVISED - S.P.B. 01-07
PLOT SCALE = 50.0000 ' / in.	DRAWN -	REVISED - S.P.B. 01-10
PLOT DATE = 3/4/2019	CHECKED -	REVISED - M.D. 05-13
	DATE - 01-90	REVISED - M.D. 09-17

**STATE OF ILLINOIS
DEPARTMENT OF TRANSPORTATION**

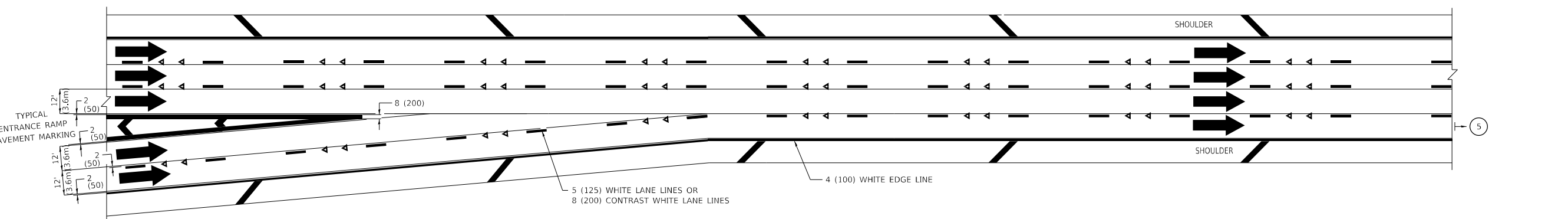
**MULTI-LANE FREEWAY
PAVEMENT MARKING DETAILS**

SCALE: NONE SHEET 1 OF 2 SHEETS STA. TO STA.

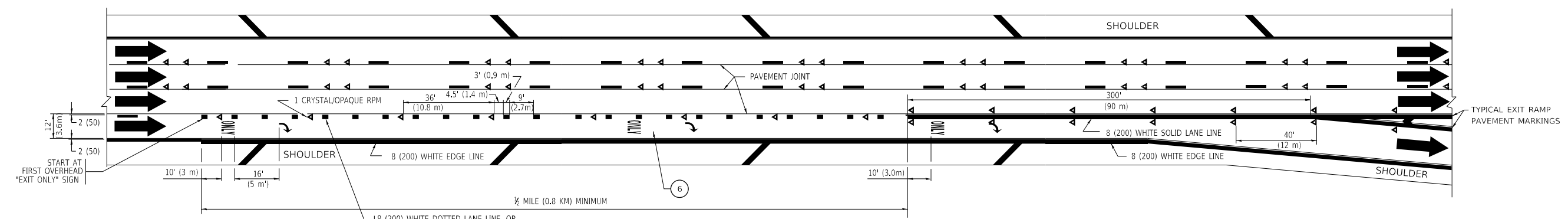
F.A. RTE.	SECTION	COUNTY	TOTAL SHEETS	SHEET NO.
TC-12			CONTRACT NO.	
ILLINOIS		FED. AID PROJECT		



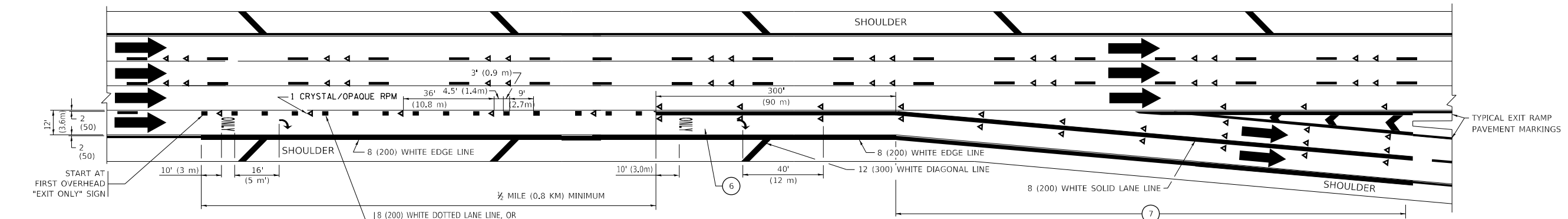
AUXILIARY LANE MARKINGS



TWO LANE ENTRANCE RAMP WITH MERGE MARKINGS



EXIT ONLY LANE MARKINGS



EXIT ONLY WITH OPTION LANE MARKINGS

- NOTES:**
- 3 OMIT WHEN LENGTH OF AUXILIARY LANE IS LESS THAN 500' (150 m).
 - 4 8-INCH WIDE DOTTED LANE LINE MARKINGS SHALL BE USED WHEN THE LENGTH OF THE AUXILIARY LANE IS 2 MILES OR LESS.
 - 5 FOR TWO-LANE ENTRANCE RAMP, IF RIGHT LANE ENDS, USE TYPICAL ENTRANCE RAMP PAVEMENT MARKINGS.
 - 6 ONLY AND ARROWS EQUALLY SPACED, 500' (150 m) MAXIMUM SPACING. FULL SIZE LETTERS AND ARROW SHALL BE USED.
 - 7 CONTINUE 8" SOLID LANE LINE THROUGH EXIT TO END OF PAVED GORE.

MODEL: D:\draft FILE NAME: p:\1108\BID\NITEC Illinois\pov\p\WID\DOT\Documents\DOT Office\Director 1\Projects\DH5422-234\CAD\Drawn\CAD\Sheet\TC12.dgn

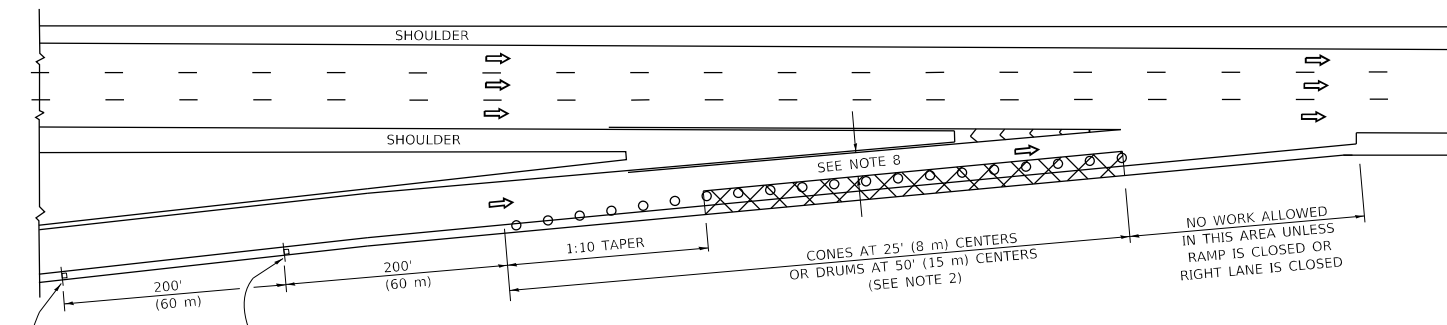
USER NAME = footem	DESIGNED - D.W.S.	REVISED - J.A.F. 02-06
PLOT SCALE = 50.0000 ' / in.	CHECKED -	REVISED - S.P.B. 01-07
PLOT DATE = 3/4/2019	DATE - 01-90	REVISED - S.P.B. 01-10
		REVISED - M.D. 09-17

**STATE OF ILLINOIS
DEPARTMENT OF TRANSPORTATION**

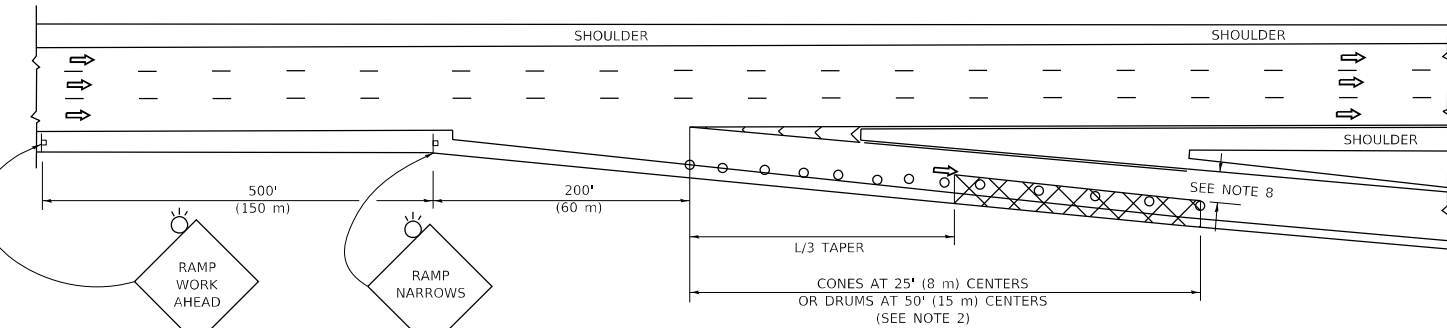
MULTI-LANE FREEWAY PAVEMENT MARKING DETAILS			
SCALE: NONE	SHEET 1	OF 2 SHEETS	STA. TO STA.

F.A. RTE.	SECTION	COUNTY	TOTAL SHEETS	SHEET NO.
TC-12		CONTRACT NO.		
ILLINOIS		FED. AID PROJECT		

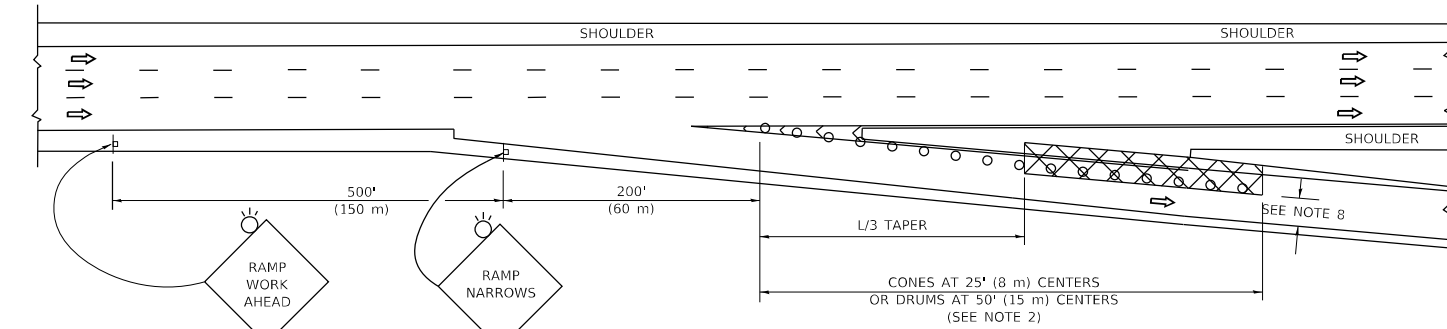
PARTIAL RAMP CLOSURE DETAILS



TYPICAL ENTRANCE RAMP



TYPICAL EXIT RAMP



TYPICAL EXIT RAMP

SYMBOLS

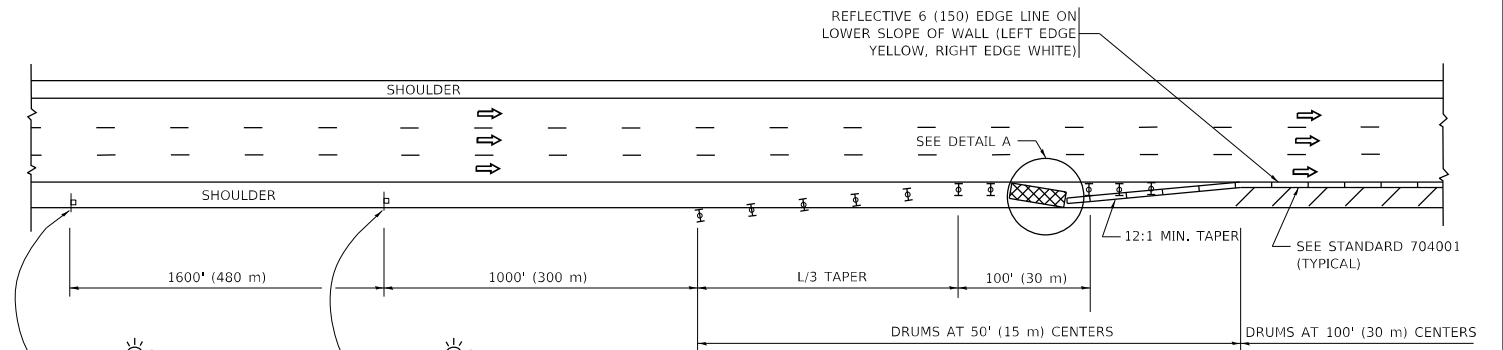
- ACTIVE WORK AREA
- SIGN ON PORTABLE OR PERMANENT SUPPORT
- FLAGGER WITH CONTROL SIGN
- TYPE II BARRICADE OR DRUM
- CONE, DRUM OR BARRICADE
- IMPACT ATTENUATOR OF TYPE AND TEST LEVEL SPECIFIED

GENERAL NOTES:

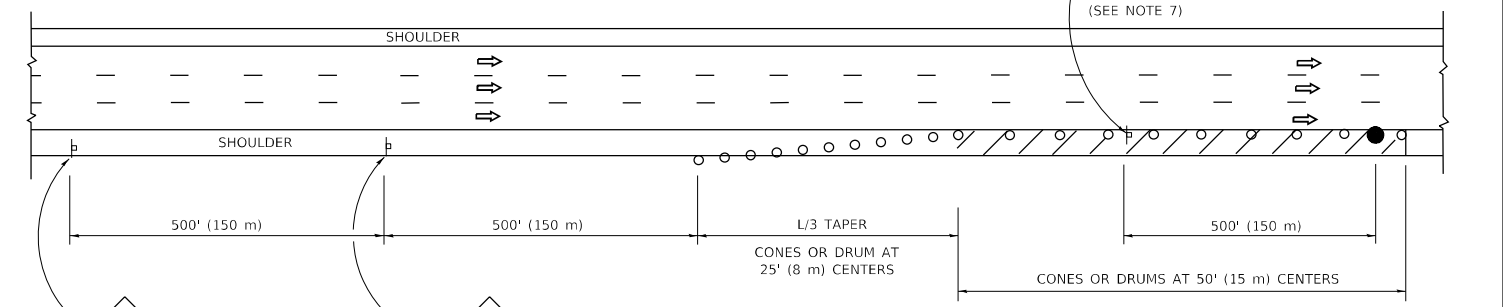
1. THE "L" DISTANCE EQUALS:

SPEED LIMIT	FORMULAS
45 mph (80 km/h) OR GREATER:	METRIC ENGLISH L=0.65(WXS) L=(W)XS
W = WIDTH OF OFFSET IN FEET (METERS)	
S = NORMAL POSTED SPEED MPH (KM/H)	
2. TYPE II BARRICADES OR DRUMS ARE REQUIRED FOR ALL NIGHTTIME CLOSURES. TYPE II BARRICADES OR DRUMS WITH MONODIRECTIONAL STEADY BURN LIGHTS ARE REQUIRED FOR DELINEATING OBSTACLES, EXCAVATIONS, OR HAZARDS EXCEEDING 100 FT (30m) IN LENGTH AT NIGHT.
3. ALL SIGNS SHALL BE POST MOUNTED IF THE CLOSURE TIME EXCEEDS FOUR DAYS.
4. FLASHING LIGHTS SHALL BE USED DURING THE HOURS OF DARKNESS AND SHALL BE INSTALLED ABOVE THE FIRST TWO SETS OF SIGNS.

SHOULDER CLOSURE DETAILS



PERMANENT SHOULDER CLOSURE



DAYTIME SHOULDER CLOSURE

THIS DETAIL IS USED WHERE:

1. VEHICLES, EQUIPMENT, WORKERS OR THEIR ACTIVITIES ENCR OACH IN AN AREA CLOSER THAN 15' (4.5 m) TO THE EDGE OF PAVEMENT FOR A PERIOD IN EXCESS OF 15 MINUTES.



DETAIL "A" IMPACT ATTENUATOR, TEMPORARY (SEE NOTE 5)

5. THE IMPACT ATTENUATOR, TEMPORARY IS NOT REQUIRED WHEN THE TEMPORARY CONCRETE BARRIER WALL IS PROTECTED BY OR IS TIED INTO THE EXISTING GUARDRAIL. IF OFFSET IS LESS THAN 5 FEET USE NARROW USE TYPE DEVICE TO MEET NCHRP350/MASH.
6. AUTHORIZATION FROM THE DISTRICT'S BUREAU OF TRAFFIC IS REQUIRED FOR ALL FREEWAY CLOSURES.
7. THE FLAGGER AND FLAGGER SIGN ARE REQUIRED AT THE ABOVE WORK SITES WHEN:
 - a. FOUR OR MORE WORK VEHICLES ENTER THE TRAFFIC LANES IN A ONE HOUR PERIOD.
 - b. THE WORK AVTIVITY REQUIRES FREQUENT ENCR OACHMENT INTO THE LANE OPEN TO TRAFFIC.
 THE FLAGGER SHALL BE STATIONED APPROXIMATELY 100' (30 m) TO 200' (60 m) IN ADVANCE OF THE WORKERS.
8. 12' MIN. WIDTH TANGENT SECTION
16' MIN. WIDTH CURVE SECTION.

ALL DIMENSIONS ARE IN INCHES (MILLIMETERS) UNLESS OTHERWISE SHOWN.

MODEL: D:\draft... FILE NAME: ... PROJECT: ...

USER NAME = footemj	DESIGNED -	REVISED - S.P.B. 01-07
	DRAWN - D.W.S.	REVISED - S.P.B. 12-09
PLOT SCALE = 50,0000 ' / in.	CHECKED -	REVISED - M.D. 06-13
PLOT DATE = 3/4/2019	DATE - 11-96	REVISED - M.D. 01-18

STATE OF ILLINOIS DEPARTMENT OF TRANSPORTATION

TRAFFIC CONTROL DETAILS FOR FREEWAY SHOULDER CLOSURES AND PARTIAL RAMP CLOSURES

SCALE: NONE SHEET 1 OF 1 SHEETS STA. TO STA.

F.A. RTE.	SECTION	COUNTY	TOTAL SHEETS	SHEET NO.
TC-17			CONTRACT NO.	
ILLINOIS FED. AID PROJECT				