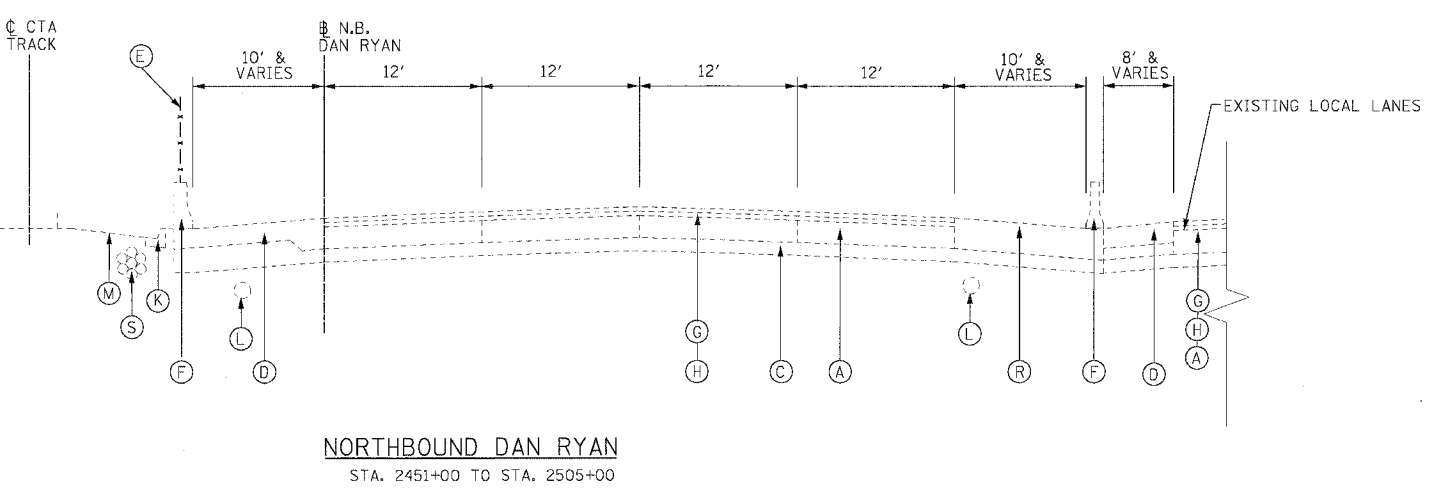
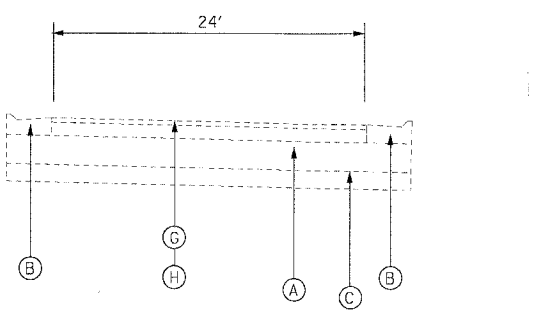
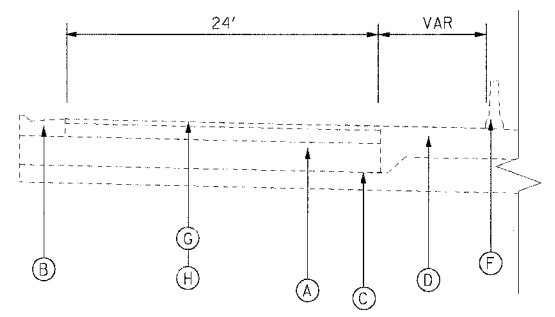
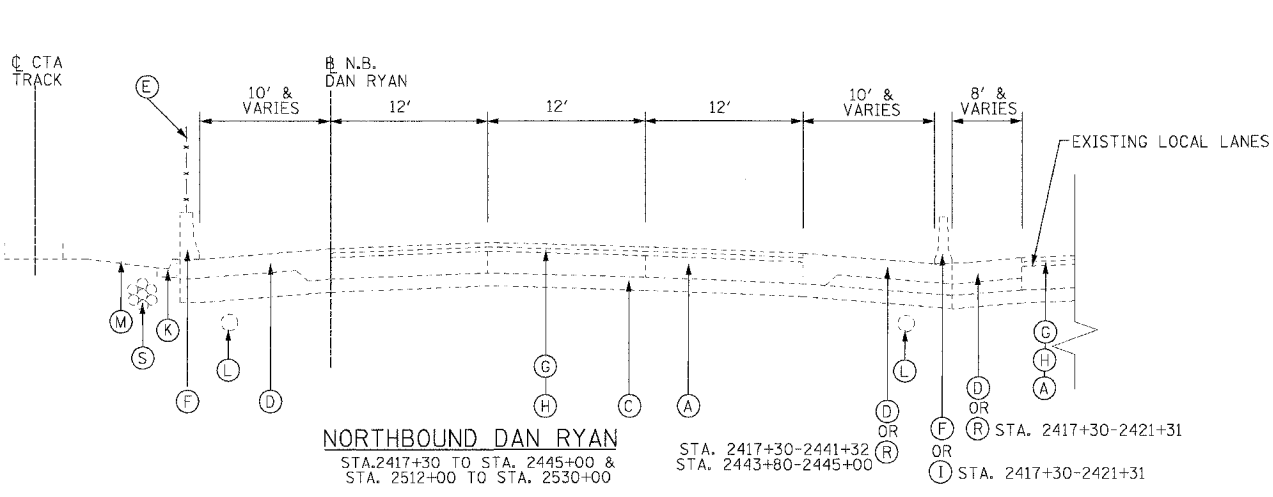
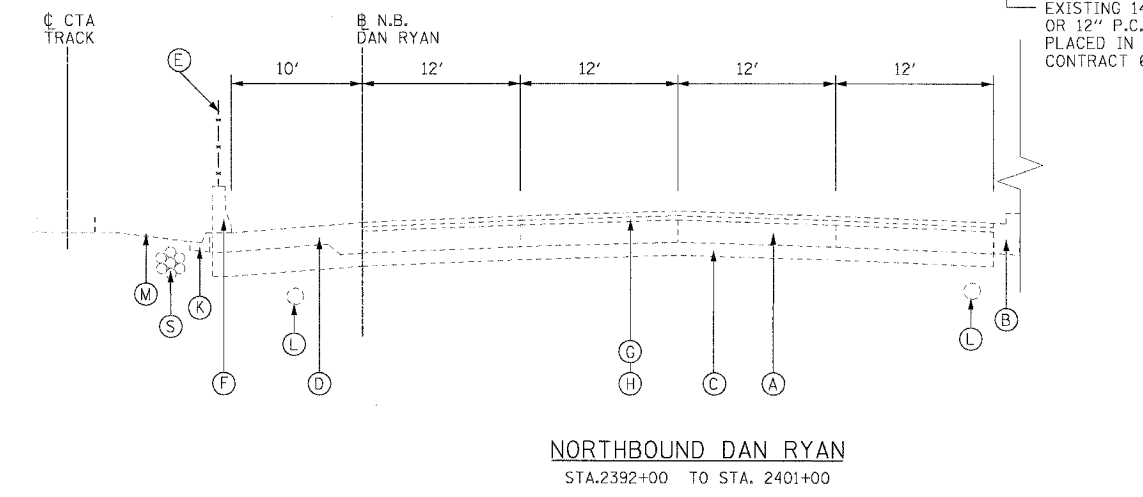
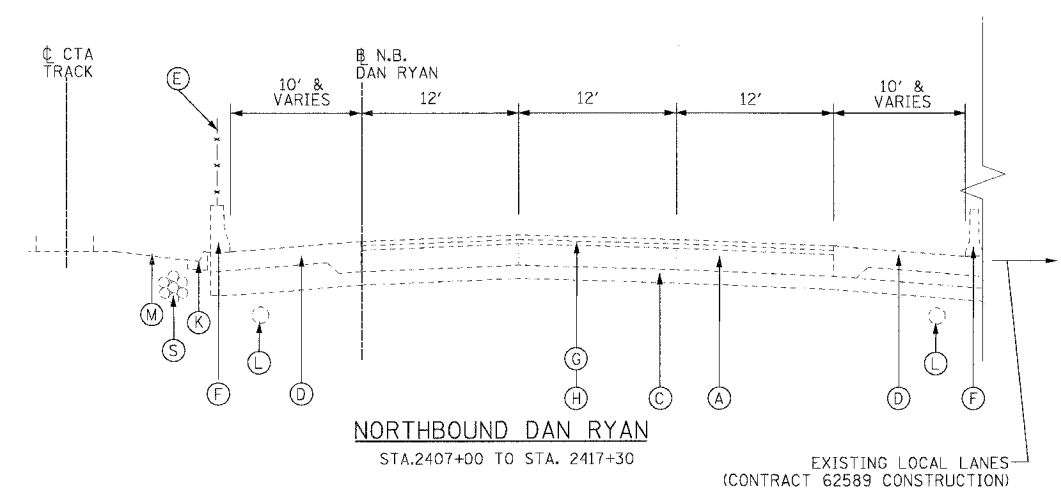
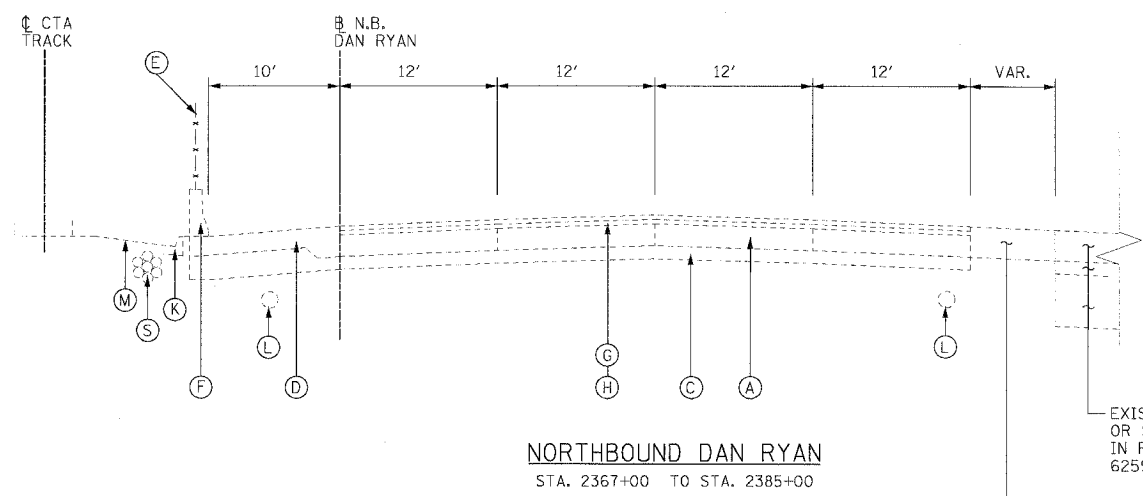


| | | | | |
|---------------------|---------|---------------------------|--------------|-----------|
| F.A.I. RTE. | SECTION | COUNTY | TOTAL SHEETS | SHEET NO. |
| 94/90 | | COOK | 556 | 12 |
| STA. | | TO STA. | | |
| FED. ROAD DIST. NO. | | ILLINOIS FED. AID PROJECT | | |
| 62300 | | (1818, ETC, 2324.6-1PIR-8 | | |



- EXISTING CONDITIONS LEGEND**
- (A) P.C.C. PAVEMENT 10" OR C.R.C. PAVEMENT 8" (SEE NOTE 1)
 - (B) COMBINATION CONCRETE CURB AND GUTTER
 - (C) GRANULAR SUB-BASE 6"
 - (D) P.C.C. SHOULDER 9"
 - (E) CHAIN LINK FENCE
 - (F) CONCRETE BARRIER
 - (G) BITUMINOUS CONCRETE SURFACE COURSE, 1 1/2"
 - (H) BITUMINOUS CONCRETE BINDER COURSE, 4 3/4"
 - (I) TEMPORARY CONCRETE BARRIER
 - (J) C.R.C. PAVEMENT 8"
 - (K) TYPE 34 CURB AND GUTTER
 - (L) PIPE UNDERDRAINS 8"
 - (M) C.T.A. BALLAST
 - (N) BITUMINOUS CONCRETE SURFACE COURSE 1 3/4"
 - (O) BITUMINOUS CONCRETE SURFACE COURSE 2 1/4"
 - (P) BITUMINOUS CONCRETE SURFACE COURSE 3 1/2"
 - (Q) 4" STABILIZED SHOULDER B.A.M.
 - (R) BITUMINOUS CONCRETE SURFACE COURSE 1 3/4"
 - (S) BITUMINOUS CONCRETE BASE COURSE 12 1/4"
 - (T) C.T.A. FIBER OPTIC DUCT

NOTE:

- P.C.C. PAVEMENT 10" STA. 2367+00 TO 2410+00
C.R.C. PAVEMENT 8" STA 2410+00 TO STA 2530+00
- THICKNESS OF EXISTING PAVEMENT AND SUB BASES ARE TAKEN FROM AS-BUILT PLANS.
- REMOVAL OF TYPE 34 COMBINATION CONCRETE CURB AND GUTTER SHALL BE PERFORMED AS REQUIRED. THIS REMOVAL WILL BE INCLUDED IN THE COST OF CTA BARRIER REMOVAL AND WILL NOT BE PAID FOR SEPARATELY.

| REVISIONS | |
|-----------|------|
| NAME | DATE |
| | |
| | |
| | |
| | |
| | |

ILLINOIS DEPARTMENT OF TRANSPORTATION
F.A.I. 94/90 (DAN RYAN EXPRESSWAY)
31ST STREET TO 71ST STREET
NB EXPRESS LANE RECONSTRUCTION
EXISTING TYPICAL SECTIONS
NORTHBOUND DAN RYAN

SCALE: NONE
DATE: 7/7/05

DRAWN BY: TAI
CHECKED BY: PJM



P:\NO.300960.55\CON. 148\5\04\04\NAN\460121.SW 06/24/2005 03:46:55 PM