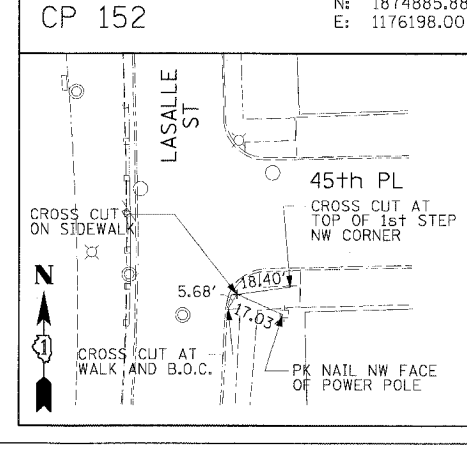
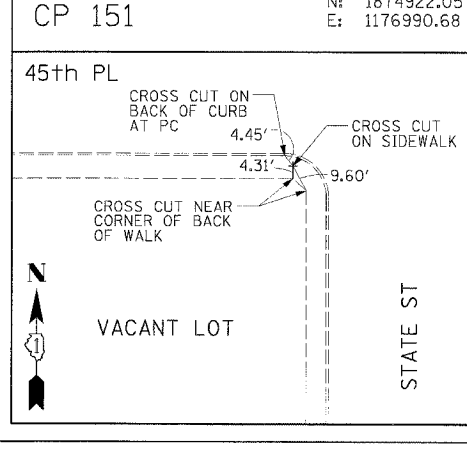
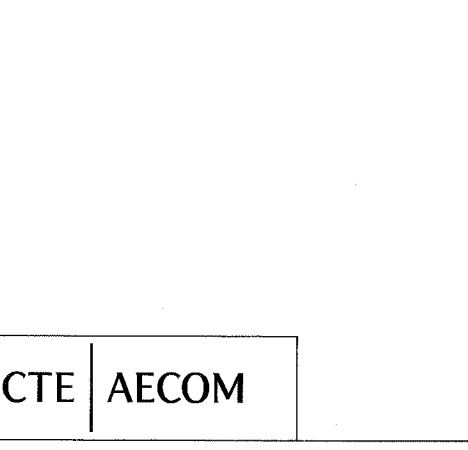
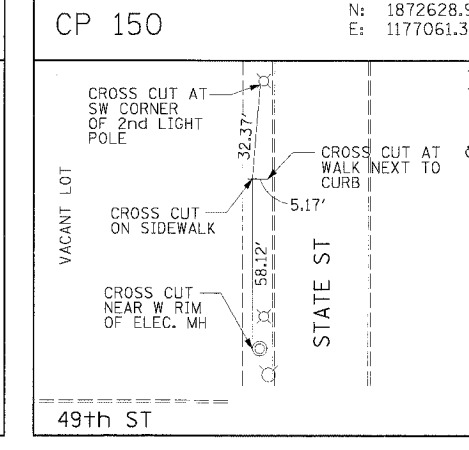
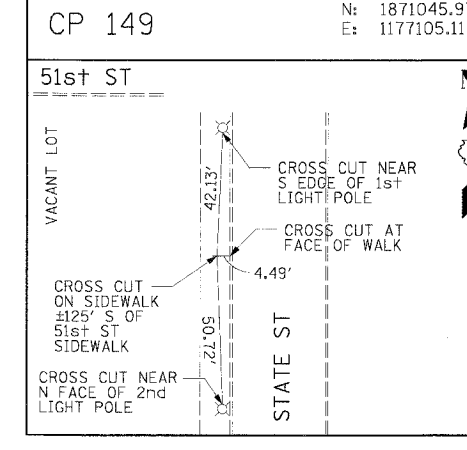
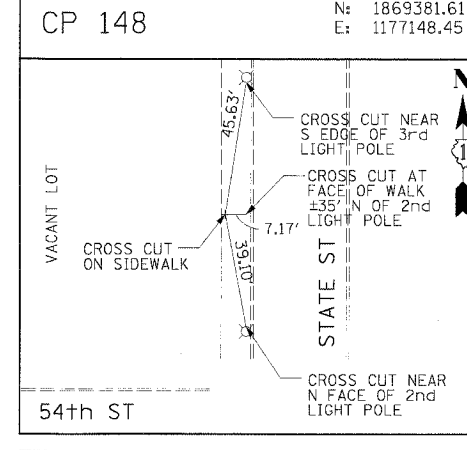
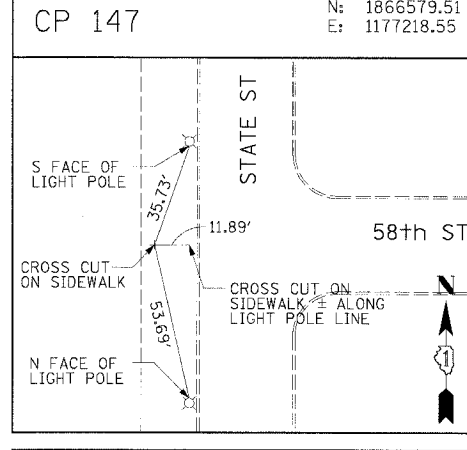
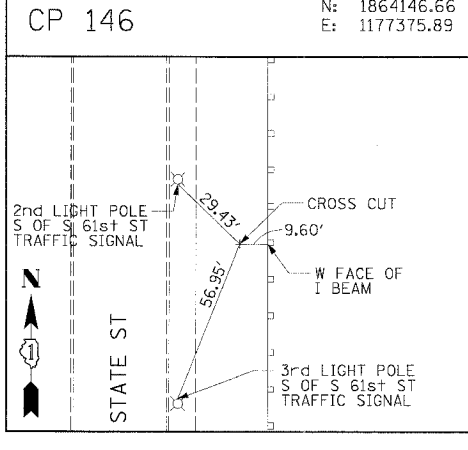
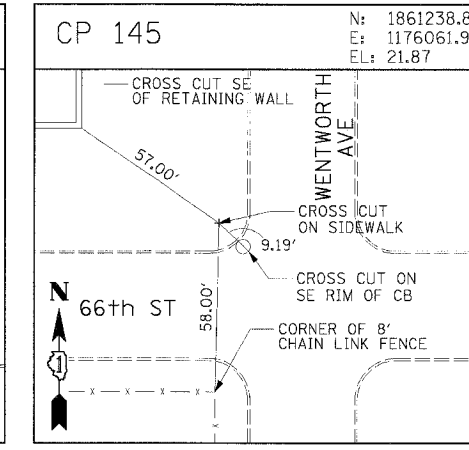
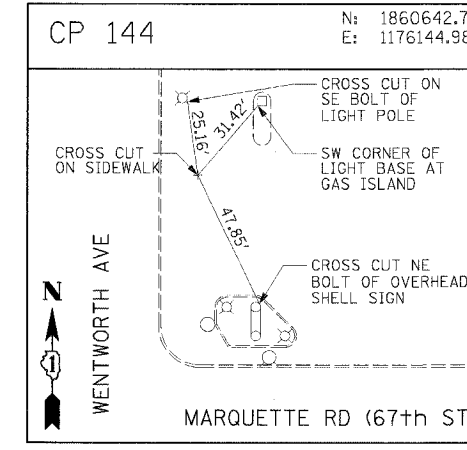
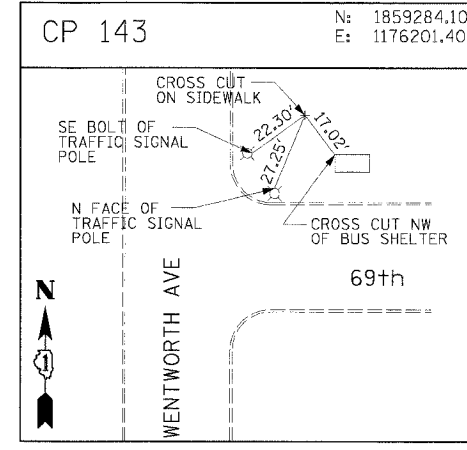
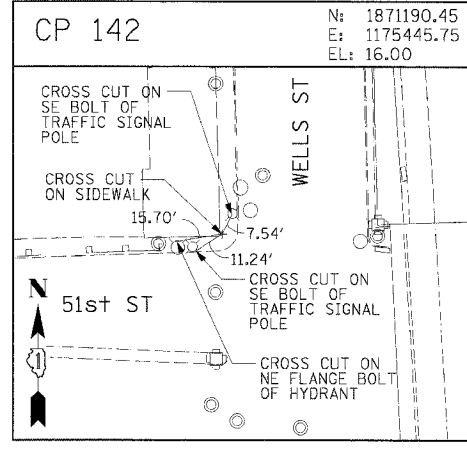
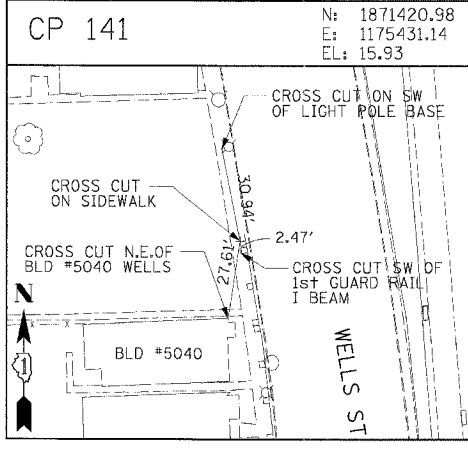
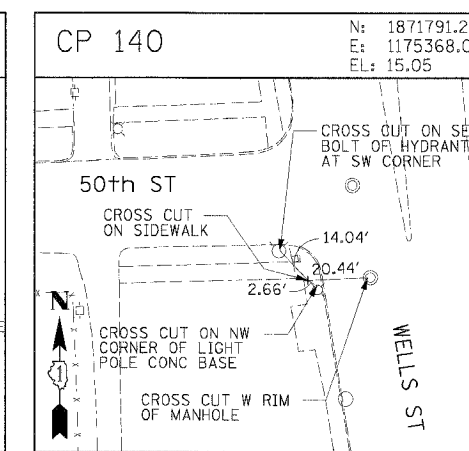
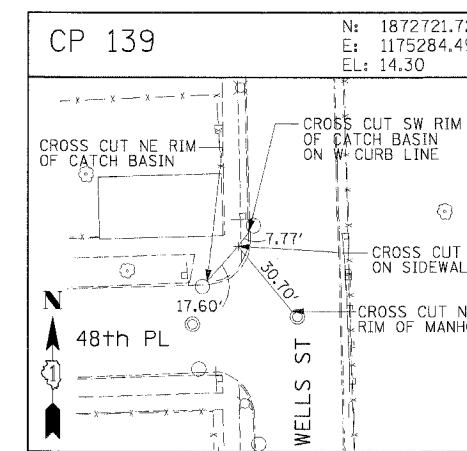
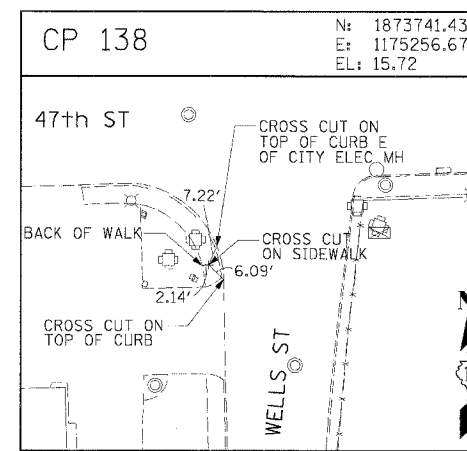
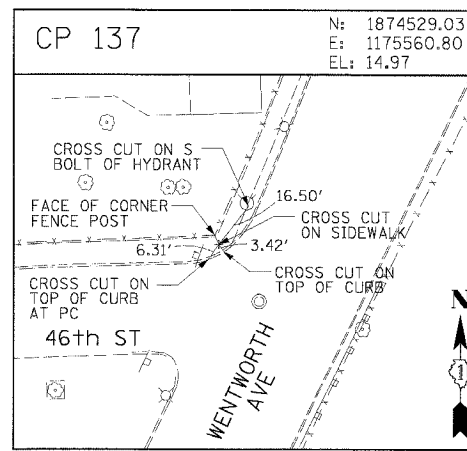
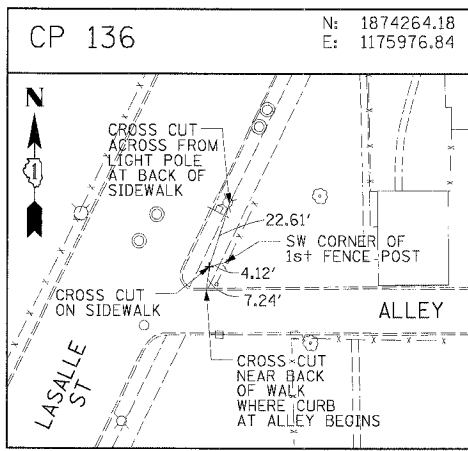


F.A.I. RTE.	SECTION	COUNTY	TOTAL SHEETS	SHEET NO.
90/94	*	COOK	556	40
STA.	TO STA.			
FED. ROAD DIST. NO. 1 ILLINOIS			FED. AID PROJECT	
* (1818, ETC, 2324.6-1PR-8			62300	



CTE AECOM

REVISIONS	
NAME	DATE

ILLINOIS DEPARTMENT OF TRANSPORTATION  
F.A.I. 90/94 (DAN RYAN EXPRESSWAY)  
71ST STREET TO 31ST STREET (NB EXPRESS LANES)

SURVEY TIES AND CONTROL POINTS

SCALE: 1"=30'  
DATE: 7/7/05

DRAWN BY: MRK  
CHECKED BY: JAL

06/24/2005 10:46:59 AM