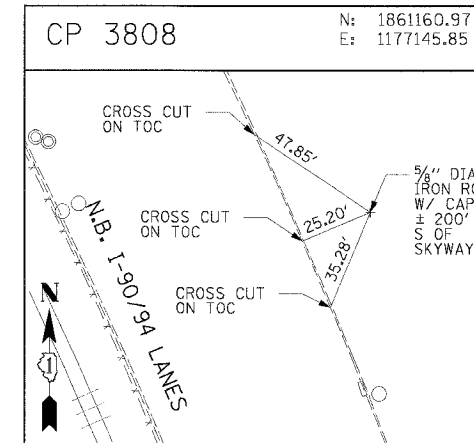
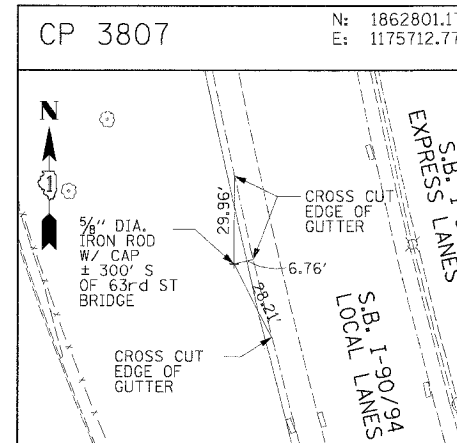
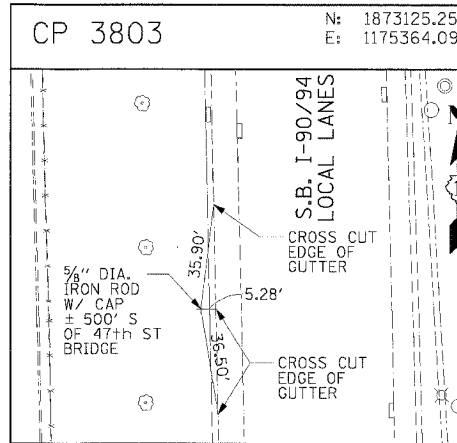
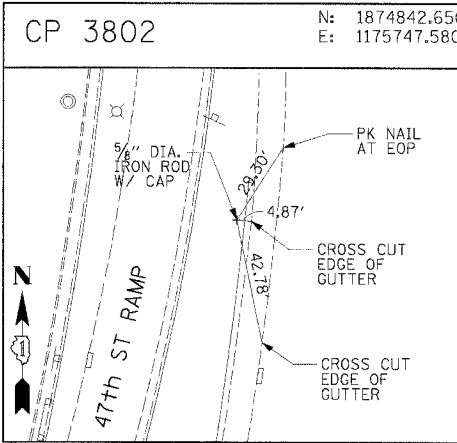
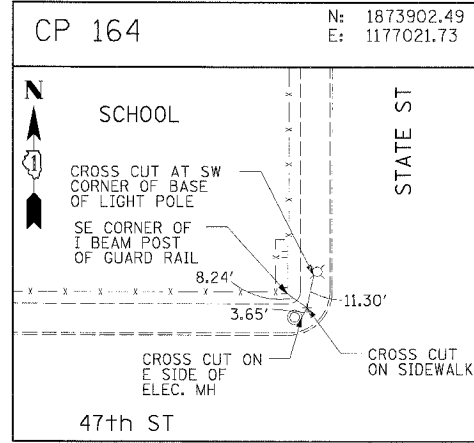
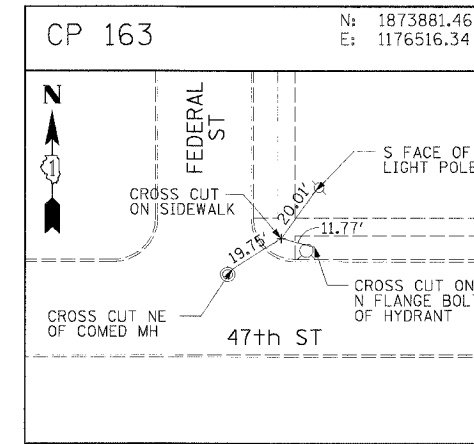
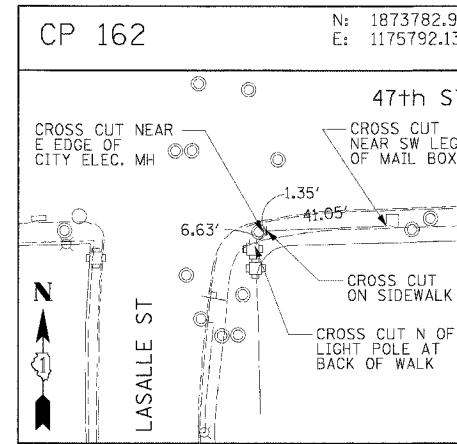
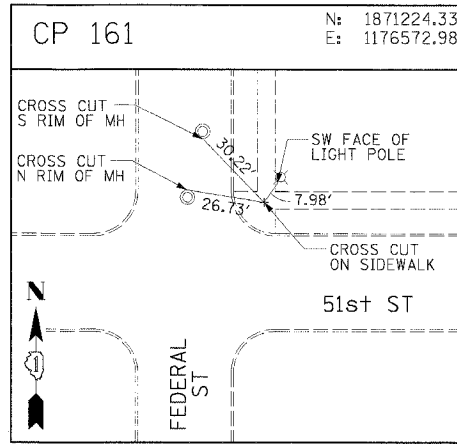
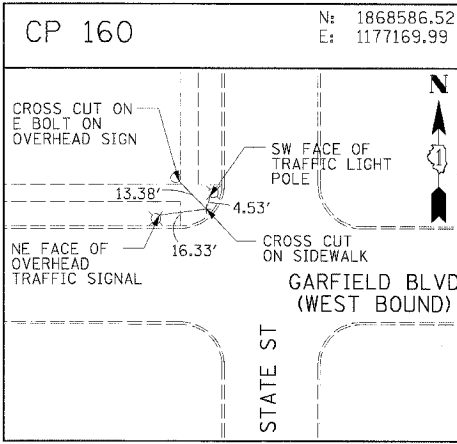
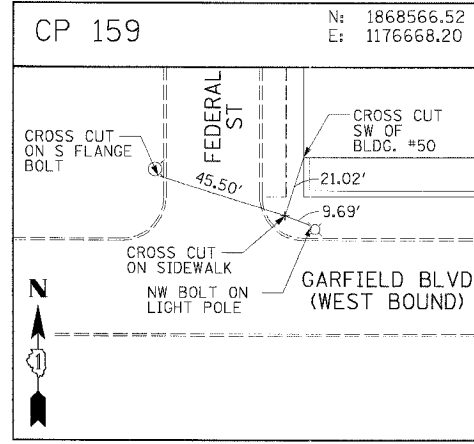
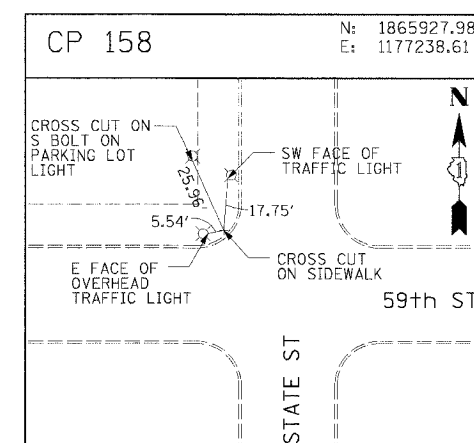
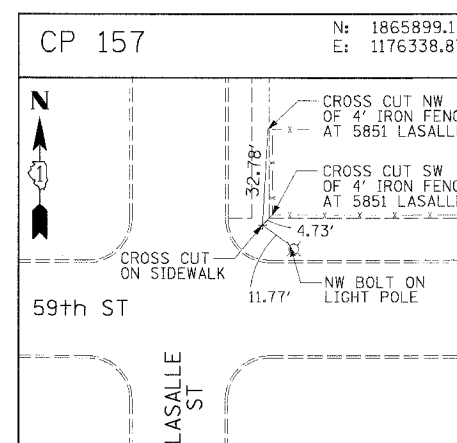
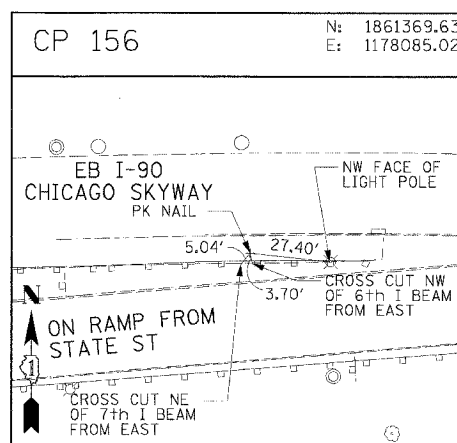
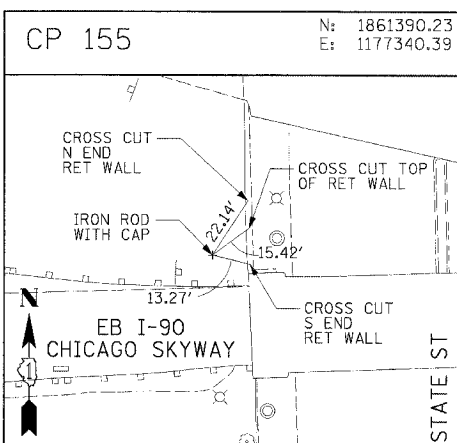
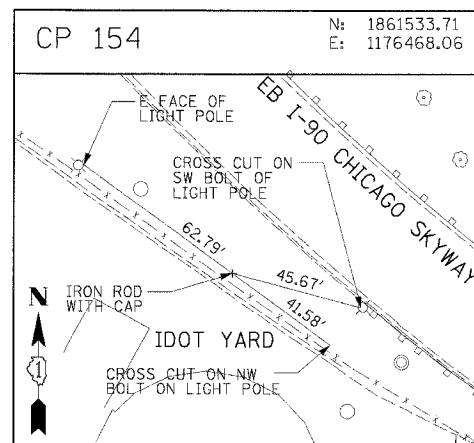


F.A.I. RTE.	SECTION	COUNTY	TOTAL SHEET SHEETS	NO.
90/94		COOK	556	41
STA.		TO STA.		
FED. ROAD DIST. NO. 1		ILLINOIS	FED. AID PROJECT	
				62300
• (1818, ETC, 2324.6-1)PR-8				



CTE | AECOM

REVISIONS	
NAME	DATE

ILLINOIS DEPARTMENT OF TRANSPORTATION
 F.A.I. 90/94 (DAN RYAN EXPRESSWAY)
 71ST STREET TO 31ST STREET (NB EXPRESS LANES)
 SURVEY TIES AND CONTROL POINTS
 SCALE: 1"=30'
 DATE: 7/7/05
 DRAWN BY: MRK
 CHECKED BY: JAL

10/24/2005 10:49:22 AM