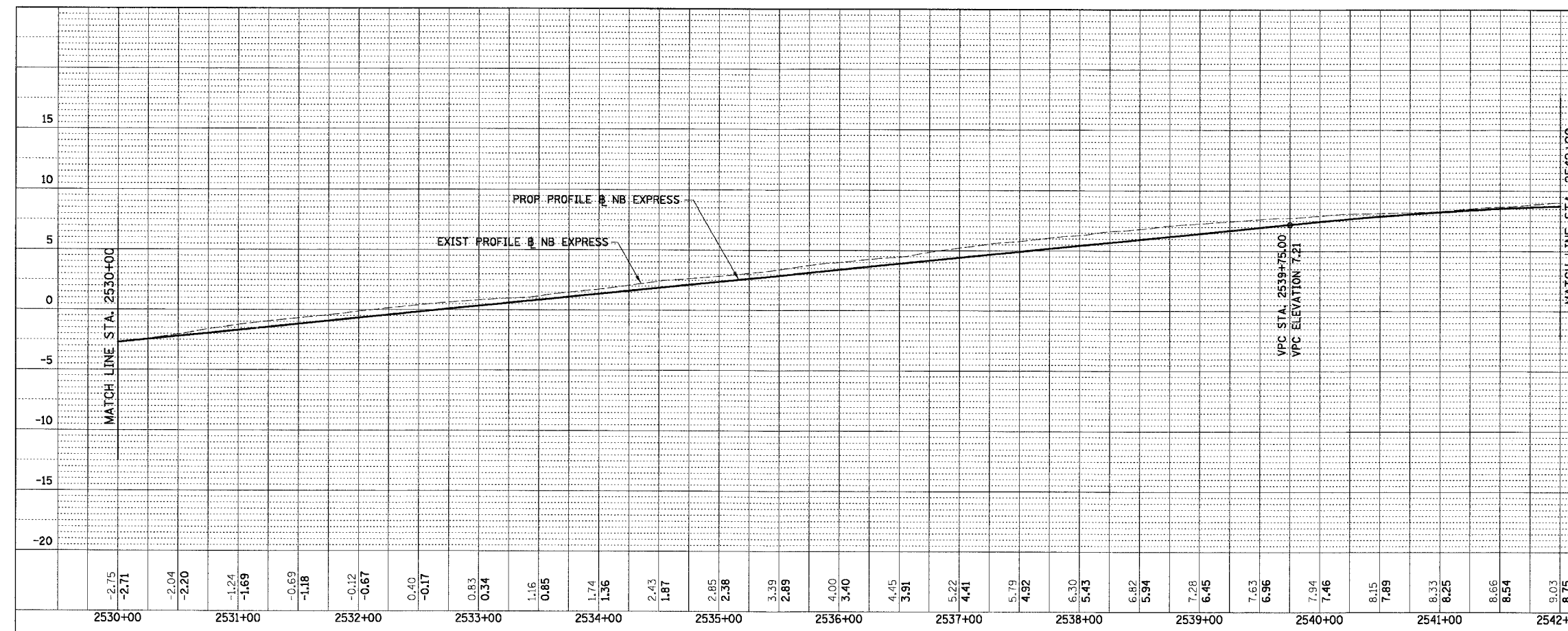
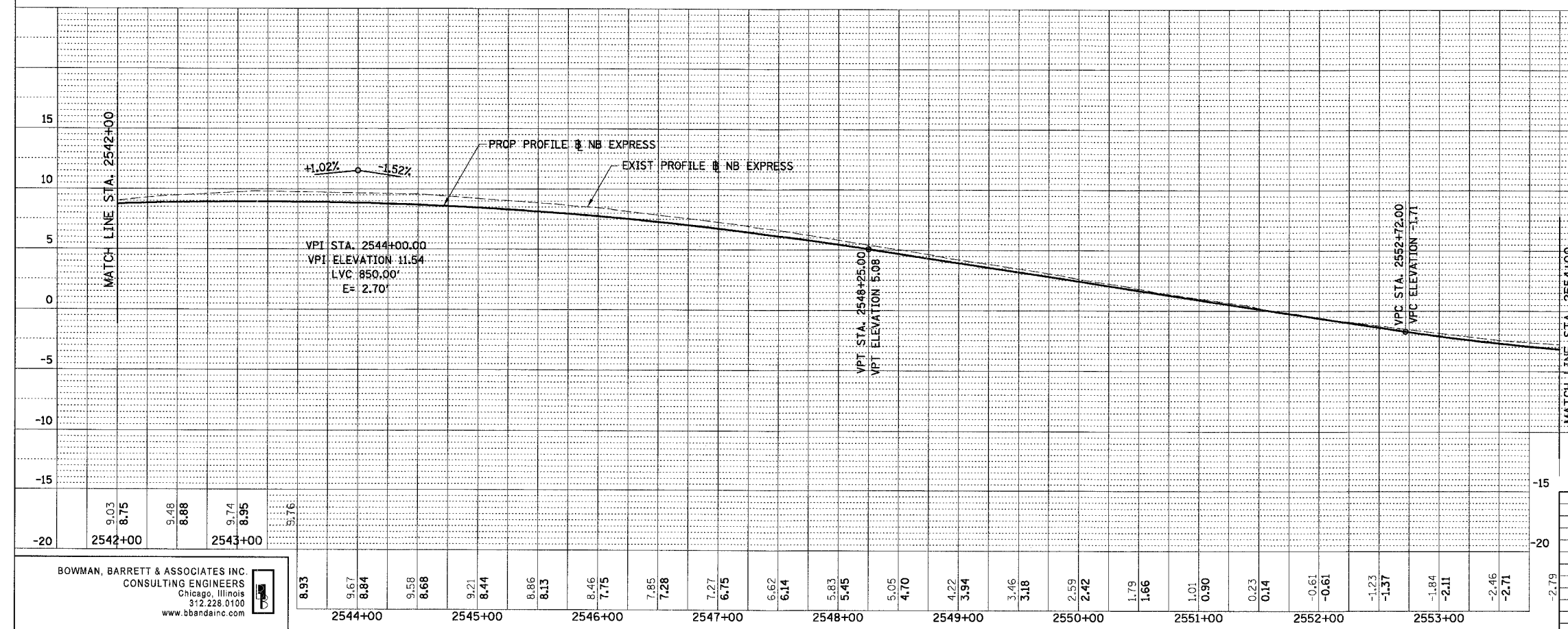


F.A.I. SECTION	COUNTY	TOTAL SHEETS	SHEET NO.
94/90 *	COOK	556	73
STA. 2530+00 TO STA. 2554+00			
FED. ROAD DIST. NO.	ILLINOIS	FED. AID PROJECT	

PLAN	REVISIONS	DATE
NOTE BOOK NO.	CHECKED	
	PLOTTED	
	BY	
	DATE	



PLAN	REVISIONS	DATE
NOTE BOOK NO.	CHECKED	
	PLOTTED	
	BY	
	DATE	



REVISIONS	DATE

ILLINOIS DEPARTMENT OF TRANSPORTATION
 F.A.I. 94/90 (DAN RYAN EXPRESSWAY)
 31ST STREET TO 71ST STREET
 NB EXPRESS LANE RECONSTRUCTION
 EXISTING AND PROPOSED PROFILE
 NORTHBOUND STA. 2530+00 TO STA. 2554+00

SCALE: 1"=25' VERT
 1"=50' HORIZ
 DATE: 07/07/05

DRAWN BY: RA
 CHECKED BY: JDC

BOWMAN, BARRETT & ASSOCIATES INC
 CONSULTING ENGINEERS
 Chicago, Illinois
 312.228.0100
 www.bbainc.com

6/24/2005 2:36:35 PM
 P:\62300\DWG\AS\11E\1566\11E\11E11E.dwg