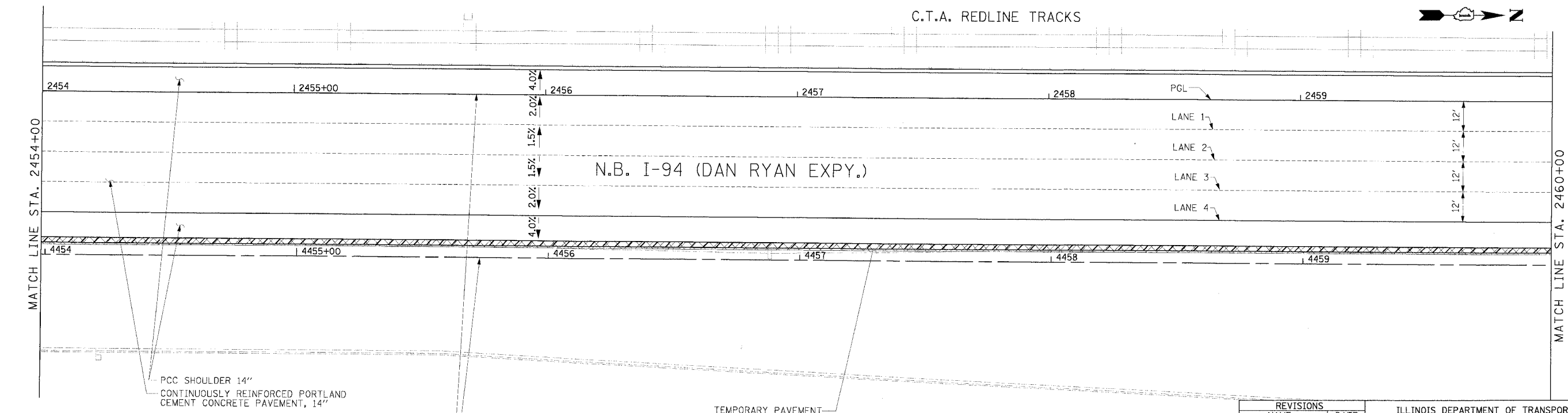
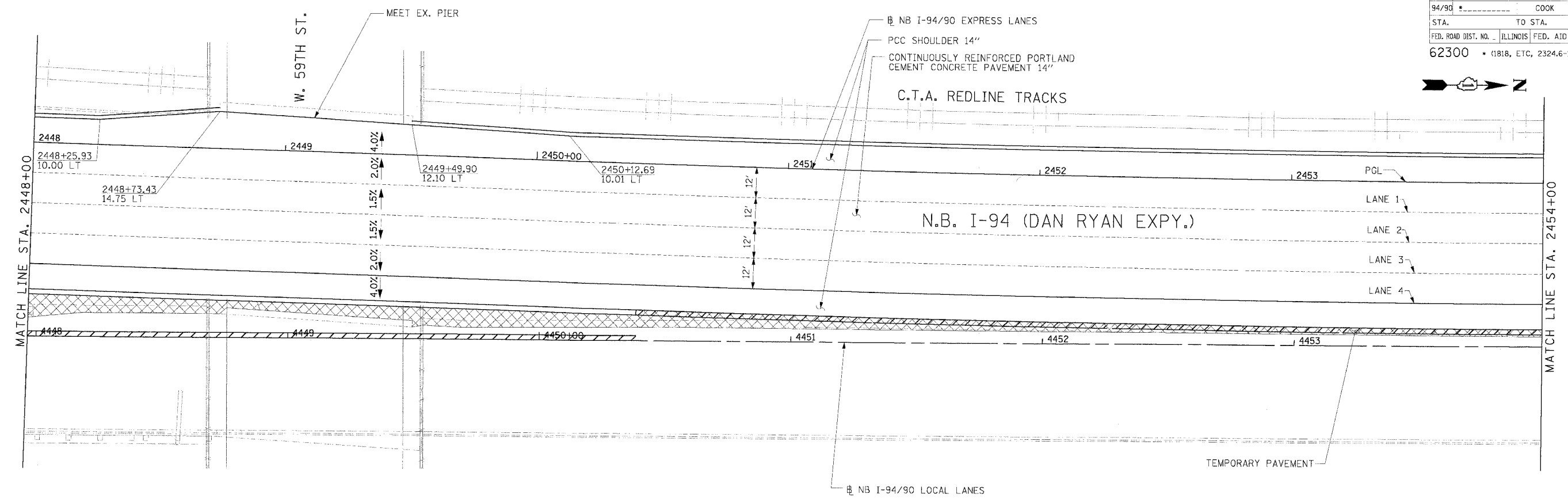
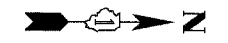


F.A.I. RTE.	SECTION	COUNTY	TOTAL SHEETS	SHEET NO.
94/90		COOK	556	251
STA.	TO STA.			
FED. ROAD DIST. NO.	ILLINOIS	FED. AID PROJECT		
62300	11818, ETC, 2324.6-1PIR-8			



JT-8

LEGEND
 [###] ELEVATION STATIONED OFF OF NB I-94/90 EXPRESS LANES
 [#.#] ELEVATION STATIONED OFF OF NB I-94/90 LOCAL LANES
 [.#.#] ELEVATION STATIONED OFF OF SLIP RAMP ALIGNMENT

NOTE:
 1. PAVEMENT ELEVATIONS ALONG RAMPS, GORES AND IN AREAS OF SUPERELEVATION TRANSITION ARE PROVIDED AT 25' INTERVALS. FOR ALL OTHER ELEVATIONS, REFER TO PROFILE AND TYPICAL SECTIONS.

REVISIONS	
NAME	DATE

ILLINOIS DEPARTMENT OF TRANSPORTATION
 F.A.I. 94/90 (DAN RYAN EXPRESSWAY)
 31ST STREET TO 71ST STREET
 NB EXPRESS LANE RECONSTRUCTION
 PAVEMENT JOINTING AND ELEVATION PLAN
 NORTHBOUND STA. 2448+00 TO STA. 2460+00
 SCALE: 0' 10' 20' 30' 40'
 DATE: 7/7/05
 DRAWN BY: TAI
 CHECKED BY: PJM

Edwards AND Kelcey
 ONE NORTH FRANKLIN
 CHICAGO, IL 60606
 PHONE: (312) 251-3000
 FAX: (312) 251-3015
 WEB: WWW.EKCORP.COM

P:\03\09\94\90\Com\148\15\CADD\N\148008.dwg
 06/27/2005 07:57:29 PM