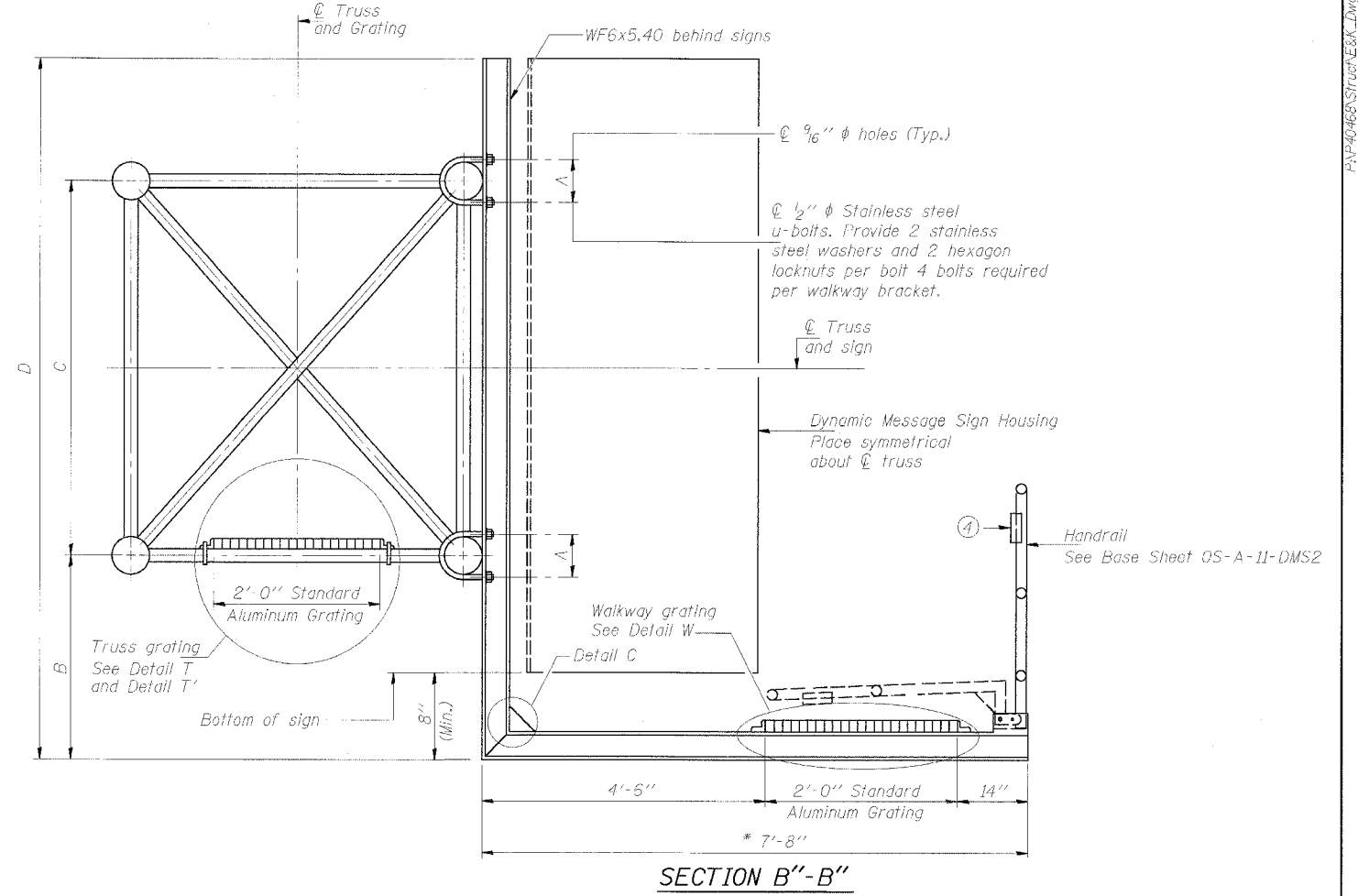
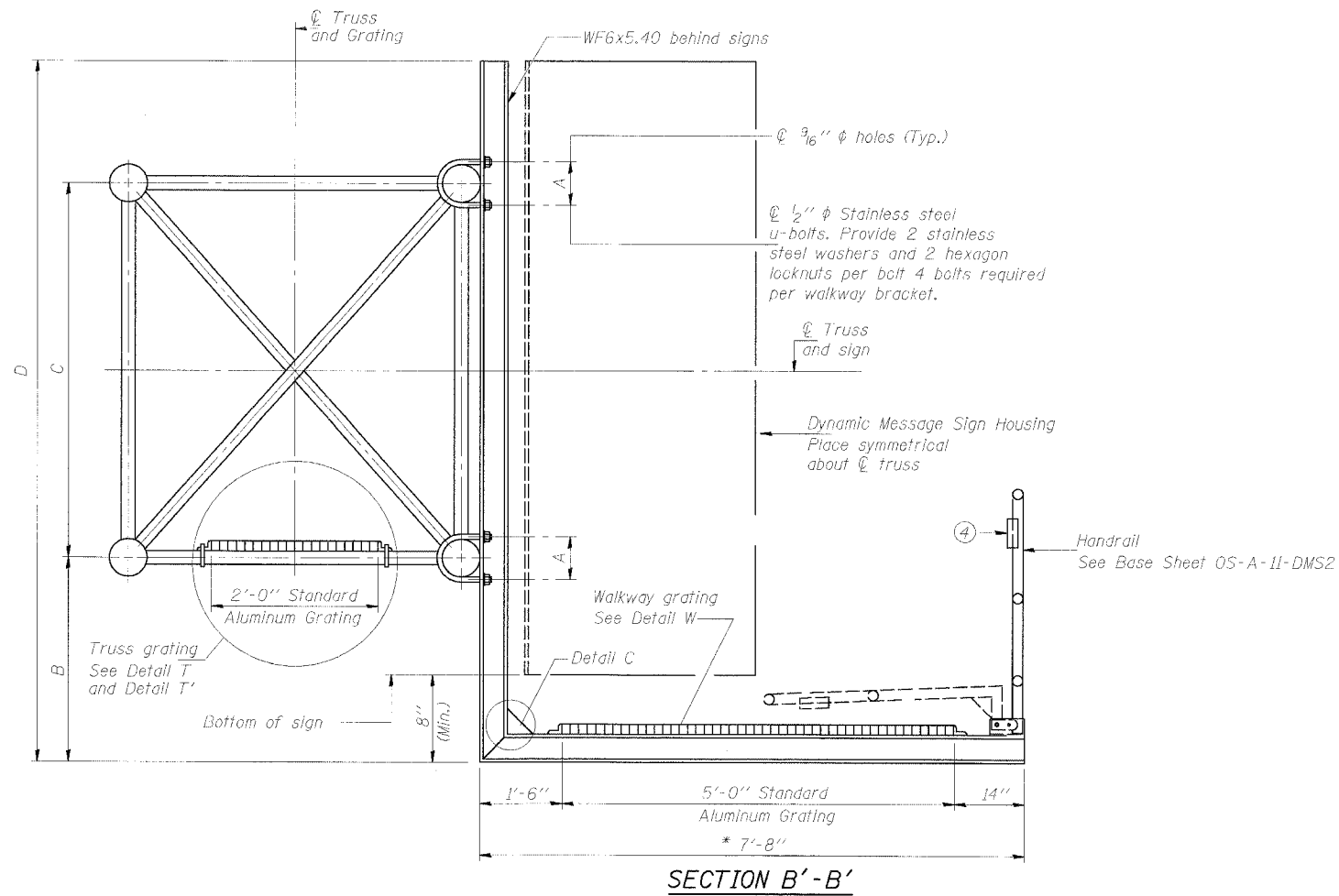


STATE OF ILLINOIS
DEPARTMENT OF TRANSPORTATION

ROUTE NO.	SECTION	COUNTY	SHEET NO.	TOTAL SHEETS
90/94	*	COOK	556	316

*(1818, ETC, 2324.6-1P) R-8
62300



* Bracket and grating dimensions are nominal and will vary based on actual DMS cabinet dimensions plus manufacturer's mounting devices, and providing clearance between the lowered handrail and DMS cabinet.

Note:
For dimensions "A" to "D" and remaining details, see sheet OS-A-10-DMS2

DESIGNED	19
CHECKED	EXAMINED
DRAWN	PASSED
CHECKED	ENGINEER OF BRIDGES AND STRUCTURES

OS-A-10a-DMS2 7/1/2001

NUMBER	REVISION	DATE

OVERHEAD SIGN STRUCTURES
ALTERNATE ALUMINUM WALKWAY DETAILS

F.A.I. 90/94 (DAN RYAN EXPRESSWAY)
31st Street to 71st Street
(NB Express Lanes)

5/24/2005 2:44:02 PM P:\P\0468\Struct\EBK\Draws\CMR_62300\01_Signs\62300A03A.dwg