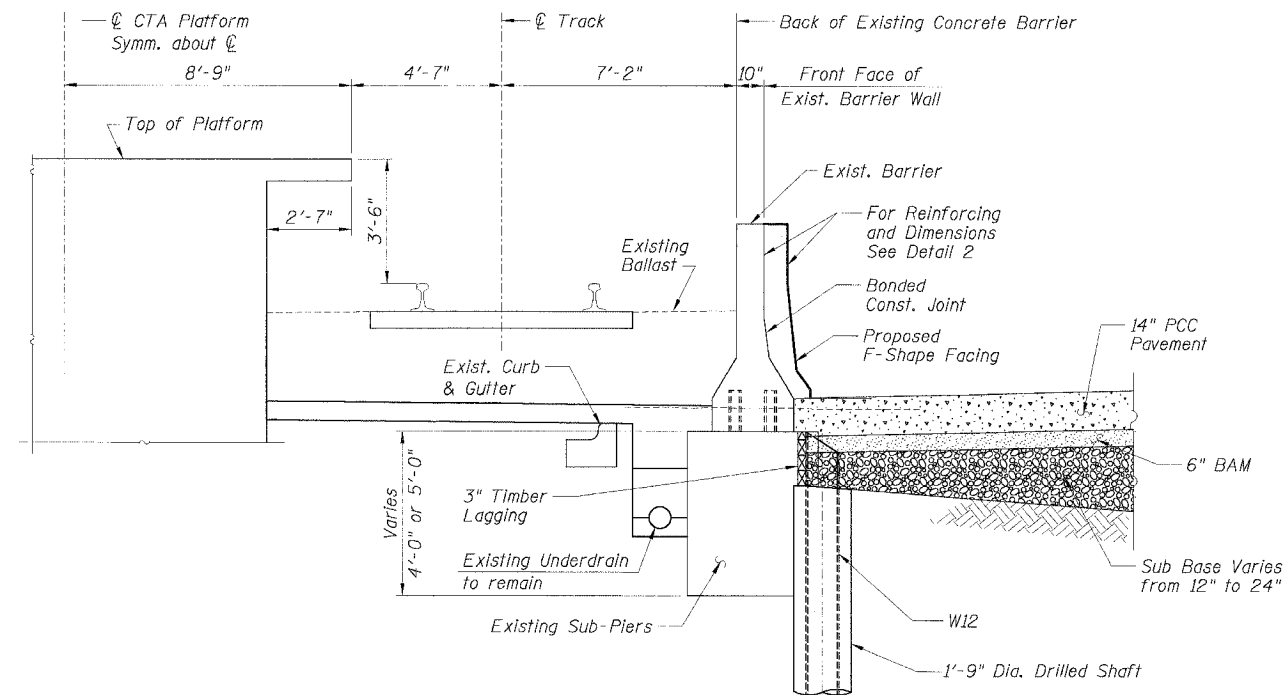


STATE OF ILLINOIS  
DEPARTMENT OF TRANSPORTATION

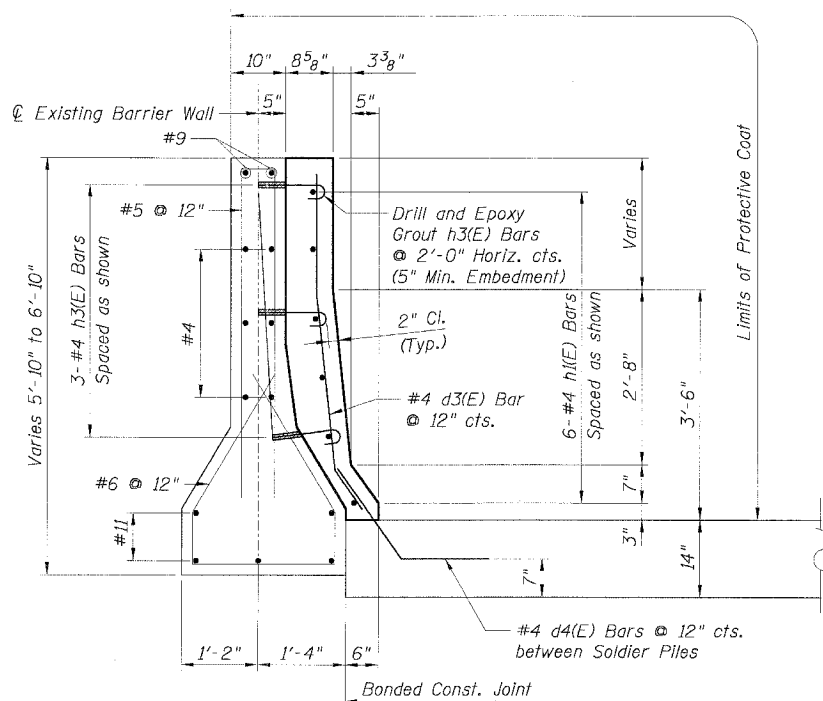
F.A.I. RTE.	SECTION	COUNTY	TOTAL SHEETS	SHEET NO.
90/94	•	COOK	556	372
STA.	TO STA.			
FED. ROAD DIST. NO. 1 ILLINOIS FED. AID PROJECT				
• (1818, ETC, 2324.6-1)R-8				
				62300



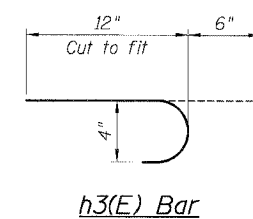
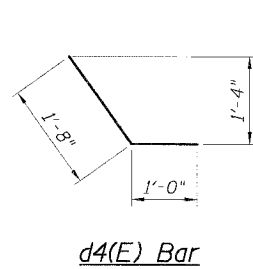
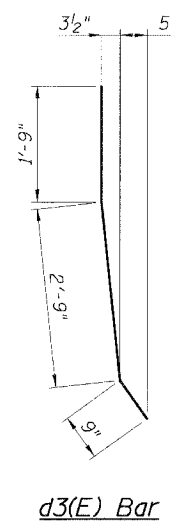
TYPICAL SECTION  
AT STATION PLATFORM

BILL OF MATERIAL

Bar	No.	Size	Length	Shape
d3(E)		#4	5'-3"	—
d4(E)		#4	2'-8"	—
h1(E)		#4		—
h3(E)		#4	1'-6"	—
Item	Unit	Quantity		
Furnishing Soldier Piles, W12x—	Foot			
Drilling and Setting Soldier Piles (in Soil)	Cu. Ft.			
Untreated Timber Lagging	Sq. Ft.			
Reinforcement Bars,				
Epoxy Coated	Lbs.			
Concrete Structures	Cu. Yd.			
Protective Coat	Sq. Yd.			



DETAIL 2



LEGEND:

	PCC Pavement
	BAM
	Sub Base
	Earth

NOTES:

1. Drilling and grouting of #4 h3(E) bars shall be in accordance with Section 584 of the Standard Specifications.
2. #4 d4(E) bars shall be seated in their final position prior to the placement of the concrete shoulder. Bars shall not be mucked into place.
3. The cost of drilling holes, furnishing and placing Epoxy Grout and setting #4 h3(E) bars shall be included in the cost per cubic yard for Concrete Structures.
4. Provide joints in facing to match those in the existing barrier.

REVISIONS	
NAME	DATE

Sheet B4 of 16  
ILLINOIS DEPARTMENT OF TRANSPORTATION  
F.A.I. 90/94 (DAN RYAN EXPRESSWAY)  
EXISTING BARRIER WALL MODIFICATIONS  
AT CTA STATIONS  
PROPOSED T/S SHOULDER AT OR ABOVE EXISTING  
TYPICAL SECTIONS & DETAILS

SCALE: None  
DATE: JULY 7, 2005  
DRAWN BY: KWT  
CHECKED BY: RDP

CTE AECOM

303 East Wacker Drive, Suite 600, Chicago, Illinois 60601-5076  
T 312.467.2000 F 312.467.1100 www.cteaecom.com

06/24/2005 02:39:33 PM