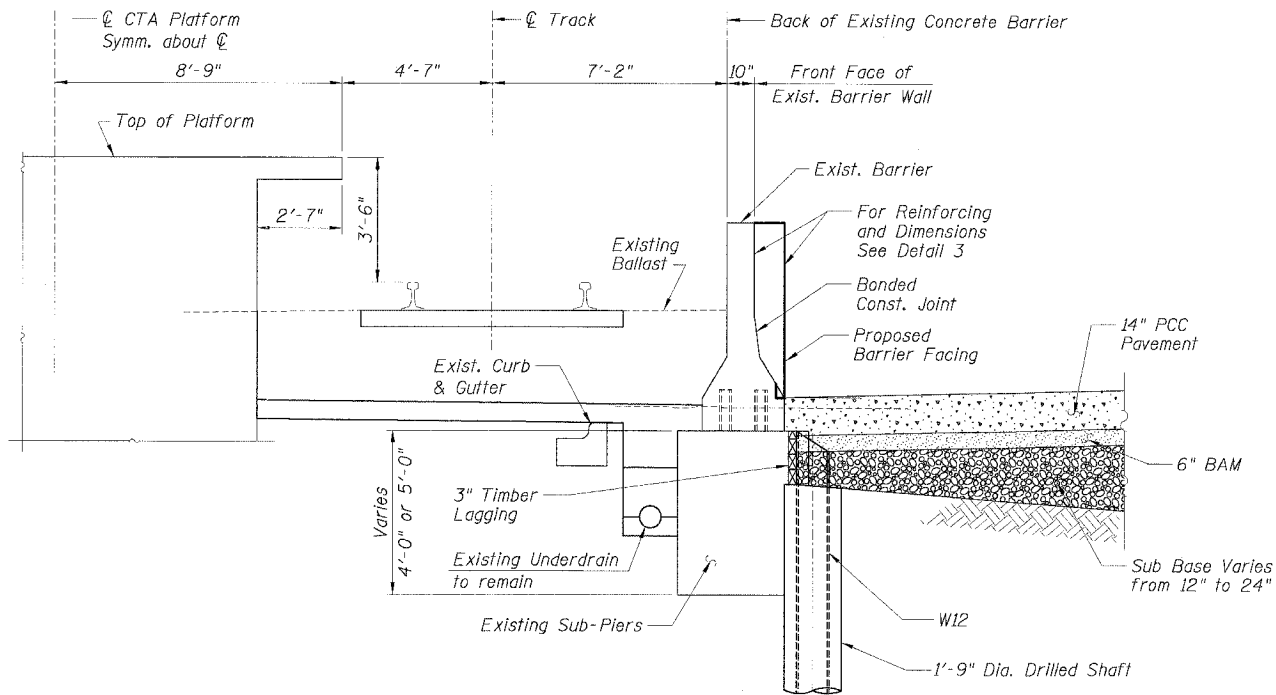
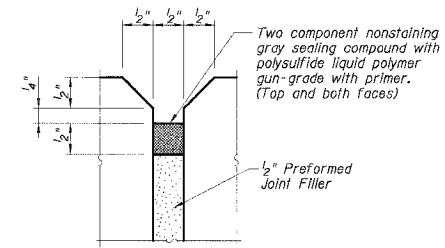


STATE OF ILLINOIS  
DEPARTMENT OF TRANSPORTATION

F.A.I. RTE. 90/94	SECTION *	COUNTY COOK	TOTAL SHEETS 556	SHEET NO. 375
STA. TO STA.		FED. ROAD DIST. NO. 1 ILLINOIS FED. AID PROJECT		
* (1818, ETC. 2324.6-1P)R-8				62300



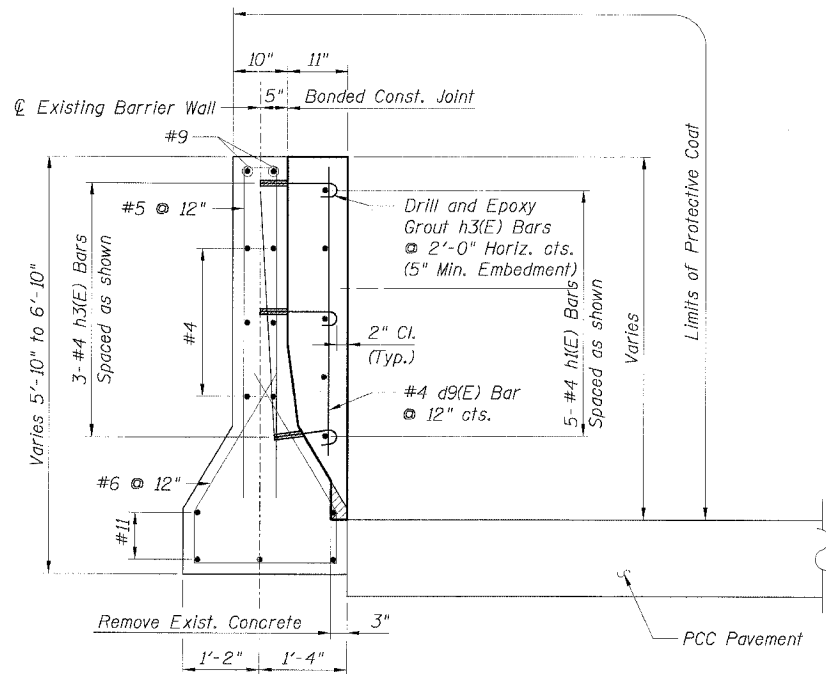
TYPICAL SECTION  
BETWEEN SUB-PIERS  
AT 69TH ST. STATION (NB)



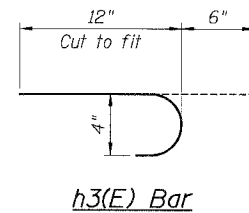
EXPANSION JOINT DETAIL

BILL OF MATERIAL

Bar	No.	Size	Length	Shape
d9(E)		#4	4'-4"	—
h1(E)		#4		—
h3(E)		#4	1'-6"	U
Item	Unit	Quantity		
Furnishing Soldier Piles W12x	Foot			
Drilling and Setting				
Soldier Piles (In Soil)	Cu. Ft.			
Untreated Timber Lagging	Sq. Ft.			
Concrete Removal	Cu. Yd.			
Reinforcement Bars,				
Epoxy Coated	Lbs.			
Concrete Structures	Cu. Yd.			
Protective Coat	Sq. Yd.			



DETAIL 3



h3(E) Bar

LEGEND:

	Concrete Removal
	PCC Pavement
	BAM
	Sub Base
	Earth

NOTES:

1. Drilling and grouting of #4 h3(E) bars shall be in accordance with Section 584 of the Standard Specifications.
2. The cost of drilling holes, furnishing and placing Epoxy Grout and setting #4 h3(E) bars shall be included in the cost per cubic yard for Concrete Structures.
3. Provide joints in facing to match those in the existing barrier.

REVISIONS	
NAME	DATE

Sheet B7 of 16  
ILLINOIS DEPARTMENT OF TRANSPORTATION  
F.A.I. 90/94 (DAN RYAN EXPRESSWAY)  
EXISTING BARRIER WALL MODIFICATIONS  
AT CTA STATIONS  
TYPICAL SECTIONS & DETAILS  
FOR 69th ST. STATION (NB)

SCALE: None DRAWN BY: KWT  
DATE: JULY 7, 2005 CHECKED BY: RDP

CTE | AECOM

CTE  
300 East Wacker Drive, Suite 600, Chicago, Illinois 60601-5216  
T 312.291.2200 F 312.291.2109 www.cteaecom.com

I:\P\40460\STRUCTURE&L\Drawings\CTA-Barrier\VP\09012A.ctb