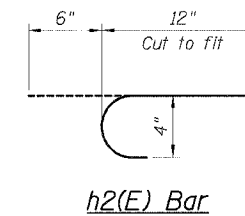
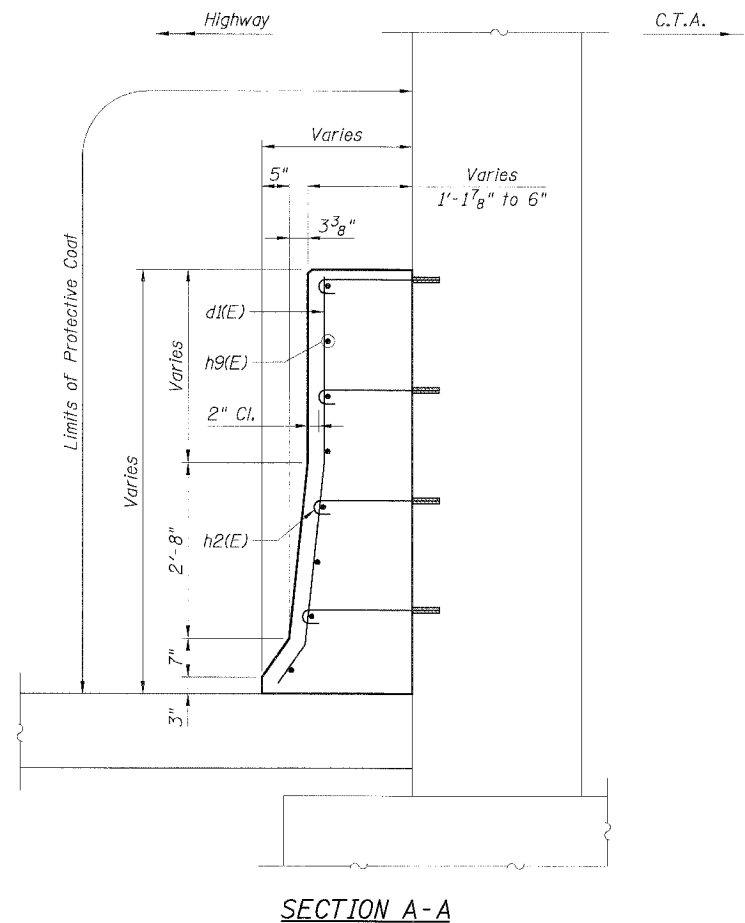
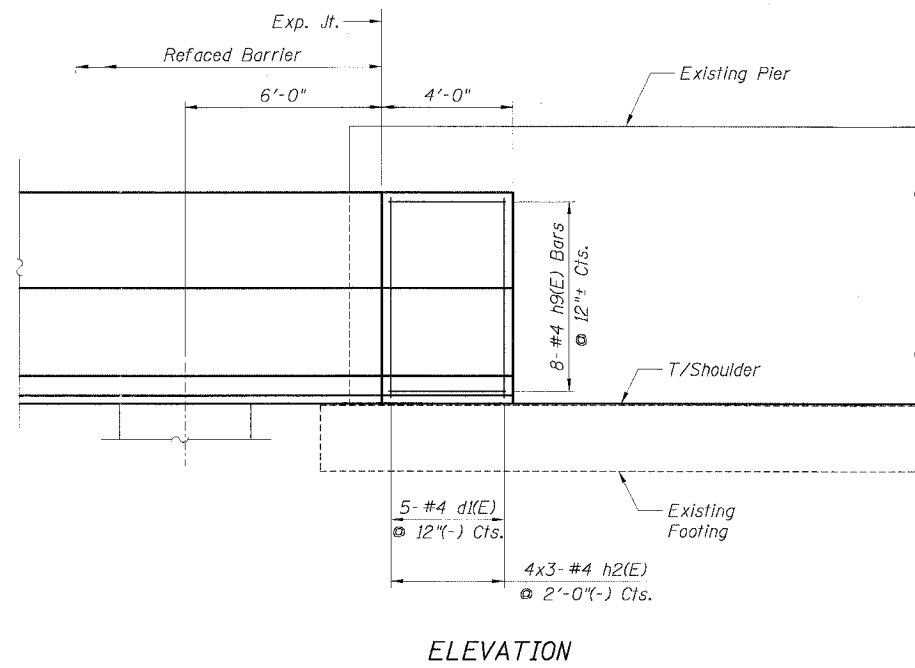
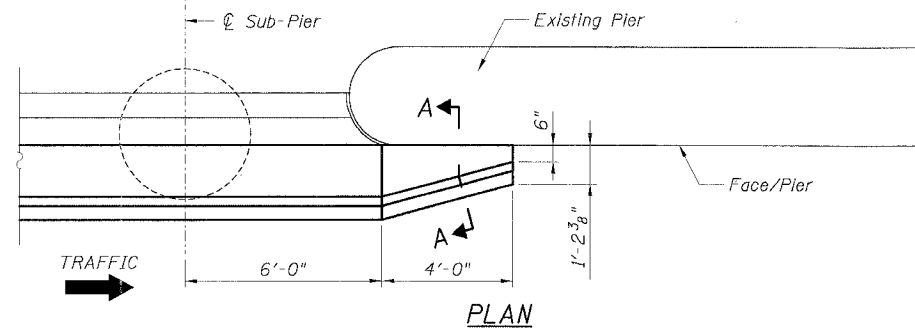


STATE OF ILLINOIS
DEPARTMENT OF TRANSPORTATION

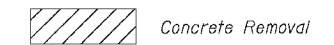
F.A.I. RTE.	SECTION	COUNTY	TOTAL SHEETS	SHEET NO.
90/94	*	COOK	556	377
STA.	TO STA.			
FED. ROAD DIST. NO. 1		ILLINOIS	FED. AID PROJECT	
* (18)B, ETC, 2324.6-1P)R-8		62300		



BILL OF MATERIAL

Bar	No.	Size	Length	Shape
h2(E)	12	#4	2'-4"	—
h9(E)	8	#4	3'-8"	—
d1(E)	5	#4	5'-4"	—
Item	Unit	Quantity		
Reinforcement Bars, Epoxy Coated	Lbs.	60		
Concrete Structures	Cu. Yd.	0.9		
Protective Coat	Sq. Yd.	3.3		

LEGEND:



NOTES:

1. Drilling and grouting of #4 h2(E) bars shall be in accordance with Section 584 of the Standard Specifications.
2. The cost of drilling holes, furnishing and placing Epoxy Grout and setting #4 h2(E) bars shall be included in the cost per cubic yard for Concrete Structures.
3. Provide joints in facing to match those in the existing barrier.
4. For h2(E) bar details, see Sheet B2.
5. For Refaced Barrier details, see Sheets B2 and B3.
6. For locations of Transition, see Roadway Plans.

Sheet B9 of 16

REVISIONS		ILLINOIS DEPARTMENT OF TRANSPORTATION F.A.I. 90/94 (DAN RYAN EXPRESSWAY) EXISTING BARRIER WALL MODIFICATIONS AT CTA STATIONS PROPOSED T/SOULDER BELOW EXISTING REFACED BARRIER TO PIER TRANSITION DETAILS (NO TAPER)
NAME	DATE	
		SCALE: None DRAWN BY: CHD
		DATE: JULY 7, 2005 CHECKED BY: MJP

CTE | AECOM

CTE
300 East Wacker Drive, Suite 600, Chicago, Illinois 60601-5276
T: 312.419.7200 F: 312.419.7201 www.cte.com

P:\40468\STRUCT\EBK_L\Draws\DRW_62300\03.ctb AEBT\PRINT\03EB02EACT.ASB