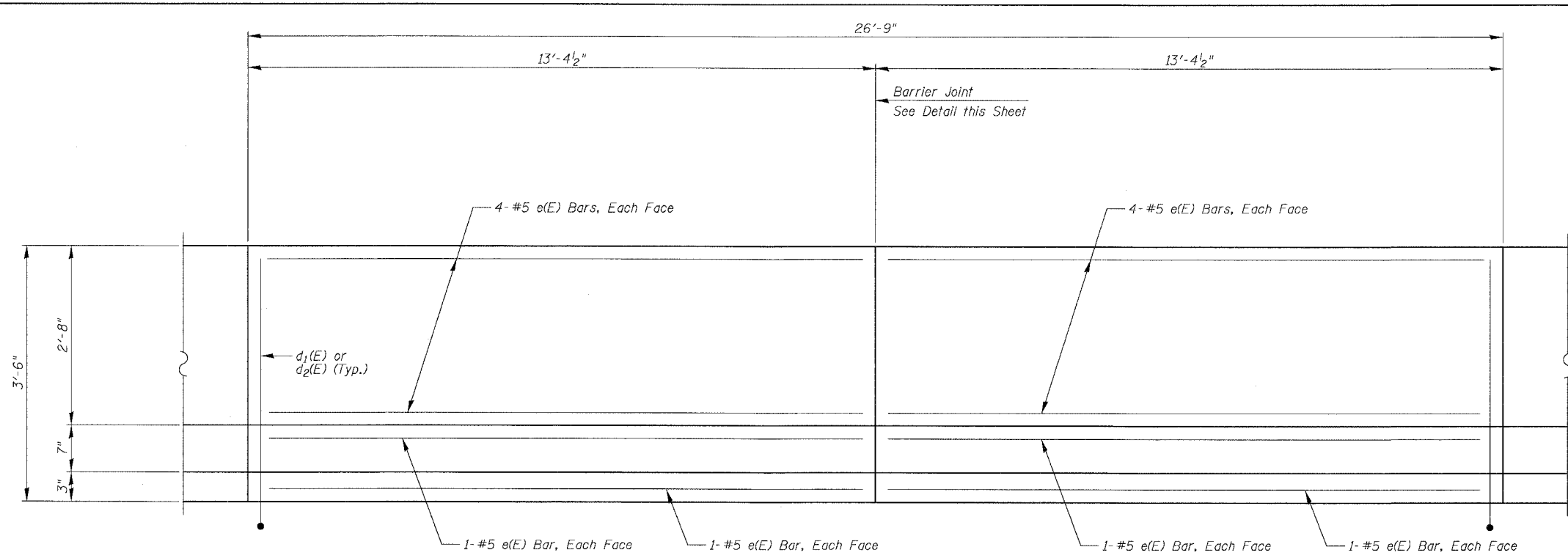


F.A.I.	SECTION	COUNTY	TOTAL SHEETS	SHEET NO.
94/90	*	COOK	556	437
STA.	TO STA.			
FED. ROAD DIST. NO.	ILLINOIS	FED. AID PROJECT		
62300		*1818, ETC, 2324.6-1PR-8		

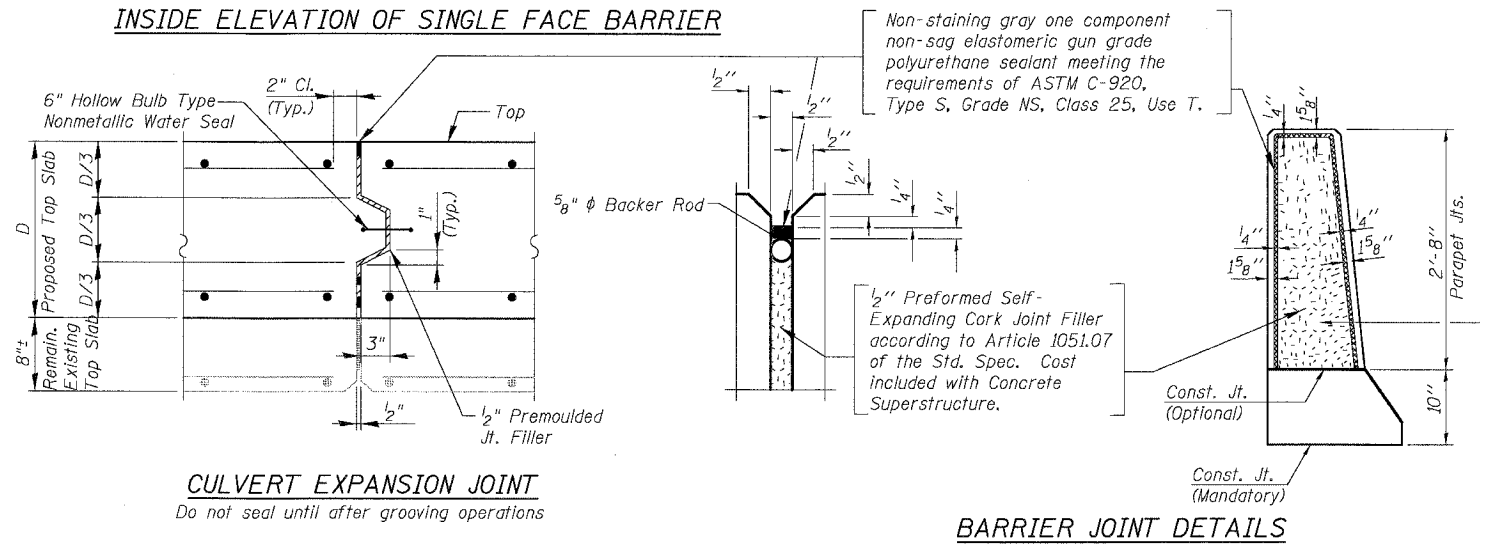
**TOP SLAB  
BILL OF MATERIAL**

Bar	No.	Size	Length	Shape
a(E)	27	#5	10'-2"	—
a <sub>1</sub> (E)	27	#5	23'-8"	—
a <sub>2</sub> (E)	27	#5	21'-10"	—
a <sub>3</sub> (E)	29	#5	10'-2"	—
a <sub>4</sub> (E)	29	#5	23'-8"	—
a <sub>5</sub> (E)	29	#5	19'-8"	—
a <sub>6</sub> (E)	27	#6	4'-6"	—
b(E)	79	#7	26'-5"	—
b <sub>1</sub> (E)	79	#7	8'-0"	—
b <sub>2</sub> (E)	157	#7	28'-1"	—
b <sub>3</sub> (E)	79	#7	4'-0"	—
b <sub>4</sub> (E)	5	#5	26'-5"	—
d <sub>1</sub> (E)	27	#6	5'-7"	L
d <sub>2</sub> (E)	27	#5	5'-9"	L
e(E)	24	#5	13'-0"	—
Concrete Superstructure		Cu. Yd.	104.1	
Bridge Deck Grooving		Sq. Yd.	212	
Protective Coat		Sq. Yd.	232	
Reinforcement Bars, Epoxy Coated		Pound	19,260	
Bar Splicers		Each	133	
CTA Fence		Foot	27	

Reinforcement bars designated (E) shall be epoxy coated.  
CTA Fence not shown for clarity. See Roadway Plans for fence details.  
Cost of water seal, P.J.F. and Sealant included in the cost of Concrete Superstructure.

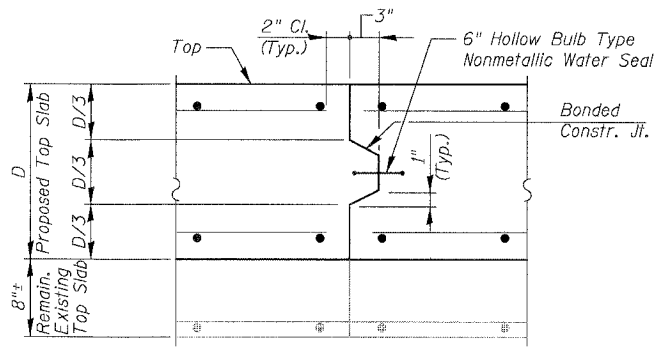


**INSIDE ELEVATION OF SINGLE FACE BARRIER**

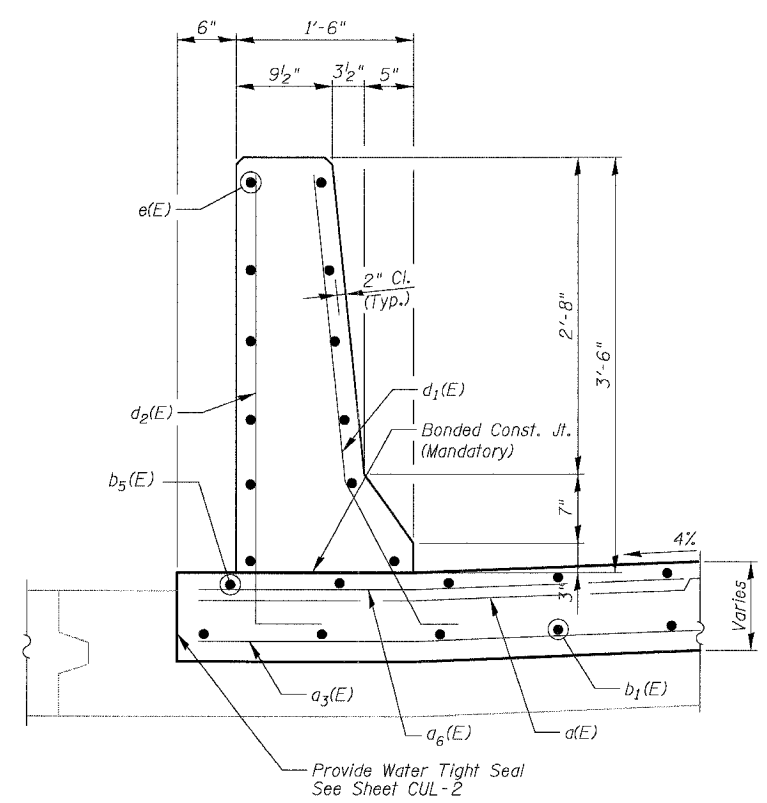


**BARRIER JOINT DETAILS**

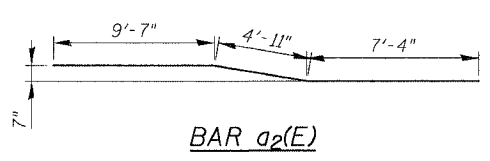
**CULVERT EXPANSION JOINT**  
Do not seal until after grooving operations



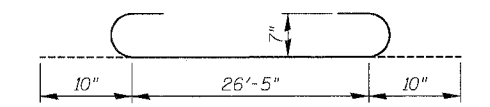
**CULVERT CONSTRUCTION JOINT**



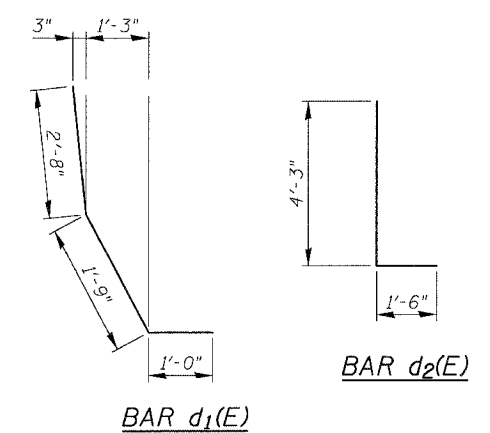
**SECTION THRU SINGLE FACE BARRIER**



**BAR a<sub>2</sub>(E)**



**BAR b<sub>2</sub>(E)**



**BAR d<sub>1</sub>(E)**

**BAR d<sub>2</sub>(E)**

**BOWMAN, BARRETT & ASSOCIATES INC.**  
CONSULTING ENGINEERS  
Chicago, Illinois  
312.228.0100  
www.bbainc.com

REVISIONS	
NAME	DATE

SHEET CUL-5 OF CUL-14

ILLINOIS DEPARTMENT OF TRANSPORTATION  
F.A.I. 94/90 (DAN RYAN EXPRESSWAY)  
31ST STREET TO 71ST STREET  
NB EXPRESS LANE RECONSTRUCTION  
MWRD CULVERT, N. OF 39TH ST.,  
COOK COUNTY, S.N. 016-2625  
**TOP SLAB DETAILS**

SCALE: N.T.S. DRAWN BY: MTR  
DATE: 07/07/05 CHECKED BY: BLU

6/24/2005 9:18:22 AM