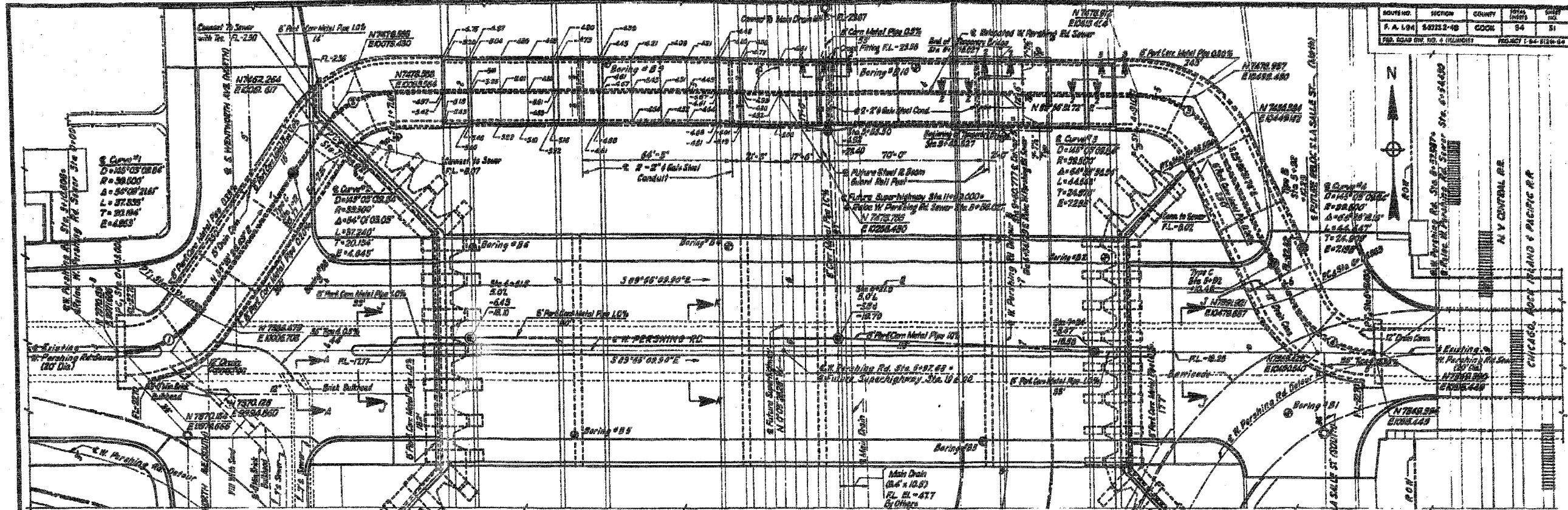
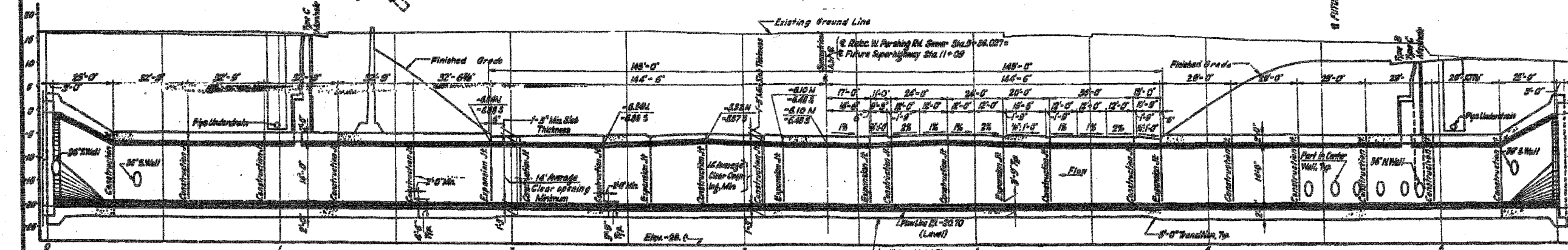


F.A.I.	SECTION	COUNTY	TOTAL SHEETS	SHEET NO.
94/90		COOK	556	443
STA.	TO STA.			
FED. ROAD DIST. NO.	ILLINOIS FED. AID PROJECT			
62300	11818, ETC, 2324.6-IPR-8			



PLAN
SCALE: 1" = 20'



PROFILE
SCALE: HORIZONTAL 1" = 20' VERTICAL 1" = 10'

GENERAL NOTES:
 Design Specifications: AASHTO 1987 Modified; ARRA 1995 Modified; State of Illinois, Division of Highways 1985.
 Design Load Loading: AASHTO HS20-44 or Alternate designated in RPA 20-4, Sec 4c; and Chicago Transit Authority, April 23, 1982.

NOTES:
 1. Sewer has slab Sta. 1+82.05 to 4+81.05 will be replaced by below.
 2. For Soil Bearing Data, see sheet S-1 & S-4.

CITY OF CHICAGO
 DEPARTMENT OF PUBLIC WORKS
 BUREAU OF ENGINEERING
SOUTH ROUTE SUPERHIGHWAY

SHEET CUL-11 OF CUL-14

BOWMAN, BARRETT & ASSOCIATES INC.
 CONSULTING ENGINEERS
 Chicago, Illinois
 312.228.0100
 www.bbainc.com

FOR INFORMATION ONLY

REVISIONS	NAME	DATE

ILLINOIS DEPARTMENT OF TRANSPORTATION
 F.A.I. 94/90 (DAN RYAN EXPRESSWAY)
 31ST STREET TO 71ST STREET
 NB EXPRESS LANE RECONSTRUCTION
 MWRD CULVERT, N. OF 39TH ST.,
 COOK COUNTY, S.N. 016-2625
 EXISTING PLAN AND ELEVATION
 SCALE: NTS DRAWN BY: BDC
 DATE: 07/07/05 CHECKED BY: BLU