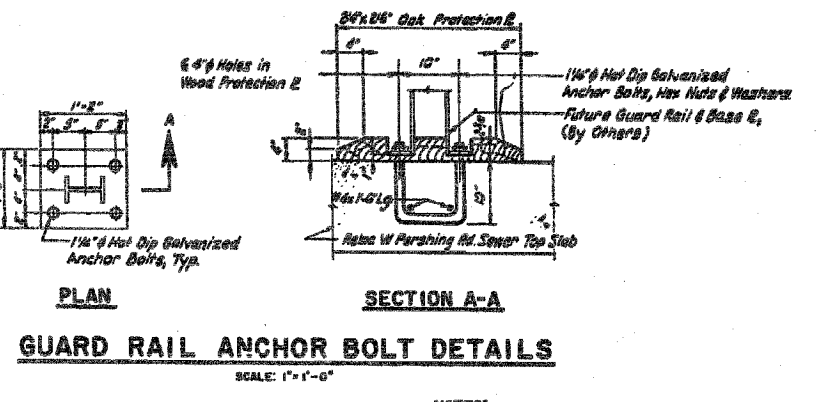
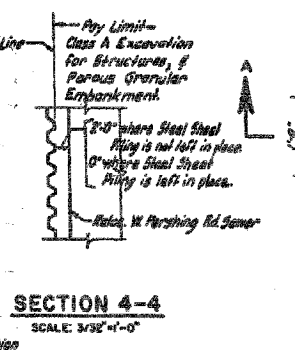
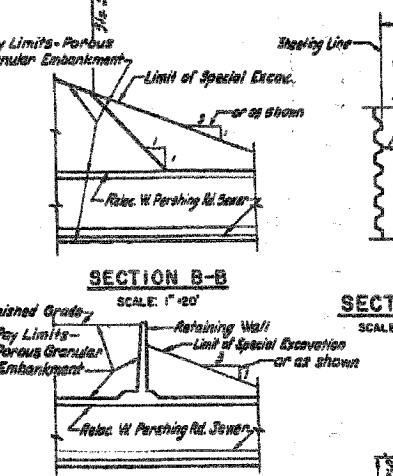
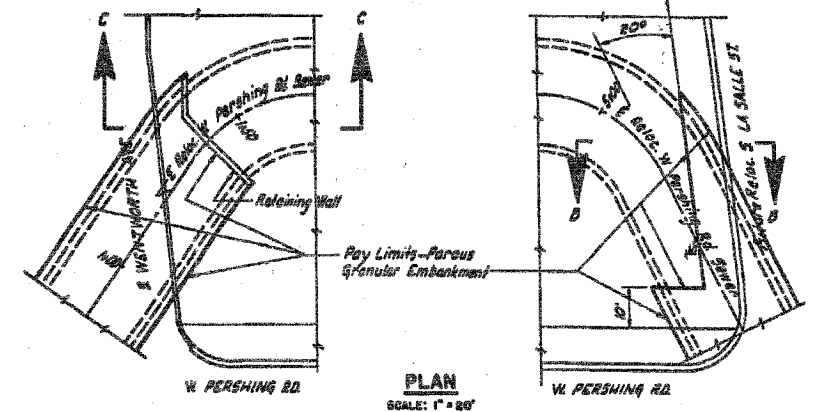
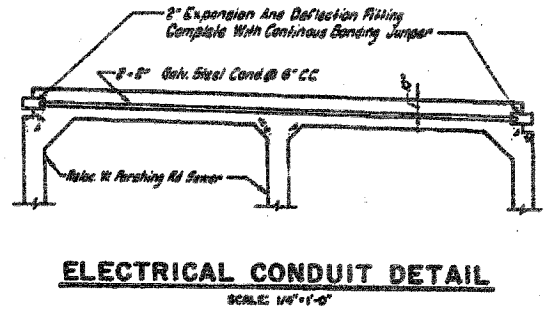
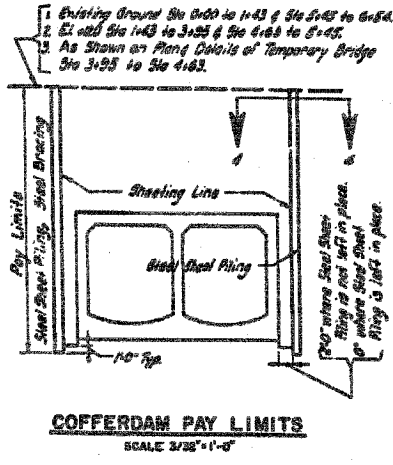
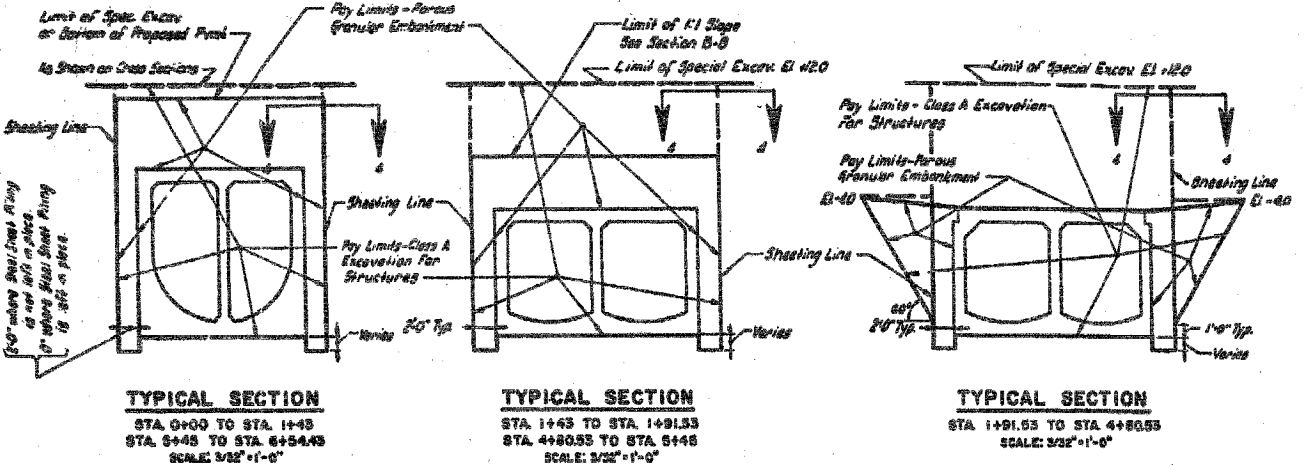
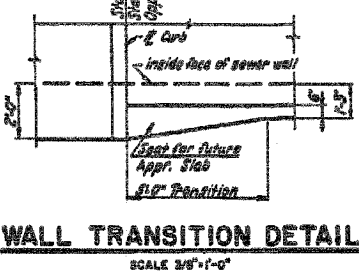
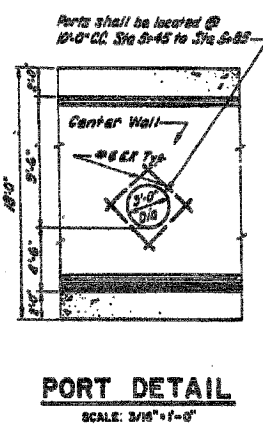
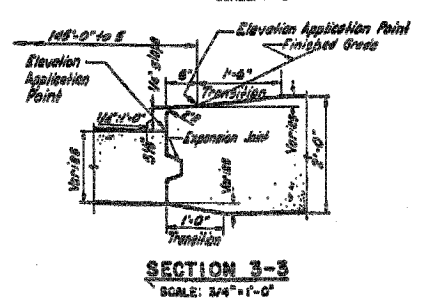
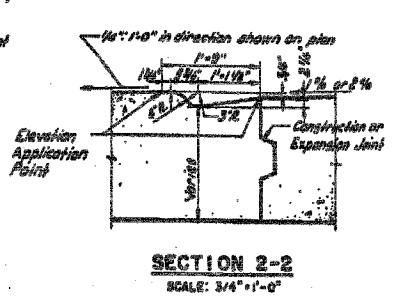
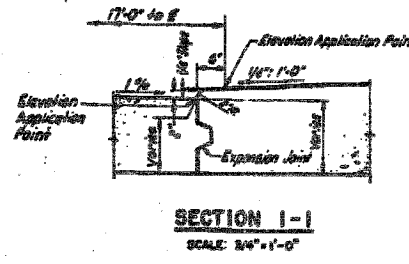


F.A.I.	SECTION	COUNTY	TOTAL SHEETS	SHEET NO.
94/90		COOK	556	445
STA.	TO STA.			
FED. ROAD DIST. NO.	ILLINOIS	FED. AID PROJECT		
62300		*1818, ETC, 2324.6-1PR-8		

ROUTE NO.	SECTION	COUNTY	TOTAL SHEETS	SHEET NO.
F.A.I. 94	5-2322-4B	COOK	54	54
FED. ROAD DIST. NO. 2 (ILLINOIS)		PROJECT I. 94, 312W-24		



- NOTES:**
1. For Location of Sections 1-1, 2-2, 3-3, see sheet 5-5.
 2. For Details of Construction & Expansion Joints, see sheet 5-6.
 3. For Location of Electrical Conduit & Guard Rail Anchor Bolts, see sheet 5-8.



CITY OF CHICAGO
DEPARTMENT OF PUBLIC WORKS
BUREAU OF ENGINEERING
SOUTH ROUTE SUPERHIGHWAY
SECTION 5-2322-4B
W PERSHING ROAD BRIDGE
SEWER MISCELLANEOUS
DETAILS

SHEET CUL-13 OF CUL-14

REVISIONS	
NAME	DATE

ILLINOIS DEPARTMENT OF TRANSPORTATION
F.A.I. 94/90 (DAN RYAN EXPRESSWAY)
31ST STREET TO 71ST STREET
NB EXPRESS LANE RECONSTRUCTION
MWRD CULVERT, N. OF 39TH ST.,
COOK COUNTY, S.N. 016-2625
EXISTING GENERAL DETAILS

SCALE: NTS
DATE: 07/07/05

DRAWN BY: BDC
CHECKED BY: BLU

FOR INFORMATION ONLY

BOWMAN, BARRETT & ASSOCIATES INC.
CONSULTING ENGINEERS
Chicago, Illinois
312.228.0100
www.bbainc.com

6/24/2005 9:35:27 AM