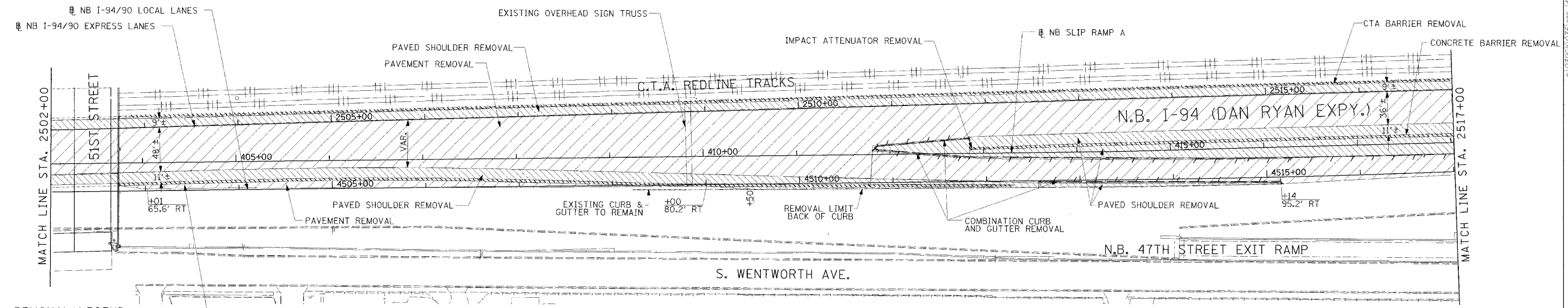
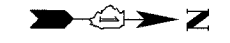


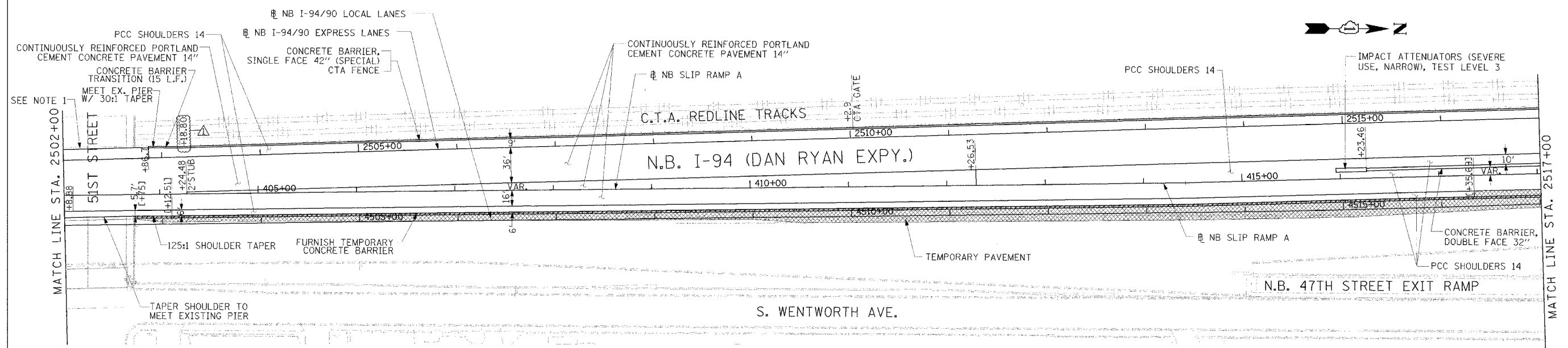
F.A.I. RTE.	SECTION	COUNTY	TOTAL SHEETS	SHEET NO.
94/90		COOK	556	55
STA.	TO STA.			
FED. ROAD DIST. NO.	ILLINOIS	FED. AID PROJECT		
62300	• (1818, ETC, 2324.6-1)R-8			



- REMOVAL LEGEND**
- PAVEMENT REMOVAL
  - PAVED SHOULDER REMOVAL
  - COMBINATION CURB AND GUTTER REMOVAL
  - CONCRETE BARRIER OR GUARD RAIL REMOVAL
  - CONCRETE BARRIER REMOVAL

**NOTE:**  
 1. THE LOCATION OF PAVEMENT CONSTRUCTED IN PREVIOUS CONTRACTS IS BASED OFF OF CONTRACT PLAN DRAWINGS. THE CONTRACTOR MUST VERIFY LIMITS OF PREVIOUS CONSTRUCTION IN THE FIELD.

**EXISTING CONDITIONS & REMOVALS**



**NOTE:**  
 1. BRIDGE OVER EXPRESS LANES OMITTED FOR CLARITY.

- LEGEND**
- TEMPORARY PAVEMENT (INTERSTATE)/TEMPORARY SHOULDER
  - TEMPORARY CONCRETE BARRIER

**STATIONING**

- [+##.##] STATION PROVIDED FROM THE NB I-90/94 EXPRESS LANES
- [+###.##] STATION PROVIDED FROM THE NB I-90/94 LOCAL LANES
- [+###.##] STATION PROVIDED FROM THE SLIP RAMP

REVISIONS	
NAME	DATE
ADDENDUM 1	8/12/05

ILLINOIS DEPARTMENT OF TRANSPORTATION  
 F.A.I. 94/90 (DAN RYAN EXPRESSWAY)  
 31ST STREET TO 71ST STREET  
 NB EXPRESS LANE RECONSTRUCTION  
 EXISTING AND PROPOSED PLAN  
 NORTHBOUND STA. 2502+00 TO STA. 2517+00

SCALE: 1"=50'  
 DATE: 7/7/05

DRAWN BY: TAI  
 CHECKED BY: PJM



ONE NORTH FRANKLIN  
 CHICAGO, IL 60606  
 PHONE: (312) 251-3000  
 FAX: (312) 251-3015  
 WEB: WWW.EKCORP.COM

P:\0300503035\con\_14815\road\N-Exp\40202e.dwg 08/29/2005 04:43:47 PM RDY-10