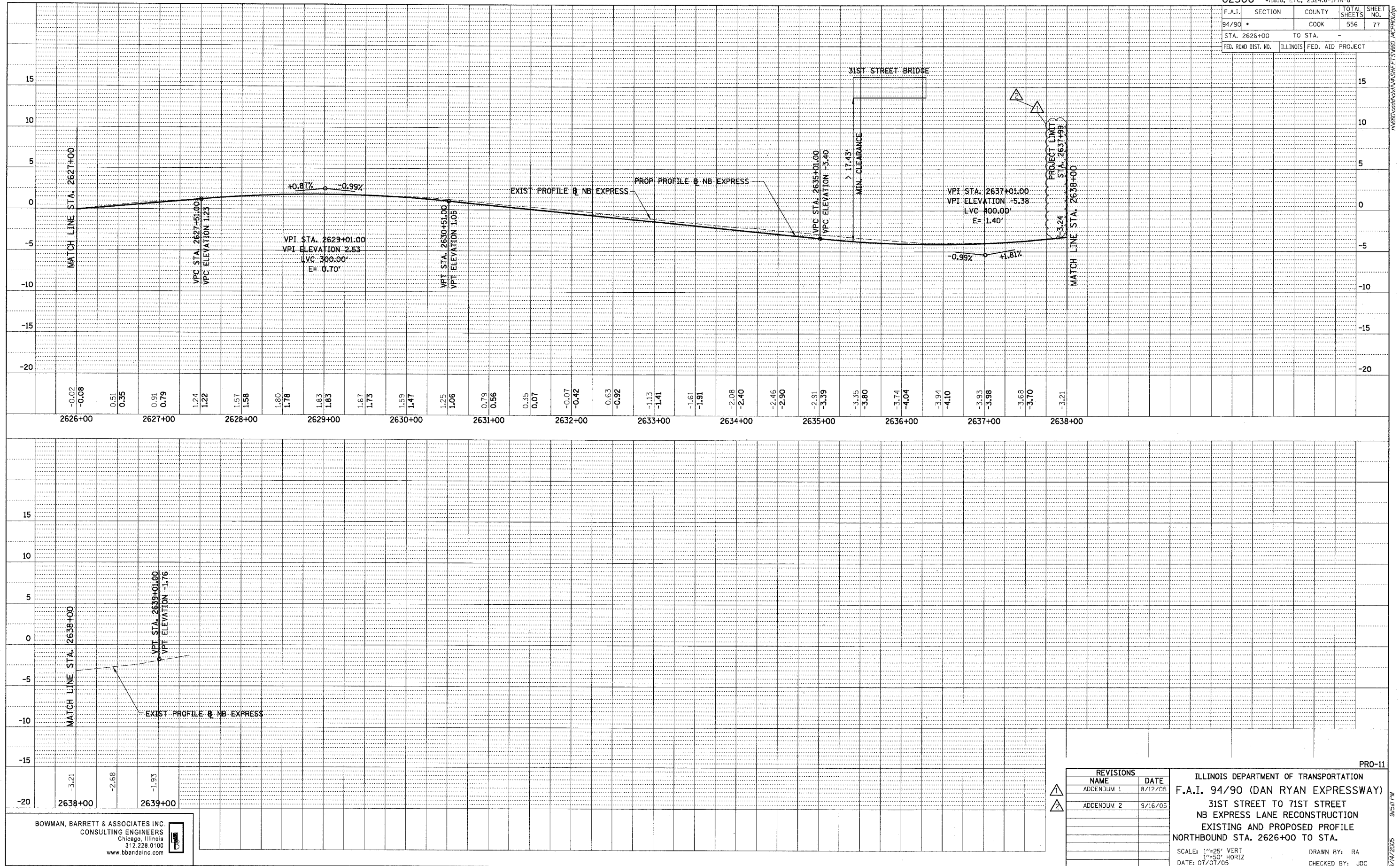


F.A.I.	SECTION	COUNTY	TOTAL SHEETS	SHEET NO.
94/90 *		COOK	556	77
STA. 2626+00		TO STA. -		
FED. ROAD DIST. NO.	ILLINOIS	FED. AID PROJECT		

PLAN	SURVEYED	BY	DATE
NOTE BOOK NO.	ALIGNED		
	CHECKED		
	BY		
	FILE NAME		

PLAN	SURVEYED	BY	DATE
NOTE BOOK NO.	ALIGNED		
	CHECKED		
	BY		
	FILE NAME		



REVISIONS	
NAME	DATE
ADDENDUM 1	8/12/05
ADDENDUM 2	9/16/05

ILLINOIS DEPARTMENT OF TRANSPORTATION  
 F.A.I. 94/90 (DAN RYAN EXPRESSWAY)  
 31ST STREET TO 71ST STREET  
 NB EXPRESS LANE RECONSTRUCTION  
 EXISTING AND PROPOSED PROFILE  
 NORTHBOUND STA. 2626+00 TO STA.

SCALE: 1"=25' VERT  
 1"=50' HORIZ  
 DATE: 07/07/05

DRAWN BY: RA  
 CHECKED BY: JDC

BOWMAN, BARRETT & ASSOCIATES INC.  
 CONSULTING ENGINEERS  
 Chicago, Illinois  
 312.228.0100  
 www.bbandainc.com