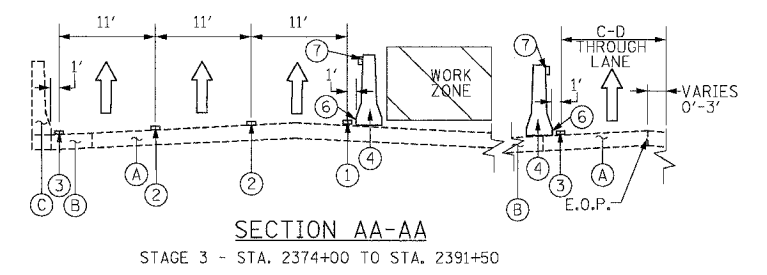
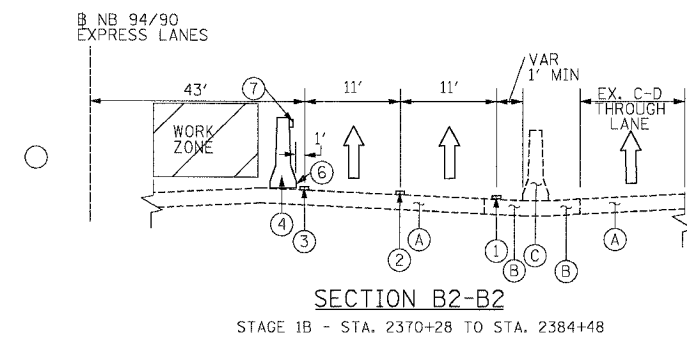
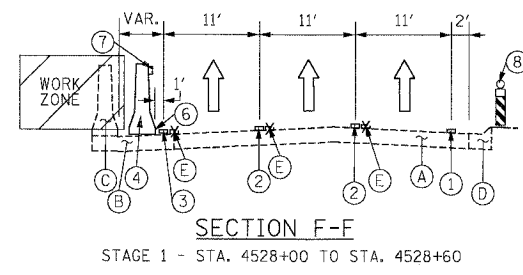
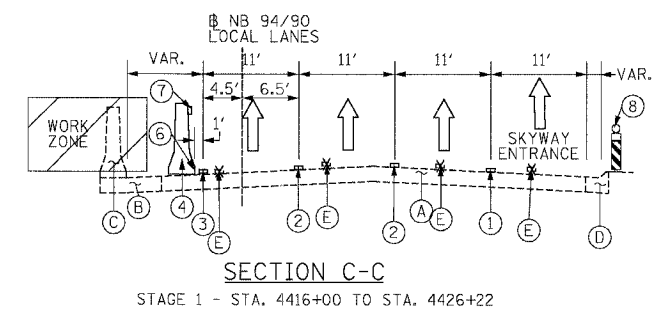
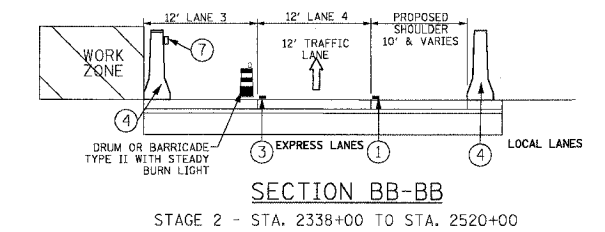
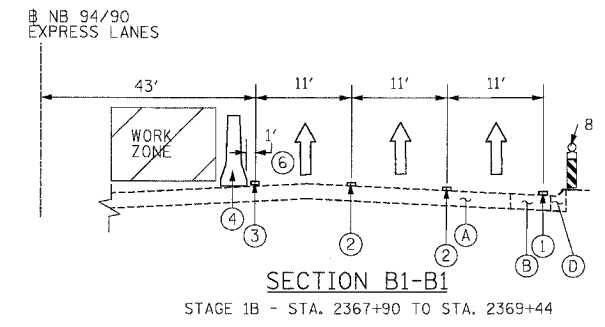
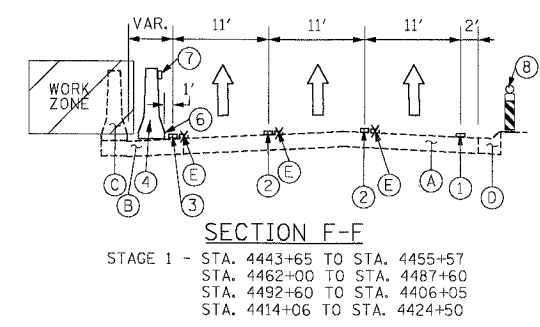
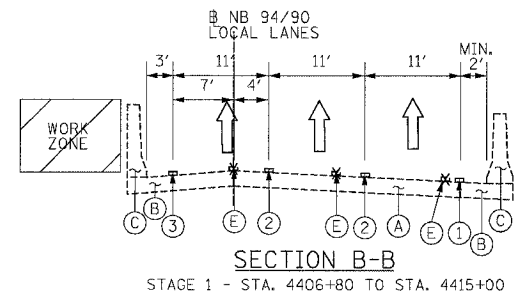
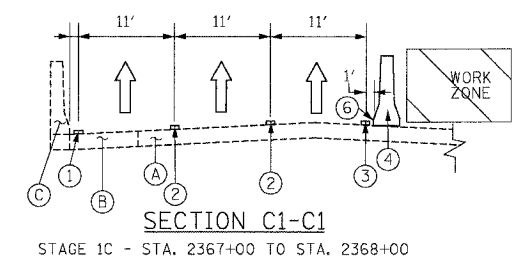
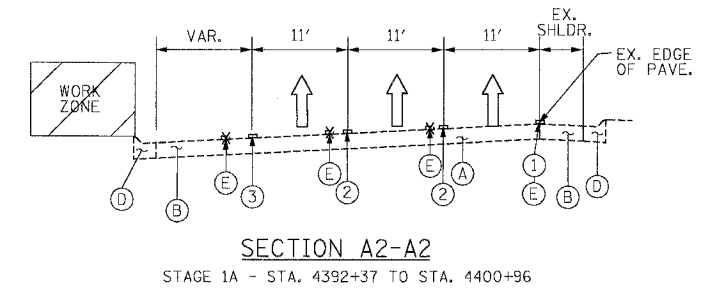
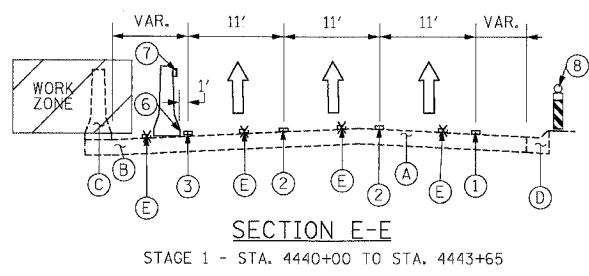
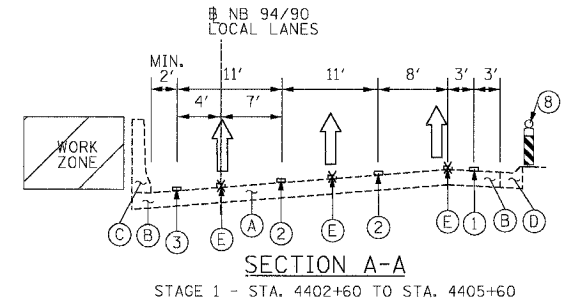
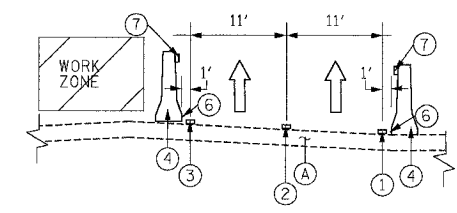
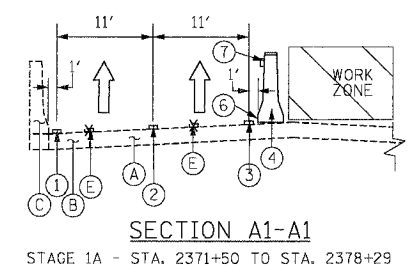
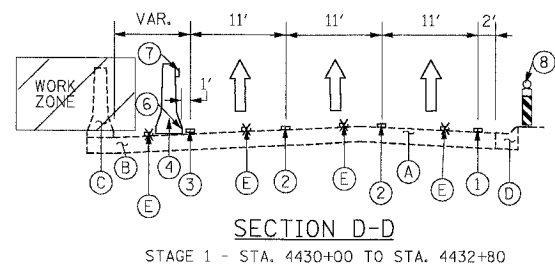


F.A.I. RTE.	SECTION	COUNTY	TOTAL SHEETS	SHEET NO.
94/90		COOK	556	82
STA.	TO STA.			
FED. ROAD DIST. NO.	ILLINOIS	FED. AID PROJECT		
62300	• (1818, ETC, 2324.6-1PIR-8			



- ① PAVEMENT MARKING - LINE 4" (WHITE)
- ② PAVEMENT MARKING - LINE 5" (SHITE, SKIP DASH)
- ③ PAVEMENT MARKING - LINE 4" (YELLOW)
- ④ TEMPORARY CONCRETE BARRIER
- ⑤ TEMPORARY PAVEMENT
- ⑥ TEMPORARY PAVEMENT MARKING - LINE 6"
- ⑦ MONODIRECTIONAL PRISMATIC BARRIER REFLECTOR
- ⑧ VERTICAL PANEL WITH STEADY BURN LIGHT

- EXISTING LEGEND**
- (A) PAVEMENT
  - (B) SHOULDER
  - (C) BARRIER WALL
  - (D) CURB & GUTTER
  - (E) PAVEMENT MARKING

REVISIONS	
NAME	DATE

ILLINOIS DEPARTMENT OF TRANSPORTATION  
 F.A.I. 94/90 (DAN RYAN EXPRESSWAY)  
 31ST STREET TO 71ST STREET  
 NB EXPRESS LANE RECONSTRUCTION  
 MAINTENANCE OF TRAFFIC  
 TYPICAL SECTIONS  
 NORTHBOUND DAN RYAN

SCALE: NONE  
 DATE: 7/7/05

DRAWN BY: TAI  
 CHECKED BY: PJM

**Edwards AND Kelcey**  
 ONE NORTH FRANKLIN  
 CHICAGO, IL 60606  
 PHONE: (312) 251-3000  
 FAX: (312) 251-3015  
 WEB: WWW.EKCORP.COM