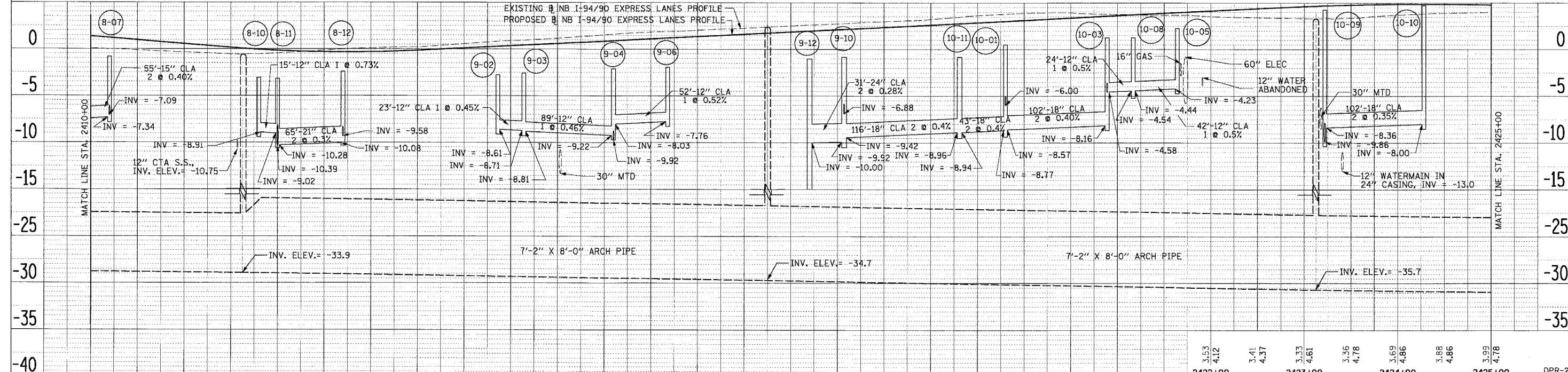
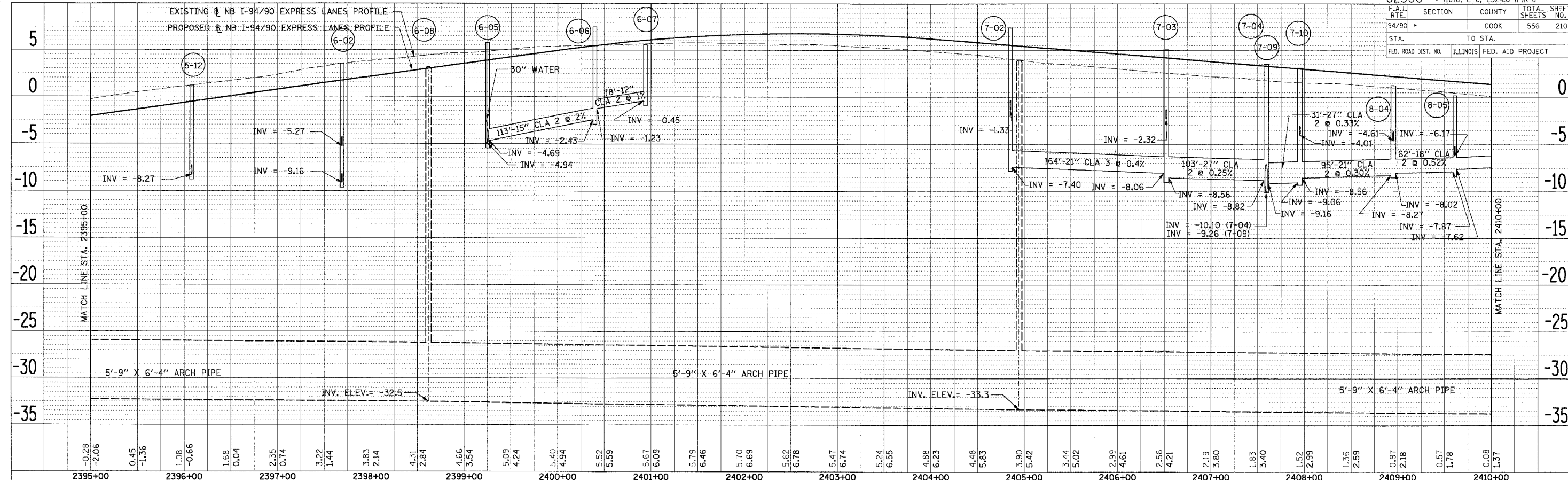


F.A.I. SECTION	COUNTY	TOTAL SHEETS	SHEET NO.
94/90	COOK	556	210
STA. TO STA.		FED. ROAD DIST. NO. ILLINOIS FED. AID PROJECT	



DATE	BY
DATE	BY

DATE	BY
DATE	BY

0.08	1.37	-0.13	0.97	-0.35	0.56	0.08	1.37	3.53	4.12	3.41	4.37	3.33	4.61	3.36	4.78	3.69	4.86	3.88	4.86	3.99	4.78																				
2410+00	2411+00	2412+00	2413+00	2414+00	2415+00	2416+00	2417+00	2418+00	2419+00	2420+00	2421+00	2422+00	2423+00	2424+00	2425+00																										
-0.56	0.16	-0.46	-0.16	-0.15	-0.32	0.12	-0.32	0.22	-0.15	0.57	0.10	0.91	0.35	1.17	0.60	1.56	0.85	1.84	1.11	2.04	1.36	2.26	1.61	2.52	1.86	2.73	2.11	2.99	2.36	3.23	2.61	3.62	2.86	3.87	3.11	3.93	3.37	3.74	3.62	3.67	3.87

Edwards and Kelcey
 ONE NORTH FRANKLIN
 CHICAGO, IL 60606
 PHONE: (312) 251-3000
 FAX: (312) 251-3015
 WEB: WWW.EKCORP.COM

NO.	REVISIONS	DATE

ILLINOIS DEPARTMENT OF TRANSPORTATION
 F.A.I. 94/90 (DAN RYAN EXPRESSWAY)
 31ST STREET TO 71ST STREET
 NB EXPRESS LANE RECONSTRUCTION
 DRAINAGE PROFILES
 NORTHBOUND STA. 2395+00 TO STA. 2425+00

SCALE: 1" = 5' 0"
 1" = 50' 0"
 DATE: 7/7/05

DRAWN BY: LPN
 CHECKED BY: PJM

14815VACADV\Final\40307a.dwg
 06/24/2005 04:06:21 PM