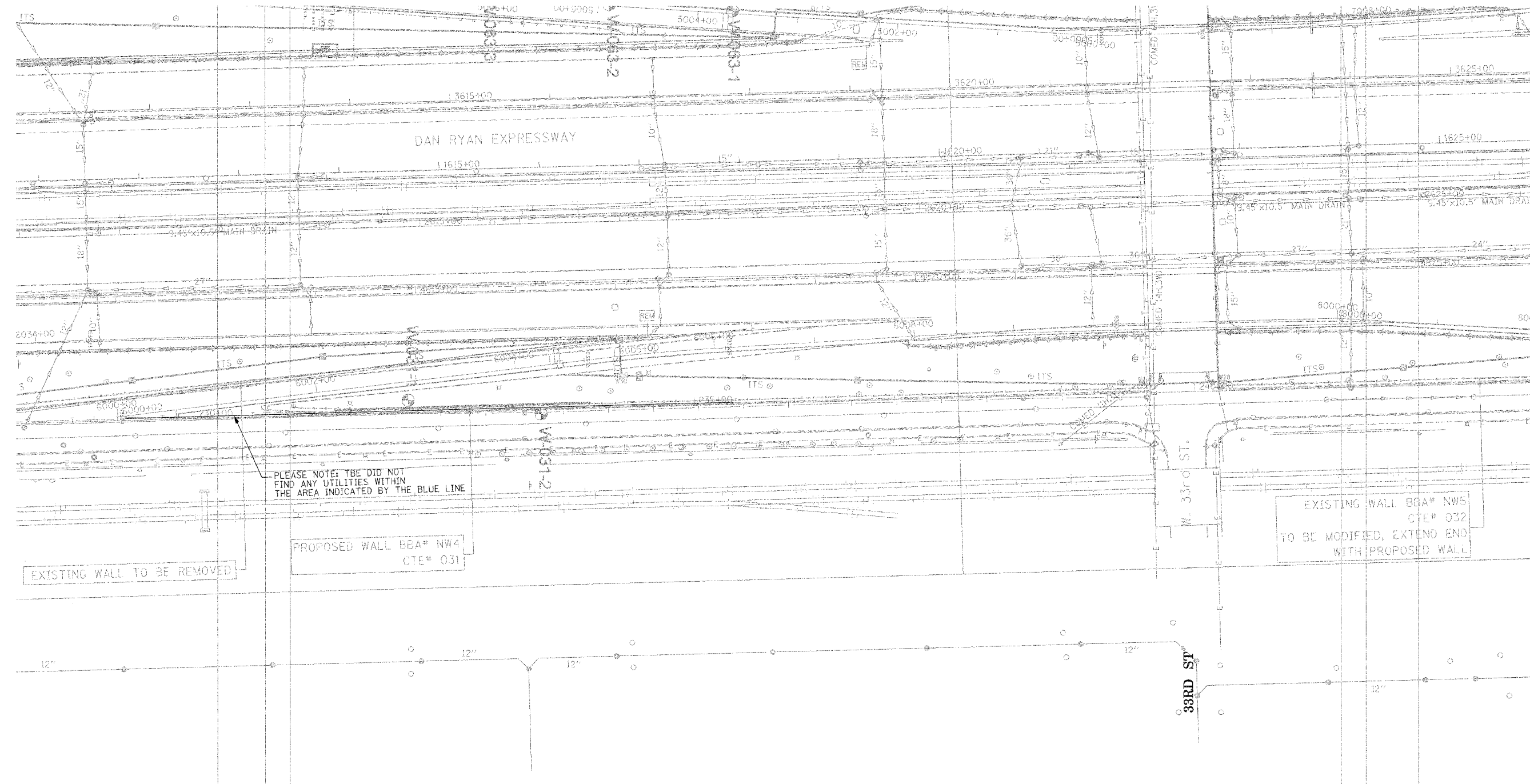
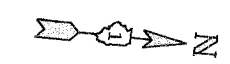


F.A. RTE.	SECTION	COUNTY	TOTAL SHEETS	SHEET NO.
	0516J.11717 & 1818-6	Cook	556	238
STA.	TO STA.			
FED. ROAD DIST. NO.	ILLINOIS	FED. AID PROJECT		



PLEASE NOTE: TBE DID NOT FIND ANY UTILITIES WITHIN THE AREA INDICATED BY THE BLUE LINE

EXISTING WALL TO BE REMOVED

PROPOSED WALL BEA# NW4
CTE# 031

EXISTING WALL BBA# NW5
CTE# 032
TO BE MODIFIED, EXTEND END
WITH PROPOSED WALL

TBE CIVIL ENGINEERING * TRANSPORTATION * ENVIRONMENTAL * PLANNING * UTILITY ENGINEERING/LOCATING
 SOUTHERN REGION: FL, GA, SC, NC
 NORTHERN REGION: IL, IN, MI, OH, MD, NJ, NY
 PA, VA, CANADA
 WESTERN REGION: AZ, NV, NM, TX, CA, OR, UT, WA
 IL09500164, 167, 168, 170, 171, 179, 180, 182, 204,
 205, 206, 211, 212, 219, 221, 225, 226, 227, 228, 230, 232
 TBE SUE PAGE NO: 35 of 36
 Checked by: *[Signature]*
 SUE Quality Level "A" : Test Holes
 SUE Quality Level "B" : Designating

—TS—	—TS—	TRAFFIC SIGNAL
—SL—	—SL—	STREET LIGHT
—COCE—	—COCE—	CITY OF CHICAGO ELECTRIC
—T—	—T—	TELEPHONE
—W—	—W—	WATER
—G—	—G—	GAS
—CTV—	—CTV—	CABLE TELEVISION
—FO—	—FO—	FIBER OPTIC
—E—	—E—	ELECTRIC
●	●	TEST HOLE

Utilities shown on these plans as depicted in the legend have been investigated by TBE Group, Inc in accordance with SUE Industry Standards. All other information shown has been provided to TBE Group, Inc by others.

TBE could not locate buried utilities directly beneath the expressway due to traffic and safety issues.

205 W. WACKER DRIVE
 SUITE 1020
 CHICAGO, IL 60606
 (312) 704-1970

REVISIONS	
NAME	DATE

ILLINOIS DEPARTMENT OF TRANSPORTATION
 SUE Investigation of Underground Utilities
 I-90/I-94 Dan Ryan Expressway from
 I-57, to 69th Street
 Contract Number: 62590, 62592, 62594
 SQL "B" DATE : 7/22/04
 DRAWN BY : KLC
 SCALE : 1" = 50'