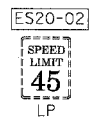
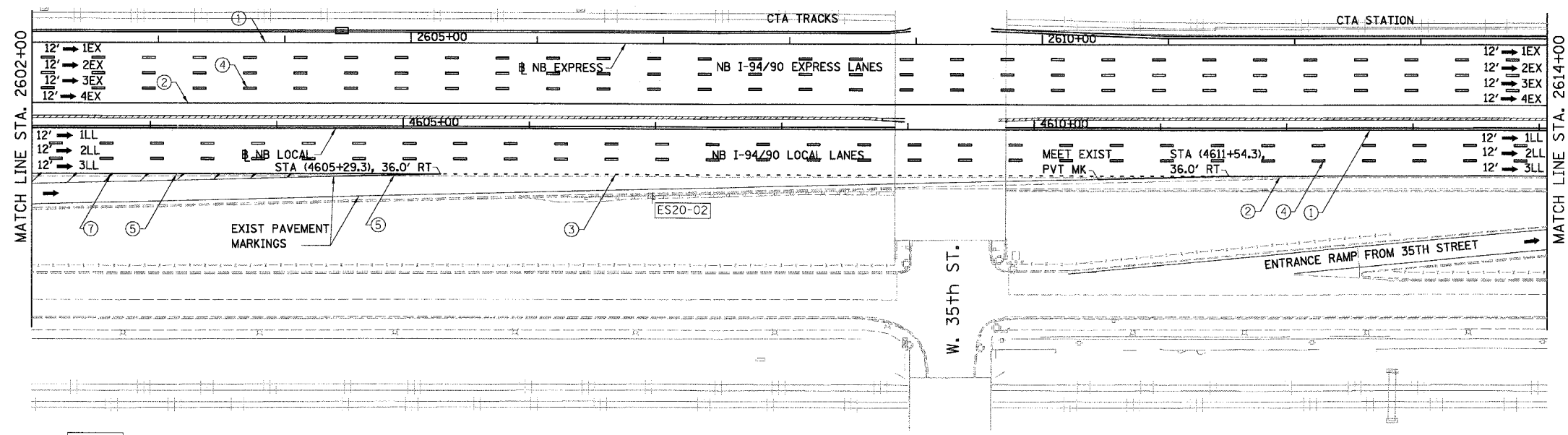


F.A.I.	SECTION	COUNTY	TOTAL SHEETS	SHEET NO.
94/90	*	COOK	556	276
STA. 2602+00		TO STA. 2626+00		
FED. ROAD DIST. NO.	ILLINOIS	FED. AID PROJECT		
62300	*0818, ETC.	2324.6-IPR-8		



- LEGEND**
- ① LINE 4" (YELLOW EDGE LINE)
 - ② LINE 4" (WHITE EDGE LINE)
 - ③ LINE 4" (SKIP DASH, 6' SKIP - 2' DASH, WHITE)
 - ④ LINE 5" (SKIP DASH, 30' SKIP - 10' DASH, WHITE)
 - ⑤ LINE 8" (WHITE GORE LINE)
 - ⑥ LINE 8" (SKIP DASH, 12' SKIP - 3' DASH, WHITE)
 - ⑦ LINE 12" (DIAGONAL, 30' C-C)
 - ⑧ LINE 12" (DIAGONAL, 500' C-C)
 - ⑨ LETTERS AND SYMBOLS

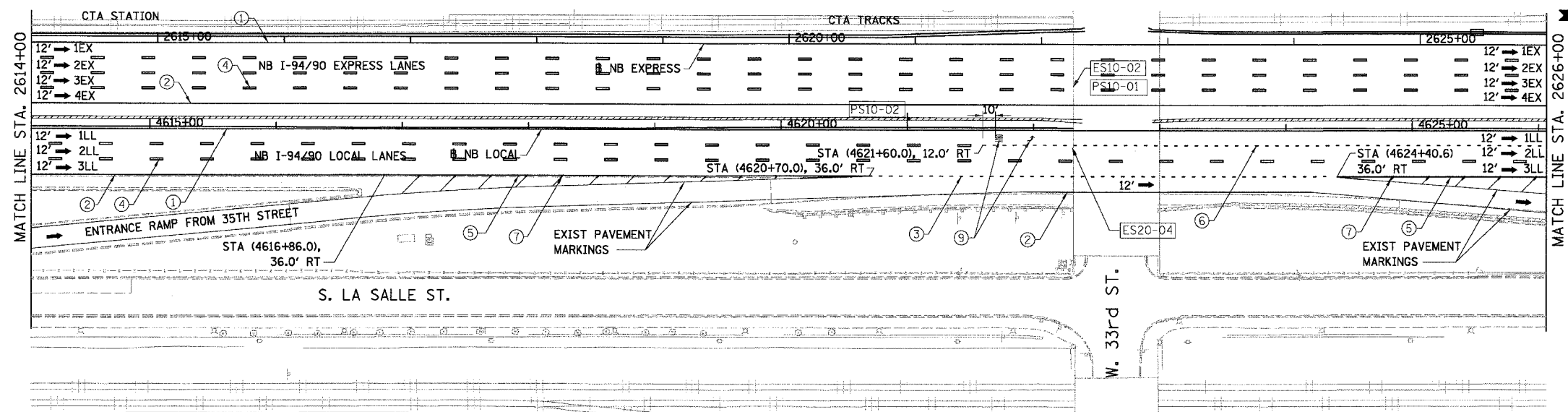
- ESx-xx EXISTING SIGNS
- TSx-xx TEMPORARY SIGNS
- PSx-xx PROPOSED SIGNS

STATIONING

+++ STATION PROVIDED FROM THE I-90/94 EXPRESS LANES

(+ + +, .) STATION PROVIDED FROM THE I-90/94 LOCAL LANES

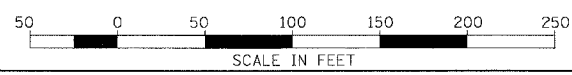
[+ + +, .] STATION PROVIDED FROM THE SLIP RAMP



NOTE:

ALL PAVEMENT MARKINGS ON THIS SHEET WILL BE EPOXY PAVEMENT MARKING, UNLESS OTHERWISE NOTED.

REVISIONS		ILLINOIS DEPARTMENT OF TRANSPORTATION F.A.I. 94/90 (DAN RYAN EXPRESSWAY) 31ST STREET TO 71ST STREET NB EXPRESS LANE RECONSTRUCTION PAVEMENT MARKING AND SIGNING PLAN NORTHBOUND STA. 2602+00 TO STA. 2626+00
NAME	DATE	
		SCALE: 1"=50'
		DATE: 07/07/05
		DRAWN BY: RA
		CHECKED BY: RS



BOWMAN, BARRETT & ASSOCIATES INC
CONSULTING ENGINEERS
Chicago, Illinois
312.228.0100
www.bbainc.com

180161094L054.97
STA. 4622+31
SIGN PANEL-TYPE 3
OVERHEAD SIGN STRUCTURE - BRIDGE MOUNTED
OVERHEAD SIGN STRUCTURE WALKWAY

STA. 4622+31±
REMOVE OVERHEAD SIGN
STRUCTURE-BRIDGE MOUNTED

PMK-10
6/24/2005 11:01:57 AM