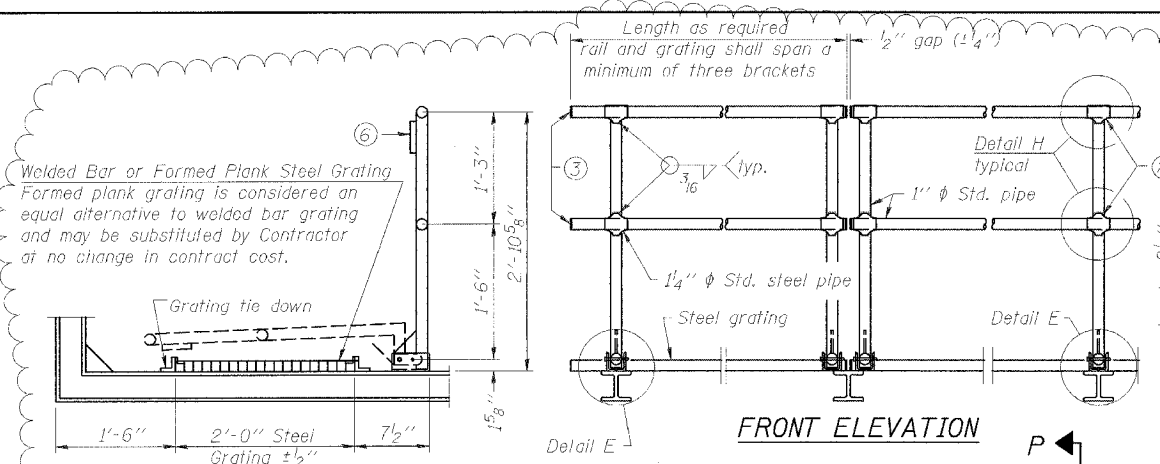


STATE OF ILLINOIS
DEPARTMENT OF TRANSPORTATION

ROUTE NO.	SECTION	COUNTY	SHEET NO.	SHEET NO.
94/90	*	COOK	556	304
FED. ROAD DIST. NO. ILLINOIS FED. AID PROJECT-				

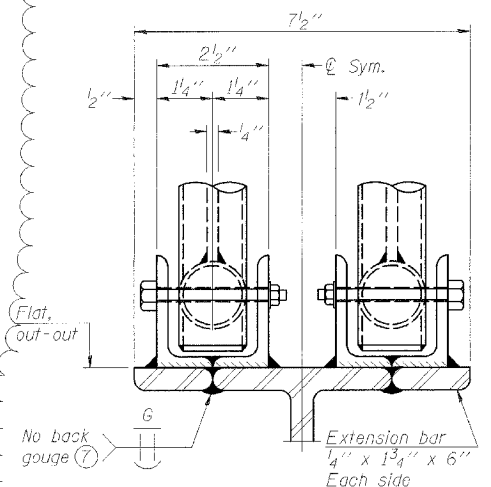


SIDE ELEVATION

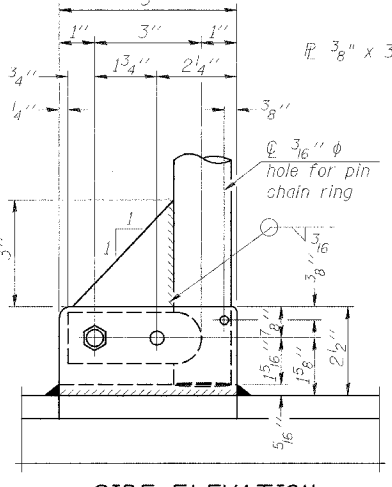
FRONT ELEVATION

DETAIL D HANDRAIL

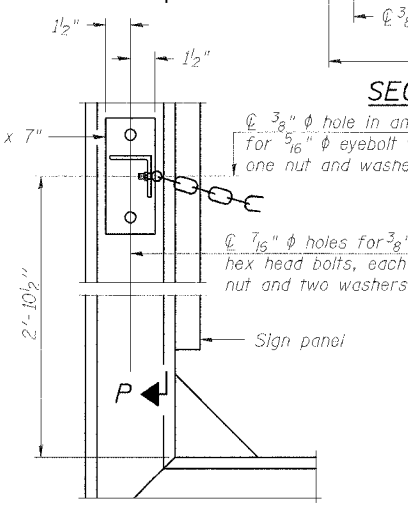
SECTION P-P



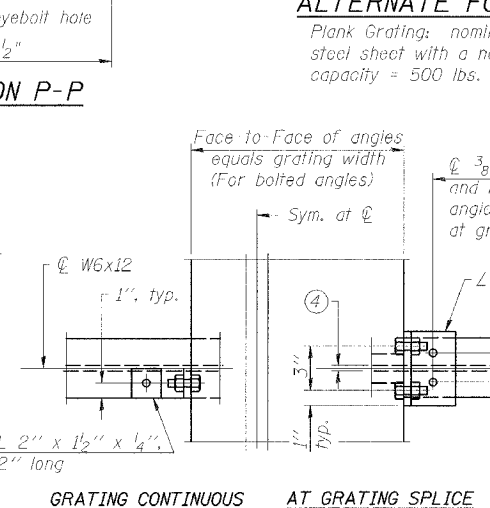
ELEVATION AT HANDRAIL JOINT



SIDE ELEVATION

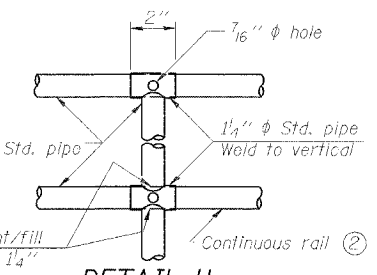


SAFETY CHAIN ATTACHMENT



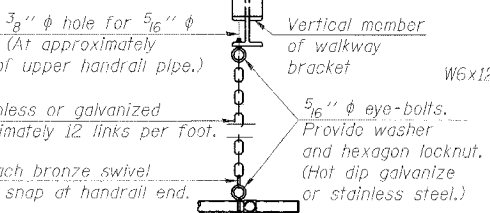
GRATING CONTINUOUS AT GRATING SPLICE

VIEW W-W



DETAIL H

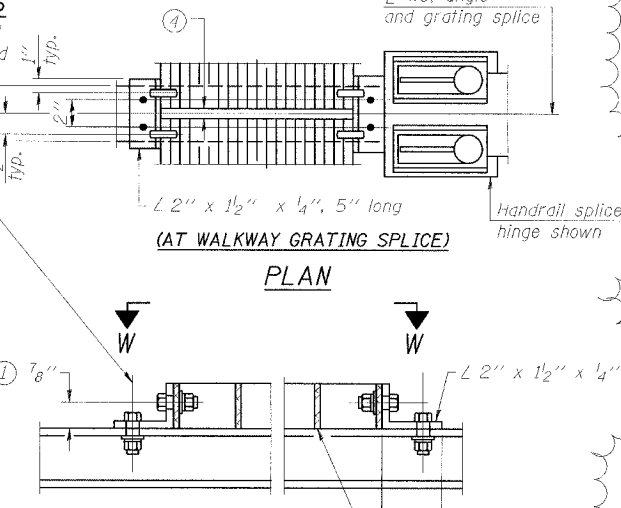
SAFETY CHAIN



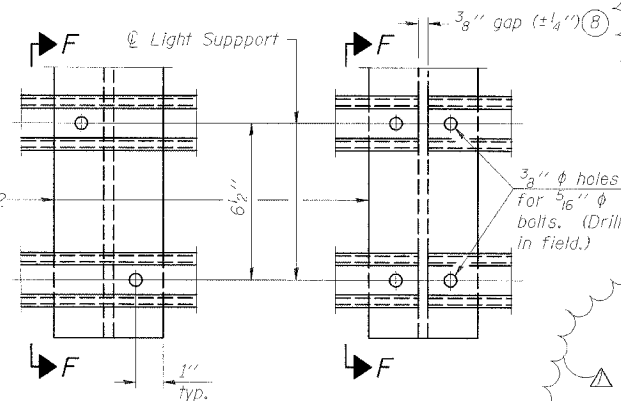
SECTION F-F

LIGHTING FIXTURE MOUNTS

NOTES



WELDED BAR GRATING DETAILS



DETAIL F

DETAIL G

BRIDGE MOUNT SIGN STRUCTURES
WALKWAY DETAILS

ILLINOIS DEPARTMENT OF TRANSPORTATION
F.A.I. 94/90 (DAN RYAN EXPRESSWAY)
31ST STREET TO 71ST STREET
NB EXPRESS LANE RECONSTRUCTION
OVERHEAD SIGN STRUCTURES
(BRIDGE MOUNTED)

NUMBER	REVISION	DATE
1	ADDENDUM 1	8/21/05

DESIGNED	RLK	20
CHECKED	EL	EXAMINED
DRAWN	ABW	PASSED
CHECKED	PJM	ENGINEER OF BRIDGES AND STRUCTURES

- Drilling holes in grating may be done in shop or field, based on Contractor's preference and subject to accurate alignment. Field drilled holes must be touched up with galvanized paint.
- Horizontal rail member shall be continuous thru 1 1/2" pipe. Provide 7/16" hole in fitting for 3/8" bolt. Field drill 7/16" hole in horizontal rail member. Provide washer and locknut for bolt. (Use 5/16" eyebolts in 1/2" holes on top rail at ends only.)
- Install standard force-fit end caps or weld 1/8" end plates with 1/8" c.f.w. and grind smooth. (All rail ends.)
- 3/8" (±1/4") gap between grating panels at splice.
- Chain to be hot dip galvanized after manufacture or stainless steel suitable for prolonged exterior exposure. Approximately 3'-6" long chain per location. Maximum sag with handrail erected = 4".
- 1/8" x 1/2" x 2" welded to handrail posts to protect locations that contact grating.
- Extrusions may be used in lieu of details shown, with approval by Engineer.
- Field cut ends of light support channels shall be free of burrs or hazardous projections and coated with zinc-rich primer or equivalent.

BM-4 Special 1/7/05

SGN-24