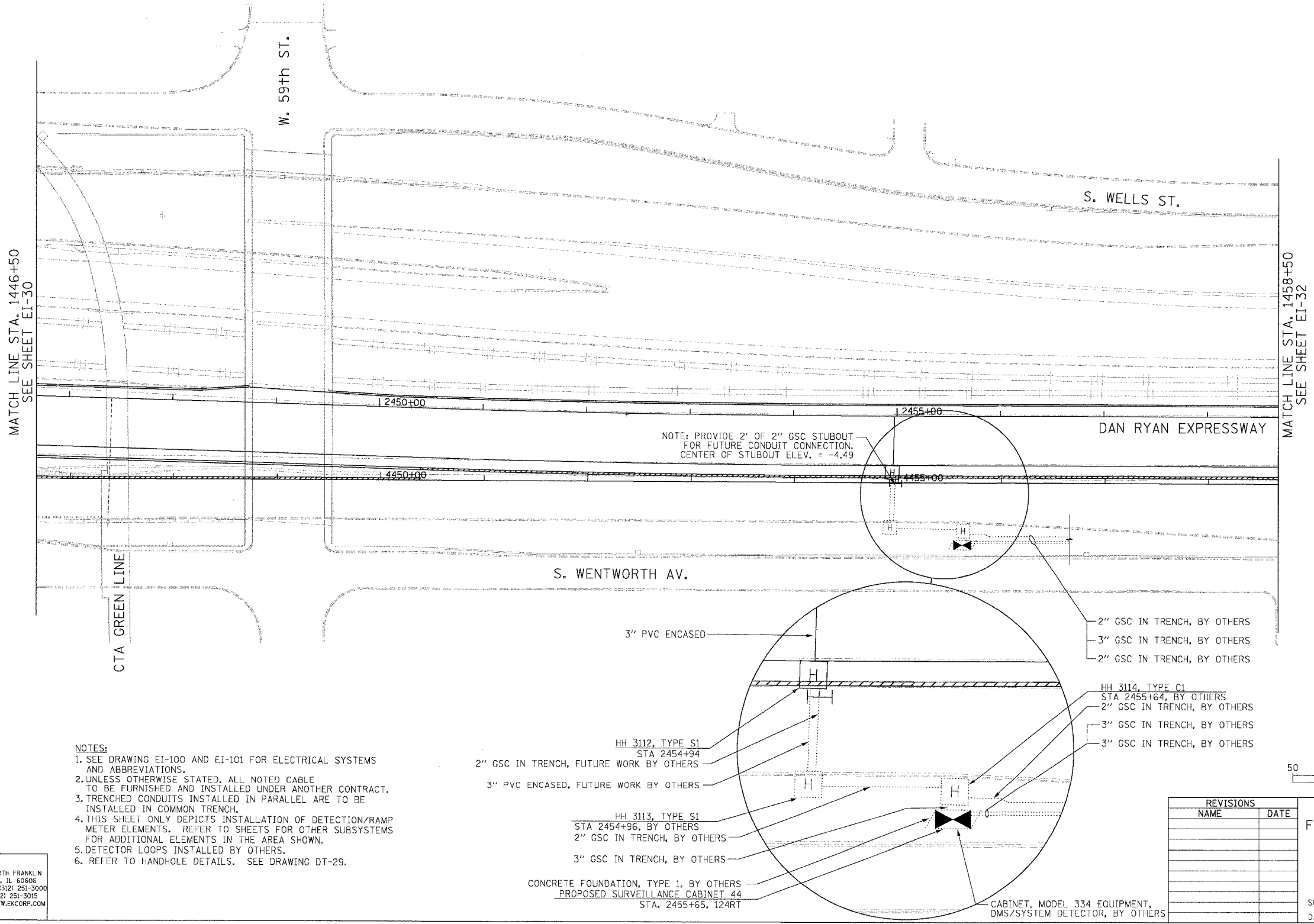


|                     |                           |        |              |           |
|---------------------|---------------------------|--------|--------------|-----------|
| F.A.I. RTE.         | SECTION                   | COUNTY | TOTAL SHEETS | SHEET NO. |
| 94/90               |                           | COOK   | 556          | 329       |
| STA. 1446+50        | TO STA. 1458+50           |        |              |           |
| FED. ROAD DIST. NO. | ILLINOIS FED. AID PROJECT |        |              |           |
| 62300               | 11818, ETC. 2324.6-1P1R-8 |        |              |           |



- NOTES:**
1. SEE DRAWING EI-100 AND EI-101 FOR ELECTRICAL SYSTEMS AND ABBREVIATIONS.
  2. UNLESS OTHERWISE STATED, ALL NOTED CABLE TO BE FURNISHED AND INSTALLED UNDER ANOTHER CONTRACT.
  3. TRENCHED CONDUITS INSTALLED IN PARALLEL ARE TO BE INSTALLED IN COMMON TRENCH.
  4. THIS SHEET ONLY DEPICTS INSTALLATION OF DETECTION/RAMP METER ELEMENTS. REFER TO SHEETS FOR OTHER SUBSYSTEMS FOR ADDITIONAL ELEMENTS IN THE AREA SHOWN.
  5. DETECTOR LOOPS INSTALLED BY OTHERS.
  6. REFER TO HANDHOLE DETAILS. SEE DRAWING DT-29.

NOTE: PROVIDE 2' OF 2" GSC STUBOUT FOR FUTURE CONDUIT CONNECTION. CENTER OF STUBOUT ELEV. = -4.49

HH 3112, TYPE S1  
STA 2454+94  
2" GSC IN TRENCH, FUTURE WORK BY OTHERS  
3" PVC ENCASED, FUTURE WORK BY OTHERS

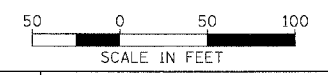
HH 3113, TYPE S1  
STA 2454+96, BY OTHERS  
2" GSC IN TRENCH, BY OTHERS  
3" GSC IN TRENCH, BY OTHERS

CONCRETE FOUNDATION, TYPE 1, BY OTHERS  
PROPOSED SURVEILLANCE CABINET 44  
STA. 2455+65, 124RT

2" GSC IN TRENCH, BY OTHERS  
3" GSC IN TRENCH, BY OTHERS  
2" GSC IN TRENCH, BY OTHERS

HH 3114, TYPE C1  
STA 2455+64, BY OTHERS  
2" GSC IN TRENCH, BY OTHERS  
3" GSC IN TRENCH, BY OTHERS  
3" GSC IN TRENCH, BY OTHERS

CABINET, MODEL 334 EQUIPMENT, DMS/SYSTEM DETECTOR, BY OTHERS



EI-31

| REVISIONS |      |
|-----------|------|
| NAME      | DATE |
|           |      |
|           |      |
|           |      |
|           |      |
|           |      |
|           |      |
|           |      |
|           |      |
|           |      |

ILLINOIS DEPARTMENT OF TRANSPORTATION  
F.A.I. 94/90 (DAN RYAN EXPRESSWAY)  
31ST STREET TO 71ST STREET  
NB EXPRESS LANE RECONSTRUCTION  
ELECTRICAL INFRASTRUCTURE PLAN  
NORTHBOUND STA 1446+50 TO 1458+50

SCALE: 1"=50'  
DATE: 7/7/05

DRAWN BY: CJH  
CHECKED BY: MJL

**Edwards AND Kelcey**  
ONE NORTH FRANKLIN  
CHICAGO, IL 60606  
PHONE: (312) 251-3000  
FAX: (312) 251-3015  
WEB: WWW.EKCORP.COM

06/27/2005 09:32:29 PM