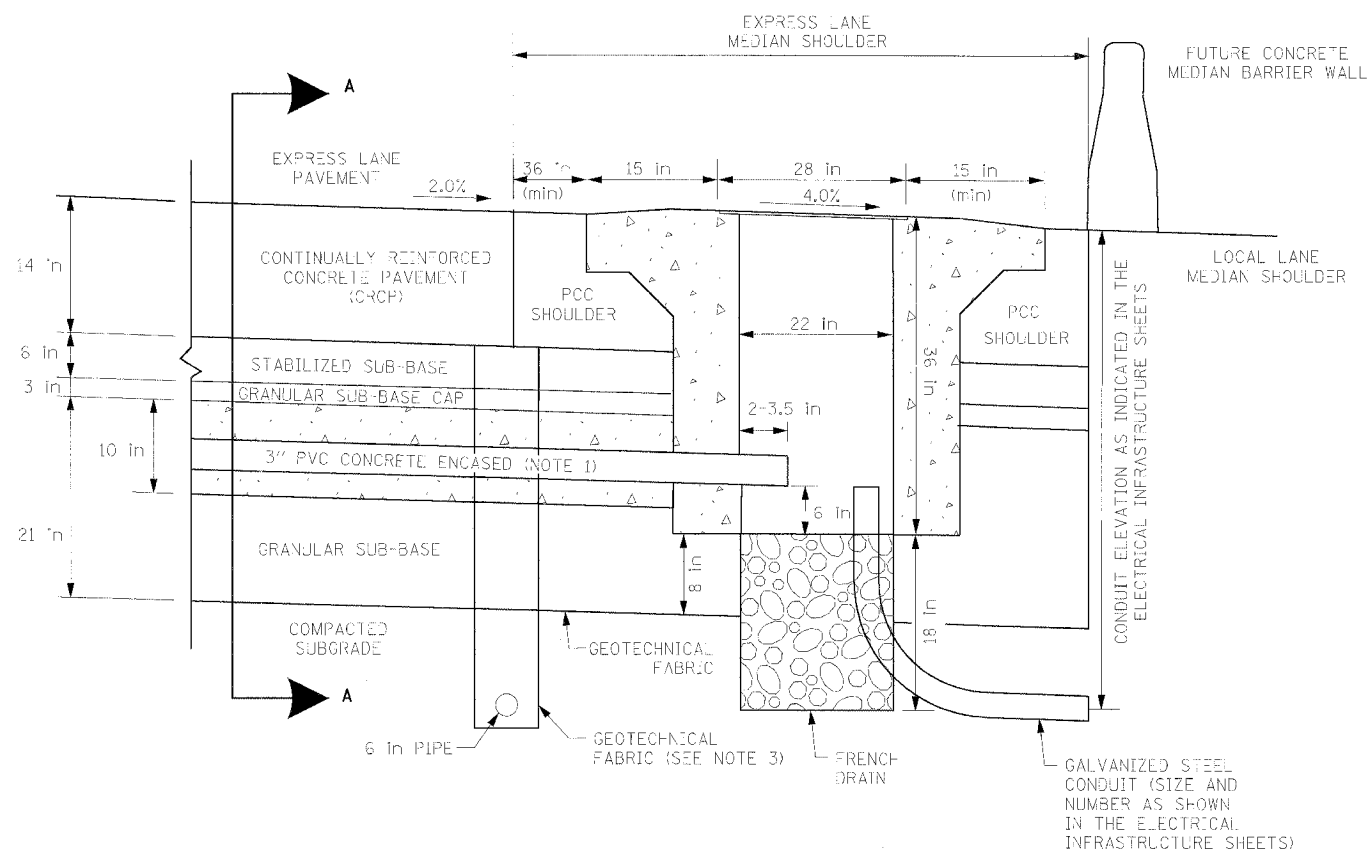
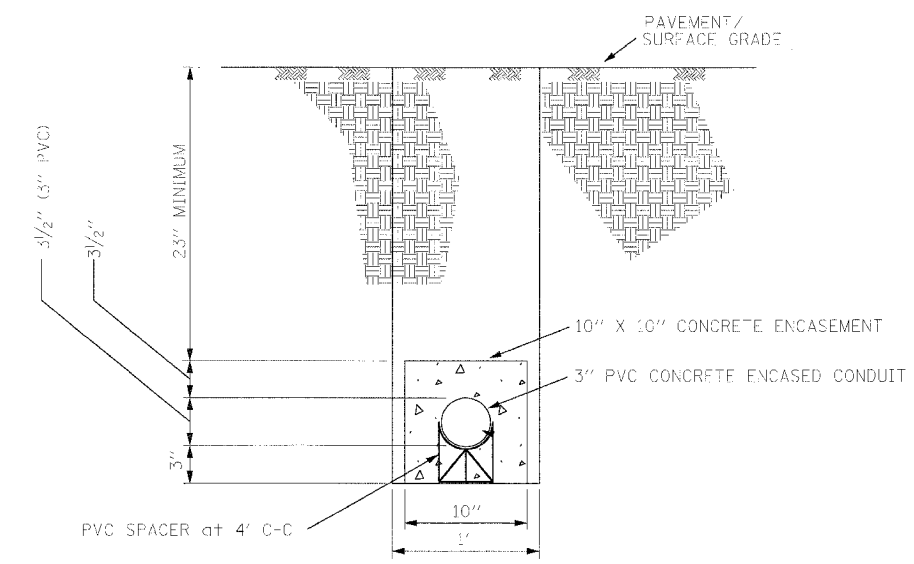


F.A.I. R/F.E.	SECTION	COUNTY	TOTAL SHEETS	SHEET NO.
94/90		COOK	556	345
STA.	TO STA.			
FED. ROAD DIST. NO.	ILLINOIS	FED. AID PROJECT		
62300	11818, ETC, 2324.6-1PR-8			



HEAVY DUTY HANDHOLE IN MAINLINE SHOULDER (TYPICAL)



SECTION A-A
TYPICAL 3" PVC CONCRETE ENCASED CONDUIT UNDER PAVEMENT DETAIL
(FOR MICROLOOP INSTALLATION IN PROPOSED MAINLINE PAVEMENT)

- NOTES
1. 3" PVC CONCRETE ENCASED CONDUIT IS REQUIRED ONLY WHERE SHOWN ON THE PLAN DRAWINGS. WHEN INSTALLED, THE CONDUIT MUST MAINTAIN THE SAME ANGLE AS THE PAVEMENT THROUGHOUT ITS ENTIRE LENGTH.
 2. FOR HANDHOLE DETAIL SEE SHEET DT-46.
 3. WHEN INSTALLING CONDUIT NEAR OR THROUGH UNDERDRAIN GEOTECHNICAL FABRIC, THE CONTRACTOR SHALL MAINTAIN THE INTEGRITY AND UNIFORMITY OF THE UNDERDRAIN FABRIC THROUGH OVERLAP TO THE SATISFACTION OF THE ENGINEER.

DT-29

Edwards AND Kelcey
ONE NORTH FRANKLIN
CHICAGO, IL 60606
PHONE: (312) 251-3000
FAX: (312) 251-3015
WEB: WWW.EKCORP.COM

REVISIONS		ILLINOIS DEPARTMENT OF TRANSPORTATION F.A.I. 94/90 (DAN RYAN EXPRESSWAY) 31ST STREET TO 71ST STREET NB EXPRESS LANE RECONSTRUCTION TYPICAL HANDHOLE INSTALLATION DETAIL - MAINLINE SHOULDER
NAME	DATE	
		SCALE: NTS DATE: 7/7/05 DRAWN BY: NB CHECKED BY: CTC

06/24/2005 04:10 PM