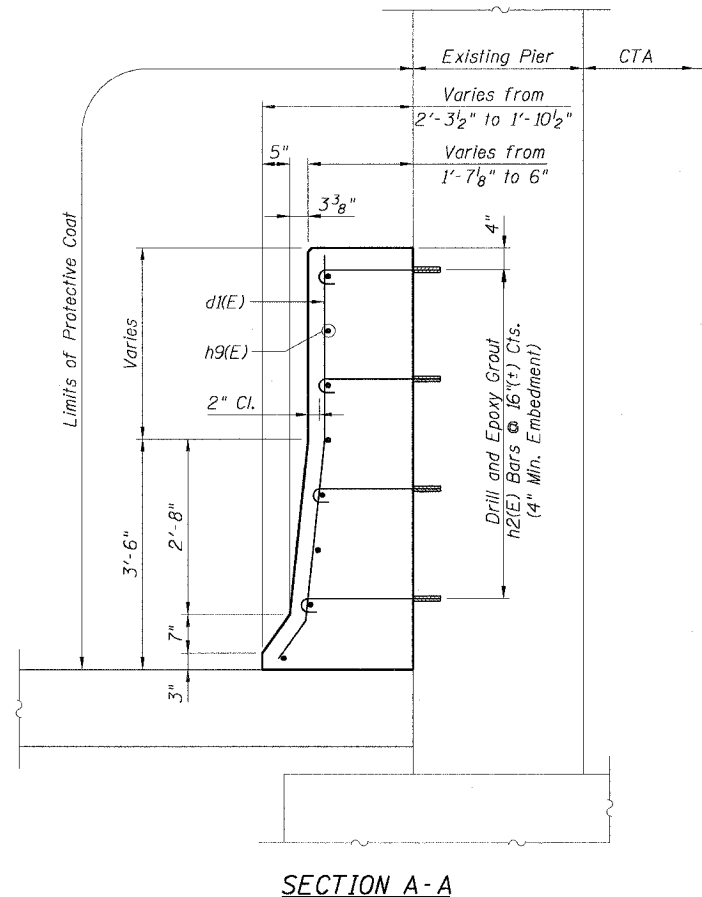
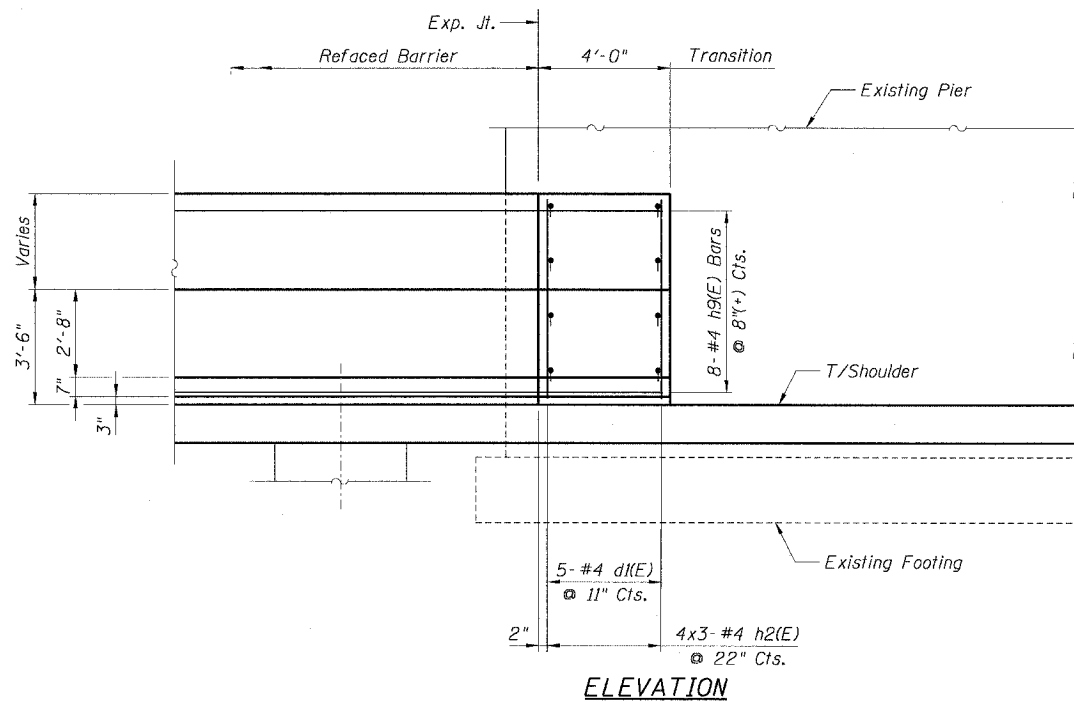
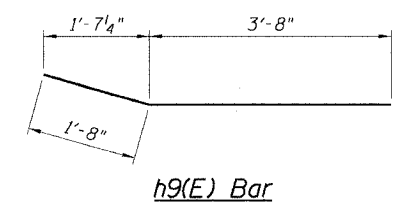
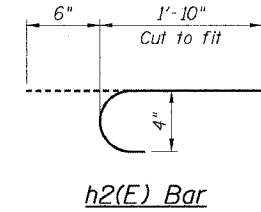
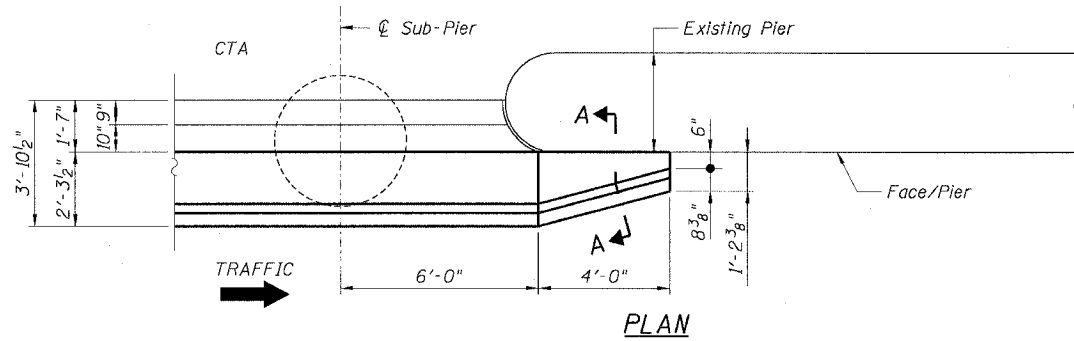


STATE OF ILLINOIS
DEPARTMENT OF TRANSPORTATION

F.A.I. RTE.	SECTION	COUNTY	TOTAL SHEETS	SHEET NO.
90/94		COOK	556	377
STA.	TO STA.			
FED. ROAD DIST. NO. 1	ILLINOIS	FED. AID PROJECT		
(181B, ETC. 2324.6-1P)R-8				62300

**BILL OF MATERIAL
FOR ONE TRANSITION**

Bar	No.	Size	Length	Shape
d(E)	5	#4	6'-5"	—
h2(E)	12	#4	2'-4"	⌋
h9(E)	8	#4	5'-4"	—
Item	Unit	Quantity		
Reinforcement Bars, Epoxy Coated	Pound	56		
Concrete Superstructure	Cu. Yd.	1.4		
Protective Coat	Sq. Yd.	4		



LEGEND:

Concrete Removal

NOTES:

1. Drilling and grouting of #4 h2(E) bars shall be in accordance with Section 584 of the Standard Specifications.
2. The cost of drilling holes, furnishing and placing Epoxy Grout and setting #4 h2(E) bars shall be included in the cost per cubic yard for Concrete Superstructure.
3. For d(E) bar details, see Sheet B2.
4. For Refaced Barrier Wall Details, see Sheets B2 and B3.
5. For locations of Transition, see Roadway Plans.

CTE | AECOM

REVISIONS	
NAME	DATE
MJP	8-12-05

ILLINOIS DEPARTMENT OF TRANSPORTATION
F.A.I. 90/94 (DAN RYAN EXPRESSWAY)
71ST STREET TO 31ST STREET (NB EXPRESS LANES)
EXISTING BARRIER WALL MODIFICATIONS
AT CTA STATIONS
PROPOSED T/S SHOULDER BELOW EXISTING
REFACED BARRIER TO PIER
TRANSITION DETAILS (NO TAPER)
SCALE: None DRAWN BY: CHD
DATE: July 7, 2005 CHECKED BY: MJP