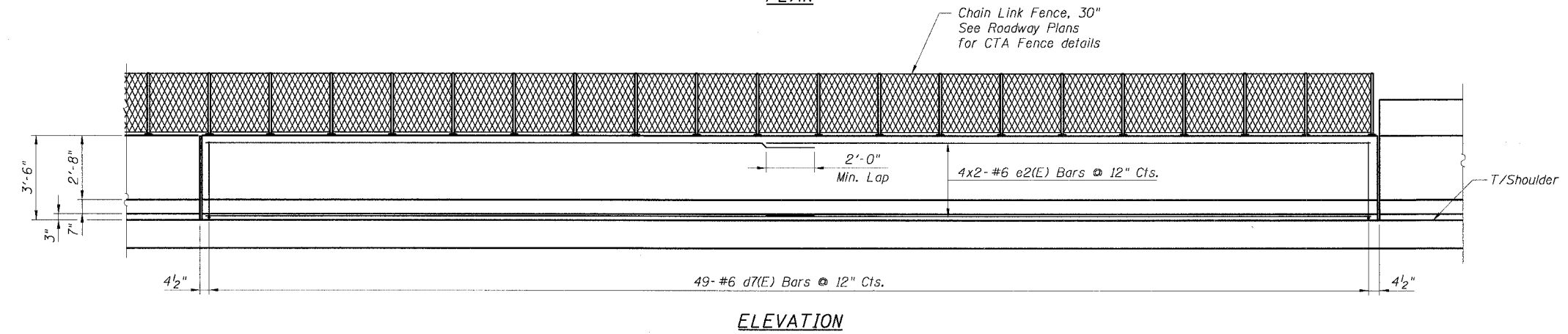
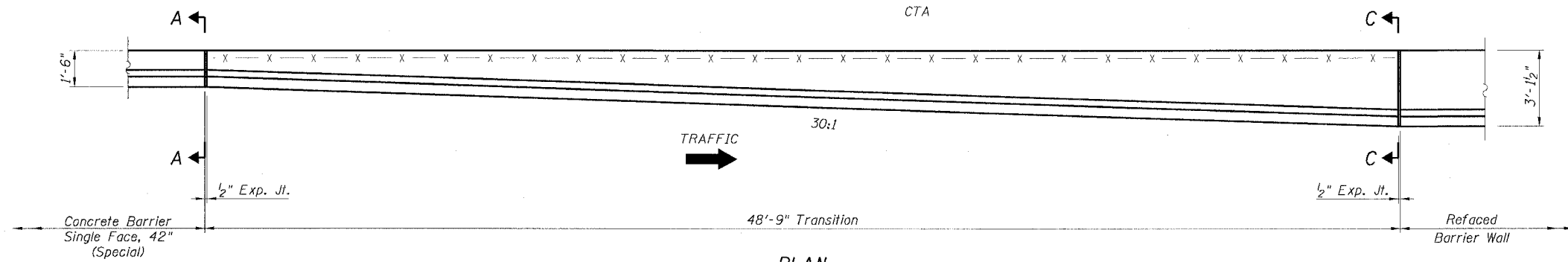


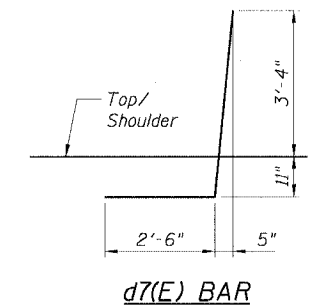
STATE OF ILLINOIS
DEPARTMENT OF TRANSPORTATION

F.A.I. RTE.	SECTION	COUNTY	TOTAL SHEETS	SHEET NO.
90/94		COOK	556	382
STA.	TO STA.			
FED. ROAD DIST. NO. 1	ILLINOIS	FED. AID PROJECT		
• (1818, ETC, 2324.6-1PJR-8			62300	



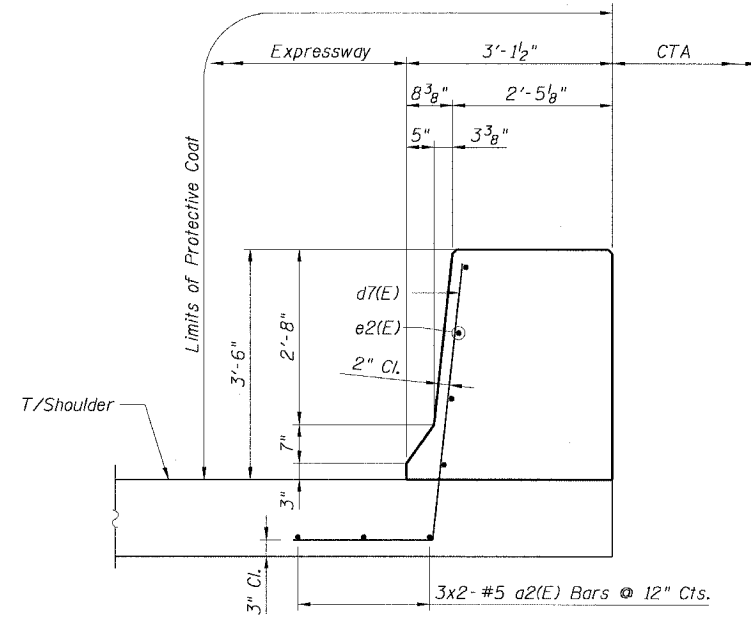
BILL OF MATERIAL
FOR ONE TRANSITION

Bar	No.	Size	Length	Shape
a2(E)	6	#5	25'-3"	—
d7(E)	49	#6	6'-9"	—
e2(E)	8	#6	25'-3"	—
Item	Unit	Quantity		
Reinforcement Bars, Epoxy Coated	Pound	958		
Concrete Superstructure	Cu. Yd.	11.7		
Protective Coat	Sq. Yd.	28.5		



NOTES:

1. Provide Construction Joint in the transition.
2. For Expansion Joint Details, see Sheet B6.
3. For Section A-A, see Sheet B15.
4. For alternative vertical reinforcing details, see "Concrete Barrier Single Face, 42" Alternatives".
5. For Refaced Barrier Wall Details, see Sheets B2 and B3.
6. For Soldier Pile and Logging Retention System, see Sheets B1 thru B3.
7. For Concrete Barrier Single Face, 42" (Special) Details, see Roadway details.
8. For locations of Transition, see Roadway Plans.



CTE | AECOM

REVISIONS	
NAME	DATE
MJP	8-12-05

ILLINOIS DEPARTMENT OF TRANSPORTATION
F.A.I. 90/94 (DAN RYAN EXPRESSWAY)
71ST STREET TO 31ST STREET (NB EXPRESS LANES)
EXISTING BARRIER WALL MODIFICATIONS
AT CTA STATIONS
PROPOSED T/S SHOULDER BELOW EXISTING
REFACED BARRIER TO NEW 42" BARRIER
TRANSITION DETAILS

SCALE: None DRAWN BY: CHD
DATE: July 7, 2005 CHECKED BY: RDP