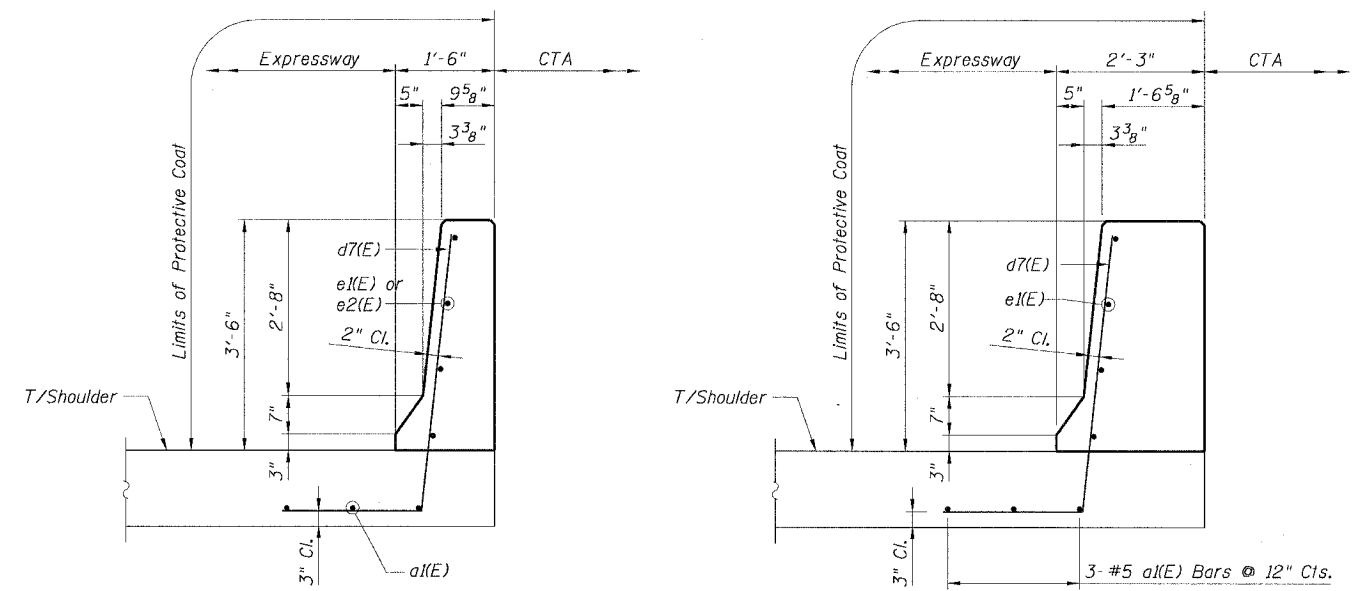
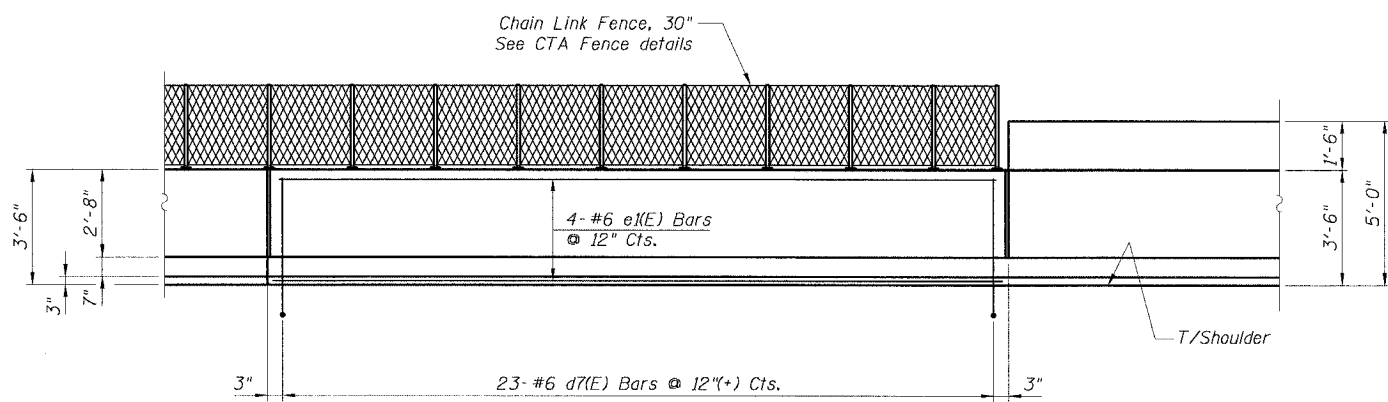
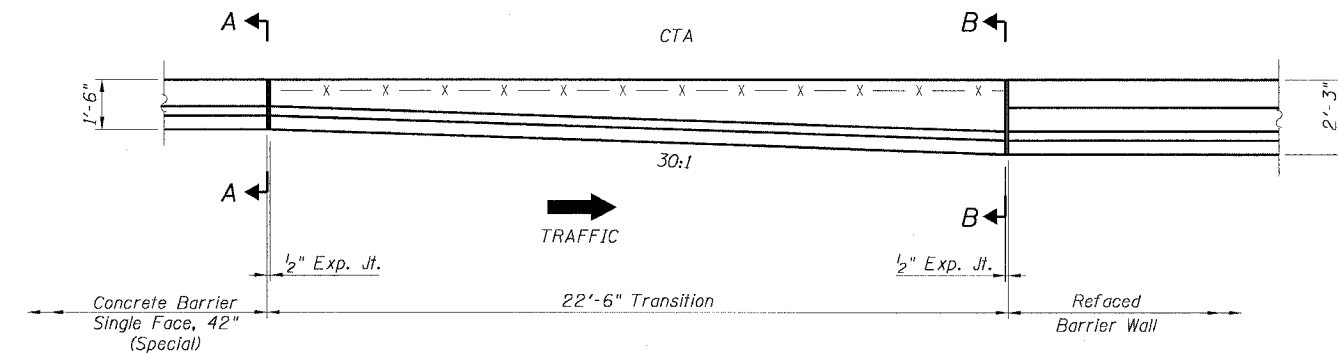


STATE OF ILLINOIS
DEPARTMENT OF TRANSPORTATION

F.A.I. RT.:	SECTION	COUNTY	TOTAL SHEETS	SHEET NO.
90/94	*	COOK	556	383
STA.	TO STA.			
FED. ROAD DIST. NO. 1	ILLINOIS	FED. AID PROJECT		
* (1B1B, ETC. 2324.6-1P1R-B			62300	

**BILL OF MATERIAL
FOR ONE TRANSITION**

Bar	No.	Size	Length	Shape
a(E)	3	#5	22'-2"	
d7(E)	23	#6	6'-9"	
e1(E)	4	#6	22'-2"	
Item	Unit	Quantity		
Reinforcement Bars, Epoxy Coated	Pound	436		
Concrete Superstructure	Cu. Yd.	4.2		
Protective Coat	Sq. Yd.	12		



NOTES:

1. For Expansion Joint Details, see Sheet B6.
2. For alternative vertical reinforcing details, see "Concrete Barrier Single Face, 42" Alternatives".
3. For d7(E) bar details, see Sheet B14.
4. For Refaced Barrier Wall details, see Sheets B4 and B5.
5. For Soldier Pile and Lagging Retention System, see Sheets B1, B4 and B5.
6. For Concrete Barrier Single Face, 42" (Special), see Roadway details.
7. For locations of Transition, see Roadway Plans.

CTE | AECOM

REVISIONS	
NAME	DATE
MJP	8-12-05

ILLINOIS DEPARTMENT OF TRANSPORTATION
F.A.I. 90/94 (DAN RYAN EXPRESSWAY)
71ST STREET TO 31ST STREET (NB EXPRESS LANES)
EXISTING BARRIER WALL MODIFICATIONS
AT CTA STATIONS
PROPOSED T/S SHOULDER AT OR ABOVE EXISTING
REFACED BARRIER TO NEW 42" BARRIER
TRANSITION DETAILS
SCALE: None DRAWN BY: CHD
DATE: July 7, 2005 CHECKED BY: RDP