

BILL OF MATERIAL JUNCTION CHAMBER 7-01

Bar	No.	Size	Length	Shape
a10	25	#6	10'-2"	—
a11	25	#10	11'-6"	—
a12	4	#8	10'-2"	—
a13	2	#5	3'-3"	—
a14	6	#5	5'-4"	—
a15	11	#5	8'-2"	—
a16	17	#10	12'-4"	—
a17	4	#8	12'-0"	—
h10	56	#8	10'-2"	—
h11	84	#8	9'-2"	L
h12	54	#8	6'-0"	—
h13	4	#8	6'-3"	—
h14	24	#8	11'-11"	—
h15	25	#6	11'-11"	—
h16	34	#6	13'-3"	—
h17	18	#5	7'-7"	—
h18	4	#8	13'-9"	—
h19	18	#8	10'-2"	—
s10	2	#5	12'-8"	○
s11	40	#5	4'-9"	—
s12	4	#6	16'-2"	—
s13	2	#5	18'-8"	○
v10	68	#6	8'-2"	—
v11	50	#6	5'-10"	—
v12	62	#7	9'-7"	L
v13	62	#7	6'-9"	L
v14	8	#6	9'-6"	—
v15	8	#5	7'-0"	—
v16	10	#6	4'-10"	—
Reinforcement Bars			Pound	14,020
Concrete Structures			Cu. Yard	25

NOTES:

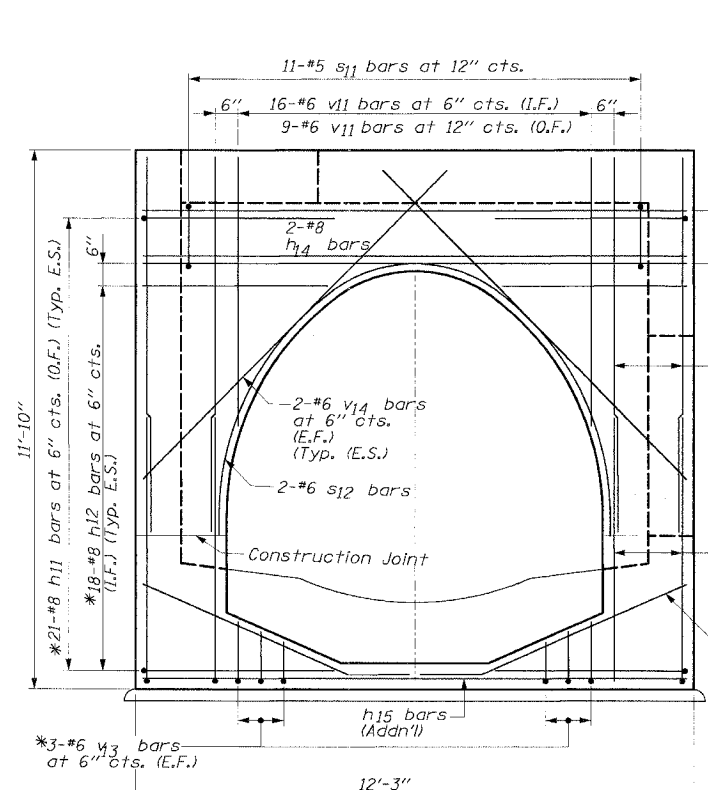
- All dimensions and elevations shall be field verified prior to construction.
- Concrete pipe sizes shall be coordinated with openings provided into junction chamber before pouring concrete.
- Manhole Frame, Ladder Rungs, and any inserts installation shall be coordinated with Roadway Plans.
- Concrete cover for reinforcement steel to be 2" unless otherwise noted.
- All concrete edges shall be chamfered 1 inch.
- All lap splces marked on the drawings are minimum.
- Concrete Compressive Strength $f_c' = 3,500$ psi.
- Steel Yield Strength = 60,000 psi.
- Work this Sheet with other Junction Chamber Sheets.
- Quantities Included for information only. All quantities associated with the junction chamber are included with the pay item Junction Chamber No. 2 except for Braced Excavation and Trench Backfill which shall be paid for separately.

- * Cut bars to fit in field.
- E.F. - Denotes Each Face
- E.S. - Denotes Each Side
- I.F. - Denotes Inside Face
- O.F. - Denotes Outside Face

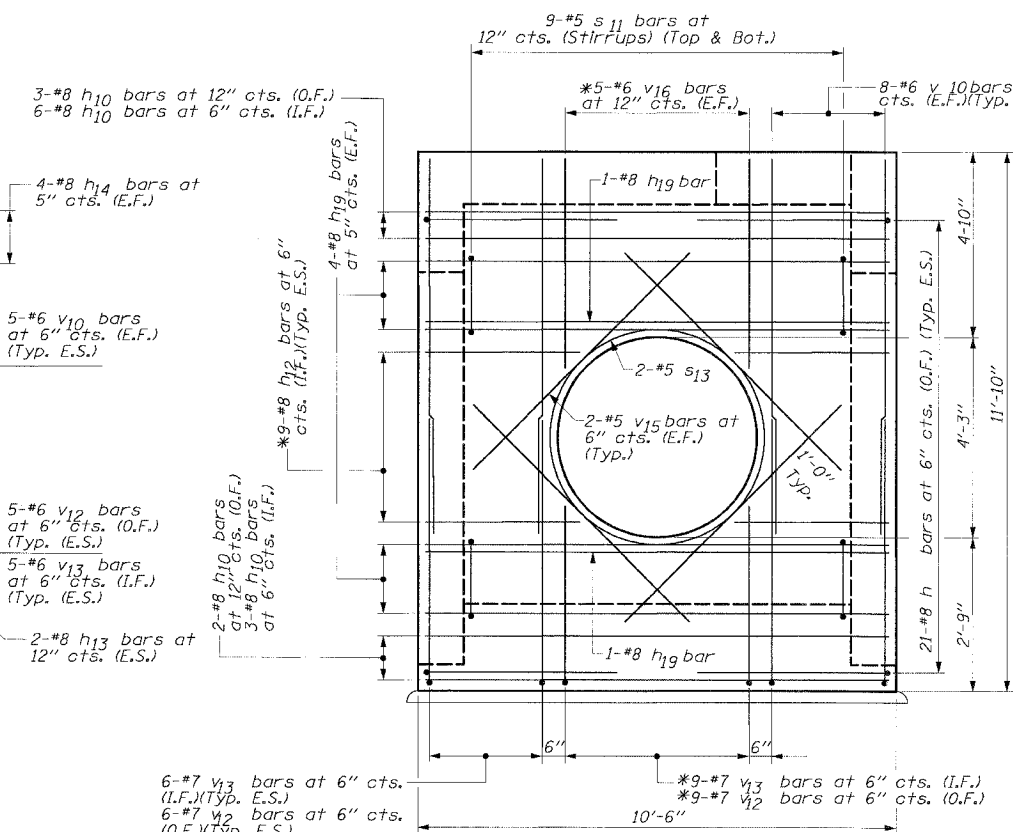
REVISIONS	
NAME	DATE

ILLINOIS DEPARTMENT OF TRANSPORTATION
F.A.I. 94/90 (DAN RYAN EXPRESSWAY)
31ST STREET TO 71ST STREET
NB EXPRESS LANE RECONSTRUCTION
JUNCTION CHAMBER 7-01
DETAIL 2

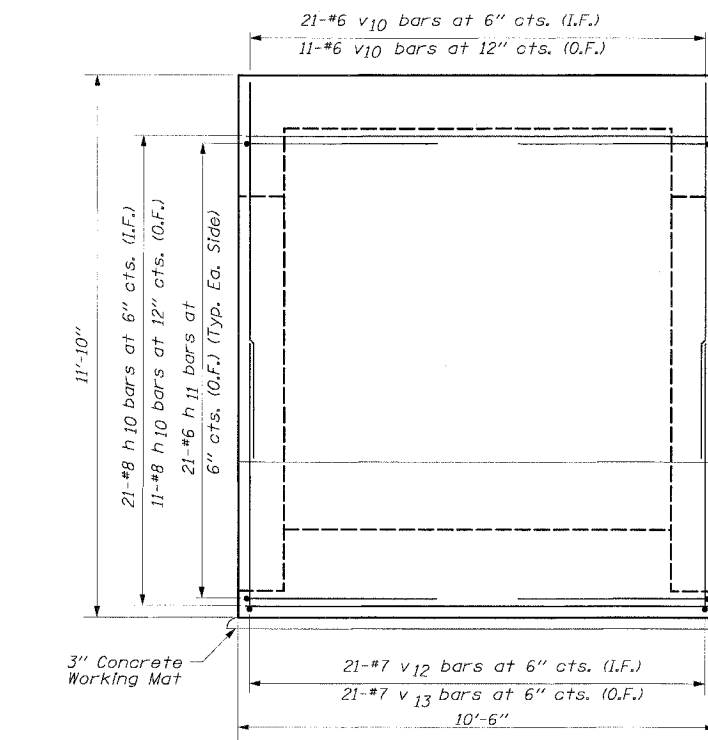
SCALE: DRAWN BY: JRW
DATE: 7/7/05 CHECKED BY: EL



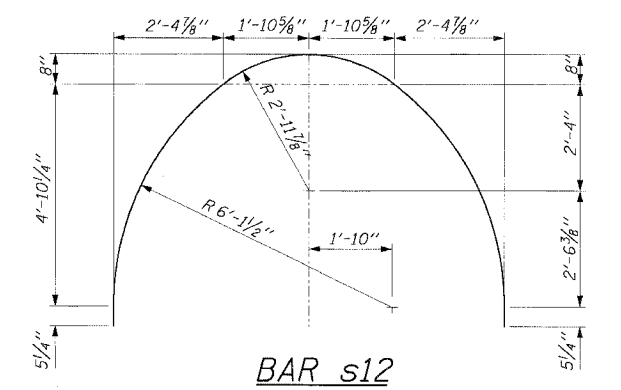
SECTION E-E
(Typical Both Faces)



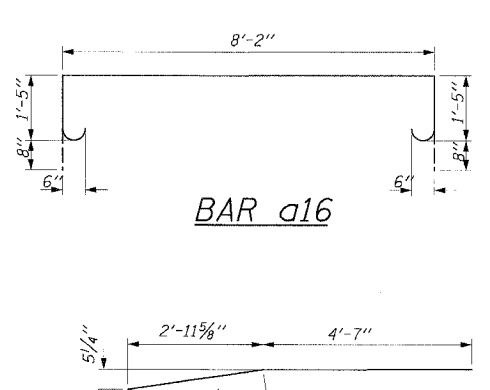
SECTION H-H



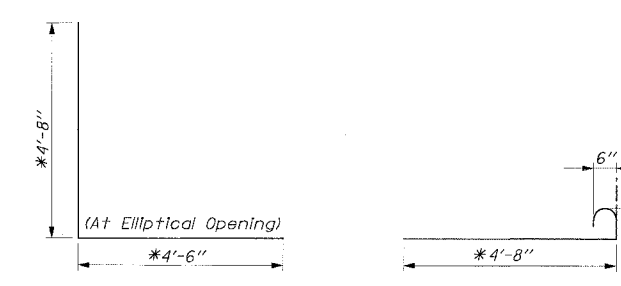
SECTION G-G



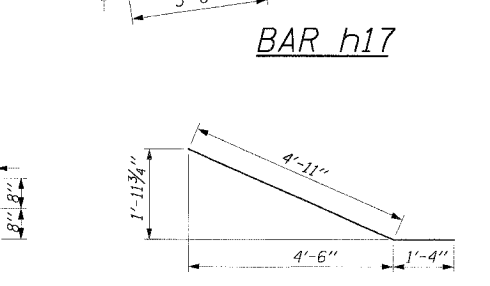
BAR s12



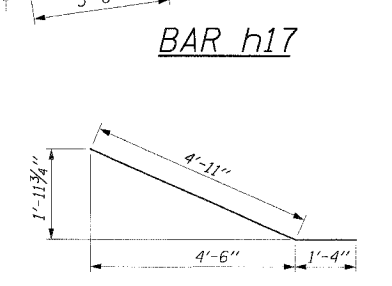
BAR a16



BAR h11



BAR h12



BAR h13

Edwards and Kelcey
ONE NORTH FRANKLIN
CHICAGO, IL 60606
PHONE: (312) 251-3000
FAX: (312) 251-3015
WEB: WWW.EKCORP.COM

P:\030019.035\Con 14&15\CADD\48cu.40372e.SHT