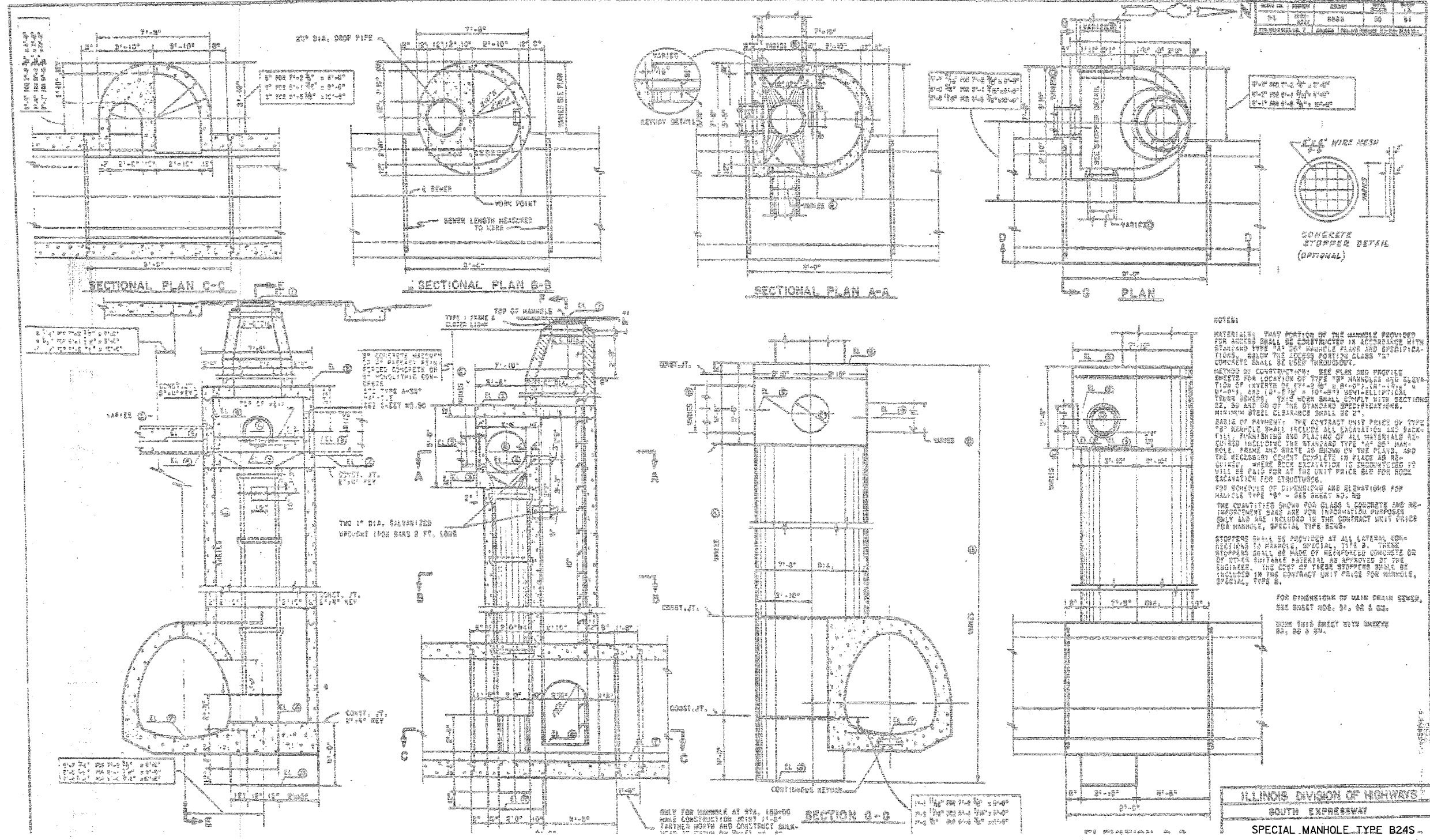


F.A.I.	SECTION	COUNTY	TOTAL SHEETS	SHEET NO.
94/90		COOK	556	416
STA.	TO STA.			
FED. ROAD DIST. NO.	ILLINOIS	FED. AID PROJECT		
62300	*1818, ETC, 2324.6-1PIR-8			



**NOTES**

MATERIALS: THAT PORTION OF THE MANHOLE PROVIDED FOR ACCESS SHALL BE CONSTRUCTED IN ACCORDANCE WITH STANDARD TYPE "A" MANHOLE PLANS AND SPECIFICATIONS. SHALL BE CONSTRUCTED WITH CLASS "A" CONCRETE. SHALL BE USED THROUGHOUT.

METHOD OF CONSTRUCTION: SEE PLAN AND PROFILE SHEETS FOR LOCATION OF TYPE "B" MANHOLES AND ELEVATION OF INVERTS OF 24" DIA. MAIN DRAIN SEWER. TYPE WORK SHALL COMPLY WITH SECTION 22, SO AND 23 OF THE STANDARD SPECIFICATIONS. MINIMUM STEEL CLEARANCE SHALL BE 2".

PAVEMENT: THE CONTRACT UNIT PRICE OF TYPE "B" MANHOLE SHALL INCLUDE ALL EXCAVATION AND BACKFILL, FINISHING AND PLACING OF ALL MATERIALS REQUIRED INCLUDING THE STANDARD TYPE "A" MANHOLE. SHALL BE PAID FOR AS SHOWN ON THE PLAN, AND THE NECESSARY CURB COMPLETE IN PLACE AS REQUIRED. WHERE ROCK EXCAVATION IS INDICATED IT WILL BE PAID FOR AT THE UNIT PRICE SET FOR ROCK EXCAVATION FOR STRUCTURES.

FOR SCHEDULE OF DIMENSIONS AND ELEVATIONS FOR MANHOLE TYPE "B" - SEE SHEET NO. 22.

THE QUANTITIES SHOWN FOR CLASS "A" CONCRETE AND REINFORCEMENT BARS ARE FOR INFORMATION PURPOSES ONLY AND ARE INCLUDED IN THE CONTRACT UNIT PRICE FOR MANHOLE, SPECIAL, TYPE "B".

STOPPERS SHALL BE PROVIDED AT ALL LATERAL CONNECTIONS TO MANHOLE, SPECIAL, TYPE "B". THESE STOPPERS SHALL BE MADE OF REINFORCED CONCRETE OR OF OTHER SUITABLE MATERIAL AS APPROVED BY THE ENGINEER. THE COST OF THESE STOPPERS SHALL BE INCLUDED IN THE CONTRACT UNIT PRICE FOR MANHOLE, SPECIAL, TYPE "B".

FOR DIMENSIONS OF MAIN DRAIN SEWER, SEE SHEET NOS. 21, 22 & 23.

MANHOLE SHALL BE SET WITH SHEETS 22, 23 & 24.

ILLINOIS DIVISION OF HIGHWAYS  
SOUTH EXPRESSWAY  
SPECIAL MANHOLE TYPE B24S

SHEET JC-10 OF JC-22

ILLINOIS DEPARTMENT OF TRANSPORTATION  
F.A.I. 94/90 (DAN RYAN EXPRESSWAY)  
31ST STREET TO 71ST STREET  
NB EXPRESS LANE RECONSTRUCTION  
JUNCTION CHAMBERS  
EXISTING DROP MANHOLE PLANS

SCALE: NTS  
DATE: 07/07/05  
DRAWN BY: BDC  
CHECKED BY: BLU

FOR INFORMATION ONLY

BOWMAN, BARRETT & ASSOCIATES INC  
CONSULTING ENGINEERS  
Chicago, Illinois  
312.228.0100  
www.bbainc.com

6/27/2005 4:50:36 PM