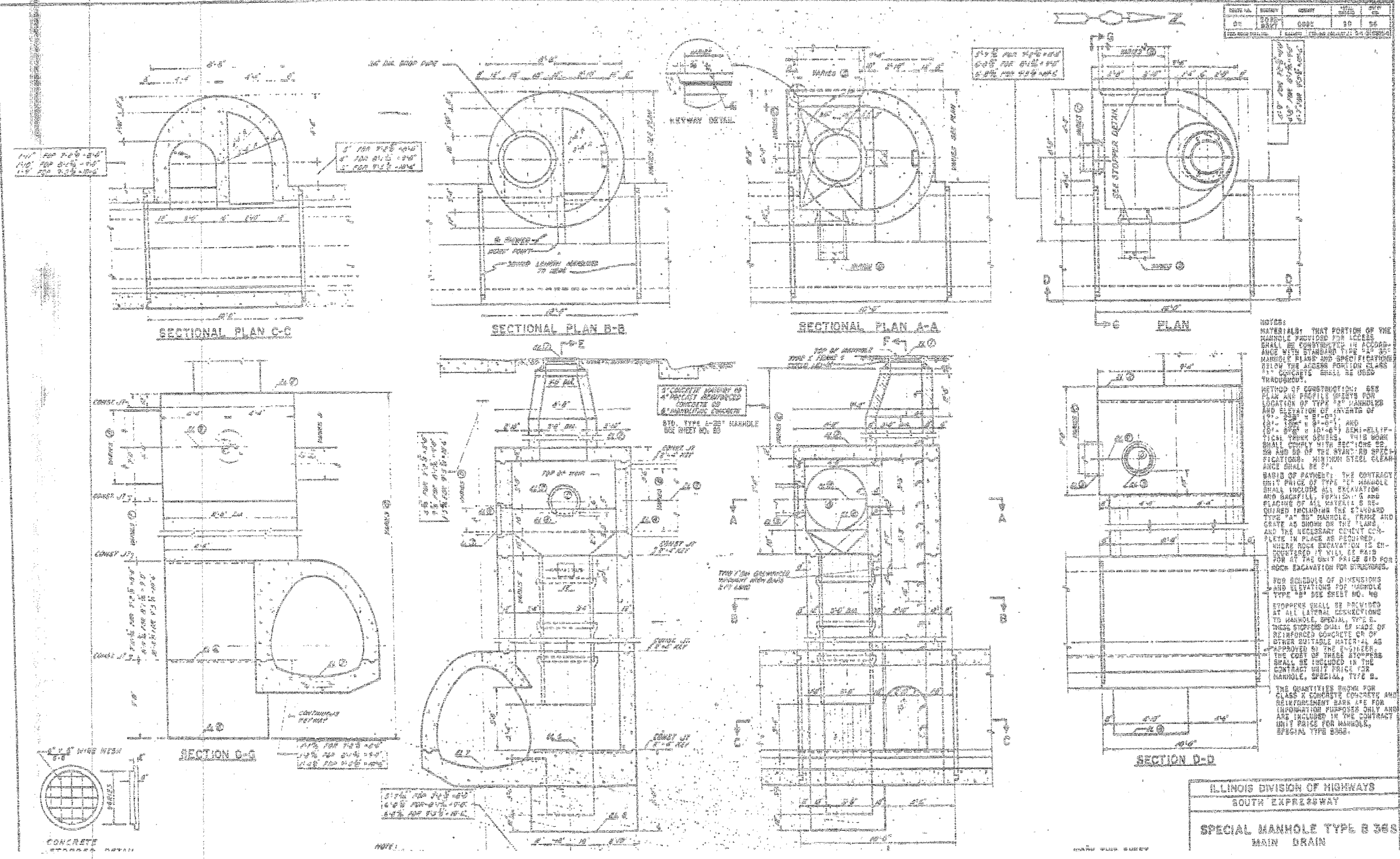


F.A.I.	SECTION	COUNTY	TOTAL SHEETS	SHEET NO.
94/90	*	COOK	556	421
STA.	TO STA.			
FED. ROAD DIST. NO.	ILLINOIS	FED. AID PROJECT		
62300		(1B1B, ETC. 2324.6-1P1R-8		



BOWMAN, BARRETT & ASSOCIATES INC.
CONSULTING ENGINEERS
Chicago, Illinois
312.228.0100
www.bbainc.com

FOR INFORMATION ONLY

REVISIONS	
NAME	DATE

SHEET JC-15 OF JC-22

ILLINOIS DEPARTMENT OF TRANSPORTATION
F.A.I. 94/90 (DAN RYAN EXPRESSWAY)
31ST STREET TO 71ST STREET
NB EXPRESS LANE RECONSTRUCTION
JUNCTION CHAMBERS
EXISTING DROP MANHOLE PLANS

SCALE: NTS
DATE: 07/07/05

DRAWN BY: BDC
CHECKED BY: BLU

11/660/000/CAN/STRUCTURES/66014/JC15.DWG

9/24/2005