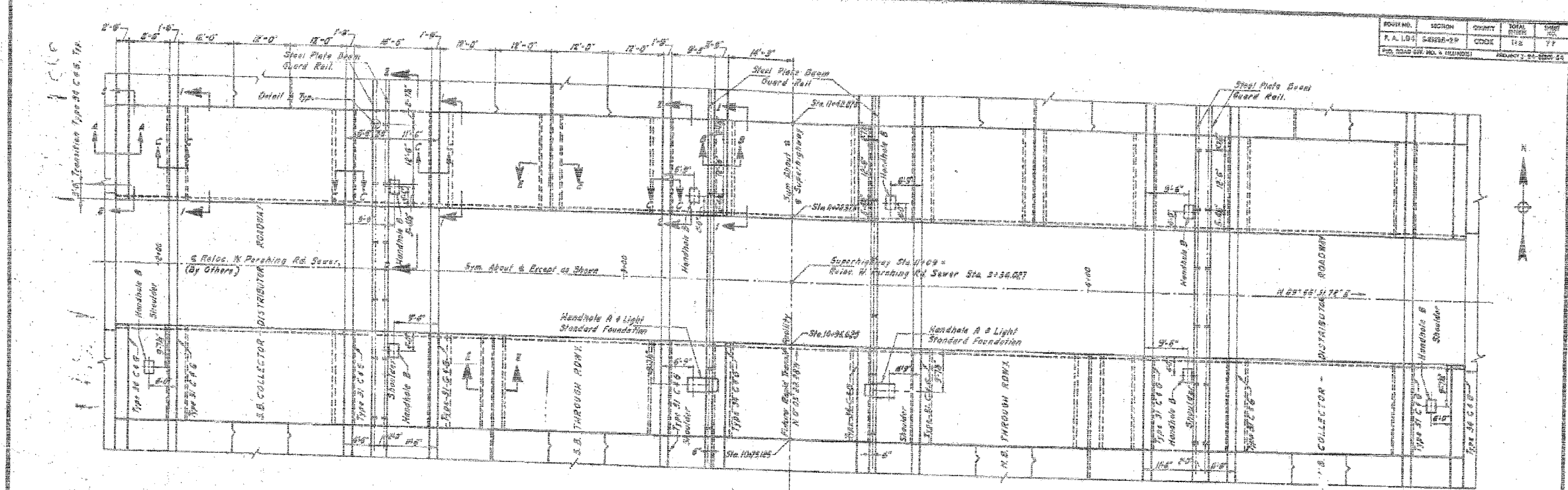
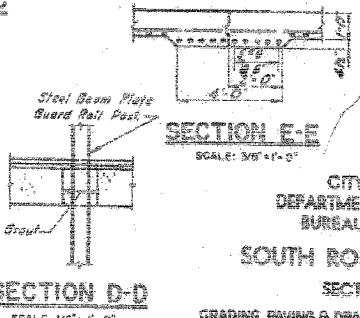
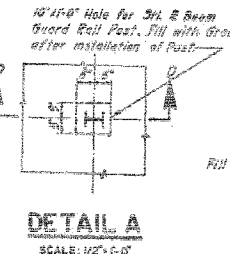
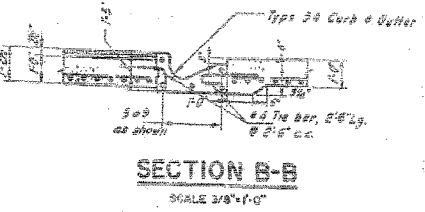
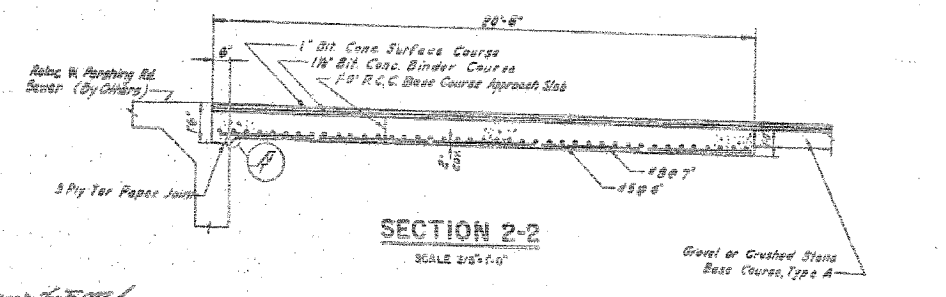
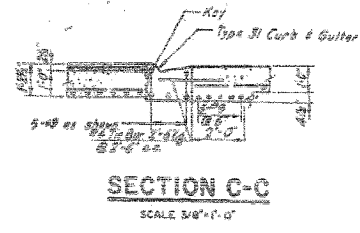
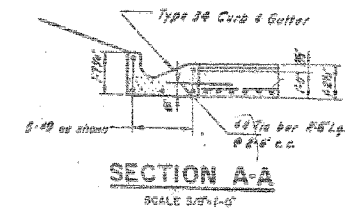
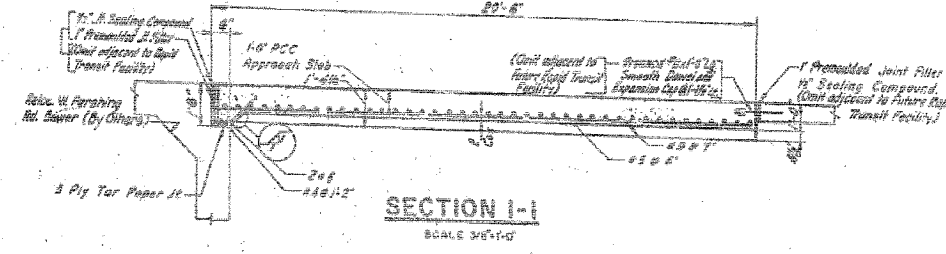


F.A.I.	SECTION	COUNTY	TOTAL SHEETS	SHEET NO.
94/90		COOK	556	446
STA.		TO STA.		
FED. ROAD DIST. NO.		ILLINOIS FED. AID PROJECT		
62300		*1818, ETC, 2324.6-1P1R-8		



APPROACH SLAB PLAN
SCALE 1"=10'



- NOTES**
1. Reinforcement bar cover = 2" except as noted.
 2. For Details of Type 21 & Type 24 Curb & Gutter, see Sheet 6-18.
 3. For Details of Construction Joint, see Sheet 6-11.
 4. For Details of Handhole A & B, and Light Standard Foundation, see Sheet 6-8.

CITY OF CHICAGO
DEPARTMENT OF PUBLIC WORKS
BUREAU OF ENGINEERING
SOUTH ROUTE SUPERHIGHWAY
SECTION 5 - 2323.6-2P
GRADING, PAVING & DRAINAGE, W. PERSHING RD. TO W. 36TH ST.
APPROACH SLAB
GOODRICH & ORSA, INC.
CONSULTING ENGINEERS, CHICAGO, ILL.
SCALE AS NOTED
SEPTEMBER 1964
SHEET NO. 6-77 OF 116 SHEETS

BOWMAN, BARRETT & ASSOCIATES INC.
CONSULTING ENGINEERS
Chicago, Illinois
312.228.0100
www.bbainc.com

FOR INFORMATION ONLY

REVISIONS	
NAME	DATE

SHEET CUL-14 OF CUL-14
ILLINOIS DEPARTMENT OF TRANSPORTATION
F.A.I. 94/90 (DAN RYAN EXPRESSWAY)
31ST STREET TO 71ST STREET
NB EXPRESS LANE RECONSTRUCTION
MWRD CULVERT, N. OF 39TH ST.,
COOK COUNTY, S.N. 016-2625
EXISTING APPROACH SLAB DETAILS
SCALE: NTS
DATE: 07/07/05
DRAWN BY: BDC
CHECKED BY: BLU

6/24/2005 9:35:44 AM