

FOR INDEX OF SHEETS SEE SHEET NO. 2
 DESIGN NUMBER: D-91-417-01 31st to 47th
 D-91-419-01 47th to 71st

STATE OF ILLINOIS
 DEPARTMENT OF TRANSPORTATION

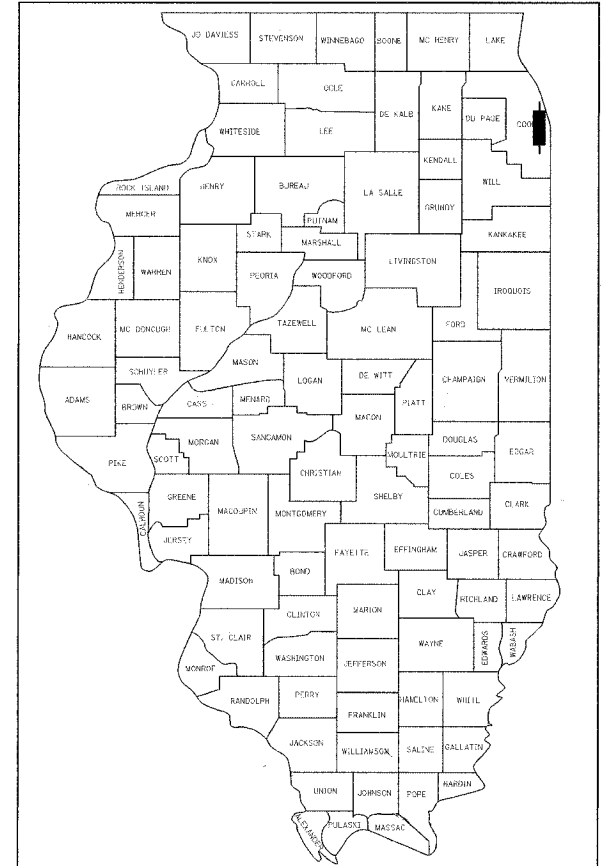
62302	F.A.I.	SECTION	COUNTY	TOTAL SHEETS	SHEET NO.
	94		COOK	598	1
				* (1818, ETC, 2324.6-1P)R-9	
				F4 = 602 total Sheets	

DIVISION OF HIGHWAYS
**PROPOSED
 HIGHWAY PLANS**

**F.A.I. ROUTE 94/90 (DAN RYAN EXPRESSWAY)
 (I-94/90) SB**

**31ST STREET TO 71ST STREET (SB EXPRESS LANES)
 ROADWAY RECONSTRUCTION**

**SECTION (1818, ETC, 2324.6-1P)R-9
 PROJECT: ACIM-094-3(398)055
 COOK COUNTY
 C-91-419-01**



LOCATION OF SECTION INDICATED THUS: - [rectangle] -

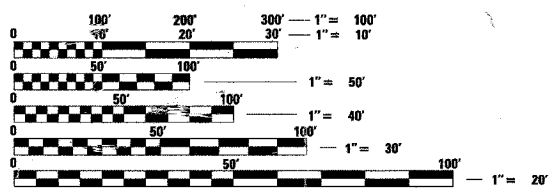
- SIGNED Richard W. Stafford
 DATE July 7, 2005
 EXPIRES November 30, 2005
 FOR ALL OTHER BOWMAN, BARRETT SHEETS
- SIGNED Brian L. Umbreit
 DATE July 7, 2005
 EXPIRES Nov. 30, 2006
 For Sheets 453-488, 492
- SIGNED Mir S. Alkhan
 DATE July 7, 2005
 EXPIRES November 30, 2005
 FOR ALL KAM ENGINEERING SHEETS
- SIGNED Philip J. Mingo
 DATE July 7, 2005
 EXPIRES November 30, 2005
 FOR ALL OTHER EDWARDS AND KELCEY SHEETS
- SIGNED Douglas C. Knuth
 DATE July 7, 05
 EXPIRES Nov 30, 06
 FOR SHEETS 435 - 448
- SIGNED John A. Lukowski
 DATE July 7, 2005
 EXPIRES November 30, 2005
 FOR ALL CTE SHEETS

PROJECT LOCATED IN THE CITY OF CHICAGO

DESIGN DESIGNATION
 DAN RYAN EXPRESSWAY 15,309 (35) ARTERIAL (PCC 30)

TRAFFIC VOLUMES AND SPEEDS

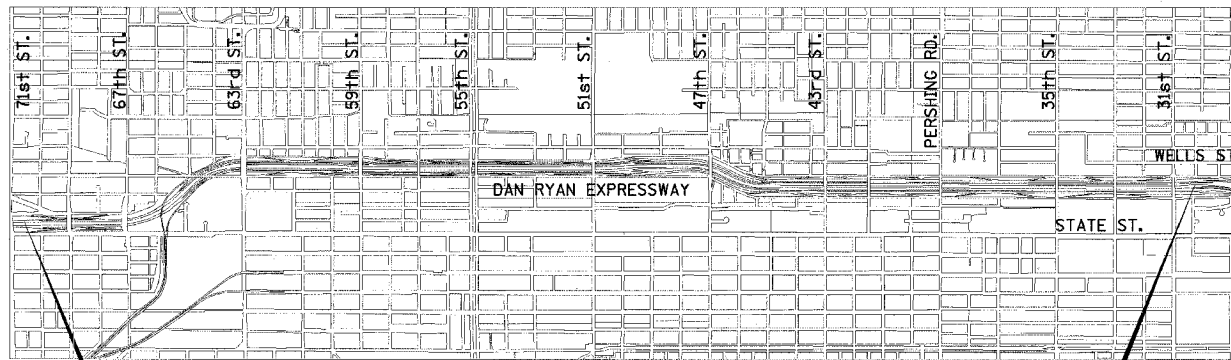
SB EXPRESS	ADT	DESIGN SPEED	POSTED SPEED
	100,155	60	50



FULL SIZE PLANS HAVE BEEN PREPARED USING STANDARD ENGINEERING SCALES. REDUCED SIZED PLANS WILL NOT CONFORM TO STANDARD SCALES. IN MAKING MEASUREMENTS ON REDUCED PLANS, THE ABOVE SCALES MAY BE USED.

FOR UTILITY LOCATION INFORMATION FOR EXCAVATION CALL CHICAGO UTILITY ALERT NETWORK (C.U.A.N.) 312-744-7000.

CONTRACT 62302



PROJECT BEGINS
 STA. 1367+00
 SB I-94 EXPRESS LANES

PROJECT ENDS
 STA. 1637+49
 SB I-94 EXPRESS LANES

LOCATION MAP



NET LENGTH OF IMPROVEMENT 27,721 ft. = 5.250 mi.
 GROSS LENGTH OF IMPROVEMENT 27,721 ft. = 5.250 mi.

Dan Ryan Contract 15

STATE OF ILLINOIS
 DEPARTMENT OF TRANSPORTATION
 DIVISION OF HIGHWAYS

SUBMITTED June 1, 2005
Diane O'Keefe / AP
 DEPUTY DIRECTOR OF HIGHWAYS, REGION ENGINEER

20
 ENGINEER OF DESIGN AND ENVIRONMENT

20
 DIRECTOR OF HIGHWAYS, CHIEF ENGINEER

BOWMAN, BARRETT & ASSOCIATES
 SUITE 2650
 130 E. RANDOLPH ST.
 CHICAGO, IL 60601

Edwards AND Kelcey
 ONE NORTH FRANKLIN
 SUITE 500
 CHICAGO, IL 60606

**PRINTED BY THE AUTHORITY
 OF THE STATE OF ILLINOIS**