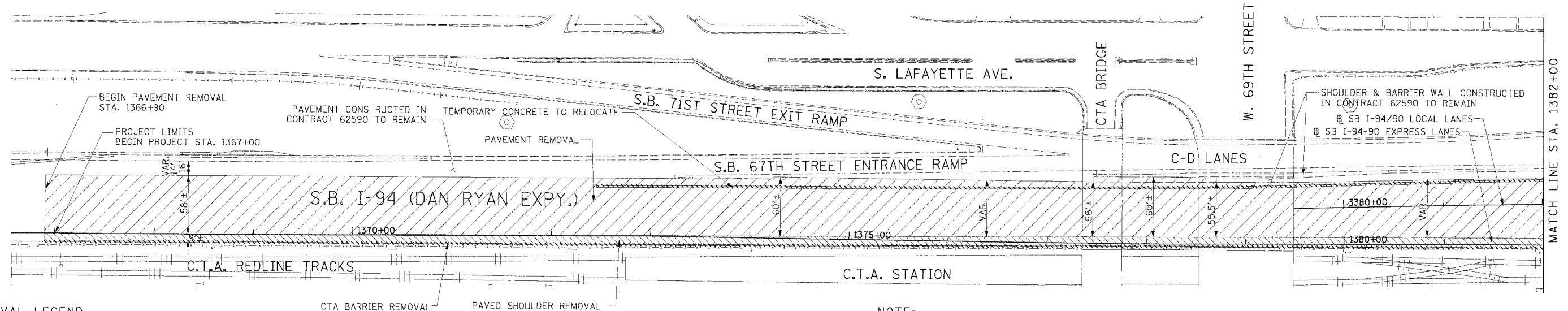
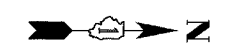


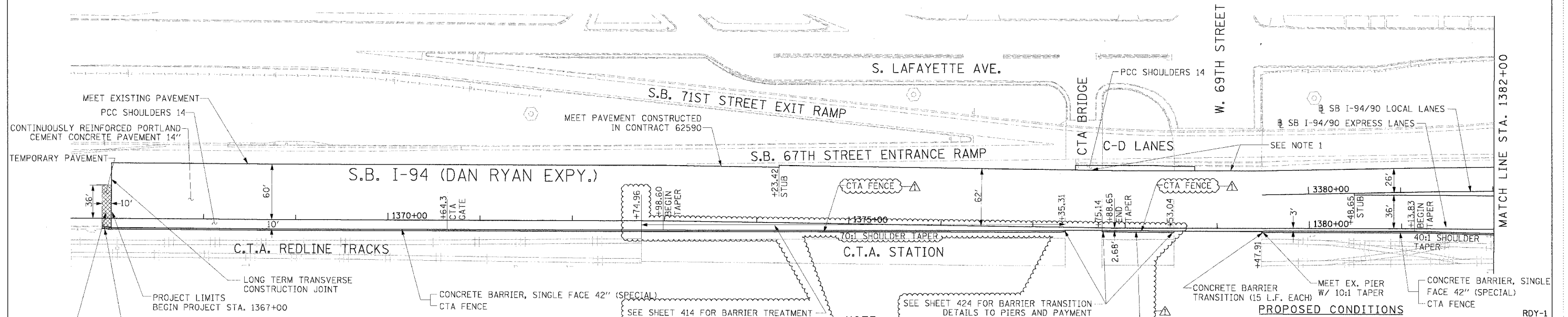
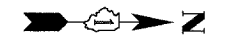
F.A.I. RTE.	SECTION	COUNTY	TOTAL SHEETS	SHEET NO.
94/90		COOK	598	50
STA.	TO STA.			
FED. ROAD DIST. NO.	ILLINOIS	FED. AID PROJECT		
62302	(1818, ETC.)	2324.6-1P1R-9		



- REMOVAL LEGEND**
- PAVEMENT REMOVAL
 - PAVED SHOULDER REMOVAL
 - COMBINATION CURB AND GUTTER REMOVAL
 - CONCRETE BARRIER OR GUARD RAIL REMOVAL

NOTE:
1. THE LOCATION OF PAVEMENT CONSTRUCTED IN PREVIOUS CONTRACTS IS BASED OFF OF CONTRACT PLAN DRAWINGS. THE CONTRACTOR MUST VERIFY LIMITS OF PREVIOUS CONSTRUCTION IN THE FIELD.

EXISTING CONDITIONS & REMOVALS



NOTE:
1. BRIDGE OVER EXPRESS LANES OMITTED FOR CLARITY.
SEE SHEET 414 FOR BARRIER TREATMENT AT CTA STATION AND PAYMENT

STATIONING
 +###.## STATION PROVIDED FROM THE SB I-90/94 EXPRESS LANES
 (+###.##) STATION PROVIDED FROM THE SB I-90/94 LOCAL LANES
 [+###.##] STATION PROVIDED FROM THE SLIP RAMP

- LEGEND**
- TEMPORARY PAVEMENT (INTERSTATE)/TEMPORARY SHOULDER
 - TEMPORARY CONCRETE BARRIER

REVISIONS	
NAME	DATE
ADDENDUM 1	8/12/05

ILLINOIS DEPARTMENT OF TRANSPORTATION
 F.A.I. 94/90 (DAN RYAN EXPRESSWAY)
 31ST STREET TO 71ST STREET
 SB EXPRESS LANE RECONSTRUCTION
 EXISTING AND PROPOSED PLAN
 SOUTHBOUND STA. 1367+00 TO STA. 1382+00
 SCALE: 1"=50'
 DATE: 7/7/05
 DRAWN BY: TAI
 CHECKED BY: PJM

Edwards AND Kelcey
 ONE NORTH FRANKLIN CHICAGO, IL 60606
 PHONE: (312) 251-3000
 FAX: (312) 251-3015
 WEB: WWW.EXCORP.COM

08/10/2005 02:28:32 PM