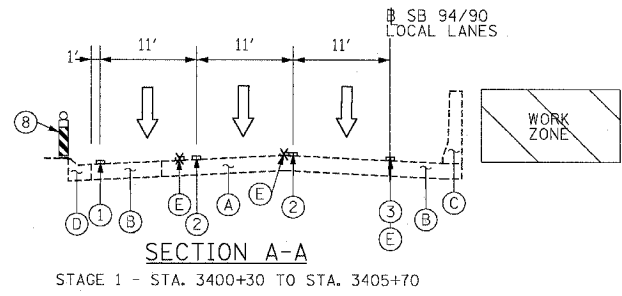
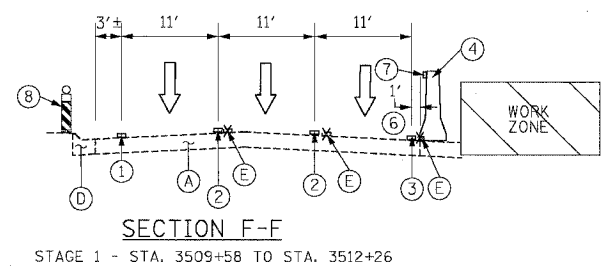


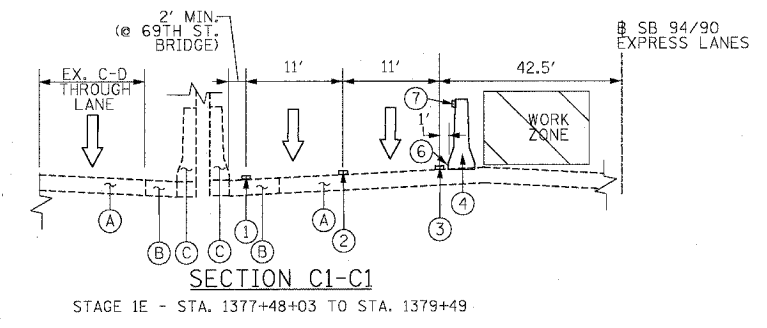
F.A.I. RTE.	SECTION	COUNTY	TOTAL SHEETS	SHEET NO.
94/90		COOK	598	87
STA.	TO STA.			
FED. ROAD DIST. NO. ILLINOIS FED. AID PROJECT				
62302 • (1818, ETC, 2324.6-1P)R-9				



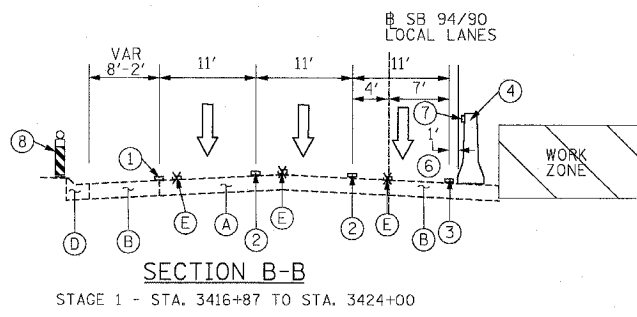
SECTION A-A
STAGE 1 - STA. 3400+30 TO STA. 3405+70



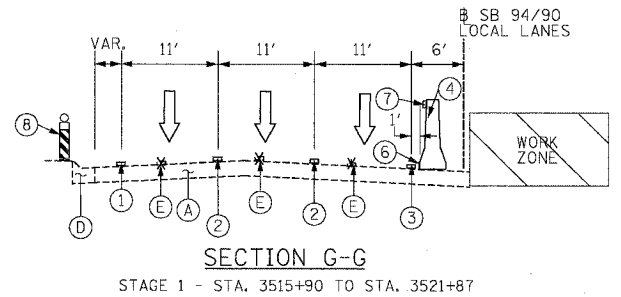
SECTION F-F
STAGE 1 - STA. 3509+58 TO STA. 3512+26



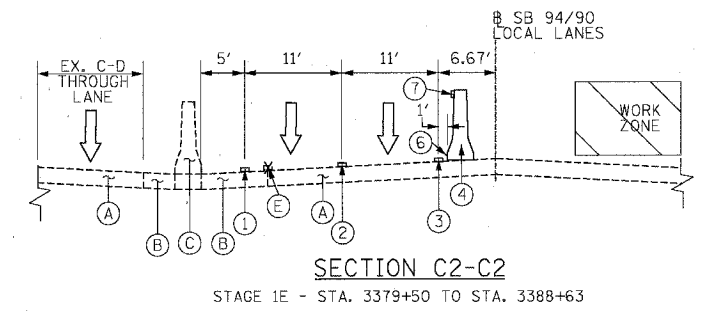
SECTION C1-C1
STAGE 1E - STA. 1377+48+03 TO STA. 1379+49



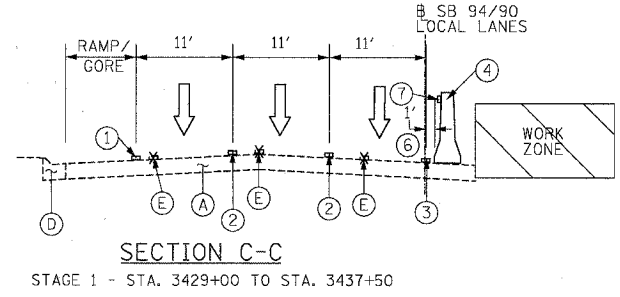
SECTION B-B
STAGE 1 - STA. 3416+87 TO STA. 3424+00



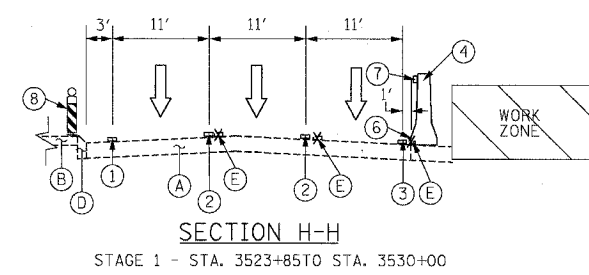
SECTION G-G
STAGE 1 - STA. 3515+90 TO STA. 3521+87



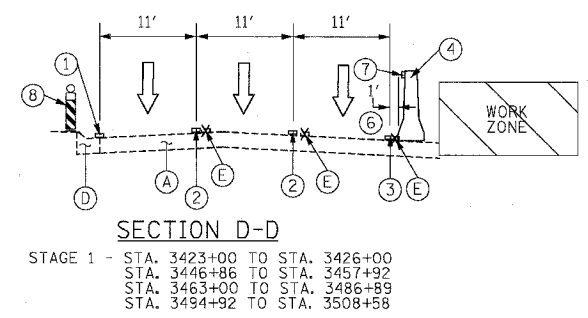
SECTION C2-C2
STAGE 1E - STA. 3379+50 TO STA. 3388+63



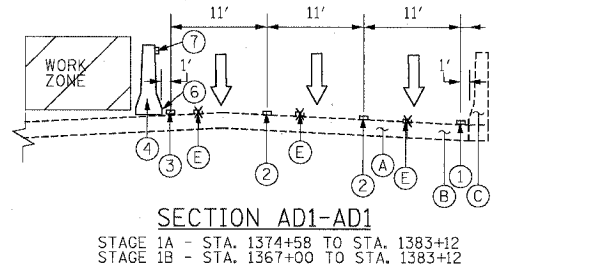
SECTION C-C
STAGE 1 - STA. 3429+00 TO STA. 3437+50



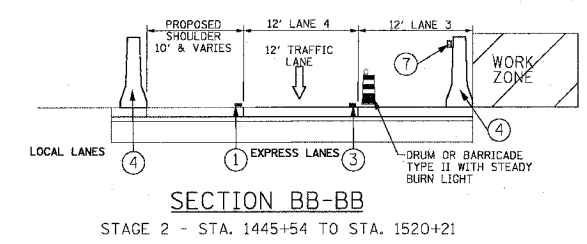
SECTION H-H
STAGE 1 - STA. 3523+85 TO STA. 3530+00



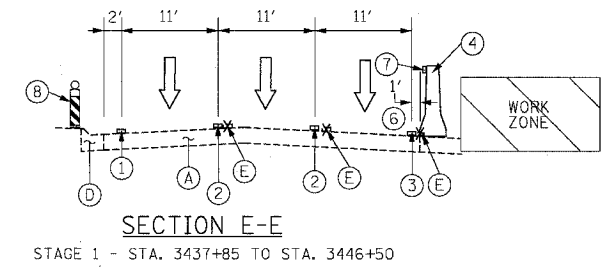
SECTION D-D
STAGE 1 - STA. 3423+00 TO STA. 3426+00
STA. 3446+86 TO STA. 3457+92
STA. 3463+00 TO STA. 3486+89
STA. 3494+92 TO STA. 3508+58



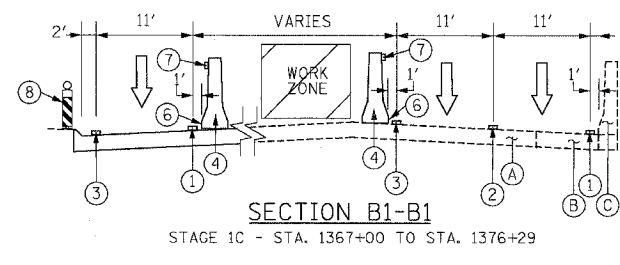
SECTION AD1-AD1
STAGE 1A - STA. 1374+58 TO STA. 1383+12
STAGE 1B - STA. 1367+00 TO STA. 1383+12



SECTION BB-BB
STAGE 2 - STA. 1445+54 TO STA. 1520+21



SECTION E-E
STAGE 1 - STA. 3437+85 TO STA. 3446+50



SECTION B1-B1
STAGE 1C - STA. 1367+00 TO STA. 1376+29

- PROPOSED LEGEND**
- ① PAVEMENT MARKING - LINE 4" (WHITE)
 - ② PAVEMENT MARKING - LINE 5" (WHITE, SKIP DASH)
 - ③ PAVEMENT MARKING - LINE 4" (YELLOW)
 - ④ TEMPORARY CONCRETE BARRIER
 - ⑤ TEMPORARY PAVEMENT
 - ⑥ TEMPORARY PAVEMENT MARKING - LINE 6"
 - ⑦ MONODIRECTIONAL PRISMATIC BARRIER REFLECTOR
 - ⑧ VERTICAL PANEL WITH STEADY BURN LIGHT

- EXISTING LEGEND**
- (A) PAVEMENT
 - (B) SHOULDER
 - (C) BARRIER WALL
 - (D) CURB & GUTTER
 - (E) PAVEMENT MARKING

REVISIONS	
NAME	DATE

ILLINOIS DEPARTMENT OF TRANSPORTATION
 F.A.I. 94/90 (DAN RYAN EXPRESSWAY)
 31ST STREET TO 71ST STREET
 SB EXPRESS LANE RECONSTRUCTION
 MAINTENANCE OF TRAFFIC
 TYPICAL SECTIONS
 SOUTHBOUND DAN RYAN

SCALE: NONE
 DATE: 7/7/05
 DRAWN BY: TAI
 CHECKED BY: PJM



P:\030009\030009\030009.dwg 14875 CALDWELL\150428.dwg 06/24/2005 09:45:33 AM