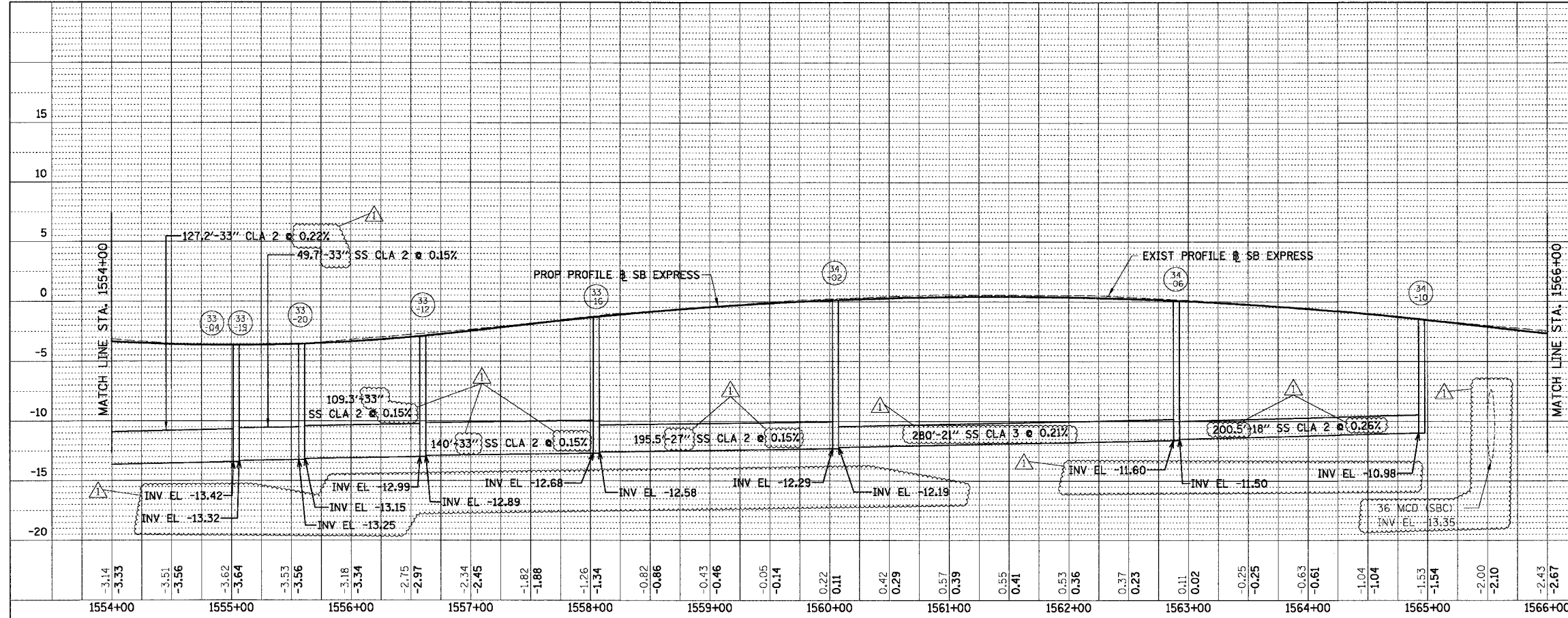
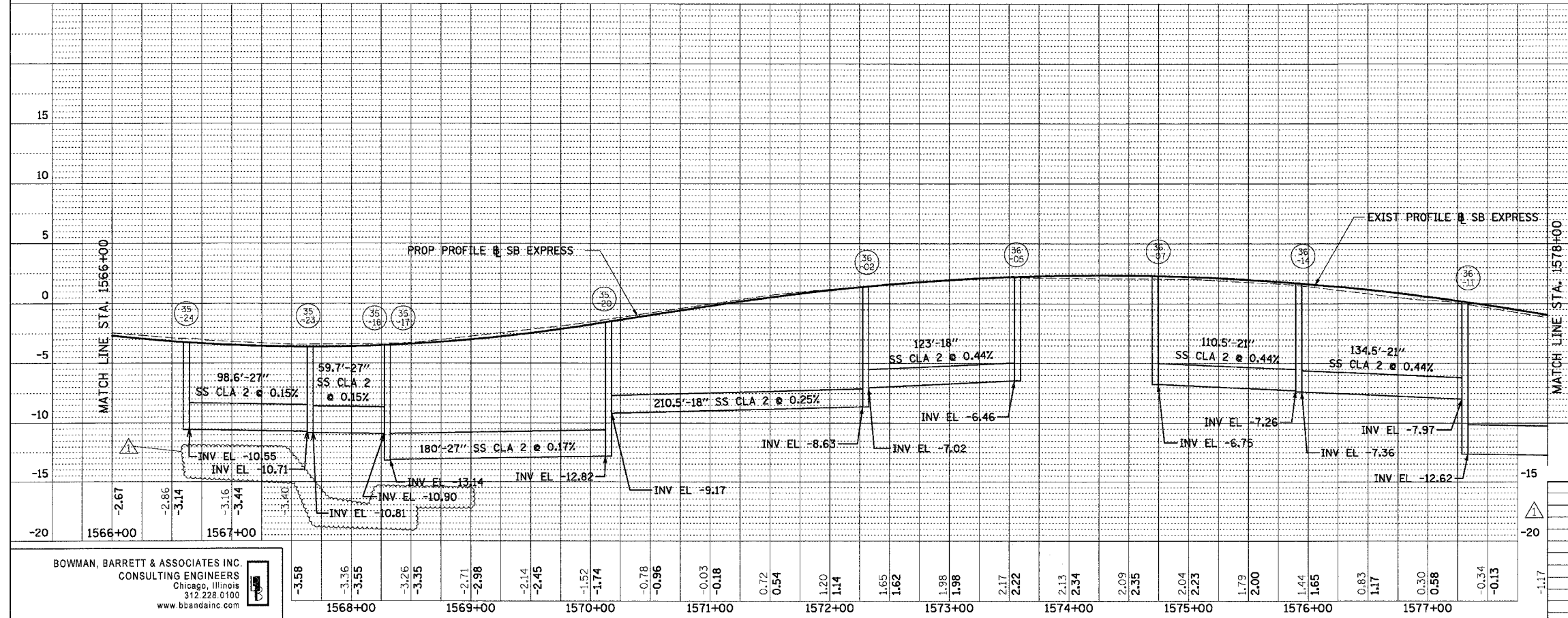


F.A.I.	SECTION	COUNTY	TOTAL SHEETS	SHEET NO.
94/90	*	COOK	598	219
STA.		TO STA.		
FED. ROAD DIST. NO.	ILLINOIS	FED. AID PROJECT		

PLAN	SURVEYED	BY	DATE
	NOTE BOOK		
	NO. OF WAY CHECKED		
	NO. OF FILE		



PLAN	SURVEYED	BY	DATE
	NOTE BOOK		
	NO. OF WAY CHECKED		
	NO. OF FILE		



REVISIONS	
NAME	DATE
ADDENDUM 1	8/12/05

ILLINOIS DEPARTMENT OF TRANSPORTATION  
 F.A.I. 94/90 (DAN RYAN EXPRESSWAY)  
 31ST STREET TO 71ST STREET  
 SB EXPRESS LANE RECONSTRUCTION  
 PROPOSED DRAINAGE PROFILE  
 SOUTHBOUND STA. 1554+00 TO STA. 1578+00

SCALE: 1" = 50' VERT  
 1" = 50' HORIZ  
 DATE: 07/07/05

DRAWN BY: OC  
 CHECKED BY: DOM

BOWMAN, BARRETT & ASSOCIATES INC.  
 CONSULTING ENGINEERS  
 Chicago, Illinois  
 312.228.0100  
 www.bbainc.com

8/11/2005 10:31:46 AM