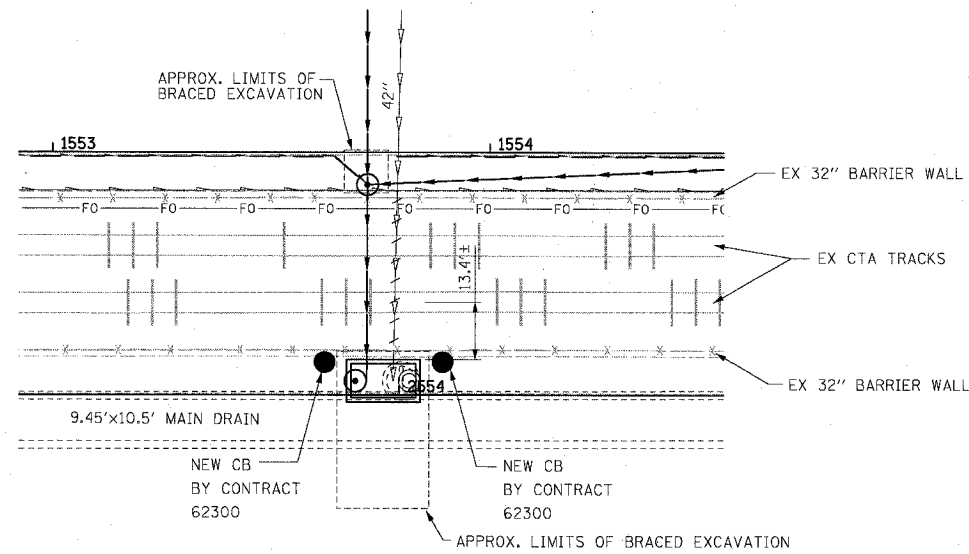
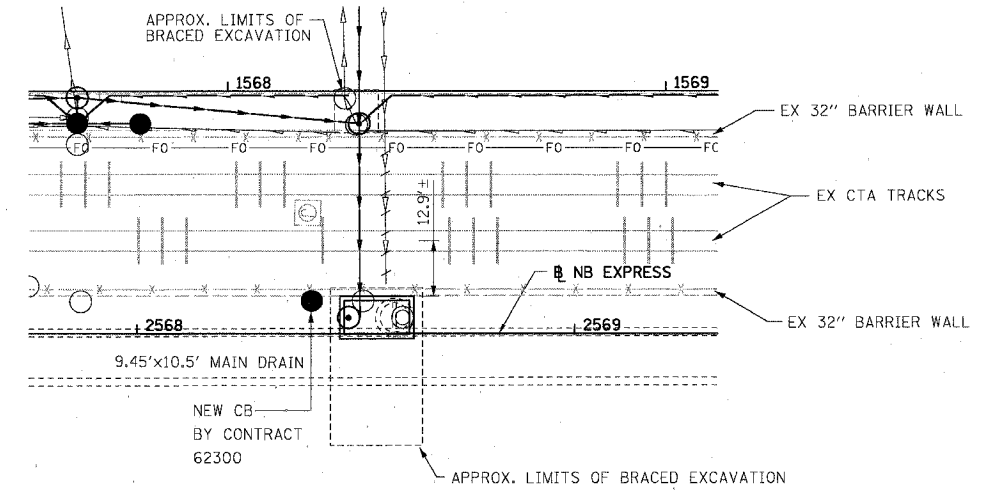


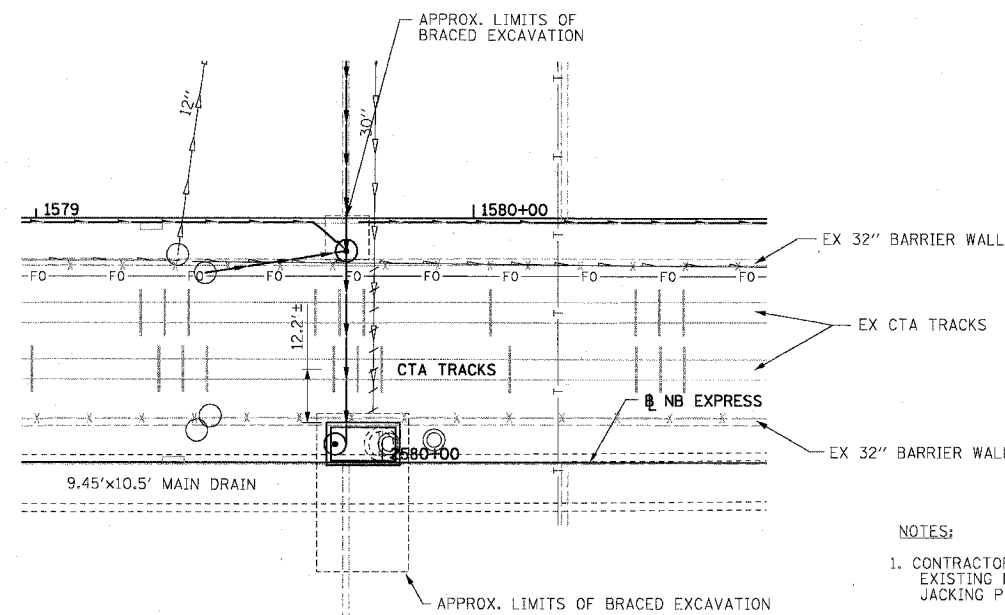
F.A.I.	SECTION	COUNTY	TOTAL SHEETS	SHEET NO.
94/90		COOK	598	225
STA.	TO STA.			
FED. ROAD DIST. NO.	ILLINOIS FED. AID PROJECT			
62302	1818, ETC, 2324.6-1PR-9			



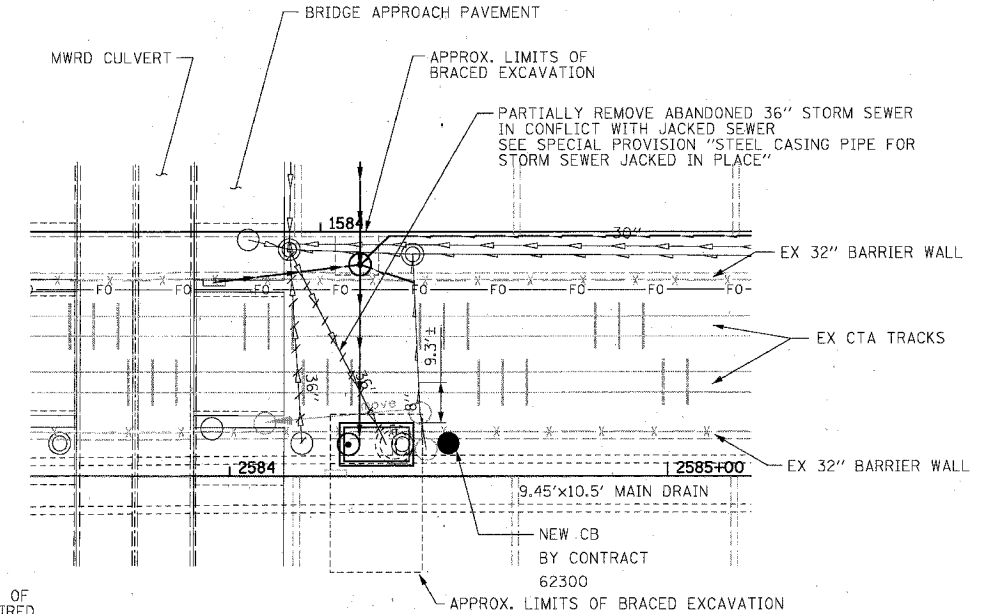
JUNCTION CHAMBER TYPE 2
NO. 32-01



JUNCTION CHAMBER TYPE 2
NO. 35-01



JUNCTION CHAMBER TYPE 2
NO. 37-01



JUNCTION CHAMBER TYPE 2
NO. 38-01

NOTES:

1. CONTRACTOR MUST FIELD VERIFY LOCATION OF EXISTING DROP MANHOLES AND ADJUST LOCATIONS OF JACKING PIT AND STORM SEWER JACKING AS REQUIRED.
2. SEE SHEET 223 FOR DETAILS OF BRACED EXCAVATION
3. SEE SHEETS 453 THROUGH 474 FOR DETAILS OF JUNCTION CHAMBER TYPE 2
4. SEE DRAINAGE PLANS FOR DETAILS OF OTHER DRAINAGE STRUCTURES
5. SEE SPECIAL PROVISIONS FOR REQUIREMENTS FOR WORK IN AND AROUND THE CTA OPERATING AREA.
6. DIMENSIONS PROVIDED BETWEEN JUNCTION CHAMBER AND CENTERLINE OF NEAR CTA TRACK BASED ON LIMITED AVAILABLE INFORMATION. CONTRACTOR MUST FIELD VERIFY LOCATIONS AND ADJUST JACKING PIT AS NECESSARY.

BOWMAN, BARRETT & ASSOCIATES INC.
CONSULTING ENGINEERS
Chicago, Illinois
312.228.0100
www.bbandainc.com



REVISIONS	
NAME	DATE

ILLINOIS DEPARTMENT OF TRANSPORTATION
F.A.I. 94/90 (DAN RYAN EXPRESSWAY)
31ST STREET TO 71ST STREET
SB EXPRESS LANE RECONSTRUCTION
STORM SEWER JACKING AND
JUNCTION CHAMBER DETAIL PLANS
SCALE: 1"=20'
DATE: 07/07/05
DRAWN BY: RGR
CHECKED BY: DDM

DDP02
04-89-43 PM
06/29/2005