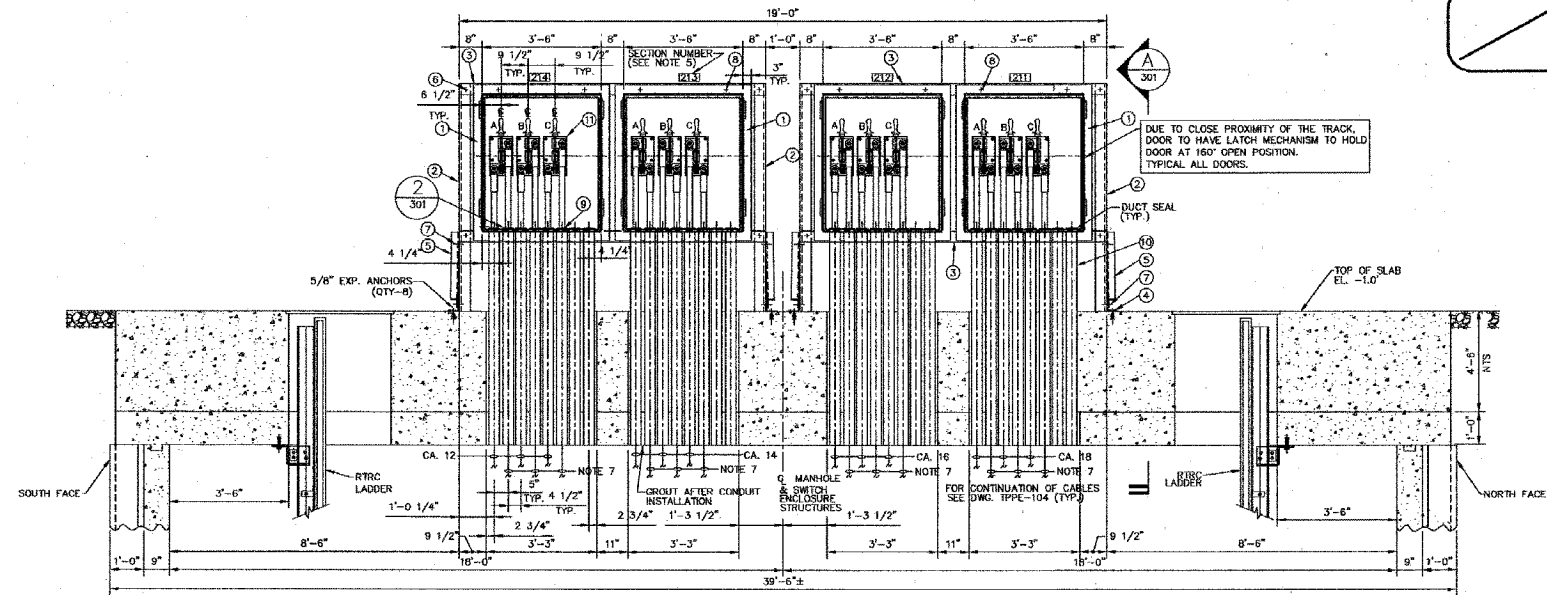
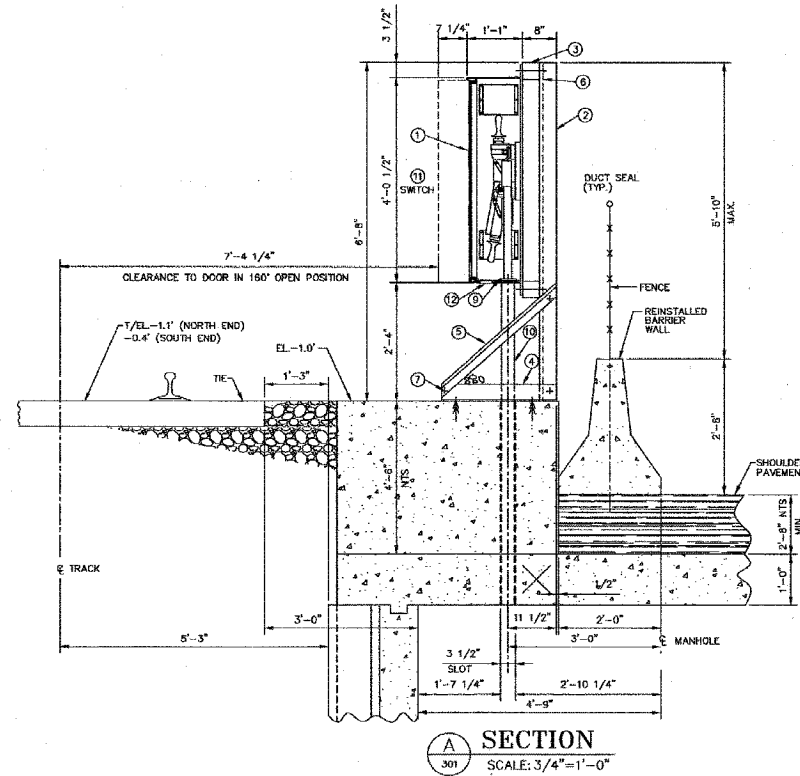


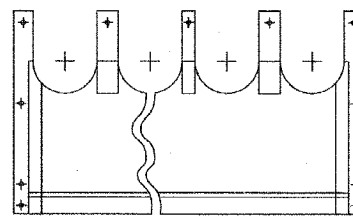
| | | | | |
|---------------------|----------|---------------------------|--------------|-----------|
| F.A.I. | SECTION | COUNTY | TOTAL SHEETS | SHEET NO. |
| 94/90 | * | COOK | 598 | 261 |
| STA. | | TO STA. | | |
| FED. ROAD DIST. NO. | ILLINOIS | FED. AID PROJECT | | |
| 62302 | | *1818, ETC, 2324.6-1PJR-9 | | |



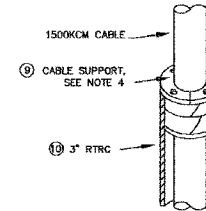
FRONT VIEW
SCALE: 1/2" = 1'-0"
(LOOKING WEST)



SECTION
SCALE: 3/4" = 1'-0"



2
SCALE: NONE
BOTTOM PANEL



1
SCALE: NONE
CABLE SUPPORT INSTALLATION

BILL OF MATERIAL - SWITCH ENCLOSURES

- ① (4) FIBERGLASS ENCLOSURE WITH FLANGE LIP (4-GANG TYPE) 42" WIDE x 48 1/2" HIGH x 13" DEEP SEE DWG. STP-23.
- ② (4) 4" x 4" x 3/8" ANGLE 9'-0" LG (ASTM A36 STRUCTURAL STEEL) GALVANIZED.
- ③ (4) 4" x 4" PINE 9'-0" LG. TREATED WITH AMPA TYPE P1(95) FOR CREO-PINE.
- ④ (4) 4" x 4" x 3/8" ANGLE 2'-3" LG (ASTM A36 STRUCTURAL STEEL) GALVANIZED.
- ⑤ (4) 3" x 3" x 1/4" (BRACE ANGLE) 3'-0" LG (ASTM A36 STRUCTURAL STEEL) GALVANIZED.
- ⑥ (8) 3/16" THURBOLT, NUT, 2 WASHERS (IN 13/16" Ø HOLES) A307 GALVANIZED.
- ⑦ (8) 1/2" BOLT & WASHERS A307 GALVANIZED.
- ⑧ (16) 1/2" STAINLESS STEEL BOLT, NUT, SQUARE WASHER & LOCKWASHER.
- ⑨ (24) CABLE SUPPORT, SEE DETAIL 1.
- ⑩ (32) 3" RTRC CONDUIT 7'-10" LONG
- ⑪ (12) 1200 AMP, 600V DC SPST KNIFE SWITCH, FOR DETAILS SEE DWG. STP-05
- ⑫ (3) DRAIN PLUG PER ENCLOSURE.

NOTES:

- 1. SWITCH ENCLOSURES ARE SHOWN WITHOUT DOORS.
- 2. FOR SWITCH ENCLOSURE DETAILS SEE DRAWING STP-23.
- 3. SEAL ALL MOUNTING BOLTS AND ANY PENETRATION THROUGH THE ENCLOSURE WITH RTV SILICON COMPOUND PER ENCLOSURE MANUFACTURER'S INSTRUCTIONS.
- 4. FOR CABLE SUPPORT USE CONDUIT SEALING BUSHING TYPE CSSE-300-20-SEC (1500KCM) MANUFACTURED BY O-Z/GEDNEY CO. OR SPE-30 MAC PRODUCTS, INC.
- 5. FOR PORCELAIN ENAMEL SWITCH ENCLOSURE NUMBER OR LETTER AND ENCLOSURE DESIGNATIONS SEE DRAWING STP-28.
- 6. FOR MANHOLE STRUCTURAL DETAILS SEE DWG. TPPE-501, FOR CABLE LAYOUT SEE DWG. TPPE-105.
- 7. FOR CABLES TO CONTACT RAIL SEE HINB'S DWGSS.

In Charge: HS
Designed By: DP
Drawn By: ND
Checked By: MA
Approved By: HS

LDP
Laramore, Douglass And Popham, Inc.
Consulting Engineers
IN ASSOCIATION WITH
Rubinos & Mesa Engineers, Inc.
Architects • Engineers • Construction Management
Environmental Design International
Geotechnical Engineering Corporation
Ground Engineering Consultants

| | | | |
|-----|----------|-----------------|-------|
| No. | Date | Revision | App'd |
| 1 | 05-27-03 | ISSUED FOR BIDS | HS |

Chicago Transit Authority
Engineering Department
cta

SUBSTATION ENHANCEMENT DAN RYAN-RED LINE
PE, 42, 50, PR & 79
PERSHING SUBSTATION
SWITCH ENCLOSURES 211, 212, 213 & 214
Scale: AS NOTED Date: 05-27-03 J.O. No.:

Sheet No.
TPPE-301
of

BOWMAN, BARRETT & ASSOCIATES INC.
CONSULTING ENGINEERS
Chicago, Illinois
312.228.0100
www.bbainc.com

FOR INFORMATION ONLY

| REVISIONS | NAME | DATE |
|-----------|------|------|
| | | |
| | | |
| | | |
| | | |
| | | |
| | | |
| | | |
| | | |
| | | |

ILLINOIS DEPARTMENT OF TRANSPORTATION
F.A.I. 94/90 (DAN RYAN EXPRESSWAY)
31ST STREET TO 71ST STREET
SB EXPRESS LANE RECONSTRUCTION
CTA PERSHING
SUBSTATION PLANS
SCALE: NTS DRAWN BY: BDC
DATE: 07/07/05 CHECKED BY: JDC