

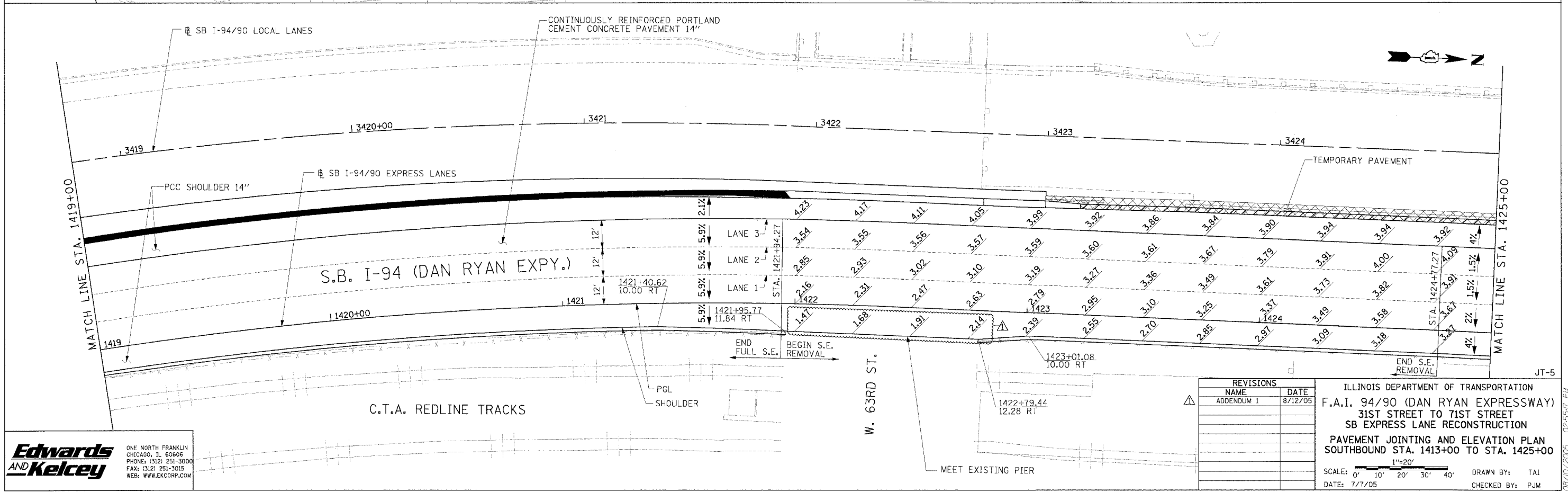
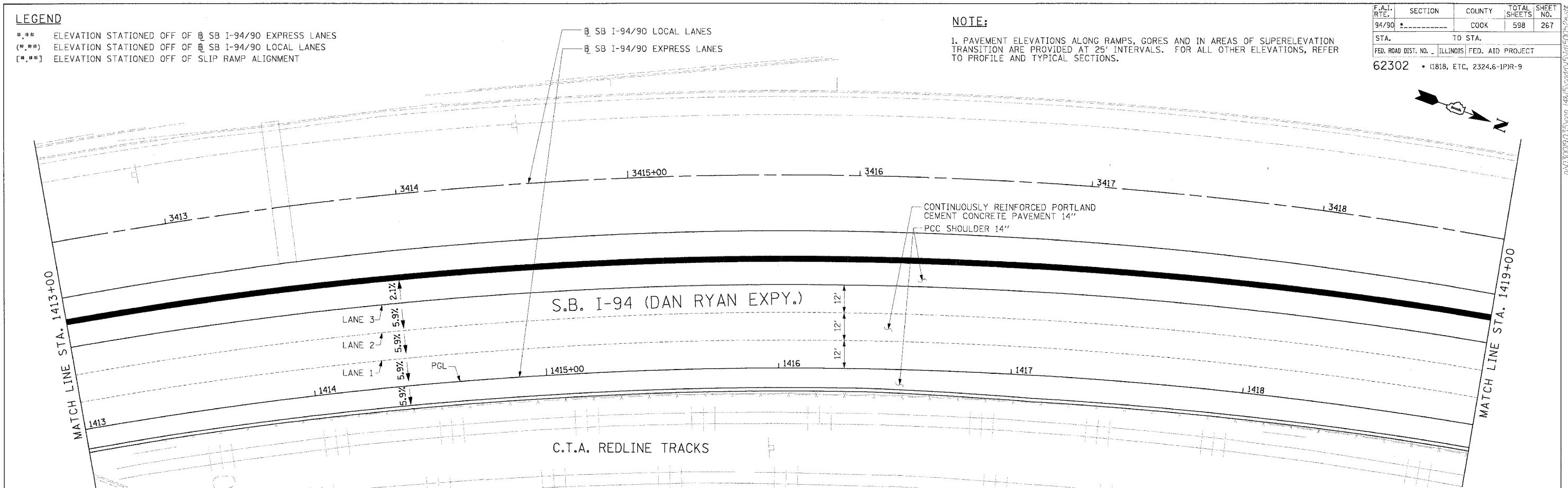
LEGEND

- ### ELEVATION STATIONED OFF OF SB I-94/90 EXPRESS LANES
- (###) ELEVATION STATIONED OFF OF SB I-94/90 LOCAL LANES
- [###] ELEVATION STATIONED OFF OF SLIP RAMP ALIGNMENT

NOTE:

1. PAVEMENT ELEVATIONS ALONG RAMP, GORES AND IN AREAS OF SUPERELEVATION TRANSITION ARE PROVIDED AT 25' INTERVALS. FOR ALL OTHER ELEVATIONS, REFER TO PROFILE AND TYPICAL SECTIONS.

F.A.I. RTE.	SECTION	COUNTY	TOTAL SHEETS	SHEET NO.
94/90		COOK	598	267
STA.		TO STA.		
62302		1818, ETC, 2324.6-1PR-9		



Edwards AND Kelcey
 ONE NORTH FRANKLIN CHICAGO, IL 60606
 PHONE: (312) 251-3000
 FAX: (312) 251-3015
 WEB: WWW.EKCORP.COM

REVISIONS	
NAME	DATE
ADDENDUM 1	8/12/05

ILLINOIS DEPARTMENT OF TRANSPORTATION
 F.A.I. 94/90 (DAN RYAN EXPRESSWAY)
 31ST STREET TO 71ST STREET
 SB EXPRESS LANE RECONSTRUCTION
 PAVEMENT JOINTING AND ELEVATION PLAN
 SOUTHBOUND STA. 1413+00 TO STA. 1425+00

SCALE: 0' 10' 20' 30' 40'
 DATE: 7/7/05

DRAWN BY: TAI
 CHECKED BY: PJM

P:\03009355\03009355.dwg (48/15) 08/10/2005 09:55:17 PM