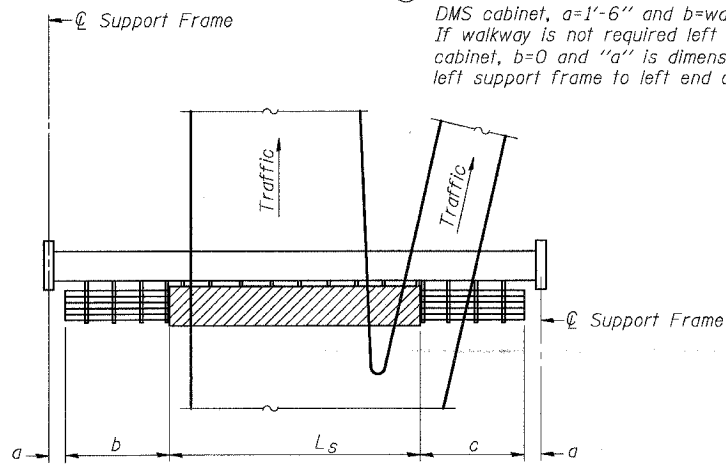


STATE OF ILLINOIS
DEPARTMENT OF TRANSPORTATION

ROUTE NO.	SECTION	COUNTY	LISTED SHEETS	SHEET NO.
			598	320
F.A.I.		ILLINOIS FED. AID PROJECT-		
FED. ROAD DIST. NO. 7				

① If walkway is required left of the DMS cabinet, $a=1'-6''$ and b =walkway lengths. If walkway is not required left of the DMS cabinet, $b=0$ and " a " is dimension from left support frame to left end of cabinet.

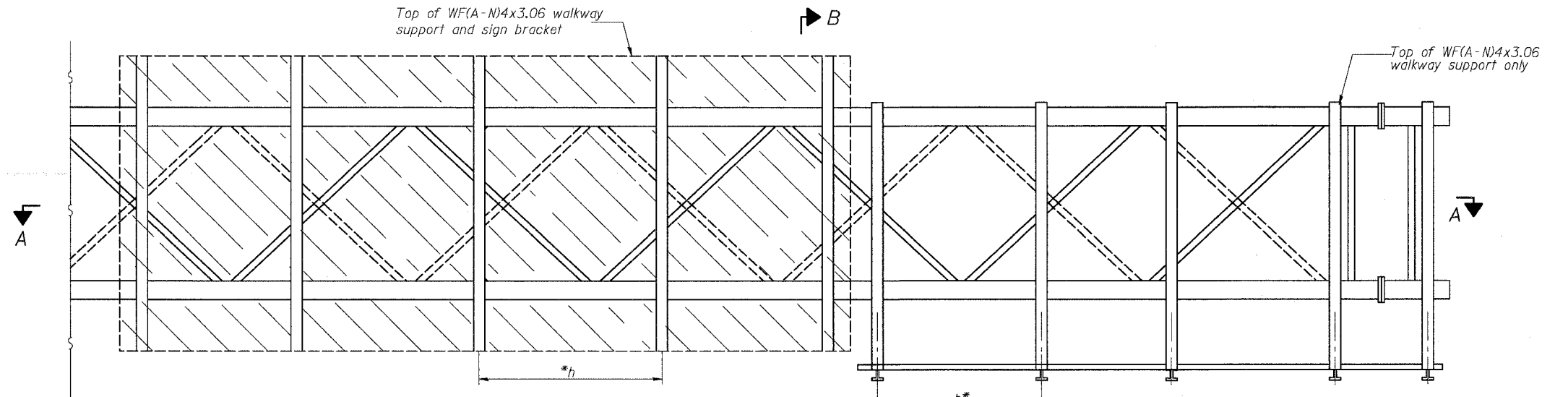


PLAN
WALKWAY AND HANDRAIL SKETCH
(Road plan beneath truss varies)

BRACKET TABLE

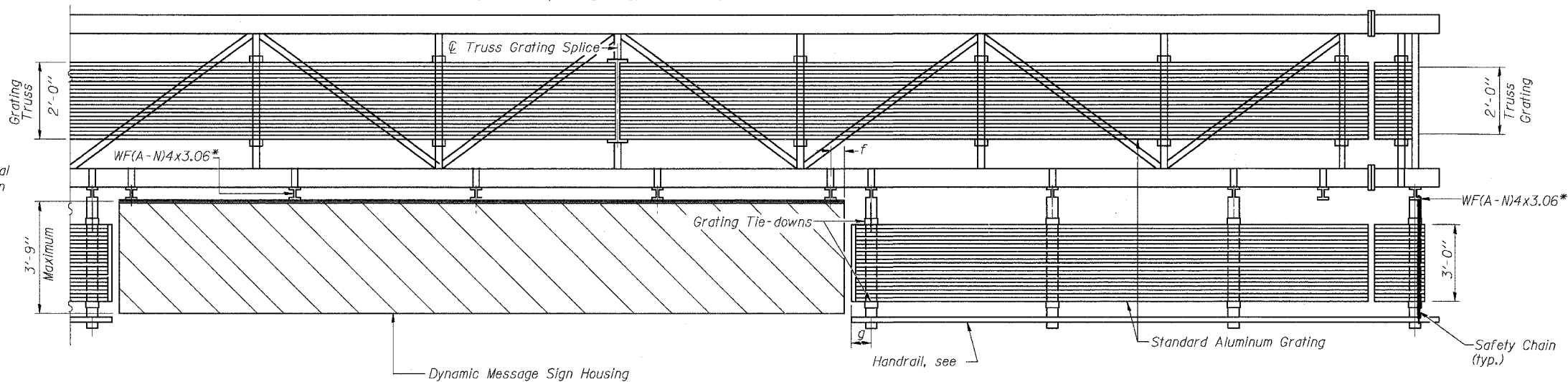
WF(A-N)4x3.06 ASTM B308, Alloy 6061-T6		
Sign Width		Number Brackets Required
Greater Than	Less Than or Equal To	
	8'-0"	2
8'-0"	14'-0"	3
14'-0"	20'-0"	4
20'-0"	26'-0"	5
26'-0"	32'-0"	6

Walkway and Truss Grating width dimensions are nominal and may vary $\pm 1/2''$ based on available standard widths.



TYPICAL FRONT ELEVATION
With handrail omitted for clarity.
For Section B-B, see Base Sheet OS-A-10.

Bracket and grating dimensions are nominal and will vary based on actual DMS cabinet dimensions plus manufacturer's mounting devices.



SECTION A-A

Handrail and walkway shall span a minimum of three brackets between splices and/or gap joints. Place all sign and walkway brackets as close to panel points as practical. Grating and handrail splices placed as needed.

Truss grating to facilitate inspection shall run full length (center to center of support frames) $\pm 12''$ on overhead trusses. Cost of truss grating is included in "Overhead Sign Structure".

Notes: *Space walkway brackets WF(A-N)4x3.06 and sign brackets WF(A-N)4x3.06 for efficiency and within limits shown:

- $f = 12''$ maximum, 4'' minimum (End of sign to ϕ of nearest bracket)
- $g = 12''$ maximum, 4'' minimum (End of walkway grating to ϕ of nearest support bracket)
- $h = 6'-0''$ maximum (ϕ to ϕ sign and/or walkway support brackets, WF(A-N)4x3.06)

For Details T and W, Section B-B and Grating Splice Details, see Base Sheet OS-A-10-DMS. For Handrail Splice Details, see Base Sheet OS-A-11.

Structure Number	Station	a	b	c	L_s	Walkway Grating and Handrail Lengths
IS0161094R055.64	3586+80	6.70'	4.01'	4.42'	26.08'	69.83'

DESIGNED	
CHECKED	
DRAWN	
CHECKED	

EXAMINED	19
PASSED	ENGINEER OF STRUCTURAL SERVICES
	ENGINEER OF BRIDGES AND STRUCTURES

NUMBER	REVISION	DATE

**OVERHEAD SIGN STRUCTURES
ALUMINUM WALKWAY DETAILS**

ILLINOIS DEPARTMENT OF TRANSPORTATION
F.A.I. 94/90 (DAN RYAN EXPRESSWAY)
31ST STREET TO 71ST STREET
SB EXPRESS LANE RECONSTRUCTION

SGN-23