

STATE OF ILLINOIS
DEPARTMENT OF TRANSPORTATION

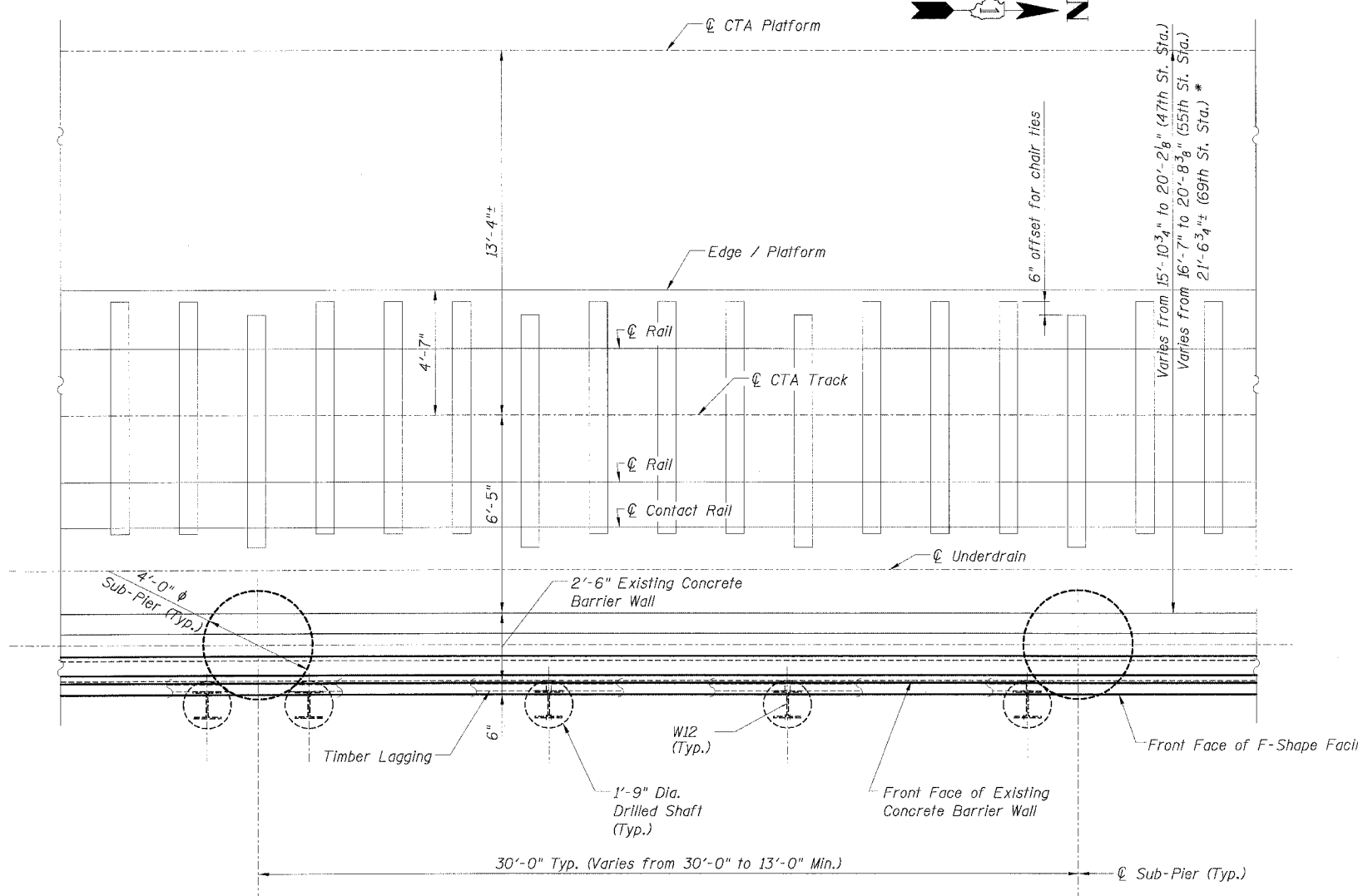
F.A.I. RYE:	SECTION	COUNTY	TOTAL SHEETS	SHEET NO.
90/94	*	COOK	598	413
STA.	TO STA.			
FED. ROAD DIST. NO. 1 ILLINOIS			FED. AID PROJECT	
* (1818, ETC, 2324.6-10)R-9			62302	

BAR SCHEDULE
FOR 1'-4 1/2" FACING @ ONE LIGHT FDN.

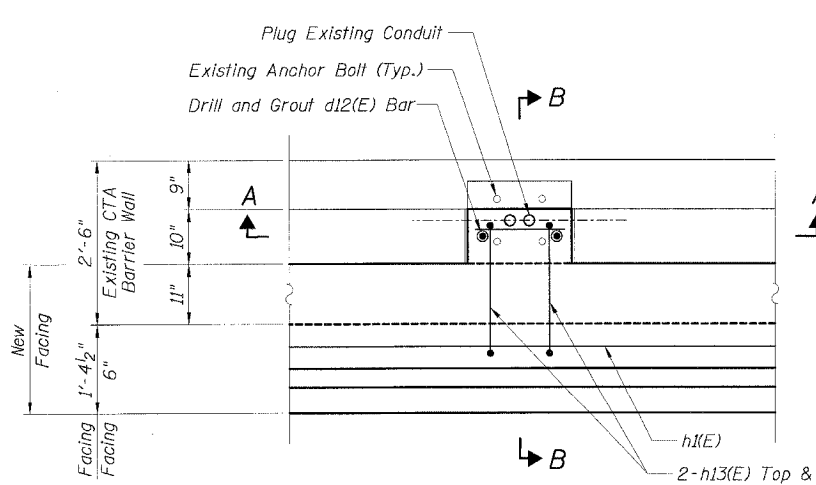
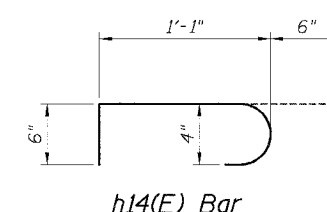
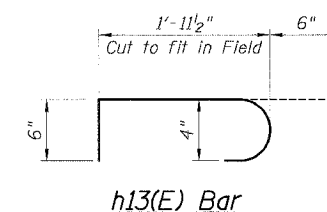
Bar	No.	Size	Length	Shape
d12(E)	2	#5	2'-9"	—
h12(E)	3	#4	1'-4"	—
h13(E)	4	#4	3'-0"	⌋

BAR SCHEDULE
FOR 6" FACING @ ONE LIGHT FDN.

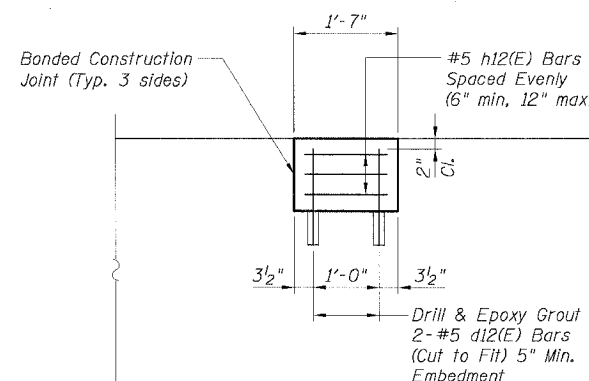
Bar	No.	Size	Length	Shape
d12(E)	2	#5	2'-9"	—
h12(E)	3	#4	1'-4"	—
h14(E)	4	#4	2'-1"	⌋



PLAN - (NORTH BOUND SHOWN)
(SOUTH BOUND SIMILAR)

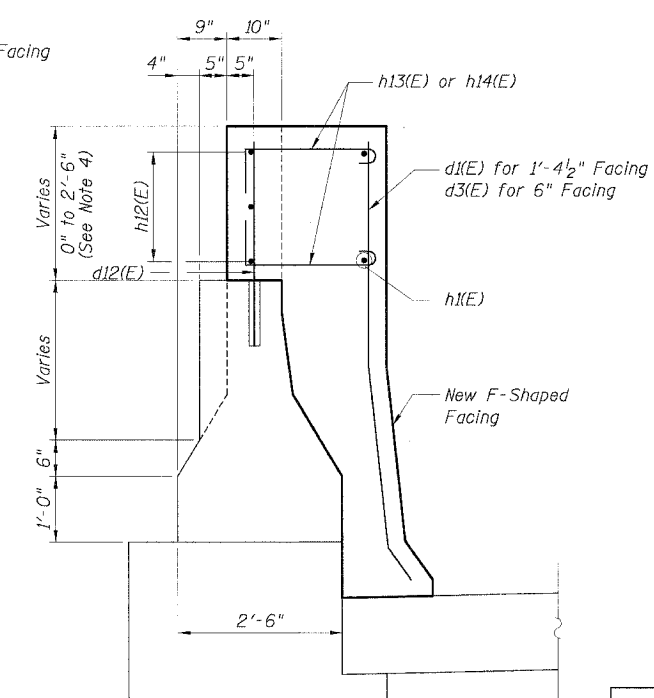


PLAN



SECTION A-A

FACING DETAILS AT
EXISTING LIGHT POLE FOUNDATION



SECTION B-B

NOTES:

- Existing anchor bolts shall remain in place and be blast cleaned to gray metal.
- Drilling and grouting #4 d12(E) bars shall be in accordance with Section 584 of the Standard Specifications.
- The cost of drilling holes, furnishing and placing Epoxy Grout and setting #4 d12(E) bars and blast cleaning existing anchor bolts shall be included in the cost per cubic yard for Concrete Superstructure.
- For depth of existing light pole notch less than 10", do not use reinforcement bars.
- Cast new concrete monolithically with new F-Shape Facing.
- For Facing Details and Sections see Sheet B2.

REVISIONS	
NAME	DATE
MJP	8-12-05

ILLINOIS DEPARTMENT OF TRANSPORTATION
F.A.I. 90/94 (DAN RYAN EXPRESSWAY)
71ST STREET TO 31ST STREET (SB EXPRESS LANES)
EXISTING BARRIER WALL MODIFICATIONS
AT CTA STATIONS
PROPOSED T/S SHOULDER AT OR ABOVE EXISTING
TYPICAL PLAN
SCALE: None DRAWN BY: KWT/CHD
DATE: July 7, 2005 CHECKED BY: RDP

Sheet B5 of 18

CTE | AECOM