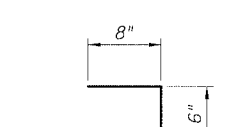
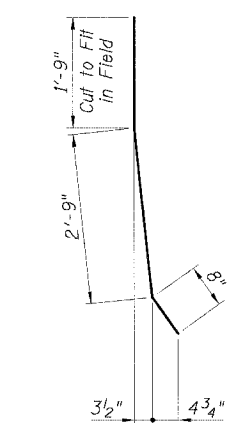
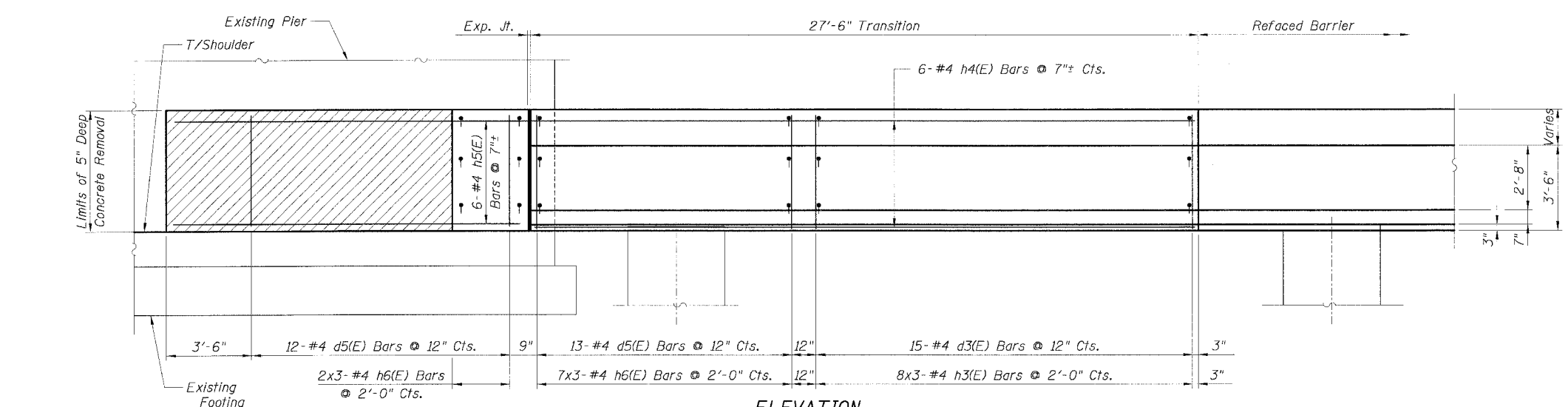
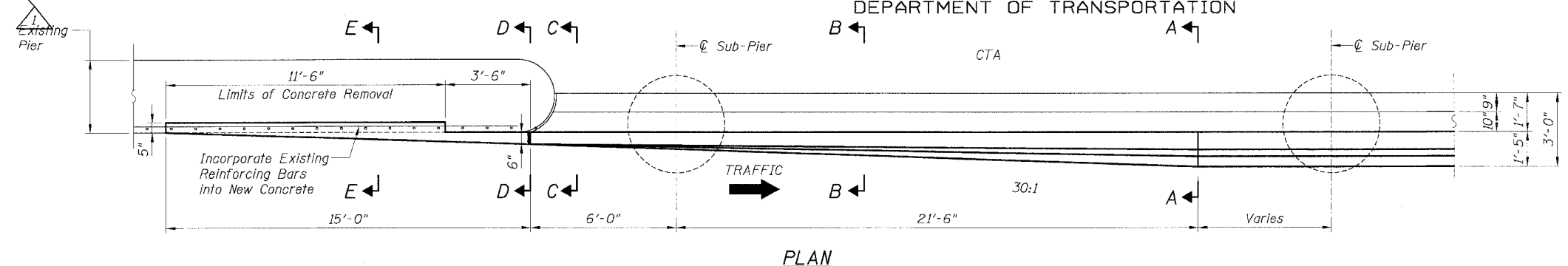


STATE OF ILLINOIS
DEPARTMENT OF TRANSPORTATION

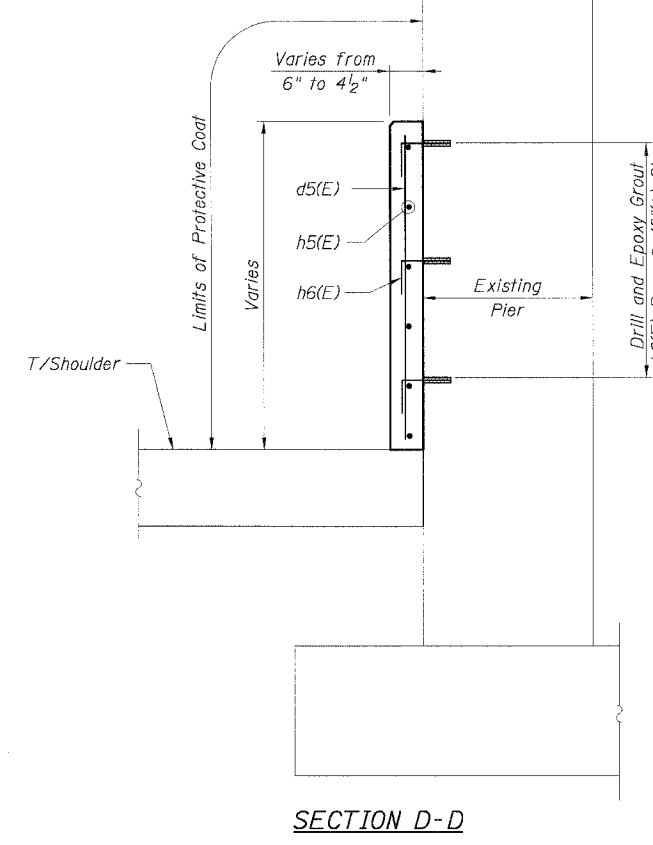
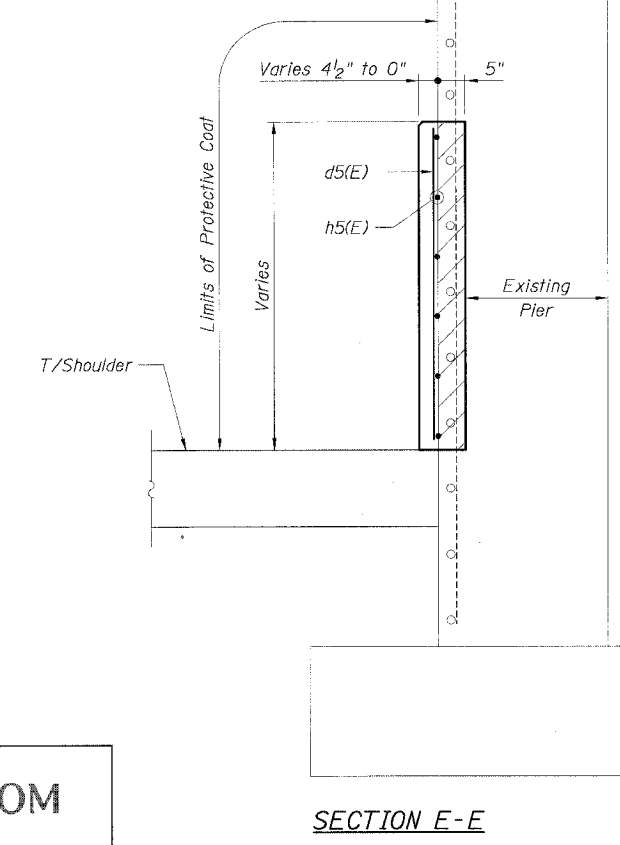
| | | | | |
|-------------|---------|--------|----------------------------------|-----------|
| F.A.I. RTE. | SECTION | COUNTY | TOTAL SHEETS | SHEET NO. |
| 90/94 | | COOK | 598 | 418 |
| STA. | TO STA. | | FED. AID PROJECT | |
| | | | • 11818, ETC, 2324.6-10R-9 62302 | |



BILL OF MATERIAL FOR ONE TRANSITION

| Bar | No. | Size | Length | Shape |
|----------------------------------|---------|----------|--------|-------|
| d3(E) | 15 | #4 | 5'-2" | |
| d5(E) | 25 | #4 | 4'-8" | |
| h3(E) | 48 | #4 | 1'-8" | |
| h4(E) | 6 | #4 | 27'-2" | |
| h5(E) | 6 | #4 | 14'-8" | |
| h6(E) | 27 | #4 | 1'-2" | |
| Item | Unit | Quantity | | |
| Reinforcement Bars, Epoxy Coated | Pound | 372 | | |
| Concrete Superstructure | Cu. Yd. | 4.7 | | |
| Protective Coat | Sq. Yd. | 25 | | |
| Concrete Removal | Cu. Yd. | 0.9 | | |

- NOTES:**
- Drilling and grouting of #4 h3(E) and h6(E) bars shall be in accordance with Section 584 of the Standard Specifications.
 - The cost of drilling holes, furnishing and placing Epoxy Grout and setting #4 h3(E) and h6(E) bars shall be included in the cost per cubic yard for Concrete Superstructure.
 - Exposed existing reinforcement bars shall remain in place and be blast cleaned to gray metal. Reinforcement bars that have been cut or have lost 25% or more of their original cross sectional area shall be supplemented by new epoxy coated reinforcement bars.
 - The cost of supplementing and cleaning existing reinforcement bars shall be included in the cost per cubic yard for Concrete Removal.
 - Provide joints in facing to match those in the existing barrier. See Sheet B7 for details.
 - For Soldier Pile and Lagging Retention System, see Sheets B1, B4 and B5.
 - For Re-faced Barrier Wall Details, see Sheets B4 and B5.
 - For Sections A-A, B-B and C-C, see Sheet B11.
 - For Existing Concrete Repair Details, see Sheet B3.
 - For Facing Details at Existing Light Pole Foundation, see Sheet B5.
 - For locations of Transition, see Roadway Plans.



LEGEND:

Concrete Removal

| REVISIONS | |
|-----------|---------|
| NAME | DATE |
| MJP | 8-12-05 |
| | |
| | |
| | |
| | |
| | |
| | |
| | |
| | |

ILLINOIS DEPARTMENT OF TRANSPORTATION
F.A.I. 90/94 (DAN RYAN EXPRESSWAY)
71ST STREET TO 31ST STREET (SB EXPRESS LANES)
EXISTING BARRIER WALL MODIFICATIONS
AT CTA STATIONS
PROPOSED T/S SHOULDER AT OR ABOVE EXISTING
REFACED BARRIER TO PIER
TRANSITION DETAILS (TAPER)

SCALE: None DRAWN BY: CHD
DATE: July 7, 2005 CHECKED BY: MJP

CTE | AECOM