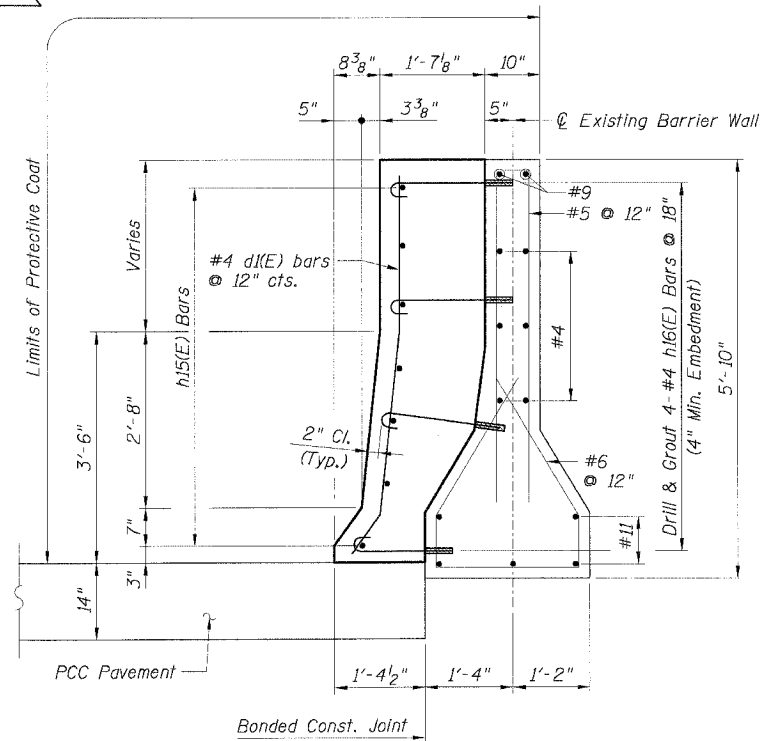
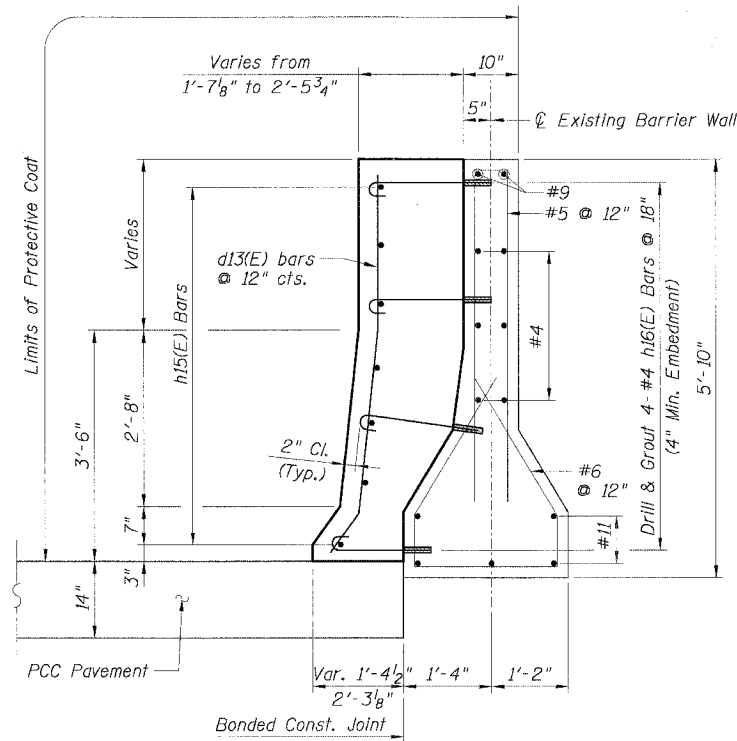


STATE OF ILLINOIS
DEPARTMENT OF TRANSPORTATION

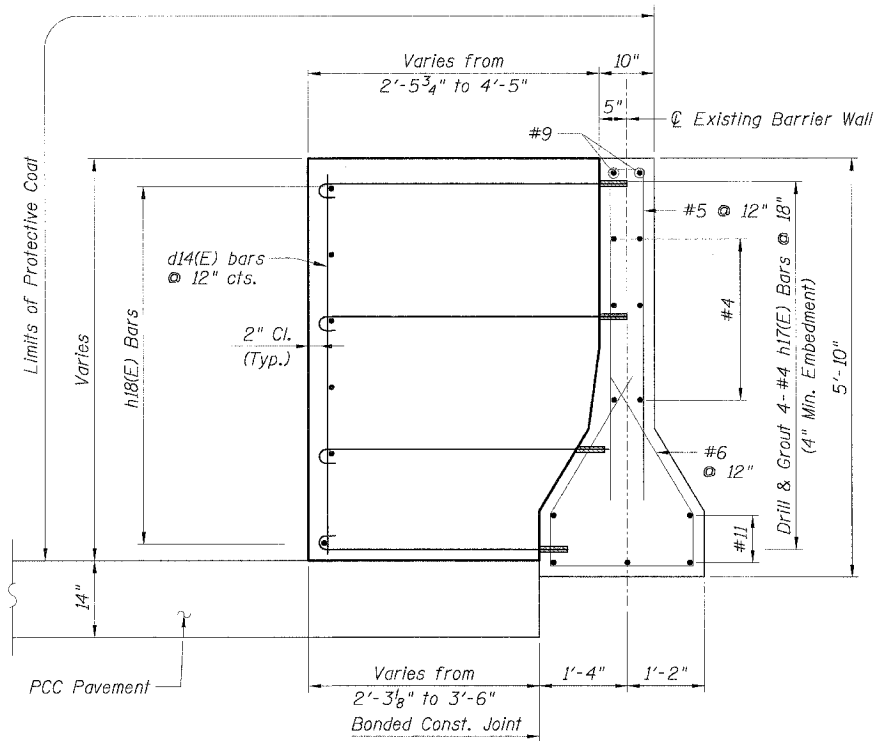
F.A.I. R.T.E.	SECTION	COUNTY	TOTAL SHEETS	SHEET NO.
90/94		COOK	598	424B
STA.	TO STA.			
FED. ROAD DIST. NO. 1	ILLINOIS	FED. AID PROJECT	62302	
• (1816, ETC, 2324.6-10R-9				



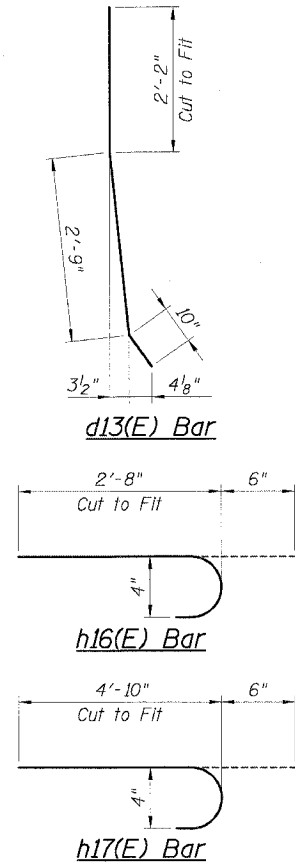
SECTION A-A



SECTION B-B



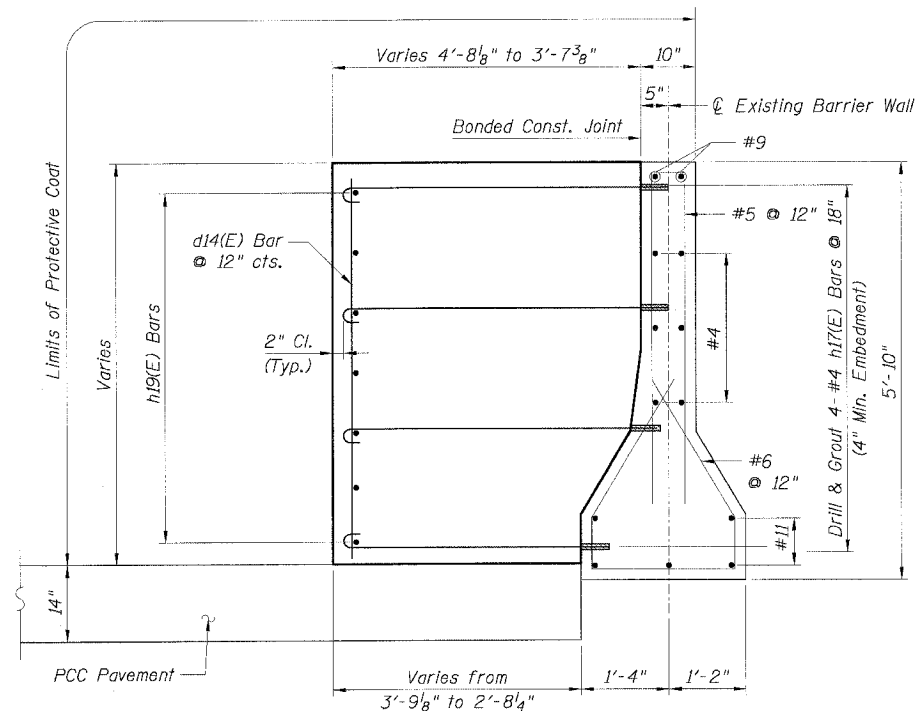
SECTION C-C



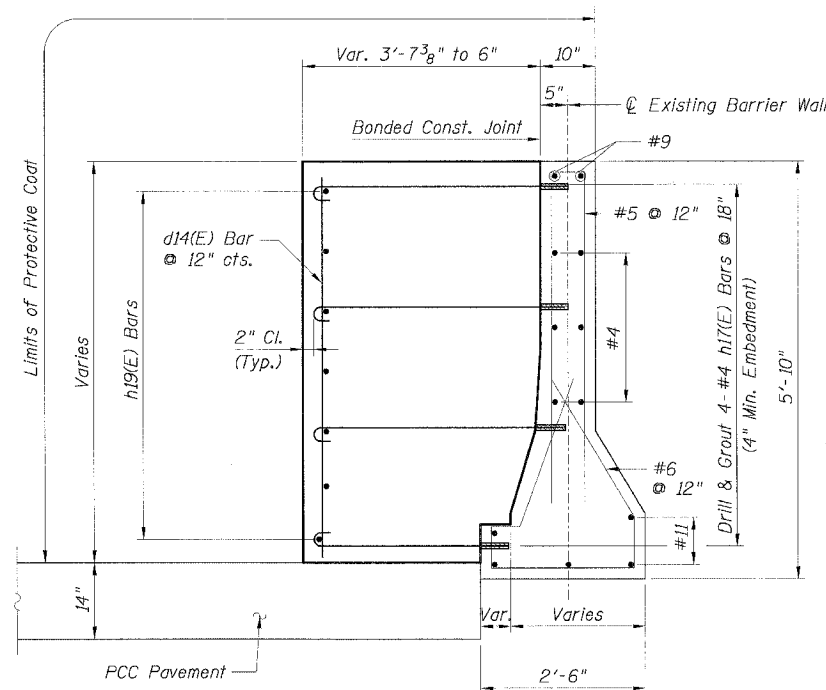
BILL OF MATERIAL

Bar	No.	Size	Length	Shape
d13(E)	17	#4	5'-9"	—
d14(E)	55	#4	5'-9"	—
h15(E)	7	#4	18'-4"	—
h16(E)	36	#4	3'-0"	—
h17(E)	108	#4	5'-4"	—
h18(E)	7	#4	20'-7"	—
h19(E)	14	#4	17'-5"	—

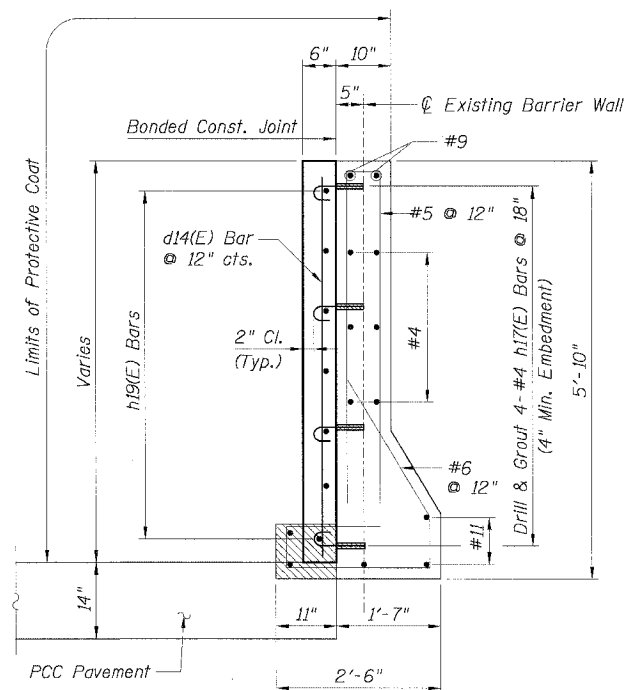
Item	Unit	Quantity
Furnishing Soldier Piles, W12x106	Foot	200
Drilling and Setting		
Soldier Piles (In Soil)	Cu. Ft.	962
Untreated Timber Lagging	Sq. Ft.	188
Concrete Removal	Cu. Yd.	0.2
Reinforcement Bars, Epoxy Coated	Pound	1078
Concrete Superstructure	Cu. Yd.	39.3
Protective Coat	Sq. Yd.	74



SECTION D-D



SECTION E-E



SECTION F-F

REVISIONS	
NAME	DATE
MJP	8-12-05

ILLINOIS DEPARTMENT OF TRANSPORTATION
F.A.I. 90/94 (DAN RYAN EXPRESSWAY)
71ST STREET TO 31ST STREET (SB EXPRESS LANES)
EXISTING BARRIER WALL MODIFICATIONS
AT CTA STATIONS
PROPOSED T/S SHOULDER BELOW EXISTING
REFACED BARRIER TO NEW SIGN STRUCTURE
TRANSITION DETAILS
SCALE: None DRAWN BY: KWT
DATE: July 7, 2005 CHECKED BY: RDP

CTE | AECOM