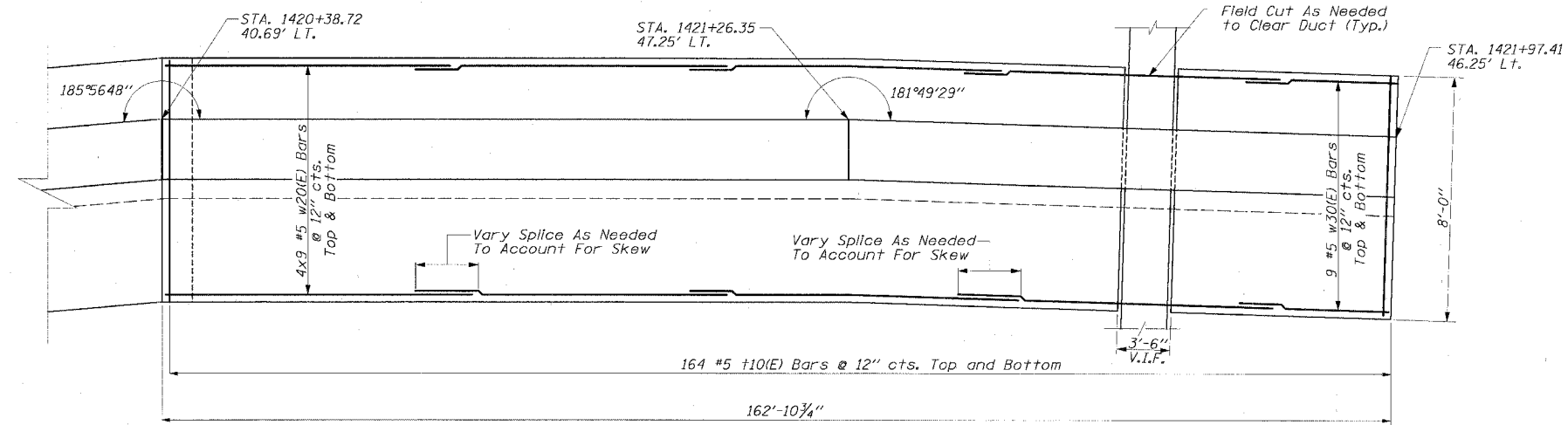
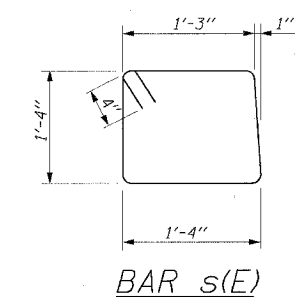
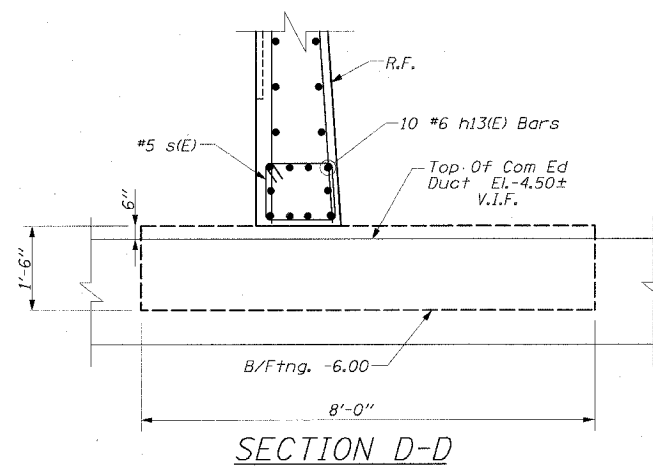
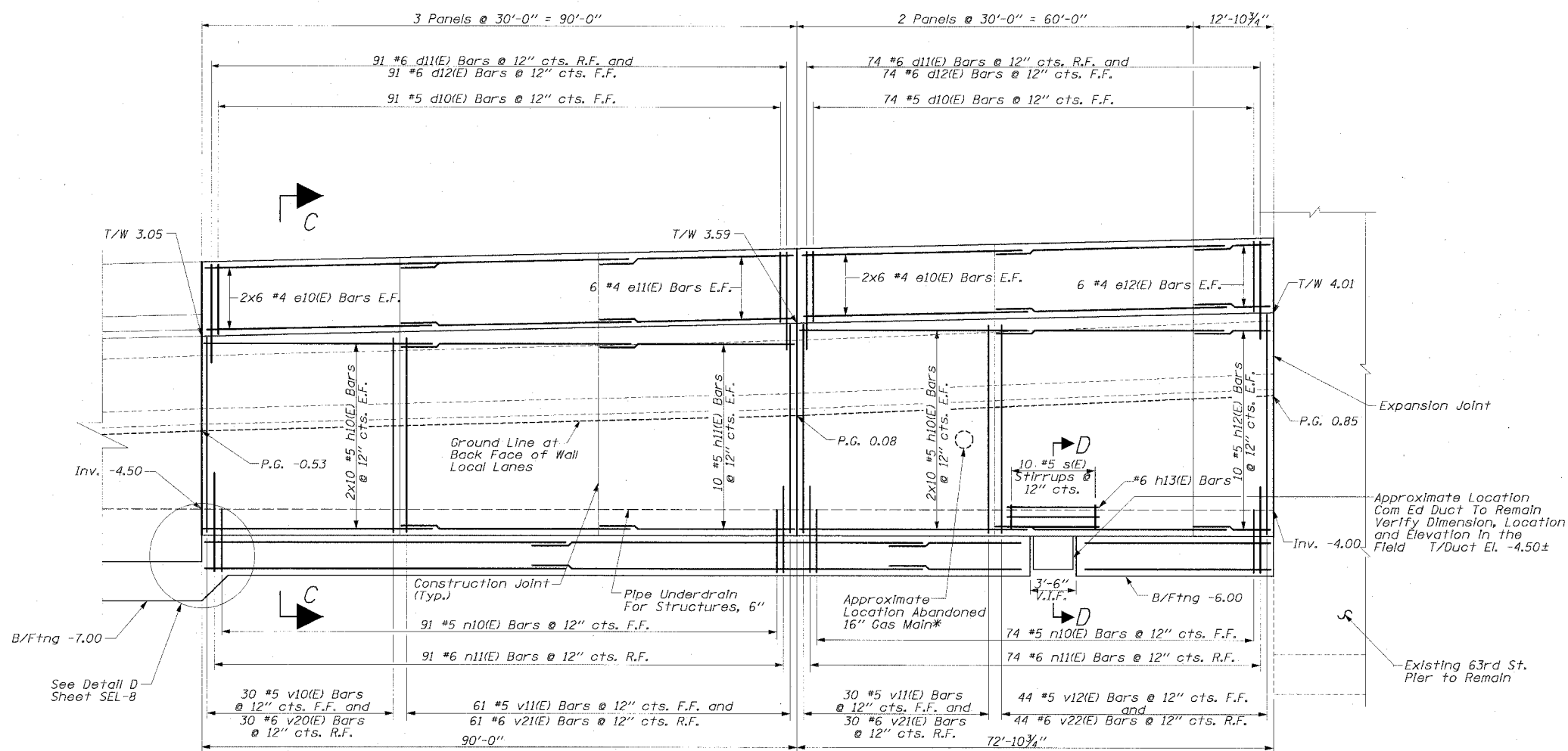


F.A.I. RTE.	SECTION	COUNTY	TOTAL SHEETS	SHEET NO.
94/90		COOK	598	443
STA.	TO STA.			
FED. ROAD DIST. NO.	ILLINOIS	FED. AID PROJECT		
62302	• (1818, ETC, 2324.6-IPR-9			



* To Be Removed As Needed by People's Energy and / or as Directed by the Engineer.

- NOTES:**
- Note that the cost for field cutting and adjusting reinforcement to accommodate blockouts is included with the Pay Item "Reinforcement Bars, Epoxy Coated".
 - Contractor to verify Com Ed Duct and block-out footing as needed. Field cut bars as required to clear blockout.

LEGEND:

B/Ftng = Bottom Of Footing Elev.
T/W = Top Of Wall Elev.
P.G. = Proposed Ground Elev.
SSJ-22 Soil Boring Location

REVISIONS		SEL-9	
NAME	DATE		
		ILLINOIS DEPARTMENT OF TRANSPORTATION	
		F.A.I. 94/90 (DAN RYAN EXPRESSWAY)	
		31ST STREET TO 71ST STREET	
		SB EXPRESS LANE RECONSTRUCTION	
		RETAINING WALL SEL	
		GENERAL PLAN AND ELEVATION	
		SB STA. 1416+88.18 TO STA. 1421+97.41	
		STRUCTURE NO. NONE	
SCALE:			DRAWN BY: ABW
DATE: 07/17/05	20' 40'		CHECKED BY: EL

Edwards AND Kelcey

ONE NORTH FRANKLIN
CHICAGO, IL 60606
PHONE: (312) 251-3000
FAX: (312) 251-3015
WEB: WWW.EKCORP.COM

P:\0-001910-0-35\Corr 14815\CADD\15-Retaining Wall\Plan\SEL-9.dwg 06/24/2005 12:44:42 PM