

STATE OF ILLINOIS  
DEPARTMENT OF TRANSPORTATION

F.A.U. RTE.	SECTION	COUNTY	TOTAL SHEETS	SHEET NO.
3545	2015-090B	DUPAGE	8	1
ILLINOIS CONTRACT NO. 62B96				

D-91-181-16

INDEX OF SHEETS

- 1 COVER SHEET
- 2 STATE HIGHWAY STANDARDS, COMMITMENTS AND GENERAL NOTES
- 3 SUMMARY OF QUANTITIES
- 4 PROPOSED PLAN
- 5 EROSION AND SEDIMENT CONTROL GENERAL NOTES
- 6 EROSION AND SEDIMENT CONTROL PLAN
- 7 TC-10 TRAFFIC CONTROL AND PROTECTION FOR SIDE ROADS, INTERSECTIONS AND DRIVEWAYS
- 8 TC-22 ARTERIAL ROAD INFORMATION SIGN

# PROPOSED HIGHWAY PLANS

FAU ROUTE 3545 - IL 56 (BUTTERFIELD RD.)  
SECTION 2015-090B  
PROJECT : ACM-3545(007)  
CULVERT REHABILITATION  
DUPAGE COUNTY

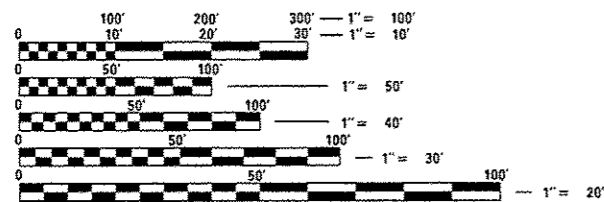
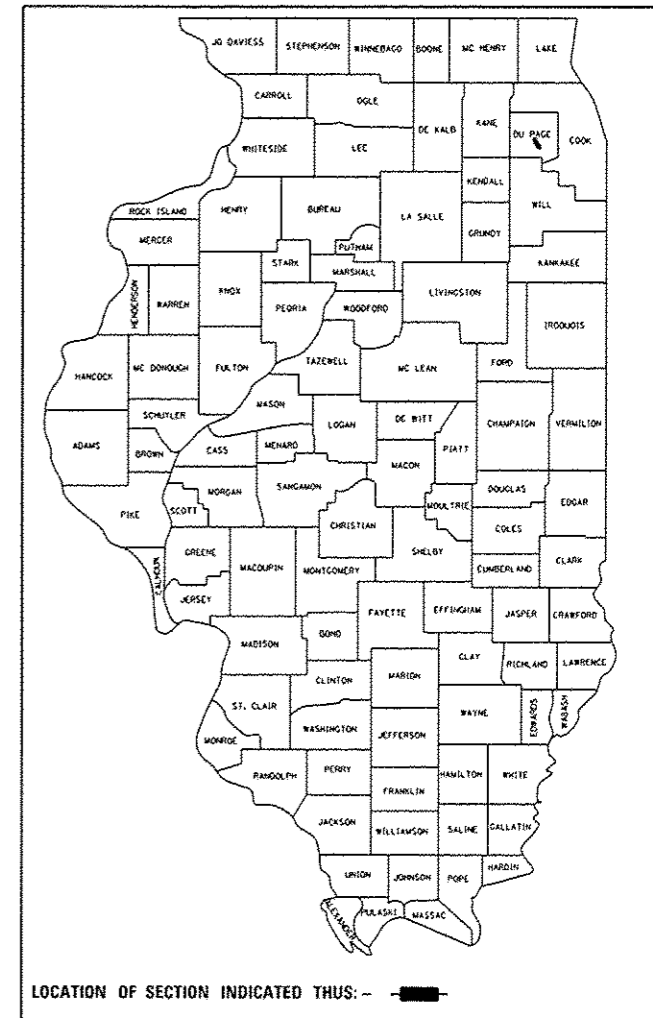
C-91-181-16

IMPROVEMENT IS LOCATED IN  
VILLAGE OF OAK BROOK AND  
VILLAGE OF LOMBARD

TRAFFIC DATA

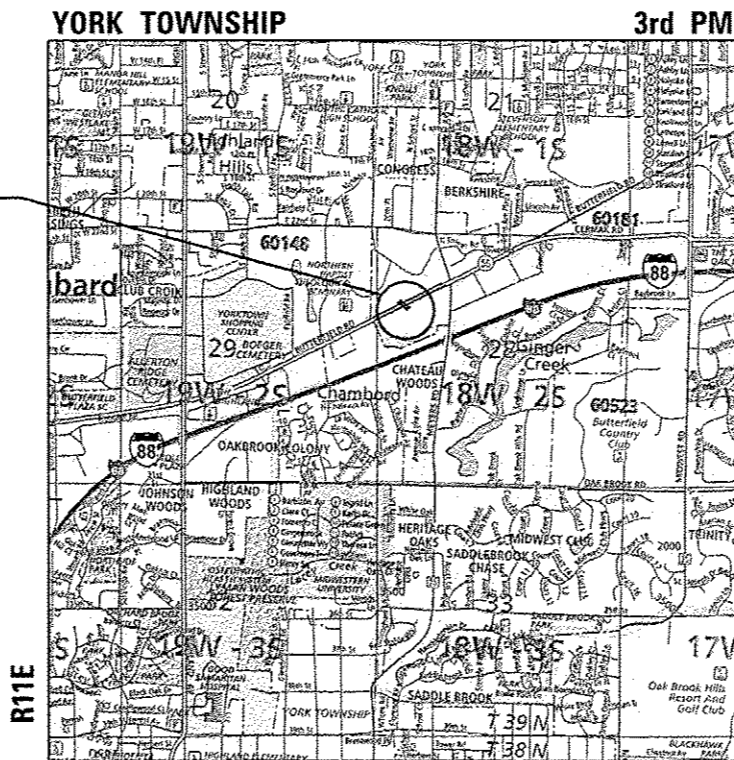
BUTTERFIELD RD. - MINOR ARTERIAL (URBAN)  
2015 ADT = 48,400  
SPEED LIMIT = 45 MPH

IMPROVEMENT LOCATION  
IL 56 (BUTTERFIELD RD.)  
OVER STREAM ( 1 MILE  
EAST OF HIGHLAND AVE.)  
(SN 022-0524)



FULL SIZE PLANS HAVE BEEN PREPARED USING STANDARD ENGINEERING SCALES. REDUCED SIZED PLANS WILL NOT CONFORM TO STANDARD SCALES. IN MAKING MEASUREMENTS ON REDUCED PLANS, THE ABOVE SCALES MAY BE USED.

J.U.L.I.E.  
JOINT UTILITY LOCATION INFORMATION FOR EXCAVATION  
1-800-892-0123  
OR 811



LOCATION MAP NOT TO SCALE T39N  
GROSS LENGTH = 0 FT. = 0.00 MILE  
NET LENGTH = 0 FT. = 0.00 MILE

*Professional Engineer Seal*  
DATE SIGNED: 7/29/16  
EXP. DATE: 11/30/17

STATE OF ILLINOIS  
DEPARTMENT OF TRANSPORTATION  
SUBMITTED August 15, 2016  
[Signature] REGIONAL ENGINEER  
Sept 30, 2016  
[Signature] ENGINEER OF DESIGN AND ENVIRONMENT  
Sept 30, 2016  
[Signature] DIRECTOR OF PROGRAM DEVELOPMENT 2

PROJECT ENGINEER: RAGHAD ADEIS-DAHMAN, P.E. (847) 705-5183  
PROJECT MANAGER: ISSAM RAYYAN, P.E. (847) 705-4178

CONTRACT NO. 62B96

**Accurate** GROUP, INC.  
WWW.ACCGL.COM  
101 SCHELTER RD., SUITE B-200  
LINCOLNSHIRE, ILLINOIS 60069  
T (847) 613-1100 F (847) 613-110  
ILLINOIS PROFESSIONAL DESIGN FIRM NO. 184.0020 3

PRINTED BY THE AUTHORITY  
OF THE STATE OF ILLINOIS

**LIST OF ILLINOIS DOT HIGHWAY STANDARDS**

STANDARD NO.	DESCRIPTION
000001-06	STANDARD SYMBOLS, ABBREVIATIONS AND PATTERNS
001006	DECIMAL OF AN INCH AND OF A FOOT
280001-07	TEMPORARY EROSION CONTROL SYSTEMS
701101-05	OFF-RD OPERATIONS, MULTILANE, 15' (4.5 m) TO 24" (600 mm) FROM PAVEMENT EDGE
701606-10	URBAN SINGLE LANE CLOSURE, MULTILANE, 2W WITH MOUNTABLE MEDIAN
701701-10	URBAN LANE CLOSURE, MULTILANE INTERSECTION
701901-05	TRAFFIC CONTROL DEVICES

**COMMITMENTS**

- THE STREAM DIVERSIONS SHALL BE ACCOMPLISHED BY A STRUCTURAL METHOD. NO LOOSE FILL SHALL BE ALLOWED IN THE CONSTRUCTION OF THE DIVERSIONS.
- ANY CURE OR RINSE WATER CONTAINING STYRENE SHALL BE CAPTURED AND PROPERLY TREATED BEFORE ENTERING ANY WATERS OF THE U.S.

**GENERAL NOTES**

- BEFORE STARTING ANY EXCAVATION, THE CONTRACTOR SHALL CALL "J.U.L.I.E." AT (800) 892-0213 OR FIELD LOCATIONS OF BURIED ELECTRIC, TELEPHONE AND GAS UTILITIES. 48 HOUR NOTIFICATION IS REQUIRED.
- IF THIS CONTRACT REQUIRES THE SERVICES OF AN ELECTRICAL CONTRACTOR, THE CONTRACTOR SHALL BE RESPONSIBLE AT HIS/HER OWN EXPENSE FOR LOCATING EXISTING IDOT ELECTRICAL FACILITIES PRIOR TO PERFORMING ANY WORK. IF THIS CONTRACT DOES NOT REQUIRE THE SERVICES OF AN ELECTRICAL CONTRACTOR, THE CONTRACTOR MAY REQUEST ONE FREE LOCATE FOR EXISTING IDOT ELECTRICAL FACILITIES FROM THE DISTRICT ONE ELECTRICAL MAINTENANCE CONTRACTOR PRIOR TO THE START OF ANY WORK. ADDITIONAL REQUESTS MAY BE THE AT THE EXPENSE OF THE CONTRACTOR. THE LOCATION OF UNDERGROUND TRAFFIC FACILITIES DOES NOT RELIEVE THE CONTRACTOR OF THEIR RESPONSIBILITY TO REPAIR ANY FACILITIES DAMAGED DURING CONSTRUCTION AT THEIR EXPENSE.
- THE CONTRACTOR SHALL COORDINATE CONSTRUCTION ACTIVITIES WITH UTILITY COMPANIES, THE VILLAGE OF OAK BROOK AND THE VILLAGE OF LOMBARD.
- THE CONTRACTOR WILL NOT BE ALLOWED TO SET UP A YARD OR FIELD OFFICE ON STATE PROPERTY WITHOUT WRITTEN PERMISSION FROM THE DEPARTMENT.
- IT SHALL BE THE CONTRACTOR'S RESPONSIBILITY TO VERIFY ALL DIMENSIONS AND CONDITIONS EXISTING IN THE FIELD PRIOR TO ORDERING MATERIALS AND BEGINNING CONSTRUCTION.
- DO NOT SCALE PLANS FOR CONSTRUCTION DIMENSIONS.
- THE CONTRACTOR SHALL CONTACT THE DISTRICT ONE TRAFFIC CONTROL SUPERVISOR AT (847) 705-4470 A MINIMUM OF 72 HOURS IN ADVANCE OF BEGINNING WORK.
- THE CONTRACTOR SHALL BE REQUIRED TO PROVIDE ACCESS TO ABUTTING PROPERTY AT ALL TIMES DURING THE CONSTRUCTION OF THIS PROJECT.
- THE ARTERIAL ROAD INFORMATION SIGN (TC-22) IS APPLICABLE ONLY TO ARTERIAL ROADS AND SHALL NOT BE APPLIED TO EXPRESSWAYS/TOLLWAYS.
- THE CONTRACTOR SHALL TAKE ALL NECESSARY PRECAUTIONS FOR THE PROTECTION OF EXISTING PLANT MATERIAL FOR WHICH THE CONTRACT DOES NOT PROVIDE REMOVAL. THE PROTECTION OF EXISTING PLANT MATERIAL AND THE REPAIR OR REPLACEMENT OF EXISTING PLANT MATERIAL DAMAGED BY THE CONTRACTOR SHALL BE DONE IN ACCORDANCE WITH THE REQUIREMENTS OF SECTION 201 OF THE STANDARD SPECIFICATIONS.
- THE DEPARTMENT HAS NOT OBTAINED ANY PERMITS FOR OFFSITE BORROW, WASTE, USE (BWU) AREAS. PRIOR TO WORKING IN BWU AREAS IF THE CONTRACTOR CHOOSES TO USE ACTIVITIES REQUIRING PERMITS, IT IS THE CONTRACTOR'S RESPONSIBILITY TO SECURE THE PROPER PERMITS. IN ADDITION TO THE BORROW REVIEW (BDE 2289) AND USE/WASTE REVIEW (BDE 2290) SUBMITTALS, THE CONTRACTOR SHALL SUBMIT AN EROSION AND SEDIMENT (ESC) PLAN FOR EVERY BWU SITE TO THE DEPARTMENT FOR ACCEPTANCE. GUIDELINES FOR ACCEPTABLE BWU PRACTICES CAN BE FOUND IN SECTION II.G.1 AND 2 OF THE SWPPP. THE COST OF ALL MATERIALS AND LABOR NECESSARY TO COMPLY WITH THE ABOVE PROVISIONS TO PREPARE AND IMPLEMENT ESC PLANS WILL NOT BE PAID FOR SEPARATELY, BUT SHALL BE CONSIDERED AS INCLUDED IN THE UNIT BID PRICES OF THE CONTRACT AND NO ADDITIONAL COMPENSATION WILL BE ALLOWED.
- THIS PROJECT DOES NOT REQUIRE A US ARMY CORPS OF ENGINEERS (USACE) 404 PERMIT BECAUSE OF THE COMMITMENTS SHOWN ON THIS SHEET.
- ALL DAMAGE TO EXISTING PAVEMENT MARKINGS OR RAISED REFLECTIVE PAVEMENT MARKERS SHOWN ON THE PLANS SHALL BE REPLACED AT NO ADDITIONAL COST TO THE DEPARTMENT.

FILE NAME = G:\Engineering\proj\user\p\proj\12015 IDOT DURS\12015 IDOT DURS\CAD\CADD Sheets\Civil\12162896-ahb-Dennoea.dgn



USER NAME = Miller	DESIGNED - TGM	REVISED -
PLOT SCALE = 2.0000' / 1" =	DRAWN - PP	REVISED -
PLOT DATE = 9/8/2016	CHECKED - JMT	REVISED -
	DATE - 08-03-2016	REVISED -

STATE OF ILLINOIS  
DEPARTMENT OF TRANSPORTATION

STATE HIGHWAY STANDARDS, COMMITMENTS AND GENERAL NOTES  
IL 56 (BUTTERFIELD RD.)

F.A.U. RTE.	SECTION	COUNTY	TOTAL SHEETS	SHEET NO.
3545	2015-090B		8	2
SCALE:			DUPAGE	CONTRACT NO. 62B96
SHEET OF SHEETS			ILLINOIS FED. AID PROJECT	

CODE NO.	ITEM	UNIT	TOTAL QUANTITY	URBAN CONSTR. CODE	
				80% FEDERAL 20% STATE ROADWAY -0004 022-0524	
20200100	EARTH EXCAVATION	CU YD	8	8	
21101615	TOPSOIL FURNISH AND PLACE, 4"	SO YD	1210	1210	
25000210	SEEDING, CLASS 2A	ACRE	0.25	0.25	
25000400	NITROGEN FERTILIZER NUTRIENT	POUND	23	23	
25000500	PHOSPHORUS FERTILIZER NUTRIENT	POUND	23	23	
25000600	POTASSIUM FERTILIZER NUTRIENT	POUND	23	23	
25100630	EROSION CONTROL BLANKET	SO YD	1210	1210	
28000250	TEMPORARY EROSION CONTROL SEEDING	POUND	25	25	
28000315	AGGREGATE DITCH CHECKS	TON	25	25	
28000400	PERIMETER EROSION BARRIER	FOOT	440	440	
28001100	TEMPORARY EROSION CONTROL BLANKET	SO YD	1210	1210	
<del>28100711</del>	<del>STONE DUMPED RIPRAP, CLASS AG</del>	<del>SO YD</del>	<del>12</del>	<del>12</del>	
59000200	EPOXY CRACK INJECTION	FOOT	36	36	
* 66900200	NON-SPECIAL WASTE DISPOSAL	CU YD	10	10	
67000400	ENGINEER'S FIELD OFFICE, TYPE A	CAL MO	3	3	
14 * 66900450	SPECIAL WASTE PLANS AND REPORTS	L SUM	1	1	

\* SPECIALTY ITEM

CODE NO.	ITEM	UNIT	TOTAL QUANTITY	URBAN CONSTR. CODE	
				80% FEDERAL 20% STATE ROADWAY -0004 022-0524	
* 66900530	SOIL DISPOSAL ANALYSIS	EACH	1	1	
67100100	MOBILIZATION	LSUM	1	1	
70102625	TRAFFIC CONTROL AND PROTECTION, STANDARD 701606	LSUM	1	1	
70102635	TRAFFIC CONTROL AND PROTECTION, STANDARD 701701	LSUM	1	1	
X5430100	INSERTION CULVERT LINER (SPECIAL)	FOOT	303	303	
Z0012752	CONCRETE STRUCTURE REPAIR	CU FT	1	1	
Z0030850	TEMPORARY INFORMATION SIGNING	SO FT	51.4	51.4	

6

\* SPECIALTY ITEM



USER NAME *USER*	DESIGNED - PP	REVISED -
PLOT SCALE *SCALE*	DRAWN - JN	REVISED -
PLOT DATE *DATE*	CHECKED - TOM	REVISED -
	DATE - 08-03-2016	REVISED -

STATE OF ILLINOIS  
DEPARTMENT OF TRANSPORTATION

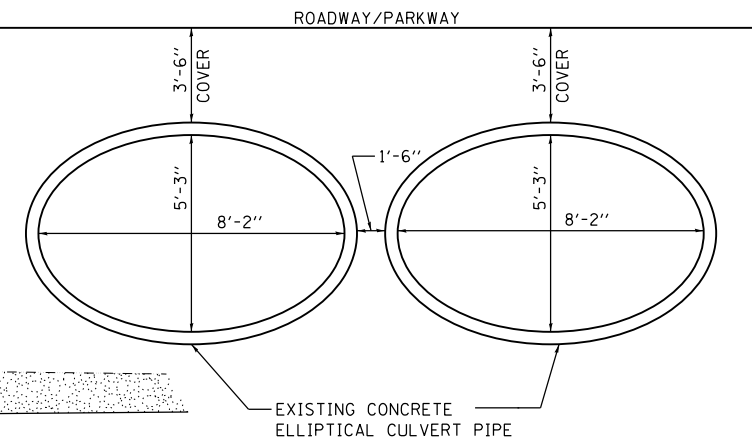
SUMMARY OF QUANTITIES  
IL 56 (BUTTERFIELD RD.)

SCALE: SHEET OF SHEETS STA. TO STA.

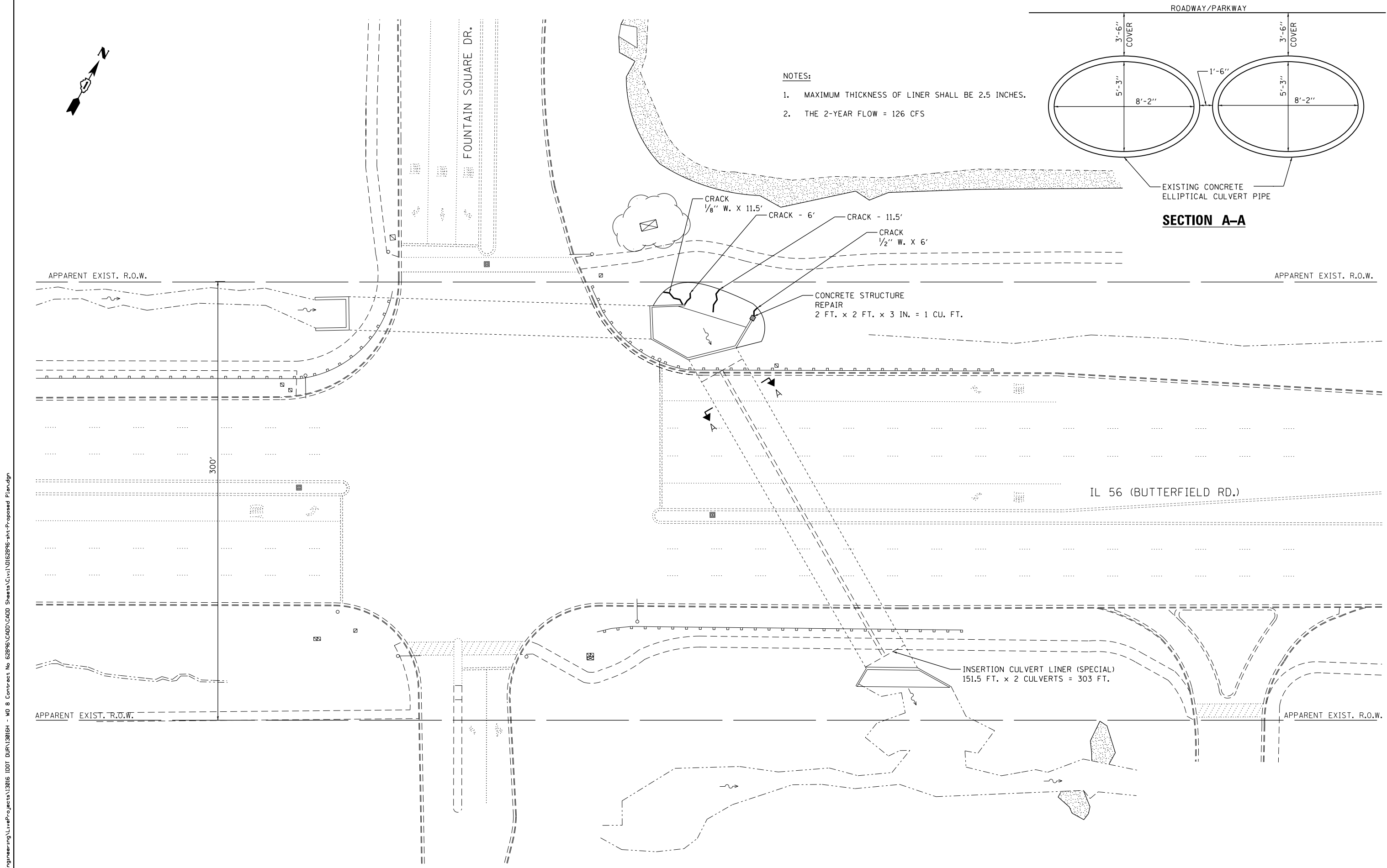
F.A.U. RTE.	SECTION	COUNTY	TOTAL SHEETS	SHEET NO.
3545	2015-090B		8	3
CONTRACT NO. 62B96			ILLINOIS FED. AID PROJECT	



- NOTES:**
1. MAXIMUM THICKNESS OF LINER SHALL BE 2.5 INCHES.
  2. THE 2-YEAR FLOW = 126 CFS



**SECTION A-A**



FILE NAME = Q:\Engineering\LiveProjects\13016 IDOT DURN\3016H - WD 8 Contract No 62B96\CADD\CADD Sheets\Civil\0162B96-sht-Proposed Plan.dgn



USER NAME = TMiller	DESIGNED - TGM	REVISED -
DRAWN - PP	REVISOR -	REVISED -
PLOT SCALE = 40.0000' / in.	CHECKED - JMT	REVISED -
PLOT DATE = 9/8/2016	DATE - 08-03-2016	REVISED -

**STATE OF ILLINOIS  
DEPARTMENT OF TRANSPORTATION**

**PROPOSED PLAN  
IL 56 (BUTTERFIELD RD.)**

SCALE: SHEET OF SHEETS STA. TO STA.

F.A.U. RTE.	SECTION	COUNTY	TOTAL SHEETS	SHEET NO.
3545	2015-090B	DUPAGE	8	4
CONTRACT NO. 62B96				
ILLINOIS FED. AID PROJECT				

**EROSION AND SEDIMENT CONTROL NOTES:**

- ALL CONTROL MEASURES NECESSARY MUST MEET THE MINIMUM REQUIREMENTS AS DESCRIBED IN THE LATEST EROSION AND SEDIMENT CONTROL FIELD GUIDE FOR CONSTRUCTION INSPECTION BY THE ILLINOIS DEPARTMENT OF TRANSPORTATION. ADDITIONAL DETAILS AND BMPs ARE ALSO AVAILABLE AND CAN BE UTILIZED AS SHOWN IN THE ILLINOIS URBAN MANUAL, REVISED TO LATEST VERSION AS AMENDED. ALL ESC MEASURES WILL BE MAINTAINED IN ACCORDANCE WITH THE IDOT EROSION AND SEDIMENT CONTROL FIELD GUIDE FOR CONSTRUCTION INSPECTION AND IDOT'S BEST MANAGEMENT PRACTICES - MAINTENANCE GUIDE: (HTTP://WWW.IDOT.ILLINOIS.GOV/TRANSPORTATION-SYSTEM/ENVIRONMENT/EROSION-AND-SEDIMENT-CONTROL).
- ALL THE SOIL EROSION AND SEDIMENT CONTROL FEATURES MUST BE CONSTRUCTED PRIOR TO THE COMMENCEMENT OF UPLAND DISTURBANCE. SOIL DISTURBANCE MUST BE PHASED OR ENACTED IN SUCH A MANNER AS TO MINIMIZE EROSION. SOIL STABILIZATION MEASURES MUST CONSIDER THE TIME OF YEAR, SITE CONDITIONS AND THE USE OF TEMPORARY AND/OR PERMANENT MEASURES.
- IT IS THE RESPONSIBILITY OF THE CONTRACTOR TO ENSURE THAT SEDIMENT TRANSPORT OFF THE SITE IS REDUCED BY A COMBINATION OF MINIMIZATION OF EROSION AT THE SOURCE AND THE INSTALLATION OF SPECIFIC MEASURES TO CONTROL OR REDUCE THE TRANSPORT OF SEDIMENT. A COPY OF THE EROSION AND SEDIMENT CONTROL SCHEDULE BEING IMPLEMENTED BY THE CONTRACTOR MUST BE APPROVED BY THE ENGINEER, WILL BE ON THE CONSTRUCTION SITE AT ALL TIMES.
- ALL RUNOFF ORIGINATING ON DISTURBED AREAS ASSOCIATED WITH THIS PROJECT WILL PASS THROUGH ONE OR MORE MEASURES THAT WILL MINIMIZE THE OFF-SITE SEDIMENT IMPACTS OF THE CONSTRUCTION ACTIVITIES.
- DISTURBED AREAS ARE TO BE PROTECTED FROM EROSION IN A TIMELY MANNER. UPON COMPLETION OF GRADING OR CONSTRUCTION ACTIVITY, THE AREA WILL BE STABILIZED (USING PERMANENT MEASURES WHEN POSSIBLE) WITHIN ONE (1) CALENDAR DAY.
- THE CONTRACTOR MUST CLEAN UP, GRADE THE WORK AREA AS THE PROJECT PROGRESSES AND INSTALL EROSION PROTECTION TO ELIMINATE THE CONCENTRATION OF RUNOFF, OR MUST INSTALL APPROPRIATE SEDIMENT CONTROL DEVICES TO TRAP SEDIMENT. PAVEMENT MUST BE CLEANED DAILY OR AS NECESSARY TO REMOVE EARTHEN MATERIAL TO THE SATISFACTION OF THE ENGINEER OR AUTHORIZED IDOT PERSONNEL.
- STABILIZATION OF CUT OR FILL SLOPES WITH TEMPORARY OR PERMANENT EROSION CONTROL MEASURES IS REQUIRED WHENEVER THE CUT OR FILL ACTIVITY REACHES 10-FT VERTICALLY OR THE FINISHED SLOPE EQUALS 30-FT, WHICHEVER IS MORE RESTRICTIVE. ONCE THE STABILIZATION MEASURES ARE INSTALLED, THE PLACEMENT OF FILL EXCAVATION ACTIVITIES ARE ALLOWED TO PROCEED.
- THE CONTRACTOR WILL ASSUME RESPONSIBILITY FOR MAINTENANCE OF ALL SOIL EROSION CONTROL DURING CONSTRUCTION. THE CONTRACTOR SHALL DESIGNATE ONE OF HIS EMPLOYEES TO BE RESPONSIBLE FOR IMPLEMENTATION OF THE EROSION AND SEDIMENT CONTROL PLAN ON ALL DISTURBED AREAS THROUGHOUT THE PROJECT.
- THE CONTRACTOR'S REPRESENTATIVE HAS TO BE KNOWLEDGEABLE ABOUT INSTALLATION AND MAINTENANCE OF THE REQUIRED MEASURES AND HAVE TAKEN AN ILLINOIS DEPARTMENT OF TRANSPORTATION OR APPROVED EQUAL EROSION AND SEDIMENT CONTROL COURSE. THIS PERSON SHALL HAVE THE AUTHORITY TO CARRY OUT THE IMPLEMENTATION OF ANY INSTRUCTION CONCERNING THE EROSION AND SEDIMENT CONTROL PLAN PROVIDED BY THE ENGINEER. THIS INDIVIDUAL AND THE ENGINEER MUST MAKE INSPECTIONS A MINIMUM OF ONCE EVERY SEVEN DAYS OF THE FOLLOWING:
  - DISTURBED AREAS OF THE PROJECT SITE THAT HAVE NOT BEEN FULLY STABILIZED.
  - STRUCTURAL CONTROL MEASURES (SUCH AS PERIMETER EROSION BARRIER, ETC.)
  - LOCATIONS WHERE VEHICLES ENTER OR EXIT THE PROJECT SITE.
  - AN ADDITIONAL INSPECTION OF THE ITEMS LISTED ABOVE MUST BE MADE 24-HOURS AFTER A RAINFALL OR EQUIVALENT SNOWFALL EVENT GREATER THAN 0.5-INCH. DURING WINTER MONTHS, ALL MEASURES MUST BE CHECKED BY THE CONTRACTOR AFTER EACH SIGNIFICANT SNOWMELT.
- ALL THE EROSION AND SEDIMENT CONTROL MEASURES SHALL BE MAINTAINED DURING THE CONSTRUCTION SEASON, AS WELL AS OVER THE WINTER SHUTDOWN PERIOD AND OTHER DAYS WHEN THE PROJECT IS CLOSED DOWN FOR A LONGER DURATION. ANY CONTROL MEASURES FILLED MORE THAN 75% MUST BE CLEANED AND RESET AND THESE SPOILS REMOVED TO AN APPROVED SITE.
- SALVAGED TOPSOIL SHALL BE PLACED ON WELL DRAINED LAND AWAY FROM INTERMITTENT AND ACTIVE DRAINAGE PATHS WITH THE APPROPRIATE RUNOFF CONTROL AND SEDIMENT CONTROL MEASURES INSTALLED AROUND THE STORAGE SITE.

- IMMEDIATELY AFTER THE FINAL SHAPING OF THE STOCKPILE, THE TOPSOIL WILL BE STABILIZED IN ACCORDANCE WITH THE METHOD APPROVED BY IDOT. THE CONTRACTOR WILL PROVIDE ADEQUATE QUANTITY OF SILT FENCE TO CONTROL THE PERIMETER OF THE STOCKPILE.
- EXCAVATION TO BE USED FOR EMBANKMENTS SHALL NOT BE STOCKPILED UNLESS PERIMETER CONTROLS ARE UTILIZED. WHEN THIS MATERIAL IS STOCKPILED FOR THE CONVENIENCE OF THE CONTRACTOR, THE COST OF THE CONTROLS WILL BE BORNE BY THE CONTRACTOR. IF THE MATERIAL IS STOCKPILED AT THE DIRECTION OF THE ENGINEER, THE DEPARTMENT WILL ASSUME THE COST OF INSTALLING AND MAINTAINING THE CONTROLS.
  - IF AND/OR WHEN THE CONTRACTOR REQUESTS CHANGE TO POSTPONE COMPLETION OF THE EXCAVATION OF A SPECIFIC AREA AS A CONTINUOUS OPERATION AND PLACING THE TOPSOIL AS DEFINED IN THE STANDARD SPECIFICATIONS, THE ENGINEER MAY ALLOW THE CONTRACTOR TO STABILIZE THE AREA USING TEMPORARY STABILIZATION WITH STRAW MULCH 25 FEET AWAY FROM THE SHOULDER OF THE ROAD PROVIDED THE FOLLOWING CONDITIONS ARE MET:
    - ALL AREAS BEING STABILIZED ARE 1:3 SLOPES OR FLATTER
    - THE CONTRACTOR BEARS THE COST OF PREPARING THE SEED BED AND STABILIZING THE AREA WITH TEMPORARY STABILIZATION WITH MULCH, METHOD 2.
    - ALL REQUIRED SEDIMENT CONTROL MEASURES FOR THE SECTION OF ROAD IN QUESTION HAVE BEEN INSTALLED AND ARE BEING MAINTAINED.
  - TOPSOIL PLACEMENT: TOPSOIL WILL BE PLACED ON FINAL SLOPES WHICH WILL NOT BE DISTURBED BY FUTURE CONSTRUCTION. TOPSOIL WILL NOT BE PLACED ON SURFACES WHICH WILL BE PAVED IN THE FUTURE NOR ON TEMPORARY STEEP SLOPES.
  - IN AREAS WHERE A PERMANENT VEGETATIVE COVER IS PRACTICABLE AND INCLUDED IN THE CONTRACT DOCUMENTS, A SPECIAL EFFORT SHOULD BE MADE TO ESTABLISH A COVER AS SOON AS A DISTURBED AREA IS BROUGHT TO FINAL GRADE. UNDER NO CIRCUMSTANCES SHALL THE CONTRACTOR PROLONG FINAL GRADING AND SHAPING SO THAT THE ENTIRE PROJECT CAN BE PERMANENTLY SEEDED AT ONE TIME.
  - THE CONTRACTOR'S REPRESENTATIVE AND THE ENGINEER MUST KEEP A WRITTEN REPORT SUMMARIZING THE REQUIRED INSPECTIONS. THE REPORTS MUST BE KEPT AT THE SITE DURING CONSTRUCTION. THE REPORT MUST ALSO BE RETAINED FOR THREE YEARS FROM THE DATE THE SITE IS FINALLY STABILIZED.
  - ANY SEDIMENT LADEN DEWATERING DISCHARGE MUST BE DIRECTED TO AN APPROVED SEDIMENT TRAPPING CONTROL MEASURE PRIOR TO RELEASE FROM THE PROJECT SITE.
  - NO WORK IS ALLOWED BEYOND THE PERMITTED AREA. ANY WORK WITHIN A CREEK, SWALE OR DITCH CAPABLE OF CONVEYING WATER MUST BE CONDUCTED IN THE DRY. PROVISIONS MUST BE MADE TO BYPASS PUMP OR DEWATER ANY AREAS IN WHICH WORK WILL BE CONDUCTED. IN HIGH FLOW CHANNELS WHERE DEWATERING IS NOT POSSIBLE OR PRACTICAL, SILT FENCE OR SEDIMENT CURTAINS MAY BE INSTALLED PARALLEL TO THE STREAM BANK. IN NO CASE WILL THE CURTAINS BE INSTALLED PERPENDICULAR TO THE FLOW. DEWATERING MUST BE DISCHARGED TO A STABLE, NON-ERODIBLE SURFACE AND IN-STREAM WORK BARRIERS MUST BE COMPOSED OF NON-ERODIBLE MATERIAL.
  - SEEDING USAGE  
  
CLASS 2A:  
USED ON FINAL DISTURBED CONSTRUCTION AREAS INDICATED ON THE PLANS.  
  
TEMPORARY EROSION CONTROL SEEDING:  
USED IN AREAS REQUIRING SHORT TERM TEMPORARY SEEDING DURING CONSTRUCTION.
  - THE CONTRACTOR MUST COOPERATE WITH THE ENGINEER AND HIS/HER REPRESENTATIVE WHO WILL MAKE SITE VISITS TO REVIEW THE COMPLIANCE OF THE PLANS IN THE FIELD AND AUDIT IF NECESSARY. THE CONTRACTOR MUST PREPARE THE LOGS AND RECORDS WHEN REQUIRED AND SUBMIT TO IDOT AND/OR APPROPRIATE AGENCIES.
  - THE INSTALLATION, MAINTENANCE, REMOVAL AND RESTORATION OF THE AREA DISTURBED BY THE PLACEMENT OF THE PERIMETER EROSION BARRIER ARE INCLUDED IN THE CONTRACT UNIT PRICE FOR PERIMETER EROSION BARRIER. AFTER ALL PERIMETER EROSION BARRIER IS REMOVED, THE AREAS DAMAGED BY THE PERIMETER EROSION CONTROL BARRIER MUST BE RESTORED TO THEIR ORIGINAL CONDITION.
  - STABILIZATION MEASURES SHALL BE INITIATED IMMEDIATELY WHERE CONSTRUCTION ACTIVITIES HAVE TEMPORARILY OR PERMANENTLY CEASED, BUT IN NO CASE MORE THAN ONE (1) DAY AFTER THE CONSTRUCTION ACTIVITY IN THAT PORTION OF THE SITE HAS TEMPORARILY OR PERMANENTLY CEASED ON ALL DISTURBED PORTIONS OF THE SITE WHERE CONSTRUCTION WILL NOT OCCUR FOR A PERIOD OF FOURTEEN (14) OR MORE CALENDER DAYS.

- TEMPORARY OR PERMANENT STABILIZATION SHALL BE INITIATED IMMEDIATELY UPON COMPLETION OF DISTURBANCE OR IF THE WORK AREA IS TO BE LEFT UNDISTURBED FOR 14 DAYS OR MORE.
- EROSION CONTROL ITEMS ARE CONSIDERED TO BE A HIGH PRIORITY ON THIS CONTRACT. THE CONTRACTOR IS RESPONSIBLE FOR INSTALLATION OF ANY ADDITIONAL EROSION CONTROL MEASURES NECESSARY TO PREVENT EROSION AND SEDIMENTATION AS DETERMINED BY THE ENGINEER.
- THE CONTRACTOR IS REQUIRED TO PROVIDE WASHOUT FACILITIES TO COMPLY WITH EROSION CONTROL PERMITS.

**SOIL PROTECTION SCHEDULE:**

STABILIZATION TYPE	JAN.	FEB.	MAR.	APR.	MAY	JUN.	JUL.	AUG.	SEP.	OCT.	NOV.	DEC.
PERMANENT SEEDING						→					→	
DORMANT SEEDING	→		→							→		→
TEMPORARY SEEDING										→		
EROSION BLANKET / HYDROMULCH											→	

**EROSION AND SEDIMENT CONTROL STRATEGY:**

- ERECT PERIMETER EROSION BARRIERS AND AGGREGATE DITCH CHECKS AS SHOWN ON THE PLANS.
- INSPECT AND MAINTAIN ALL EROSION AND SEDIMENT CONTROL MEASURES FOR THE DURATION OF CONSTRUCTION.
- STABILIZE DISTURBED AREAS WITH TEMPORARY EROSION CONTROL MEASURES. USE THE PERMANENT SEEDING WITH EROSION CONTROL BLANKET OR TURF REINFORCEMENT MAT FOR PERMANENT STABILIZATION AS SHOWN ON THE PLANS.
- WHEN THE PERMANENT STABILIZATION IS ESTABLISHED, COMPLETELY REMOVE ALL REMAINING TEMPORARY EROSION CONTROL MEASURES, INCLUDING THE AGGREGATE DITCH CHECKS.

**HIGHWAY STANDARDS:**

STD. NO.	TITLE
280001	TEMPORARY EROSION CONTROL SYSTEMS

**STATE OF ILLINOIS  
DEPARTMENT OF TRANSPORTATION**

**EROSION AND SEDIMENT CONTROL GENERAL NOTES  
IL 56 (BUTTERFIELD RD.)**

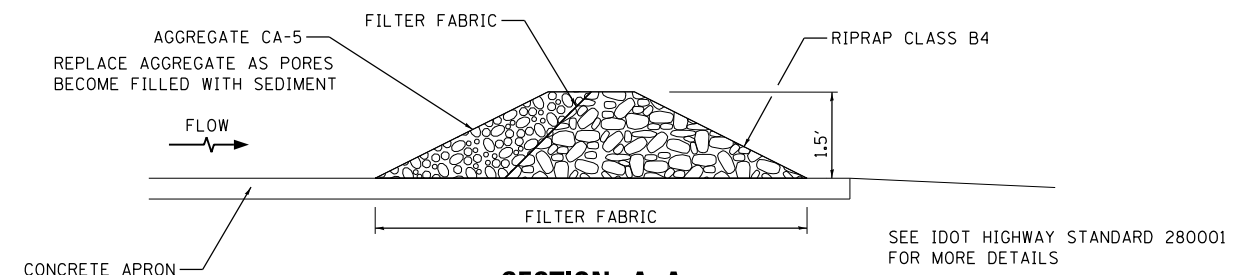
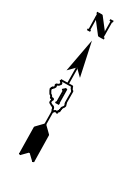
SCALE: SHEET OF SHEETS STA. TO STA.

F.A.U. RTE.	SECTION	COUNTY	TOTAL SHEETS	SHEET NO.
3545	2015-090B	DUPAGE	8	5
<b>CONTRACT NO. 62B96</b>				
ILLINOIS FED. AID PROJECT				

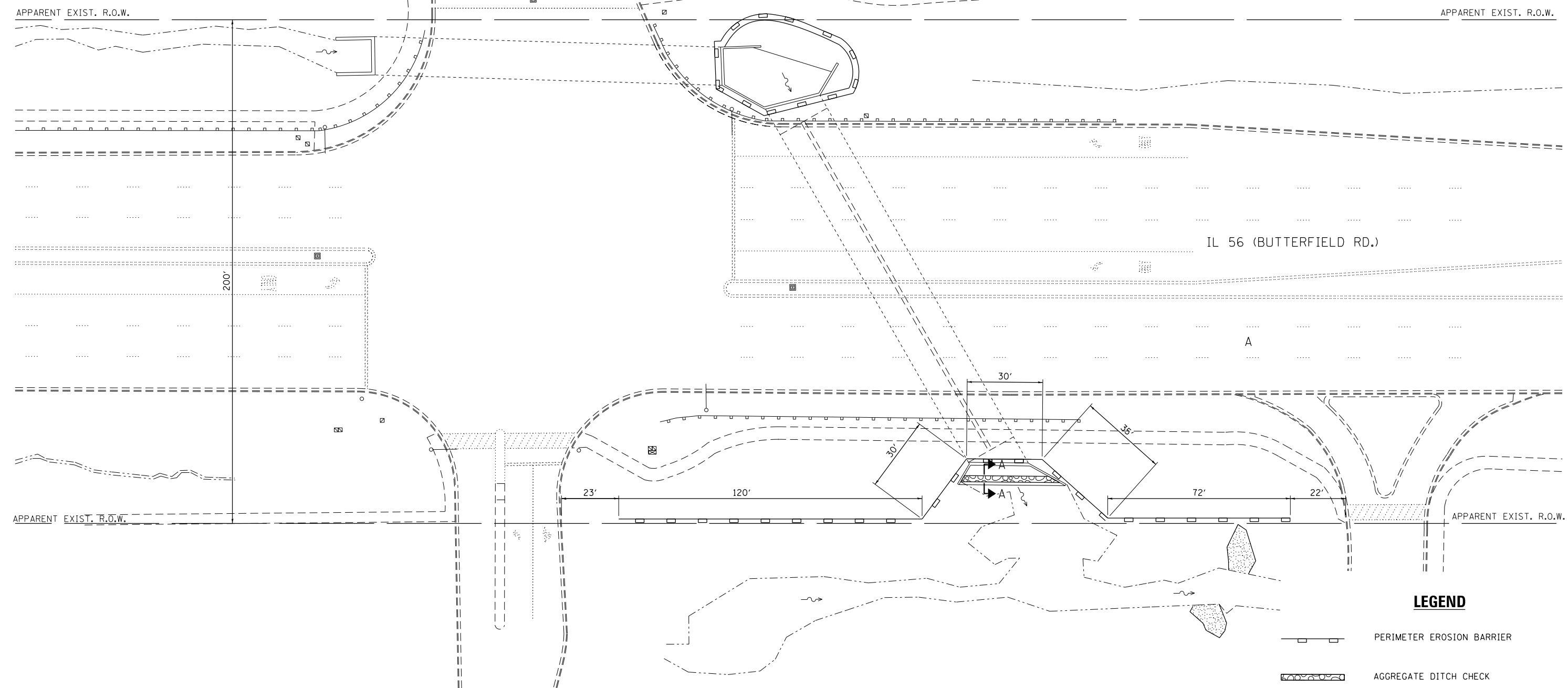
FILE NAME = G:\Engineering\Live\Projects\13016 IDOT DURN\3016H - WD 8 Contract No 62B96\CADD\CADD Sheets\Civil\0162B96-sht-Er-note-COPY.dgn



USER NAME = TMiller	DESIGNED - PP	REVISED -
	DRAWN - PP	REVISED -
PLOT SCALE = 20.0000' / in.	CHECKED - TGM	REVISED -
PLOT DATE = 9/8/2016	DATE - 08-03-2016	REVISED -



**SECTION A-A**  
 AGGREGATE DITCH CHECK ON CONCRETE APRON  
 REMOVE IN ENTIRETY AT COMPLETION OF PROJECT



**LEGEND**

- PERIMETER EROSION BARRIER
- AGGREGATE DITCH CHECK

FILE NAME = G:\Engineering\LiveProjects\13016 IDOT DURN\3016H - WD 8 Contract No 62B96\CADD\CADD Sheets\Civil\0162B96-sht-ErosionPlan.dgn



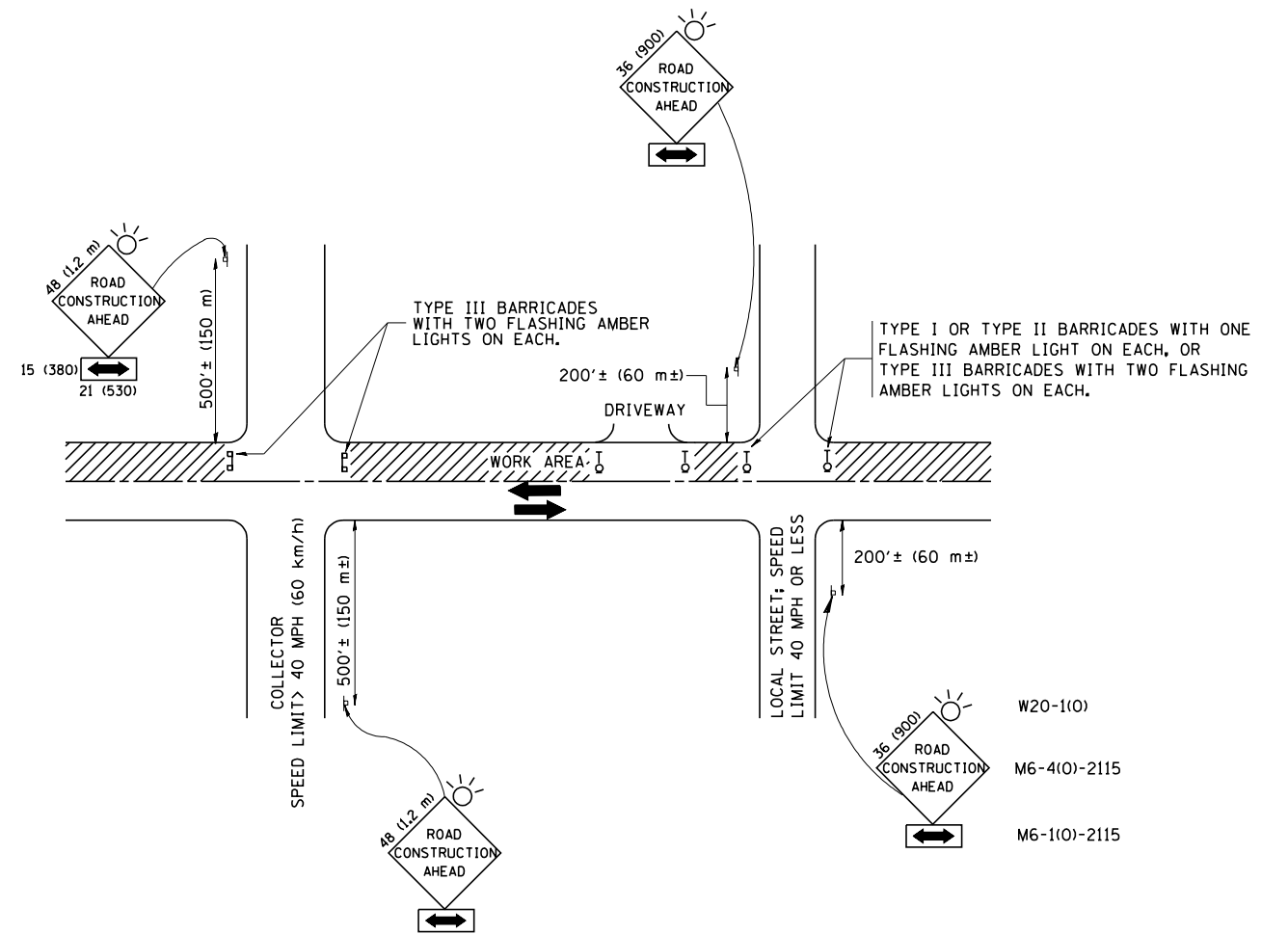
USER NAME = TMiller	DESIGNED - TGM	REVISED -
DRAWN - TGM	REVISIONS -	
PLOT SCALE = 40.0000' / in.	CHECKED - JMT	REVISED -
PLOT DATE = 9/8/2016	DATE - 08-03-2016	REVISED -

**STATE OF ILLINOIS  
 DEPARTMENT OF TRANSPORTATION**

**EROSION AND SEDIMENT CONTROL PLAN  
 IL 56 (BUTTERFIELD RD.)**

SCALE: SHEET OF SHEETS STA. TO STA.

F.A.U. RTE.	SECTION	COUNTY	TOTAL SHEETS	SHEET NO.
3545	2015-090B	DUPAGE	8	6
CONTRACT NO. 62B96				
ILLINOIS FED. AID PROJECT				



TRAFFIC CONTROL AND PROTECTION FOR SIDE ROADS, INTERSECTIONS, AND DRIVEWAYS

NOTES:

- A. FOR NO LANE RESTRICTION ON THE SIDE ROAD OR DRIVEWAYS
- SIDE ROAD WITH A SPEED LIMIT OF 40 MPH (60 km/h) OR LESS AS SHOWN ON THE DRAWING AND AS DIRECTED BY THE ENGINEER:
    - ONE **ROAD CONSTRUCTION AHEAD** SIGN 36 x 36 (900x900) WITH A FLASHER AND FLAG MOUNTED ON IT APPROXIMATELY 200' (60 m) IN ADVANCE OF THE MAIN ROUTE.
    - THE CLOSED PORTION OF THE MAIN ROUTE SHALL BE PROTECTED BY BLOCKING WITH TYPE I, TYPE II OR TYPE III BARRICADES, 1/3 OF THE CROSS SECTION OF THE CLOSED PORTION.
  - SIDE ROAD WITH A SPEED LIMIT GREATER THAN 40 MPH (60 km/h) AS SHOWN ON THE DRAWING AND AS DIRECTED BY THE ENGINEER:
    - ONE **ROAD CONSTRUCTION AHEAD** SIGN 48 x 48 (1.2 m x 1.2 m) WITH A FLASHER MOUNTED ON IT APPROXIMATELY 500' (150 m) IN ADVANCE OF THE MAIN ROUTE.
    - THE CLOSED PORTION OF THE MAIN ROUTE SHALL BE PROTECTED BY BLOCKING WITH TYPE III BARRICADES, 1/2 OF THE CROSS SECTION OF THE CLOSED PORTION.
3. WHEN THE SIDE ROAD LIES BETWEEN THE BEGINNING OF THE MAINLINE SIGNING AND THE WORK ZONE, A SINGLE HEADED ARROW (M6-1) SHALL BE USED IN LIEU OF THE DOUBLE HEADED ARROW (M6-4).
- B. FOR A LANE CLOSURE ON A SIDE ROAD OR DRIVEWAY:
- USE APPLICABLE PORTIONS OF THE TYPICAL APPLICATION OF TRAFFIC CONTROL DEVICES (STD. 701501, STD. 701606 OR THE APPROPRIATE STANDARD). THE SPACING OF SIGNS AND BARRICADES SHALL BE ADJUSTED FOR FIELD CONDITIONS AS DIRECTED BY THE ENGINEER. THE DIRECTIONAL ARROW SHALL BE COVERED OR REMOVED WHEN NO LONGER CONSISTENT WITH THE SIDE ROAD LANE CLOSURE.
- C. ADVANCE WARNING SIGNS ARE TO BE OMITTED ON DRIVEWAY UNLESS OTHERWISE NOTED.
- D. THE TRAFFIC CONTROL AND PROTECTION FOR SIDE ROADS, INTERSECTIONS, AND DRIVEWAYS SHALL BE INCIDENTAL TO THE COST OF SPECIFIED TRAFFIC CONTROL STANDARDS OR ITEMS.

ALL DIMENSIONS ARE IN INCHES (MILLIMETERS) UNLESS OTHERWISE SHOWN.

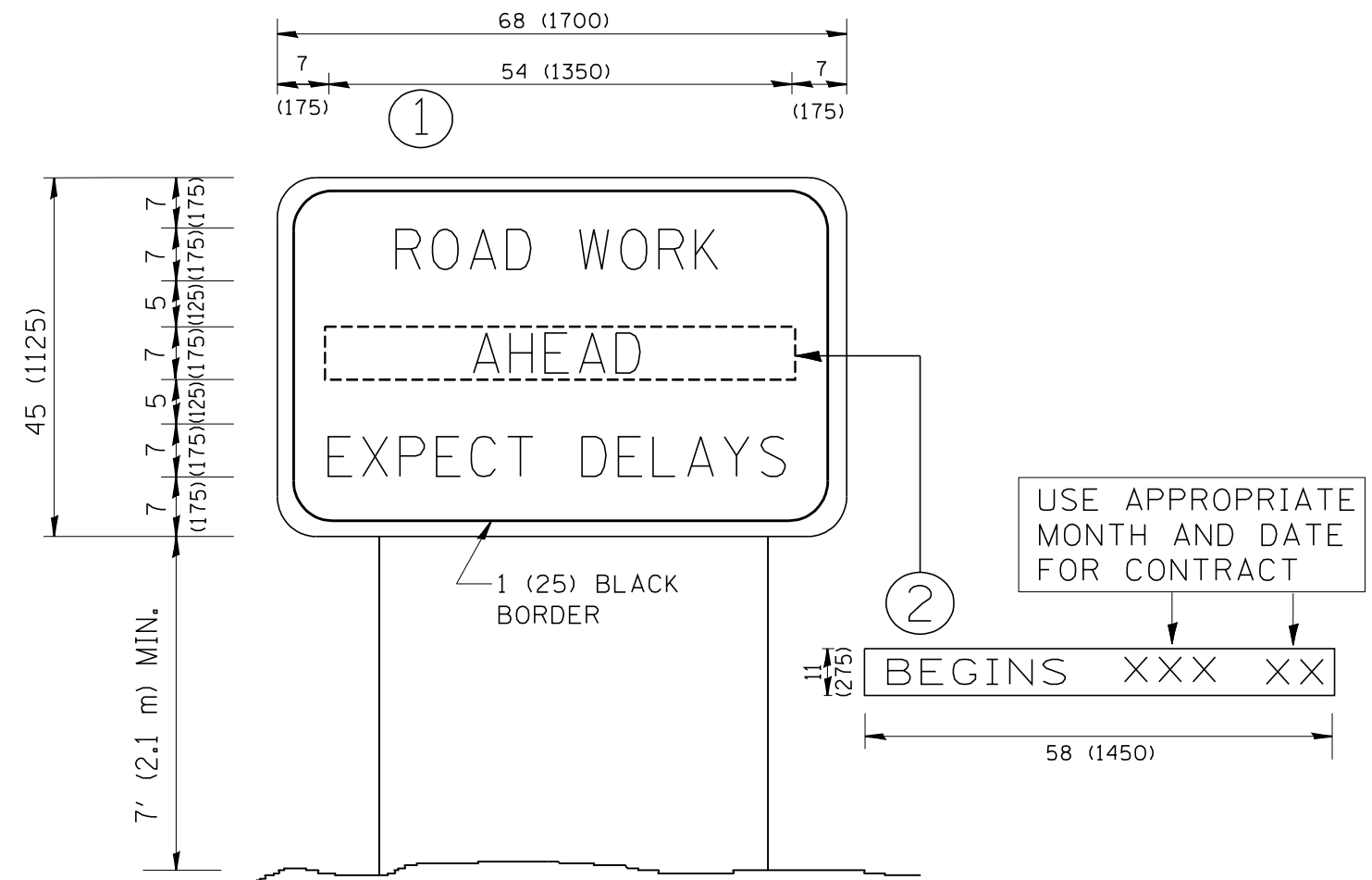
FILE NAME = W:\diststd\22x34\tc10.dgn	USER NAME = gaglionobt	DESIGNED - LHA	REVISED - J. OBERLE 10-18-95
		DRAWN -	REVISED - A. HOUSEH 03-06-96
	PLOT SCALE = 50.000' / IN.	CHECKED -	REVISED - A. HOUSEH 10-15-96
	PLOT DATE = 1/4/2008	DATE - 06-89	REVISED - T. RAMMACHER 01-06-00

STATE OF ILLINOIS  
DEPARTMENT OF TRANSPORTATION

TRAFFIC CONTROL AND PROTECTION FOR  
SIDE ROADS, INTERSECTIONS, AND DRIVEWAYS

SCALE: NONE SHEET NO. 1 OF 1 SHEETS STA. TO STA.

F.A.U. RTE. 3545	SECTION 2015-090B	COUNTY DUPAGE	TOTAL SHEETS 8	SHEET NO. 7
TC-10			CONTRACT NO. 62B96	
FED. ROAD DIST. NO. 1 ILLINOIS FED. AID PROJECT				



**NOTES:**

1. USE BLACK LETTERING ON ORANGE BACKGROUND.
2. ERECT SIGNS IN ADVANCE OF THE LOCATION FOR THE "ROAD CONSTRUCTION AHEAD" SIGN AT LOCATIONS AS DIRECTED BY THE ENGINEER.
3. ERECT SIGN ① WITH INSTALLED PANEL ② ONE WEEK PRIOR TO THE START OF CONSTRUCTION.
4. REMOVE PANEL ② SOON AFTER THE START OF CONSTRUCTION.
5. SEE SPECIAL PROVISION FOR "TEMPORARY INFORMATION SIGNING" FOR ADDITIONAL INFORMATION.
6. ONE SIGN ASSEMBLY EQUALS 25.70 SQ. FT. (2.3 SQ. M.)
7. SHALL BE PAID FOR AS TEMPORARY INFORMATION SIGNING.

ALL DIMENSIONS ARE IN INCHES (MILLIMETERS) UNLESS OTHERWISE SHOWN.

FILE NAME = W:\diststd\22x34\tc22.dgn	USER NAME = gaglianobt	DESIGNED -	REVISED - R. MIRS 09-15-97
		DRAWN -	REVISED - R. MIRS 12-11-97
	PLOT SCALE = 50.000' / IN.	CHECKED -	REVISED - T. RAMMACHER 02-02-99
	PLOT DATE = 1/4/2008	DATE -	REVISED - C. JUCIUS 01-31-07

**STATE OF ILLINOIS  
DEPARTMENT OF TRANSPORTATION**

**ARTERIAL ROAD  
INFORMATION SIGN**

SCALE: NONE SHEET NO. 1 OF 1 SHEETS STA. TO STA.

F.A.U. RTE. 3545	SECTION 2015-090B	COUNTY DUPAGE	TOTAL SHEETS 8	SHEET NO. 8
TC-22			CONTRACT NO. 62B96	
FED. ROAD DIST. NO. 1 ILLINOIS FED. AID PROJECT				