

STATE OF ILLINOIS
DEPARTMENT OF TRANSPORTATION

* 19+2 = 21 TOTAL SHEETS

F.A. RTE.	SECTION	COUNTY	TOTAL SHEETS	SHEET NO.
VAR.	2016-011LS	VARIOUS	19	1
ILLINOIS			CONTRACT NO. 62C29	

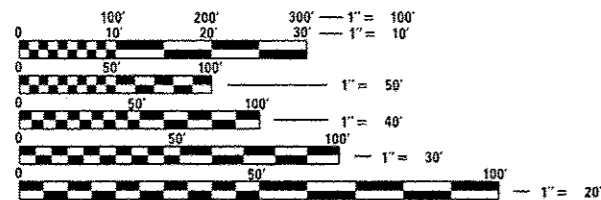
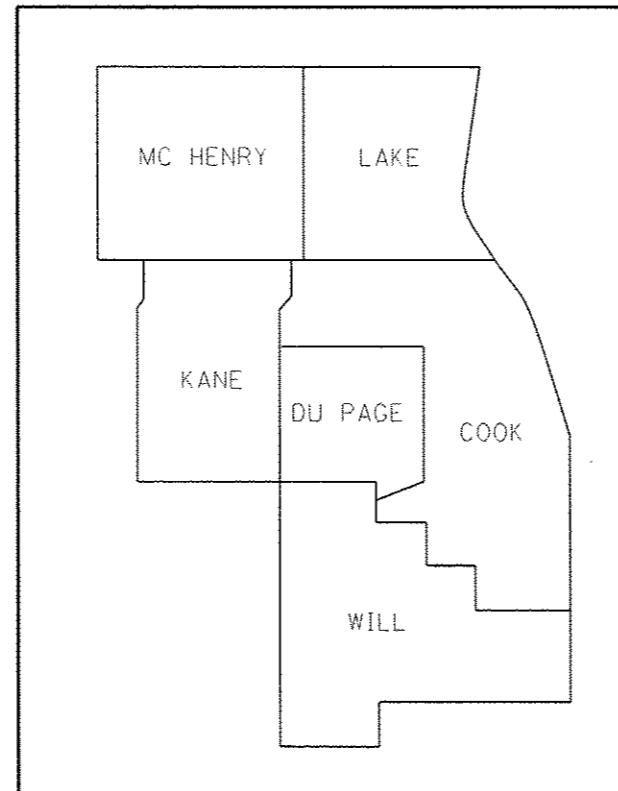
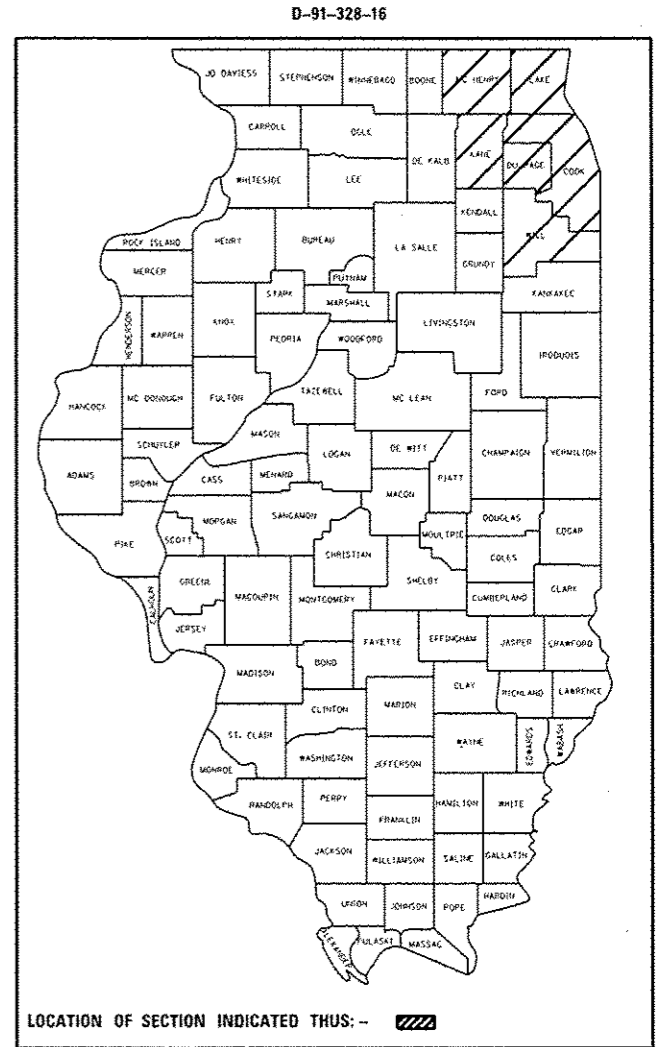
FOR INDEX OF SHEETS, SEE SHEET NO. 2

PROPOSED HIGHWAY PLANS

ROUTE: VARIOUS
SECTION: 2016-011LS
LANDSCAPE REPAIR & RESTORATION
VARIOUS COUNTIES

C-91-328-16

IMPROVEMENTS ARE AT VARIOUS
LOCATIONS WITHIN DISTRICT ONE



FULL SIZE PLANS HAVE BEEN PREPARED USING STANDARD ENGINEERING SCALES. REDUCED SIZED PLANS WILL NOT CONFORM TO STANDARD SCALES. IN MAKING MEASUREMENTS ON REDUCED PLANS, THE ABOVE SCALES MAY BE USED.

J.U.L.I.E.
JOINT UTILITY LOCATION INFORMATION FOR EXCAVATION
1-800-892-0123
OR 811

PROJECT ENGINEER JAMES STUMPNER
PROJECT MANAGERS MELISSA DEL ROSARIO &
FABIOLA QUIROZ (847) 705-4171

CONTRACT NO. 62C29

GROSS LENGTH = x.xx FT. = x.xxx MILE
NET LENGTH = x.xx FT. = x.xxx MILE

STATE OF ILLINOIS
DEPARTMENT OF TRANSPORTATION

SUBMITTED August 23, 2016
John Fortman Regional Engineer

September 30, 2016
Melissa M. Addis Regional Engineer of Design and Environment

September 30, 2016
Director of Program Development

PRINTED BY THE AUTHORITY
OF THE STATE OF ILLINOIS

INDEX OF SHEETS

SHEET NO.	DESCRIPTION
1	COVER SHEET
2	INDEX OF SHEETS, GENERAL NOTES, & STATE STANDARDS
3-4	SUMMARY OF QUANTITIES
5	GENERAL LOCATIONS
5A	CALENDAR OF CONSTRUCTION & ESTABLISHMENT WORK
5B	WORK ORDER
6-17	LANDSCAPE PLANS
18-19	DISTRICT DETAILS

GENERAL NOTES

THE CONTRACTOR SHALL ORDER PLANT MATERIAL AND SUBMIT COMPLETED PLANT INSPECTION SHEETS TO IDOT BY JANUARY 31, 2017 TO ASSURE PLANT AVAILABILITY FOR THE SPRING PLANTING SEASON.

THE CONTRACTOR SHALL CONTACT THE DISTRICT ONE ARTERIAL TRAFFIC CONTROL SUPERVISOR AT (847) 705-4470 AND THE DISTRICT ONE EXPRESS-WAY TRAFFIC CONTROL SUPERVISOR AT (847) 705-4155 IN ADVANCE OF BEGINNING WORK.

BEFORE STARTING ANY EXCAVATION THE CONTRACTOR SHALL CALL THE STATE ELECTRICAL MAINTENANCE CONTRACTOR AT (773) 267-7600, EXTENSION 601, FOR FIELD LOCATIONS OF BURIED CABLE. THE CONTRACTOR SHALL ALSO CALL "JULIE" AT 800-892-0123 AND C.U.A.N. (CHICAGO UTILITY ALERT NETWORK) AT 312-744-7000 FOR FIELD LOCATIONS OF BURIED ELECTRICAL, TELEPHONE, AND GAS FACILITIES. 148 HOUR NOTIFICATION IS REQUIRED.

THE CONTRACTOR SHALL ADHERE TO LIMITS OF RESTORATION SHOWN. AREAS OUTSIDE THESE LIMITS THAT ARE DAMAGED OR DISTURBED BY THE CONTRACTOR SHALL BE RESTORED AT THE CONTRACTOR'S OWN EXPENSE. NO ADDITIONAL COMPENSATION WILL BE ALLOWED.

LANE CLOSURES, WORK ZONE RESTRICTIONS, REVISED WORK DAY HOURS AND WEEKEND OR HOLIDAY WORK SCHEDULES ARE SUBJECT TO THE APPROVAL OF THE COMMISSIONER. THE CONTRACTOR MUST RECEIVE WRITTEN AUTHORIZATION, EITHER BY PERMIT OR NOTIFICATION BY THE ENGINEER, BEFORE PROCEEDING WITH WORK UNDER THESE CIRCUMSTANCES.

PAY ITEMS IN THE SUMMARY OF QUANTITIES HAVE BEEN ESTIMATED. IF, IN THE ENGINEER'S OPINION, THE WORK IS NOT REQUIRED, THE ITEM WILL BE DEDUCTED FROM THE CONTRACT AND NO ADDITIONAL COMPENSATION TO THE CONTRACTOR WILL BE ALLOWED.

WORK PLANS WILL BE GIVEN AT THE PRECONSTRUCTION MEETING.

HIGHWAY STANDARDS

701001-02	OFF-ROAD OPERATIONS, 2L, 2W, MORE THAN 15 AWAY
701006-05	OFF-ROAD OPERATIONS, 2L, 2W, 15' TO 24' FROM PAVEMENT EDGE
701011-04	OFF-ROAD MOVING OPERATIONS, 2L, 2W, DAY ONLY
701106-02	OFF-ROAD OPERATIONS, MULTILANE, MORE THAN 15 AWAY
701501-06	URBAN LANE CLOSURE, 2L, 2W, UNDIVIDED
701601-09	URBAN LANE CLOSURE, MULTILANE, 1W OR 2W WITH NON TRAVERSABLE MEDIAN
701701-10	URBAN LANE CLOSURE, MULTILANE INTERSECTION
701901-05	TRAFFIC CONTROL DEVICES

FILE NAME: I:\Projects\2016\2016-0115\16-0115-01\16-0115-01.dwg	USER NAME: jwagner	DESIGNED: jwagner	REVISED: 9/13/2016	STATE OF ILLINOIS DEPARTMENT OF TRANSPORTATION	INDEX OF SHEETS, GENERAL NOTES, & STATE STANDARDS	F.A. RTE.:	SECTION:	COUNTY:	TOTAL SHEET NO.:
PLT SCALE: 1/8"=1'-0"	CHECKED: jwagner	REVISED:	VAR.:			2016-0115	VARIOUS	2	
PLT DATE: 9-13-2016	DATE:	REVISED:	CONTRACT NO. 62C29						
					SCALE: _____	SHEET _____ OF _____ SHEETS		STA. _____ TO STA. _____	ILLINOIS FED. AID PROJECT

SUMMARY OF QUANTITIES			CONSTRUCTION TYPE CODE					SUMMARY OF QUANTITIES			CONSTRUCTION TYPE CODE					
CODE NO	ITEM	UNIT	URBAN 100% STATE TOTAL QUANTITIES	CONT. MAINT. FUND 0031				CODE NO	ITEM	UNIT	URBAN 100% STATE TOTAL QUANTITIES	CONT. MAINT. FUND 0031				
X180001	SHRUB, VIBURNUM DENTATUM RASTZAM (RASPBERRY TART ARROWWOOD VIBURNUM), 24" HEIGHT, 5-GALLON CONTAINER	EACH	50	50				A2000316	TREE, ACER MIYABEI MORTON (STATE STREET MIYABEI MAPLE), 2" CALIPER, BALLED AND BURLAPPED	EACH	1	1				
20101700	SUPPLEMENTAL WATERING	UNIT	25	25				A2002916	TREE, CELTIS OCCIDENTALIS (COMMON HACKBERRY), 2" CALIPER, BALLED AND BURLAPPED	EACH	10	10				
21101605	TOPSOIL FURNISH AND PLACE, 2"	50 YD	3630	3630				A2005016	TREE, GYMNOCLADUS DIOICUS (KENTUCKY COFFEETREE), 2" CALIPER, BALLED AND BURLAPPED	EACH	22	22				
21101615	TOPSOIL FURNISH AND PLACE, 4"	50 YD	1100	1100				A2006516	TREE, QUERCUS BICOLOR (SWAMP WHITE OAK), 2" CALIPER, BALLED AND BURLAPPED	EACH	15	15				
21101665	TOPSOIL FURNISH AND PLACE, 18"	50 YD	880	880				A2006716	TREE, QUERCUS MACROCARPA (BUR OAK), 2" CALIPER, BALLED AND BURLAPPED	EACH	1	1				
25000210	SEEDING, CLASS 2A	ACRE	0.75	0.75				A2008468	TREE, ULMUS AMERICANA PRINCETON (PRINCETON AMERICAN ELM), 2" CALIPER, BALLED AND BURLAPPED	EACH	11	11				
25000400	NITROGEN FERTILIZER NUTRIENT	POUND	100	100				A2018718	TREE, ULMUS CARPINIFOLIA MORTON, (ACCOLADE ELM), 2" CALIPER, BALLED AND BURLAPPED	EACH	1	1				
25000500	PHOSPHORUS FERTILIZER NUTRIENT	POUND	100	100				B2000764	TREE, AMELANCHIER X GRANDIFLORA AUTUMN BRILLIANCE (AUTUMN BRILLIANCE SERVICE BERRY), 5' HEIGHT, SHRUB FORM, BALLED AND BURLAPPED	EACH	15	15				
25000600	POTASSIUM FERTILIZER NUTRIENT	POUND	100	100												
25100630	EROSION CONTROL BLANKET	50 YD	3630	3630												
25200110	SODDING, SALT TOLERANT	50 YD	1100	1100												
67100100	MOBILIZATION	LSLM	1	1												
A2000116	TREE, ACER X FREEMANII AUTUMN BLAZE (AUTUMN BLAZE FREEMAN MAPLE), 2" CALIPER, BALLED AND BURLAPPED	EACH	6	6												

SUMMARY OF QUANTITIES				CONSTRUCTION TYPE CODE				SUMMARY OF QUANTITIES				CONSTRUCTION TYPE CODE			
CODE NO	ITEM	UNIT	URBAN 100% STATE TOTAL QUANTITIES	CONT. MAINT. FUND 0031				CODE NO	ITEM	UNIT	TOTAL QUANTITIES				
B2001616	TREE, CRATAEGUS CRUSGALLI INERMIS (THORN LESS COCKSPUR HAWTHORN), 2" CALIPER. TREE FORM, BALLED AND BURLAPPED	EACH	1	1											
B2001664	TREE, CRATAEGUS CRUSGALLI INERMIS (THORN LESS COCKSPUR HAWTHORN), 5' HEIGHT. SHRUB FORM, BALLED AND BURLAPPED	EACH	1	1											
B2004000	TREE, MALUS ORANGE CRUSH (ORANGE CRUSH CRABAPPLE), 6' HEIGHT. CLUMP FORM, BALLED AND BURLAPPED	EACH	1	1											
B2006316	TREE, SYRINGA RETICULATA IVORY SILK (IVORY SILK JAPANESE TREE LILAC), 2" CALIPER. TREE FORM, BALLED AND BURLAPPED	EACH	16	16											
C2C01905	SHRUB, ARONIA MELANOCARPA (IROQUOIS BEAUTY (IROQUOIS BEAUTY BLACK CHOKEBERRY), CONTAINER GROWN, 5-GALLON	EACH	178	178											
C2C10924	SHRUB, SYRINGA MEYERI PALIBIN (DWARF KOREAN LILAC), 2' HEIGHT, CONTAINER	EACH	16	16											
E2021001	VINE-PARTHENOCEISSUS QUINQUEFOLIA ENGELMANNII (ENGELMANNII VIRGINIA CREEPER), 1-GALLON POT	EACH	20	20											
X2010310	TREE REMOVAL (SPECIAL)	UNIT	13	13											

8

COUNTY	CITY/TOWN	SHEET #	GENERAL LOCATION
DUPAGE	WARRENVILLE	6-10	IL 56/BUTTERFIELD RD: WEST OF IL 59 TO EAST OF WINFIELD ROAD
DUPAGE	LOMBARD	11	21 S. COLUMBINE AVENUE (IL 53)
DUPAGE	WOODDALE	12	IL 83 (SOUTHBOUND): BETWEEN MONTROSE AVE. & SHERWOOD DR.
COOK	CHICAGO	13-14	IDOT EISENHOWER MAINTENANCE YARD, NORTHWEST CORNER OF LARAMIE AVENUE AND FLOURNOY STREET
COOK	CHICAGO	15	I-90 EAST (KENNEDY EXPRESSWAY) FULLERTON ENTRANCE RAMP
LAKE	LINCOLNSHIRE	16-17	CORNER OF OAKWOOD DRIVE AND IL 22, IN FRONT OF 94 OAKWOOD LANE RESIDENCE



**LANDSCAPE REPAIR
WORK ORDER
CONTRACT 62C29**

WORK ORDER NUMBER	PAGE: _____ OF _____
-------------------	----------------------

MARKED ROUTE	LOCATION	COUNTY	MUNICIPALITY

WORK ORDER SUMMARY

PAY CODE	PAY ITEM	QUANTITY

SPECIAL INSTRUCTIONS	

AUTHORIZATION OF WORK ORDER	CERTIFICATION OF COMPLETED WORK
IDOT Resident Engineer/Technician Signature	Contractor Signature
Date Work Order Issued _____ Contractor Initials _____	Date Work Order Completed _____

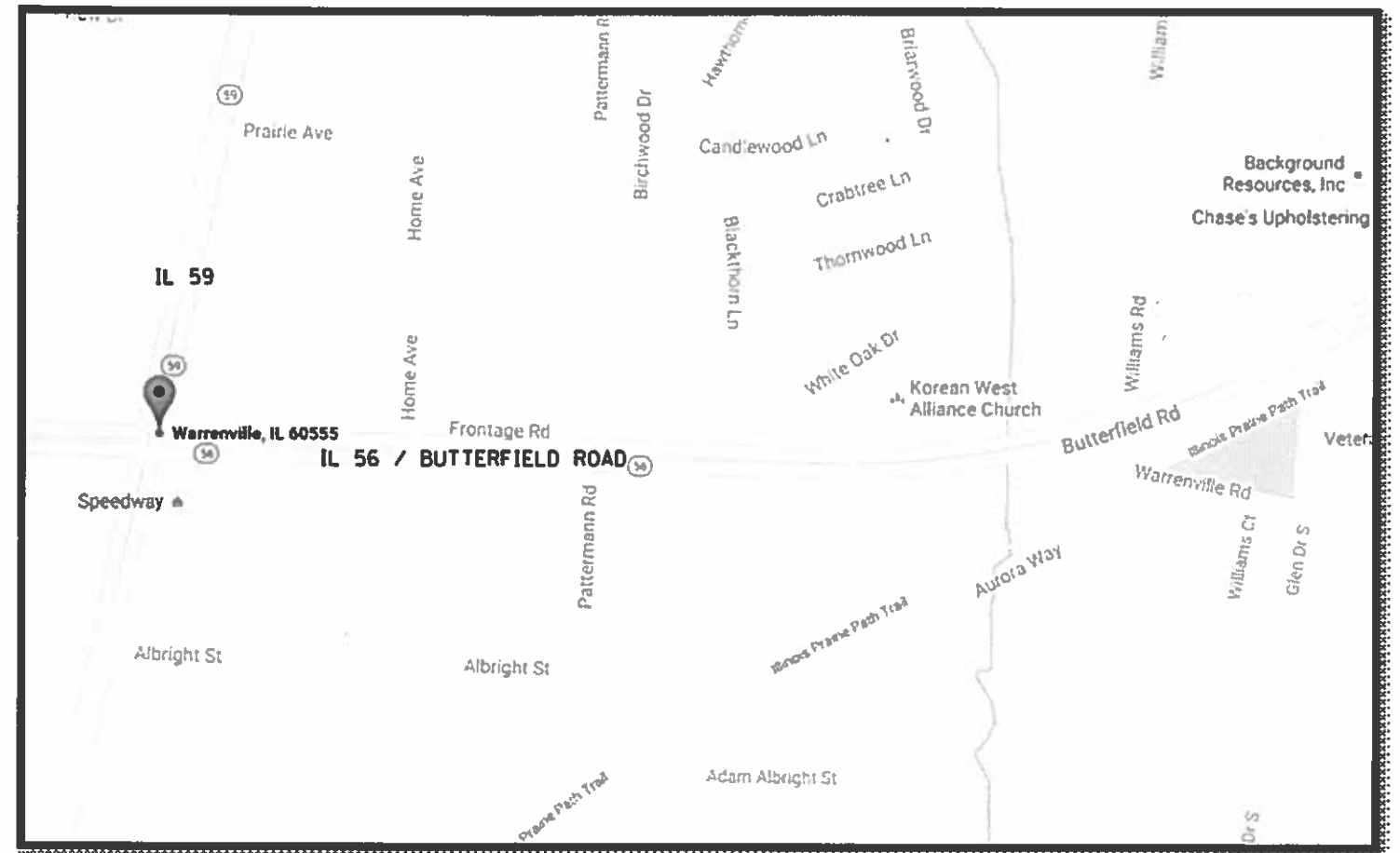
OFFICE USE ONLY	INSPECTION AND ACCEPTANCE OF COMPLETED WORK										
<table border="1"> <tr> <th>INITIAL(S)</th> <th>DATE</th> </tr> <tr> <td>Prepared by: _____</td> <td>_____</td> </tr> <tr> <td>Measured in place by: _____</td> <td>_____</td> </tr> <tr> <td>Calculated by: _____</td> <td>_____</td> </tr> <tr> <td>Checked by: _____</td> <td>_____</td> </tr> </table>	INITIAL(S)	DATE	Prepared by: _____	_____	Measured in place by: _____	_____	Calculated by: _____	_____	Checked by: _____	_____	<p align="center">Inspector Signature</p> <p align="center">Date Work Ordered Inspected and Accepted _____</p> <p align="center">This is to certify that the work has been completed in conformance with contract</p>
INITIAL(S)	DATE										
Prepared by: _____	_____										
Measured in place by: _____	_____										
Calculated by: _____	_____										
Checked by: _____	_____										

THIS WORK ORDER IS A SAMPLE FORM ONLY.

SCHEDULE OF LANDSCAPE ITEMS

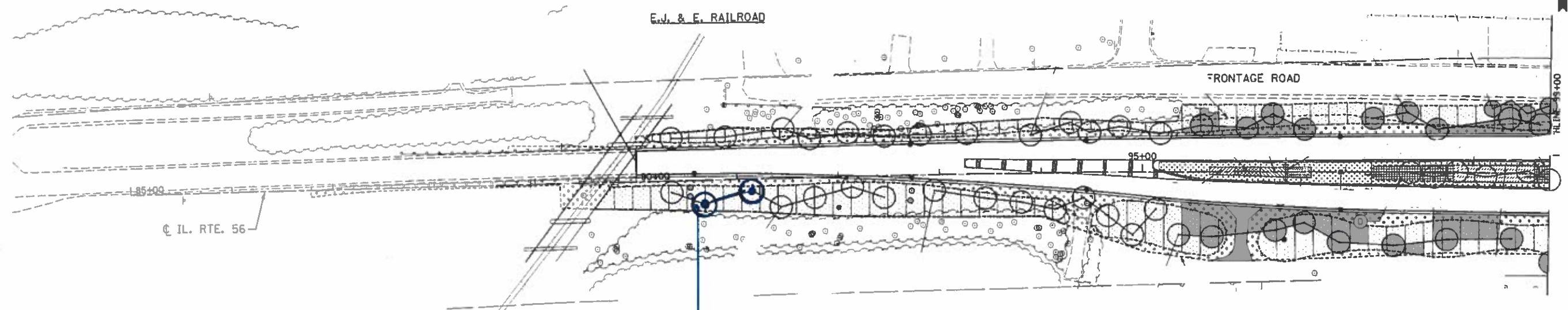
GENERAL LOCATION MAP

DESCRIPTION	TOTAL QUANTITY / UNIT
ACER MIYABEI 'MORTON', 2" CALIPER	1 EACH
GYMNOCLADUS DIOICUS, 2" CALIPER	11 EACH
QUERCUS BICOLOR, 2" CALIPER	3 EACH
QUERCUS MACROCARPA, 2" CALIPER	1 EACH
ULMUS 'MORTON' (ACCOLADE), 2" CALIPER	1 EACH
CRATAEGUS CRUSGALLI INERMIS, 5' HT.	1 EACH
CRATAEGUS CRUSGALLI INERMIS, 2" CALIPER	1 EACH
MALUS 'ORANGE CRUSH', 5' HEIGHT	1 EACH



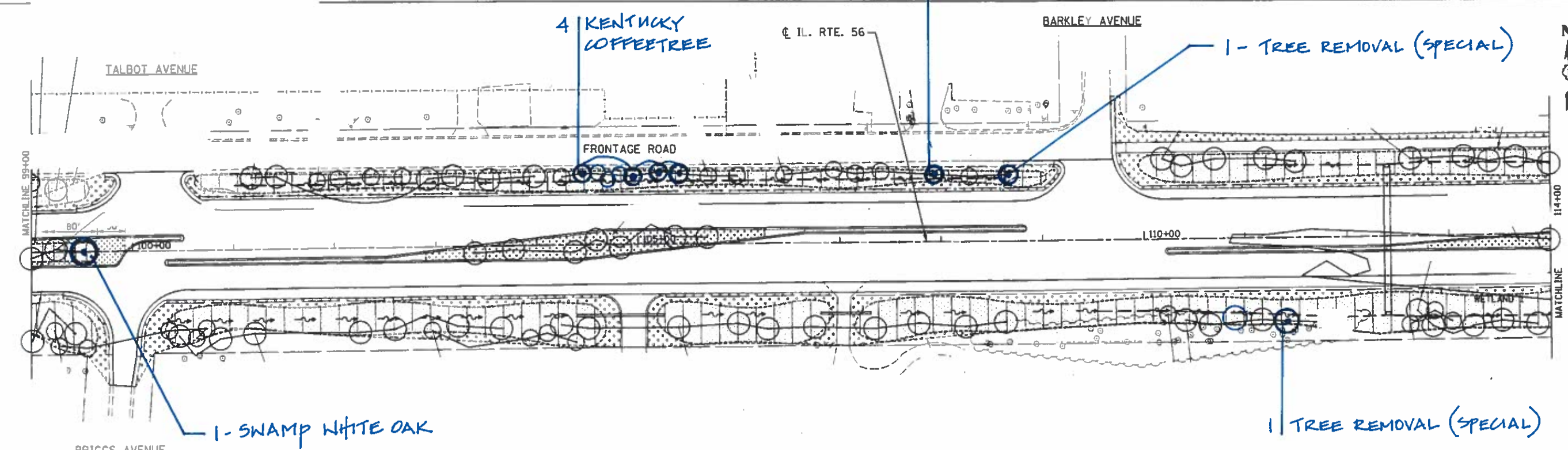
NOTE: THE GENERAL LOCATION MAP SHOWS THE GENERAL VICINITY OF PLANT LOCATIONS ALONG IL 56. PLANT LOCATIONS WILL EXTEND TO THE WEST OF IL 59 (TO THE RAILROAD) AND TO THE EAST TO THE WEST BRANCH DUPAGE RIVER.

FILE NAME: \\IL084EBID\INTEG\Illinois.gov\PI\DOT\Documents\DOT Offices\District 1\Projects\DI084EBID\Structures\DI084EBID_Landscape	USER NAME: deloras@dot.state.il.gov	DESIGNED: ORAN	REVISED: -	STATE OF ILLINOIS DEPARTMENT OF TRANSPORTATION	IL 56/BUTTERFIELD RD.: W/O IL 59 TO E/O WINFIELD RD. WARRENVILLE, DUPAGE COUNTY			F.A. RTE.:	SECTION	COUNTY	TOTAL SHEETS	SHEET NO.	
Default	PLOT SCALE: 1/32" = 1' / in.	CHECKED: -	REVISED: -					VAR.:	2016-11LS	VARIOUS	6	6	
	PLOT DATE: 8/8/2016	DATE: -	REVISED: -					SCALE: _____ SHEET _____ OF _____ SHEETS STA. _____ TO STA. _____				CONTRACT NO. 62C29	
								ILLINOIS FED. AID PROJECT					



2 TREE REMOVAL (SPECIAL)

1 KENTUCKY COFFEETREE



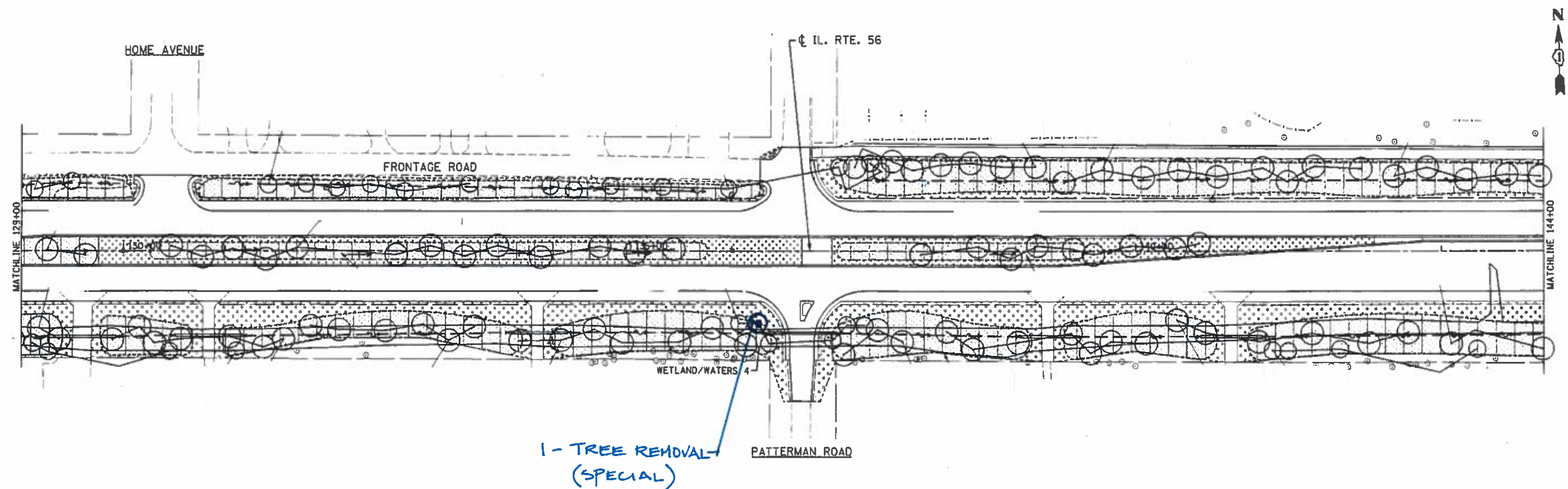
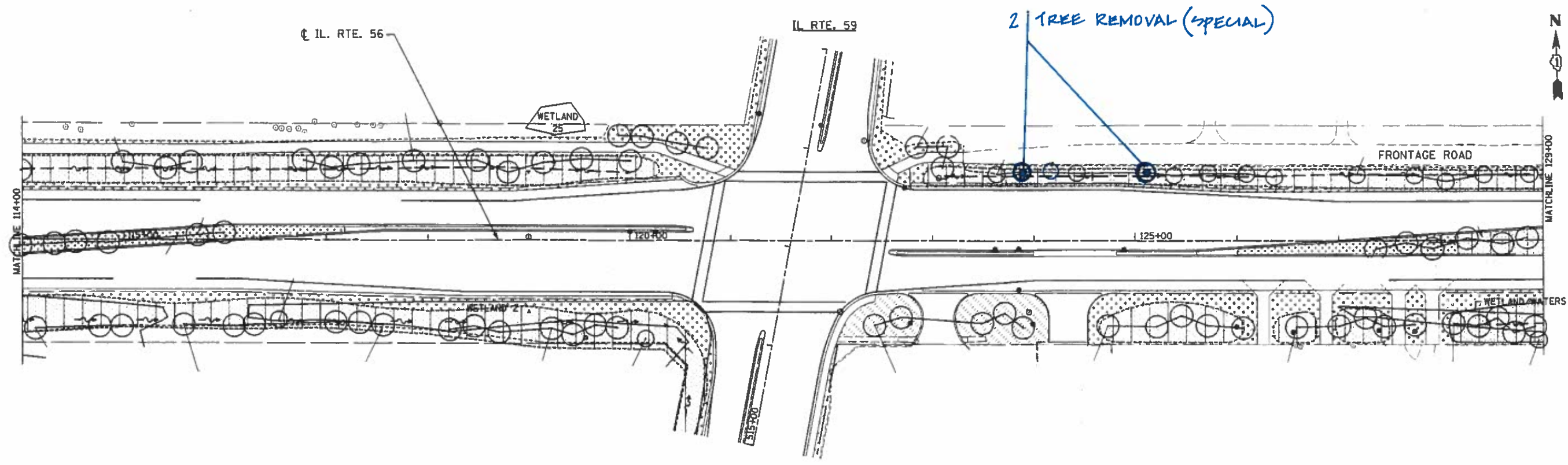
4 KENTUCKY COFFEETREE

1 - TREE REMOVAL (SPECIAL)

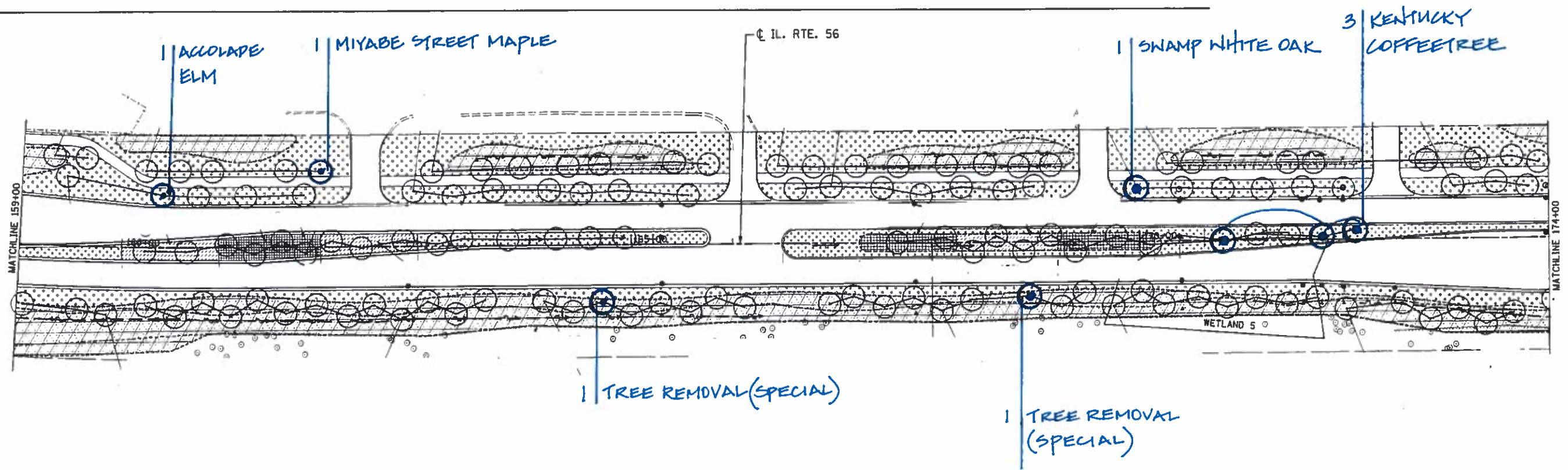
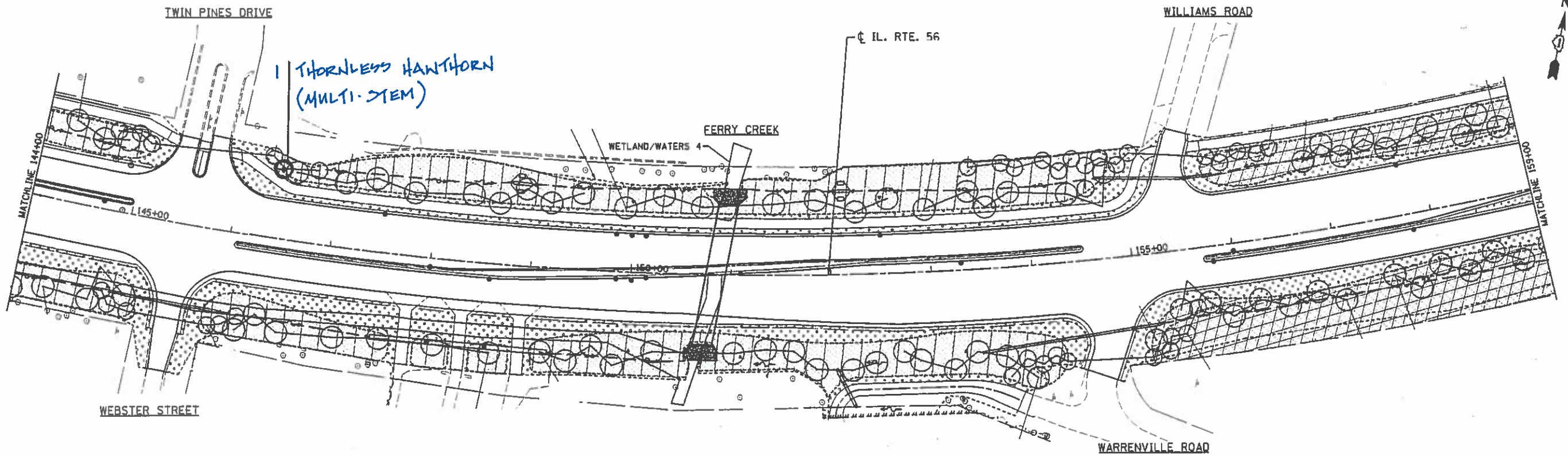
1 - SWAMP WHITE OAK

1 TREE REMOVAL (SPECIAL)

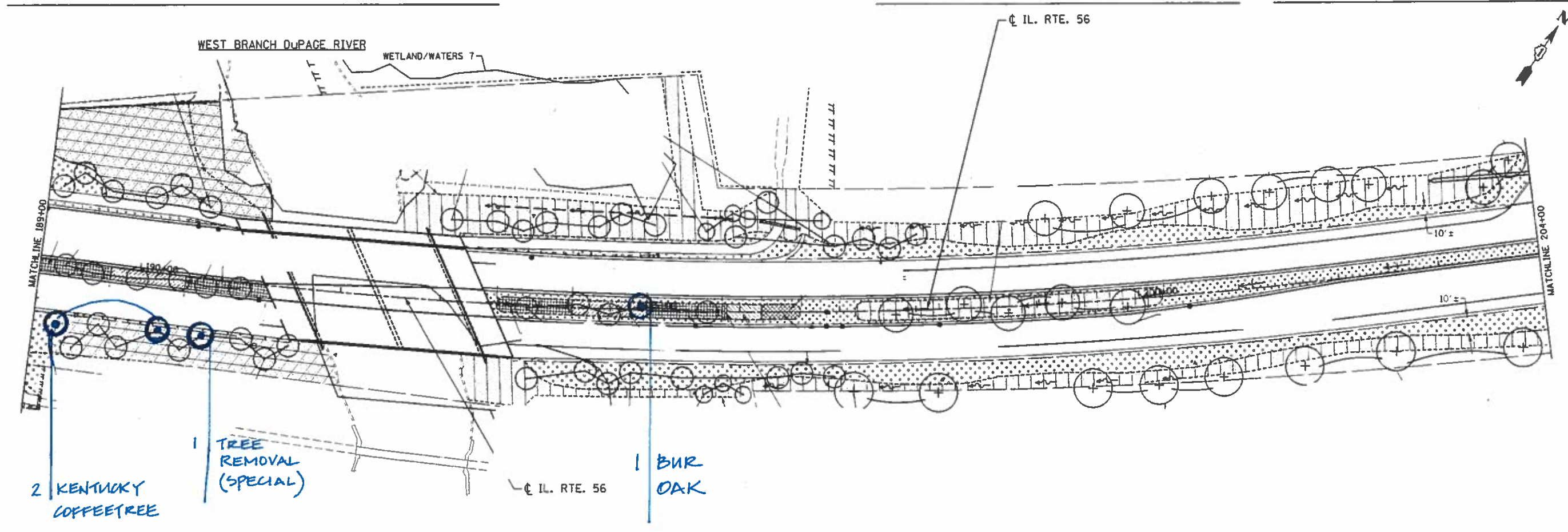
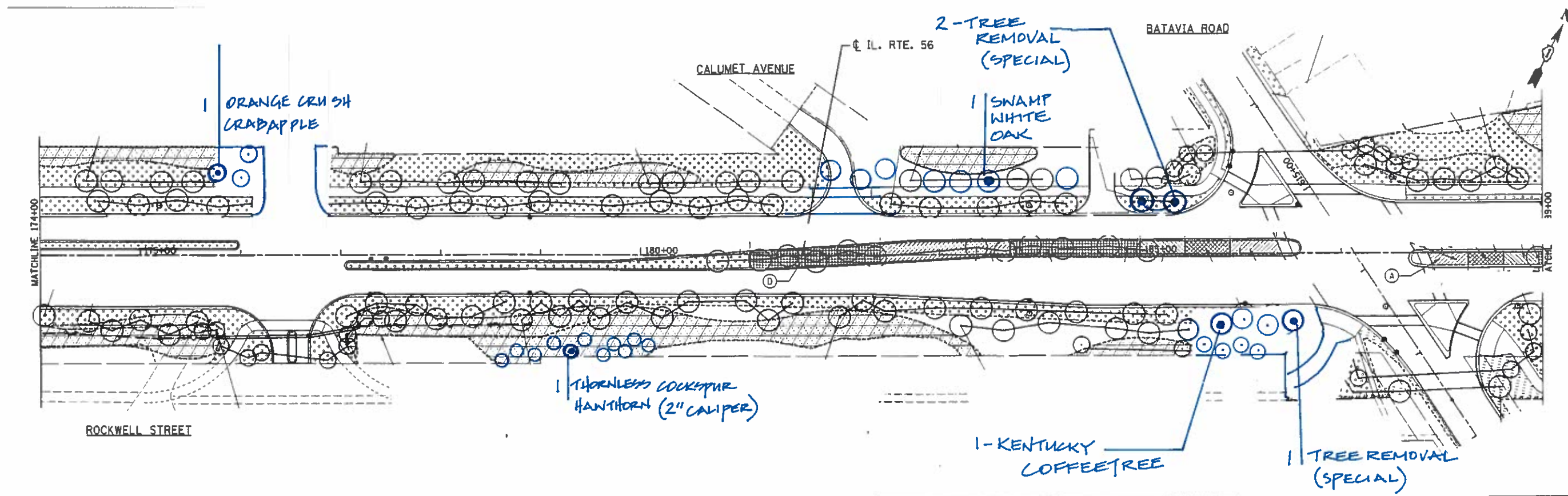
FILE NAME p:\11084EB\DOT\ITEG\Illinois\g01\PI\DOT\Default	USER NAME delroy@ids	DESIGNED ORAN@data.Structures.DIG\Blaht.Land	REVISED REVISED	STATE OF ILLINOIS DEPARTMENT OF TRANSPORTATION	IL 56: WEST OF IL 59 TO EAST OF WINFIELD RD. WARRENVILLE, DUPAGE COUNTY	F.A. RTE. VAR.	SECTION 2016-DIILS	COUNTY VARIOUS	TOTAL SHEETS 7	SHEET NO. 7
	PLOT SCALE 102,056"	CHECKED	REVISED			SCALE: _____	SHEET _____ OF _____ SHEETS	STA. _____ TO STA. _____	CONTRACT NO. 62C29	
Default	PLOT DATE 8 8 2016	DATE	REVISED							



FILE NAME * USER NAME * delrosarios PROJECT * 1L084EB10/ITEG-illinois.gov/PW1001/De PLOT SCALE * 102.0567 / in. PLOT DATE * 8/8/2016	DESIGNED -	REVISED -	STATE OF ILLINOIS DEPARTMENT OF TRANSPORTATION	IL 56: WEST OF IL 59 TO EAST OF WINFIELD RD. WARRENVILLE, DUPAGE COUNTY	F.A. RTE. -	SECTION -	COUNTY -	TOTAL SHEETS -	SHEET NO. -	
	DRAWN -	REVISED -			VAR. -	2016-0115	VARIOUS	8	8	
	CHECKED -	REVISED -			SCALE: _____ SHEET OF SHEETS STA. TO STA.			CONTRACT NO. 62C29		
	DATE -	REVISED -			ILLINOIS FED. AID PROJECT					



FILE NAME	USER NAME	DESIGNED	REVISED	STATE OF ILLINOIS DEPARTMENT OF TRANSPORTATION	IL 56: WEST OF IL 59 TO EAST OF WINFIELD RD. WARRENVILLE, DUPAGE COUNTY	F.A. RTE.	SECTION	COUNTY	TOTAL SHEETS	SHEET NO.	
path: \\IL094EB\0\ITEC\Illinois\gpi\PIDOT\Docu	ments\DOT Offices District 1\Projects\CID	DRAWN	REVISED			VAR.	2016-0115	VARIOUS	9	9	
Default	PLOT SCALE	CHECKED	REVISED			CONTRACT NO. 62C29					
	PLOT DATE	DATE	REVISED			ILLINOIS FED. AID PROJECT					

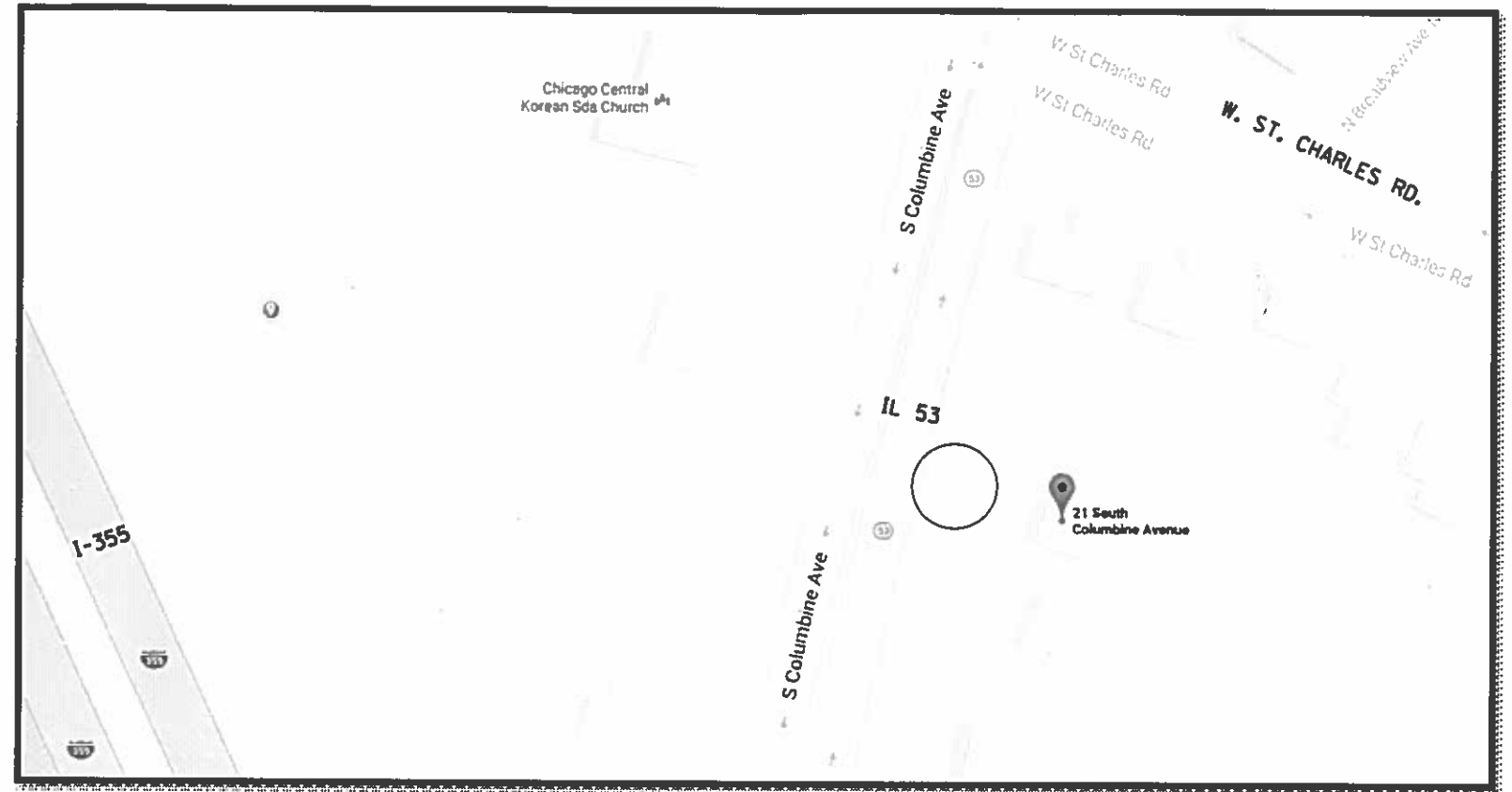


FILE NAME g:\11\094EB\CD\INTEC\Illinois.gov\PM\007\00	USER NAME d\j\j\j\j\j	DESIGNED -	REVISED -	STATE OF ILLINOIS DEPARTMENT OF TRANSPORTATION	IL 56: WEST OF IL 59 TO EAST OF WINFIELD RD. WARRENVILLE, DUPAGE COUNTY	F.A. RTE.	SECTION 2016-0115	COUNTY VARIOUS	TOTAL SHEETS 10	SHEET NO. 10
	PLOT SCALE 1/32" = 1'	DRAWN Structures	REVISED -			VAR.	CONTRACT NO. 62C29			
	PLOT DATE 8/8/2016	CHECKED -	REVISED -			SCALE:	SHEET OF SHEETS STA. TO STA.	ILLINOIS FED. AID PROJECT		
	DATE -	REVISED -	REVISED -			SHEET OF SHEETS STA. TO STA.	ILLINOIS FED. AID PROJECT			

SCHEDULE OF LANDSCAPE ITEMS

GENERAL LOCATION MAP

DESCRIPTION	TOTAL QUANTITY / UNIT
SYRINGA RETICULATA 'IVORY SILK', 2" CAL.	1 EACH



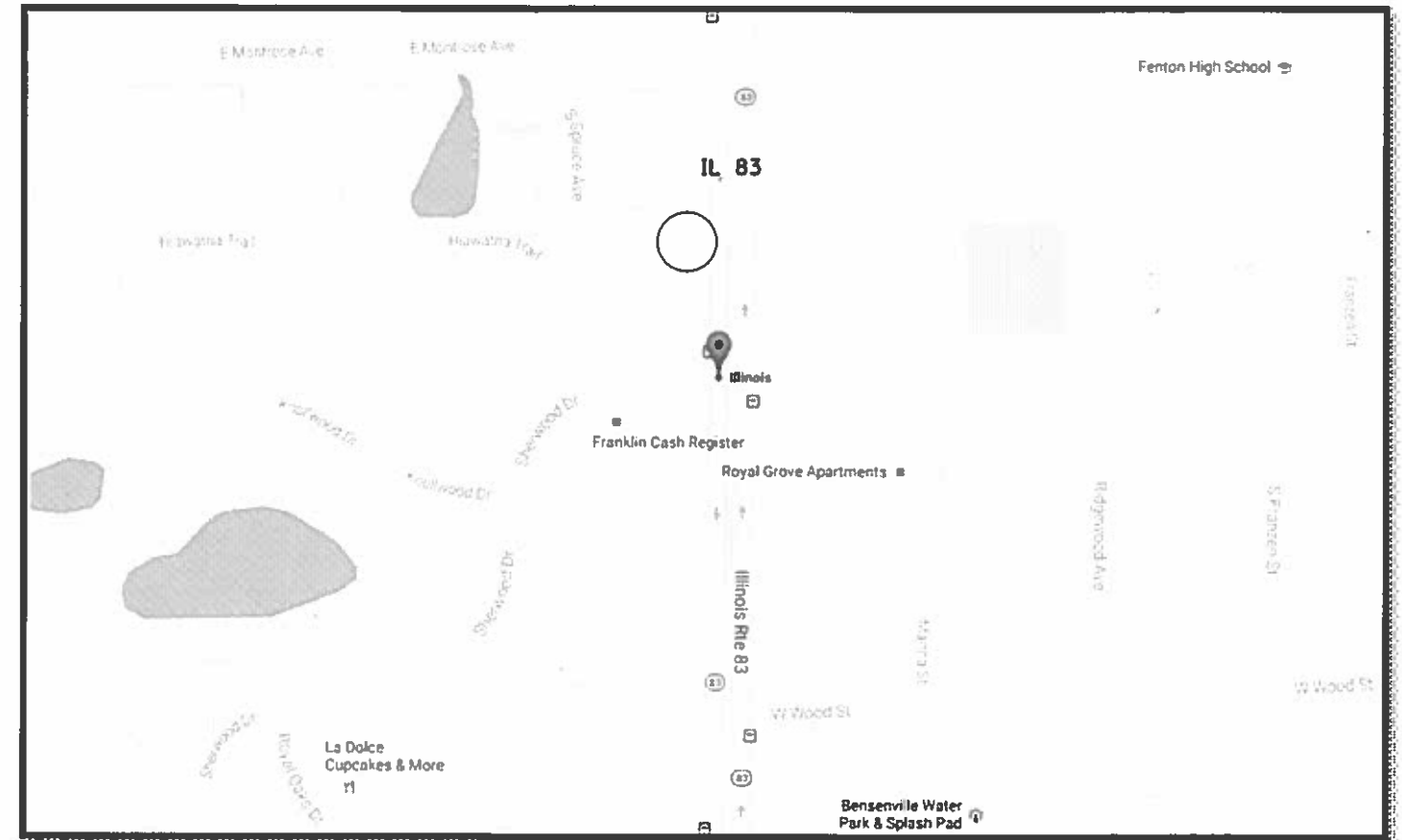
NOTE: THE PLANT LOCATION WILL BE WITHIN IDOT R.O.W. IN FRONT OF 21 S. COLUMBINE AVE.

FILE NAME #	USER NAME # delrodriguez	DESIGNED -	REVISED -	STATE OF ILLINOIS DEPARTMENT OF TRANSPORTATION	21 S. COLUMBINE (IL 53) LOMBARD, DUPAGE COUNTY	F.A. RTE.	SECTION	COUNTY	TOTAL SHEETS	SHEET NO.	
p:\11\1084EBID\ITEG\Illinois\go-p\IDOT\Documents\IDOT Offices\District 1\Projects\1010	FORAN	CHECKED -	REVISED -			VAR.	2016-011LS	VARIOUS	11	11	
Default	PLOT SCALE = 102.0567' / in.	DATE -	REVISED -			SCALE: _____ SHEET _____ OF _____ SHEETS STA. _____ TO STA. _____		CONTRACT NO. 62C29			
	PLOT DATE = 8/8/2016					ILLINOIS FED. AID PROJECT					

SCHEDULE OF LANDSCAPE ITEMS

DESCRIPTION	TOTAL QUANTITY / UNIT
ACER X FREEMANII 'AUTUMN BLAZE', 2" CAL.	1 EACH
AMELANCHIER X GRANDIFLORA 'AUTUMN BRILLIANCE', 5' HEIGHT	15 EACH

GENERAL LOCATION MAP



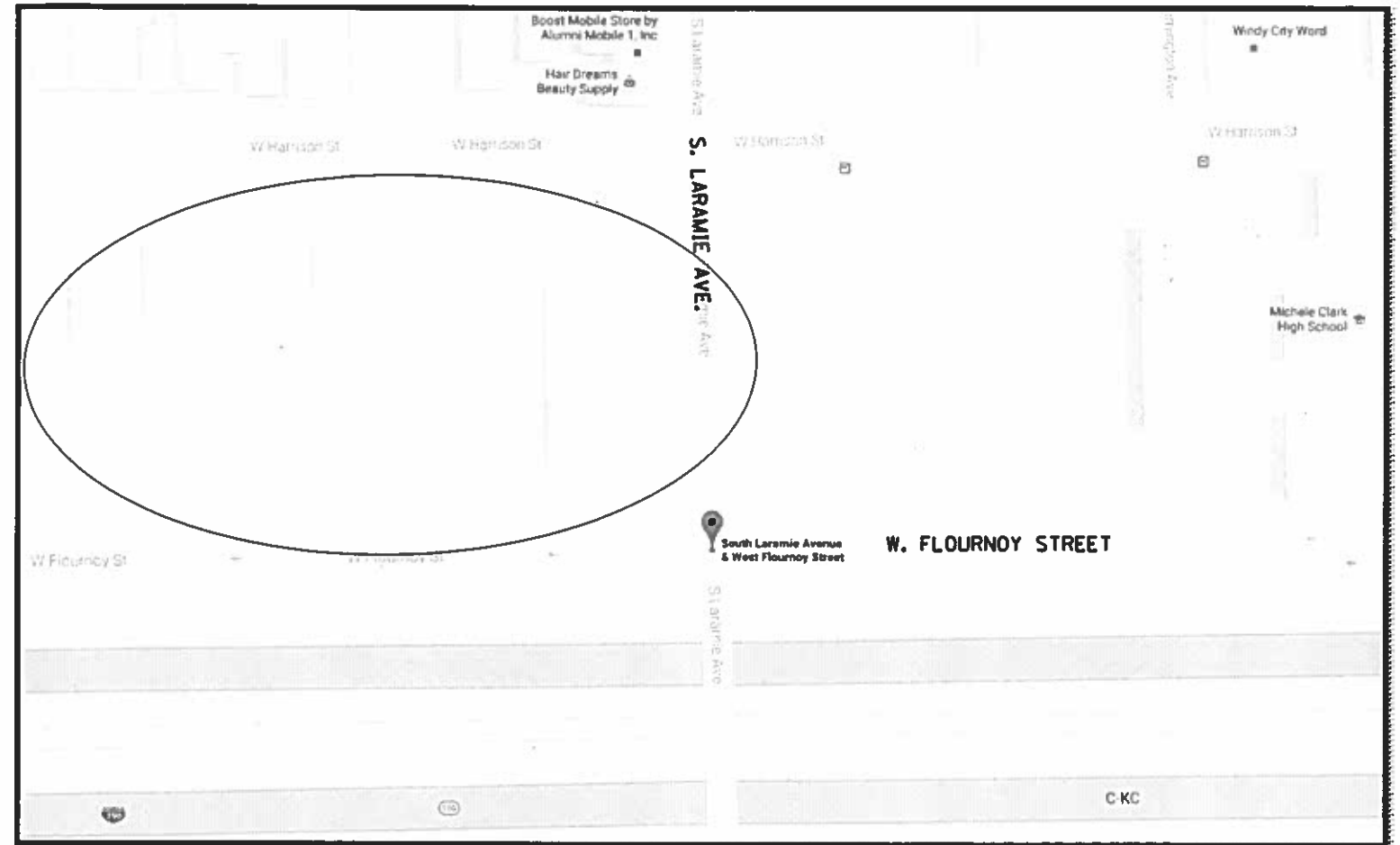
NOTE: THE PLANT LOCATION WILL BE WITHIN IDOT R.O.W. ALONG IL 83 SOUTHBOUND, IN BACK OF THE CONDOMINIUM COMPLEX BETWEEN MONTROSE AVENUE AND SHERWOOD DRIVE.

FILE NAME : p:\11\084EBID\IT\EC\Illinois.gov\PK\DOT Documents\DOT Offices District 1\Projects\CID	USER NAME : delrosario	DESIGNED : DRAWN : Structures CID 1314 sht Land	REVISED : REVISED : REVISED :	STATE OF ILLINOIS DEPARTMENT OF TRANSPORTATION	IL 83: BETWEEN MONTROSE AVENUE & SHERWOOD DRIVE WOODDALE, DUPAGE COUNTY	F.A. RTE.	SECTION	COUNTY	TOTAL SHEETS	SHEET NO.
Default	PLOT SCALE : 102.0567 in.	CHECKED : DATE :	REVISED : REVISED :			VAR.	2016-11LS	VARIOUS	12	CONTRACT NO. 62C29
	PLOT DATE : 8/8/2016	DATE :	REVISED :			ILLINOISIFIED AID PROJECT				

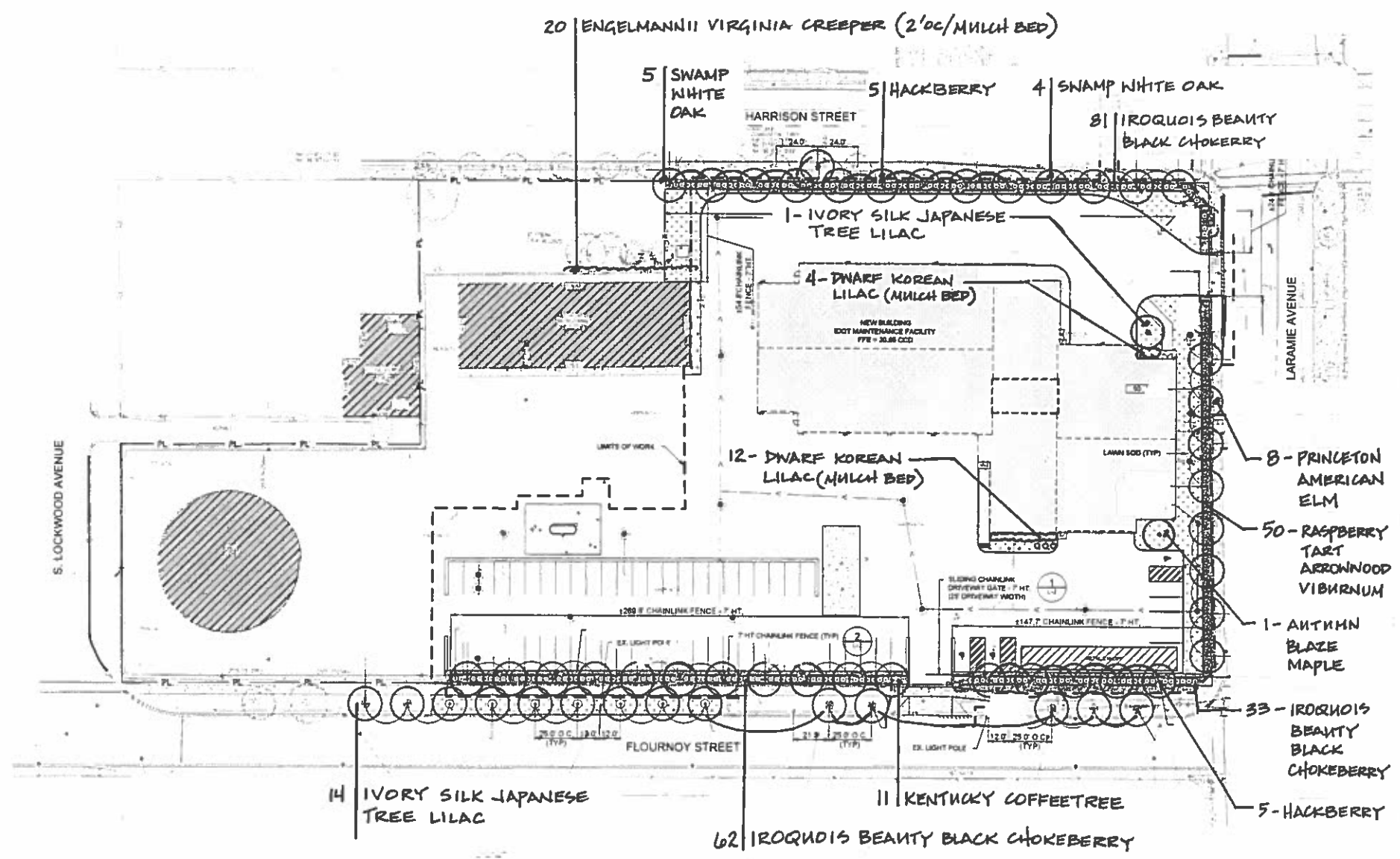
SCHEDULE OF LANDSCAPE ITEMS

GENERAL LOCATION MAP

DESCRIPTION	TOTAL QUANTITY / UNIT
ACER X FREEMANII 'AUTUMN BLAZE', 2" CAL.	1 EACH
CELTIS OCCIDENTALIS, 2" CALIPER	9 EACH
GYMNOCLADUS DIOICUS, 2" CALIPER	8 EACH
QUERCUS BICOLOR, 2" CALIPER	3 EACH
ULMUS AMERICANA 'PRINCETON', 2" CAL.	18 EACH
SYRINGA RETICULATA 'IVORY SILK', 2" CAL.	15 EACH
ARONIA MELANOCARPA 'MORTON', #5 CONT.	178 EACH
SYRINGA MEYERI 'PALIBIN', #5 CONT.	16 EACH
VIBURNUM DENTATUM 'RASPBERRY TART', #5 CONT.	50 EACH



FILE NAME p:\11\10846810\ITEC\illinois\go\p\10101\00	USER NAME delrosario	DESIGNED -	REVISED -	STATE OF ILLINOIS DEPARTMENT OF TRANSPORTATION	IDOT EISENHOWER MAINTENANCE YARD, LARAMIE AVE. & FLOURNOY ST. CHICAGO, COOK COUNTY	F.A. RTE. VAR.	SECTION 2016-0115	COUNTY VARIOUS	TOTAL SHEETS 13	SHEET NO. 13		
Default	PLT SCALE # 102.0567 1/1 in.	CHECKED -	REVISED -			SCALE: _____	SHEET OF _____ SHEETS	STA. _____ TO STA. _____	ILLINOIS FED. AID PROJECT			
	PLT DATE # 8/8/2016	DATE -	REVISED -			CONTRACT NO. 62C29						

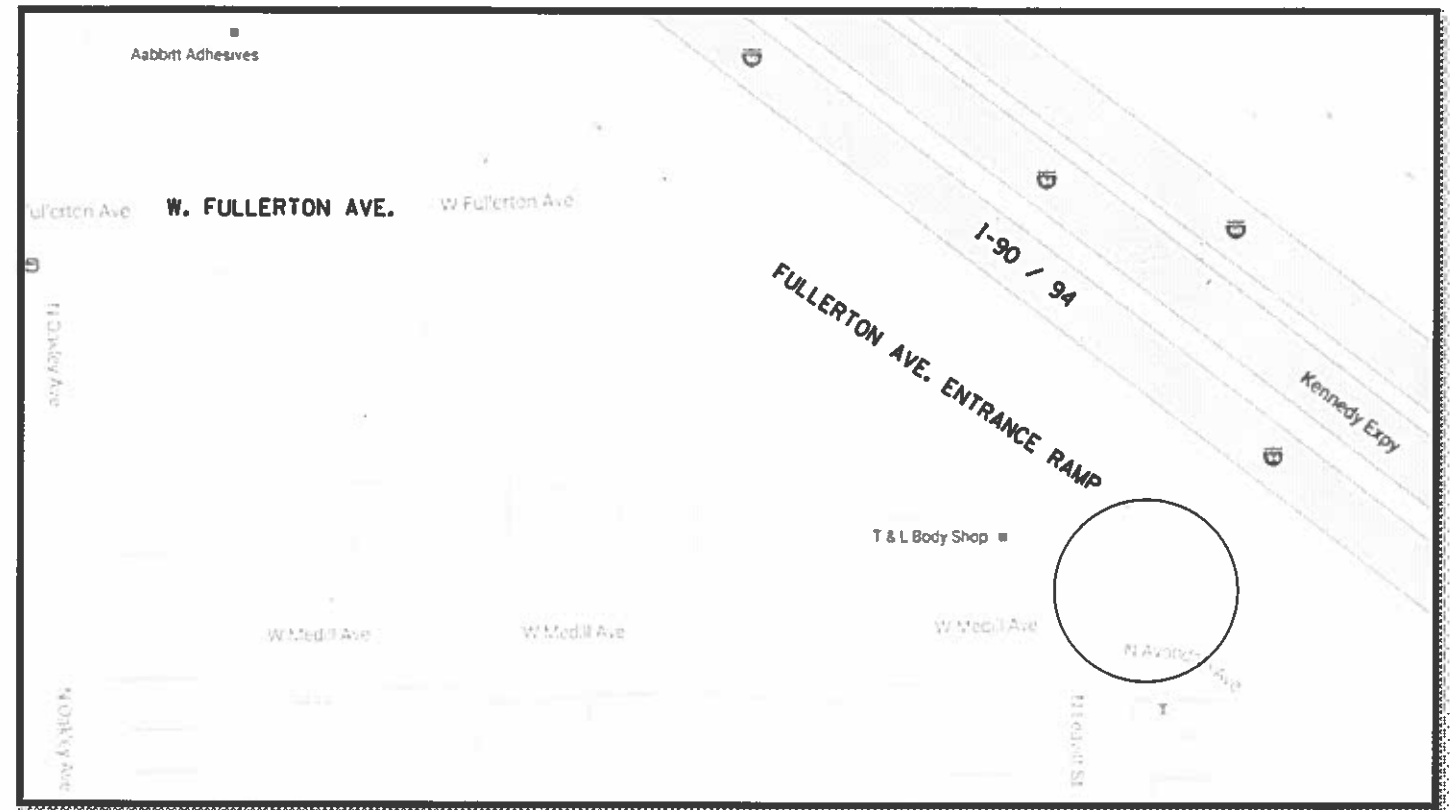


FILE NAME	USER NAME	DESIGNED	REVISED	STATE OF ILLINOIS DEPARTMENT OF TRANSPORTATION	IDOT EISENHOWER MAINTENANCE YARD, LARAMIE AVE. & FLOURNOY ST. CHICAGO, COOK COUNTY	F.A. RTE.	SECTION	COUNTY	TOTAL SHEETS	SHEET NO.	
PL	PROJECT	DATE	DATE			VAR.	2016-0115	VARIOUS	14	14	
SCALE: NTS	SHEET	OF	SHEETS			STA.	TO STA.	CONTRACT NO. 62C29		ILLINOIS FED. AID PROJECT	
PL	PROJECT	DATE	DATE			STA.	TO STA.				

SCHEDULE OF LANDSCAPE ITEMS

<u>DESCRIPTION</u>	<u>TOTAL QUANTITY / UNIT</u>
ULMUS AMERICANA 'PRINCETON', 2" CALIPER	3 EACH

GENERAL LOCATION MAP



NOTE: THE PLANT LOCATION WILL BE PLANTED ON THE WEST SIDE OF THE RAMP BY THE GUARDRAIL.

FILE NAME =	USER NAME = del-osaroms	DESIGNED =	REVISED =	STATE OF ILLINOIS DEPARTMENT OF TRANSPORTATION	I-90 EAST (KENNEDY EXPWY), FULLERTON AVE. ENTRANCE RAMP CHICAGO, COOK COUNTY	F.A. RTE. =	SECTION	COUNTY	TOTAL SHEETS	SHEET NO.
Default	Projects 1007 Offices District 1 Projects 010	DRAWN =	REVISED =			VAR.	2016-11LS	VARIOUS	15	15
	PLOT SCALE = 102.0567 in.	CHECKED =	REVISED =			CONTRACT NO. 62C29				
	PLOT DATE = 8/8/2016	DATE	REVISED =			ILLINOIS FED. AID PROJECT				

SCHEDULE OF LANDSCAPE ITEMS

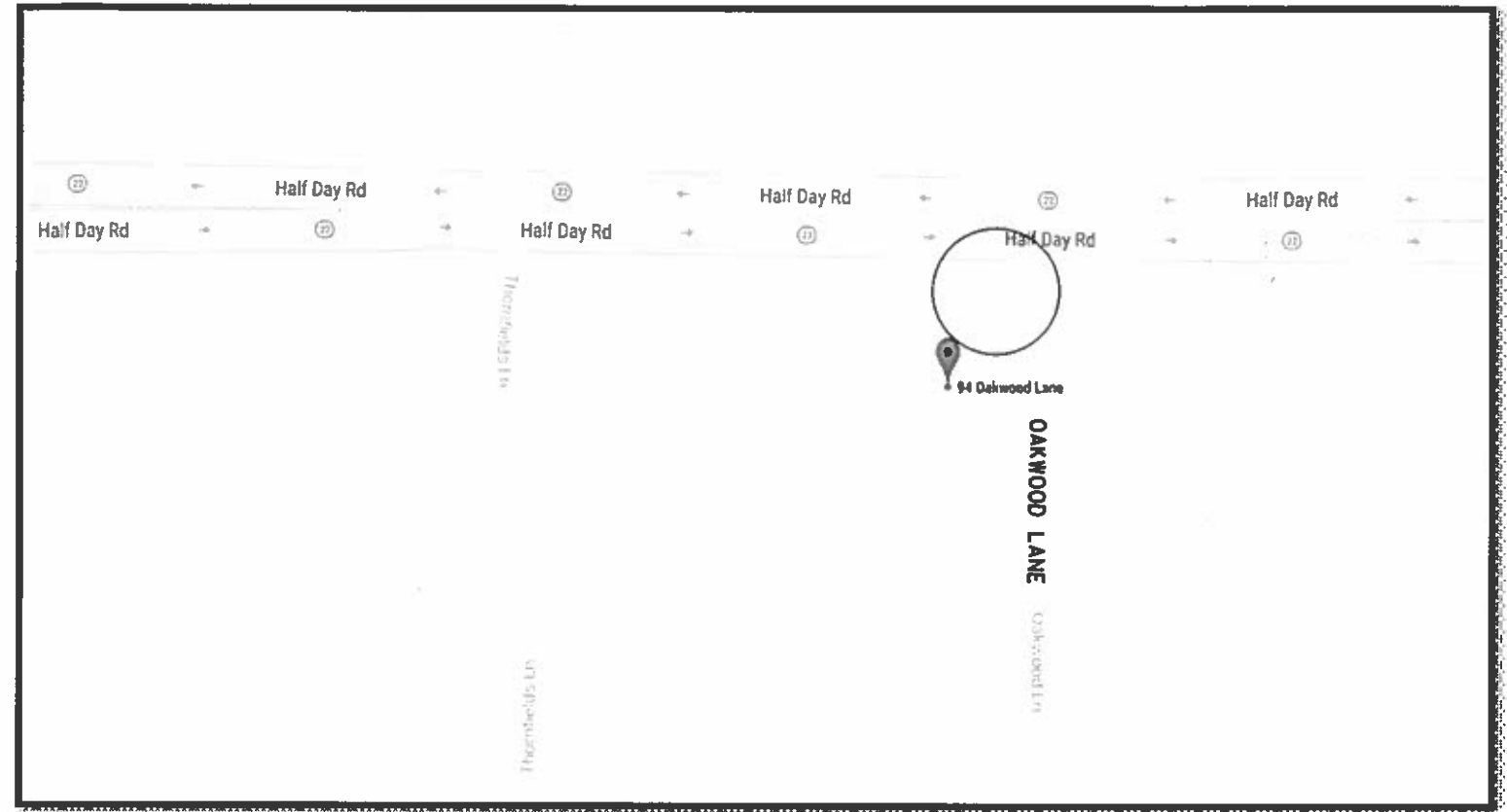
GENERAL LOCATION MAP

DESCRIPTION

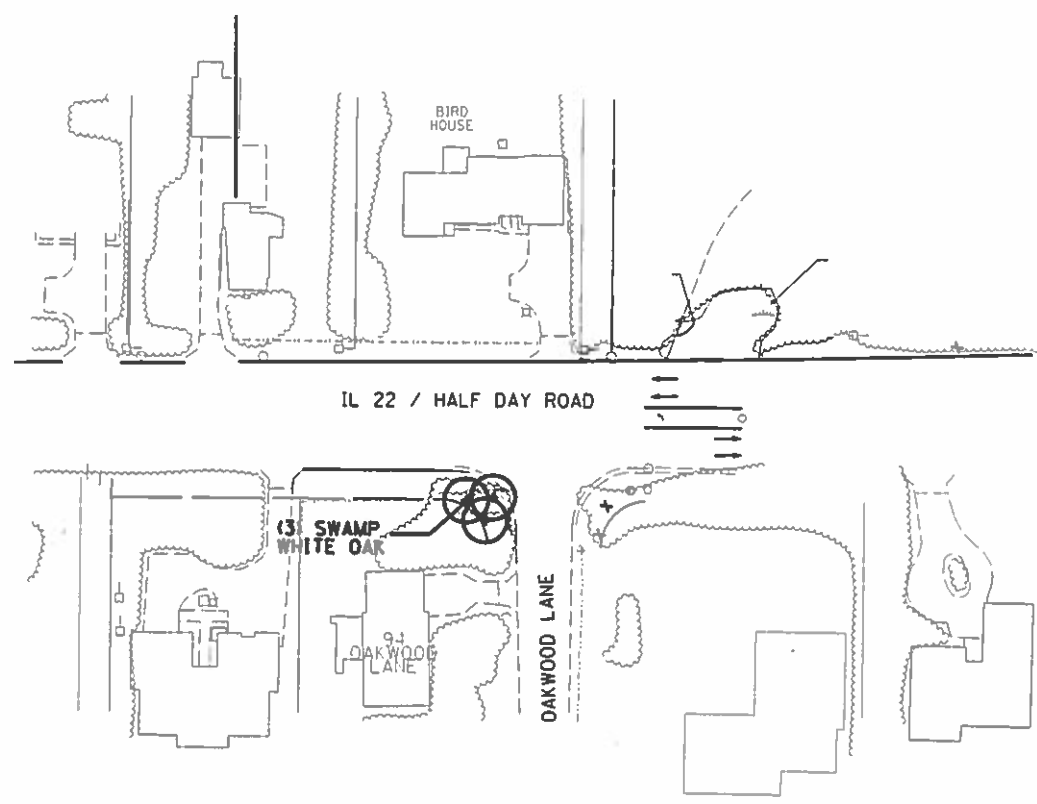
TOTAL QUANTITY / UNIT

QUERCUS BICOLOR, 2" CALIPER

3 EACH



FILE NAME p:\11\084EBID\INTEG\illinois.gov\p\1001\Do	USER NAME delrosario	DESIGNED -	REVISED -	STATE OF ILLINOIS DEPARTMENT OF TRANSPORTATION	CORNER OF OAKWOOD DRIVE & IL 22, IN FRONT OF 94 OAKWOOD LANE LINCOLNSHIRE, LAKE COUNTY	F.A. RTE.	SECTION	COUNTY	TOTAL SHEETS	SHEET NO.	
PROJECT Default	PROJECT Default	DRAWN -	REVISED -			VAR.	2016-11LS	VARIOUS	16		
PLOT SCALE 102.0567' / in.	CHECKED -	REVISED -	REVISED -			SCALE: _____ SHEET _____ OF _____ SHEETS STA. _____ TO STA. _____		CONTRACT NO. 62C29			
PLOT DATE 8/8/2016	DATE -	REVISED -	REVISED -			ILLINOIS FED. AID PROJECT					

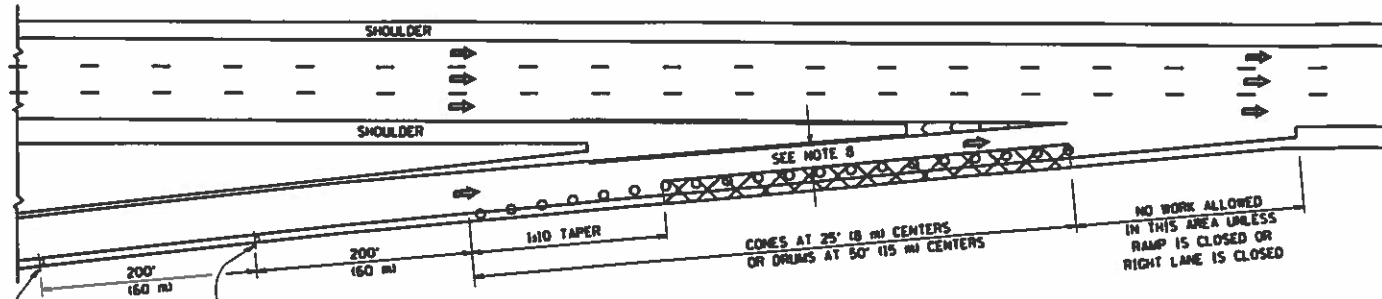


FILE NAME *	USER NAME *	DESIGNED -	REVISED -	STATE OF ILLINOIS DEPARTMENT OF TRANSPORTATION	CORNER OF OAKWOOD DRIVE & IL 22, IN FRONT OF 94 OAKWOOD LANE LINCOLNSHIRE, LAKE COUNTY	F.A. RTE.	SECTION	COUNTY	TOTAL SHEETS	SHEET NO.		
pw\1\11084EBID\HTEG\Illinois.gov\PWIDOT\O	umants\DDOT Offices\District 1\Projects\DI0	ORAM	REVISED			VAR.	2016-0115	VARIOUS	---	17		
	PLOT SCALE * 102.0567 1/ in.	CHECKED -	REVISED -			SCALE: NTS		SHEET		OF	SHEETS	STA. TO STA.
Default	PLOT DATE * 8/8/2016	DATE -	REVISED -			ILLINOIS FED. AID PROJECT						
						CONTRACT NO. 62C29						

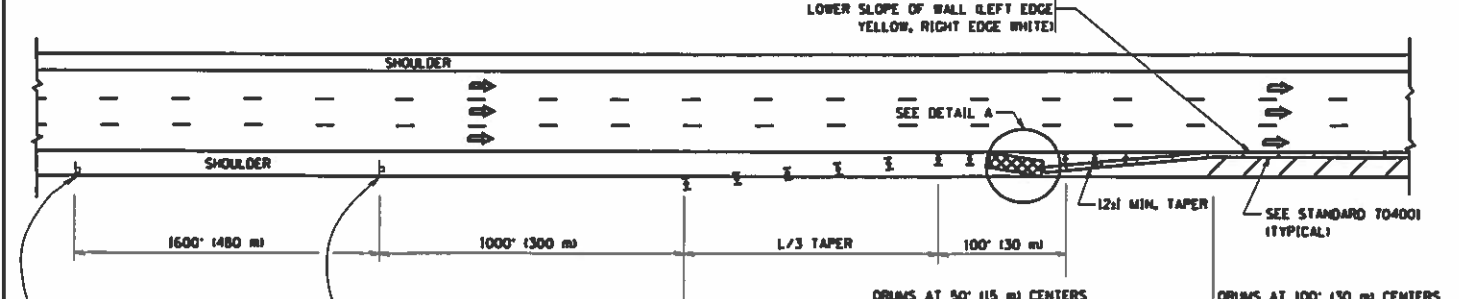
PARTIAL RAMP CLOSURE DETAILS

SHOULDER CLOSURE DETAILS

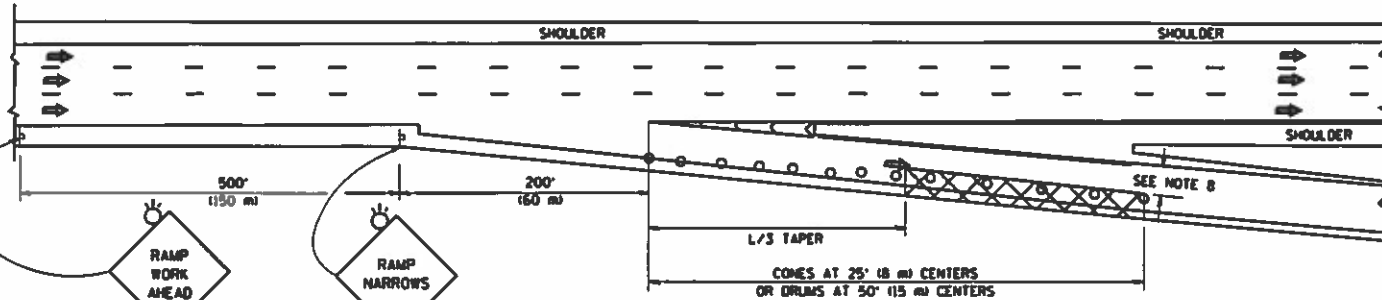
REFLECTIVE 6 (150) EDGE LINE ON LOWER SLOPE OF WALL (LEFT EDGE YELLOW, RIGHT EDGE WHITE)



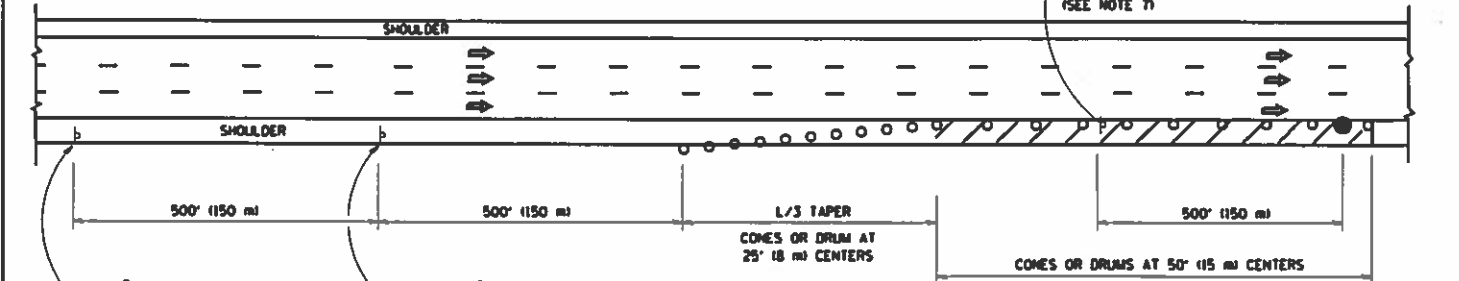
TYPICAL ENTRANCE RAMP



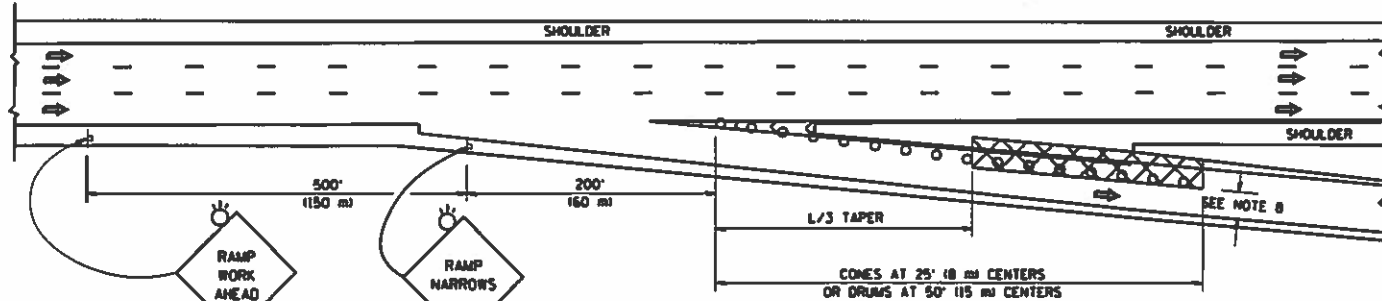
PERMANENT SHOULDER CLOSURE



TYPICAL EXIT RAMP



DAYTIME SHOULDER CLOSURE



TYPICAL EXIT RAMP

THIS DETAIL IS USED WHERE:
1. VEHICLES, EQUIPMENT, WORKERS OR THEIR ACTIVITIES ENCRANCH IN AN AREA CLOSER THAN 15' (4.5 m) TO THE EDGE OF PAVEMENT FOR A PERIOD IN EXCESS OF 15 MINUTES.



DETAIL "A" IMPACT ATTENUATOR, TEMPORARY (SEE NOTE 5)

ALL DIMENSIONS ARE IN INCHES (MILLIMETERS) UNLESS OTHERWISE SHOWN.

SYMBOLS

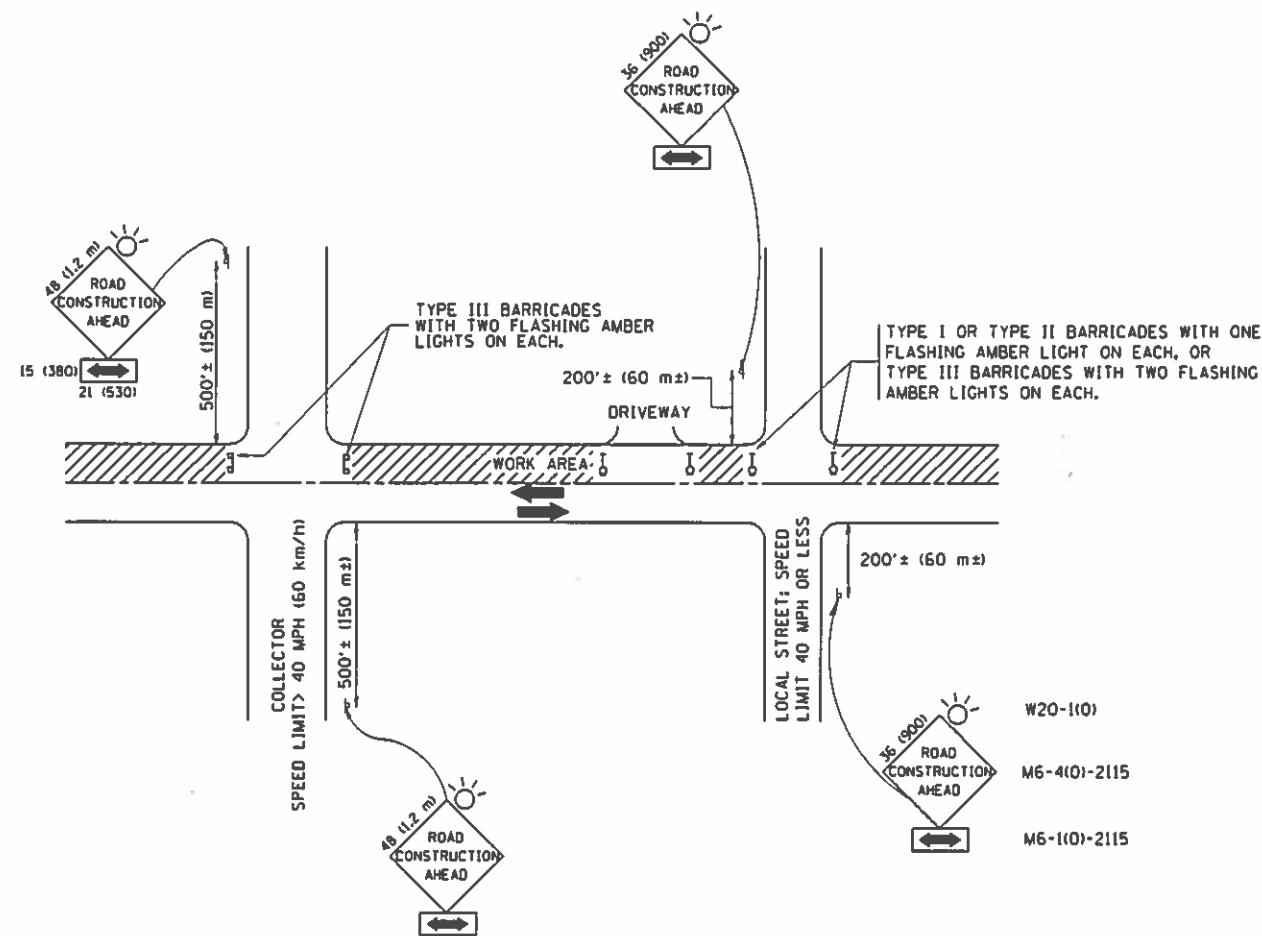
- ACTIVE WORK AREA
- SIGN ON PORTABLE OR PERMANENT SUPPORT
- FLAGGER WITH CONTROL SIGN
- TYPE II BARRICADE OR DRUM WITH STEADY BURN MONO-DIRECTIONAL LIGHT
- CONE, DRUM OR BARRICADE
- IMPACT ATTENUATOR OF TYPE AND TEST LEVEL SPECIFIED

GENERAL NOTES

1. THE "L" DISTANCE EQUALS:
SPEED LIMIT FORMULAS
45 mph (80 km/h) OR GREATER: METRIC ENGLISH
 $L = 0.65(W)(S)$ $L = (W)(S)$
W = WIDTH OF OFFSET IN FEET (METERS)
S = NORMAL POSTED SPEED MPH (KM/H)
2. PLASTIC DRUMS WITH HIGH PERFORMANCE REFLECTIVE SHEETING AND STEADY BURNING LIGHTS ARE REQUIRED FOR ALL NIGHTTIME CLOSURES.
3. ALL SIGNS SHALL BE POST MOUNTED IF THE CLOSURE TIME EXCEEDS FOUR DAYS.
4. FLASHING LIGHTS SHALL BE USED DURING THE HOURS OF DARKNESS AND SHALL BE INSTALLED ABOVE THE FIRST TWO SETS OF SIGNS.

5. THE IMPACT ATTENUATOR, TEMPORARY IS NOT REQUIRED WHEN THE TEMPORARY CONCRETE BARRIER WALL IS PROTECTED BY OR IS TIED INTO THE EXISTING GUARDRAIL. IF OFFSET IS LESS THAN 5 FEET USE NARROW USE TYPE DEVICE TO MEET NCHRP 350/MASH.
6. AUTHORIZATION FROM THE DISTRICT'S BUREAU OF TRAFFIC IS REQUIRED FOR ALL FREEWAY CLOSURES.
7. THE FLAGGER AND FLAGGER SIGN ARE REQUIRED AT THE ABOVE WORK SITES WHEN:
 - a. FOUR OR MORE WORK VEHICLES ENTER THE TRAFFIC LANES IN A ONE HOUR PERIOD.
 - b. THE WORK ACTIVITY REQUIRES FREQUENT ENCROACHMENT INTO THE LANE OPEN TO TRAFFIC.
 THE FLAGGER SHALL BE STATIONED APPROXIMATELY 100' (30 m) TO 200' (60 m) IN ADVANCE OF THE WORKERS.
8. 12' MIN. WIDTH TANGENT SECTION
16' MIN. WIDTH CURVE SECTION.

FILE NAME <small>ct:\pwwork\p10101\1050\101010115\1017.dwg</small>	USER NAME <small>1050</small>	DESIGNED <small>-</small>	REVISED <small>- J.A.F. 12-06</small>	STATE OF ILLINOIS DEPARTMENT OF TRANSPORTATION	TRAFFIC CONTROL DETAILS FOR FREEWAY SHOULDER CLOSURES AND PARTIAL RAMP CLOSURES	F.A. RTE. VAR	SECTION 2016-011-LS	COUNTY VARIABLE	TOTAL SHEETS 18	
PLOT SCALE <small>1:100,000</small>					SCALE: NONE	SHEET NO. 1 OF 1 SHEETS	STA.	TO STA.	CONTRACT NO. 62C 2.9	FED. ROAD DIST. NO. 1 (ILLINOIS) FED. AID PROJECT
PLOT DATE <small>4/17/2014</small>					DATE <small>11-96</small>					
DRAWN <small>- D.W.S.</small>					REVISED <small>- S.P.B. 01-07</small>					
CHECKED <small>-</small>				REVISED <small>- S.P.B. 12-09</small>						
REVISIONS				REVISED <small>- M.D. 06-13</small>						



TRAFFIC CONTROL AND PROTECTION FOR SIDE ROADS, INTERSECTIONS, AND DRIVEWAYS

NOTES:

A. FOR NO LANE RESTRICTION ON THE SIDE ROAD OR DRIVEWAYS

1. SIDE ROAD WITH A SPEED LIMIT OF 40 MPH (60 km/h) OR LESS AS SHOWN ON THE DRAWING AND AS DIRECTED BY THE ENGINEER:

a) ONE ROAD CONSTRUCTION AHEAD SIGN 36 x 36 (900x900) WITH A FLASHER AND FLAG MOUNTED ON IT APPROXIMATELY 200' (60 m) IN ADVANCE OF THE MAIN ROUTE.

b) THE CLOSED PORTION OF THE MAIN ROUTE SHALL BE PROTECTED BY BLOCKING WITH TYPE I, TYPE II OR TYPE III BARRICADES, 1/3 OF THE CROSS SECTION OF THE CLOSED PORTION.

2. SIDE ROAD WITH A SPEED LIMIT GREATER THAN 40 MPH (60 km/h) AS SHOWN ON THE DRAWING AND AS DIRECTED BY THE ENGINEER:

a) ONE ROAD CONSTRUCTION AHEAD SIGN 48 x 48 (1.2 m x 1.2 m) WITH A FLASHER MOUNTED ON IT APPROXIMATELY 500' (150 m) IN ADVANCE OF THE MAIN ROUTE.

b) THE CLOSED PORTION OF THE MAIN ROUTE SHALL BE PROTECTED BY BLOCKING WITH TYPE III BARRICADES, 1/2 OF THE CROSS SECTION OF THE CLOSED PORTION.

3. WHEN THE SIDE ROAD LIES BETWEEN THE BEGINNING OF THE MAINLINE SIGNING AND THE WORK ZONE, A SINGLE HEADED ARROW (M6-1) SHALL BE USED IN LIEU OF THE DOUBLE HEADED ARROW (M6-4).

B. FOR A LANE CLOSURE ON A SIDE ROAD OR DRIVEWAY:

USE APPLICABLE PORTIONS OF THE TYPICAL APPLICATION OF TRAFFIC CONTROL DEVICES (STD. 701501, STD. 701606 OR THE APPROPRIATE STANDARD). THE SPACING OF SIGNS AND BARRICADES SHALL BE ADJUSTED FOR FIELD CONDITIONS AS DIRECTED BY THE ENGINEER. THE DIRECTIONAL ARROW SHALL BE COVERED OR REMOVED WHEN NO LONGER CONSISTENT WITH THE SIDE ROAD LANE CLOSURE.

C. ADVANCE WARNING SIGNS ARE TO BE OMITTED ON DRIVEWAY UNLESS OTHERWISE NOTED.

D. THE TRAFFIC CONTROL AND PROTECTION FOR SIDE ROADS, INTERSECTIONS, AND DRIVEWAYS SHALL BE INCIDENTAL TO THE COST OF SPECIFIED TRAFFIC CONTROL STANDARDS OR ITEMS.

All dimensions are in millimeters (inches) unless otherwise shown.

FILE NAME = W:\distatd\22+34\td\td.dgn	USER NAME = geglertobt	DESIGNED = LHA	REVISED = J. OBERLE 10-18-95
		DRAWN =	REVISED = A. HOUSEH 03-06-96
	PLOT SCALE = 50,000 / IN.	CHECKED =	REVISED = A. HOUSEH 10-15-96
	PLOT DATE = 1/4/2008	DATE = 06-89	REVISED = T. RAMMACHER 01-06-00

STATE OF ILLINOIS
DEPARTMENT OF TRANSPORTATION

TRAFFIC CONTROL AND PROTECTION FOR SIDE ROADS, INTERSECTIONS, AND DRIVEWAYS		F.A. - RTE.	SECTION	COUNTY	TOTAL SHEETS	SHEET NO.
SCALE: NONE		VAR	2016-011-LS	VARIOUS	19	19
SHEET NO. 1 OF 1 SHEETS		TC-10		CONTRACT NO. 02C29		
STA. TO STA.		FED. ROAD DIST. NO. 1 ILLINOIS FED. AID PROJECT				