

STATE OF ILLINOIS
DEPARTMENT OF TRANSPORTATION

F.A. RTE.	SECTION	COUNTY	TOTAL SHEETS	SHEET NO.
VAR	D3 BRIDGE DECK SEALING	VARIOUS	11	1
		ILLINOIS	CONTRACT NO. 66F76	

INDEX OF SHEETS

- 1 COVER SHEET
- 2 GENERAL NOTES
- 3 SUMMARY OF QUANTITIES
- 4 - 7 BRIDGE SEALING SCHEDULE
- 8 - 10 LOCATION MAPS
- 11 SEALING DETAILS

STANDARDS

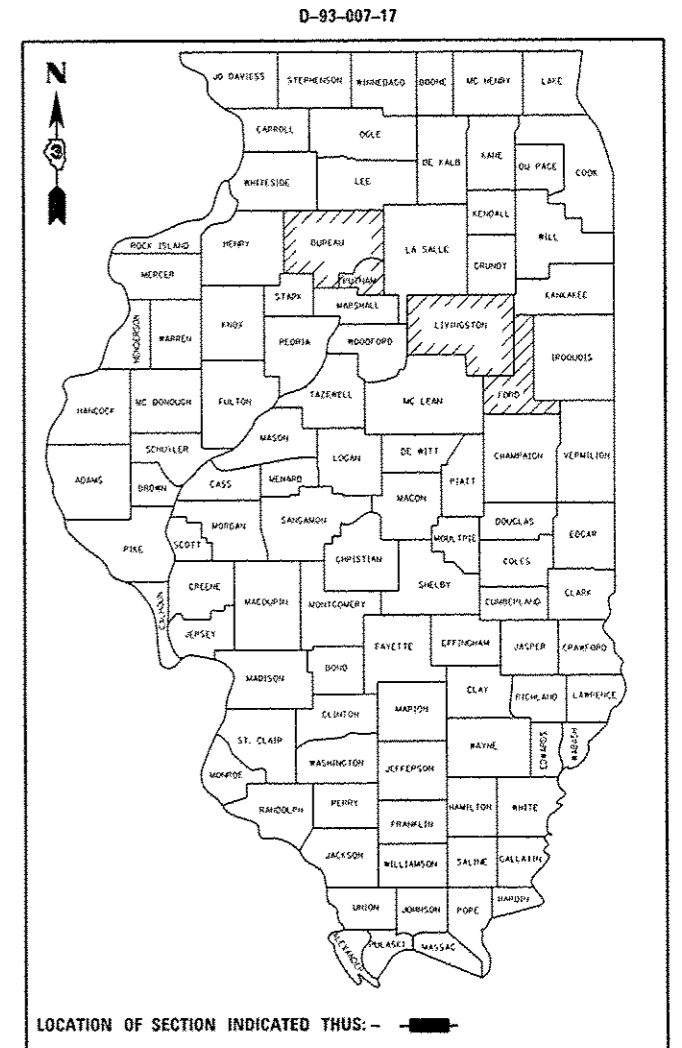
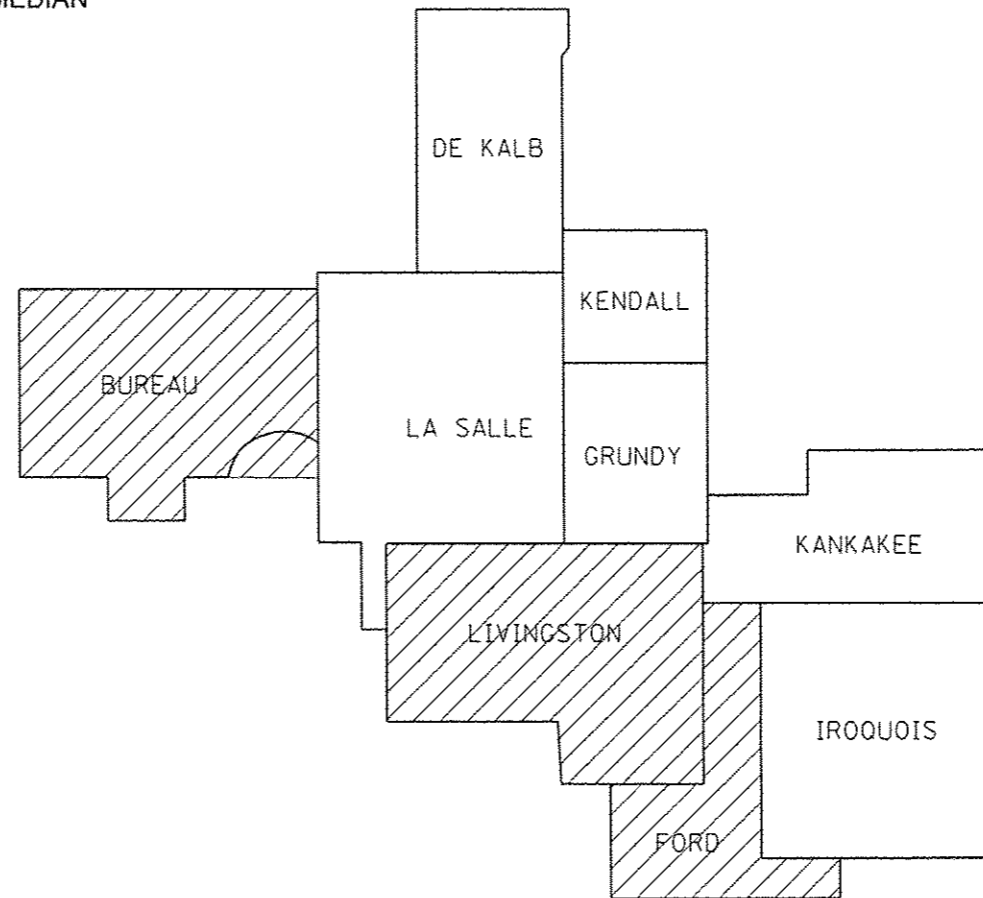
- 000001-06 STANDARD SYMBOLS, ABBREVIATIONS AND PATTERNS
- 701201-04 LANE CLOSURE, 2L, 2W, DAY ONLY, FOR SPEEDS ≥ 45 MPH
- 701400-08 APPROACH TO LANE CLOSURE, FREEWAY/EXPRESSWAY
- 701406-10 LANE CLOSURE, FREEWAY/EXPRESSWAY, DAY OPERATIONS ONLY
- 701411-09 LANE CLOSURE, MULTILANE, AT ENTRANCE OR EXIT RAMP FOR SPEEDS ≥ 45 MPH
- 701428-01 TRAFFIC CONTROL SETUP AND REMOVAL FREEWAY/EXPRESSWAY
- 701456-03 PARTIAL EXIT RAMP CLOSURE FREEWAY/EXPRESSWAY
- 701501-06 URBAN LANE CLOSURE, 2L, 2W, UNDIVIDED
- 701601-09 URBAN LANE CLOSURE, MULTILANE, 1W OR 2W WITH NONTRAVERSABLE MEDIAN
- 701606-10 URBAN LANE CLOSURE, MULTILANE, 2W WITH MOUNTABLE MEDIAN
- 701901-05 TRAFFIC CONTROL DEVICES

**PROPOSED
HIGHWAY PLANS**

**VARIOUS ROUTES
SECTION D3 BRIDGE DECK SEALING FY 2017**

**BRIDGE DECK SEALING
VARIOUS COUNTIES**

C-93-001-17



J.U.L.I.E.
JOINT UTILITY LOCATION INFORMATION FOR EXCAVATION
1-800-892-0123
OR 811

PROJECT ENGINEER: DAVE ALEXANDER, P.E.
UNIT CHIEF: BRAD DUNCAN, P.E.
DISTRICT 3 NO. (815) 434-6131
CONTRACT NO. 66F76

STATE OF ILLINOIS
DEPARTMENT OF TRANSPORTATION

SUBMITTED 8-16-2016
K. Marshall
REGIONAL ENGINEER

Sept 30 2016
David M. Addis, P.E.
ENGINEER OF DESIGN AND ENVIRONMENT

Sept 30 2016
Michelle Allen
DIRECTOR OF PROGRAM DEVELOPMENT

PRINTED BY THE AUTHORITY
OF THE STATE OF ILLINOIS

GENERAL NOTES

ANY REFERENCE TO A STANDARD IN THESE PLANS SHALL BE INTERPRETED TO MEAN THE EDITION AS INDICATED BY THE SUBNUMBER SHOWN IN THE LIST OF STANDARDS OR THE COPY INCLUDED IN THESE PLANS.

THE ENGINEER WILL BE THE SOLE JUDGE CONCERNING CURING TIME FOR THE SEALER.

STATE OF ILLINOIS
DEPARTMENT OF TRANSPORTATION
DISTRICT THREE
AS BUILT INFORMATION

SUPERVISING CONSTRUCTION FIELD ENGINEER

RESIDENT ENGINEER / TECHNICIAN

START & END DATES
OF CONSTRUCTION:

INSPECTORS:

STATE OF ILLINOIS
DEPARTMENT OF TRANSPORTATION
DISTRICT THREE

PREPARED BY: *Tom Beaulieu*
DISTRICT STUDIES & PLANS ENGINEER

DATE: August 16, 2016

EXAMINED BY: *[Signature]*
DISTRICT CONSTRUCTION ENGINEER

[Signature]
DISTRICT MATERIALS ENGINEER

[Signature]
DISTRICT OPERATIONS ENGINEER

STATE OF ILLINOIS
DEPARTMENT OF TRANSPORTATION

GENERAL NOTES

FILE NAME *	USER NAME * duncanbd	DESIGNED -	REVISED -
c:\pwworksp\p1dat\duncanbd\0493882\036676-shit-cover.dgn		DRAWN -	REVISED -
MODEL NAME *	PLOT SCALE = 100.0000 / 1 in.	CHECKED -	REVISED -
	PLOT DATE = 8/12/2016	DATE -	REVISED -

SCALE:	SHEET	OF	SHEETS	STA.	TO STA.
--------	-------	----	--------	------	---------

F.A. RTE.	SECTION	COUNTY	TOTAL SHEETS	SHEET NO.
VAR	D3 BRIDGE DECK SEALING	VARIOUS	11	2
ILLINOIS FED. AID PROJECT			CONTRACT NO. 66F76	

8105 21 00A

CONSTR. CODE
100% STATE
BRIDGE
0014

CODE NO.	ITEM	UNIT	TOTAL QUANTITY	CONSTR. CODE
67100100	MOBILIZATION	LSUM	1	1
70100420	TRAFFIC CONTROL AND PROTECTION, STANDARD 701411	EACH	8	8
70100450	TRAFFIC CONTROL AND PROTECTION, STANDARD 701201	LSUM	1	1
70100700	TRAFFIC CONTROL AND PROTECTION, STANDARD 701406	LSUM	1	1
70100825	TRAFFIC CONTROL AND PROTECTION, STANDARD 701456	LSUM	1	1
70102620	TRAFFIC CONTROL AND PROTECTION, STANDARD 701501	LSUM	1	1
70102625	TRAFFIC CONTROL AND PROTECTION, STANDARD 701606	LSUM	1	1
70102630	TRAFFIC CONTROL AND PROTECTION, STANDARD 701601	LSUM	1	1
X5870015	BRIDGE DECK CONCRETE SEALER	SD FT	1320678	1320678
X7010410	SPEED DISPLAY TRAILER	CAL MO	2	2

10

*03 BRIDGE DECK SEALING FY 2017

CONCRETE SEALER									
STRUCTURE NUMBER	FACILITY CARRIED	APPROXIMATE LOCATION	FEATURE CROSSED	DECK WIDTH	PARAPET SURFACE	MEDIAN SURFACE	DECK LENGTH	SEAL AREA	TRAFFIC CONTROL AND PROTECTION STANDARD
				FEET	FEET	FEET	FEET	SQ FT	
BUREAU INTERSTATE									
006-0001	I-80 EASTBOUND	1.04 E/HENRY CO LN	KING CREEK	40.2	7.4		98.2	4,674	701406
006-0002	I-80 WESTBOUND	1.05 E/HENRY CO LN	KING CREEK	40.2	7.4		98.2	4,674	701406
006-0003	I-80 EASTBOUND	1.51 E/HENRY CO LN	BARBARA DITCH	40.2	7.4		73.5	3,499	701406
006-0004	I-80 WESTBOUND	1.52 E/HENRY CO LN	BARBARA DITCH	40.2	7.4		73.5	3,499	701406
006-0005	I-80 EASTBOUND	3.44 E/HENRY CO LN	ABBOTT DITCH	40.2	7.4		178	8,473	701406
006-0006	I-80 WESTBOUND	3.45 E/HENRY CO LN	ABBOTT DITCH	40.2	7.4		178	8,473	701406
006-0007	I-80 EASTBOUND	3.81 E/HENRY CO LN	COAL CREEK	40	7.6		176	8,378	701406
006-0008	I-80 WESTBOUND	3.82 E/HENRY CO LN	COAL CREEK	40	7.6		176	8,378	701406
006-0009	I-80 EASTBOUND	1.0 MI. W. OF IL 40	DRAINAGE DITCH	40.5	7.6		136	6,542	701406
006-0010	I-80 WESTBOUND	1.0 MI. W. OF IL 40	DRAINAGE DITCH	40.5	7.6		136	6,542	701406
006-0016	I-80 WESTBOUND	2 MI N WYANET	WEST BUREAU CREEK	34	7.4		43	1,780	701406
006-0017	I-80 EASTBOUND	2 MI N WYANET	WEST BUREAU CREEK	34	7.4		94.8	3,925	701406
006-0020	I-80 EASTBOUND	2.8 MI W O I-180	US 34	40	7.6		138.6	6,597	701406
006-0021	I-80 WESTBOUND	2.8 MI W O I-180	US 34	40	7.6		138.6	6,597	701406
006-0038	I-180 NORTHBOUND	4 MI E. OF PRINCETON	I-80	26.5	4.8		273.2	8,551	701456 *
006-0039	I-180 SOUTHBOUND	4 MI E. OF PRINCETON	I-80	26.5	4.8		272.2	8,520	701456 *
006-0041	I-180 SOUTHBOUND	3.4 MI S JCT FAI 80	EAST BUREAU CREEK	39	5		150.1	6,604	701406 *
006-0042	I-180 NORTHBOUND	3.4 MI S JCT FAI 80	EAST BUREAU CREEK	39	5		147.5	6,490	701406 *
006-0043	I-180 NORTHBOUND	1.1 MI N ILL 26	BRUSH CREEK	39	5		191	8,404	701406 *
006-0044	I-180 SOUTHBOUND	1.1 MI N ILL 26	BRUSH CREEK	39	5		191	8,404	701406 *
006-0045	I-180 SOUTHBOUND	2 MI NW BUREAU JCT	ILL 26	39	5		212.5	9,350	701406, 701411 *
006-0046	I-180 NORTHBOUND	2 MI NW BUREAU JCT	ILL 26	39	5		212.5	9,350	701406, 701411 *
006-0047	I-180 SOUTHBOUND	0.5 MI S JCT ILL 26	EAST BUREAU CREEK	39	5		211.1	9,288	701406, 701411 SB *
006-0048	I-180 NORTHBOUND	0.5 MI S JCT ILL 26	EAST BUREAU CREEK	39	5		211.1	9,288	701406 *
006-0049	I-180 SOUTHBOUND	0.7 MI S ILL 26	IAIS RR ,I & M CANAL	39	5		716.8	31,539	701406 *
006-0050	I-180 NORTHBOUND	0.7 MI S ILL 26	IAIS RR, I & M CANAL	39	5		716.8	31,539	701406 *
006-0051	I-180 SOUTHBOUND	1.2 M S JCT ILL 26	BUREAU CREEK	39	5		371.5	16,346	701406 *
006-0052	I-180 NORTHBOUND	1.2 MI S JCT ILL 26	BUREAU CREEK	39	5		371.5	16,346	701406 *
006-0053	I-180 SOUTHBOUND	1.4 MI S JCT ILL 26	BOTTOM RD FAS 246	39	5		176.3	7,757	701406 *
006-0054	I-180 NORTHBOUND	1.4 MI S JCT ILL 26	BOTTOM RD FAS 246	39	5		176.3	7,757	701406 *
006-0055	I-180 EASTBOUND	3 MI W HENNEPIN	FAP 318 NB	39	5		328.4	14,450	701406 *
006-0056	I-180 EASTBOUND	3 MI W HENNEPIN	I-180 RMP 10.01	39	5		234	10,296	701406 *
006-0057	I-180 EASTBOUND	2 MI SW BUREAU JCT.	IL 29(SBI29A)&IAIS RR	63	5		393	26,724	701406, 701411 *
006-0058	I-180 WESTBOUND	2 MI. SW BUREAU JCT.	IL 29(SBI29A)&IAIS RR	69.7	5		383.8	28,670	701406, 701411 *
006-0059	I-180 WESTBOUND	1.5 MI W HENNEPIN	ILL 26 & BUREAU CRK.	39	5		401	17,644	701406, 701411 *
006-0060	I-180 EASTBOUND	1.5 MI W HENNEPIN	ILL 26 & BUREAU CRK.	39	5		401	17,644	701406 *
006-0151	I-80 EASTBOUND	2 MI. W. OF IL 26	BUREAU CREEK	40	7.4		292	13,841	701406
006-0152	I-80 WESTBOUND	2 MI. W. OF IL 26	BUREAU CREEK	40	7.4		292	13,841	701406
006-0165	I-80 EASTBOUND	1.7 MI E JCT ILL 89	SPRING CREEK	40	7.6		170	8,092	701406
006-0166	I-80 WESTBOUND	1.7 MI E JCT ILL 89	SPRING CREEK	40	7.6		170	8,092	701406
006-0167	I-80 EASTBOUND	1.9 MI E JCT ILL 89	BN RR	40	7.6		154.5	7,354	701406
006-0168	I-80 WESTBOUND	1.9 MI E JCT ILL 89	BN RR	40	7.6		154.5	7,354	701406
006-0170	I-80 EASTBOUND	4.6 MI E JCT FAI 180--MP 65.6	CREEK & TR 352	40	7.6		310.1	14,761	701406
006-0171	I-80 WESTBOUND	4.6 MI E JCT FAI 180--MP 65.6	CREEK & TR 352	40	7.6		356.9	16,988	701406
006-0172	I-80 EASTBOUND	1.2 MI E JCT FAI 180--MP 62.2	E. BUREAU CREEK	40.3	7.6		172.1	8,244	701406
006-0173	I-80 WESTBOUND	1.2 MI E JCT FAI 180--MP 62.2	E. BUREAU CREEK	40.3	7.6		172.1	8,244	701406
006-0174	I-80 EASTBOUND	1.8 MI W ILL 89--MP 68.3	NEGRO CREEK	40.8	7.6		221	10,696	701406
006-0175	I-80 WESTBOUND	1.8 MI W ILL 89--MP 68.3	NEGRO CREEK	40.8	7.6		221	10,696	701406
006-0176	I-80 EASTBOUND	2.6 MI W OF I-180	BN RR	42.4	7.6		275.9	13,795	701406
006-0177	I-80 WESTBOUND	2.6 MI W OF I-180	BN RR	42.4	7.6		275.9	13,795	701406
006-0184	I-80 EASTBOUND	0.9 MI W OF IL 40	HENNEPIN CANAL	41	7.6		185.2	9,001	701406
006-0185	I-80 WESTBOUND	0.9 MI W OF IL 40	HENNEPIN CANAL	41	7.6		185.2	9,001	701406

* STRUCTURE HAS EXISTING PCC OVERLAY, ADDITIONAL DRYING TIME BY BE REQUIRED

FILE NAME =	USER NAME = duncanbd	DESIGNED -	REVISED -	STATE OF ILLINOIS DEPARTMENT OF TRANSPORTATION	SCHEDULES OF QUANTITIES BUREAU & PUTNAM COUNTIES			F.A. RTE.	SECTION	COUNTY	TOTAL SHEETS	SHEET NO.	
p:\11\084EBIDINTEG.illinois.gov\PIWIDOT\Documents\DOT Offices\District 3\Projects\0366\DRAWING\0366F76-shr-schedule.dgn		REVISOR -	REVISOR -					VAR	*		11	4	
Default	PLOT SCALE = 100.0000' / in.	CHECKED -	REVISOR -		SCALE:			SHEET 1	OF 4 SHEETS	STA.	TO STA.	ILLINOIS FED. AID PROJECT	
	PLOT DATE = 8/16/2016	DATE -	REVISOR -									CONTRACT NO. 66F76	

*03 BRIDGE DECK SEALING FY 2017

CONCRETE SEALER									
STRUCTURE NUMBER	FACILITY CARRIED	APPROXIMATE LOCATION	FEATURE CROSSED	DECK	PARAPET	MEDIAN	DECK	SEAL	TRAFFIC CONTROL AND PROTECTION STANDARD
				WIDTH	SURFACE	SURFACE	LENGTH	AREA	
				FEET	FEET	FEET	FEET	SQ FT	
BUREAU									
NON-INTERSTATE									
006-0083	ILL ROUTE 29 AND 26	0.3 MI N JCT ILL 26	BUREAU CR OVERFLOW	34	7.4		308	12,751	701201
006-0084	ILL ROUTE 29	0.1 MI S JCT ILL 26	BUREAU CREEK	35.9	7.4		218	9,439	701201
006-0085	FAP 318 NB	3 MI W OF HENNEPIN	I-180 EX RMP 1001	39	5		372.7	16,399	701406*
006-0086	ILL 40	3.1 MI S JCT ILL 92	WALNUT SPECIAL DITCH	40	7.4		42.8	2,029	701201
006-0090	ILL 40	0.4 MI S JCT I-80	I&M CANAL	32	7.4		173.8	6,848	701201
006-0096	ILL 92	1.0 MI E ILL 172	I&M FEEDER CANAL	30	1.7		89.5	2,837	701201
006-0097	ILL 92	1.4 MI W JCT ILL 40	GREEN RIVER	32	7.4		170	6,698	701201
006-0101	ILL 92	.7 MI W VAN ORIN	BR MASTERS CR	32	7.4		60.3	2,376	701201
006-0116	FAS 244/BACKBONE RD	1.8 MI W JCT ILL 26	I-80	28	7.6		208.5	7,423	701201
006-0123	TR 148	3.0 MI. E. OF IL 40	I-80	24	1.83		216.7	5,597	701201
006-0124	TR 188	4.3 MI W JCT ILL 26	I-80	24	1.83		235	6,070	701201
006-0125	TR 241	0.9 MI S JCT FAI 80	I-180	30.5	5		277.6	9,855	701201
006-0126	TR 281	1.4 MI N ILL 26	I-180	28.5	5		314	10,519	701201
006-0127	TR 322(2600E)	1.6 MI E JCT I-180	I-80	24	1.83		217.5	5,618	701201
006-0128	TR 333	2.5 MI N JCT ILL 29	I-180	26.5	5		282.9	8,911	701201
006-0129	TR 364 (3000E)	1.4 MI N SEATONVILLE	I-80	24	1.83		250	6,458	701201
006-0133	TR 370 (3100E)	2.2 MI W ILL 89	I-80	24	1.83		268.3	6,930	701201
006-0135	US RT 34	1.1MI NE JCT ILL 26	BN RR	42.5	5		348.8	16,568	701201*
006-0137	US 6	1.3 MI E OF I-180	E BUREAU CREEK	30	7.4		156	5,834	701201
006-0138	ILL 40	SOUTH EDGE OF BUDA	BN RR	42.5	5		349	16,578	701501
006-0140	US 6	WEST EDGE OF SHEFFIELD	COAL CREEK	32	7.6		130.4	5,164	701201
006-0142	ILL 89	0.8 MI S ARLINGTON	BRANCH OF BRUSH CR.	32	1.8		63.5	2,146	701201
006-0143	ILL 29	NORTHEAST EDGE DEPUÉ	NEGRO CREEK	32	7.4		153.3	6,040	701201
006-0144	US RT 6	IN SEATONVILLE	NEGRO CREEK	32	7.4		105.3	4,149	701201
006-0145	ILL 40	1.2 MI S OF BUDA	COAL CREEK	32	7.4		118	4,649	701201
006-0148	IL 26 & IL 29	S EDGE BUREAU JCT.	HENNEPIN CANAL	32	7.4		168	6,619	701501
006-0149	ILL 92	1.6 MI. W. US 34	BUREAU CREEK	32	7.4		306	12,056	701201
006-0153	IL 92	3.3 MI. W. OF US 34	STREAM	32	7.4		82.1	3,235	701201
006-0154	US 6/34	1 MI. W OF PRINCETON	BIG BUREAU CREEK	40	7.4		235.2	11,148	701201
006-0155	IL 29	EAST EDGE OF DEPUÉ	DRAINAGE DITCH	32	7.4		116	4,570	701201
006-0156	IL 40	3.5 MI. N. OF I-80	HICKORY CREEK	40	7.4		74.1	3,512	701201
006-0157	IL 40	3 MI. N. OF I-80	DITCH # 4	40	7.4		65	3,081	701201
006-0158	US 6	E EDGE SPRING VALLEY	SPRING CR & ABANDN RR	72	7.4		205	16,277	701606
006-0159	IL 26	0.3 MI. NW OF I-180	E. BUREAU CREEK	44	7.6	14.2	317.4	20,885	701201
006-0160	IL 92	1 MI. E. OF WALNUT	UNNAMED STREAM	32	7.4		78.5	3,093	701201
006-0161	US 6 & 34	AT EAST EDGE WYANET	WEST BUREAU CREEK	36	7.4		150	6,510	701201
006-0162	IL 26	N. EDGE OF PRINCETON	I-80	66.5	7.6	9	216.5	17,991	701601
006-0163	NEW BEDFORD RD	0.6 MI W JCT IL 40	GREEN RIVER	28	7.6		165	5,874	701201
006-0164	IL 89	0.60 MI S OF US 6	RI RAILROAD	30	4.6		230	7,958	701501
006-0169	US RT 6	W OF DEPUÉ SPUR	BRUSH CREEK	32	7.6		127	5,029	701201
006-0178	ILL 89	S. EDGE OF LADD	I-80	56	7.6	7	214.6	15,151	701606
006-0181	IL 89	0.5 MI S JCT US 34	PIKE CREEK	32	7.6		145	5,742	701201
006-0182	US 34	0.5 MI SW OF LAMOILLE	PIKE CREEK	32	7.6		105	4,158	701201
006-0183	US 34	1 MI NE OF LAMOILLE	PIKE CREEK	32	7.6		105	4,158	701201
BUREAU COUNTY SUB-TOTAL								907,563	
PUTNAM COUNTY									
NON-INTERSTATE									
078-0010	ILL 71	JCT I-180 AND ILL 26	I-180	70.5	6.6	5.2	273.8	22,534	701601
078-0022	CH 1	0.17 MI N OF ILL 26	I-180	32.5	2.4		251.8	8,788	701201
PUTNAM COUNTY SUB-TOTAL								31,322	
TOTAL								938,884	

*STRUCTURE HAS EXISTING PCC OVERLAY, ADDITIONAL DRYING TIME BY BE REQUIRED

CONCRETE SEALER									
STRUCTURE NUMBER	FACILITY CARRIED	APPROXIMATE LOCATION	FEATURE CROSSED	DECK WIDTH FEET	PARAPET SURFACE FEET	MEDIAN SURFACE FEET	DECK LENGTH FEET	SEAL AREA SQ FT	TRAFFIC CONTROL AND PROTECTION STANDARD
FORD COUNTY NON-INTERSTATE									
027-0044	ILL 116	1.1 MI E OF ILL 115	KELLY CREEK	32			106	3,392	701201
027-0071	ILL 115	2.0 MI S OF ILL 116	KELLY CREEK	32	4.4		146	5,314	701201
027-0072	ILL 115	5.07 MI N OF IL 116	N FORK VERMILLION RIVER	32	7.6		106.8	4229.28	701201
027-0073	ILL 115	2.3 MI N OF IL 116	KELLY CREEK	32	7.6		76.8	3041.28	701201
027-0076	ILL 54	2.7 MI S ILL 54/115	E BR VERMILION RIVER	32	7.4		91	3,585	701201
027-0078	ILL 9	0.9 MI E OF ELLIOT RD	DRAINAGE DITCH	32	7.4		48	1,891	701201
027-0079	US 24	1.2 MI W OF ILL 115	DRAINAGE DITCH	40	7.4		69	3,271	701201
027-0080	US 24	0.5 MI E ILL 115	N F VERMILION RIVER	40	7.4		93	4,408	701201
027-0081	US 24	1.1 MI E OF ILL 115	N F VERMILION RIVER	40	7.4		99.4	4,712	701201
027-0082	ILL 115	7.8 MI N OF ILL 9	TRIB OF SPRING CREEK	30	7.4		72.5	2,712	701201
027-0083	ILL 115	3.3 MI N OF ILL 9	E BR VERMILION RIVER	30	7.4		69.5	2,599	701201
027-0091	ILL 47	0.3 MI S OF ILL 165	MACKINAW RIVER	36	7.4		88.8	3,854	701201
027-0092	ILL 9	1.7 MI E OF ILL 47	DICKERSON SLOUGH	32	7.6		90	3,564	701201
027-0094	ILL 9	0.7 MI E OF ILL 115	WALL TOWN DR DITCH	32	7.6		122.8	4,863	701201
027-0095	ILL 115	3.4 MI S OF US 24	DITCH	32	7.6		72	2,851	701201
027-0096	ILL 9	0.1 MI W OF ILL 47	DRUMMER CREEK	32	7.6		134	5,306	701501
027-0097	ILL 115	2.4 MI OF ILL 116	DITCH	32	7.6		64	2,534	701201
027-0098	IL 116	3.3 MI E OF IL 115	DRAINAGE DITCH	32	7.6		108	4276.8	701201
027-0099	IL 115	4.52 MI S OF IL 116	DRAINAGE DITCH	32	7.6		70	2772	701201
027-0100	IL 116	2.67 MI E OF IL 115	DRAINAGE DITCH	32	7.6		94	3722.4	701201
027-0101	IL 9	1.04 MI W OF IL 47	DRUMMER CREEK	32	7.6		74.5	2950.2	701201
FORD COUNTY SUB-TOTAL								75,849	
LIVINGSTON COUNTY INTERSTATE									
053-0120	I-55 SOUTHBOUND	1.0 MILE NORTH OF	ROOKS	38.5	5		97	4,220	701406*
053-0121	I-55 NORTHBOUND	MCLEAN COUNTY LINE	CREEK	38.5	5		97	4,220	701406*
053-0124	I-55 SOUTHBOUND	3 MILES SOUTHWEST	ROOKS	38.5	5		282	12,267	701406*
053-0125	I-55 NORTHBOUND	OF PONTIAC	CREEK	38.5	5		282	12,267	701406*
053-0126	I-55 SOUTHBOUND	0.5 MILE NORTH	ABANDONED	38.5	5		148.8	6,473	701406*
053-0127	I-55 NORTHBOUND	OF ILL 116	ICG RAILROAD BED	38.5	5		148.8	6,473	701406, 701411*
053-0128	I-55 SOUTHBOUND	WEST OF	VERMILLION	38.5	5		403.5	17,552	701406*
053-0129	I-55 NORTHBOUND	PONTIAC	RIVER	38.5	5		403.5	17,552	701406*
053-0139	I-55 SOUTHBOUND	3 MILES SOUTHWEST	BRANCH WEST FORK	38.5	5		91.8	3,993	701406*
053-0140	I-55 NORTHBOUND	OF DWIGHT	MAZON RIVER	38.5	5		91.8	3,993	701406*
053-0186	I-55 SOUTHBOUND	0.5 MILES NORTH OF IL 17	NORFOLK SOUTHERN	40	7.6		150.5	7,164	701406
053-0187	I-55 NORTHBOUND	NORTHWEST OF DWIGHT	(CONRAIL) RAILROAD	40	7.6		150.5	7,164	701406, 701411

*STRUCTURE HAS EXISTING PCC OVERLAY, ADDITIONAL DRYING TIME BY BE REQUIRED

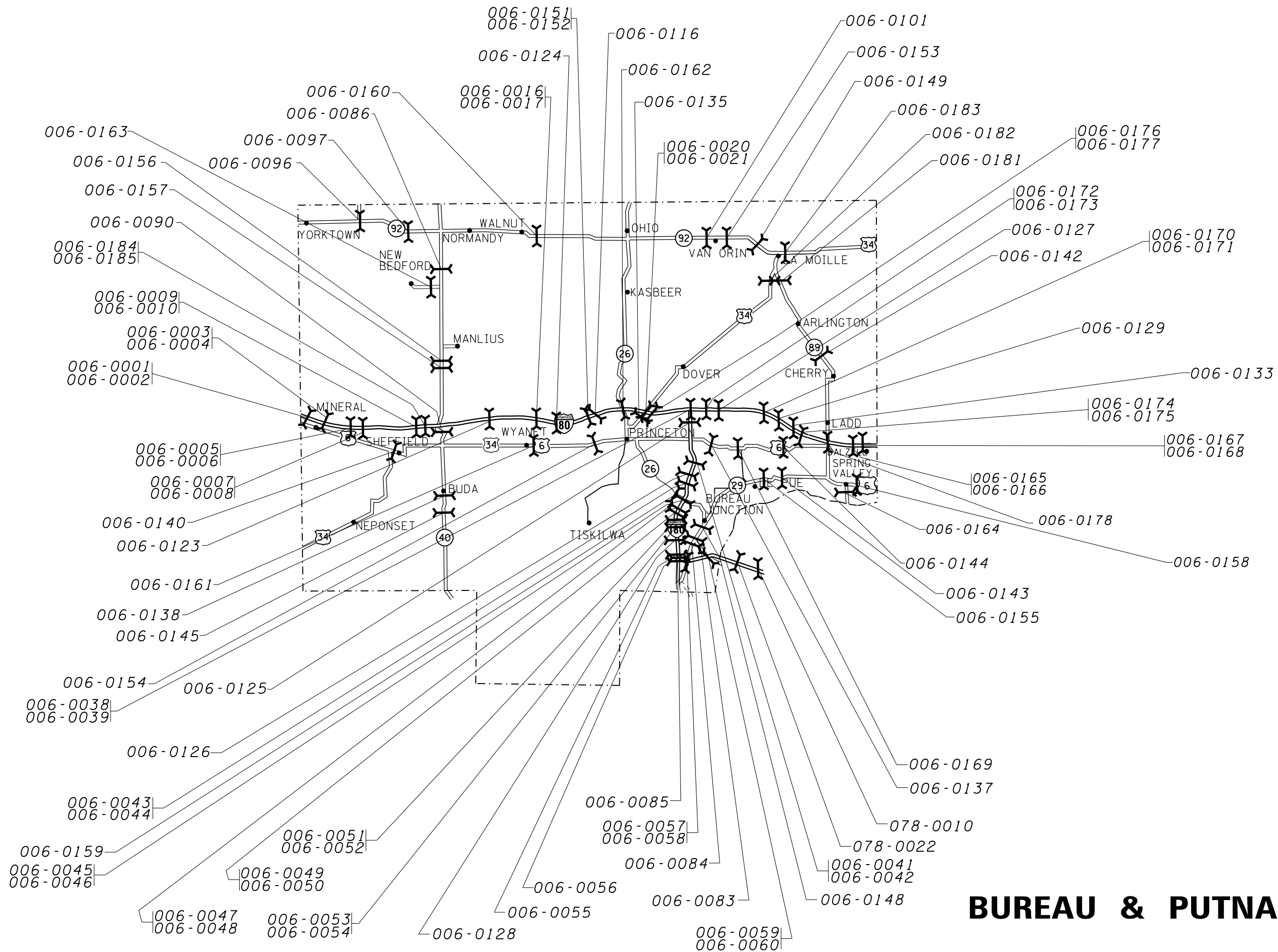
FILE NAME =	USER NAME = duncanbd	DESIGNED -	REVISED -	STATE OF ILLINOIS DEPARTMENT OF TRANSPORTATION	SCHEDULES OF QUANTITIES FORD & LIVINGSTON COUNTIES			F.A. RTE.	SECTION	COUNTY	TOTAL SHEETS	SHEET NO.			
p:\1\084EBID\INTEG.illinois.gov\PIWIDOT\Documents\DOT Offices\District 3\Projects\0366\Drawings\0366F76-sh-t-schedule.dgn		REVISION	REVISION					VAR	*	VARIOUS	11	6			
Default	PLOT SCALE = 100.0000' / in.	CHECKED -	REVISED -					SCALE:			SHEET 3 OF 4 SHEETS	STA.	TO STA.	CONTRACT NO. 66F76	
	PLOT DATE = 8/16/2016	DATE -	REVISED -					*D3 BRIDGE DECK SEALING FY 2017 ILLINOIS FED. AID PROJECT							

CONCRETE SEALER									
STRUCTURE NUMBER	FACILITY CARRIED	APPROXIMATE LOCATION	FEATURE CROSSED	DECK WIDTH FEET	PARAPET SURFACE FEET	MEDIAN SURFACE FEET	DECK LENGTH FEET	SEAL AREA SQ FT	TRAFFIC CONTROL AND PROTECTION STANDARD
LIVINGSTON									
NON-INTERSTATE									
053-0002	OLD RT 66/FAS 294	7.7 MI S OF ILL 116	DRAINAGE DITCH	32	1		74	2,442	701201
053-0003	OLD RT 66/FAS 294	4.5 MI S ILL 116	ROOKS CREEK	32	1		215.5	7,112	701201
053-0005	OLD RT 66/FAS 294	1.3 MI S ILL 116	TURTLE CREEK	33	1		63.2	2,149	701201
053-0007	ILL 116 EASTBOUND	0.6 MILE SOUTH	VERMILLION	40	7.4		229	10,855	701601
053-0008	ILL 116 WESTBOUND	OF ILL 23	RIVER	40	7.4		229	10,855	701601
053-0019	US 24	EAST EDGE FAIRBURY	INDIAN CREEK	39.3	7.4		163	7,612	701201
053-0026	ILL 17	1.3 MI E JCT ILL 17 & 23	VERMILLION RIVER	32	7.4		324.1	12,770	701201
053-0027	ILL 17	2.5 MI E JCT ILL 17 & 23	DRAINAGE DITCH	32	7.4		60.8	2,396	701201
053-0038	ILL 17	0.2 MI W OF ILL 47	GOOSEBERRY CREEK	44	1.6		32	1,459	701501
053-0047	ILL 47	0.3 MI N OF ILL 116	5 MILE CREEK	32	7.4		124.8	4,917	701201
053-0064	ILL 116	3.9 MI W OF I-55	ROOKS CREEK	39.4	1.2		75.8	3,077	701201
053-0066	ILL 116	1.1 MI E OF I-55	TURTLE CREEK	48	1.6	4	54.5	2,921	701606
053-0075	ILL 116	2.9 MI W OF ILL 47	FELKY SLOUGH	36			116	4,176	701201
053-0147	ILL 17	4.5 MI E OF ILL 47	GOOSEBERRY CR TRIB	32	7.6		118.8	4,704	701201
053-0150	ILL 17	6.1 MI E OF ILL 47	MAZON RIVER	36	7.6		181.6	7,918	701201
053-0157	FAS 370 (LONG POINT RD)	0.93 MI W OF IL 23	LONG POINT CREEK	28			108.6	3,041	701201
053-0160	ILL 17	1.0 MI E OF ILL 23	PRAIRIE CREEK	32	7.4		80.3	3,164	701201
053-0163	ILL 170	4.3 MI S OF ILL 17	BR OF MUD CREEK	32	7.4		67.8	2,671	701201
053-0164	ILL 170	6.2 MI S OF ILL 17	BR OF MUD CREEK	32	7.4		43.2	1,702	701201
053-0165	ILL 170	6.9 MI S OF ILL 17	BR OF BAKER RUN	32	7.4		54.9	2,163	701201
053-0166	ILL 47	0.9 MI S ILL 116	5 MILE CREEK	32	7.4		150.9	5,945	701201
053-0167	ILL 17	2.8 MI E OF ILL 17/23	DRAINAGE DITCH	32	7.4		107	4,216	701201
053-0168	ILL 47	0.4 MI S OF US 24	VERMILION RIVER	36	7.4		181.5	7,877	701501
053-0169	ILL 47	8.9 MI S OF US 24	INDIAN CREEK	36	7.4		91.3	3,962	701201
053-0170	ILL 47	0.2 MI S OF ILL 116	5 MILE CREEK	50.7	7.4		98	5,694	701201
053-0174	ILL 23	2.1 MI S OF I-55	NORTH CREEK	40	7.4		83.8	3,972	701201
053-0175	FAU 6322/OLD 66 NB	0.1 MILES NORTH	INTERMITTENT	33.9	1		121.4	4,237	701601
053-0176	FAU 6322/OLD 66 SB	OF IL 23	STREAM	33.9	1		121.4	4,237	701601
053-0177	ILL 23	1.3 MI W OF CORNELL	VERMILION RIVER	32	7.6		334	13,226	701201
053-0178	ILL 116	2.2 MI E OF ILL 47	5 MILE CREEK	32	7.6		92	3,643	701201
053-0179	ILL 47	3.6 MI S OF ILL 116	VERMILION RIVER	36	7.6		192	8,371	701201
053-0181	ILL 116	0.04 MI W OF ILL 47	5 MILE CREEK	46	7.6		91	4,878	701201
053-0182	ILL 17	3.4 MI E OF ILL 47	DRAINAGE DITCH	36	7.6		105	4,578	701201
053-0183	ILL 23	5.7 MI S OF ILL 17	MOLE CREEK	32	7.6		107.5	4,257	701201
053-0185	ILL 17	7.7 MI E OF ILL 47	STREAM	36	7.6		83.3	3,632	701201
053-0188	US 24	FORREST - W OF IL 47	S FORK VERMILION RIVER	30	7.6		228.6	8,595	701501
053-0189	IL 23	7.31 MI S OF IL 17	SHORT POINT CREEK	37.4	7.6		151.5	6,818	701201
053-0190	IL 116	1.9 MI E OF JCT IL 116 & IL 23	SMITH BRANCH	36	7.6		70.5	3,074	701201
053-0191	IL 116	2.53 MI E OF JCT IL 116 & IL 23	SMITH BRANCH	37.5	7.6		73	3,292	701201
LIVINGSTON COUNTY SUB-TOTAL								305,945	
TOTAL								381,794	

*STRUCTURE HAS EXISTING PCC OVERLAY, ADDITIONAL DRYING TIME BY BE REQUIRED

FILE NAME =	USER NAME = duncanbd	DESIGNED -	REVISED -	STATE OF ILLINOIS DEPARTMENT OF TRANSPORTATION	SCHEDULES OF QUANTITIES FORD & LIVINGSTON COUNTIES			F.A. RE.	SECTION	COUNTY	TOTAL SHEETS	SHEET NO.
p:\IL\084EBID\INTEG\illinois.gov\PWIDOT\Documents\DOT Offices\District 3\Projects\0366\DRAWING\0366F76-shr-schedule.dgn		CHECKED -	REVISED -					VAR	*	VARIOUS	11	7
Default	PLOT SCALE = 100.0000' / in.	DATE -	REVISED -					SCALE: SHEET 4 OF 4 SHEETS STA. TO STA.			ILLINOIS FED. AID PROJECT	
	PLOT DATE = 8/16/2016	DATE -	REVISED -							CONTRACT NO. 66F76		

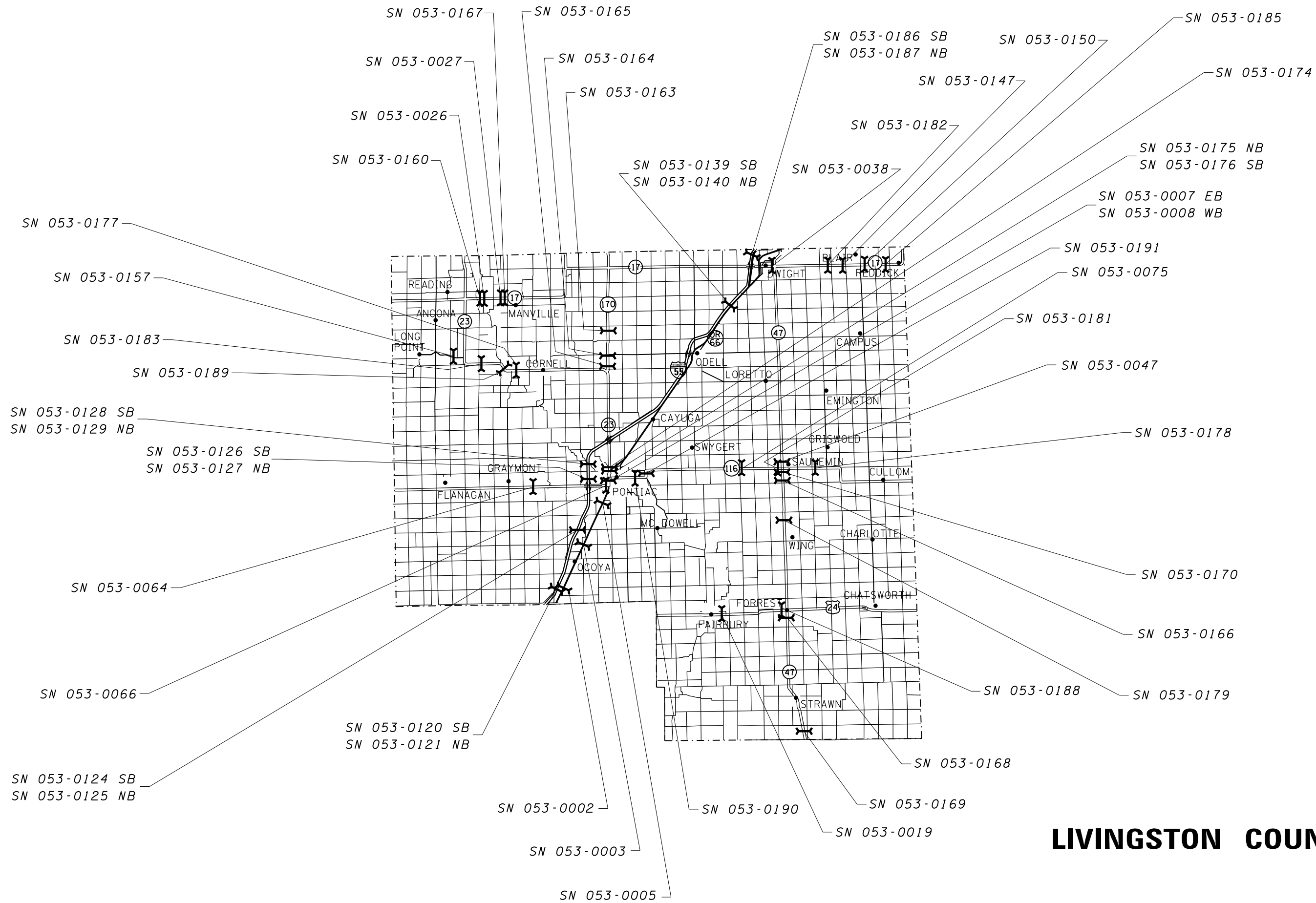
*03 BRIDGE DECK SEALING FY 2017



BUREAU & PUTNAM

FILE NAME =		USER NAME = duncanbd		DESIGNED -		REVISED -		STATE OF ILLINOIS DEPARTMENT OF TRANSPORTATION		BUREAU & PUTNAM COUNTIES LOCATION MAP				F.A. RTE.		SECTION		COUNTY		TOTAL SHEETS		SHEET NO.	
Default		PLOT DATE = 8/16/2016		CHECKED -		REVISED -								SCALE: NTS		SHEET 1 OF 3 SHEETS		STA.		TO STA.		VAR	
p:\11\084EBIDINTEG\11\inois.gov\PI\DOT\Documents\DOT Offices\District 3\Projects\0366F76\Drawings\0366F76-sht-pln.dgn				DATE -		REVISED -														CONTRACT NO. 66F76		11 8	

*D3 BRIDGE DECK SEALING FY 2017



LIVINGSTON COUNTY

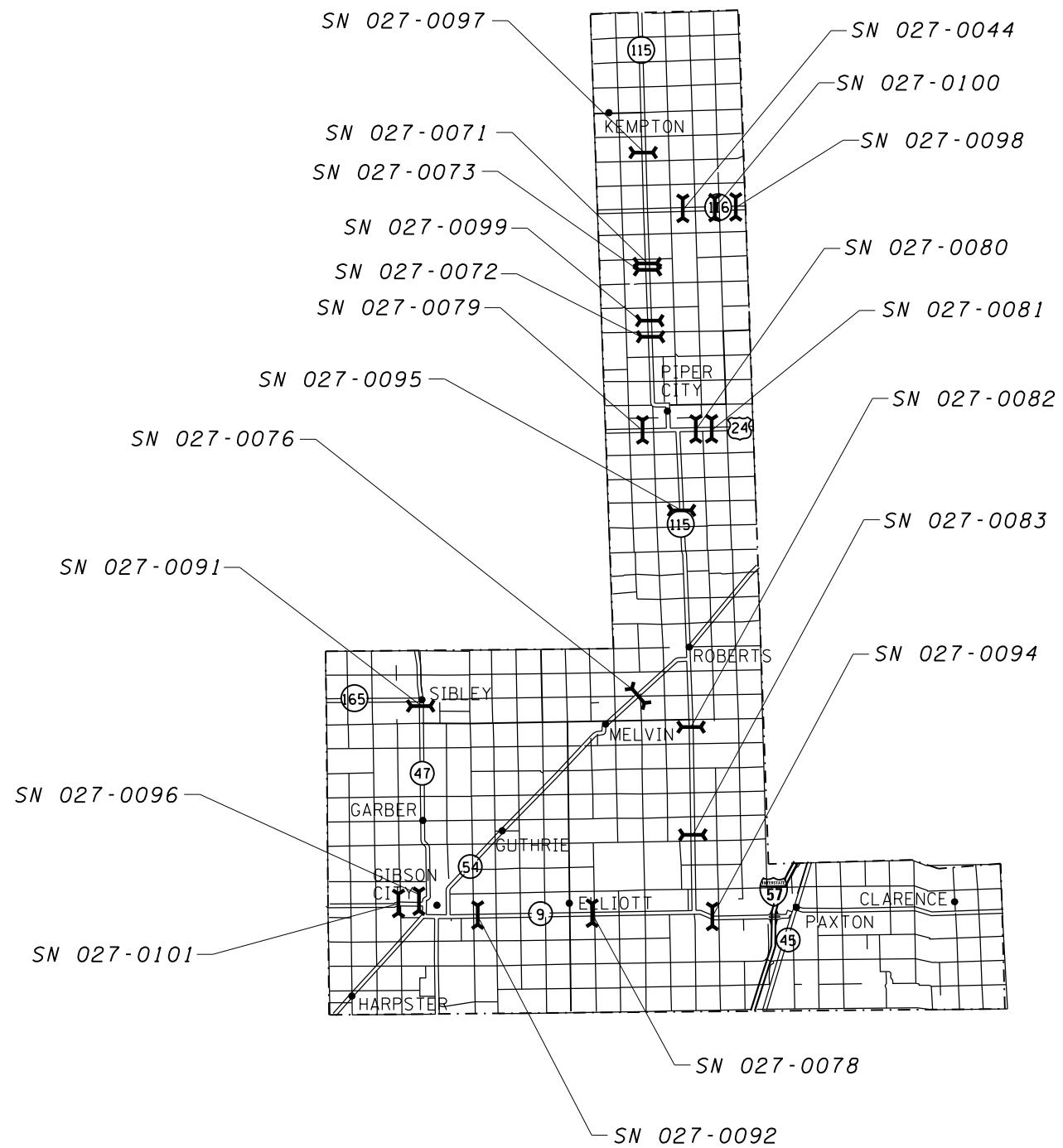
FILE NAME =	USER NAME = duncanbd	DESIGNED -	REVISED -
p:\11084EBIDINTEG.illinois.gov\PWIDOT\Documents\DOT Offices\District 3\Projects\03666\Drawings\B366F76-shr-plan.dgn		REVISED -	REVISED -
Default	PLOT SCALE = 100.0000' / in.	CHECKED -	REVISED -
	PLOT DATE = 8/16/2016	DATE -	REVISED -

**STATE OF ILLINOIS
DEPARTMENT OF TRANSPORTATION**

**LIVINGSTON COUNTY
LOCATION MAP**

SCALE: NTS SHEET 2 OF 3 SHEETS STA. TO STA.

•D3 BRIDGE DECK SEALING FY 2017			
F.A. RTE.	SECTION	COUNTY	TOTAL SHEETS
VAR	•	VARIOUS	11
			SHEET NO. 9
CONTRACT NO. 66F76			
ILLINOIS FED. AID PROJECT			



FORD COUNTY

FILE NAME =	USER NAME = duncanbd	DESIGNED -	REVISED -
p:\11\084EBIDINTEG\illinois.gov\PWIDOT\Documents\DOT Offices\District 3\Projects\0366\DRAWING\0366\0366F76-shr-plan.dgn			REVISED -
Default	PLOT SCALE = 100.0000' / in.	CHECKED -	REVISED -
	PLOT DATE = 8/16/2016	DATE -	REVISED -

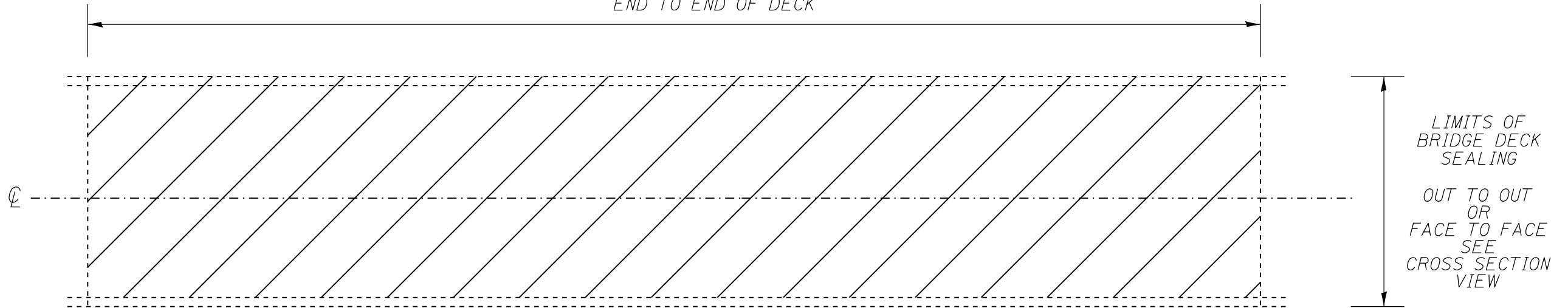
**STATE OF ILLINOIS
DEPARTMENT OF TRANSPORTATION**

**FORD COUNTY
LOCATION MAP**

SCALE: NTS SHEET 3 OF 3 SHEETS STA. TO STA.

*03 BRIDGE DECK SEALING FY 2017				
F.A. RTE.	SECTION	COUNTY	TOTAL SHEETS	SHEET NO.
VAR	.	VARIOUS	11	10
CONTRACT NO. 66F76				
ILLINOIS FED. AID PROJECT				

LIMITS OF BRIDGE DECK SEALING
END TO END OF DECK

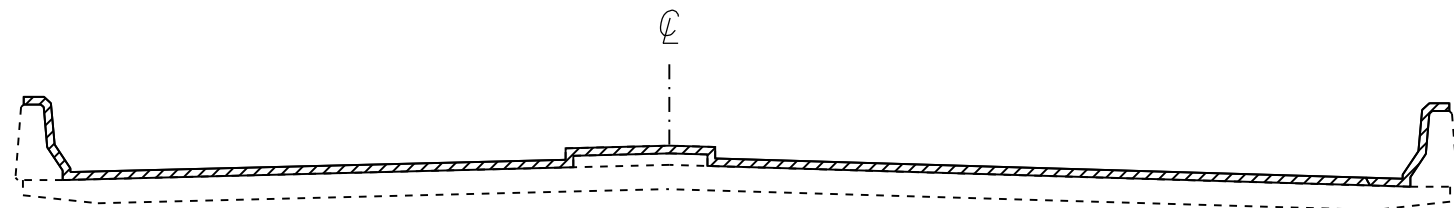


PLAN VIEW

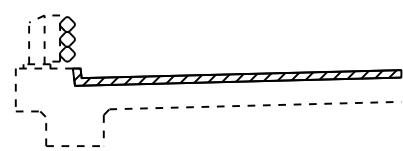
NOTE: BRIDGE APPROACH PAVEMENT SHALL NOT BE SEALED.

EXISTING PAVEMENT MARKINGS SHALL BE TEMPORARILY COVERED PRIOR TO APPLICATION OF THE DECK SURFACE TREATMENT, TO PREVENT THE MATERIAL FROM BEING APPLIED TO THE MARKINGS AND TO PROTECT THE REFLECTIVE PROPERTIES OF THE MARKINGS. THE TEMPORARY COVERING MATERIAL USED SHALL BE SUCH THAT IT WILL NOT AFFECT THE MARKING'S REFLECTIVITY WHEN REMOVED AFTER APPLICATION OF THE DECK SURFACE TREATMENT AND PRIOR TO OPENING TO TRAFFIC. COST INCLUDED WITH CONCRETE SEALER.

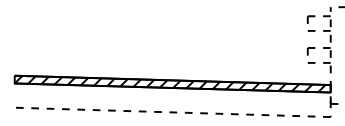
EXISTING EXPANSION JOINTS SHALL BE TEMPORARILY COVERED, PRIOR TO APPLICATION OF THE DECK SURFACE TREATMENT, TO PREVENT THE MATERIAL FROM BEING APPLIED TO THE JOINTS. THE TEMPORARY COVERING SHALL BE REMOVED AFTER THE APPLICATION OF THE DECK SURFACE TREATMENT AND PRIOR TO OPENING TO TRAFFIC. COST IS INCLUDED WITH CONCRETE SEALER.



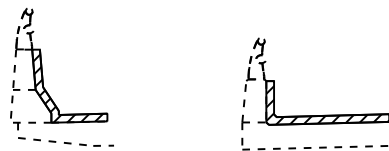
SECTION WITH
PARAPET AND MEDIAN



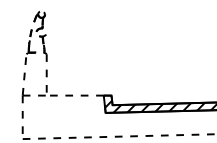
SECTION WITH CURB AND
TUBULAR THRIE BEAM RETROFIT RAIL



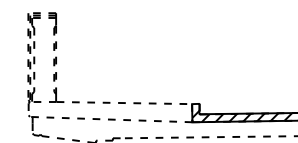
SECTION WITH
BRIDGE RAIL



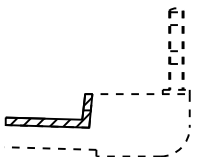
SECTION WITH CONCRETE
AND ALUMINUM RAILING



CONCRETE AND
ALUMINUM RAILING




CONCRETE
BRIDGE RAILING



BRIDGE RAIL

VARIOUS SECTIONS WITH SIDEWALK AND/OR CONCRETE CURB

 AREA TO BE SEALED

NOT TO SCALE

FILE NAME =	USER NAME = duncanbd	DESIGNED -	REVISED -
p:\1\084EBIDINTEG.illinois.gov\PI\DOT\Documents\IDOT Offices\District 3\Projects\0366\Drawings\0366F76-shd-details.dgn		CHECKED -	REVISED -
Default	PLOT DATE = 8/16/2016	DATE -	REVISED -

STATE OF ILLINOIS
DEPARTMENT OF TRANSPORTATION

BRIDGE AND PARAPET
SEALING DETAILS

SCALE: SHEET OF SHEETS STA. TO STA.

*D3 BRIDGE DECK SEALING FY 2017			
F.A. RTE.	SECTION	COUNTY	TOTAL SHEETS
VAR	.	VARIOUS	11
		CONTRACT NO.	66F76
		SHEET NO.	11
ILLINOIS FED. AID PROJECT			