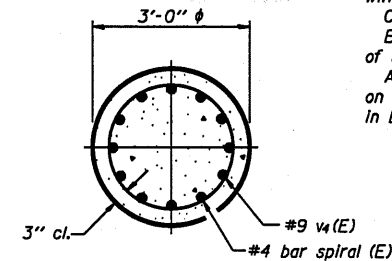
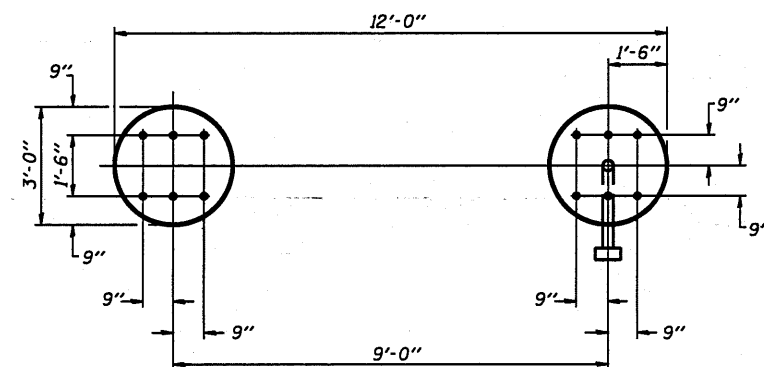


- \* Anchor rod shall be ground or filed to bright metal at clamp and cable connection location.



**SECTION A-A**

A normal surface finish followed by a Bridge Seat Sealer application will be required on concrete surfaces above the lowest elevation 6" below finished ground line. Cost included in Drilled Shaft Concrete Foundation.



**PLAN**

[illegible]

1 Benchmark 100.00 on top of concrete on the west foundation of the existing sign  
2 Benchmark 100.00 on top of concrete SW corner of NE footing

[illegible]

## OVERHEAD SIGN STRUCTURES DRILLED SHAFT DETAILS

12-1-08

FILE NAME =	USER NAME = linkd	DESIGNED -	---	REVISED -	---	<div>STATE OF ILLINOIS DEPARTMENT OF TRANSPORTATION</div>	<div>DISTRICT 2 SIGN STRUCTURE REPLACEMENT</div>				F.A. RTE.	SECTION	COUNTY	TOTAL SHEETS	SHEET NO.
Q:\BR\SIGN TRUSS\CA00 Plans\2011 contrs\2011 plans.dgn		DRAWN -	---	REVISED -	---		*	**	VARIOUS	27	16				
PLOT SCALE = 100.0000' / IN.		CHECKED -	---	REVISED -	---		<div>CONTRACT NO. 46132</div>								
PLOT DATE = Tue Aug 03 06:42:55 2010		DATE -	---	REVISED -	---										
						SCALE: -----	SHEET NO. --	OF -- SHEETS	STA. -----	TO STA. -----	<div>ILLINOISIFIED AID PROJECT</div>				