

ROUTE	SECTION	COUNTY	TOTAL SHEETS	SHEET NUMBER
FA I-90	2010-056 BP	COOK	12	1

CONTRACT NO. 60L31

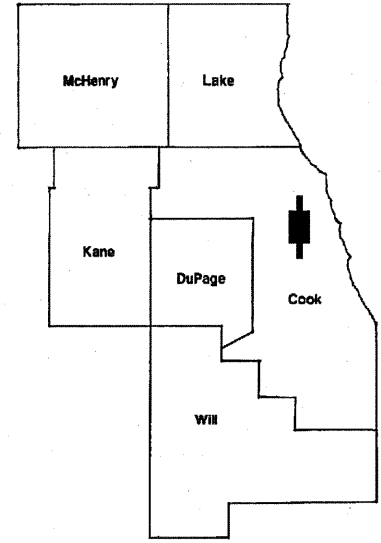
FOR INDEX OF SHEETS SEE SHEET 2

STATE OF ILLINOIS
DEPARTMENT OF TRANSPORTATION
DIVISION OF HIGHWAYS
DISTRICT ONE

D-91-679-10

PROPOSED HIGHWAY PLANS

F.A.I. ROUTE 90: I-90 (JFK EXPWY)
AT CENTRAL AVE. & CTA (SN 016-0659)
SECTION 2010-056 BP
BRIDGE PAINTING
COOK COUNTY
C-91-679-10

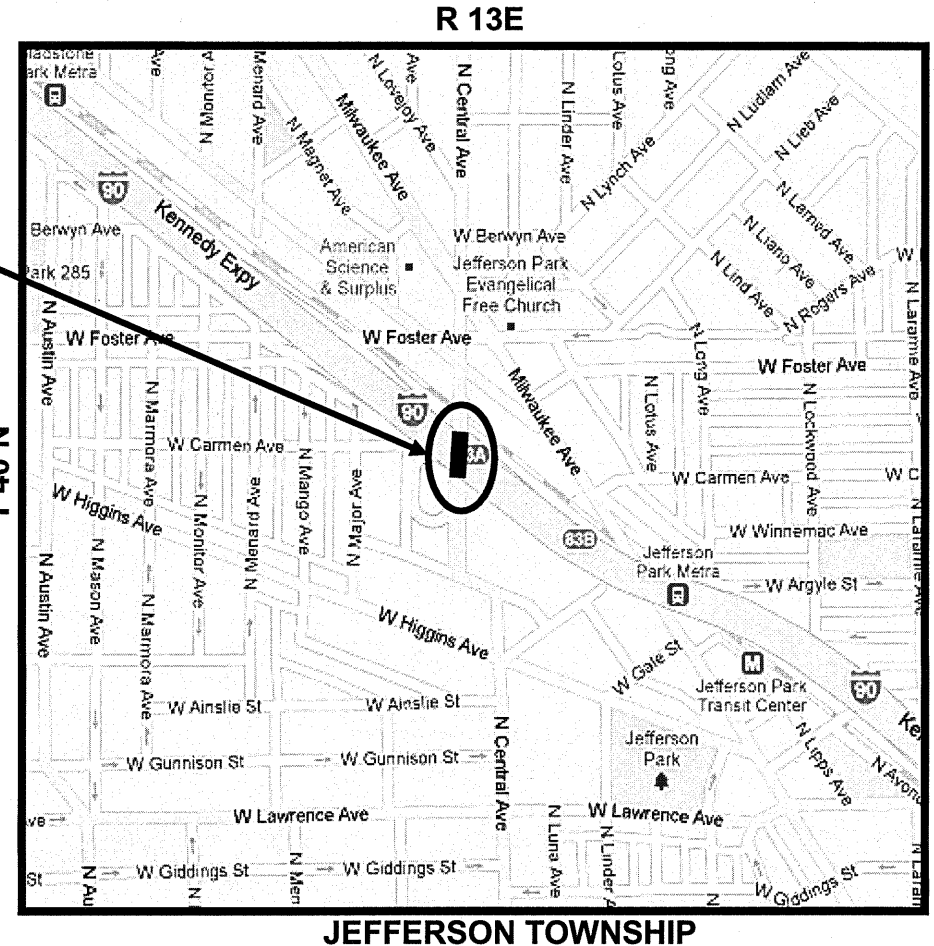


**IMPROVEMENT IS LOCATED
IN THE CITY OF CHICAGO**

**IMPROVEMENT LOCATION
SN 016-0659: I-90 AT CENTRAL AVE**

TRAFFIC DATA:
I-90: SPEED LIMIT = 55 MPH
2009 ADT = 259,500
CENTRAL AVE.: SPEED LIMIT = 30 MPH
2009 ADT = 20,500

LOCATION OF IMPROVEMENT INDICATED THUS:



STATE OF ILLINOIS
DEPARTMENT OF TRANSPORTATION
DIVISION OF HIGHWAYS
SUBMITTED: August 26th 2010
Din O'Leary
DEPUTY DIRECTOR OF HIGHWAYS, REGION ENGINEER
October 1 2010
Scott E. Still PE, Inc.
acting ENGINEER OF DESIGN AND ENVIRONMENT
October 1 2010
Christine M. Reed
DIRECTOR OF HIGHWAYS, CHIEF ENGINEER

**PRINTED BY THE AUTHORITY
OF THE STATE OF ILLINOIS**

C.U.A.N.: CHICAGO UTILITY ALERT
NETWORK
(312) 744-7000

PROJECT ENGINEER ROBERT BORO (847) 705-4178
PROJECT MANAGER ISSAM RAYYAN
CONTRACT NO. 60L31

ROUTE	SECTION	COUNTY	TOTAL SHEETS	SHEET NUMBER
FA I-90	2010-056 BP	COOK	12	2

Contract 60L31

INDEX OF SHEETS

STATE STANDARDS

- 1 TITLE SHEET
- 2 INDEX OF SHEETS, STATE STANDARDS
- 3 GENERAL NOTES
- 4 GENERAL PAINT NOTES
- 5 SUMMARY OF QUANTITIES
- 6-8 EXISTING BRIDGE PLANS (SN 016-0659)
- 9 ENTRANCE RAMP AND CLOSURE DETAILS (TC-08)
- 10 SINGLE AND MULTI-LANE WEAVE (TC-09)
- 11 TRAFFIC CONTROL DETAILS FOR FREEWAY SHOUDLER CLOSURES AND PARTIAL RAMP CLOSURES (TC-17)
- 12 ARTERIAL ROAD INFORMATION SIGN (TC-22)

- 701101-02 MULTILANE, OFF-ROAD OPERATIONS, 15' TO 24" FROM PAVEMENT EDGE
- 701400-04 FREEWAY/EXPRESSWAY, APPROACH TO LANE CLOSURE
- 701401-05 FREEWAY/EXPRESSWAY, LANE CLOSURE
- 701411-06 MULTILANE, LANE CLOSURE, AT ENTRANCE OR EXIT RAMP FOR SPEEDS ≥ 45 MPH
- 701446-01 FREEWAY/EXPRESSWAY, TWO LANE CLOSURE
- 701601-06 MULTILANE, LANE CLOSURE, 1W OR 2W, WITH NONTRAVERSABLE MEDIAN
- 701801-04 MULTILANE, LANE CLOSURE, 1W OR 2W CROSSWALK OR SIDEWALK CLOSURE
- 701901-01 TRAFFIC CONTROL DEVICES

ILLINOIS DEPARTMENT OF TRANSPORTATION
INDEX OF SHEETS STATE STANDARDS
I-90 (JFK)
AT CENTRAL AVE. & CTA
SN 016-0659

ROUTE	SECTION	COUNTY	TOTAL SHEETS	SHEET NUMBER
FAI 90	2010-056 BP	COOK	12	3

CONTRACT NO. 60L31

GENERAL NOTES

BEFORE STARTING ANY EXCAVATION IN THE CITY OF CHICAGO, THE CONTRACTOR SHALL CALL "C.U.A.N." AT (312) 744-7000 FOR FIELD LOCATIONS OF BURIED ELECTRIC, TELEPHONE AND GAS UTILITIES. 48 HOUR NOTIFICATION IS REQUIRED.

THE CONTRACTOR SHALL COORDINATE CONSTRUCTION ACTIVITIES WITH UTILITY COMPANIES, THE CITY OF CHICAGO.

WHEN ARTIFICIAL LIGHTING IS UTILIZED IN NIGHT OPERATIONS, THE CONTRACTOR SHALL EXERCISE THE UTMOST PRECAUTIONS IN PREVENTING ADVERSE VISIBILITY TO THE MOTORING PUBLIC AND ADJOINING RESIDENTIAL AREAS.

IT SHALL BE THE CONTRACTOR'S RESPONSIBILITY TO VERIFY ALL DIMENSIONS & CONDITIONS EXISTING IN THE FIELD PRIOR TO CONSTRUCTION & ORDERING OF MATERIALS.

THE CONTRACTOR WILL NOT BE ALLOWED TO SET UP A YARD OR FIELD OFFICE ON STATE PROPERTY WITHOUT WRITTEN PERMISSION FROM THE DEPARTMENT.

THE CONTRACTOR SHALL CONTACT THE DISTRICT ONE TRAFFIC CONTROL SUPERVISOR AT (847) 705-4470 (FOR ARTERIALS) OR (847)705-4151 (FOR EXPRESSWAYS). A MINIMUM OF 72 HOURS IN ADVANCE OF BEGINNING WORK.

THE CONTRACTOR SHALL BE REQUIRED TO PROVIDE ACCESS TO ABUTTING PROPERTY AT ALL TIMES DURING THE CONSTRUCTION OF THIS PROJECT.

DO NOT SCALE PLANS FOR CONSTRUCTION DIMENSIONS.

THE "ARTERIAL ROAD INFORMATION SIGN (TC-22)" IS APPLICABLE ONLY TO ARTERIAL ROADS AND SHALL NOT BE APPLIED TO EXPRESSWAYS.

IT SHALL BE THE CONTRACTOR'S RESPONSIBILITY TO PROTECT AND PRESERVE THE EXISTING BRIDGE LIGHTING AT ANY LOCATIONS THAT LIGHTING IS ENCOUNTERED ADJACENT TO AN AREA TO BE CLEANED AND PAINTED.

ILLINOIS DEPARTMENT OF TRANSPORTATION

GENERAL NOTES
I-90 (JFK)
AT CENTAL AVE. & CTA
SN 016-0659

ROUTE	SECTION	COUNTY	TOTAL SHEETS	SHEET NUMBER
FAI 90	2010-056 BP	COOK	12	4

CONTRACT NO. 60L31

GENERAL NOTES FOR PAINT

CLEANING AND PAINTING OF THE EXISTING STRUCTURAL STEEL SHALL BE AS SPECIFIED IN THE SPECIAL PROVISION FOR "CLEANING AND PAINTING EXISTING STEEL STRUCTURES".

A MINIMUM OF FOUR (4) AIR MONITORS WILL BE REQUIRED TO MONITOR ABRASIVE BLASTING OPERATION. SEE SPECIAL PROVISION FOR "CONTAINMENT AND DISPOSAL OF LEAD PAINT CLEANING RESIDUE."

THE SSPC-QP1 AND SSPC-QP2 PAINTING CONTRACTOR CERTIFICATIONS WILL BE REQUIRED FOR THESE BRIDGES.

ALL EXISTING STEEL OVER THE CTA (DEFINED AS THE SPLICE - TO - SPLICE AREA OVER THE 59'-2" MEDIAN SHOWN IN THE PLANS) SHALL BE CLEANED PER COMMERCIAL GRADE POWER TOOL CLEANING SSPC-SP15. ALL REMAINING STRUCTURAL STEEL SHALL BE CLEANED PER NEAR WHITE BLAST CLEANING SSPC-SP10. ALL EXISTING STEEL SHALL BE PAINTED ACCORDING TO THE REQUIREMENTS OF PAINT SYSTEM 1 - OZ/E/U. THE COLOR OF THE FINAL FINISH COAT FOR ALL INTERIOR STEEL SURFACES SHALL BE GRAY, MUNSELL NO 5B 7/1. THE COLOR OF THE FINAL FINISH COAT FOR THE EXTERIOR AND BOTTOM FLANGE OF THE FASCIA BEAMS SHALL BE REDDISH BROWN, MUNSELL NO 2.5YR 3/4.

ALL ITEMS (SUCH AS, BUT NOT LIMITED TO; CONDUITS, BRACKETS AND DECK DRAINS) ATTACHED TO THE OUTSIDE OF THE FASCIA BEAMS SHOULD BE CLEANED AND PAINTED.

ILLINOIS DEPARTMENT OF TRANSPORTATION

GENERAL PAINT NOTES

ROUTE	SECTION	COUNTY	TOTAL SHEETS	SHEET NUMBER
FA I-90	2010-056 BP	COOK	12	5

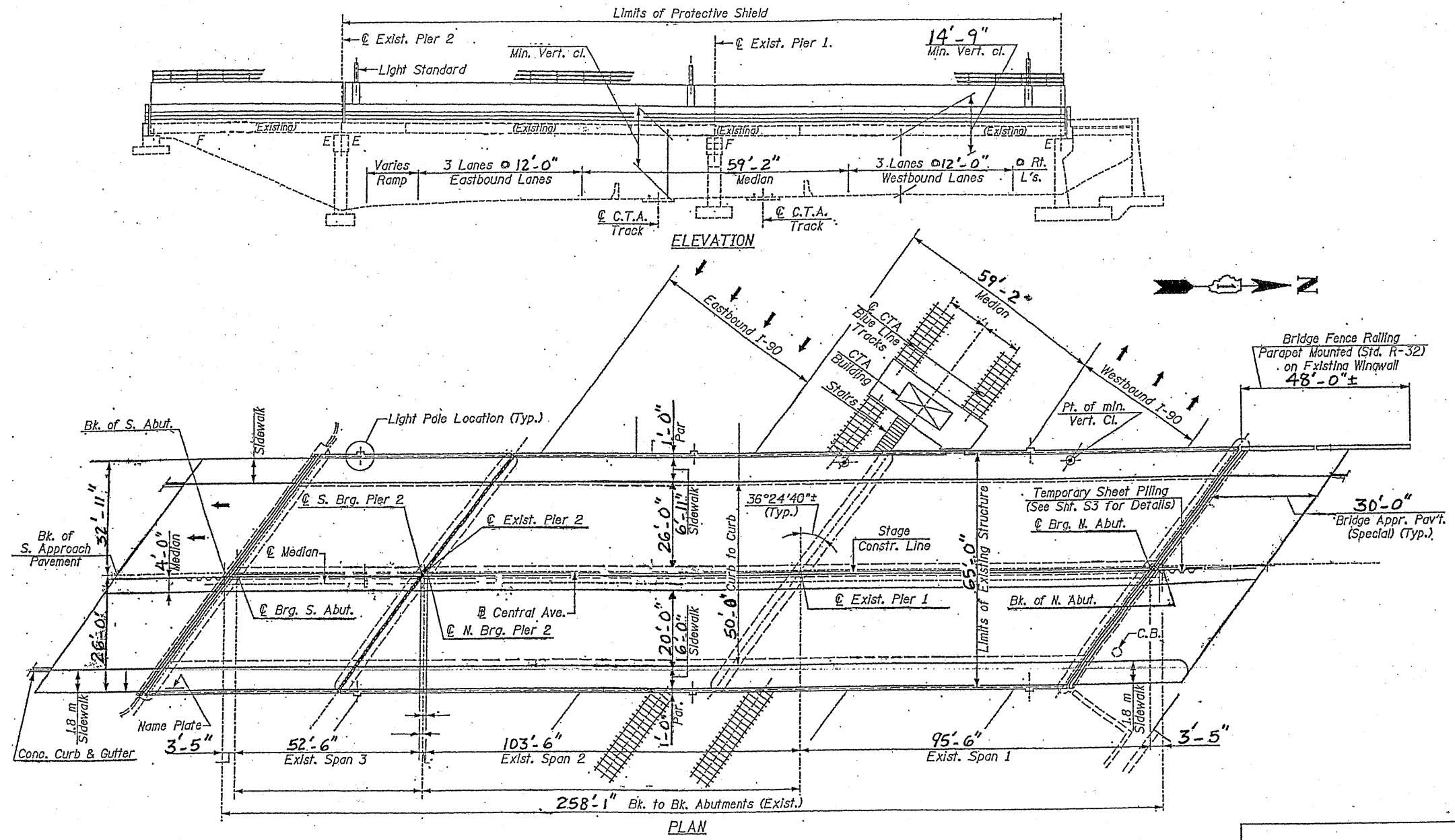
CONTRACT NO.: 60L31

SUMMARY OF QUANTITIES		CONSTRUCTION TYPE CODE:		
CODE NO.	ITEMS	UNITS	100% STATE URBAN TOTAL QUANTITIES	0014
Z0010501	CLEANING AND PAINTING STEEL BRIDGE NO. 1	L SUM	1	1
Z0007112	CONTAINMENT AND DISPOSAL OF LEAD PAINT CLEANING RESIDUES	L SUM	1	1
67000400	ENGINEER'S FIELD OFFICE, TYPE A	CAL MO	6	6
67100100	MOBILIZATION	L SUM	1	1
70102630	TRAFFIC CONTROL AND PROTECTION, STANDARD 701601	L SUM	1	1
70102640	TRAFFIC CONTROL AND PROTECTION, STANDARD 701801	L SUM	1	1
Z0030850	TEMPORARY INFORMATION SIGNING	SQ FT	51.4	51.4
X7011015	TRAFFIC CONTROL AND PROTECTION (EXPRESSWAYS)	L SUM	1	1
Z0048665	RAILROAD PROTECTIVE LIABILITY INSURANCE	L SUM	1	1
Z0026346	NIGHTTIME WORK ZONE LIGHTING	L SUM	1	1

ILLINOIS DEPARTMENT OF TRANSPORTATION
SUMMARY OF QUANTITIES
I-90 (JFK)
AT CENTRAL AVE. & CTA
SN 016-0659

ROUTE	SECTION	COUNTY	TOTAL SHEETS	SHEET NUMBER
FA I-90	2010-056 BP	COOK	12	6

CONTRACT NO. 60L31



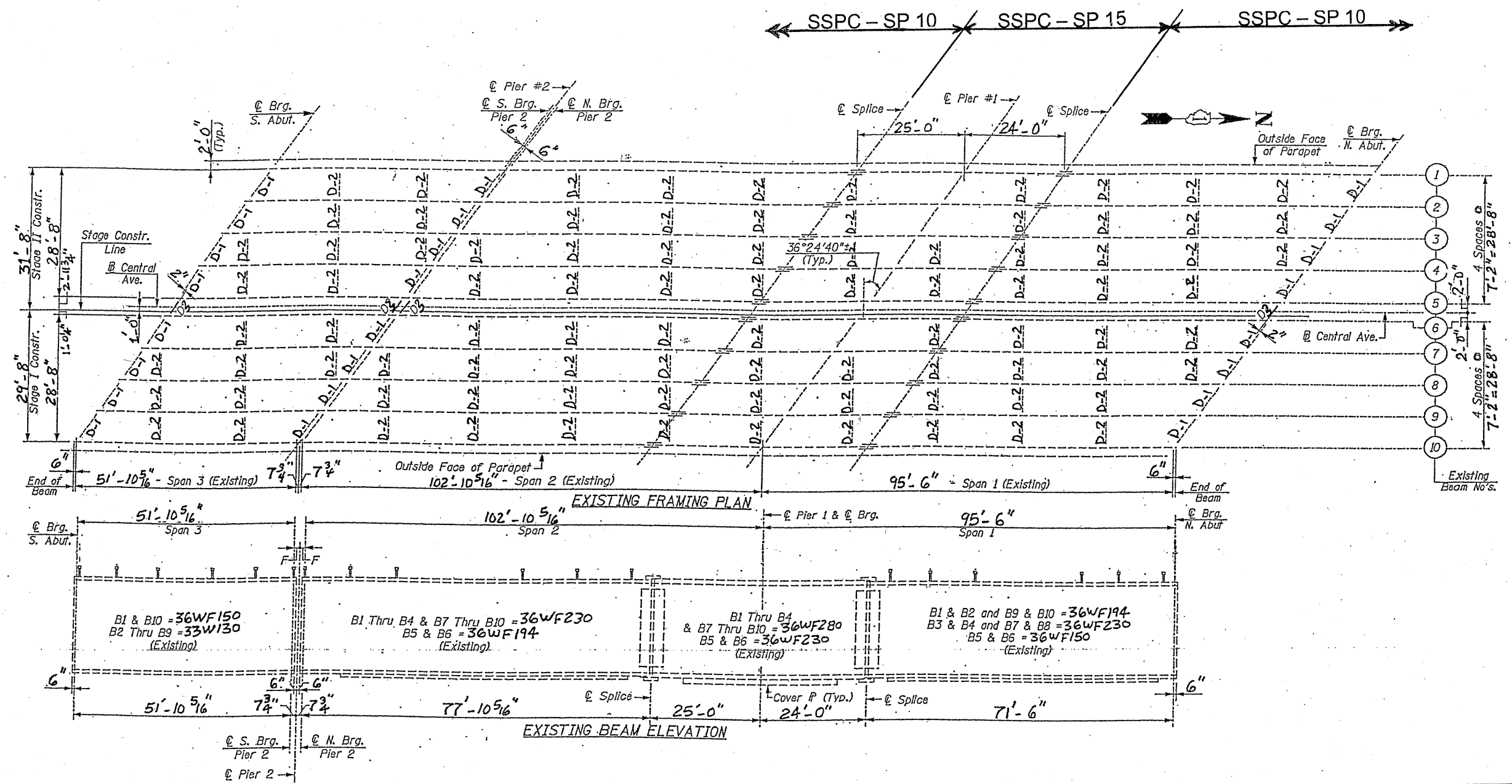
FOR INFORMATION ONLY

ILLINOIS DEPARTMENT OF TRANSPORTATION
 GENERAL PLAN AND ELEVATION
 I-90 (JFK)
 AT CENTRAL AVE. & CTA
 SN 016-0659

SHEET 1 OF 3

ROUTE	SECTION	COUNTY	TOTAL SHEETS	SHEET NUMBER
FA I-90	2010-056 BP	COOK	12	7

CONTRACT NO. 60L31

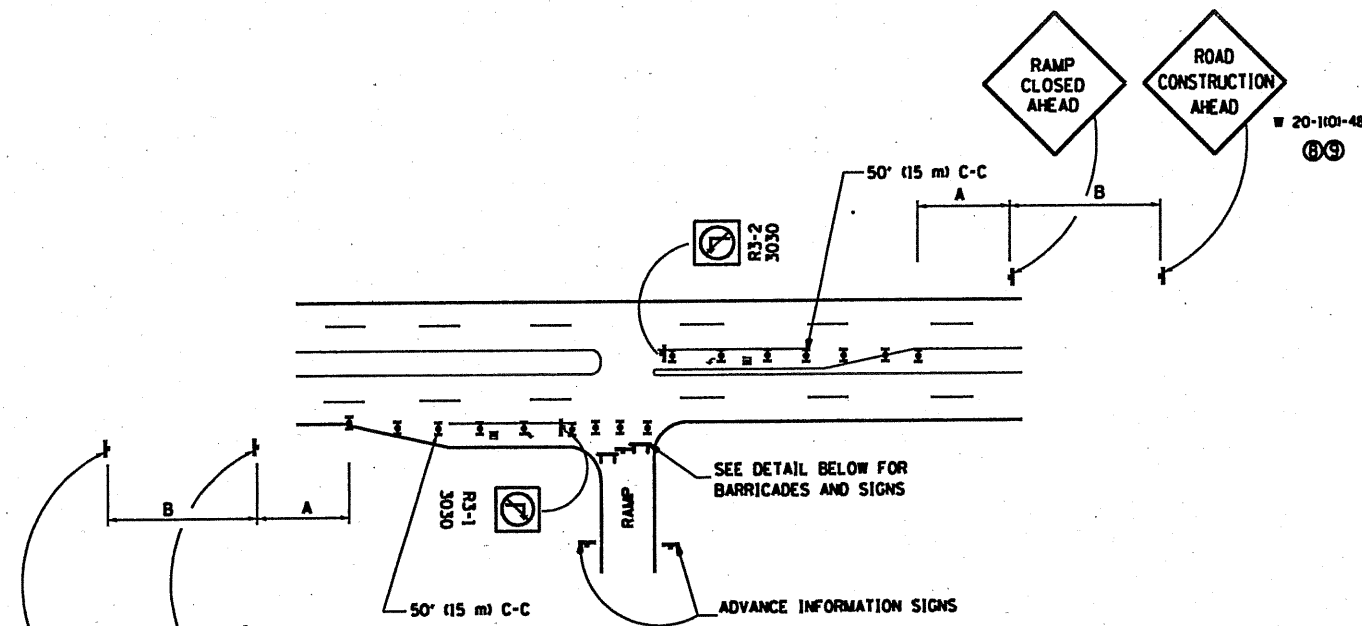


DIAPHRAGMS
 ALL D1 = 18WF50
 ALL D2 = 18C42.7
 ALL D3 = W12 X 40

FOR INFORMATION ONLY

ILLINOIS DEPARTMENT OF TRANSPORTATION
 FRAMING PLAN & DETAILS
 I-90 (JFK)
 AT CENTRAL AVE. & CTA
 SN 016-0659

SHEET 2 OF 3

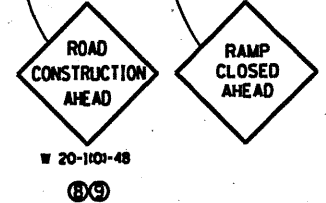


ENTRANCE RAMP CLOSURE

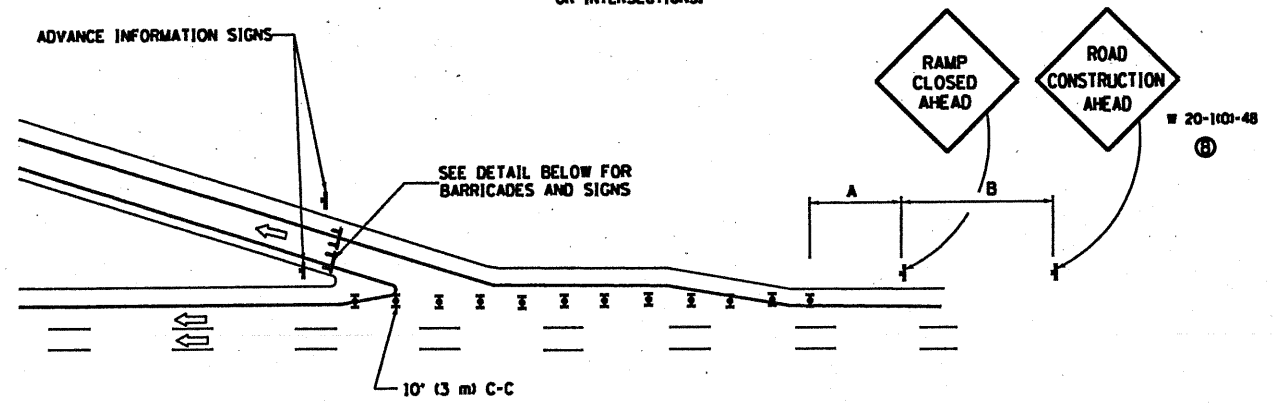
SIGN SPACING TABLE

FACILITY	DISTANCE BETWEEN SIGNS	
	A	B
EXPRESSWAY >24 HOURS	1000' (300 m)	1500' (450 m)
EXPRESSWAY ≤24 HOURS	500' (150 m)	500' (150 m)
ARTERIAL ≥45 MPH	350' (100 m)	350' (100 m)
ARTERIAL <45 MPH	150' (45 m)	150' (45 m)

DISTANCES MAY BE SHORTENED DEPENDING UPON THE PROXIMITY OF ADJACENT RAMPS OR INTERSECTIONS.

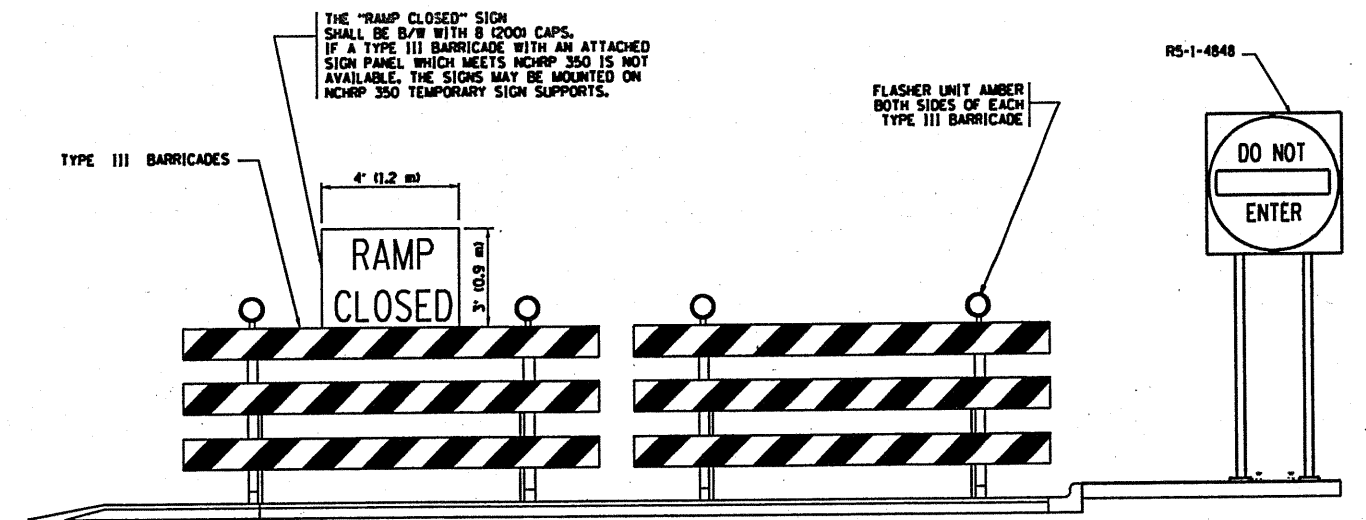


W 20-100-48
B3

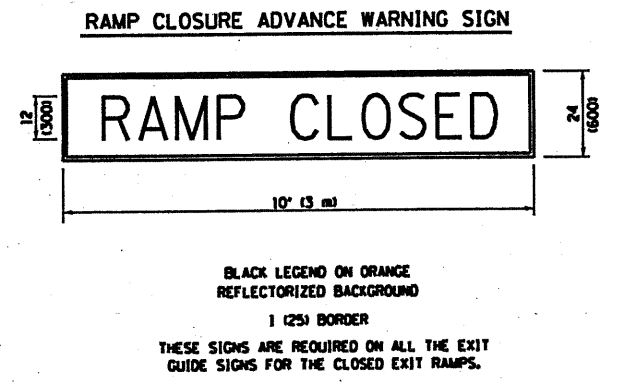


EXIT RAMP CLOSURE

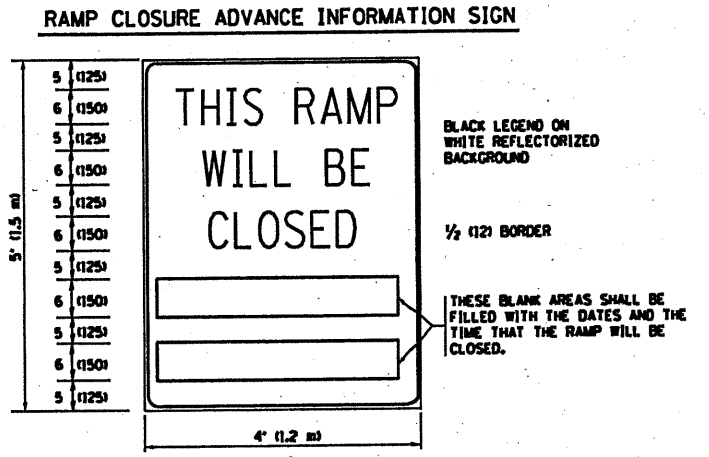
- SYMBOLS**
- ▬ TYPE II BARRICADE, DRUM OR VERTICAL BARRICADE WITH STEADY BURN MONO-DIRECTIONAL LIGHT
 - ⌈ TYPE III BARRICADE WITH FLASHING LIGHT



DETAIL FOR REQUIRED BARRICADES & SIGNS



BLACK LEGEND ON ORANGE REFLECTORIZED BACKGROUND
1 (25) BORDER
THESE SIGNS ARE REQUIRED ON ALL THE EXIT GUIDE SIGNS FOR THE CLOSED EXIT RAMPS.



THESE SIGNS ARE REQUIRED ON BOTH SIDES OF THE RAMP, MINIMUM OF 1 WEEK IN ADVANCE OF THE CLOSURE.

GENERAL NOTES:

- ① CONES MAY BE SUBSTITUTED FOR DRUMS OR TYPE II BARRICADES DURING DAY OPERATIONS. CONES SHALL BE A MINIMUM OF 28 (700) HIGH.
- ② STEADY BURN LIGHTS WILL NOT BE REQUIRED FOR DAY OPERATIONS.
- ③ A FLAGGER SHALL BE POSITIONED AT EACH CLOSED RAMP THAT IS OPEN TO CONSTRUCTION VEHICLES.
- ④ ALL ROUTE MARKERS AND TRAILBLAZER ASSEMBLIES WHICH DIRECT MOTORISTS TO A CLOSED ENTRANCE RAMP SHALL BE COVERED.
- ⑤ THE SIGNING AND BARRICADING WHICH IS REQUIRED BY THIS DETAIL SHALL BE INCLUDED IN THE COST OF TRAFFIC CONTROL AND PROTECTION (EXPRESSWAYS).
- ⑥ AUTHORIZATION FROM THE DISTRICT'S BUREAU OF TRAFFIC IS REQUIRED FOR ALL RAMP CLOSURES.
- ⑦ THE RAMP CLOSURE ADVANCE INFORMATION SIGNS SHALL BE ERECTED IF THE CLOSURE TIME EXCEEDS TWENTY-FOUR (24) HOURS. ADDITIONAL ADVANCE WARNING SIGNS ON EXIT GUIDE SIGNING WILL BE REQUIRED FOR EXIT RAMP CLOSURES THAT EXCEED TWENTY-FOUR (24) HOURS IN LENGTH.
- ⑧ ROAD CONSTRUCTION AHEAD SIGNS MAY BE OMITTED WHEN THIS DETAIL IS USED IN CONJUNCTION WITH OTHER TRAFFIC CONTROL THAT ALREADY INCLUDES A ROAD CONSTRUCTION AHEAD SIGN.
- ⑨ ARTERIAL ROAD CONSTRUCTION AHEAD SIGNS MAY BE OMITTED ON CLOSURES LESS THAN 24 HOURS IN DURATION.

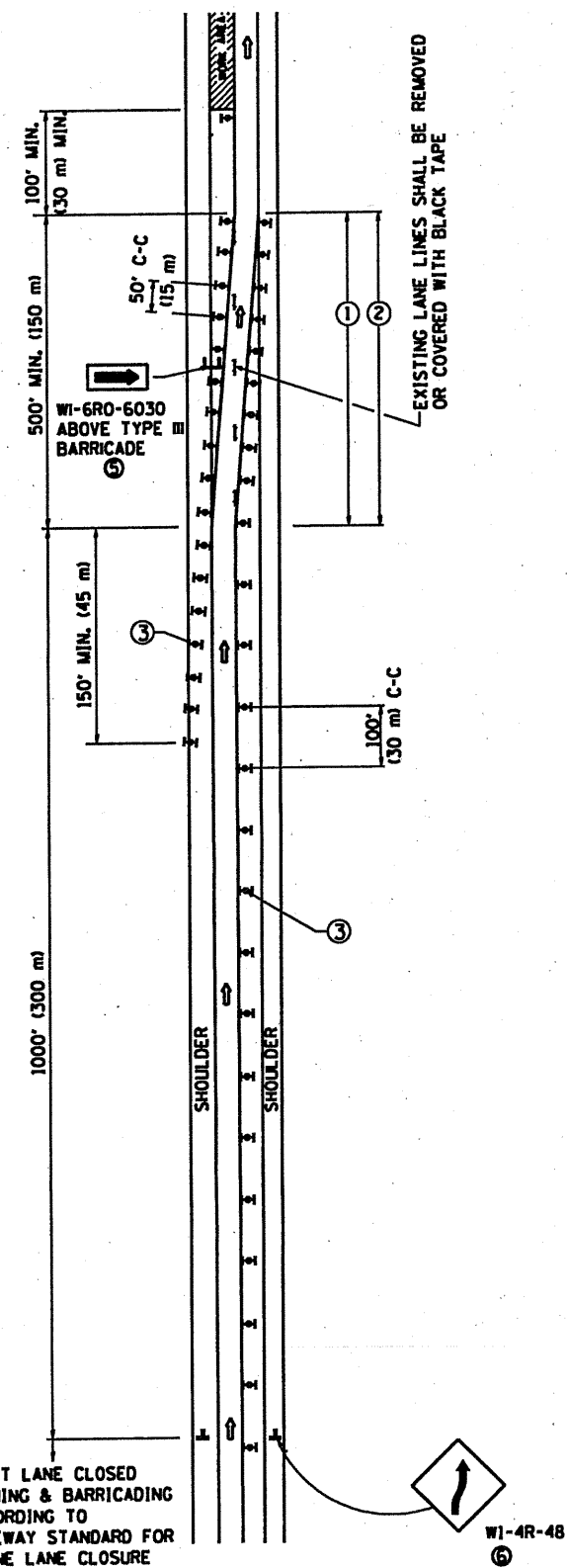
ALL DIMENSIONS ARE IN INCHES (MILLIMETERS) UNLESS OTHERWISE SHOWN.

FILE NAME	USER NAME	DESIGNED	REVISED
FILE#	#USER#	DWS	DWS/JAF 12-02
		DRAWN	REVISED
		-	JAF 02-06
		CHECKED	REVISED
		-	SPB 01-07
		DATE	REVISED
		02-83	SPB 12-09

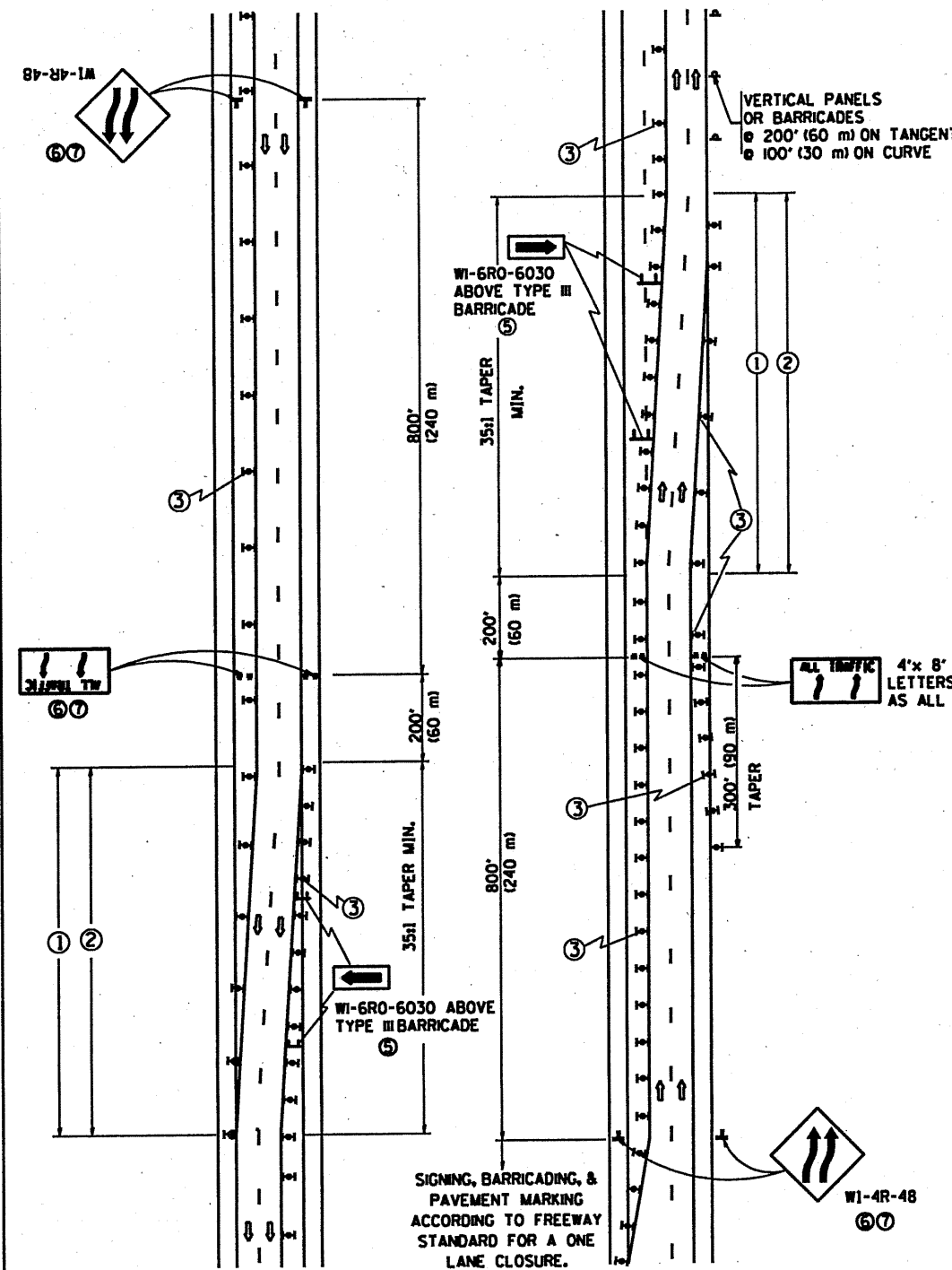
STATE OF ILLINOIS
DEPARTMENT OF TRANSPORTATION

FREeway ENTRANCE AND EXIST RAMP CLOSURE DETAILS		F.A. RTE.	SECTION	COUNTY	TOTAL SHEETS	SHEET NO.
SCALE: NONE		90/1-90	2010-0556 BP	COOK	12	11
SHEET NO. 1 OF 1 SHEETS		TC-08	CONTRACT NO.			
STA. TO STA.		FED. ROAD DIST. NO. 1 ILLINOIS/PEL. AND PROJECT				

SINGLE LANE WEAVE



MULTI-LANE WEAVE



GENERAL NOTES

- EXISTING CONFLICTING PAVEMENT MARKING LINES SHALL BE REMOVED. PAVEMENT MARKING REMOVAL SHALL NOT BE REQUIRED FOR SINGLE LANE WEAVES UNDER 24 HOURS IN DURATION.
- CONTINUOUS REFLECTIVE TEMPORARY PAVEMENT MARKING TAPE SHALL BE PLACED THROUGHOUT THE TAPER AND FOR 300' (90 m) ALONG SIDE THE WORK AREA WHERE THE CLOSURE TIME IS GREATER THAN FOURTEEN DAYS. THE LEFT EDGE LINE SHALL BE YELLOW AND THE RIGHT EDGE LINE SHALL BE WHITE. FOR MULTI-LANE WEAVES LANE LINES SHALL BE 5 INCH, 10'-30' (3 m-9 m) SKIP DASH, WHITE.
- PLASTIC DRUMS WITH STEADY BURN LIGHTS AT 50' (15 m) C-C SPACING IN TAPERS AND 100' (30 m) C-C SPACING IN TANGENTS.
- ALL SIGNS SHALL BE POST MOUNTED IF THE CLOSURE TIME EXCEEDS FOUR DAYS.
- IF A TYPE III BARRICADE WITH AN ATTACHED SIGN PANEL WHICH MEETS NCHRP 350 IS NOT AVAILABLE, THE SIGNS MAY BE MOUNTED ON NCHRP 350 TEMPORARY SIGN SUPPORTS. TYPE III BARRICADES MAY BE OMITTED FOR SINGLE-LANE WEAVES UNDER 24-HOURS IN DURATION. WI-6 SIGNS WILL STILL BE REQUIRED. IF THE WIDTH OF OFFSET IS LESS THAN 6' THEN THE TYPE III BARRICADE WITH ATTACHED ARROW SIGN PANEL CAN BE ELIMINATED IN THE TAPER AREAS.
- WHEN THE LENGTH OF THE SHIFTED SEGMENT (DISTANCE BETWEEN WEAVE POINTS) IS LESS THAN 1500', DOUBLE REVERSE CURVE SIGNS (W24-1) SHOULD BE USED INSTEAD OF THE REVERSE CURVE (W1-4) SIGNS. ARROWS ON THE 4'x8' "ALL TRAFFIC" SIGNS SHALL BE THE SAME SHAPE.
- THE NUMBER OF ARROWS ON THESE SIGNS SHALL MATCH THE NUMBER OF LANES OPEN TO TRAFFIC.

SYMBOLS

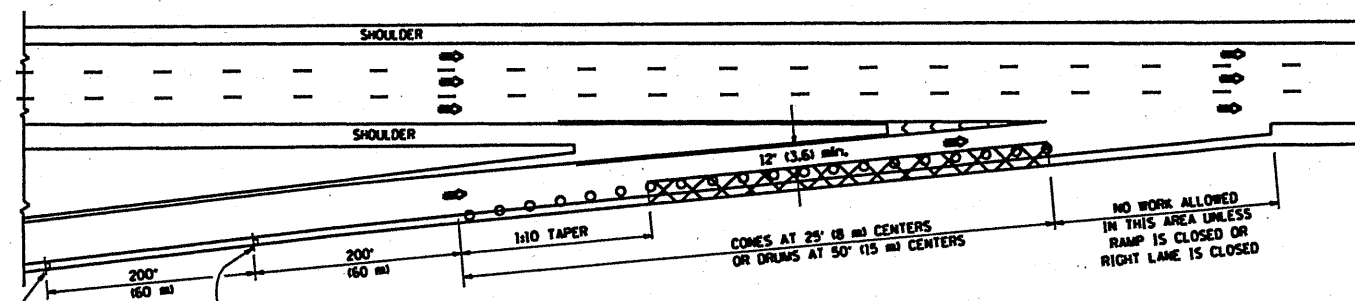
- ↑ DIRECTION OF TRAFFIC
- ▨ WORK AREA
- SIGN ON PORTABLE OR PERMANENT SUPPORT
- ⊞ TYPE II BARRICADE OR DRUM WITH MONO-DIRECTIONAL STEADY BURNING LIGHT



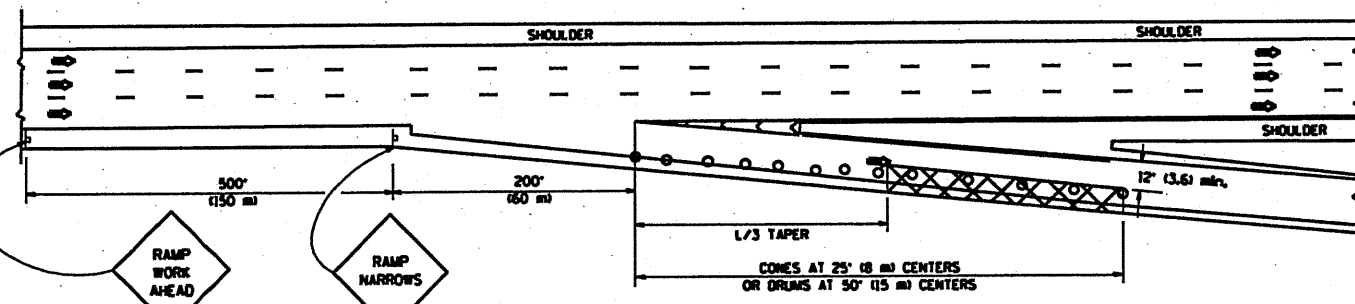
ALL DIMENSIONS ARE IN INCHES (MILLIMETERS) UNLESS OTHERWISE SHOWN

FILE NAME * #FILE#	USER NAME * #USER#	DESIGNED - DWS	REVISED - JAF 01-03	STATE OF ILLINOIS DEPARTMENT OF TRANSPORTATION	TRAFFIC CONTROL DETAILS FOR FREEWAY SINGLE & MULTI-LANE WEAVE		F.A. RTE. 90/1-90	SECTION 2010-0556 BP	COUNTY COOK	TOTAL SHEETS 12	SHEET NO. 10
		DRAWN -	REVISED - JAF 02-06		SCALE: NO:2	SHEET NO. 1 OF 1 SHEETS	STA.	TC-09	CONTRACT NO.	60	
		PLOT SCALE * #SCALE#	REVISED - SPB 01-07				TO STA.	FED. ROAD DIST. NO. 1 (ILLINOIS) FED. AID PROJECT			
		PLOT DATE * #DATE#	REVISED - SPB 12-09								

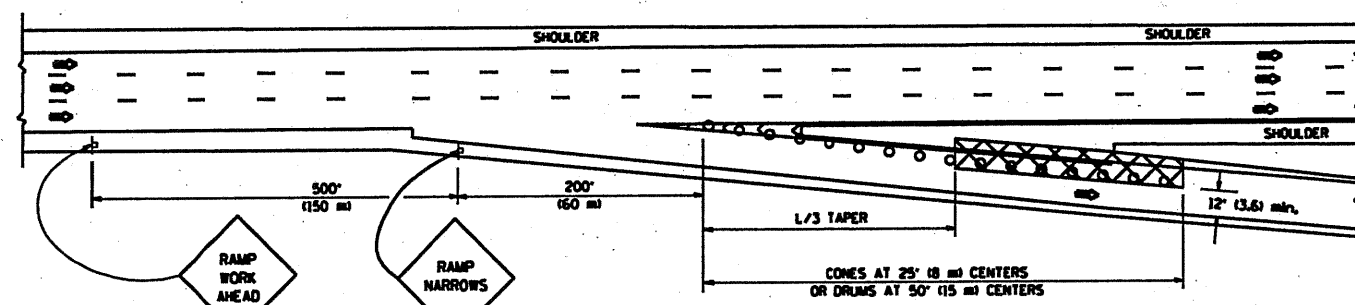
PARTIAL RAMP CLOSURE DETAILS



TYPICAL ENTRANCE RAMP



TYPICAL EXIT RAMP



TYPICAL EXIT RAMP

SYMBOLS

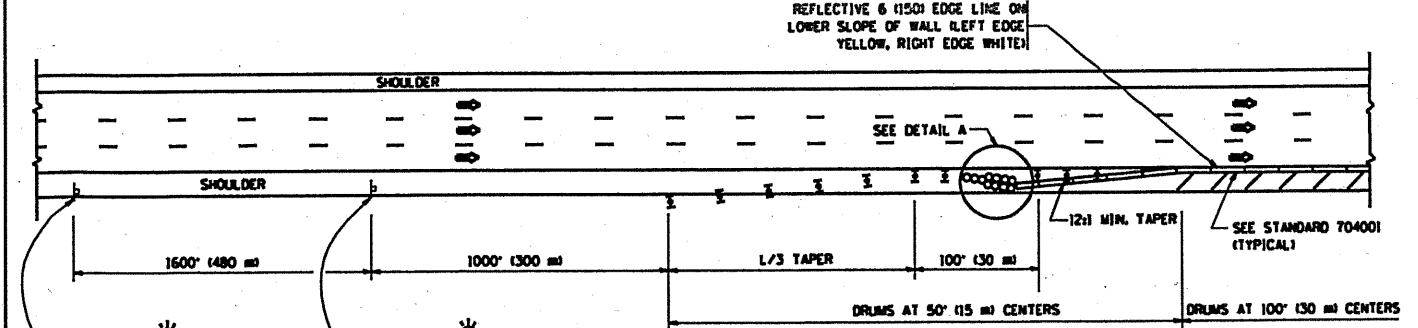
- ACTIVE WORK AREA
- SIGN ON PORTABLE OR PERMANENT SUPPORT
- FLAGGER WITH CONTROL SIGN
- TYPE II BARRICADE, DRUM OR VERTICAL BARRICADE WITH STEADY BURN MONO-DIRECTIONAL LIGHT
- CONE, DRUM OR BARRICADE

GENERAL NOTES

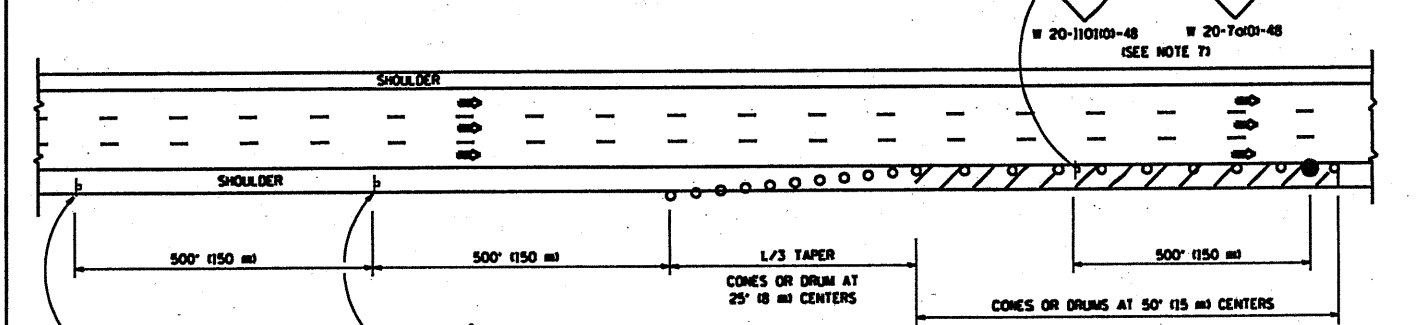
1. THE "L" DISTANCE EQUALS:

SPEED LIMIT	FORMULAS
45 mph (80 km/h) OR GREATER	METRIC: $L = 0.65(W)(S)$ ENGLISH: $L = (W)(S)$
W = WIDTH OF OFFSET IN FEET (METERS)	S = NORMAL POSTED SPEED MPH (KM/H)
2. PLASTIC DRUMS WITH HIGH PERFORMANCE REFLECTIVE SHEETING AND STEADY BURNING LIGHTS ARE REQUIRED FOR ALL NIGHTTIME CLOSURES.
3. ALL SIGNS SHALL BE POST MOUNTED IF THE CLOSURE TIME EXCEEDS FOUR DAYS.
4. FLASHING LIGHTS SHALL BE USED DURING THE HOURS OF DARKNESS AND SHALL BE INSTALLED ABOVE THE FIRST TWO SETS OF SIGNS.

SHOULDER CLOSURE DETAILS

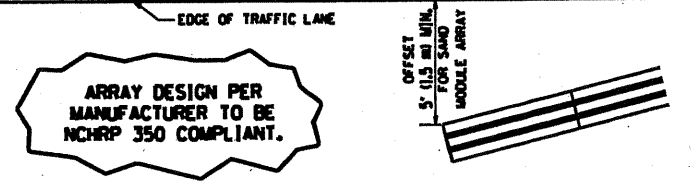


PERMANENT SHOULDER CLOSURE



DAYTIME SHOULDER CLOSURE

THIS DETAIL IS USED WHERE:
 1. VEHICLES, EQUIPMENT, WORKERS OR THEIR ACTIVITIES ENCRUCH IN AN AREA CLOSER THAN 15' (4.5 m) TO THE EDGE OF PAVEMENT FOR A PERIOD IN EXCESS OF 15 MINUTES.

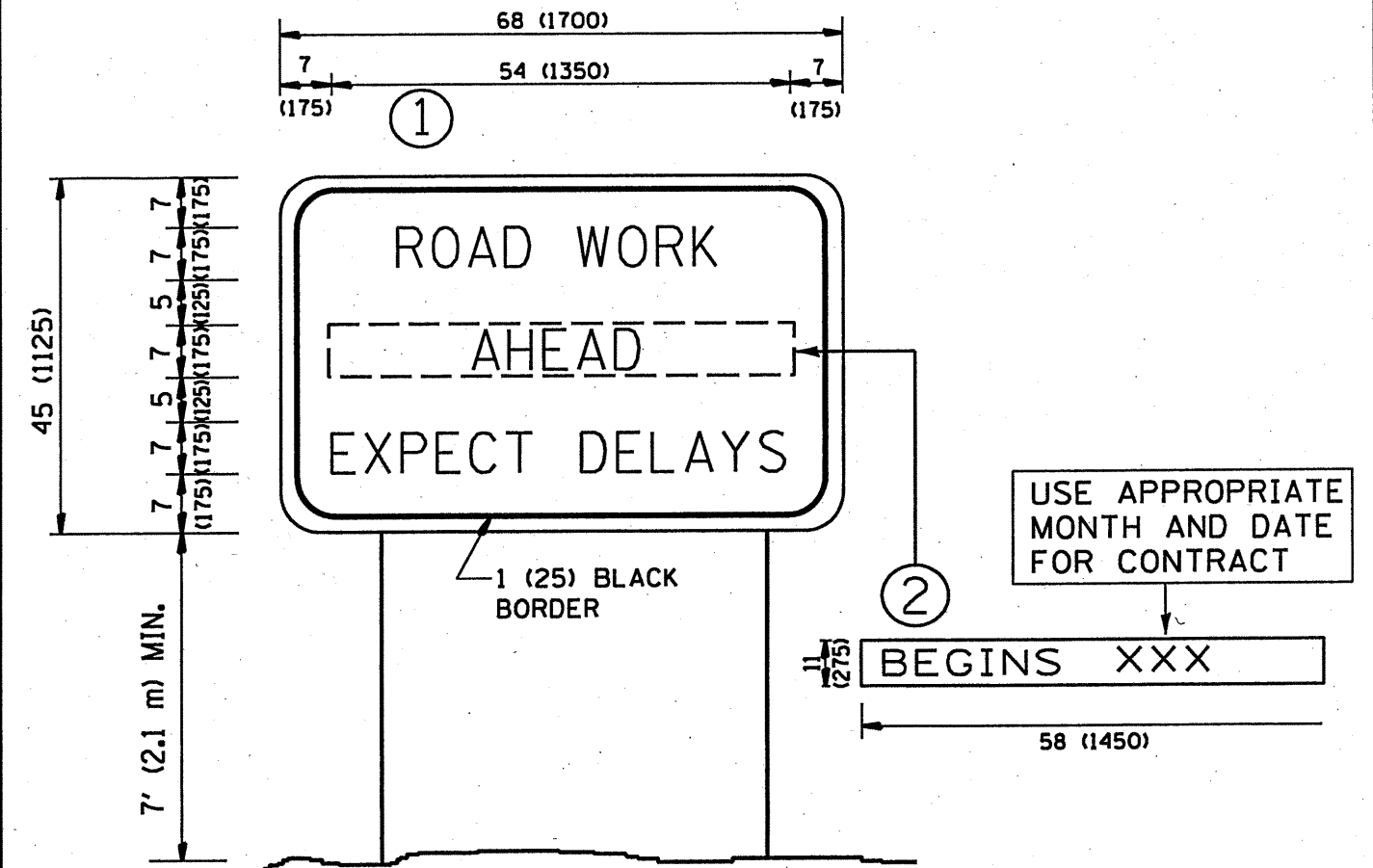


DETAIL "A" IMPACT ATTENUATOR, TEMPORARY (SEE NOTE 5)

5. THE IMPACT ATTENUATOR, TEMPORARY IS NOT REQUIRED WHEN THE TEMPORARY CONCRETE BARRIER WALL IS PROTECTED BY OR IS TIED INTO THE EXISTING GUARDRAIL. IF OFFSET IS LESS THAN 5 FEET USE NARROW USE TYPE DEVICE TO MEET NCHRP350.
6. AUTHORIZATION FROM THE DISTRICT'S BUREAU OF TRAFFIC IS REQUIRED FOR ALL FREEWAY CLOSURES.
7. THE FLAGGER AND FLAGGER SIGN ARE REQUIRED AT THE ABOVE WORK SITES WHEN:
 - a. FOUR OR MORE WORK VEHICLES ENTER THE TRAFFIC LANES IN A ONE HOUR PERIOD.
 - b. THE WORK ACTIVITY REQUIRES FREQUENT ENCRUCHMENT INTO THE LANE OPEN TO TRAFFIC.
 THE FLAGGER SHALL BE STATIONED APPROXIMATELY 100' (30 m) TO 200' (60 m) IN ADVANCE OF THE WORKERS.

ALL DIMENSIONS ARE IN INCHES (MILLIMETERS) UNLESS OTHERWISE SHOWN.

FILE NAME: #FILE#	USER NAME: #USER#	DESIGNED: -	REVISED: - 04-03	STATE OF ILLINOIS DEPARTMENT OF TRANSPORTATION	TRAFFIC CONTROL DETAILS FOR FREEWAY SHOULDER CLOSURES AND PARTIAL RAMP CLOSURES		F.A. RTE.:	SECTION	COUNTY	TOTAL SHEETS	SHEET NO.	
		DRAWN: - D.W.S.	REVISED: - J.A.F. 12-06		SCALE: NONE	SHEET NO. 1 OF 1 SHEETS	STA.	90/1-90	2010-0556 BP	COOK	12	11
		CHECKED: -	REVISED: - S.P.B. 01-07				TO STA.	TC-17				
		DATE: - 11-96	REVISED: - S.P.B. 12-09					FED. ROAD DIST. NO. 1 (ILLINOIS) FED. AID PROJECT				CONTRACT NO. 60



NOTES:

1. USE BLACK LETTERING ON ORANGE BACKGROUND.
2. ERECT SIGNS IN ADVANCE OF THE LOCATION FOR THE "ROAD CONSTRUCTION AHEAD" SIGN AT LOCATIONS AS DIRECTED BY THE ENGINEER.
3. ERECT SIGN ① WITH INSTALLED PANEL ② ONE WEEK PRIOR TO THE START OF CONSTRUCTION.
4. REMOVE PANEL ② SOON AFTER THE START OF CONSTRUCTION.
5. SEE SPECIAL PROVISION FOR "TEMPORARY INFORMATION SIGNING" FOR ADDITIONAL INFORMATION.
6. ONE SIGN ASSEMBLY EQUALS 25.70 SQ. FT. (2.3 SQ. M.)
7. SHALL BE PAID FOR AS TEMPORARY INFORMATION SIGNING.

ALL DIMENSIONS ARE IN INCHES (MILLIMETERS) UNLESS OTHERWISE SHOWN.

USER NAME * #USER#	DESIGNED -	REVISED - R. MIRS 09-15-97	STATE OF ILLINOIS DEPARTMENT OF TRANSPORTATION	ARTERIAL ROAD INFORMATION SIGN		F.A.I. RTE.	SECTION	COUNTY	TOTAL SHEETS	SHEET NO.	
	DRAWN -	REVISED - R. MIRS 12-11-97		SCALE: NONE	SHEET NO. 1 OF 1 SHEETS	STA.	90/1-90	2010-0556 BP	COOK	12	12
PLOT SCALE * #SCALE#	CHECKED -	REVISED - T. RAEMACHER 02-02-99				TO STA.	TC-22		CONTRACT NO.		
PLOT DATE * #DATE#	DATE -	REVISED - C. JUCIUS 01-31-07					FED. ROAD DIST. PD. 1 (ILLINOIS) FED. AND PROJECT				